

MISSOURI VALLEY COLLEGE



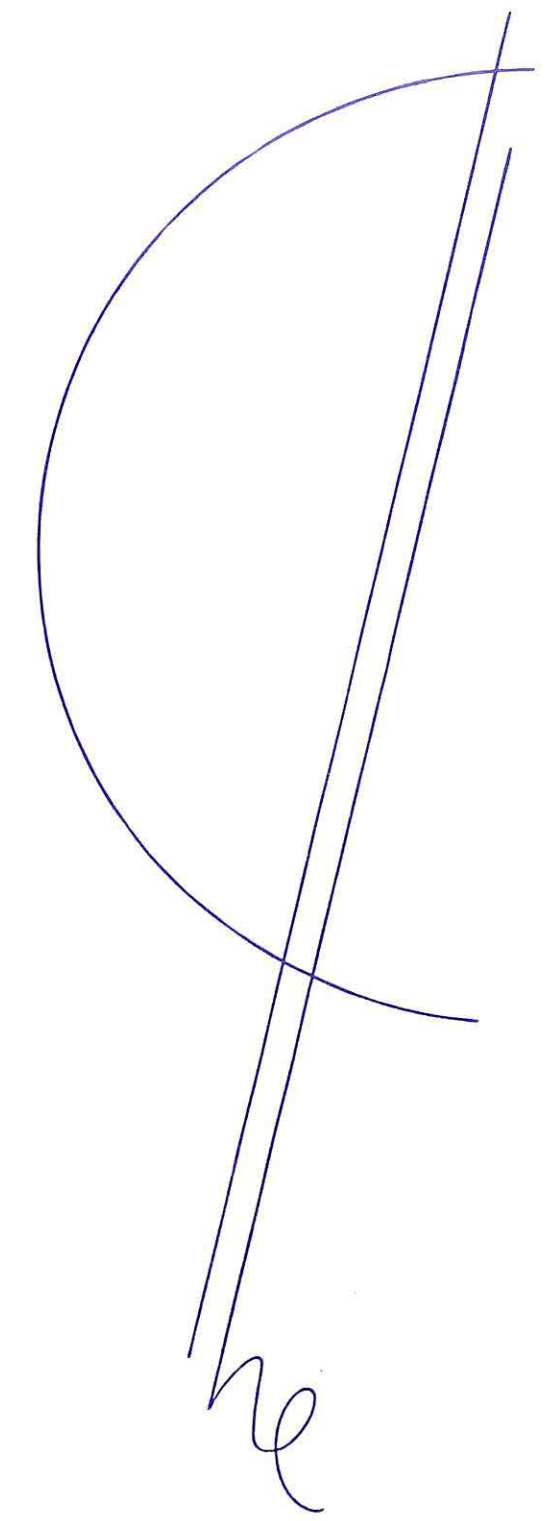
3 7010 00239652 7

Shelton
S
A
B
B
D
U
R
A
1934

MVC
378
Sal
1934

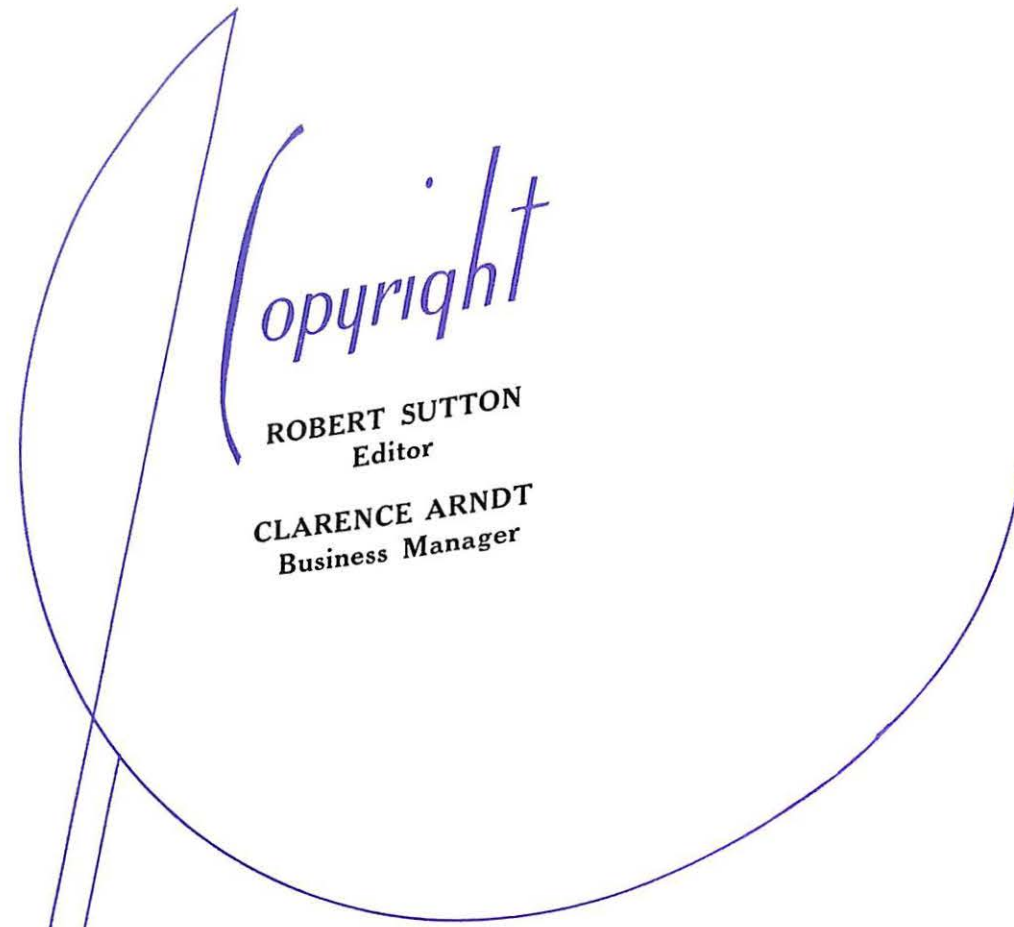


Handwritten note in the top right corner.



SABIDURIA

M C M X X X I V



Copyright

ROBERT SUTTON
Editor

CLARENCE ARNDT
Business Manager

he

S A B I

M

C

M

22599

June 8, 1934.

Staff

File

D U R I A

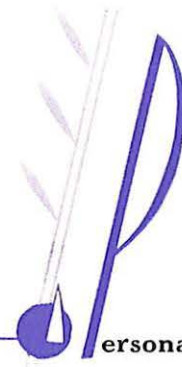
X

X

X

I

V



Personalities and places are the highlights of college life.
To preserve them is the purpose of

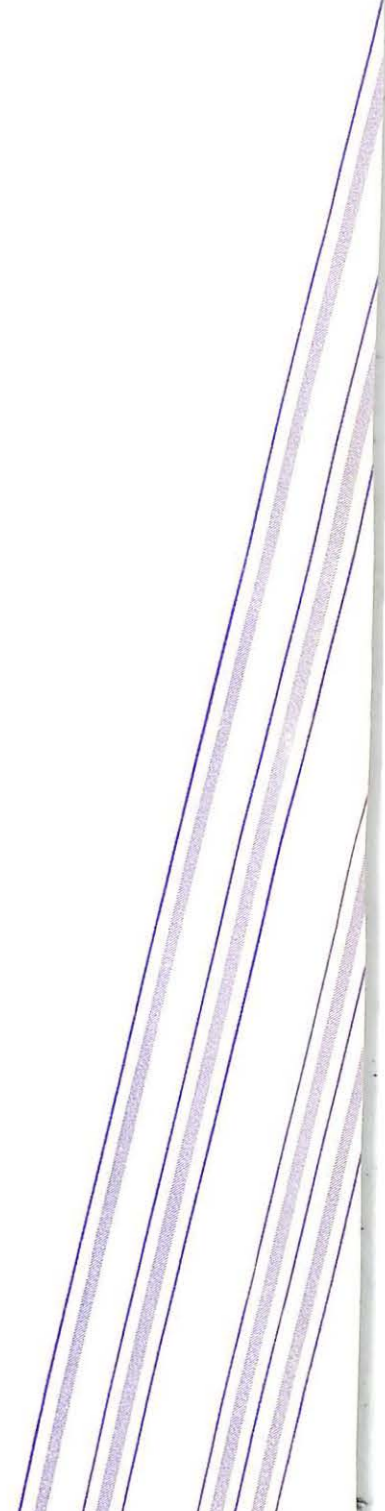


The

DEDICATION

Because she seeks the truth and tries to make it prevail, we respectfully dedicate this, the twenty-eighth Sabiduria, to

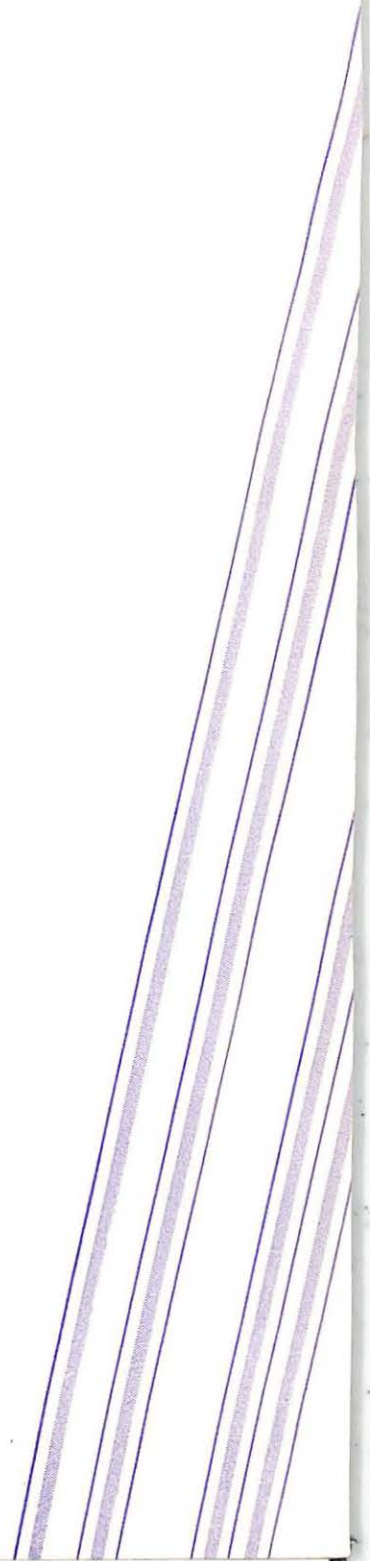
Mrs. Belle Campbell Huff





P
The
PREFACE

The 1934 Sabiduria depicts the campus of the hour, the moment and the year. All efforts have been bent to make its wording, its illustration a symbol of today. Its success is mirrored in you. It is for you that we have made our book. It is to your view that we hold this mirror from which the picture shall never fade.



10/10 10/10



he
CONTENTS

AUTUMN

•
WINTER

•
SPRING



AUTUMN, Winter, Spring! One after the other,
different, yet always the same! The headlong
rush of time fuses the memories of our life so that
they become one great picture of Missouri Valley,
1934.

•



OLD friends are the best. About these buildings our hearts have stored up memories and they have become to us old friends. Their hospitable doors and the tower dominating the campus will live long in our hearts.

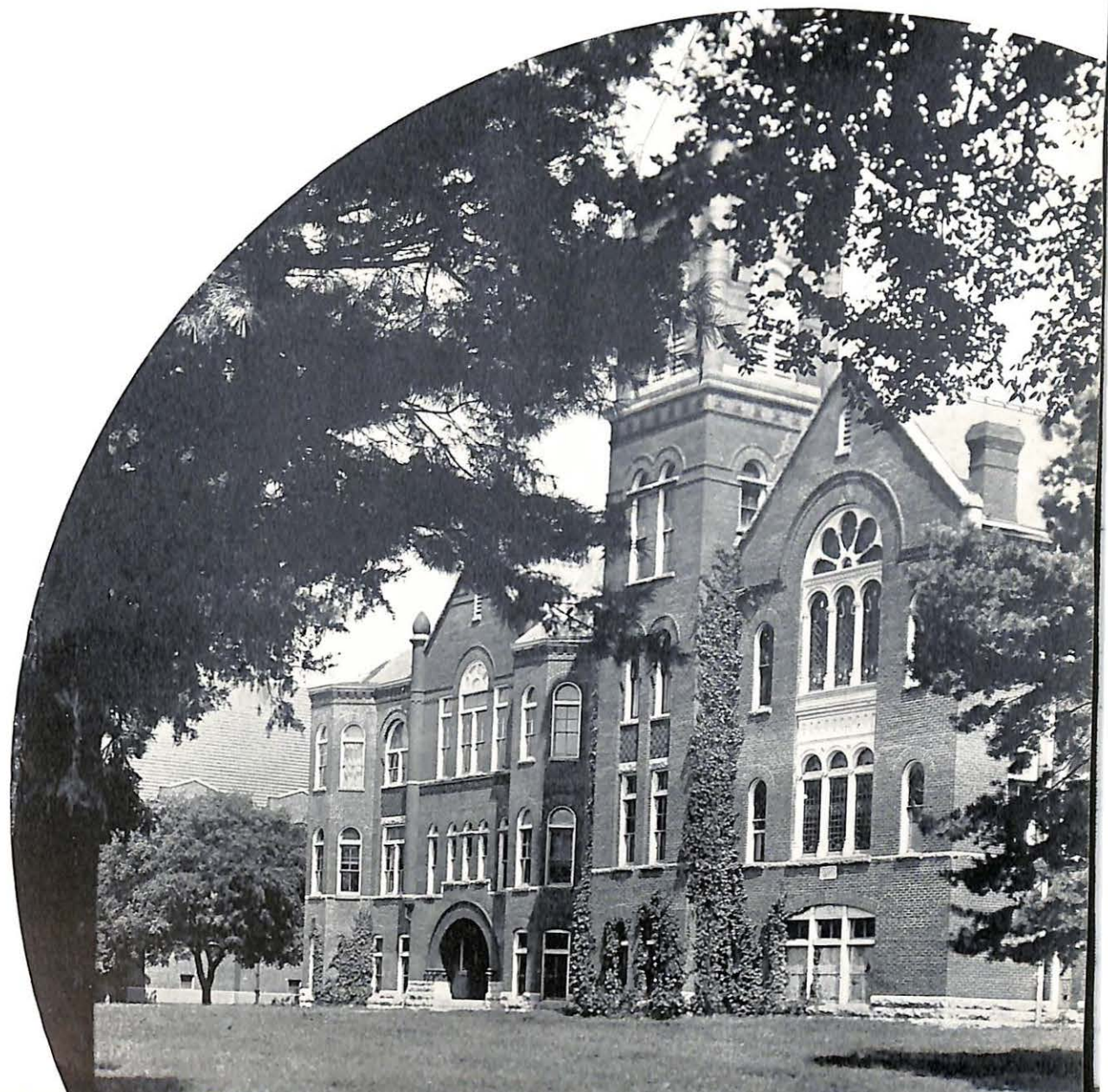


HEAT in summer brings a luxuriant beauty to the campus and languidly we view it at its best.

278.73

M. J. C.

22599





OPEN gates lead to Valley. Their cheery welcome is reflected through the campus. When we leave through them, it is but to return again, glad and welcome. It is but a step to the fountain. As the well was once the center of community life, so is the fountain the center of Kollege Sity.



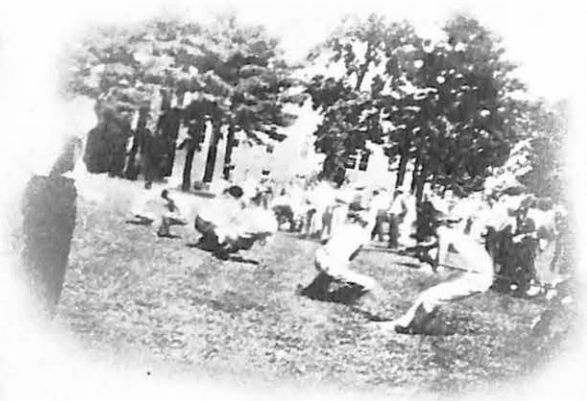
NEW faces and new personalities provide a blending series of changes on the campus. The only permanent things are the buildings. There are the dormitories and the gymnasium, where we live and work and play. There is the Main Building, the center of our interests and activities for four years. There is the Chapel, where we first come as students to Convocation and from which we depart, students no more, but graduates of Missouri Valley College.



AUTUMN comes and with it school again . . . We gather from our summer's work and play . . . We call greetings loudly . . . We welcome, after a fashion, those who come as freshmen . . . We enroll . . . and then change our registrations . . . We judge teachers and students . . . and find we were mistaken . . . We cheer madly for the football team . . . Our pep rises to a peak, which, sadly, it never reaches again . . . We resume Kollege Sity news and gossip where we left them before . . . And so we slip through three months of work and play into Winter . . . Such is . . .

A U T U M N

Name *Sue Freshman*
 Course *English No. 1*



*Then came the autumn, all in yellow clad,
As though he joy'd in his plenteous store,
Laden with fruits that made him laugh, full glad
That he had banished hunger, which to fore
Had by the belly oft him pinched sore,
Upon his head a wealth that was enrol'd
With ears of corne of every sort, he bore,
And in his hand a sickle did he holde,
To reape the ripened fruit the which the earth had gold.*

—SPENSER

MISS DOROTHY REID
Queen of the Harvest



Freshmen



DAVID DEXTER, *President*
Kansas City

MARTHA TRAUGHBER, *Sec.-Treas.*
Norborne

LUCILE MCALLASTER, *Freshman Queen*
King City

KENNETH FREEMAN
Roanoke

FYRN SCRIVNER
Stover

HAYDEN DIGGES
Glasgow

ANNE MURRAY
Kansas City

PHILIP GOODWIN
Alma

BETTY HUSTON
Deepwater

ARTHUR BILY
Chicago

MARY LETTA SEARFOSS
Marshall

THOMAS JAMES
Buckner

ELIZABETH ERWIN
Urich

ROBERT HOUGH
Ashtabula, Ohio

KATE H. ABNEY
Napton

OTHO PENCE
Marshall

BERNICE NORTON
Kansas City

DELL HARLAN
Salisbury

To Missouri Valley College in September, 1933, came a group of boys and girls who were to form the class of 1937. They were very green, as green as the bows of humility which the girls were forced to wear. But they were quite determined to make

Missouri Valley a little better for their having been here, so they pitched in to work. David Dexter was their chosen leader; Pat Kidd was elected vice-president, and Martha Traughber, secretary-treasurer. For the student senate, Jean Christie and Paul Barn-

Freshmen

PAULINE ALLEN
Kansas City

ALLEN RUSSELL
Kansas City

HELEN HAMILTON
Salisbury

RACHEL MCLEOD
Marshall

MARY ELIZABETH EWELL
Marshall

VIRGINIA HARTZELL
Carrollton

JEAN SHARP GUTHRIE
Macon

MAURICE SEVEDGE
Kansas City

HOPE GREEN
King City

WENOMA FOSDICK
Carthage

JEAN CHRISTIE
La Plata

VIRGINIA SAPPINGTON
Marshall

ROWENE HELM
Odessa

H. G. COPSEY
Broken Bow, Nebraska

JANE MILLER
Sedalia

ELOISE TARRANT
Neosho

MARY ELIE BROWN
Slater

CATHERINE LOWER
Marshall



hill were elected; Jean Christie and Bob van der Maaten will represent the class in the senate next year. Behind these able leaders stood the Freshman class eager to help make their class one of the best to graduate from Missouri Valley.

Now as their first year draws to a close the Freshman can look back over a record of which they can be proud and which they plan to surpass next year. To the school activities they contributed; six women eligible for membership in the W. A. A.; six out

Freshmen



ROBERT PLACE
Gallatin
VIRGIL MCDOWELL
Brookfield
PAUL LIBBY
Shelbina
MERLE MCCONNELL
Appleton City

MARSHALL COFFMAN
Marshall

LATEN CARTER
Hollister

JAMES BAKER
Chicago, Ill.

LEWIS JOHNSTON
Mexico

LOWELL JOHNSTON
La Plata

LOUIS HANSEN
Kansas City

RAYMOND S. SULLIVAN
Miami

NOLAND RUSSELL
Kansas City

ROBERT VAN DER MAATEN
Springfield

OSCAR WHITEHOUSE
King City

JACK RICHARDS
Kansas City

THEOPHILUS HERMERDING
Blackburn

ELMER SCHUTTE
Corder

DON THORPE
Armstrong

CARYLL CLINE
Appleton City

of the eight lettermen in basketball; fourteen out of the sixteen prominent in track; nine football letter men; one man on the tennis team; an orator winning fourth place at

Jefferson City; six on the Delta staff; and seven on the Sabiduria staff; and several with prominent roles in the May Fete.

Freshmen

BERNIECE BERRY
Versailles
ELLEN BUCK
Marshall
NARVALEE YATES
Slater
HILMA DOHRMAN
Stover
MARY VANCE
Sedalia
CLAY BELLE HOUSTON
Malta Bend
MARY YEAGER
Marshall
CHARLES BAKER
Napton
RUTH FERGUSON
Roanoke
PAUL BARNHILL
Marshall
KATHLEEN FOSTER
Richland
WILLIAM IRVINE
Marshall
DOROTHY ROBINSON
Marshall
WILLIAM FERGUSON
Roanoke
ELIZABETH EAKER
Slater
JUNE GRIMES
Marshall
MARTHA DONEGHY
Kirksville
CLYDE K. SARGENT
Slater
DOROTHY PARKS
Marshall
JAMES LONG
Malta Bend
LILYAN THURMAN
Marshall



M. V. C. Library

Sophomores



CLARENCE ARNDT, *President*
Marshall

ADELINE KOLLER, *Sec'y-Treas.*
Wever, Iowa

NELL BOATRIGHT, *Vice-President*
Slater

JOSIE MAE PENCE
Marshall

DOROTHY FRITTS
Independence

ROBERT WILSON
Marshall

MARTIN DYE
Carrollton

EDITH JETER
Slater

On September 12, 1932, another expedition started a four-mile hike from Freshburg to Senior City. There were eighty-four of us who came from far and near to Missouri Valley to start the journey. With kind words of advice and encouragement from the

faculty and upper classmen, with a jeer thrown in now and then for spice, we gathered up will and determination to set out. The way was rough and stony at first, but, after we had had time to get organized, the road became less difficult. As leaders

Sophomores



ELSIE RENKEN
Cole Camp

DALE VANDIVER
Marshall

JAMES WOODSMALL,
Memphis

ELIZABETH BOWLIN
Norborne

ALMA JONES
Independence

JUSTIN MCKELVEY
Kansas City

PAULINE MALLMAN
Napton

VIRGINIA YOUNG
Utica

we chose William Petry for President, Dale Vandiver for Vice-President, and Jane Cline served as our Secretary-Treasurer. They led us into Sophton where we made our first stop.

In the first mile there had been some who

had fallen by the wayside and some had turned back until there were only thirty-five of us to continue the journey, although thirteen had come from the neighboring countryside to join us at Sophton, so there were forty-eight to set out for the next town, Junville.

Sophomores



MARY FRANCES ROBERTS
Kansas City

KITTY SUE THOMPSON
Marshall

LOUELLA GRAY
Marshall

MARY JANE FRAIN
Marshall

BUTLER THOMAS
Corder

LOUISE GRINSTEAD
Houstonia

HARRIET JONES, *Sophomore Queen*
Carthage

JACK CRITCHFIELD
Creston, Iowa

At the beginning of this second mile, we chose new leaders. They are Clarence Arndt, President; Nell Boatright, Vice-President; and Adeline Koller, Secretary-Treasurer.

At present we are nearing Junville and are looking forward to it anxiously. We have completed half of our journey which

has been very successful for we have had representatives in almost every field of activity. In 1936, we expect to reach the metropolis, Senior City, from which we shall scatter over all the hills and through the valleys to urge others to take the four-mile hike through our Missouri Valley and reap the benefits that we have experienced.

Sophomores



MARIAN KIRKPATRICK
Memphis

VIVIAN VALKENBURG
Sedalia

VIRGINIA THWEATT
Marshall

EDNA HOLSTEEN
West Point, Iowa

SPENCER GLENN
Brookfield

BEULAH MAE PRICE
Marshall

FRANK ROBERTSON
Yates

WILLIAM SAPPINGTON
Slater

ALVA HUFF
Augusta, Illinois

RANDALL JESSEE
Excelsior Springs



SINCE assuming his duties as President of Missouri Valley College in September of 1927, Doctor George H. Mack has been the forceful leader of a continuous upward drive on the part of the College. His personal interest in the growth and development of all activities on the campus has been a constant inspiration. His executive ability has been most marked in his development of an excellent faculty and his wise counsel and forethought in financial matters. The continued advance of Missouri Valley will be dependent upon adherence to the principles held by President Mack, deliberation and zealous action.

Dr. George H. Mack, D. D.

Clarence Lee Miller, Ph. D.

THE rapid rise of Missouri Valley College to a position of leadership in the application of new methods in higher education is centered in the activity of the Dean of the College, Doctor Clarence L. Miller. Soon after his arrival on the campus in 1930, Dr. Miller inaugurated the first of many changes in educational objectives and methods. These have included the adoption of the three-year plan, under which the first students are being graduated this year; the offering of synthesizing courses in the cultural fields, which are soon to be made compulsory; and the use of comprehensive examinations, which are yet in the experimental stage.

Yet Dr. Miller's interests have not been limited to these. He has had a great influence upon student affairs through the social organizations and as the recognized arbiter and authority in student government.



Faculty



HELEN B. MAY, B. A., M. A.
History, Dean of Women

IN four years Miss May, as director of the social program in her duties as Dean of Women, has developed the social life of the campus until its carefully regulated precision offers full opportunity for the best social advantage of all. As adviser for the young women of the campus, Miss May has been quite successful.



CLAUDE L. FICHTHORN
B. A., M. A.
*Dean of the School of Music
Voice, Piano, Organ*



WILLIAM R. MITCHELL
B. A., Ph. M., Ph. D.
Registrar, Education, Psychology

Faculty



MADELINE ASHTON
B. A., M. A., Ph. D.
Modern Languages



EARL PETTIJOHN
B. A., B. S., M. S., Ph. D.
Chemistry, Physics



PERCY L. JOHNSON
B. S., M. S., Ph. D.
Biology



WILLIAM W. MALCOM
B. A., B. D., Ph. D.
Biblical Literature, Philosophy

Faculty



CARLE B. SPOTTS
B. A., M. A., Ph. D.
English, Argument



FORREST WESTERN
B. A., M. A., Ph. D.
Physics



WILLIAM I. FERGUSON
B. A., M. A.
Mathematics, Astronomy



BELLE CAMPBELL HUFF
B. A., Litt. D.
Literature, History

Faculty

M. Y. C. Library



ISAAC N. EVRARD
B. A., M. A., Litt. D.
English, Literature



RICHARD O. HALE
B. A., M. A.
Classical Languages



HARRY J. JORDAN
B. A., M. B. A.
Economics, Business Administration



HENRI R. GODFRIAUX
B. A., M. A.
Physical Education, Hygiene

Faculty



CLARABEL BANTA
B. E., B. A.
Expression, Dramatic Art



EMMETT L. PARSONS
Ph. B.
Executive Secretary



ARTHUR T. VAWTER
Mus. B.
Instrumental Music



MARJORIE ROBERTSON
B. A.
Physical Education, Hygiene

Faculty



WYLIE F. STEEN
B. A., B. D.
Alumni and Field Secretary



MINNIE KOPF
B. A., M. A.
Home Economics

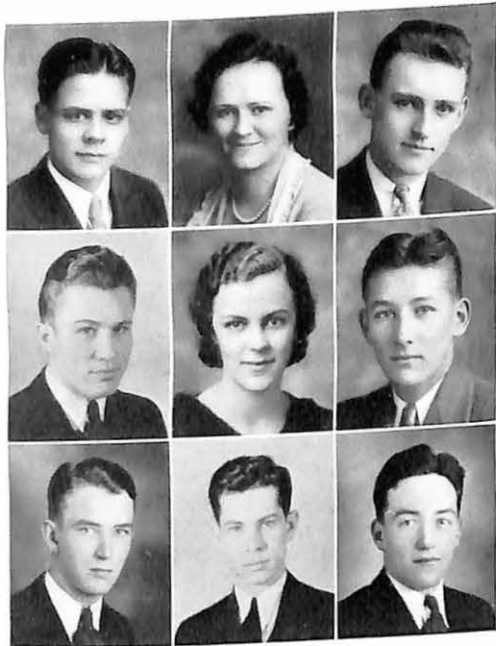


STELLA B. HICKS
M. Litt.
Librarian



MARY K. YOST
Secretary to the President

Student Government



Top row—William Petry, Anne Bell, John Billings.

Second row—Harold Brown, Jean Christie, Ralph Duggins.

Bottom row—John Condon, Hamner Edmonds, Clarence Arndt.

STUDENT SENATE

The personnel of the Senate in the fall of 1933 was as follows:

SENIORS:

ANNE BELL
JOHN BILLINGS
JOHN CONDON

JUNIORS:

RALPH DUGGINS
EDGAR LAUTHER
HAMNER EDMONDS

SOPHOMORES:

CLARENCE ARNDT
WILLIAM PETRY

FRESHMEN:

JEAN CHRISTIE
PAUL BARNHILL

PETER H. REA has served as President of the Student Body in a most commendable manner.

Mr. Billings has served as vice-president, Mr. Lauther as treasurer, and Mr. Edmonds as secretary. Harold Brown was elected to serve the second semester as a senator from the Junior Class, when Mr. Lauther did not re-enroll, and Mr. Condon became treasurer of the student body.

The senate carried on this year under a reduced budget and financed the customary Homecoming and Kollege City Dances, the Football Banquet and the crowning of the May Queen. Due to careful spending, there were sufficient funds left in the treasury in April to vote an allotment to the Sabiduria to help it in its financial difficulties.

As the central authority in student government, the Senate has capable coordinated and directed student publications and student affairs in general. Good feeling and a spirit of cooperation have been the marked characteristics of the student body under the administration of the present Senate.



Publications

THE DELTA

The Delta is the sister publication of the Sabiduria, in that it is the official student newspaper, published under the authority of the Student Senate.

This year it has been seriously handicapped by insufficient funds. A slight increase in the assessment on students could not offset the great decrease in advertising income. Hence it was impossible to produce an issue, as was done formerly, every two weeks. The issues were worth waiting for and provided the same amusement and record of activities as in the past.

A regular class in journalism, under the instruction of Dr. C. B. Spotts, was the center of productive activity and instruction. One hour of credit in English was granted each semester.

At the close of the year, the more active students were rewarded with a trip to the meeting of the Missouri College Newspaper Association held at Columbia, May 11 and 12.



Top row—Randall Hains, Elizabeth Winn, William Galloway.

Second row—Rachel McLeod, David Dexter, Alma Hudson.

Third row—James Baker, Helen Hamilton, Lewis Johnston.

Bottom row—Charles Sparks, business manager; Overly Myers; Randall Jessec, editor, 1935.

The Delta was fortunate in having an industrious and capable business manager in Charles Sparks. He was ably assisted in his sales of advertising by Overly Myers, who has been elected business manager for 1935.

BETH BLACHLY. Much of the success of the Delta must be attributed to the ability and tireless determination of Miss Blachly, the editor. Her devotion to the Delta and its betterment has set an example of leadership in student publications.

Football



FOOTBALL 1933

Another football championship in the Missouri College Athletic Union was the result of Missouri Valley's 1933 campaign. Gaining impetus with each successive game, the Vikings, after dropping the first two non-conference games by depressing scores, crushed the Kemper Cadets and then, following a tie with Jewell and an upset win over Baker, decisively trounced Tarkio and Central to earn the football title.

A bright outlook by no means presented itself at the start of the season—nor did it after the two opening games.



Coach Godfriaux, returning after a year's absence, faced a huge task in rebuilding the championship team of the year before.

Missing from the preceding year's aggregation were five all-conference stars and a number of other veterans. Captain "Crabby" Taylor led the list of returning lettermen which included Orville McCollum, Harold Brown, James Runkle, George Yates and Ray McDaniels. McDaniels, because of conference ineligibility and an injury, was unable to see service.

The remainder of the Viking squad was made up mostly of freshmen, who shared responsibility for the success of the team. Using his veterans, Coach Godfriaux was able to build his championship team by adding the services of a large group of these freshmen.

Valley's gridsters improved steadily until they became the speedy, deceptive football machine that so handily trimmed Tarkio's hitherto undefeated, untied football team, and then on Thanksgiving day, defeated Central's Eagles for the championship.

COACH HENRI R. GODFRIAUX, to whom must go the credit for the success of this season.

Football



Front row—Ridgeway, Rea, McCollum, Runkle, Taylor, Captain, Yates, Brown, Duggins, James.
 Second row—R. Freeman, Scott, Abney, Carr, Long, Douglas, Robertson, Glenn, McDowell, Nuckles, Coach Godfriaux.
 Third row—Libby, Holloway, Purpus, Richards, Leech, Dexter, Place, Sebastian, Barnhill, K. Freeman, Schutte.

Six Viking men earned positions on the 1933 M. C. A. U. mythical all-star elevens. On the first team were Taylor, halfback and captain of the team; McCollum, end; Runkle, guard, and Long, tackle; and only freshman selected for the first team in many years. Two Valley men were second team choices: Holloway at center and Leech at fullback. Honorable mention was given to Carr, tackle, and Scott, end.

The Vikings of next season will be led by the new co-captains, Harold Brown and Orville McCollum.

VALLEY 0—WARRENSBURG 32

Valley's team played raggedly and could not stem the smashing line plays led by Brown and Casper. Taylor, Rea and Leech led the Viking offense which seldom was able to puncture the Teachers' line.

CAPTAIN OWEN TAYLOR—"Crabby's" excellent leadership as captain, his lightning-thrusts on the offense and dogged determination on the defense were more than sufficient grounds for the honor he was accorded: Captain of the M. C. A. U. All-Stars, 1933.

VALLEY 7—ROCKHURST 40

Valley could not match the scoring power of the speedy Rockhurst backs. Sebastian and Taylor were the spark-plugs of the Viking offense, while Libby, Leech and Long showed up well at times on the defense.

VALLEY 25—KEMPER 0

The Viking attack really blossomed as the fleet Valley backs, led by Taylor, Leech and Libby, ran away with the game. The victory over the Cadets brought great satisfaction to the Valley

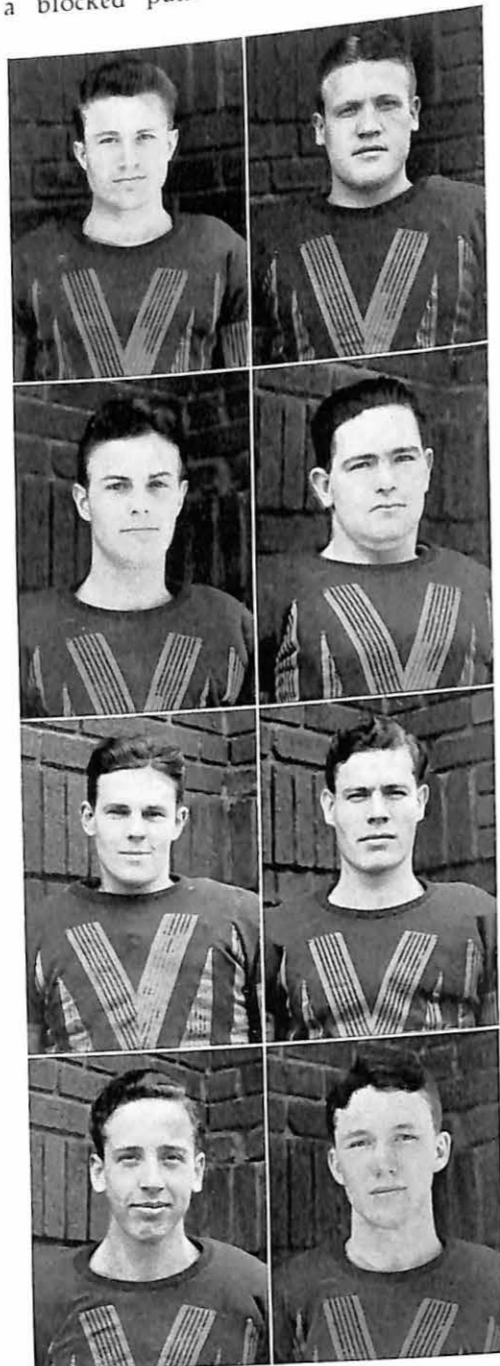


Football

followers. The Vikings had gained their stride.

VALLEY 7—JEWELL 7 (Conference Game)

After having led the Cardinals almost all the way, due to Red Leech's return of a punt seventy yards for a touchdown. Valley was tied in the closing minutes of play when Jewell recovered a blocked punt. It was a defensive



Page Forty

game, with Long, Carr, Rea and McCollum starring on the Viking defense.

VALLEY 13—BAKER 6

The Vikings scored a real upset in this game. Baker was leading 6 to 0, when Taplor made one of his fine runs to tie the score. Then the combination of Leech's quick-kick and Long's blocking a punt behind the goal-line scored to win the game.

BROWN, HAROLD

Defensive strength and ball-carrying ability were this half-back's contributions to the Viking team. He will doubtlessly prove valuable in 1934 as co-captain.

RUNKLE, JAMES

Playing his last year, this powerful guard excelled in his position offensively and defensively.

MCCOLLUM, ORVILLE

His speed and all-around ability distinguished him as an end. He is to be co-captain of the 1934 squad.

YATES, GEORGE

A stalwart guard who really earned his spurs with his defensive play and power on attack.

REA, PETE

His first year on the squad showed him to be a fine end with great determination.

PLACE, ROBERT

Bob's play at center and guard was characterized by hard tackling and good defensive work.

CARR, JAMES

This large, powerful Freshman improved with each game, and at tackle was largely responsible for Valley's strength of defense.

LONG, JAMES

"Jimmie," a freshman, was a power on offense and especially adept in smearing the opponent's plays.

Football

VALLEY 19—CENTRAL 6

(Conference Game)

Forced to the limit, the Vikings excelled all their preceding performances in beating their green-clad rivals. It was the Valley running attack, coupled with great goal line defense, which withheld two strong Eagle thrusts, that won the game and the championship.

VALLEY 19—TARKIO 0

(Conference Game)

With deceptive plays and passing combinations working to perfection, Coach Godfriaux's gridsters scored all their touchdowns in the first half to put Tarkio hopelessly out of the running. This victory came as a surprise and made Valley a favorite over Central for the Thanksgiving game.

GLENN, SPENCER

His fine play as a guard was one of the main reasons for the strength of the Viking line.

HOLLOWAY, GILBERT

Gibby's play at center was highly dependable, on the offense and defense alike.

DUGGINS, RALPH

His play at end was truly commendable, both defensively and offensively.

ROBERTSON, FRANK

In earning his first letter, Frank added much strength to the squad with his dependable playing at tackle.

LEECH, HOMER

"Red" was a great groundgainer as full-back, and his speed and power on the defense made him invaluable.

ABNEY, SHELTON

Playing football for the first time, he showed up exceptionally well as an end.

LIBBY, PAUL

This speedy little freshman's fast all-around talent indicates he will continue to be a big aid next season.

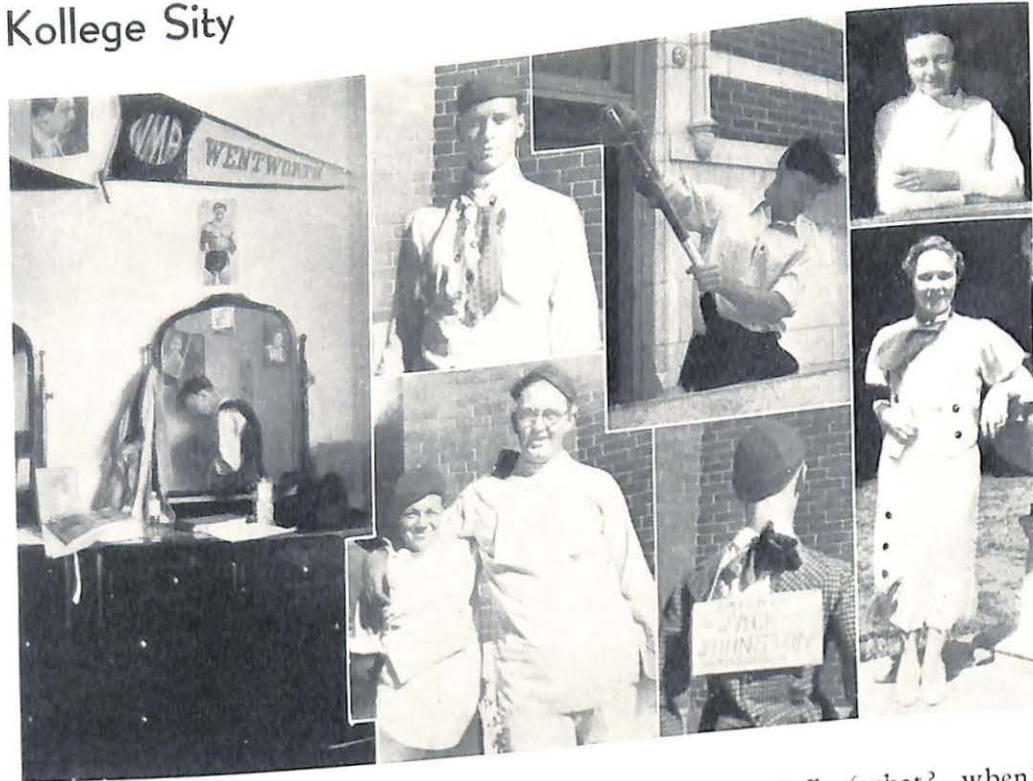
SEBASTIAN, GENE

His cleverness, speed and smoothness as quarterback made him one of the spark-plugs of the backfield.



Page Forty-one

Kollege Sity



DICTIONARY

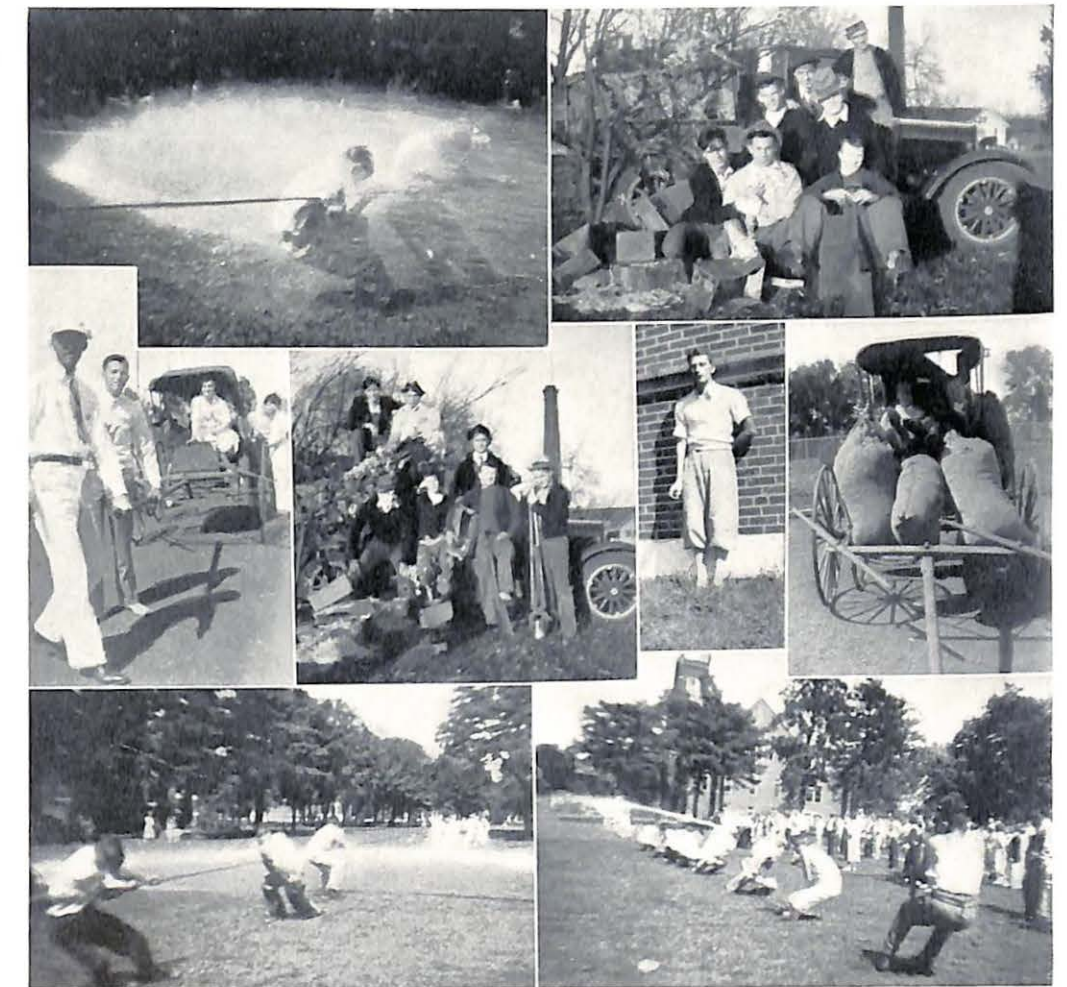
Alluring (most luring)—see Valkenburg.
 Ambition—see sailors Russell.
 Bashful—see Ridgeway.
 Brainy—see Allen.
 Conceited—any Sigma Mu.
 Contagious—Marjorie Malcolm. (Oh yeah?)
 Class—sleep period; synonym for Hades (If Mrs. Huff's class.)
 Cosmopolitan—Mr. Jordan. (Enough to get around every place.)
 Dangerous—Redpath's lion (I-i-n-e, if inclined to be gullible.)
 Darling—Mary Frances Roberts ??
 Dainty—see Jimmie Runkle.
 Defeat—French (Helen Hamilton's 1934 version.)
 Egotistical—see Campbell (so soothing to those jagged nerves? ?)
 Entertaining—see Almie and Virgin at the door which isn't at Birkhead.

Ferocious—Mrs. Huff (what? when? where?—anything, anytime, anyplace.)
 Football—see Slats Galloway.
 Funny—Miss May (Just imagine.)
 Good—Term obsolete here (vas you dere, religious atmosphere?)
 Graceful—it's got us stumped.
 Goofy—Mr. Hale (You little flirt—ducky wucky.)
 Honey—Mrs. Western (Liberal-arts education strengthened by public handholding.)
 Hard-to-get—A show-date on any night but Tuesday or Thursday.
 In love—Roxie and Martin (They say love has its ups-and-downs, but Martin is about convinced it's all down.)
 Idiot—see Beta Gamma Phi.
 Languid—see M. V. C. pep squad.
 Loud—see Rowene Helm.
 Lie—never heard of it. (De religious atmosphere vas dere.)
 Laugh—see Jack Johnston (that lingering remembrance you'd love to forget.)

Kollege Sity

Manly—see Buddy Purpus (Reference: Edition No. II.)
 Male—something to flirt with; see "alluring" above.
 Many—the stags and wallflowers at Wreck Hour.
 Naughty—Bill Eaker. (The half has never been told.)
 Nice—not in my repertoire.
 "No"—Girls' answer to Miss May's "Do you smoke?"
 Occupation—anything except sleep.
 Obnoxious—The question of proper dancing form.
 Private—Hal Bell's profit Pills—see teachers.
 Rain—Valkyr Formal.
 Ritzy—Shelton Abney.
 Rambunctious—our dean.
 Smart—see flunking list.
 Smart Alec—see A. D. K.'s.
 Sarcasm—Western (he hasn't learned how to veil it.)
 Silence—foreign word of unknown origin (except to Mrs. Huff's front board—final reference to that august cosmopolitan.)
 Sweet—milk at Young Hall by accident.
 Tattletale—see House Presidents.
 Trip-Trip—see Gore.
 Trying—a parlor date.

M. V. C. Library



Kollege Sity



Unusual—shirt collars without lipstick at Sunday breakfast.
 Unique—whipped air dessert.

Vanity—see Ball-loo.
 Varsity—a term heard only in "pitcher" shows.

What?—an expression used by students.
 Why?—theme song of a W. S. G. A. member.

Xquisite—student chapels.
 Xcuse—synonym for Dean Miller's slip (see lie.)

Yelling—Alma Jones comin' up the fire-escape.

Zoo—see anyplace at M. V. C.

NEWSY BITS

Editor's Note: Everyone please bear in mind as they read this that it's not me—it's the house council!

It took a little daisy from old Nesho to teach us the ancient art of Hansbroing. (Don't look around now, but I believe you're being followed.)

As in the days of yore, still our modern Nero fiddles while Rome burns. (Hey, Ham! Where's Ethridge this week-end? Did he have to go see Pa-pa?)

The college poetess wishes to show her supreme admiration for Senor Ralph Duggins by dedicating to him the following choice morsel:
 "A woodpecker lit on old Ralph's head,
 And there began to drill;
 He bored away for half-a-day
 Then he broke his bill."

Mary Vance: It is no longer necessary to make above forty on the purity tests for they are not recorded on the transcripts henceforth."

Jean Guthrie (Redhead): "I hate Louis Hansen."

Charlotte Howe (the roommate): "Why, what'd he do?"

Red: "He said I couldn't whistle. Just to show him I puckered up my mouth just as round and sweet, and what do you suppose he did?"

Choddy (blushing): "How should I know?"

Red: "Well, the darn fool just let me whistle."

Kollege Sity

Wesley's the kind of a fellow who spends the rest of the evening repairing the fuse when the lights in his girl's room go out.

Bill Sappington: "What shall we do tonight?"

Martin Dye: "I'll spin a coin. If it's heads we'll go to the dance; if it's tails we'll go to the show and if it stands on edge we'll study."



Kollege Sity

W. S. G. A.

If you wish to qualify for W. S. G. A.
 Forget there was such a word as play;
 In fact, take them as an example rare
 Of some who can really lay facts bare:
 You can't favor your friends, you know,
 If you want to make W. S. G. A. a go.
 So here's to your health and ability to sneak
 When it's really not necessary that you take a peek!

?????

I think that I shall never see
 Anyone that's really good to me;
 Anyone that may on any day
 Want to see me run and play:
 One who's good and hard to beat,
 Who thinks I'm nice and really sweet;
 One who looks to me all day,
 And never forgets some good to say,
 Poems are made by fools like me,
 But I can't make you perfect be!

WRECK OUR

(Dedicated to the Young Hall Stags)

If the gayest of times you wish to see,
 A Saturday Wreck Our is calling thee;
 Along one side you'll see a line
 Of lads of almost every kind.
 Are they modest, bashful, or could it be
 That they don't want to dance with you and me?
 Be that as it may, the lads of the Hall
 Let the girls line up 'long the other wall;
 Oh, for a time when we can be
 The one to ask him to dance with me.

Sincerely,

"WALLFLOWERS"

The latest news flash from the Iola Democrat is: "Did you give Alma that copy of 'What Every Girl Should Know?'" asked Father Hudson.

"Yes," replied Mother Hudson, despondently, "and she's writing a letter to the author suggesting that he make portions of it clearer."

Tommy James: "Did you get your hair cut?"

Whitie: "No, I just washed it and it shrank."

Gooch still most emphatically maintains that "she'd walk a mile for a Campbell."

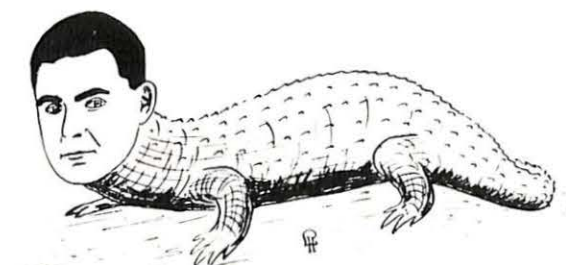
Kollege Sity

"We drink a toast to Miss Trip-Trip Gore,
 Who reminds us of the days of yore—
 When bustles were in wild array
 And men had to keep a yard away."

Beer will be served at the regular Tuesday chapel when Missouri Valley gets the swimming pool (according to Mr. Steen.)



"Nap" Himself



Yes, it's Whitehouse!



JUST HAM



APOLLO DELVEDERE
 Pardon us - McCollum
 with apologies to
 dear old Apollo



REDBLOOD



This must be Yates

WINTRY winds blow . . . Snow comes . . . The Campus,
 swathed in white, has a new beauty . . . Life is no
 longer out-of-doors . . . The scene changes . . . We are driv-
 en indoors . . . We study more sincerely . . . The day of
 reckoning approaches . . . In the fever heat before Christ-
 mas, we find time for organizations . . . There are many
 clamoring for our efforts . . . Social . . . Honorary . . . Reli-
 gious . . . But there are examinations . . . and blue slips!
 . . . Then there are basketball . . . and dramatics . . . and
 forensics . . . and music . . . And in the whirlwind of play
 and study, Winter slips from our grasp and Spring comes
 . . . Such is . . .

W I N T E R

A collage of winter-themed photographs. At the top left, a snowy path leads through trees. To the right, a large evergreen tree is covered in snow. In the center, a basketball team poses in front of a stone archway. To the right of that, a student in a dark tank top is shown in a dynamic pose. Below the basketball team, a group of students is gathered around a table. At the bottom left, a student stands next to a snowman.

MISSOURI VALLEY COLLEGE
 Report to Student

Name Semester 19.....

Courses	Sem. Hrs.	Grade	Honor Points	Remarks
				A - Most Excellent
				B - Very Good
				C - Average
				D - Passing
				E - Cond. Failure
				F - Failure

Honorary



Top row—Frank Rearick, *president*, 1933; Robert Sutton, *president*, 1934; John Billings, 1934.
Lower row—Margaret Mitchell, 1934; Roxie Brown, 1934; Lavinia Lower, 1933; Betty Pettijohn, 1934.

BETA GAMMA PHI

Beta Gamma Phi is the local honorary senior scholastic fraternity. The basis for membership is an average of 2.3 honor points per semester hour of credit. Election is by the faculty at the end of the first semester of the senior year. Students must have been enrolled at Missouri Valley for two years to be eligible to membership.

The purpose of Beta Gamma Phi is to encourage scholarship and to reward those who have complied with its aims. In keeping with this purpose, it is planned to inaugurate a scholastic rivalry among the other organizations of the campus and to reward the winning groups with a fitting trophy.

It is hoped that eventually the fraternal bond between active members and alumni members will lead, as is true of scholastic groups on other campuses, to the establishment of an annual banquet during Commencement week.

The organization was established in January, 1933, with the election of five members from the class of 1933. These five were Frank Rearick and Misses Jean Perry, Lavinia Lower, Mary Catherine Ryan and Josephine Evans. Mr. Rearick was elected first president of the fraternity.

Members from the class of 1934 were elected in February of this year. Robert Sutton, John Billings and Misses Betty Pettijohn, Margaret Mitchell and Roxie Brown were honored this year. In the parliamentary organization of the group, Mr. Sutton was elected president, Mr. Billings, vice-president, and Miss Brown, secretary and treasurer.

Professor Richard O. Hale, Phi Beta Kappa of the University of Chicago, has been the faculty sponsor of Beta Gamma Phi during the two years of its existence.

Beta Gamma Phi has justifiable pride in the fact that although its members are selected on the basis of scholarship, it is nevertheless represented in many fields of extracurricular activity.

Forensics

THE FORUM

The Forum had a highly successful year. It began with the winning of fourth place in the Missouri Intercollegiate Peace Oratorical Contest by Miss Helen Hamilton. On December 9, John Billings and Robert Sutton won four debates in rapid succession at the Southwestern College invitational tournament and lost in the semifinals to the team that subsequently won the tournament.

On February 16 and 17, Elizabeth Winn and Roxie Brown won five successive debates in the Missouri state tournament, held at Missouri Valley, and lost in the finals to an exceptionally strong team from William Jewell College.

A trip into upper Missouri and

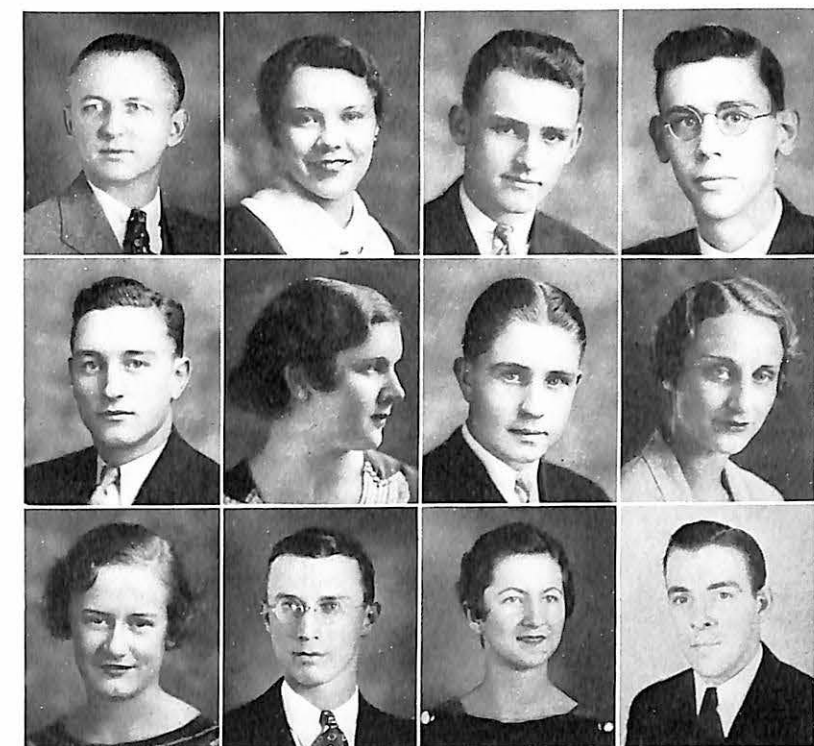
Iowa and participation as a petitioning college in the preliminary rounds of the Pi Kappa Delta national tournament were other high points of the year. In the latter instance, a team composed of Billings and Sutton won three of the five debates held. The climax of the season came at this tournament when the Forum was granted a charter in Pi Kappa Delta.

Sixteen members of the Forum participated in a total of fifty-four debates, of which eighteen were victories, sixteen losses and eighteen without decisions.

Top row—C. B. Spotts, *adviser*; Roxie Brown; John Billings, Robert Sutton, *president*.

Second row—Kenneth Freeman, Mary Vance, William Ferguson, Elizabeth Winn.

Third row—Jean Guthrie, J. Roger Buck, Helen Hamilton, Robert Johnson.



Dramatics



DRAMATIC ARTS CLUB

The Dramatic Arts Club consists of students who have participated in one or more major plays. Under the leadership of its faculty director, it sponsors regular dramatic productions. It is the privilege of the entire student body to try out for the major plays and thus earn membership in the Club.

The officers of the Club this year have been Robert Sutton, president; Elizabeth Reading, program chair-



man; and J. Roger Buck, secretary and treasurer.

The fall production was a three-act play, "You and I," by Philip Barry. The cast was limited and intensive practice produced as completely "finished" a performance as has been witnessed on the campus.

This fine standard was equalled in the production during the winter of three one-act plays from the works of Sir James M. Barrie. These were "Rosalind", "The Old Lady Shows Her Medals," and "The New Word," and the climax of the season was the May Fete play, "A Midsummer Night's Dream", presented in continuation of the custom of a Shakespearean production at this time.

MISS CLARABEL BANTA has been the untiring director of dramatics and sponsor of the Dramatic Arts Club for the past four years. Her knowledge of stagecraft and her perseverance have been the chief factors in the dramatic successes of this period.

Honorary



Front row—Robert Johnson, Roxie Brown, John Condon, Margaret Mitchell, president; J. Roger Buck, Dorothy Holsteen, R. O. Hale.
Second row—Doris Pemberton, Carson Dowell, John Irvine, C. L. Miller, Robert Sutton, Anne Bell.
Third row—Josephine Moore, Elizabeth Reading, Frances Gore, Buena Jackson, Martha Emmerson, Corinne Jackson.

PI GAMMA MU

The Missouri Zeta chapter of Pi Gamma Mu was established at Missouri Valley College in April, 1931. The chapter has grown until it now has sixty-six members enrolled from the alumni, faculty and members of the junior and senior classes who have met its standards of high scholastic achievement in the field of social science.

Pi Gamma Mu was first organized in 1924 at Southwestern College, Winfield, Kansas, by Dr. Leroy Allen, then Dean of that institution. The organization now has over one hundred and twenty-five chapters in many of the leading educational institutions of the nation.

The primary purpose of Pi Gamma Mu is the promotion of a scien-

tific attitude toward social problems on the part of both graduate and undergraduate students. Contemporary social, economic and political topics receive attention at each regular monthly meeting.

The interests of the local chapter of Pi Gamma Mu are not restricted to the field of social science alone, as is attested by the social program of the fraternity, culminating in an annual banquet held shortly before Commencement. The broad intellectual interests of the members is shown by their record of scholastic achievement in all fields, for Pi Gamma Mu is consistently the leader in scholastic ratings.

The officers of the Missouri Zeta chapter are: president, Margaret Mitchell; vice-president, J. Roger Buck; secretary-treasurer, Clarence L. Miller.

Music



THE ORCHESTRA

The orchestra, under the leadership of its new director, Mr. Louis Hansen, has developed remarkably. Appearing in conjunction with the fall production of the Dramatic Arts Club, it early established itself as worthy of the compliments it received. Subsequent chapel programs were well received by the student body.

The climax of the year's success was the appearance of the orchestra at the May Fete. The excellence of technique displayed merited the praise it gained.

The band has been a real help in promoting pep at games. Unfortunately many of the members were either on the teams or the Pep Squad, but the remainder did their level best to cheer the team on. Aided by Marshall citizens who were willing and loyal in their support, the band always did its part.

Brilliantly colored capes and caps furnished by the student body give the band an impressive appearance. Under the direction of Mr. Louis Hansen, the band should develop rapidly into a true leader among the activities of the campus.

THE BAND



Religious



THE Y. W. C. A.

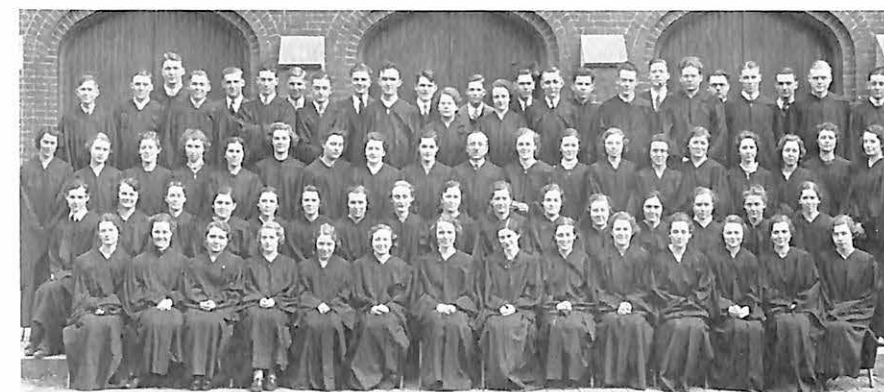
This year the keynote of the program of the Young Women's Christian Association has been variety appealing to all girls on the campus, but there has been no submergence of the true purpose of the association. The regular weekly meetings have been highly inspirational and cooperation with the Y. M. C. A. in sponsoring the Sunday vespers resulted in mutual benefit.

The cabinet as pictured above: front row, Elizabeth Bowlin, Frances Cline, Marjorie Malcolm, *president*, Adeline Koller; back row, Berniece Berry, Miss Clarabel Banta, *sponsor*, Elizabeth Winn.

The Vesper Choir can truly be said to be a distinct contribution of the College to the cultural and religious life of Marshall. Its monthly concerts have been well attended and have been thoroughly appreciated by all who heard them. The high points of the season were the concert on Palm Sunday at the Methodist Church, given before the union service of the churches of Marshall, and the presentation during Commencement Week of Handel's "The Messiah".

The cooperation of the group has been remarkable but its success is due to the unflagging energy of Dean Claude L. Fichthorn.

THE VESPER CHOIR



Religious



Front row—John Billings, Raymond Campbell, president, Robert Johnson, Overly Myers.
Back row—Merle McConnell, William Galloway, Nolan Russell.

THE MINSTREL

The Young Men's Christian Association has endeavored this year to fulfill its purpose on the campus of Missouri Valley College: that of giving the principles of religion a practical application to student life, through the encouragement and practice of Christian devotion and leadership.

Regular weekly meetings were held throughout the year. Inspirational and educational talks by faculty members and citizens of Marshall or by leaders on the campus were the basic types of program. These were contrasted with interesting travel talks and frequent song fests or round-table discussions of the Christian aspect of leading political, economic and social problems.

The success of Sunday vesper services held in Young Hall during the previous year led to a continuation of these highly laudable worship meetings. The training in worship leadership and the spiritual fellowship of those who attended regularly are worthwhile additions to the religious

life of the campus. The cooperation of the Christian Associations in preparing these services and of individual members who furnished the excellent musical setting for them were the principal factors in their success.

The Y. M. C. A. has been fortunate in that Dr. W. W. Malcolm has continued to act as sponsor and adviser of the association. The cabinet, as pictured above, has been under the able leadership of Raymond Campbell.

THE Y. M. C. A.

For the second year, the Y. M. C. A. has staged with great success a minstrel. As previously, the minstrel was under the direction of Pyron McMillen. The platform and organ loft of Stewart Chapel were converted by Jack McMillen and his staff into the prow of a steamboat, the picturesque setting of the first act. Dialogue and pantomime were the chief characteristics of the second act, set in a hotel lobby. The lampooning of campus personalities was highly enjoyable.

Athletics

V CLUB

The V Club is composed of Missouri Valley College athletes who have won a letter in any one of the three major sports: football, basketball or track. The history of the organization goes back for many years, and the roster of former members, recently prepared by Wylie F. Steen, Alumni and Field Secretary and formerly a member of the Club, includes many of the prominent alumni of Missouri Valley.

The purpose of the organization is to uphold, maintain and promote clean and wholesome athletics and to cooperate in every way with the department of athletics in all its efforts to preserve the high morale of the student body of Missouri Valley College. The sincerity of the members is attested by their rigid adherence to

the rules of good sportsmanship after college years are over.

The V Club holds an initiation week after each season and all men who have earned a letter for the first time are submitted to tests of fortitude and agility. One of the most ludicrous of all student chapels this year was the occasion of the program furnished by the exceptionally large class of initiates following the football season. Madame Butterfly, impersonated by Ralph Duggins, led a ballet chorus in a riotous performance.

The V Club was led this year by Owen Taylor, captain of the M. C. A. U. All-Stars, 1933.

Front row—Long, Runkle, Abney, Taylor, president, Yates, Richards, Duggins.
Second row—Sebastian, Leech, Freeman, Glenn, Brown, Libby, Holloway, Coach Godfriaux.
Third row—Place, Robertson, Rea, Carr, McCollum, Steele, McKelvey.



M. V. C. Library

Social



The Sigma Phi sorority is the youngest of the social groups of the campus, yet it has definitely established itself as the equal of any. Its history dates from the organization of a group of campus leaders into a sorority in September, 1930. The presidents since that time have been Misses Fern Nave, Eileen Robertson, Josephine Evans and now Dorothy Holsteen.

To further the high standards of social life on Missouri Valley's campus, and to develop scholarship, loyalty, attractiveness and graciousness among its members, constitute the ideals of Sigma Phi.

The social program of the sorority includes parties just prior to the initiation of pledges, an informal dance and a formal dance in the spring. The formal dance this year was given in Morrison Gymnasium on April 29, the first formal of the spring social season. The decorations were quite attractive, the motif being the May Day festival.

The members of the sorority as pictured above are:

Top row—Misses D. Holsteen, Bowlin, Tobin, Pettijohn, Hudson, Mitchell.

Second row—Misses Gore, Bell, Cline, B. Huston, Ferguson, Koller.

Third row—Misses Reading, Valkenburg, Boatright, Traugher, E. Holsteen, Abney.

The officers, who have been most faithful in their duties are: President, Miss D. Holsteen; vice-president, Miss Bowlin; secretary, Miss Bell; treasurer, Miss Cline. Miss Madeline Ashton is sponsor to the sorority.

SIGMA PHI

Social

VALKYRS

The Valkyrs were originally a pep club called the "Zoorieites", established in 1922. The present name was adopted in 1924. The name "Valkyrs" was drawn from Norse mythology and has the connotation, "companion to the Viking". In the fall of 1930, the club became a sorority.

The presidents of the Valkyrs, who have been among the leaders in campus life, have been: Mrs. "Blue Eyes" Belwood Pinkston, Mrs. Ruby Asbury Pickering, Mrs. Dot Hyland Schooley, Miss Frances Lou Fletcher, Miss Helen Mahr, Miss Clementine Genz, Miss Mary Catherine Ryan, Miss Virginia Barlow, and the office is now held by Miss Josephine Moore. Miss Sallie Margaret Evrard is sponsor to the sorority.

The basic ideals of the club are the fostering of scholarship, loyalty and friendship, so that all members may be a symphony of helpfulness and high purpose.

The members of the sorority as pictured below are:

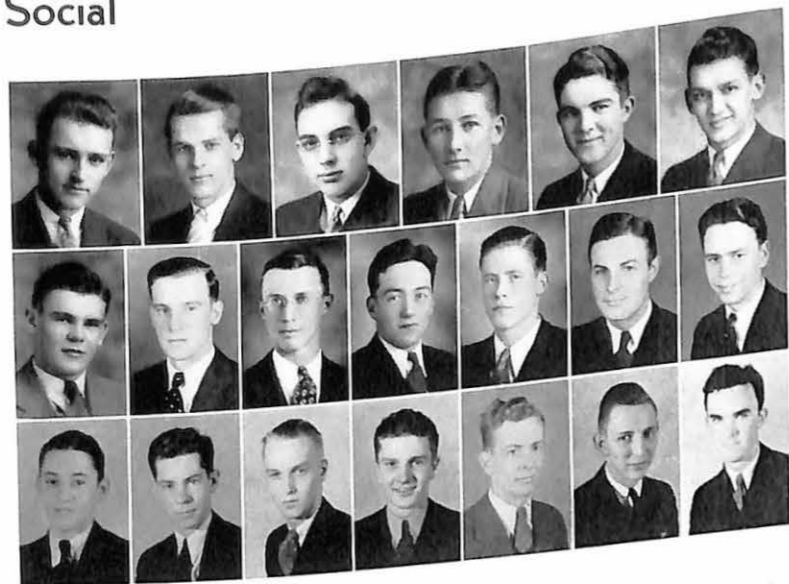
Top row—Misses Thompson, Winn, Reid, Duncan, Jeter, Moore.

Second row—Misses McLeod, Guthrie, Christie, Robinson, Kirkpatrick, Erwin.

Third row—Misses Roberts, Yeager, Brown, Gooch, C. B. Houston, Gabelman.

Fourth row—Misses Fritts, Miller, Howe, Boeger, Foster, Jones.





The Alpha Delta Kappa Fraternity, as the only local fraternity on the campus, has made rapid advance in the past few years. Its membership now includes many of the campus leaders in scholarship and extracurricular activities. The fields in which its members are particularly prominent are athletics, forensics and student government.

The social program of the fraternity includes steak fries, an informal dance during the winter season and a formal dance in the spring. The formal this year was one of the highlights of campus social life. The guests were numerous, several coming from some distance. The decorations were the most striking that have been executed in many years. The dance was held in Morrison Gymnasium, May 12. A garden scene was represented, complete even to a fountain with colored lights playing upon it.

The fraternity has been ably led by its officers: John Billings, grand chancellor; Ralph Duggins, chancellor of the counsel; Clarence Arndt, chancellor of the seal; J. Roger Buck, chaplain; A. Hamner Edmonds, guard; Justin McKelvey, pledgemaster.

The members of the fraternity as pictured above are:

Top row—Billings, McKelvey, Lentz, Duggins, Barnhill, Digges.

Second row—Dexter, Woodsmall, Buck, Arndt, Hansen, McCollum, Cline.

Third row—Carter, Edmonds, N. Russell, Myers, Steele, van der Maaten, Jessee.

ALPHA DELTA KAPPA

SIGMA NU

Since its revival on December 19, 1931, Beta Gamma chapter of Sigma Nu Fraternity has stepped steadily forward in fraternity rank. Each member of the organization has taken an active part in at least one major activity on the campus, and each has endeavored while doing so to give of his best ability to the promotion of the welfare of the college, and thus bring honor to himself as well as to the fraternity.

Sigma Nu is the only national social organization on the campus. Beta Gamma chapter was first founded at Missouri Valley College in 1891. After a few years existence, national fraternities were banned from the college campus by a ruling of the faculty and administration. Upon the repeal of this rule, the chapter was revived amid pomp and ceremony on December 19, 1931.

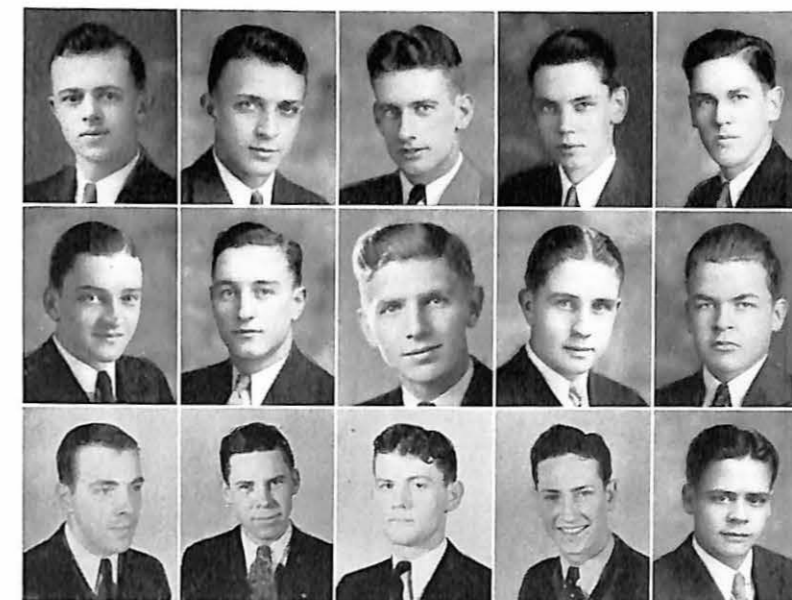
The fraternity was led this year by the following officers: Randall Hains, eminent commander; Allen Brown, lieutenant commander; Robert Johnson, recorder; John Irvine, chaplain; Charles Simpson, sentinel and marshal.

The members of the Beta Gamma chapter of Sigma Nu, as pictured below are:

Top row—Hains, J. Irvine, Brown, Galloway, Pence.

Second row—Hillhouse, Freeman, Simpson, Ferguson, W. Irvine.

Third row—Johnson, Robertson, Schutte, Johnston, Petry.



Basketball



Front row—Arndt, A. Long, Digges, Leech, Sullivan, Dexter, Harlan, Pence, Barnhill.
 Second row—Goodwin, Robertson, Davis, J. Long, Rea, McCollum, McKelvey, Abney, Coach Godfriaux.

BASKETBALL---1934

Although the 1934 season was not an outstanding success measured in games won and lost, it is safe to venture the fact that the team this year was the best to represent Missouri Valley College in six years. Four conference games were won rather handily by the Viking basketballers, and several were lost by narrow margins.

Coach Godfriaux at the start of the 1934 Missouri College Athletic Union race had but four veterans with which to form a formidable entry in the conference. To add to his difficulty, Captain-elect Charles Sparks was declared ineligible after the first game with Westminster. Nevertheless, a group of thirty-five aspirants were on hand and from this material, a final squad of twelve men was finally selected to represent Valley.

The early season victory over the rival Central Eagles sounded a warn-

ing to the other schools on the Valley schedule. Games followed in which an early lead gradually developed into one or two point losses for the inexperienced Viking cagers, but at no time did the spirit of fighting-to-win fail to survive these defeats.

The season's record:

Valley, 31	-----	Kemper, 15
Valley, 23	-----	Westminster, 28
Valley, 22	-----	Central, 21
Valley, 23	-----	Tarkio, 36
Valley, 22	-----	Kemper, 10
Valley, 28	-----	Wm. Jewell, 29
Valley, 24	-----	Rolla, 28
Valley, 15	-----	Drury, 20
Valley, 22	-----	Drury, 21
Valley, 22	-----	Culver-Stockton, 41
Valley, 19	-----	Rolla, 16
Valley, 25	-----	Central, 44
Valley, 26	-----	Wm. Jewell, 21
Valley, 25	-----	Tarkio, 27
Valley, 24	-----	Westminster, 40
-----		-----
351		387

Basketball



COACH GODFRIAUX, to whom must go the credit for producing the fine players and excellent sportsmen for which Valley has become noted during the many years he has coached the Vikings. The students know Coach as a fair-minded leader of men, worthy of all respect, admiration and co-operation.

REA, PETE

Not many could out-jump him at center, and his accurate shooting and defense work contributed no little to the team's success. He was chosen to lead the squad of next season.

MCKELVEY, JUSTIN

He fulfilled all the requirements for an efficient guard with his coolness and smooth-handling of the ball.

DEXTER, DAVE

His speed and accuracy as a forward placed him high among the Viking scorers.

LEECH, HOMER

A shifty guard with a remarkable adeptness in handling the ball.

SULLIVAN, RAYMOND

"Sid" in his position at forward was a power in offensive play.

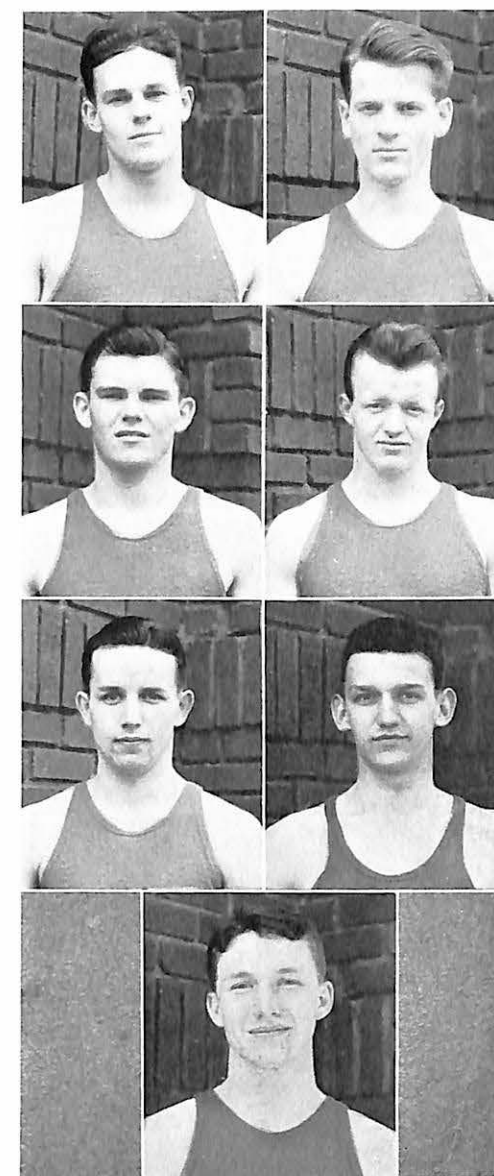
DIGGES, HAYDEN

He was a consistent player at guard and has brilliant prospects for three more successful years.

LONG, JAMES

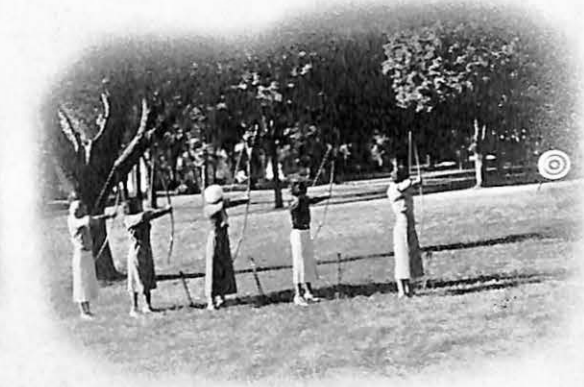
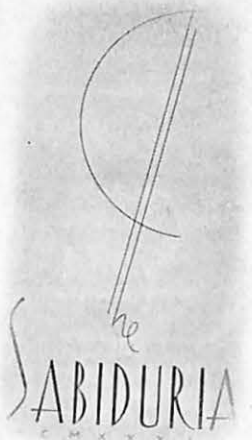
His play at center was excellent and a big factor in the strength of the squad.

Of the seven lettermen, only two, Rea and McKelvey, are upperclassmen. As all will return next year, prospects for 1935 are bright.



SHOWERS and sunshine and sometimes a sudden snow But the world is gay Can we be else but so? CWA men hack, hew and delve Track men run their legs off Students study their eyes blind May Fete aspirants shout themselves hoarse and dance themselves lame Lovers play tennis or, more often, seek the fountain or a bench The double sextette travels and grades decline The Sabiduria Staff sweats and toils and burns the midnight oil The May Queen holds her court The formal dances whirl us from one week to the next There are banquets The Seniors are graduated with a sigh of mingled relief and sadness at parting Dizzily we take examinations And thus the year is spent Such is

S P R I N G



O Spring! of hope, and love and youth, and gladness,
Wind-winged emblem! brightest, best and fairest!
Whence comest thou, when, with dark winter's sadness,
The tears that fade in sunny smiles thou sharest?
Sister of joy, thou art the child that wearest
Thy mother autumn, for whose grave thou bearest
Fresh flowers, and beams like flowers, with gentle feet,
Disturbing not the leaves which are her winding sheet.

—SHELLEY.

MISS JOSEPHINE MOORE
Queen of the May



MISS ROXIE BROWN
Queen of the Seniors



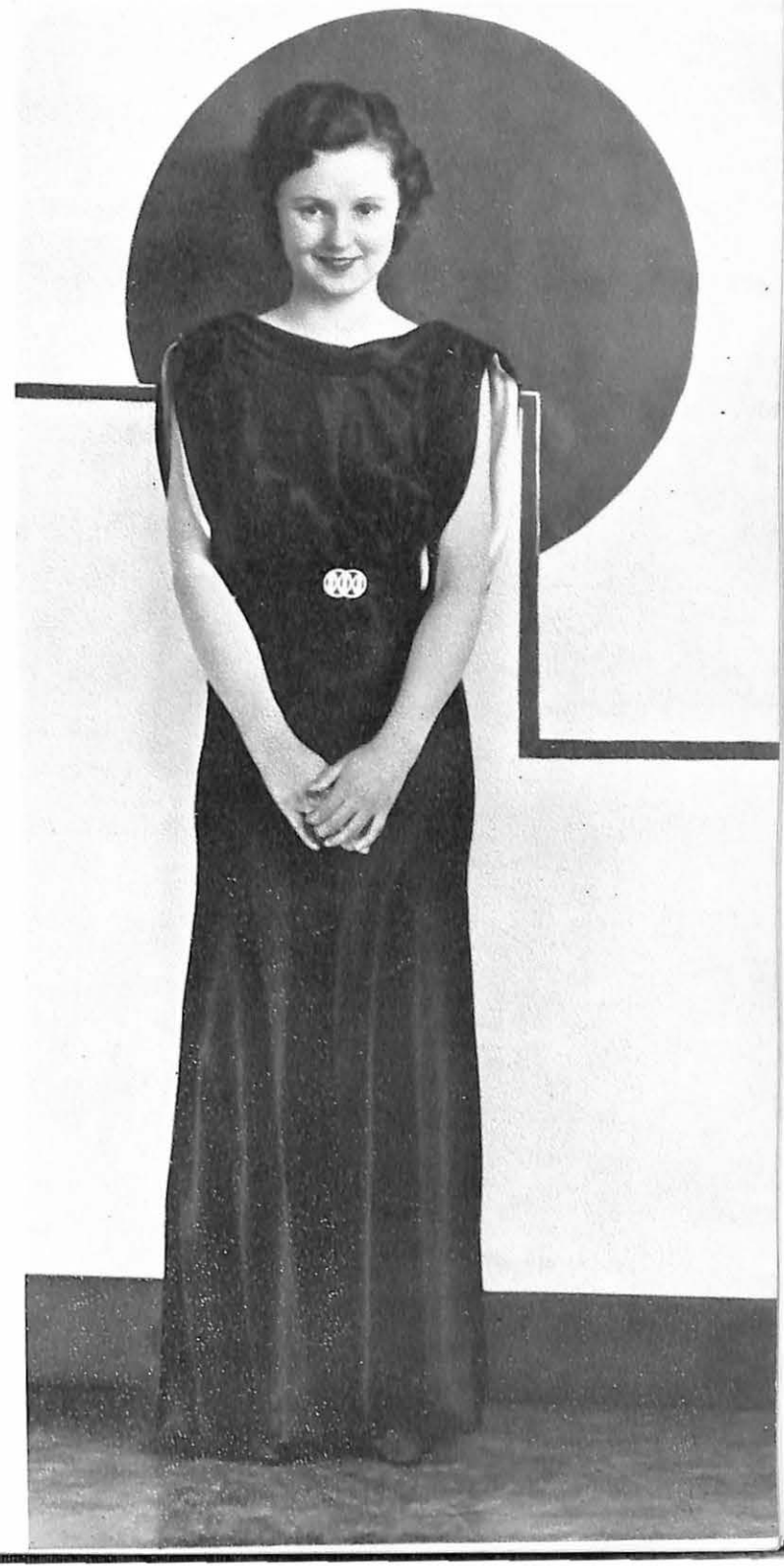
MISS DOROTHY DUNCAN
Queen of the Juniors



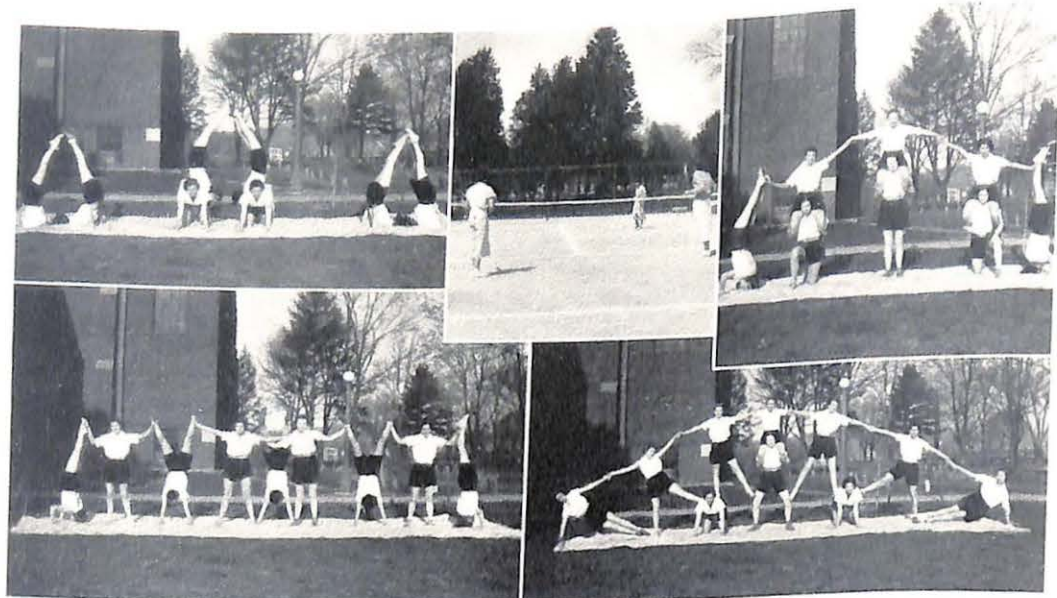
MISS HARRIET JONES
Queen of the Sophomores



MISS LUCILE McALLASTER
Queen of the Freshmen



Women's Athletics



WOMEN'S ATHLETICS

An organization that has been marked by definite progress this year, is the department of Women's Athletics. Miss Marjorie Robertson's untiring efforts and enthusiasm for promoting sports among the women of the campus, has been responsible for much of the success.

The program sponsored by the national organization of the Women's



Athletic Association has been of great benefit to the school. The slogan of this group has been "a sport for every girl and every girl in a sport." The W. A. A. stresses intramural contests rather than the old type of varsity teams. Last fall hiking and hockey occupied the top of the program. Tap dancing, basketball and volley ball also had their allotted time to offer a taste in collective and individual work. The spring schedule had emphasis upon outdoor baseball, tennis, hit pin baseball and again hiking. Notable work has been shown in promoting interest in the most fascinating of all sports, archery. The annual singles tennis tournament has done much to promote appreciation for outdoor sports, as it determines the tennis champion of the campus.

MISS MARJORIE ROBERTSON
Director of Women's Athletics

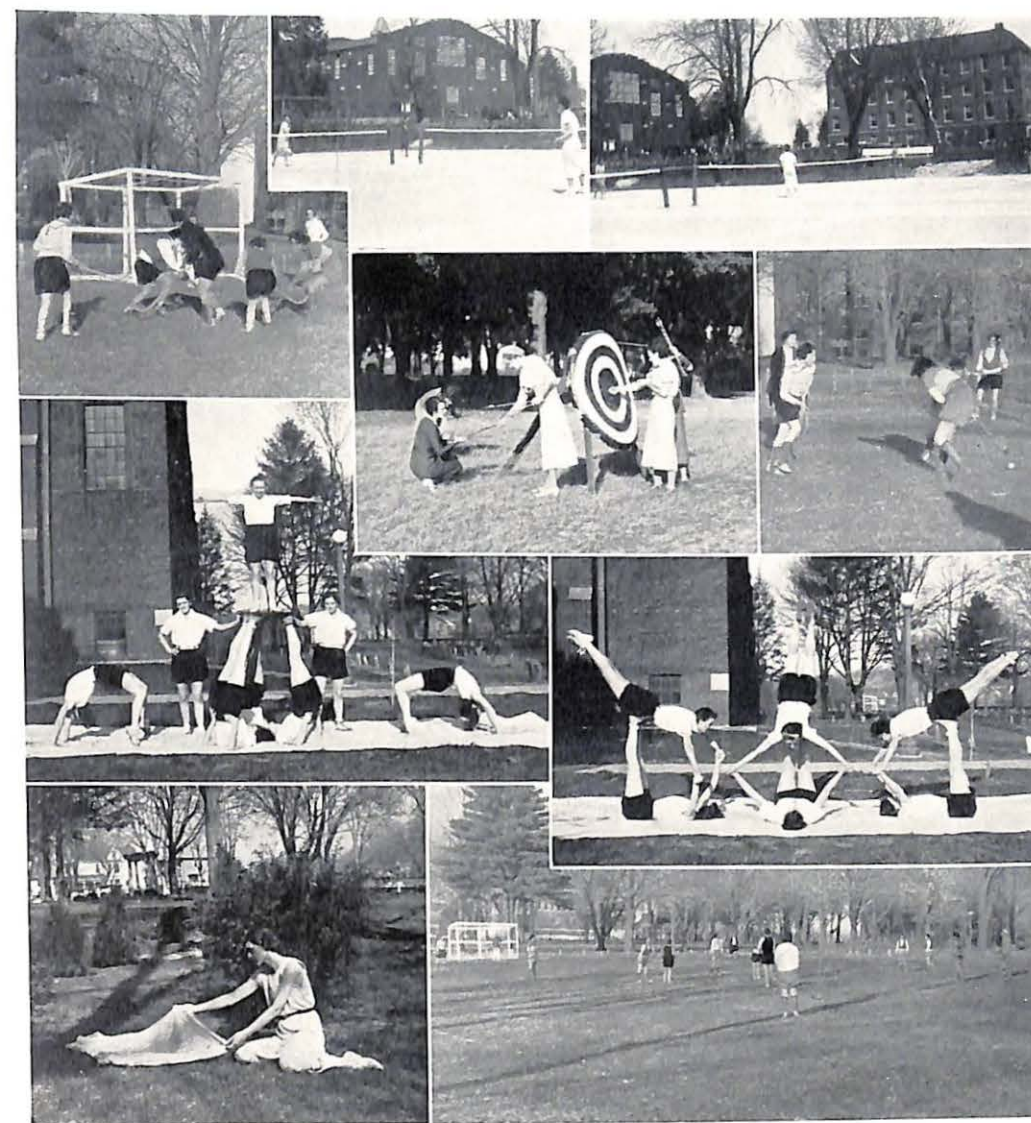
Women's Athletics

A division worthy of mention in this field of work is the tumbling team composed of twelve girls, who gave several public performances. The interpretative dancing class is also a prominent feature of the work. This year, as in others, they assisted the dramatic department in producing the dances for the May Fete.

For several years students of physical education have participated in the annual Play Day at Missouri University. This is held for the

benefit of Missouri college women interested in sports and has done much to promote greater appreciation of outdoor life at Valley. Tennis, soccer, swimming and baseball occupied the central part of the day's program this year.

Much praise is due the director of physical education and the group of W. A. A. students who are so vitally interested in athletic activities for women.



M. V. C. Libre

Track



19 was the climax of the season's activities on the cinder path.

TRACK---1934

Missouri Valley this season had probably the best team in the history of the school, although all but three members of the squad were Freshmen. After losing the first two meets to Central and William Jewell, the Vikings came back to win a triangular meet with the Kemper and Wentworth Military schools with unexpected strength. Westminster handed Valley's inexperienced team its third setback, but the Drury Panthers fell victims to the Vikings tracksters in the last dual of the season.

Captain-elect Wesley Steele, star of the 1933 Missouri College Athletic Union, was declared ineligible at the beginning of the second semester and Bill Butts, dash man of the year before, failed to return to school. Faced with such a gloomy outlook for the 1934 track schedule, Coach Godfriaux proceeded to mold a group of first year men into a team that eventually proved to be a real threat in conference competition.

The state meet, which was held on Gregg-Mitchell Field, May 18 and

Richard Freeman proved himself steady, dependable distance man in each dual meet. He is a junior and should be a real conference threat next year.

Pete Rea, another one of the three veterans from last year's squad, is probably one of the most versatile athletes in the M. C. A. U. He has won letters at Valley in football, basketball and track. In the latter sport he is an excellent high-jumper, a broad jumper and a better-than-average pole vaulter. He is also a junior.

Frank Robertson has lettered before in track, specializing in the javelin and the high-jump. Robertson is a sophomore.

Homer Leech runs the 120-yard high hurdles, the half-mile relay, high jumps and is a sure point-winner in the javelin throw. Leech is another of the three-letter men.

Luther Chisman is a sincere, hard-working man who has proved his dependability in the mile and two mile runs.

Track



Front row—Ethridge, Harlan, Dexter, James, Coach Godfriaux, Leech, McAdow, Libby, Place.
Second row—Freeman, Long, Rea, Carr, Chisman, Robertson.

Willard Ethridge this season reported for track for the first time in his life, having had no high school experience. Ethridge runs the sprints and is a member of the half-mile relay team.

Paul Libby has shown up well in the low hurdles, the broad jump and on the relay team.

Robert Place is a broad jumper of merit who is usually good for some points in every meet. He occasionally enters the high-jump and the pole vault.

Caryll Cline pole vaults with exceptionally good form and will be a sure conference threat with another year of competitive experience.

Dell Harlan is undoubtedly the star of the 1934 Viking track season. He has not been defeated in the 880 yard run in three years, having won every start this year in dual meets. He is also a good quarter miler.

Tommy James is a hard working man who has run the quarter in good

time all year, besides being a member of the mile relay team.

Dave Dexter has regularly garnered points in the 100 and 200 yard dashes, besides being a good low hurdler and a strong relay man. He had never performed in track before coming to Valley.

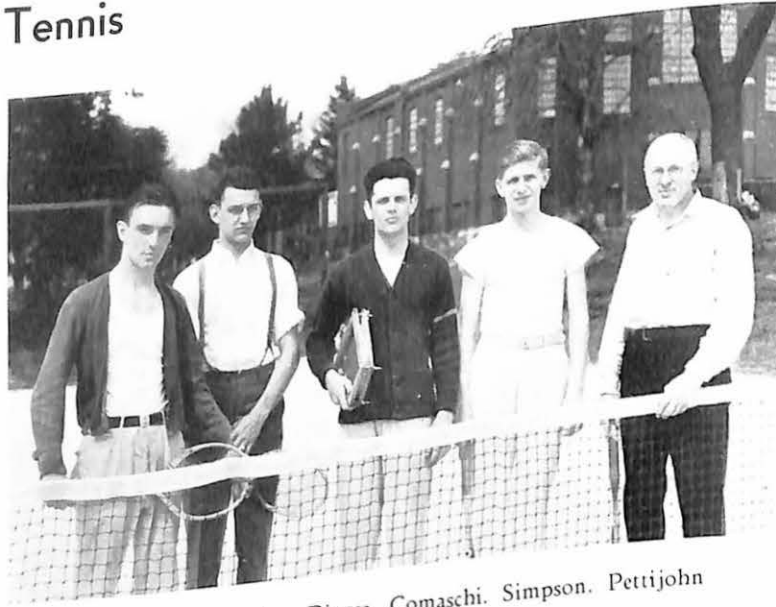
Jimmy Carr, former Kansas City Interscholastic weight champion, has been defeated in the shot only twice this year. He is an excellent discus thrower as well and consistently makes 122 feet.

Shelton Abney runs the 440-yard dash in good time, besides being a member of the mile relay team.

Lewis McAdow has performed consistently in the high hurdles and promises to be a stellar performer in his three remaining years under the Viking colors.

Jimmy Long, versatile performer in the discus and the shotput, has won letters in all three major sports this year.

Tennis



Left to right—Dredge. Digges. Comaschi. Simpson. Pettijohn

TENNIS---1934

The 1934 Tennis season was unusually successful. Out of the thirty-six matches played with representatives of neighboring colleges, Valley men won twenty-three of them. Judging on the basis that only two of the squad had played on the team before, this percentage is quite good.

LOUIS COMASCHI—Captain Louis is a player of marked ability. His consistent and powerful service was a determining factor in many matches. This is Louis' fourth year on the team. Each year he has held his place as ranking number 1 player. The sincerity and interest that he has shown in the last four years as captain, will be greatly missed next year.

CARL FRANK—Carl is a player who showed up very well this season. He is experienced and plays a "heady" game as well as a hard one. His service is fast, and he has a deadly forehand drive.

ARTHUR LONG—This season was Arthur's first attempt at collegiate competition. He showed up very well. Fans remember him as a player who was always trying, and, in addition, achieving.

CHARLES SIMPSON—Charles is a three-year man who has played a good season. His backhand drive is remarkable and has helped him to win many seemingly impossible points.

HAYDEN DIGGES — Although Hayden did not participate in inter-collegiate play this year, he has great promise for next year.

ROBERT DREDGE—Robert is a two-year man who may be said to have learned how to play and has won a ranking on the squad in two years.

DOCTOR EARL PETTIJOHN—The coach has provided excellent instruction for the team and his accurate placements and general ability have served as a challenge to the squad.

Music



Standing, left to right—Edith Jeter, accompanist; Maurice Sevedge, Louis Hansen, James Long, Lowell Johnston, Laten Carter.

Seated—Lilyan Thurman, Elizabeth Bowlin, Dorothy Duncan, Adeline Koller, Dorothy Reid, Vivian Valkenburg.

DOUBLE SEXTETTE

The Double Sextette, composed of students selected from the School of Music, under the direction of Dean Claude L. Fichtorn, has completed a successful series of concerts in Missouri. Their schedule included programs in St. Louis, Kansas City, Excelsior Springs, Moberly, Macon, Mexico, Lexington, Richmond, Slater, Glasgow, Boonville, La Plata, Shelbina, Sedalia, and for many occasions in Marshall. One of the Kansas City trips was concluded by a radio broadcast over Station WDAF.

The soloists of this group were Miss Adeline Koller and Miss Vivian Valkenburg, sopranos; Miss Edith Jeter and Miss Lois Collins, piano; Mr. Charles Sparks, tenor; Mr. Lowell Johnston, baritone; Mr. Louis Hansen, trumpet. Mr. Hansen was

also assistant director. The accompanists were Misses Edith Jeter, Lois Collins, Dorothy Duncan and Elizabeth Bowlin.

This organization, initiating a new type of promotion work for the college, under the supervision of Mr. Wylie F. Steen, Alumni and Student Secretary, has appeared in thirty-nine concerts, both sacred and secular. The programs were given in churches, high school assemblies, banquets and numerous other functions. The travel of the group covered approximately 2500 miles.

These programs, as given, consisted of selections by well-known composers and were representative of the music of several nationalities. The Double Sextette was well received in the places visited, and the College has been greatly benefitted by their excellent performance.

Honorary



Top row—left to right, Roxie Bee Brown, John Billings, Robert Sutton, president.
 Second row—Mary Vance, William A. Ferguson, Elizabeth Winn.
 Third row—J. Roger Buck, Helen Hamilton, Robert Johnson.

PI KAPPA DELTA

The securing of a chapter of Pi Kappa Delta on the campus of Missouri Valley College was the greatest achievement of the college year. Pi Kappa Delta is a national forensic fraternity with one hundred and fifty chapters in senior colleges and universities of the United States and its possessions. The annual questions for debate most widely used in intercollegiate competition are selected by this fraternity.

DOCTOR C. B. SPOTTS has been the earnest and capable leader in the development of a forensic group worthy of recognition by Pi Kappa Delta. Without his counsel no such advance could have been made.

Missouri Valley has long been a strong competitor of Pi Kappa Delta schools in this and other states. In March, 1932, Dr. C. B. Spotts and a team of debaters, Cecil Lower and Robert Sutton, attended the biennial tournament and convention of Pi Kappa Delta at Tulsa, Oklahoma, where they presented the petition of the Missouri Valley College Forum for a charter. The charter was not granted until this year, when Dr. Spotts and his debaters, John Billings and Robert Sutton, attended the convention at Lexington, Kentucky, April 1-6, and received the charter.

The members of the Missouri Lambda chapter of Pi Kappa Delta are: of the Order of Debate, Roxie Bee Brown, John Billings, Robert Sutton, Mary Vance, William A. Ferguson, Elizabeth Winn, J. Roger Buck, Robert Johnson, Willard Ethridge and Lewis McAdow; of the Order of Oratory, Helen Hamilton, Randall Jessee and Robert Sutton; of the Order of Instruction, C. B. Spotts and C. L. Miller. Willard Page, '30, is a graduate member.



Publications

SABIDURIA---1934

The Sabiduria staff this year was handicapped by a most restricted budget. The student assessment for the book was cut by the Student Senate in March, 1933, from four dollars per year to two dollars. The further problem of a decline in advertising sales added to the difficulty. Through close cooperation of the editorial and business staffs, it has been possible to carry on.

Nonessentials and excessive ornament have been eliminated and by the use of simple, attractive layout, the staff feels that it has continued the tradition in a most commendable manner.

ROBERT SUTTON has had year-book experience, having been business manager of the 1933 Sabiduria, and was able to carry out the needed editorial reorganizaitions and economies.

CLARENCE ARNDT with great patience and relentless pursuit of his task has more than accomplished what is to be expected of a business manager.

The Staff

- Top row, left to right—
 ROBERT SUTTON, editor
 ROXIE BROWN, associate editor
 CLARENCE ARNDT, business manager
- Second row—
 MARGARET TOBIN, organization editor
 DAVID DEXTER, sports writer
 ALMA HUDSON, Junior editor
- Third row—
 RANDALL JESSEE, activity editor
 HELEN HAMILTON, Kollege Sity editor
 GEORGE LARUE, staff photographer
- Fourth row—
 LOUIS HANSEN, caricaturist
 KITTY SUE THOMPSON, snapshot editor
 ELIZABETH WINN, Senior editor; editor, 1935.
- Fifth row—
 JAMES BAKER, sports writer
 RACHEL MCLEOD, Freshman editor
 JEAN GUTHRIE, assistant business manager.
- Sixth row—
 VIRGINIA THWEATT, sophomore editor
 JEAN GUTHRIE, assistant business manager
 MARY YEAGER, Freshman editor



Juniors



ORVILLE MCCOLLUM, *President*
Brookfield
MARGARET TOBIN, *Vice-President*
Marshall

DOROTHY DUNCAN, *Junior Queen*
Kansas City
J. ROGER BUCK, *Secretary-Treasurer*
Marshall

WILLIAM GALLOWAY
Carthage
ALMA HUDSON
Iola, Kansas

CONSTANCE FILE
Merriam, Kansas
MORGAN HILLHOUSE
Carthage

HOMER WAMPLER
Jasper
BETH BLACHLY
Kansas City

Juniors



RANDALL HAINS
Marshall

LEONA STOENNER
Levasy

RUTH DUNCAN
Marshall

ARTHUR LONG
Malta Bend

GEORGE LARUE
Marshall

HELEN BOEGER
Morrison

VIRGINIA CATON
Mt. Leonard

CARL HEUMANN
Blackwater

Out of the nowhere into here,
103 Freshmen were dropped one year.
Today they're the Juniors, setting the pace:
Tomorrow they'll be Seniors, winners of
the race.

Juniors



HAROLD BROWN
Brookfield

GEORGE YATES
Yates



RICHARD FREEMAN
Carrollton

OVERLY MYERS
Kansas City



WESLEY STEELE
Sedalia

HAMNER EDMONDS
Miami



RALPH DUGGINS
Marshall

J. W. LENTZ
Marshall

As the sun sets upon another year, the class of '35 looks back upon its hopes and ambitions, plans and achievements. One hundred and three began the race, and forty are still competing. We suffered that September of '31, suffered pain that only a paddle can inflict; yet we felt somewhat like the martyrs of old, for we knew that never more need freshmen suffer as we had. In

looking back we remember how small, and yet how important we felt, and we determined that someday all of Valley would notice us with pride, and with this determination we elected Pete Rea as our President, and were we right? By the end of the next year, 1933, our president had been elected President of the Student Body, and now this year another member of our class

Juniors



DORIS PEMBERTON
Marshall

JACK McMILLEN
Versailles



FRANCES CLINE
Appleton City

ELIZABETH WINN
Marshall



DOROTHY REID
Marshall

JOHN H. DRISLER
Stater



PETE REA
Marshall

CHARLES SIMPSON
Kansas City

occupies that office. Other of our members have further distinguished the class of '35, holding important offices in practically every organization, and now as we come to the close of this, our Junior year, we hold fast to our dream of reaching the summit of the hill that we have been climbing for three years, and from the summit

see the sun rise to glorify another year, our last year at Valley. We dare not pause too long to look back, for we have lovely visions ahead, and the beauty of tomorrow must be caught and held so that long after the sun has set on our last year, a great light shall still linger in the heavens, as a memorial to the class of '35.

Seniors



JOHN BILLINGS, A. B. Marshall
Class President
 Beta Gamma Phi. 4; Honor Roll. 1, 2, 3, 4; Alpha Delta Kappa. 1, 2, 3, 4; Grand Chancellor. 4; D. A. C. 1, 2, 3, 4; President. 3; "Queen's Husband". 1; "Midsummer Night's Dream". 1, 4; "The Fool". 2; "As You Like It". 2; "School for Scandal". 3; "Much Ado About Nothing". 3; Student Senate. 3, 4; Vice-president. 4; Treasurer. 3; College Choir. 3; Delta Staff. 2, 3, 4; Sabiduria Staff. 1; Y. M. C. A. 1, 2, 3, 4; Treasurer. 4; Pep Squad. 3; Forum. 1, 2, 3, 4; Pi Kappa Delta; Winner. Brandon Lincoln Essay Contest. 3.

ROXIE BEE BROWN, A. B. Odessa
Secretary-Treasurer
Class Queen
 Three year student.
 Secretary to the Dean and Registrar. 3; Secretary to Student Alumni Secretary. 1; Beta Gamma Phi. Secretary. 3; Pi Gamma Mu. 3; Pi Kappa Delta charter member. 3; Valkyr. 1, 2, 3, 4; Vice-president. 3; Honor Roll. 1, 2, 3; Y. W. C. A. 1, 2, 3; Cabinet. 1; W. A. A. 3; Pep Squad. 3; Sabiduria Staff. 1, 2, 3; Associate Editor. 3; Secretary-Treasurer of class. 2, 3; Forum. 2, 3; Campbell Hall. House Council. 1; "Pirate Phantasy". 1; Second in Missouri Debate Tournament. 3.

FRANCES GORE, A. B. Sweet Springs
 Three year student.
 Pi Gamma Mu. 3; Sigma Phi. 2, 3; Y. W. C. A. 1, 2, 3; Birkhead Hall. House Council. 3; Honor Roll. 1, 2, 3; Highest Ranking Honor Student. Sophomore year.

DOROTHY HOLSTEEN, A. B. West Point, Iowa
 Pi Gamma Mu. 4; Sigma Phi. 1, 2, 3, 4; President. 4; Vice-president. 3; Y. W. C. A. Cabinet. 3; W. A. A. 2, 3, 4; Tumbling Team; Pep Squad. 3; Queen Attendant. 1; Women's Glee Club. 1, 2; Orchestra. 1, 2, 3, 4; Band. 1, 2, 3, 4; College Choir. 3, 4; Honor Roll. 1.

JOHN IRVINE, JR., A. B. Marshall
 Three year student.
 Sigma Nu. 1, 2, 3; Chaplain. 3; Pi Gamma Mu. 3; Forum. 1; Science Club. 2; President. 2; Sabiduria Staff. Associate Editor. 2; Vice-president of class. 2; Honor Roll. 1, 2, 3.

BETTY PETTIJOHN, A. B. Marshall
 Three year student.
 Beta Gamma Phi. 3; Pi Gamma Mu. 2, 3; Sigma Phi. 3; Y. W. C. A. Science Club. 2; Honor Roll. 1, 2, 3; Highest Ranking Honor Student. 1.

HELEN GABELMAN, A. B. Weber Groves
 Harvest Queen. 3; Valkyr. 1, 2, 3, 4; Secretary-Treasurer. 2; D. A. C. 1, 2, 3, 4; Treasurer. 2; "Whole Town's Talking". 2; "Midsummer Night's Dream". 1; "As You Like It". 2; "Much Ado About Nothing". 3; "The New Word". 4; Women's Glee Club. 1, 2; Honor Roll. 1, 2; "Pirate Phantasy". 2; "Doll Shop". 3; Tumbling. 2; Interpretative Dancing. 3, 4; Y. W. C. A. Secretary. 2; W. A. A. 1, 2, 3, 4; President. 3; Secretary. 2, 4; W. S. G. A.

ALLEN BROWN, Ph. B. Slater
 Sabiduria Staff. 1; Delta Staff; Sigma Nu. 2, 3, 4.

And so one of the goals is now reached! It is a closing of scholastic books for many of those graduating and an opening of a much larger and much more synthesizing book: the book of life. Application of those principles that have been learned, and the respon-

sibility of helping other adults to keep this a peaceful world economically, religiously, politically, and morally is the duty of these thirty-four seniors. Of the thirty-four there are sixteen well-informed and eager young women most of whom are planning to enter the

Seniors



MARGARET MITCHELL, A. B. Marshall
 Beta Gamma Phi. 4; Pi Gamma Mu. 3, 4; President. 4; Vice-president. 3; Sigma Phi. 3, 4; D. A. C. 2, 3, 4; Secretary. 2; Y. W. C. A. 1, 2, 3, 4; Cabinet. 2, 3; W. A. A. 3, 4; "Thirteenth Chair". 1; "The Fool". 2; Honor Roll. 1, 2, 3, 4; Tumbling. 3, 4; "The Doll Shop". 3.

MARTHA EMMERSON, A. B. Marshall
 Pi Gamma Mu. 4; Y. W. C. A. 1, 2, 3, 4; W. A. A. 2, 3, 4; Orchestra. 1, 2, 3, 4; Band. 1, 2, 3, 4; College Choir. 4; Honor Roll; Tumbling Team.

JOSEPHINE MOORE, A. B. Memphis
 Three year student.
 May Queen. 3; Class Queen. 1; Valkyr. 1, 2, 3; President. 3; Pi Gamma Mu. 3; W. A. A. 1, 2, 3; Pep Squad. 2, 3; W. S. G. A. 3; Campbell Hall. House Council. 2; "Doll Shop". 2;

ARNOLD BROWN, Ph. B. Slater
 D. A. C. 3; "Much Ado About Nothing". 3; Y. M. C. A. School. 4; Orchestra. 1, 2, 3; Band. 1, 2, 3; University of Missouri, Law School. 4.

JOHN GUTHREY, JR., A. B. Marshall
 D. A. C. 1, 2, 3, 4; "Thirteenth Chair". 1; "Whole Town's Talking". 2; "School for Scandal". 3; "Much Ado About Nothing". 3; "The Old Lady Shows Her Medals". 4; Honor Roll; Pi Gamma Mu. 4.

MILDRED BALLEW, B. S. in Ed. Malta Bend
 Sigma Phi. 1, 3, 4; W. A. A. 4; Class Queen. 3; Women's Glee Club. 1; College Choir. 3; Warrensburg State Teachers College. 2.

ELIZABETH READING, A. B. Curryville
 Three year student.
 Pi Gamma Mu. 3; Sigma Phi. 1, 2, 3; D. A. C. 1, 2, 3; "Thirteenth Chair". 1; "You and I". 3.

LOUIS COMASCHI, Ph. B. Kansas City
 Alpha Delta Kappa. 1, 2, 3; Vice-president. 2; pledgemaster. 3; Treasurer. 3; Y. M. C. A. 1, 2, 3, 4; Minstrel. 3, 4; D. A. C. 3, 4; "Much Ado About Nothing". 3; "Echoes of War". 4; Tennis. 1, 2, 3, 4; Ranking No. 1; Men's Glee Club. 1, 2; College choir. 3.

field of teaching, others with goals unrevealed. The eighteen young men are ready to meet any other college graduate in competition and cooperation in business or in any other specific phase of living.

This class has been fortunate in having the newly in-

stalled synthesizing courses of literature and the sciences before its four college years were climaxed. There have been unusual members of the class: those young men and women who gave of their talents in every extra-curricular and curricular activity offered at Missouri Valley.

Seniors



JAMES RUNKLE, Ph. B. Chillicothe
V Club. 1, 2, 3, 4; Football. 1, 2, 3, 4; Men's Glee Club. 1, 2; Y. M. C. A.. Minstrel. 3, 4.

CHARLES SPARKS, A. B. Kansas City
V Club. 1, 2, 3, 4; Pep Squad. 3; Basketball. 1, 2, 3, 4. Captain. 4; Tennis. 1, 2. Ranking No. 2; Alpha Delta Kappa. 1, 2, 3; Delta. Business Manager. 4; Vice-President of Class. 1; Men's Glee Club. 1, 2; College Choir. 3, 4; Men's Quartet. 3; Double Sextette. 4.

BUENA JACKSON, A. B. Dunlap
Pi Gamma Mu. 4; D. A. C.. 1; Y. W. C. A.; W. A. A.. 1, 4; Pep Squad. 4; Orchestra. 4; Band. 1, 4; College Choir. 4; Honor Roll. 1, 2, 3, 4; Culver-Stockton. 1, 2, 3.

CORINNE JACKSON, A. B. Galt
Pi Gamma Mu. 4; D. A. C.. 4; "The Old Lady Shows Her Medals". 4; Y. W. C. A.. 4; W. A. A.. 4; College Choir. 4; Honor Roll. 1, 2, 3, 4; Trenton Junior College; Culver-Stockton College; Missouri University; Phi Mu Epsilon.

JOHN CONDON, A. B. Corder
Student Senate. 3, 4. Treasurer. 4; Pi Gamma Mu. 4; Tharsos Club. 1; Pep Squad. 3; Honor Roll. 2; Secretary-treasurer of class. 2.

ROBERT JOHNSON, A. B. Macomb, Illinois
Three year student.
Sigma Nu. 1, 2, 3. Recorder. 3; Forum. 1, 2, 3; Pi Kappa Delta. 3; Y. M. C. A.. 1, 2, 3. Secretary. 3; Delta Staff. 1; Honor Roll. 1.

WALTER L. MYERS, A. B. Annapolis
Chi Alpha. 3, 4; Student Pastor. 3, 4; D. A. C.. 2, 3; "The Fool". 2; "Much Ado About Nothing". 3; Y. M. C. A.. 1, 2, 3, 4. Treasurer. 3.

AUDREY BLACK, A. B. Marshall
Forum. 2; W. A. A.. 2; Honor Roll. 1, 2, 3, 4.

No one person or small group of the class need be named, for with a cooperative rather than individualistic spirit the entire class has worked for better organizations,

higher scholastic levels and a more ideal "Valley" than has been in the history of the school.

Seniors



CHARLOTTE ANN ABNEY, Ph. B. Napton
Honor Roll. 1, 2, 3, 4; College Choir. 3, 4; University of Missouri. 2.

ROBERT DREDGE, B. S. Laclede
Football. 1, 2, 3; Sigma Nu; Tennis.

ANNE BELL, A. B. Marshall
Pi Gamma Mu. 3, 4; Sigma Phi. 2, 3, 4; Secretary. 4; Y. W. C. A.; W. A. A.. 1, 2, 3, 4; Vice-President. 4; Student Senate. 4; Secretary-Treasurer of Class. 3; Queen Attendant. 4; College Choir. 3; Honor Roll. 1, 2, 3, 4; Tumbling Team. 2, 3, 4; "Pirate Phantasy". 2; "Doll Shop". 3.

MARY MARJORIE GOOCH, Ph. B. Meadville
Valkyr. 3, 4; W. A. A.. President. 4; Vice President. 3; Treasurer. 2; Tumbling team chairman. 3; "Pirate Phantasy". 2; "Doll Shop". 3; Pep Squad. 2, 3; W. S. G. A.. 3, 4; President. 4; Campbell Hall. President. 3; Harvest Queen Attendant. 4; Orchestra. 1, 2; Band. 1, 2.

ROBERT SUTTON, A. B. Marshall
Pi Kappa Delta charter president. 4; Forum. 1, 2, 3, 4. President. 4; Beta Gamma Phi. President. 4; Pi Gamma Mu. 3, 4; D. A. C.. 1, 2, 3, 4. President. 4; "Midsummer Night's Dream". 1; "Thirteenth Chair". 1; "As You Like It". 2; "School for Scandal". 3; "Much Ado About Nothing". 3; "You and I". 4; Student Senate. 3; Class President. 3; Pep Squad. 4; Honor Roll. 1, 2, 3, 4; Editor of Sabiduria. 4; Business Manager of Sabiduria. 3; Delta Staff. 1; Editor. Manual. 1; Y. M. C. A.. Cabinet. 1, 2, 3; College Choir. 4; Second Place. Brantest. 4; Winner State Peace Oratorical Contest. 3; Highest Ranking Honor Student. 1, 2.

G. RAYMOND CAMPBELL, A. B. Parsons, Kansas
Three year student.
Chi Alpha. 1, 2, 3. Chaplain. 3; Y. M. C. A.. 1, 2. President. 3; D. A. C.. 1, 2, 3; "The Fool". 1; "School For Scandal". 2; "Much Ado About Nothing". 2; "As You Like It". 1; Pep Squad. President. 3; Young Hall. President House Council. 3; President of Class. 2; Men's Glee Club. 2; College Choir. 1, 2, 3; Student Pastor. 1, 2, 3; Y. M. C. A. Minstrel. 2, 3.

WALTER PARKS, Mus. B. Marshall
Organist-Trinity Episcopal Church. 2, 3, 4; Y. M. C. A.; Men's Glee Club. 1, 2; College Choir. 3, 4.

PYRON McMILLEN, A. B. Versailles
Chi Alpha. 3, 4; Student Pastor. 3, 4; Y. M. C. A.. 3, 4; D. A. C.. 3, 4; "School For Scandal". 3; "You and I". 4; Director of Y. M. Minstrel. 3, 4; College Choir. 3; University of Kentucky; University of Illinois.

The following are not pictured:

OWEN TAYLOR, B. S. Brookfield
Football. 1, 2, 3, 4. Captain. 4; V Club. 1, 2, 3, 4. President. 4; Honor Roll. 3; Track. 1, 2.

3; Vice-president of class. 4; M. C. A. U. All-Star team. 3, 4. Captain. 4.

VERNON BECKER, A. B. Muncie, Kansas
Student Pastor; Central College. 1, 2; Y. M. C. A.. 1, 2, 3, 4.

Kollege Sity

Editor's note: Just remember—it's not me, it's the house council that says all the girls must wear soft-heeled shoes, and after all that's the way Birckhead Stables got its name—the girls all wear mules.

The following conversation was heard over Professor Spotts' backyard fence:

Mrs. Spotts: "Carl B. never knows what I go through when he snores."

Mrs. Hale: "Dick never misses his small change either."

In Domestic Science Miss Kopf made it quite clear that "Matrimony" is a serious word, and Miss May's little right-hand lady, Isabelle Denyven, piped up: "You're wrong. Matrimony is a whole sentence."

Suggested commencement day song: (seniors repeat in unison, please)

"Ill fares the land,
To hastening ills a prey,
Where seniors graduate,
And jobs decay."

Jessee: "My heart flames like a blazing fire."

Toby: "Don't be a fuel."

Dr. Manning was questioning the Miss Allen about her infirm-ary patient. "Have you kept a chart of his progress?" he inquired. The nurse replied, "No, but I can show you my diary." (Hey, hey, how am I doin'?)

J. W. Lentz's creed: "Make the world safe for pedestrians."

We most heartily endorse our famous, remarkable marvelous Brown-Dye as being fadeless—but not spotless!

These pictures of typical Roosevelt Scholars were taken exactly one hour apart and show the amazing speed of these determined and skillful laborers.

There must be something in the atmosphere about the library steps.



Kollege Sity



"In the spring a young man's fancy lightly turns to thoughts of love."

—Dr. Evrard.

"The fickleness of man leads to many changes ere one change of the moon. But anyway, on the campus today, the following love to spoon."

Kirkpatrick—Galloway
Holsteen—Redpath
Miller—Simpson
Brown—Dye
Berry—A. Brown
Moore—Hillhouse
Roberts—Dowell
Winn—McMillen
McClure—Comaschi
Banta—McCluney
Mitchell—Freeman
Duncan—Sparks
Thompson—van der Maaten
Traughber—Rea
Reid—H. Taylor
Howe—Glenn
Hudson—McDowell
Foster—Vandiver
Houston—Sebastian
Reading—Edmonds
Valkenburg—Carr
Holsteen, E.—Woodsmall
Ballew—McCollum
Tarrant—Thomas
McAllaster—Sevedge
Malcolm—Ferguson
Ewell—A. Russell
Robinson—Wilson
Hamilton—Ethridge
Christie—Billings
Pettijohn—Sutton

"Thus were they today, and he who guesseth of the morrow,
He shall surely come to sorrow."

Kollege Sity

Incomprehensible Examination in Campusology

Time for test: 7 p. m. to 10 p. m. weekdays, and to 11 p. m. on Saturdays. Campbell girls returning at 1:30 a. m. take the test from 2 a. m. to 5 a. m. Girls returning between midnight and 1 a. m. are requested to report others returning later.

I. Multiple choice:

1. The back steps of the library are for: (a) a fire-escape, (b) a laundry-chute, (c) a public-speaking platform, (d) a trysting place for lovers. ()
2. Buddy Purpus is (a) a child prodigy, (b) No. 52. (c) d'ya wanna buy a duck? (d) a city boy who made good in the country. ()
3. The correct spelling of the name of Valley's number 1 tennis player is (a) Momaschi, (b) Comanche, (c) Comascho, (d) unknown. ()

II. Matching test:

- | | |
|-----------------------|--|
| 1. Miss May | a. The best informed person on the campus. () |
| 2. Campbell and Gooch | b. "Now, don't you worry about a scholarship . . . " () |
| 3. Miss Yost | c. The coming bride. () |
| 4. Ralph Duggins | d. God's gift to the ladies. () |
| 5. Mr. Jordan | e. Faithful forever. () |
| 6. Mr. Steen | f. "How can I get out the cheapest way possible?" () |

III. True-false test:

1. I never necked on the campus. (Chi Alphas and W. S. G. A. need not embarrass themselves by answering.) ()
2. The benches on the campus are for picnics. ()
3. Dr. Malcolm conducted a whole class without saying a word. ()
4. John Guthrey sat through a class without raising a single objection. (This can be true only if 3 is true.) ()
5. Bill Galloway accepted an invitation to join the Chi Alphas. ()
6. If you want the comprehensive exams to pass,
Don't fail to be in Mrs. Huff's class;
She's awfully tough on both you and me,
But you're gonna find just how right she can be!
When she asks, "Who did what, when, and why"
It ain't the time to heave a big sigh;
'Cause that who with his what and all of the rest
Is sure you on some darn comp test.
She's terribly hard? Don't try to tell me—
I have her every day, you see;
But keep up your chin, and learn everything—so
You'll get the thrill of finding a question you know. ()

Dedicated to the Sabiduria Advertisers

These advertisers have contributed their support toward making the 1934 Sabiduria a success. Show your appreciation by giving them your patronage at all times.





Missouri Valley College

by its
President, Faculty and Trustees

Offers to the Class of 1934 its sincere congratulations on the completion of their college work, and wishes them success in their life plans:

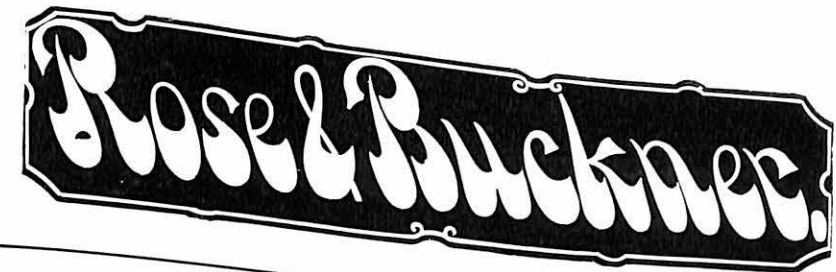
Says goodbye till next September to a student body of which it is justly proud; and

Welcomes to its halls and campus the graduates of high schools as freshmen, to become the Class of 1938.

SHOES AND CLOTHING

FOR FORTY-FOUR YEARS—FIRST IN QUALITY
AND IN SERVICE

"All the New Things First"



**The Democrat
News
Printing Company**

Appreciates the patronage it has had the last year from Missouri Valley College and its students. This company stands ready at all times to serve the college and its students in whatever capacity its assistance may be sought.

R. N. HAINS, *President*
G. T. DUGGINS, *Secretary*

MARSHALL - MISSOURI



ICE CREAM SHERBETS
PURE, FRESH, HOME-
MADE CANDIES



We Are Exclusive Agents

of

MRS. STOVER'S BUNGALOW
CANDIES

YOUR PATRONAGE
IS
APPRECIATED
GEO. R. SCOVERN
PRESCRIPTION DRUGGIST
S. W. Side Square

COMPLIMENTS
of
Eddie Hansbrough

Richman's
STYLE SHOP

East Side Square
Phone 251
Marshall, Missouri

For
SCHOOL SUPPLIES
GREETING CARDS
and GIFTS
All Roads Lead to

↓

FISHER'S
FISHER'S BOOK & PTG. CO.
North Side Square
Phone 13

SHIP VIA
BROOKS TRUCK LINES
MARSHALL PHONE 423

Kansas City Depot---
BROOKS TRUCK CO.
1319 St. Louis Ave.
Phone Harrison 0500

St. Louis Depot---
MOTOR FREIGHT
TERMINALS. Corp.
732 So. 7th St.
Phone Central 0441

Free Pick-Up

VAN DYKE & CO.
LOANS - INSURANCE
ABSTRACTS
DEPENDABLE
INSURANCE and INVESTMENT
SERVICE
Telephone 123

**The Hansbro
Confectionery**
We Appreciate the College
Patronage

WE DELIVER
North Side Square Phone 1440

**LA CROSSE LUMBER
COMPANY**
Since 1880
We are pleased to have done
our part in building up this
community.
Phone 7
MARSHALL - MISSOURI

EWELL'S, Inc.
"Fone for Food"
GROCERIES, MEATS
FRUITS, VEGETABLES
FREE DELIVERY
Phone 63--64 East Side Square

BEAUTY NOW—

Permanence in Later Years Assured for Your Beckett Bound Book
As the years pass, the contents of your annual will become more and more
priceless. Bound as it is in a Beckett Cover, this edition with ordinary
care will last more than a lifetime.

The distinction and charm of genuine craftsmanship possessed by all Beck-
told Covers is well exemplified in this 1934 Sabiduria.

BECKETT COMPANY
200-212 Pine Street St. Louis, Mo.

PACKAGE CANDY
WHITMAN - LIGGETT

RED CROSS PHARMACY

G. C. WATERS, *Proprietor*

The REXALL Store

KODAKS, PRESCRIPTIONS,
SODA WATER, AMATEUR
FILM DEVELOPING

PHONE 250
MARSHALL, MISSOURI

Cooper Clothing Co.

M. Sterns & Company
Clothing

W. L. Douglas Shoes
East Side of Square

MARSHALL, MISSOURI

Eat At

CALL'S CAFE

BECAUSE

They Serve the Best Meals, Short
Orders and Sandwiches in Town.

Telephone 284

Fuller's Cash Store

Drygoods, Ready-to-Wear
and Millinery

WE SELL

Humming Bird Hose
Gossard Corsets
Betty Rose Coats
Charlotte Dresses
Billy Daw Coats

Hershberger & Sons

R. C. A. - Victor Radios
Norge Refrigerators

Hardware and Sporting
Goods

East Side Square

Phone 122

MILK in ABUNDANCE
PROMOTES PERFECT

HEALTH

- - U S E - -

Al's Milk Bread for Health

and Prosperity

Marshall Baking Co.

COLVERT BROS.

Old Ben. Purity, Red Label,
and Higginsville Coal

TRUCK HAULING

Office Phone 89 Yard Phone 76

104 E. Arrow, First Door East of
Farmers Savings Bank

Phone 375 for Examinations of the Eye.

Dr. R. L. Searfoss

Optometrist

Marshall - - - Missouri

Miller Electric Co.

Everything Electrical

108 East Arrow - - Phone 1456

L. N. Miller, E. E., *Manager*

COMPLIMENTS OF

SHADY LAWN DAIRY

W. J. Baker

Phone - - - - 14F11

BOULWARE

Quality Cleaners
Telephone 302

115 E. Arrow Street
MARSHALL - MISSOURI

SHRYACK-WRIGHT

Grocery Company
WHOLESALE GROCERIES and
NOTIONS
Phone 23

Marshall, Missouri

A. T. SWISHER

Insurance, Loans, Abstracts
Fidelity Bond

Phone 608

FROM A FRIEND

GRIDDLE

Your Patronage Pleases Us and it
is a Pleasure to Please You.

GIVE US A TRIAL

Freemont & Wallace

H. M. BUCK IMPLEMENT COMPANY

FARM MACHINERY, HARNESS
WIRE FENCE

MARSHALL, MISSOURI

OFFICE PHONE 448

RESIDENCE PHONE 527

A. C. PUTNAM, M.D.

Homeopath

EDDIE'S HAMBURGER INN

LUNCHES, SANDWICHES,
CHILI and GOOD-COFFEE

....CURB SERVICE....

One Block West of Square on North St.
MARSHALL, MISSOURI

E. M. WRIGHT

Dry Goods

East Side Square

MARSHALL, MISSOURI

MARSHALL FLORAL COMPANY

Say It With Flowers

ALPHA CAFE

"Good Things to Eat
and Drink"

BACON & TONY
South Side of Square

Wm. S. Laurie

DRUG & TOILET
ARTICLES

Phone 4

Northwest Corner Square

G. E. REFRIGERATORS
PHILCO RADIOS
MAYTAG WASHERS

Radio and Electrical Work
A Specialty

Wenzel & Jackson

**Marshall Ice & Fuel
Company**

Mark Twain and Sahara

COALS

Telephone 31

"Dealers in Temperature"

J. W. McCHESNEY

PHOTOGRAPHER



PHOTOGRAPHS
LIVE FOREVER

**MARSHALL
DRY GOODS
CO.**

MARSHALL'S
GREATEST FASHION
HOUSE

East Side Square
MARSHALL, MISSOURI

*The NEW
FORD V-8*

*for
1 9 3 4*

*The Car Without a Price
Class*

W. P. THOMAS MOTOR CO.
MARSHALL, MISSOURI

MAUD S

The Flour That Satisfies

**REA and PAGE
MILLING CO.**

MARSHALL - MISSOURI

**TEACHENOR
BARTBERGER
ENGRAVING
COMPANY**

Photo Engravers
Artists
and Makers of Fine
Printing Plates

S. E. COR. SEVENTH & CENTRAL STS.
Kansas City, Mo.

School Annuals and High Grade
Catalogue Work are Our Specialty

□

With the Most Modern Equipment in every department of our plant we offer discriminating buyers an opportunity to secure High Grade School Annuals and Catalogues at moderate prices and with an unsurpassed personal interest and service for every job.

Specialization insures a better product with assured economy—that's why we specialize, and are equipped for this class of printing.

Dozens of schools in four states are numbered among our customers for school annuals.

•

PRINTING DEPARTMENT OF

~The Carpenter Press~

Oswego, Kansas

Autographs