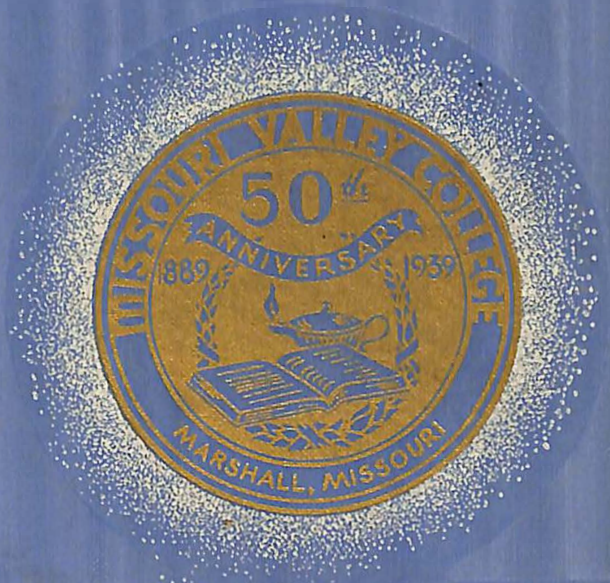


MISSOURI VALLEY COLLEGE



3 7010 00261329 3



*Jubilee* SABIDURIA

# THE 1939 SABIDURIA

Marje Moore Sweeney, Editor

Wallace Wingfield, Business Manager

## ENGRAVER

Holland Engraving Company  
Kansas City, Missouri

..

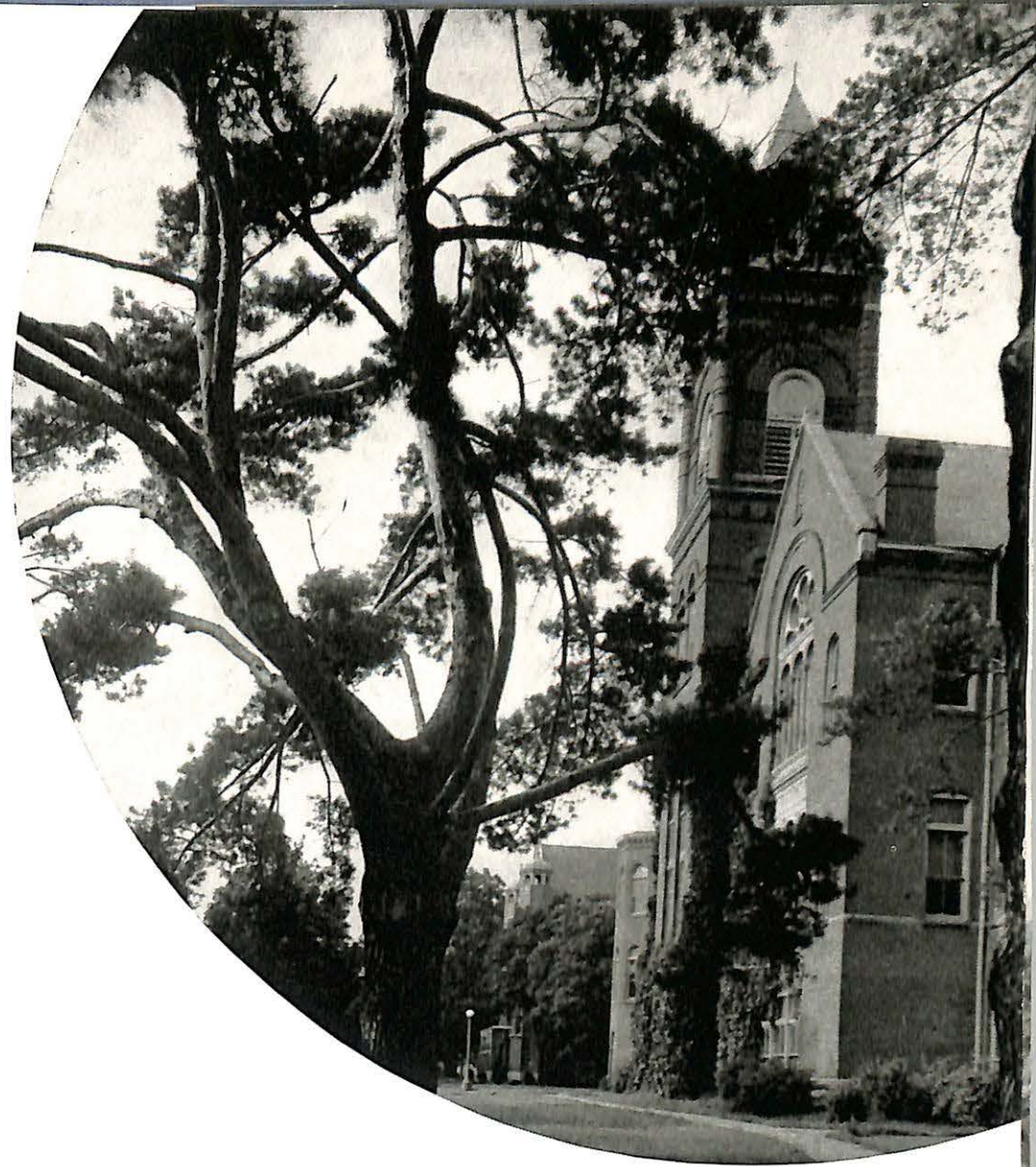
## PRINTER

Lambert Moon Printing Company  
Independence, Missouri

..

## PHOTOGRAPHERS

Jack McChesney  
Percy S. Johnson  
David Eisenstein



1889  
1939

Commemorating the Fiftieth Anniversary of the Founding of Missouri Valley College



THE STUDENT BODY OF 1939 PRESENTS THIS THE



*Jubilee* **SABIDURIA**



Dedicated to Mrs. Helen Burton Whose Loyal Viking Spirit Has

Helped to Make Missouri Valley College What It Is Today



Campus

Classes

Events

Personalities

Organizations

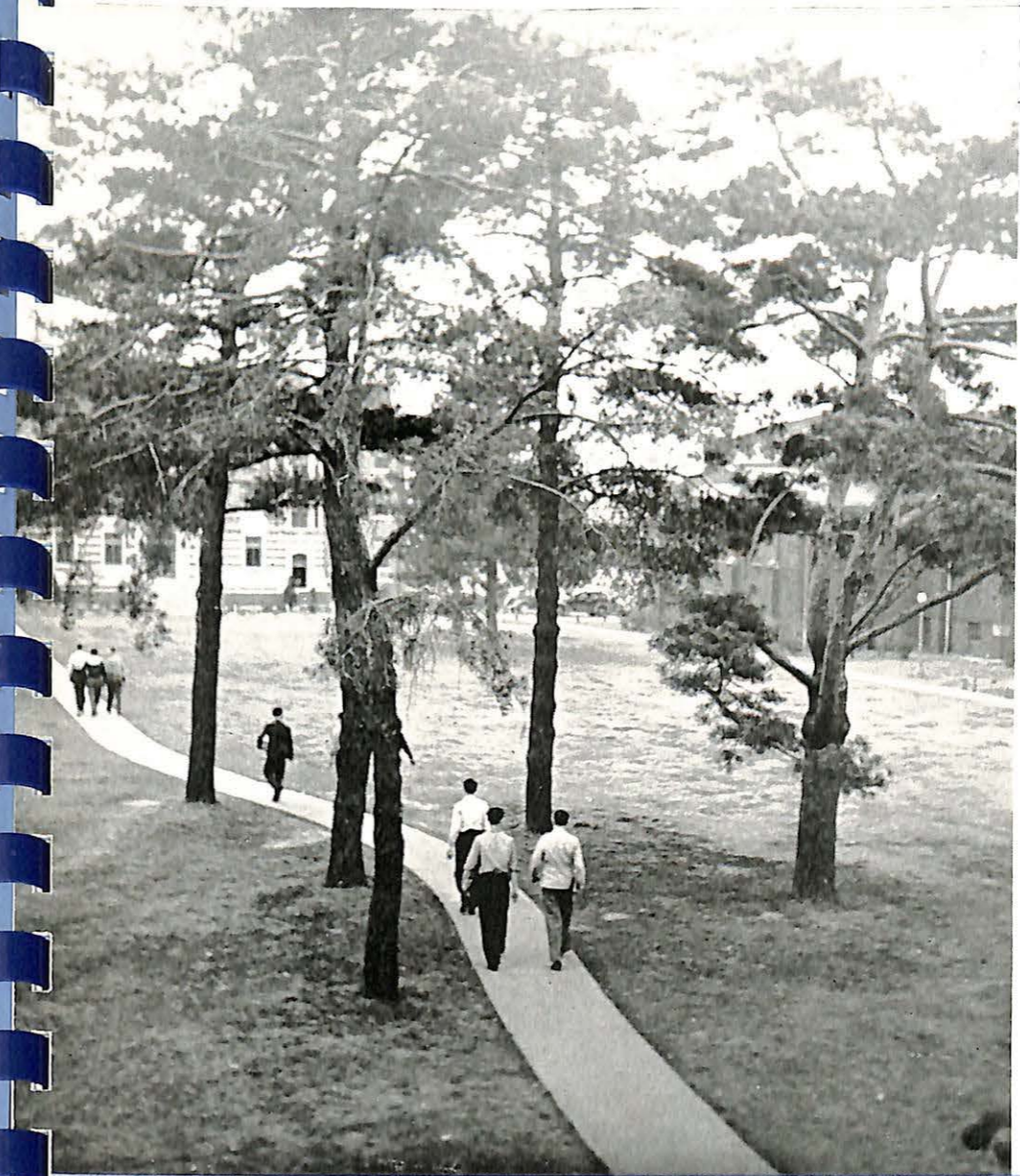
Sports



*Fifty Years a School*  
*Fifty Years in Activities*  
*Fifty Years in Athletics*  
*Jubilee Features*

# The 50th year a COLLEGE

ALTHOUGH Valley is fifty this year, she progresses with the times. We want you to meet our new President, our Deans, and we will even let you see some of the things we are likely to be doing any time you drop in.



Class Is Out!



*Dr. Thomas W. Bibb*

WE wish to welcome and honor our new president, Dr. Bibb, whose level-headed and progressive policies have already endeared him to the student body of the school.

MISSOURI VALLEY COLLEGE has just completed one half century of its history. Coeducational and Christian at the time of its founding, it has never deviated from that great plan of its founders. It is still coeducational and Christian.

But as the college enters the second one half century of its existence, we are planning to make it a still greater and more efficient Missouri Valley.

We expect there shall go out of the halls of this institution both men and women who have acquired the practical habit of thinking with the poise that cultural learning begets, be physically and mentally sound, and spiritually elevated toward the highest idealism with a living faith in God. In brief, that they be fully educated men and women.

THOMAS W. BIBB, President.



*Earl L. Pettijohn*

DEAN OF MEN

There are many excellent features of our college that are deserving of high praise. Most noteworthy among them is our deeply loyal, highly cooperative student body. May I offer the students my congratulations.

EARL PETTIJOHN.

I am happy to have this opportunity to thank the leaders of many of our campus organizations for their splendid cooperation this year. The spade-work is done for those who follow. We accordingly look forward to new ideas and greater success next year.

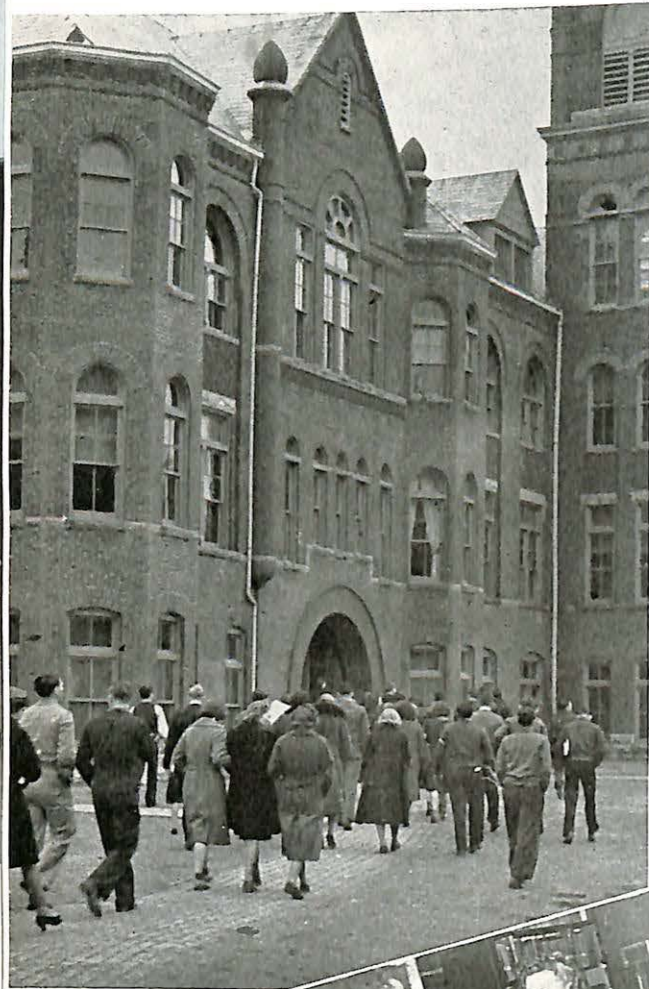
HELEN B. BURTON.

*Helen B. Burton*

DEAN OF WOMEN



# We Work



This is the way we go to school, go to school, go to— Oh, let's not go today— let's cut!

These are good students on the left—they went to class.

But we were bad and didn't go, and now we have a big assignment for Mrs. Huff, and we have to goop it up in the Lib.



# and Then

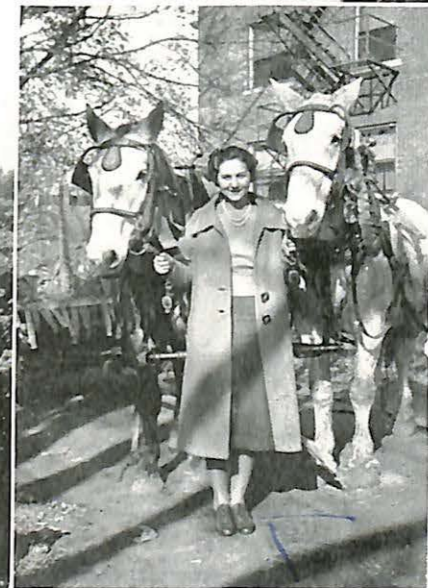


To your right is an object lesson. It shows what happens to cats who leave home.

The school bus looks a little tipsy, but it was celebrating the Tarkio victory, too.

"The Jones Family Down on the Farm."

At the bottom of the page we see a Senior meditating. It is Virgil Leimkeuhler. Like all good Seniors, he is wondering what he will do if he graduates.



*This here is your hoisey play Jan when loves ya.*



*We Play*



Helen feels exalted



Mr. Barrett and Bobby Soper struggle for art

*and Play - -*

Finsilver and females . . .

The Dentyne twins—Jian and Jimmy.

Dr. Bibb was a Freshman, too.

Light and shadows—MacChesney and Stahl.

Study desk?

McClure says Nooooo . . .

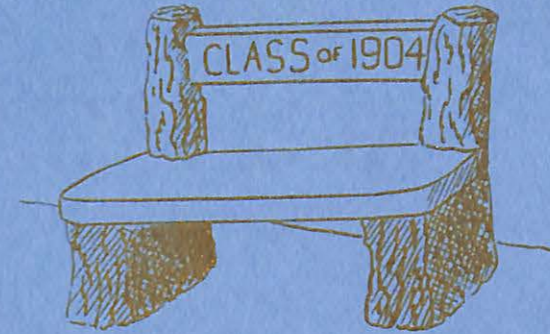
But it doesn't do any good.



## and Then We Loaf

Junior, Mac, Gene, and Cundiff take it easy; this is not an unusual sight. A visitor entering the Rec room at Young Hall will often be greeted by just such a picture.

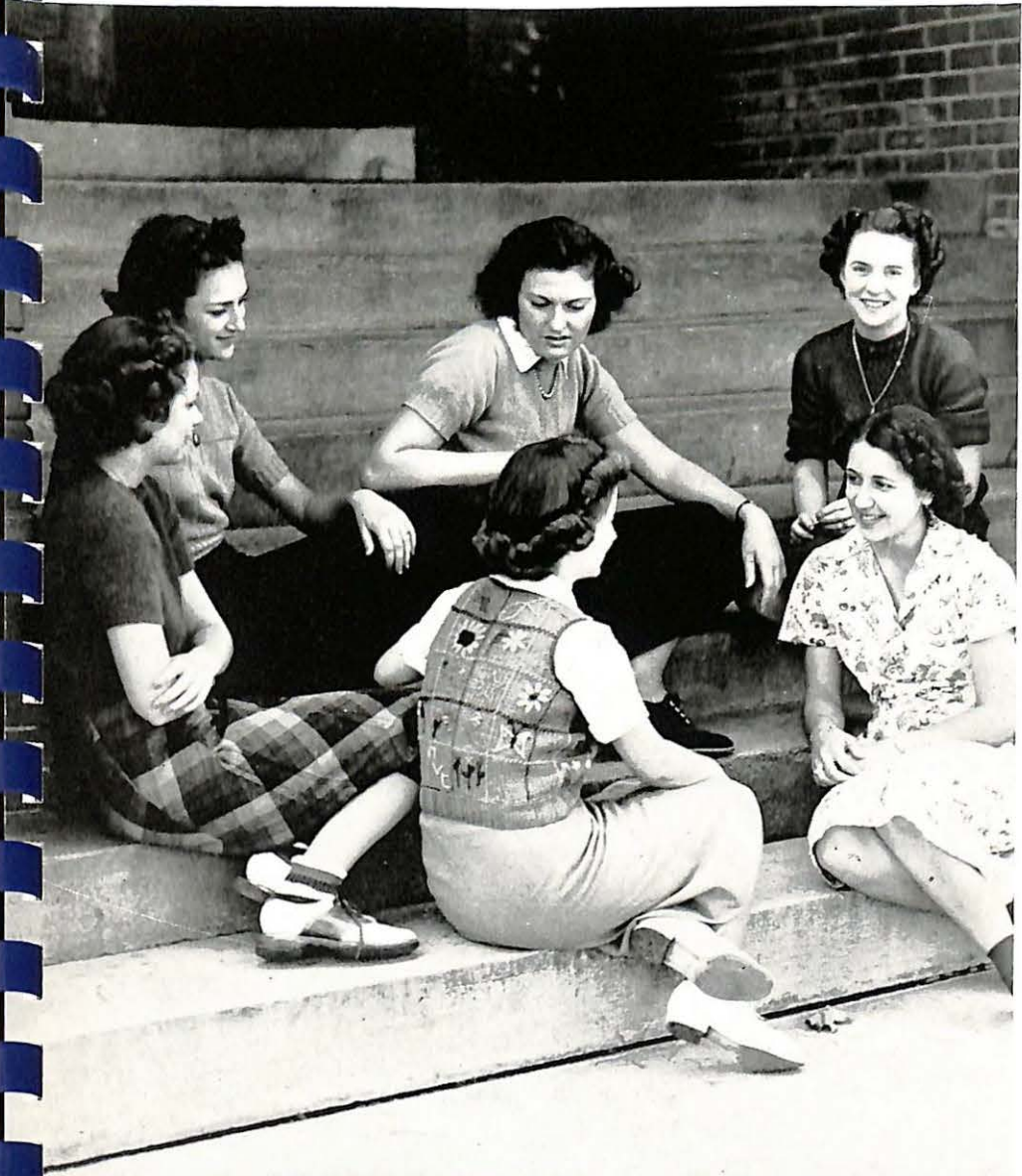
The Misses Dexter, Pritchard, and Dickerson display Campbell Hall to good advantage. Note the tidy room; this is not impossible, but is met with less frequently than the above situation.



**M**UCH of Valley's history and many of its traditions may be traced by the "landmarks" on the campus. One of the oldest and most familiar of these is the stone bench in front of Campbell Hall. It has been used by countless couples for "jellying" before, after, and during classes.

# The 50th ROLL CALL

HERE is Valley's fiftieth crop of students, all the way from Seniors to Freshmen (with the Faculty thrown in for extra measure). This student body, although possibly not the most studious group to assemble within these walls, is one of the liveliest ever assembled.



Cutting Class?

# FACULTY

*Best wishes to a  
perfectly grand girl!  
Mrs. L. L. Gray.*

VOLNEY C. ASHFORD, Ph.B.  
Physical Education  
Director of Athletics

MRS. PEARL M. CARDY, A.B.  
Director of Birchhead  
English

VIRGINIA MACDONALD, A.B.  
Librarian

EMMETT L. PARSONS, Ph.B.  
College Treasurer

DR. JOHN M. RAINES, Ph.D.  
English

MRS. PAULINE VAN E. GRAY, A.B.  
Commercial Subjects

CLAUDE L. FITCHTHORN, M.A.  
Music

DR. WILLIAM W. MALCOLM, Ph.D.  
Philosophy and Religion



*I'm looking  
forward to see  
you with you*

WILLIAM I. FERGUSON, M.A.  
Mathematics  
*Kveta Vondracek*  
KVETA VONDRACEK, A.B.  
Physical Education  
Dramatics and Speech

HELEN BUZAN, R.N.,  
College Nurse

DWIGHT M. PASEK, M.S.  
Physics

GILBERT H. HOLLOWAY, A.B.  
Assistant to Treasurer

REBECCA KNOWLTON, A.B.  
Secretary to President

EARL L. KELLEY, B.S., M.A.  
Economics  
Business Administration

WILLIAM ROY MITCHELL, Ph.D.  
College Registrar

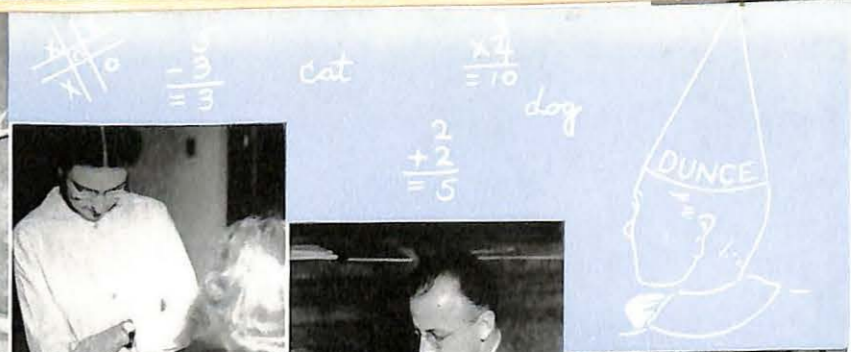
# FACULTY

☆ teeth  
☆ hands  
☆ finger nails

$\frac{6}{+3}$   
 $=9$  rat

$12 \div 4 = 3$

h h h h h



# FACULTY

PERCY L. JOHNSON, Ph.D.  
Biological Science

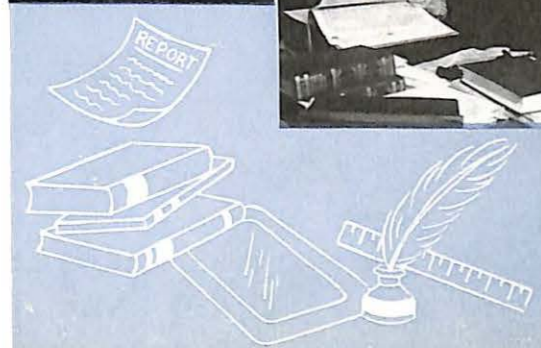
JOHN H. HARTSOOK, A.B.  
Foreign Languages

MRS. MARGARET M. McANINCH, A.B.  
English

MRS. BELLE CAMPBELL HUFF, A.B., Litt.D.  
History and Literature

JOSEPH E. JOHNSTON, A.B., B.D.  
Field Secretary

RICHARD M. WARNOCK, M.S.  
Chemistry



*Margaret M. McAninch*

*With love & best wishes - B.C.H.*

*Dorothy Bell: You have done your work well. May success be yours always. Love, Minnie Kopf.*

MINNIE KOPF, M.A.  
Dietitian  
Home Economics

STEPHEN L. BARRETT, Mus.B.  
Music

GRACE THOMAS, Ph.D.  
English

*Grace Thomas*

# SENIOR SKETCHES

**S**EVEN score and four weeks ago a class of about a hundred Freshmen, no more nor less wide-eyed and innocent than the usual run of young college neophytes, entered onto the forty acres known as Missouri Valley College, and into the spirit which has given Valley much of its individuality. These erstwhile Freshmen, now grown to Senior's estate, have developed individuality also, and, in case you don't know all of them, here are some very sketchy sketches.

We'll put DOTTY ARMSTRONG at the head of the list. That's where she belongs.

MAY AUGUSTA BILLMAN turned down an English major for a Biology major.

ROLLIN GODFREY—bland like Miracle Whip, big like Gibraltar.  
CHRISTIAN STIPP looks like Ben Blue—but Ben Blue's funny.

HELEN TARVER—look in the View Book if you want to see what she's really like.

GLADYS HAYNES—Dr. Haynes is the luckiest man.  
BILL CAYOT wears clothes and has clothes to wear.

O. H. WILLIAMS held down several jobs and still doesn't have any gray hairs or wrinkles.

JOAN STEWART—is she really like she is?  
JONES BEULAH, JONES BUSTER, JONES J. W. We had about ten Joneses when we were Freshman. Where, O where are the Joneses?

The old saying, "Worth his weight in gold," means a lot when you've got BARNEY LaSAUCE.

GENEVIEVE EVANS—a redhead without a temper?  
Little LEVA LASH has been a good girl for four years. Missouri Valley will certainly miss her.

GLADE HELZER—whatever will he do now that he is no longer the assistant to the assistant? He'll probably go out and get a bank to be president of.

GLADYS PAXTON—the Sigma Phi's acquired a good girl when they pledged her.

VIRGIL LEIMKUEHLER—has subjected himself to four years of culture in order to become a gentleman farmer.

GEORGE EMMERSON—a good trackman, a dandy fellow.  
VIRGINIA "TINY" VOGEL—about one hundred pounds of unadulterated dynamite, with plenty of common sense.

PAUL TODD—"that good boy" with the honest face and trusting heart. After surviving Mrs. Huff, Paul expects to live indefinitely.

MARJE MOORE SWEENEY—She was O. K. until what with the "Sab" and all, she just . . .

JOHN ROBB—has finally begun to express himself, and has something to express after all.

DOROTHY LAKE—This is Dorothy's first year at Valley, but she has certainly made it count.

GLENWOOD GREEN—His pals called him "Dagwood," but where were Blondie and Baby Dumplin'?

# SENIOR SKETCHES

*Betty is a "sister" and best wishes to a small girl. This is you being congratulated to a small girl.*

**R**OY BUNTIN—We've never heard anybody say they didn't like "Bull," and that is about as high praise as anybody can rate on this campus.

**RUTH DICKERSON**—"Ruthie Lou," one of the veterans at Campbell, has always been able to get good grades and take part in many activities. We imagine she has unplumbed depths.

**REINHOLD JENSEN**—"Reinie" has improved as much as anybody we know during his four years here. He's been doing Valley good service on the Choir trips.

**RAYMOND HAYOB**—"Ray" is one of these quiet fellows that doesn't make a lot of stir, but gets things done anyway.

**ELEANOR AND CHARLES ROY FIELDS**—"Little Pie" and "Buddy" are two of our little rascals. They've both been with us four years and have been swell all the way.

**JOYCE JOHNSTON**—Joyce is nice to be around and nice to look at. She's one of our girl athletes, but retains all the feminine prerogatives.

**JAMES SUTTON**—Jimmie has begun to grow up, and before long we're pretty sure we will have caught up with his brain.

**BYRON MUELLER**—Byron is one nice guy. He's not self-assertive, but we imagine he can hold up for himself very adequately.

**LEE OLIVE PRITCHARD**—"Lolly" has crowded four year's work into three, and has given time to athletics, dramatics, and umpteen other activities, keeping her grand disposition at the same time.

**LARRY LANE**—He of the many talents and nicknames. Larry is a rank individualist, a swell tenor, a clever poet, and in a class all by himself.

**OLIVE DICKSON**—"Sticky" has an air of authority, but you don't mind, somehow. We admire the way she says what she wants said.

**MARY LETTA SEARFOSS**—has a nice singing voice and more clothes! We've always liked the way she gave the kids rides in her car.

**JANET MITCHELL**—Janet has blossomed out since she's been in school, and has done real service in dramatics and in the music department. Besides, she's a very entertaining person.

**EDWIN MCKENZIE**—We know a secret, but we won't tell! Mac has been an athlete, stage manager, and an all 'round good fellow ever since we've known him.

**NORRIS PATTERSON**—"Pat" has done a world of things at Valley, and among them, put Odessa on the map. We can't find anything but complimentary things to say about him.

**WOODROW GABA**—Gaba has proved that good looking fellows aren't necessarily sissy. He's easy on the eyes, but on a football field . . . !

Well, there are the Seniors. If everybody likes them as much as we do, they won't have any trouble getting along in the world.

# SENIORS

**CHRISTIAN FREDERICK STIPP, A.B., Carrollton**  
Westminster College 1; Sigma Nu 2, 3, 4, Lt. Comm. 4; Class Pres. 3, 4; M. S. G. A. Vice Pres. 3; Delta Assoc. Ed. 3, Editor 4; Mo. College Newspaper Assn., Sec. 3, Treas. 4; Debate 2, 3; Pi Kappa Delta 3, 4, Vice Pres. 4; D. A. C. 2, 3, 4, Pres. 3, 4; Pi Gamma Mu 4; Asst. in Economics 4; Baseball 3, 4; Valkyr Carnival Queen 4.

**PAUL HILLS TODD, A.B., 1216 East 41st, Kansas City, Mo.**  
Co-founder College Club, 4; Sec. Treas. Senior Class, 4; Sec. Y. M. C. A. 4; Delta 3, 4; Publicity Mgr. of College 3, 4; Chapel Choir 3, 4; D. A. C. 3, 4; "The Curtain Rises" 3.

**BYRON MUELLER, A.B., Sweet Springs**  
Honor Roll, two sem.; Student Senate 4; Class Vice Pres. 4; Y. M. C. A. 2, 3, 4, Vice Pres. 2, 3, Pres. 4; Chapel Choir 3, 4; Asst. in Math. 4; Alpha Delta Kappa 4; Intramural Sports 1, 2, 3, 4.

**HELEN JOAN STEWART, A.B., 2005 East 36th, Kansas City**  
Honor Roll, six sem.; Valkyr 1, 2, 3, 4; Campbell House Pres. 3; Y. W. C. A. 1, 2, 3, 4, Pres. 4; Chapel Choir 2, 3, 4; Student Who's Who 3, 4.

**JOHN ROBB, A.B., Longwood**  
College Club, 4; Y. M. C. A. 2, 3, 4, Cabinet 3, 4; Track 1, 2; D. A. C. 2, 3, 4, Electrician 3, 4; Physics Lab. Asst. 3, 4; "I'll Leave It to You" 4; "Everyman" 4.

**ROLLIN EDWARDS GODFREY, A.B., Sedalia**  
Orchestra 1, 2, 3, 4; Band 1, 2, 3, 4; Chapel Choir, 1, 2, 3, 4; Y. M. C. A. 1, 2, 4; D. A. C. 2, 3, 4; Young Hall Council 4.

**MAY AUGUSTA BILLMANN, A.B., Slater**  
Y. W. C. A. 2, 3, 4, Cabinet 2, 4; W. A. A. 2, 3, 4; Beta Beta Beta 2, 3; D. A. C. 2, 3, 4; Chapel Choir 1, 4.

**GENEVEIVE EVANS, A.B., Carthage**  
Honor Roll, five sem.; Sigma Phi 1, 2, 3, Sec. 2, Treas. 3; Y. W. C. A. 1, 2, 3, 4, Pres. 2, Vice Pres. 3; Chapel Choir 1, 2, 3, 4; "Bartered Bride" 2, "Hansel and Gretel" 3, "Sister Angelica" 4; Asst. in Music, 4; Student Who's Who 3, 4.

**GLENNWOOD GREEN, A.B., Armstrong**  
Central College 1, 2; Alpha Delta Kappa 3, 4.

**RUTH ELIZABETH DICKERSON, A.B., Armstrong**  
Honor Roll, two sem.; Campbell House Council 3, 4; Y. W. C. A. 1, 2, 4; W. A. A. 1, 2; Beta Beta Beta 3, 4, Sec. 4; Asst. in Biology 4; Pi Gamma Mu 4.

**FRANCIS HENDERSON, A.B., Louisiana**  
Honor Roll, three sem.; Y. M. C. A. 1, 2, 3, 4; Chi Alpha 1, 2, 3, 4, Local Chaplain 3, 4, Grand Chaplain 4; Asst. in Religious Educ. 3, 4; Chapel Choir 1, 2, 3, 4; Band 2; D. A. C. 2, 3, 4; Pi Gamma Mu 4.

**EDWIN EUGENE MCKENZIE, A.B., Brookfield**  
College Club 4; D. A. C., stage manager 3, 4; Football 1, 2, 3, 4; Track 1, 2, 3, 4; Basketball 1, 2.





Dear Betty - We've struggled thru World War II & a couple of other classes together, we've had some good times and I've certainly enjoyed knowing you. May you always be happy, sunny & beautiful.

WILLIAM CAYOZ, A.B., 2841 Tracy, Kansas City  
K. U. 2; Sigma Nu 1, 3, 4, Reporter 4; D. A. C. 1, 3, 4, Award 3, Vice Pres. 4; "A Doll's House" 1, "Moor Born" 3, "I'll Leave It to You" 4, "Children of the Moon" 4.



EULAH JONES, A.B., Marshall  
Honor Roll 4; Valkyr 1, 2, 3, 4, Sec. 4; W. A. A. 2, 3, 4, Treas. 2, Pres. 3; D. A. C. 1, 2, 3, 4; Sabiduria 2, 3, 4; Chapel Choir 1, 2, 3, 4; "Doll's House" 1, "As You Like It" 2, "Bartered Bride" 2, "Hansel and Gretel" 3, "Sister Angelica" 4, "Magic Fire" 4.

JAMES ELVIS SUTTON, A.B., Marshall  
Honor Roll, seven sem.; Beta Gamma Phi 4; Co-founder of College Club 4; Student Senate, Treas. 4; Debate 1, 2, 3, 4; Pi Kappa Delta 1, 2, 3, 4, Treas. 2, Pres. 3, 4; D. A. C. 3, 4; "Moor Born" 3, "Everyman" 4; Brandon Award 2; Delta 3; Sabiduria 3, 4; Pi Gamma Mu 3, 4, Vice Pres. 3, Pres. 4; Asst. in History 3, 4; Student Who's Who 3, 4.



NORRIS ALLEN PATTERSON, A.B., Odessa  
Student Senate 1, 2, 4; House Council 4; Football 1, 2, 3, 4, Capt. 4; Baseball 1, 2, 3, 4; Basketball 1, 2; "V" Club 1, 2, 3, 4, Treas. 3, Vice Pres. 4; Most Popular Boy 4.

JOYCE JOHNSTON, A.B., Marshall  
Three Year Student; Sigma Phi 1, 2, 3, Social Chrm. 2, 3; Y. W. C. A. 1, 2, 3, Cabinet 1, 2, 3; W. A. A. 1, 2, 3, Vice Pres. 3; Pi Gamma Mu 3; D. A. C. 3; May Fete 1, 2, 3.



DOROTHY ARMSTRONG, A.B., 5063 Chipewaw, St. Louis.  
Valkyr 1, 2, 3, 4, Treas. 3; W. S. G. A. Council 2, 3, 4; Class Queen 1, Harvest Queen 3; D. A. C. 2, 3, 4; "Moor Born" 3, "I'll Leave It to You" 4, "Children of the Moon" 4; W. A. A. 2, 3, 4, Pres. 4; Most Popular Girl 2, 3, 4; Miss Vondracek's Asst. 3, 4.

NARVEL LAWRENCE LANE, A.B., Marceline  
Honor Roll three sem.; College Club 4; Editor of Delta 3; Sabiduria 4; Pi Gamma Mu 4; Student Asst. 2, 3, 4; Chapel Choir 1, 2, 3, 4; D. A. C. 1, 2, 3, 4; "Bartered Bride" 2, "Hansel and Gretel" 3, "Magic Fire" 4; Student Who's Who 4.



GLADE D. HELZER, A.B., Barnard  
Honor Roll, four sem.; Sigma Nu 1, 2, 3, 4, Treas. 3, Commander 4; M. S. G. A. 2, 3, 4, Treas. 2, 3, Pres. 4; Student Senate, Treas. 3; Pi Gamma Mu 3, 4; Student Asst. 2, 3, 4; Student Who's Who 4.

LEVA MARIE LASH, A.B., Ottawa, Kansas  
Honor Roll, six sem.; Valkyr 1, 2, 3, 4, Sec. 2, Pres. 3; Student Senate 3, 4, Sec. 3, Vice Pres. 4; W. S. G. A. Vice Pres. 3, Pres. 4; Class Queen 4; Pi Gamma Mu 4; D. A. C. 2, 3, 4; "Whistling in the Dark" 2, "Moor Born" 3, "Children of the Moon" 4; Student Who's Who 3, 4.



ORLIN HARVEY WILLIAMS, A.B., Brookfield  
Honor Roll, one sem.; Alpha Delta Kappa 2, 3, 4, Pres. 4; Student Senate 2, 3, 4; Pres. of Student Body 4; Chemistry Club 2, 3, Pres. 3; Football 1, 2, 3, 4; Track 1, 2, 3, 4, Capt. 3, 4; "V" Club 1, 2, 3, 4.



MARJE M. SWEENEY, A.B., Marshall  
Honor Roll, five sem.; Co-founder College Club 4; Sabiduria 2, 3, 4, Assoc. Ed. 3, Editor 4; Pi Gamma Mu 3, 4; Pi Kappa Delta 1, 2, 3, 4, Sec. 3, Treas. 4; Debate 1, 2, State Jr. Col. Champion 2; Oratory 2; D. A. C. 1, 2, 3, 4, Productions 2, 3, 4.

SENIORS



DOROTHY LAKE, A.B., 409 E. Armour, Kansas City  
Kansas City Jr. College 1, 2; Teachers' College 3; Valkyr 4; W. A. A. 4; Cabinet 4.



ELEANOR FIELDS, A.B., Osceola  
Sigma Phi 1, 2, 3, 4, Vice Pres. 3; Class Queen 2; Chapel Choir 1, 2, 3, 4; Band 1; Sec.-Treas. of Campbell Hall 4.

CHARLES ROY FIELDS, A.B., Osceola  
Sigma Nu 1, 2, 3, 4, Social Chrm. 4; Chapel Choir 1, 2; Band 1, 2.



ROY F. BUNTIN, Bogard  
House Council of Young Hall 4; Football 2, 3, 4, Capt. 4; Basketball 2, 3, 4, Capt. 4; Baseball 1, 2, 3, 4; "V" Club 1, 2, 3, 4, Vice Pres. 3, Pres. 4.

JANET ELIZABETH MITCHELL, A.B., Marshall  
Valkyr 1, 2, 3, 4, Vice Pres. 3; Y. W. C. A. 1, 2, 3, 4, Cabinet 2, 3; W. A. A. 2, 3, 4, Treas. 3, 4; Chapel Choir 2, 3, 4; D. A. C. 4; "Sister Angelica" 4; May Fete 2, 4.



MARY LETTA SEARFOOSS, A.B., Marshall  
College Club 4; Y. W. C. A. 3, 4; Chapel Choir 2.

REINHOLD M. JENSEN, A.B., Lexington  
College Club 4; Chapel Choir 1, 2, 3, 4; Orchestra 1, 2, 3, 4; Band 1, 2; Beta Beta Beta 3, 4; Chi Alpha 1, 2, 3, 4; Deacon 2, 3; Pi Kappa Delta 2, 3, 4; Debate 1, 2; D. A. C. 3, 4; Y. M. C. A. 1, 2, 3, 4, Cabinet 2, 3, 4.



VIRGIL LEIMKUEHLER, A.B., Marshall  
College Club; Y. M. C. A. 4.

OLIVE DICKSON, A.B., Ottawa, Kansas  
Ottawa Univ. 1; Valkyr 2, 3, 4, Pres. 4; Class Queen 3, May Queen 4; Orchestra 2, 3; Band 2; D. A. C. 2, 3, 4; "As You Like It" 2, "Moor Born" 3, "I'll Leave It to You" 4.



HELEN JUNE TARVER, A.B., Gillette, Wyo.  
College Club 4; Chapel Choir 1, 2, 3, 4; Orchestra 2, 3, 4; Y. W. C. A. 1, 2, 3; "Sister Angelica" 4; Senior Piano Recital 4; D. A. C. 4.

LEE OLIVE PRITCHARD, A.B., Memphis  
Three Year Student; Honor Roll, five sem.; College Club, Council 3; W. A. A. 1, 2, 3, Cabinet 2, 3; Y. W. C. A. 1, 2, 3, Vice Pres. 3; May Fete 2, 3; D. A. C. 2, 3; Pi Gamma Mu 3; Campbell House Council 3; Asst. in Phys. Educ. 3.



# JUNIORS



WALLACE WINGFIELD, Pres.

HELEN WALTON  
Marshall

EUGENE JENSEN  
Lexington

DOROTHY CONNELL  
Gallatin

CATHERINE VANCE  
Sedalia

ROY JONES  
Marshall

HAYDEE LEIMKUEHLER  
Marshall

DERRELL BRYAN  
Mooreville

BETTY CARTER  
St. Louis

MARTHA JANE GILLIAM  
Slater

DICK DEXTER  
Kansas City

MINNIE RHEA HOHLT  
Concordia

ROBERT THOMPSON  
Marshall

ELLA MARY JOHNSON  
Marshall



*Dick Dexter*



# JUNIORS

DOROTHY PHILLIPS  
Marshall

JAMES SILL  
Lexington

LOUISE CROPP  
Slater

ROBERTA SOPER  
Slater

EUGENE AULGUR  
Marshall

ELIZABETH JANE EVANS  
Springfield

ROBERT TEDLOCK  
Marshall

OLIVIA MARSHALL  
Richmond

FLORENCE HARTZELL  
Carrollton

RALPH HOLLERORTH  
Jefferson City

DOROTHY HOUSTON  
Malta Bend

URIAH RITCHEY  
Miami

HAZEL LEIMKUEHLER  
Marshall

*Dear Betty's,  
I don't suppose  
I ever forgot you be.  
You were certainly  
sweet to me. Lots of  
love,  
Jackie Phillips*

*Polly Mae,  
I am very glad to  
have had for a next door  
roomie. I bet I have  
seen if you when you are  
not giggling. How I made  
me like you a lot.  
Remember me?  
Sissy.*



# SOPHOMORES



TOMMY HALL  
Vice President  
Glasgow



JOHN LAMKIN  
President  
Marshall



BERTHA WEBER  
Marshall



BOYD LUDLOW  
Harrisonville



GLEN BERNING  
Norborne



RUTH CHAMBERS  
Riverside, Illinois



KATHERINE LUEHRMANN  
Lexington



RALPH DAVIS  
Napton



GAIL JORDAN  
Malta Bend



J. L. ATKINSON  
Corder



MARYN LEWIS  
Blackwater



JOHN FAUSER  
1201 Southern  
New York, New York

*Write.*



BROWDER RICHMOND  
Kansas City, Kansas



NANCY PILE  
Marshall



RICHARD LEE  
Ludlow



Dear Betty:  
It has been a grand time  
I am sorry I won't know you back  
next year; but I want you to  
know I think you are swell.  
I sincerely,  
Sobby.



EDITH GABA  
1516 Colorado  
Kansas City



ILENE CALDWELL  
Richland



JAMES BOYD  
Knobnoster



MAX LAFFOON  
4937 Wyoming  
Kansas City



PATRICIA PATTERSON  
Marshall



JOHN MILSTEAD  
West Plains



ELSIE MAE ABRAHAMS  
Hamilton



ROBERT MCGHEE  
1222 Olive  
Kansas City



HARRIET HOGE  
East St. Louis, Illinois



WILLIAM FICHTHORN  
Marshall



LUCILLE COAD  
Marshall

*Dear Betty,  
I'll always  
remember you  
as a W. O. S. girl  
and my  
sister-in-law  
but wishes,  
Tom*



THOMAS BIBB  
Marshall



HELEN F. RICH  
Marshall



ROBERT STEELE  
Kansas City



# SOPHOMORES



EDDIE NIEDERMEYER  
Levasy



DAVID EISENSTEIN  
Marshall



LUCILE PETTIJOHN  
Marshall



EMILY SCUDDER  
Marshall



JOHN MARSHALL  
6135 McGee  
Kansas City



LEONARD HARRIS  
Miami



MARY ANN McCHESNEY  
Marshall



MILDRED DAVIS  
Webster Groves



FLOYD TOWNER  
6001 East Twelfth  
Kansas City



EUDORA MINOR  
Marshall  
Clifton City



IMOGENE POTTER  
Clifton City



JAMES WILLIAMS  
Norborne



RAYMOND DIES  
Gilliam



# Those Whose Pictures are Not in the Sabiduria

## SENIORS:

George Clyde Emmerson, A.B.  
Charles Ewell, A.B.  
Woodrow Gaba, A.B.  
Mrs. Gladys Sarah Haynes, A.B.  
Raymond Edward Hayob, A.B.  
Buster Jones, A.B.  
John Wesley Jones, A.B.  
Bernard Alfred LaSauce, A.B.  
Gladys Paxton, A.B.  
Virginia Vogel, A.B.

## JUNIORS:

Howard William Bennett  
Jake McClellan Crick  
Henry Haken  
Hugh Hall  
Joseph Allen Henley  
Francis Marion McCall  
Daniel Black Miles  
Jack Reid Napton  
Cecil Claude Orear  
Margaret Jean Powell  
Norwood Read  
Edward C. Rose

## SOPHOMORES:

LaRue Jane Atwood  
Charles Bertram Blosser  
Reynold Bradley, Jr.  
Helen Jane Buzan  
Mary Annette Claycomb  
Robert Willis Cundiff  
Rheuben Earl Geest  
Malcolm Fredrick Gerhardt  
Laura Evelyn Harvey  
Elizabeth Ann Hunsley  
Richard James  
Bernard Lagelle Jeeter  
Melvin Frederick Lichte  
Harry Howard Loeffler  
Ray McDaniel  
John Andrew Mull  
Willard Paul Purcell  
Frank Seward Rittersbacher  
Eleanor Louise Sanbach  
Harold Schroeder  
Edward Shirley  
Jared Fletcher Skidmore  
Marion Carr Snider  
Joseph Scott Walker

## FRESHMEN:

Andrew Hitchcock Allbee  
Winton Harold Allen  
Frances Byrle Barron  
Kathleen Virginia Bethel

Dean Bosley  
Edward William Brandecker  
Charles Manker Bunce  
William Sprigg Buntin  
Milford Joe Burnett  
Edward John Chaloupka  
Nancy Carr Chiles  
Mabel Jean Crain  
Harold Raymond Crockett  
James Jewell Crockett  
Durwood Rucker Davis  
Freta Dick  
Edgar Bridges Ehrnman  
Charles Wesley Emmerson  
Shirley Lucile Featherstone  
Edward Harris Finsilver  
George Burns Fletcher  
James Burton Flynn  
Dora Catherine Foley  
Eugene Fullerton  
Mida Grinstead  
John Harold Hayob  
Jack Preston Hearn  
Robert James Hightower  
Paul Elmer Hoffman  
Steven Edward Holic  
George Ernest Holt  
Sam Hopkins  
John Husiak  
John Edwin Kerr  
Robert Irvine Kohn  
Spencer Park Lane  
John Pershing Libby  
William David Lockridge  
Dorothy Louise Lovercamp  
Roy Clinton Mallett  
James Franklin Martin  
John William Martin  
James Morgan Morrow  
Richard McLeod Pearse  
Patricia Alyce Peithman  
Salvador William Porto  
George Rainey Raupp  
Jack Raymond  
Grover Cleveland Redford  
Gerald Franklin Rottman  
Ruth Garner Rowan  
Edwin Richard Ruklic  
Dorothy Ellen Schrantz  
John Manning Sneed  
Henry William Spanbauer  
Jacqueline Betty Spencer  
William McClure Sprecher  
Harry McGovern Stahl  
Raymond William Stoenner  
Marion Sugg  
Betty VonUnwerth  
Clarence James Wilson

# FRESHMEN

MARY FRANCES LILLER  
Carrollton

DEVONIA SMITH  
Marshall

MAXINE EZELL  
Marshall

DOROTHY BROWN  
Marshall

ERNA LEE GRETZINGER  
Urich

JOE THOMPSON  
Slater

ZORENE BROWN  
Slater

JOHN R. JOHN  
Marshall

MARYLAND CALL  
Marshall

*Betty  
I have  
enjoyed knowing  
you especially  
the head-waitress  
in minutes  
hall. I wish  
you lots of love  
in the future and  
hope you all waiters  
together as in next year  
Mary Frances*

NEVA HARROLD  
Richland

L. H. EILERS  
Marshall

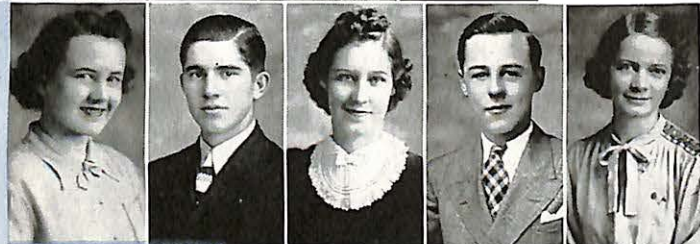
VIVIAN COX  
Chicago, Illinois

JOHN MINOR  
Marshall

MARGARET DEE HUSTON  
Deepwater

WILLARD HEATH  
Smithville

RUBY WEBER  
Marshall



*My Betty  
I'm really glad to have  
made your acquaintance here at  
college. I hope we get to know  
each other better in the future.  
Best wishes to you and yours.  
Willard Heath*

# FRESHMEN

CHERRY JANE HILL  
St. Louis

VERMILLION DEDITIUS  
St. Louis

JOSEPHINE COPELAND  
Slater

NANCY HILBURN  
El Paso, Texas

VIVIAN EARICKSON  
Glasgow

DON LOBER  
Weston

IRENE CHURCHFIELD  
Newcastle, Wyoming

FLOYD FLORA  
Weston

EMMA MARGRET BEACH  
Marshall

MARY EVANS  
Richland

GEORGE CANNING  
Lexington

MARGARET THOMPSON  
Liberty

KENNETH FRANKLIN  
Marshall

VIRGINIA SCHMIDTKE  
Mount Vernon

CLARENCE BARR  
Marshall

HELEN HOUCHEM  
Napton



# FRESHMEN

WOODROW WOOD  
President  
Marshall

JEAN DEXTER  
Secretary  
Kansas City

MILDRED HEYNEN  
Sedalia

MARY JANE HUGHES  
Kansas City

EOIS LEADBETTER  
Butler

BRYCE RAASH  
Higginsville

HELEN CROWDER  
Marshall

DEAN SWISHER  
Marshall

BERTHA GRUBER  
Lexington

MAXINE MILLER  
Macon

FRANK PELOT  
Marshall

BETTE BETTINGER  
Alhambra, California

WILLIAM SCHOFIELD  
Butler

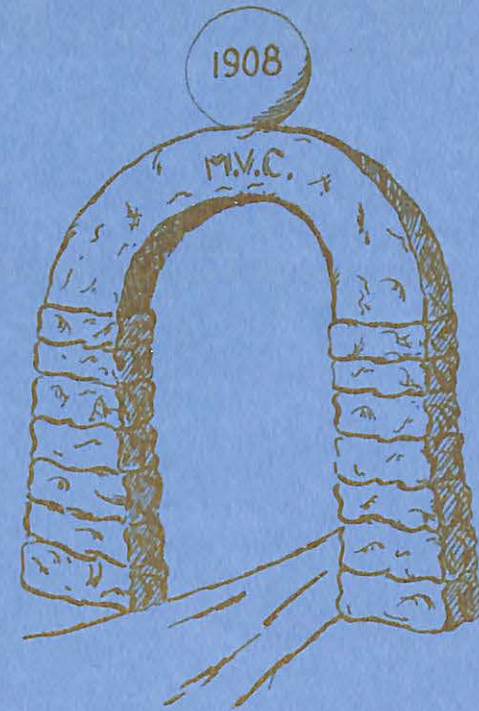
RUTH ALYSE RIGDON  
Marshall

RALPH LEE  
Gilliam

EVELYN RENSCHLER  
Clinton



*I am so well  
gal - Betty - this  
been fine knowing  
you best of luck  
always. You are  
looking and a well  
personality. Nice  
Bryce Raash*

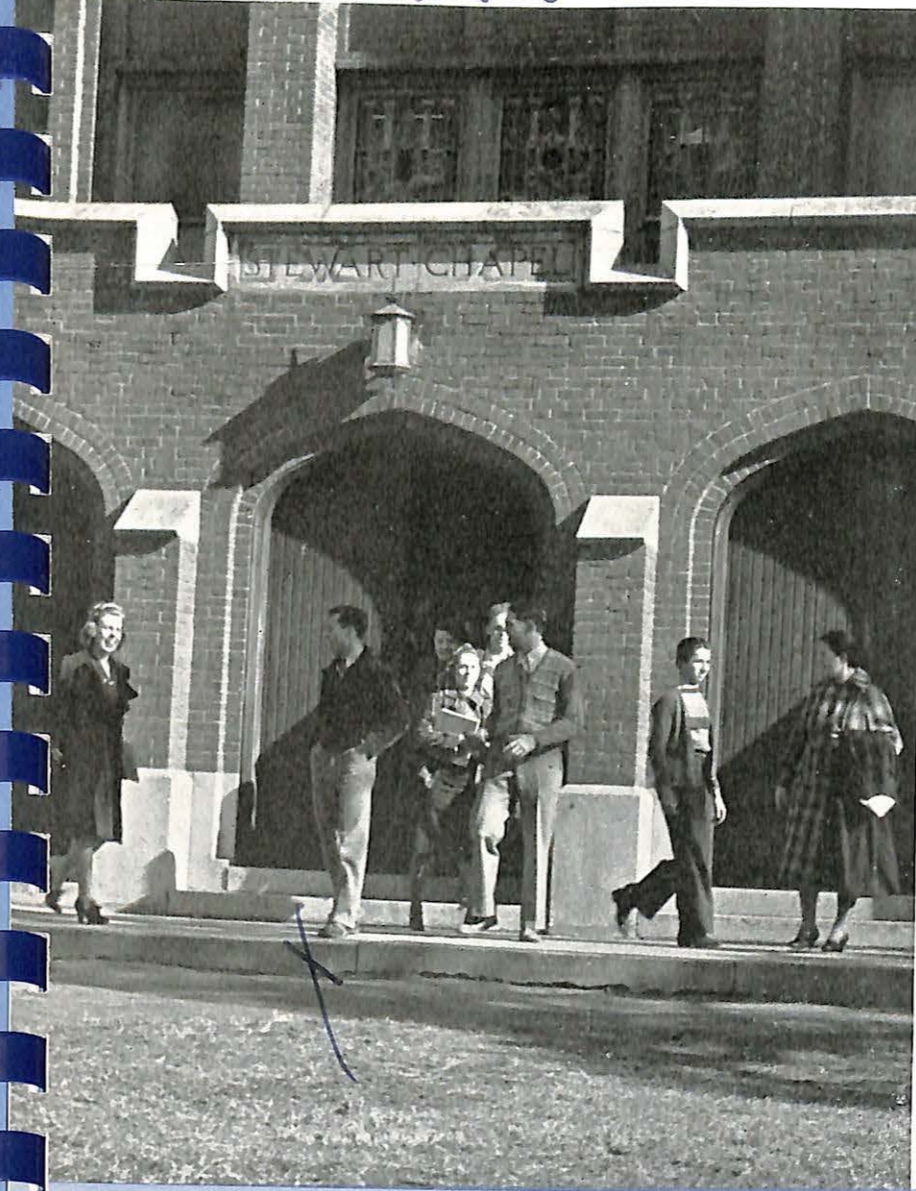


THE Class of 1908 gave to Valley the Northwest Archway which marks one of the boundaries of the campus. It has been scaled by daring members of the frosh—it has been painted by rival schools raiding the campus, and one boy boasts of driving a Model T through it. The archway has withstood all of these assaults and remains one of the campus standbys.

To Betty  
I'm really sorry  
you weren't in  
choir this year  
but that wasn't  
my fault. I'm  
sorry I didn't  
pick you for  
the choir. I  
hope you'll  
sing in choir  
next year.  
Love,  
George

# The 50th year in ACTIVITIES

HERE are some of the reasons we can't all be "A" students — extracurricular activities! We have a great many: Honorary, social, and scholastic, and most of our leaders seem to find time for several of them, and for their studies, too.



That Speaker Wasn't So Bad!

## STUDENT SENATE



### STUDENT PRESIDENT'S MESSAGE:

It has been a privilege and an honor to serve as president of the student body this year. I am deeply grateful to the members of the Student Senate for their fine cooperation and accomplishments this year, and for the award they gave me at the close of my term.

O. H. WILLIAMS.

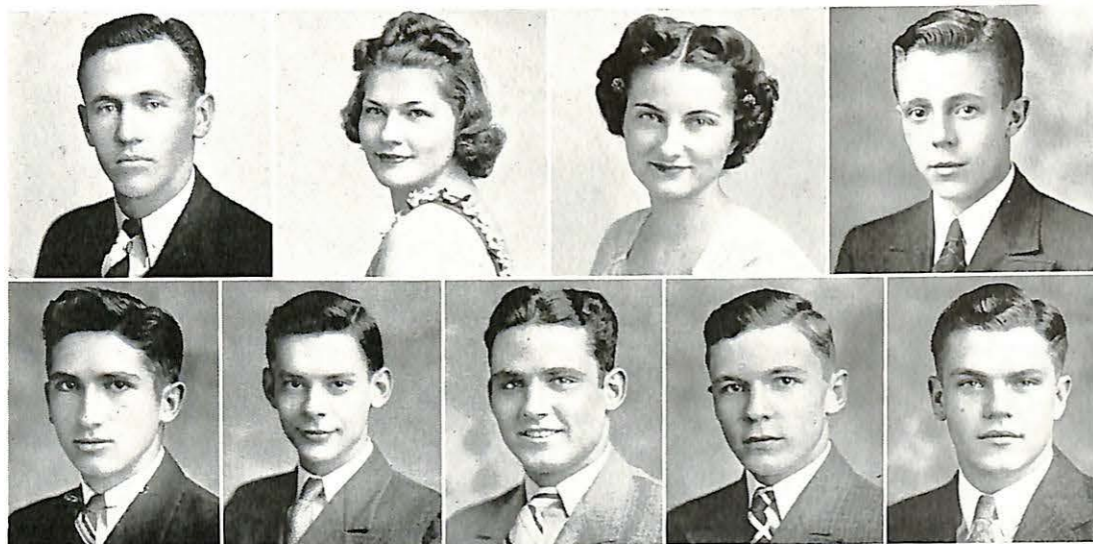
### THE STUDENT SENATE:

This year's Student Senate has been unusually active and progressive in making student government more effective on the campus. For the first time since its was created the Senate exercised the power of amending legislation it had previously adopted. All of the old Senate by-laws were revised and brought up to date.

Recognizing that the responsibility for fair student elections rests with it, the Senate adopted legislation creating nonpartisan election committees to supervise all class elections. In order to improve its organization and increase its efficiency, the Senate also adopted several by-laws on Senate procedure and duties of its officers.

The Student Senate this year chartered a new social organization, the College Club, thus extending its aid to an effort to establish a better balanced social program.

These progressive steps taken by the Student Senate have greatly strengthened student government on the campus.



OFFICERS: O. H. Williams, president; Leva Lash, vice president; Helen Walton, secretary; James Sutton, treasurer and parliamentarian.

## W. S. G. A.



Although it is an honor to be president of the Women's Student Government Association, it can be a very difficult and unpleasant position to fill, for the reason that no one likes to "tattle on" his fellows. I want to take this opportunity to thank all of you who by your splendid attitude and cooperation have made the office an honor rather than a hard job this year.

LEVA LASH, President.

Formal assumption of responsibility by the Women's Student Government Association for the conduct of the women of Missouri Valley College in their life on the campus was the result of steps taken by the faculty to fulfill the desire of the women students to secure appropriate conditions for study and social life, and to develop a higher sense of honor and individual responsibility.

The chief triumph of the year has been in seeing for the first time, actual benefit derived by a senior girl from the W. S. G. A. scholarship fund which was established last year.



W. S. G. A. COUNCIL: Vogel, Paxton, Carter, Chambers  
Gaba, Lash, Burton, Armstrong

M. S. G. A.



The Men's Student Government Association, although a comparatively new institution on the campus, this year being the third of its existence, has been a success, largely because the fellows have entered into it with a good spirit and have helped me carry out the duties of my office this year.  
GLADE HELZER, President.

The Men's Student Government Association is an organization designed for the purpose of self-government of college men. The major portion of its activities centers around government in Young Hall, the men's dormitory on the campus.

The organization is headed by a president and a house council composed of ten men who serve for one academic year. This house council, meeting in regular bi-weekly sessions, administers its problems along disciplinary lines in cooperation with the Dean of Men of the College and the Faculty Director of Young Hall.



M. S. G. A. COUNCIL: McKenzie, Berning, LaSauce, Niedermeyer, Milstead  
Lee, Jones, Helzer, Smith, Stipp  
OFFICERS for the past year have been: President, Glade Helzer; vice president, Buster Jones; secretary-treasurer, Carl Smith.

D. A. C.

The Dramatic Arts Club has had this year the largest membership in the history of the organization, and more consistent interest and cooperation than ever has been shown. This year every regular meeting of the club has had a program for the entertainment of the members. At the first of the school year the club sponsored a one-act play festival in which all the classes of the school took part.

The first major production of the club introduced Mr. Noel Coward's play, "I'll Leave It to You," to Marshall and Missouri Valley audiences.

The second play produced was Martin Flavin's "The Children of the Moon," in which Miss Dorothy Armstrong and Miss Lois Leadbetter handled difficult and tragic roles with an almost professional finesse.

The D. A. C. ended its season with a banquet at which ten club pins were awarded for distinguished service to the organization.

OFFICERS of the D. A. C. for the past year were: President, Christian Stipp; vice president, Bill Cayot; secretary, Jack Fauser; treasurer, Jimmy Sill.

*Stipp,  
has become  
great pleasure  
working under  
your supervision  
during  
year. I have  
really enjoyed  
knowing you.  
Keep up your  
good voice work.  
as one vocal  
student to another.  
M. Grinstead*



Raash, Godfrey, Johnston, Smith, Crain, Grinstead, Luehrmann, Davis, Renchler, Heynen, Lockridge, Robb, Cayot, Gruber, Harrold, Hughes, Connell, Dickson, Jones, Mitchell, Pritchard, Vondracek, Lash, Bethel, Hunsley.

# PI GAMMA MU

*Back number to you. It is now being prepared to be with you. You may think you have lost it but you will find it in the next issue.*



Sutton, Wingfield, Helzer, Crick, Stipp, Parsons, Holloway  
Mitchell, Stewart, Pritchard, Johnston, Huff, Sweeney, Lash, Malcolm

The Missouri Zeta Chapter of Pi Gamma Mu, the national social science honor society, was established at Missouri Valley College in 1931. Students who have at least twenty hours of B standing in social science courses and rank as Juniors or Seniors are admitted to membership. Also active in the organization are members of the faculty in the departments of History, Religion, Education, and Economics.

Pi Gamma Mu strives to instill in the minds of its members a scientific view toward social problems. Its motto is: "Ye shall know the truth, and the truth shall make ye free."

The officers of the Missouri Zeta chapter this year were: Mrs. Belle Campbell Huff, sponsor; James Sutton, president; J. M. Crick, vice president; and Gilbert Holloway, secretary-treasurer.

Other members were: Dean Helen B. Burton, Dr. W. W. Malcolm, Dr. W. R. Mitchell, Prof. E. L. Kelley, Mr. E. L. Parsons, Joan Stewart, Marje Moore Sweeney, Lawrence Lane, Lee Olive Pritchard, Mrs. R. C. Haynes, Leva Lash, Christian Stipp, Glade Helzer, Joyce Johnston, Ruth Dickerson, Francis Henderson, Wallace Wingfield, Hazel Leimkuehler, and Haydee Leimkuehler.

# PI KAPPA DELTA

The Lambda Chapter of Pi Kappa Delta, National Honorary Forensic Fraternity, enjoyed one of its best years during the past season. Participation included debate, the poetry reading contest, a student discussion at Excelsior Springs Provincial tournament, and the creation of an annual triangular debate meet between Central, Missouri Valley, and Westminster. This last part of the season's activity was made possible after consideration by the three schools when Missouri Valley made the suggestion.

The debate season was one of the most important parts of the season's activities. Missouri Valley had teams at the Maryville, Columbia, and Provincial debate tournaments. One of the most important meetings of the year was that of the Missouri-Kansas debaters at Kansas City, where Missouri Valley was selected as the Missouri team to debate a Kansas team, which was Washburn of Topeka.

The Chapter had a total membership of fifteen. The members were: Prof. Dwight Pasek, sponsor; Kveta Vondracek, James Sutton, Christian Stipp, Marje Moore Sweeney, Reinhold Jensen, Eugene Aulgur, Wallace Wingfield, David Eisenstein, William Fichthorn, Gail Jordon, James Williams, Bertha Gruber, John Sneed, and Joe Thompson.

The officers were: James Sutton, president; Christian Stipp, vice president; James Williams, secretary, and Marje Moore Sweeney, treasurer.



Aulgur, Wingfield, Eisenstein, Williams, Jensen  
Sutton, Pasek, Sweeney, Stipp

## BETA BETA BETA



Jensen, Jones, Johnson  
J. W. Jones, Napton  
Bryan, Dickerson, Cropp, Buzan, Cardy, Davis, McCall

The Gamma Xi Chapter of Beta Beta Beta was organized on the campus of Missouri Valley College in the fall of 1929. Since that time it has grown in size, usefulness, and prominence on our campus. Tri-Beta is an honorary biological fraternity founded to encourage scholastic attainment, to promote the dissemination of scientific truth, and to encourage biological research. With Service as another fundamental principle, Tri-Beta has offered the assistance of its members to any students on the campus who might be having difficulty with undergraduate courses in biology.

The officers during the past school year were: J. W. Jones, president; Derrel Bryan, vice president; Ruth Dickerson, secretary-treasurer; Reinhold Jensen, historian.

The roster of members includes ten active members, two honorary members, and two associate members. The members are: Louise Cropp, Derrel Bryan, Marion McCall, John Marshall, Mildred Davis, Eddie Niedermeyer, J. W. Jones, Ruth Dickerson, Reinhold Jensen, Woodrow Gaba, Helen Buzan, Helen Christiansen, Dr. Carter, and Dr. Johnson.

## BETA GAMMA PHI

THIS honorary scholastic fraternity was organized at Missouri Valley College in 1933 for the purpose of honoring those students in each graduating class who have shown exceptional scholastic ability.

At the beginning of the second semester those Seniors whose scholastic attainment has averaged at least 2.3 honor points are eligible to election by the faculty. Membership is limited to one seventh of the graduating class.

James Elvis Sutton was the only member of the class of 1939 eligible for membership in Beta Gamma Phi. Mr. Sutton enrolled as a freshman at Missouri Valley in 1935, and has received all of his college credits at this college. He entered as a competitive examination scholar and has been an honor roll student each semester. His scholastic average at the close of the first semester his year was 2.7 honor points.

Mathematics and History have been Mr. Sutton's major fields. For the last two years, he has been a student assistant in History, assisting Mrs. Belle C. Huff. He became a member of Pi Gamma Mu, the national social science honor society, during his junior year. He was elected vice president of the Missouri Valley College chapter, and this year was president of the chapter.

Mr. Sutton has been active in several extra-curricular activities. He has been a member of the college debate team for four years, representing Valley in two national tournaments, and in other speech contests. For the last two years he has been president of the local chapter of Pi Kappa Delta, national forensic honor society, and this year he has served as a member of the province council. On Senior Day this year, he was awarded a gold Pi Kappa Delta key in recognition of his service and achievement in forensics.

Last year Mr. Sutton appeared in the drama "Moor Born" as Branwell Bronte, and this year he carried the main role in "Everyman." For these performances he was awarded a D. A. C. pin this year. As a Sophomore, he received the John Calvin Brandon Award of fifty dollars for an essay on the life of Lincoln. He has served on the Sabiduria and Delta staffs, and has been a member of the Y. M. C. A.

Mr. Sutton received recognition as a student leader on the campus when he was selected this year to represent the student body at the inauguration of President Bibb. As a member and officer of the Student Senate, Mr. Sutton was one of several leaders of a reform movement that resulted in the creation of a new social organization on the campus, the enactment of election reforms, and the reorganization of the Student Senate on a more efficient basis. He was twice chosen by the faculty to appear in the Student Who's Who publication.

### ROSTER OF MEMBERSHIP

1933	1935
Jean Perry	Harold Brown
Mrs. Pauline Jordan	Alma Hudson
Frank Hearick	1936
Josephine Evans	None eligible
Lavinia Lower	1937
Mary Catherine Ryan	William Allen Ferguson
1934	Mildred Lois Collins
John Billings	Raymond Sidney Sullivan
Roxie Brown	Mary Hallar Vance
Margaret Mitchell	1938
Betty Pettijohn	Wilma Rollo Bruce
Robert Sutton	Thomas Hudnall Harvey



Dear Jimmy - Best wishes & much happiness to me I have truly enjoyed knowing. Be a good girl & stay awake.

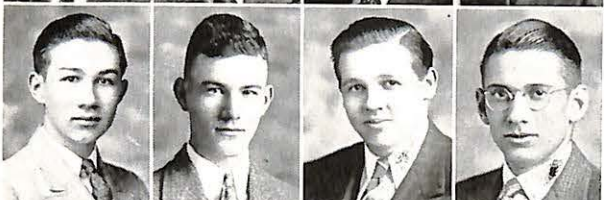
Beta Gamma Chapter of Sigma Nu Fraternity was established at Missouri Valley College in 1891. Although fraternities were banned by decree of the college officials in 1896, the original chapter was not given up and the chapter continued sub rosa for several years. The local chapter was re-established in 1931.



Sigma Nu has stood for justice, fair play, and good sportsmanship. The object of Sigma Nu is to maintain the high ideals of humanity and to further these ideals by cooperation with the existing standards of Missouri Valley College.



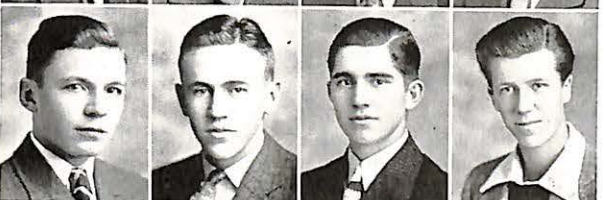
The officers for the year 1938-1939 were: Commander, Glade Helzer; Lieutenant Commander, Christian Stipp; treasurer, Jack Fauser; recorder, Wallace Wingfield.



If your ever in need look me up and all if I can't help. *Helzer*



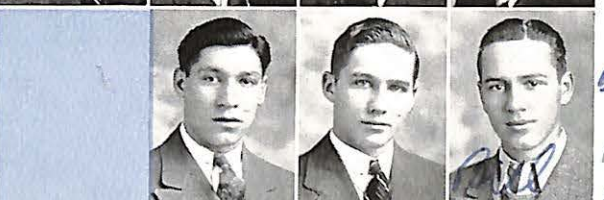
Ferguson  
Helzer  
Stipp  
Wingfield  
Fauser  
Miles



Napton  
Read  
LaSauce  
Fichthorn  
Hamilton  
Lockridge  
Fields  
Walker  
Bibb



Lamkin  
Patterson  
Thompson  
Marshall  
Porto  
Pearsa  
Schoffeld  
Cayol  
Franklin  
Hightower  
Sneed  
Allbee  
Wood



I send Betty Mae. I'm so glad you're not quit, and feel more than anything that I'm your sister. I'll miss you and your love. When you get back write me to let me know. Just call me up.

VALKYR

At the end of rush week activities, which included a tea, waffle supper, informal afternoon party, progressive dinner at the Arrow Rock Tavern, the following girls were pledged: Lucille Coad, Mary Ann McChesney, Dorothy Lake, Jean Dexter, Nancy Chiles, and Patricia Peithman. This group won the Helen B. Burton silver relish dish award, which is given each year to the sorority whose pledges make the highest scholastic average. The Valkyr pledges entertained the actives and their dates at a "comic strip" party in December. Before Christmas vacation, the sorority gave a Christmas Tree program in Assembly, at which the members of the faculty were given appropriate gifts by "Santa." Two more Freshmen, Vivian Earickson and Irene Churchfield, were pledged second semester. The two outstanding events of the sorority year were the Valkyr Carnival, which is to be an annual affair, and the Spring Formal, "The Spring Rhapsody," May 6. Officers for the past year have been: Olive Dickson, president; Helen Walton, vice president; Beulah Jones, secretary; Catherine Vance, treasurer; Elsie Mae Abrahams, pledge mistress; Kveta Vondracek, sponsor.

Dearest Robins, you're going to be that small one. I'm sure you'll do a lot for us for you're a swell gal! I'll always remember you as my infantile Paralytic friend! Love "Dot" Phillips

Vondracek  
Dickson  
Walton  
Jones  
Vance  
Abrahams  
McChesney  
Peithman  
Lash  
Sandbach  
Earickson  
Lake  
Coad  
Mitchell  
Chambers  
Connell  
Carter  
Phillips  
Powell  
Stewart  
Armstrong  
Dexter



Dear "Betty Mae"  
 Really it's a wonder you ever speak to me.  
 SIGMA PHI But I'm awfully glad you do  
 for I like you lots. Really I was  
 disappointed when I found you weren't  
 living in Binkhead. But next  
 year I'm coming over.

Dear Betty,  
 you are  
 the most  
 important  
 person  
 in my  
 life.  
 I love  
 you  
 with  
 all  
 my  
 heart.

The Sigma Phi Sorority is a social organization composed of twenty-five Valley girls. The activities of the sorority the past year have been very successful affairs. The high light of the fall season was the rush week carried on during the latter part of October and resulting in the pledging of ten new girls. The week of activity included a tea, two informal parties, one bridge party, and a formal dinner at the Hotel Bothwell in Sedalia.

Second semester found us initiating six of our pledges, pledging one new girl, Gladys Paxton, and initiating Mrs. Dwight Pasek as an honorary member of the sorority.

The social year was climaxed by a spring formal, with the motif, "An Evening in Paris." We look back over a very happy and successful year, and look forward to one even more enjoyable under the leadership of Mary McClure.

The officers for the past year have been: Roberta Soper, president; Mary McClure, vice president; Minnie Rhea Hohlt, secretary; Edith Gaba, treasurer; sponsor, Mrs. Pasek.

- |          |           |          |            |
|----------|-----------|----------|------------|
| Fields   | Crowder   | Gaba     | Scudder    |
| Lewis    | Jordan    | Pile     | Johnston   |
| Thompson | Bettinger | Hill     | Leadbetter |
| Soper    | Atwood    | Harvey   | B. Evans   |
|          | Heynen    | Huston   | Hughes     |
|          |           | Hohlt    | Vogel      |
|          |           | Hartzell |            |



Dear B.C.  
 I'm sorry you did get  
 so exasperated with me  
 but I have had fun  
 working with you in my  
 estimation yours  
 "ops" & besides that  
 your swell. So there's  
 wish you was  
 going in the D.H.  
 next year. Love  
 Lennie

## ALPHA DELTA KAPPA

Alpha Delta Kappa, under the leadership of Grand Chancellors O. H. Williams and Robert Tedlock, has provided much in the social life of the school.

Cooperating with the Student Senate, it pioneered in the new-style social hours. Its pledges entertained the pledges of Sigma Nu in an effort to better the understanding between men's social organizations.

Its spring formal presented Valley's first "name" dance band. In addition, a hayride and an informal dancing party were held earlier in the school year.

Plans are now under way for the first annual summer reunion, to be held in July of this year.

Other officers are Chancellor of the Council, Dick Dexter; Chancellor of the Seal, Carl Smith; Chaplain, James Sill; Altar Guard, Glen Berning, and Honor Guard, Cecil Orear. Edward Niedermeyer served as Pledgemaster.

- |          |          |             |
|----------|----------|-------------|
| Tedlock  | Smith    | R. Jones    |
| Berning  | Sill     | Johns       |
| Pelot    | Rose     | Niedermeyer |
| Williams | Hall     | Green       |
| Davis    | Gerhardt | Lee         |
| Smith    | Ritchey  | Jensen      |
| Dexter   | Mueller  |             |
| Milstead | Thompson |             |

Also members: Fullerton, Lober, Hearn



"Tom"

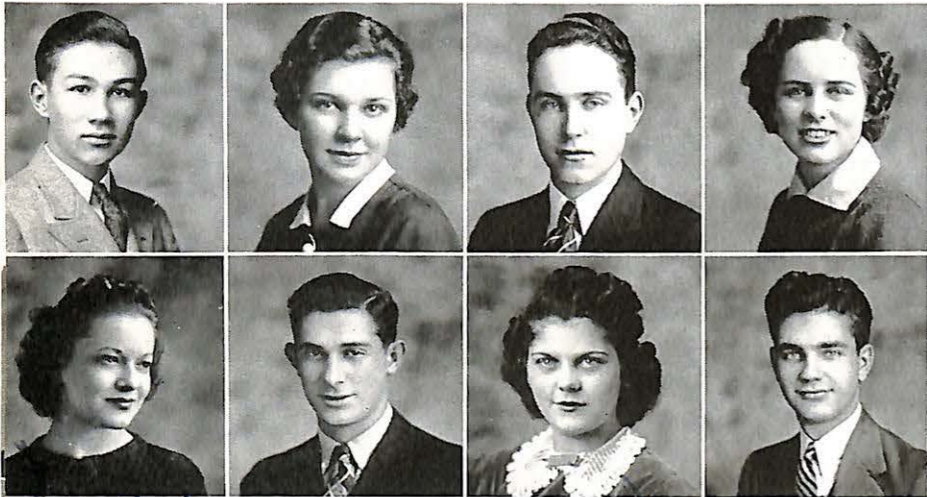
DELTA

*Dear "Wolf" -  
You know I am  
one of your  
strongest admirers. You  
have been wonderful  
to me this year. I wish  
my best wishes to  
you and Joe.  
Wally Wingfield*



CHRISTIAN STIPP  
Editor

WALLACE WINGFIELD  
Business Manager



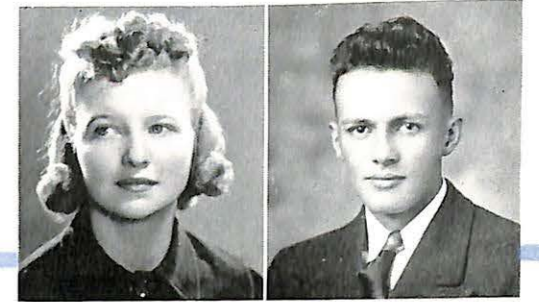
Napton Fields    Harvey Tedlock    Miles Hughes    Paxton Todd

*Dear Betty - last time I  
saw you are summer.  
I hope change you just  
coming. You are all I  
miss. Love  
Wally*

The Delta, the official news organ of the student body of Missouri Valley, received its name from the three literary organs on the campus when it was founded. A magazine until 1927, the Delta became a bi-weekly newspaper. It has been a member of the Missouri College Newspaper Association and has been honored with offices in the organization. The Delta has this year been nonpartisan, supporting only those policies which seemed beneficial to the school and students.

Dr. John M. Raines and Dr. Grace Thomas have served as faculty sponsors and advisers this year. Christian Stipp has been editor of the Delta and treasurer of the Missouri College Newspaper Association; Wallace Wingfield has been business manager; Mac Pearse, associate editor; and the staff has included Becky Knowlton, Bob Tedlock, Paul Todd, Catherine Vance, and Eleanor Fields.

SABIDURIA



MARJE MOORE SWEENEY    WALLACE WINGFIELD  
Editor    Business Manager

"How's the Sab comin'?" That's the question that has greeted me all year long. Well, here's the answer, and I certainly hope it's the right one. All the way through, we of the staff have tried to make the Sabiduria informal, informative, and above all, nice to look at and interesting. If the book meets these specifications, much credit goes to the staff, who helped me through my more frenzied moments. Dr. Johnson did valiant work on the organization pictures, and many of the snapshots. David Eisenstein used his new camera to get some of the more candid shots in the book. Peggy Hughes is responsible for the clever drawings, and Larry Lane for the spelling.

Wally Wingfield should be complimented for the way he held down two jobs as business manager, without slighting either one. My associate editor, Helen Walton, will be editor next year, and I hope she will have the grand staff and faculty cooperation that I have had.

MARJE MOORE SWEENEY Editor.

*Good Luck,  
Peggy*



Helen Walton    Larry Lane    Peggy Hughes    Jimmie Sutton  
Assistant Editor    Literary Editor    Art Editor    Data Editor

David Eisenstein    Beulah Jones    Dick Dexter  
Staff Photographer    Snapshot Editor    Sports Editor



Y. M. C. A. Cabinet: Rucklic, Robb, Lichte, Sill, LaSauce  
Jensen, Pasek, Mueller, Todd

The Young Men's Christian Association is the only campus organization open to all of the college men for the purpose of development in Christian thought and action, and with the Young Women's Christian Association makes up the Missouri Valley part of the World Student Christian Federation.

The membership of the Y. M. C. A. numbered thirty-seven, and the following were members of the cabinet: Byron Mueller, president; James Sill, vice president; Paul Todd, secretary; Erwin Ruklic, treasurer; Reinhold Jensen, John Robb, Bernard LaSauce, and Melvin Lichte, committeemen. Professor Dwight M. Pasek, faculty advisor, gave able assistance and guidance throughout the entire year.

The year was started with a retreat, when members of both the Y. W. C. A. and the Y. M. C. A. cabinets met and after hearing the reports of the two Hollister delegates, made plans for the ensuing year. The organization cooperated with the Y. W. C. A. in several programs of all-school importance, such as Freshman Week, Spiritual Emphasis Week, a Barn Dance and a Hayride. Other social affairs were an outing for new members and the annual Y. M. C. A. Banquet for the incoming officers.

Throughout the year educational and religious programs, presented at the regular Thursday morning meetings, were well attended by members and others actively interested in the group. These meetings included talks and discussions by students, ministers, and members of the faculty, and concerned problems vital to making life a success.

The Young Women's Christian Association is among the most worthwhile and most valuable organizations on the campus.

The "Y" this year sponsored Spiritual Emphasis Week, the Christmas Nativity Pageant, the play, "Everyman," in conjunction with the Dramatic Arts Club, one all-school party, two parties for "Y" members, joint meetings each month with special Thanksgiving, Christmas, Easter, and International programs, and a service at Odell Presbyterian Church on the morning of Baccalaureate.

A retreat was held in Indian Foothills Park on the first day of school, in order that the cabinet members might gain inspiration for their year's work.

The Y. W. C. A. held several social meetings throughout the year, and weekly cabinet meetings to discuss the activities of the organization.

The officers for the Y. W. C. A. have been: Joan Stewart, president; Lee Olive Pritchard, vice president; Bettie Evans, secretary; Minnie Rhea Hohlt, treasurer; Miss Kveta Vondracek, faculty sponsor.



Y. W. C. A. Cabinet: Billman, Evans, Luehrmann, Hoge, G. Evans, Gruber  
Hohlt, Davis, Vondracek, Stewart, Pritchard

## VESPER CHOIR



The Vesper Choir has in the past season presented six vesper programs on the first Sundays of the months. Dean Claude L. Fichthorn has directed the Choir as usual, and the programs have been composed of the great choral compositions of sacred music.

In December, 1938, the Choir and chosen soloists performed Dean Fichthorn's own composition, a cantata, "In Judea's Hills." The Choir also sang at the inauguration of Doctor Bibb, and on May 21 gave a performance of George Frederick Handel's "The Messiah."

The membership of the Vesper Choir this year has been more than eighty persons, most of whom have retained the great interest they originally showed in becoming members.

Mr. Rollin Godfrey was the assistant conductor.

The Missouri Valley College Orchestra has this year been augmented by Marshall players and students from the high school, and the resulting organization has been called the "Marshall Community Orchestra." The Orchestra accompanied the operas, "Sister Angelica" and "Magic Fife," and the ballet, "A Kiss in Xanadu."

Mr. Steven L. Barrett, who is the conductor of the orchestra, has done a great work in producing opera annually, and an especially great work in the double production of this year.

We have missed you in our organization this year. A good talent plus application and perseverance always produces results. Take heed, did you know that smoking is injurious to ones price? There are other features too!

Best of luck to a fine person -

Claude L. Fichthorn

The Chapel Choir, formerly known as the A Cappella Choir, was this year directed by Dean Claude L. Fichthorn. The Choir traveled about the country in the school bus over the week ends, singing in churches and high schools. Some sixty-three programs were sung, including a chapel program, a Sunday vespers service, and a program at the Marshall High School. The choir also served as the chorus in Puccini's opera, "Sister Angelica," which was presented on May 26 and 27.

The major tours of the choir included two trips to Kansas City, two trips to Springfield and Joplin, and one week-end trip to St. Joseph.

The membership of the choir this year was approximately forty, twenty of whom traveled each week end.

Mr. Rollin Godfrey, a senior, was the assistant conductor.



# W. A. A.

The Women's Athletic Association has been particularly active this year because of the many "live wires" who became interested in the organization and devoted much of their time and energy to it. Among the activities of the W. A. A. this year were a St. Patrick's Day informal dance in the Morrison Gymnasium; a float in the Homecoming Parade, and a Women's Gym Demonstration this spring in which several types of stunts, dances, and other athletic activities.



W. A. A. Cabinet: Cropp, Mitchell, Patterson, Smith, Lake, Luehrmann, Vance Pritchard, Johnston, Davis, Vondracek, Armstrong, Carter, Soper

The officers for the past year have been: Dorothy Armstrong, president; Joyce Johnston, vice president; Betty Carter, secretary; Janet Mitchell, treasurer. The committee heads were: Lee Olive Pritchard, basketball; Louise Cropp, hiking; Mildred Davis, tumbling; Roberta Soper, archery; Devonia Smith, soccer; Katherine Luehrman, hockey; Patricia Patterson, tennis; Dorothy Lake, dancing; Catherine Vance, volley ball.

# FOOTBALL

The "V" Club is an honorary organization for fellows who have proved themselves in athletics: football, basketball, baseball, or track. Lettermen, only, are eligible to the "V" Club, and most of the members have lettered in two or more sports. The club has done much to foster intramural sports on the campus, and is composed of as sportsmanlike and clean cut fellows as you'll find anywhere. Coach Ashford is sponsor of the organization and O. H. Williams has acted as president during the past year. The "V" in "V" Club stands for Vikings, and this organization has done more to perpetuate the Viking spirit than any other group on the campus.

- |   |   |  |  |   |
|---|---|--|--|---|
| Williams<br>R. Jones<br>Boyd<br>Gaba<br>Ritchey<br>Kohn | Buntin<br>Redford<br>Smith<br>Sugg<br>Geest<br>Richmond | Emmerson<br>Raymond<br>Bosley<br>Jones<br>Dexter<br>McKenzie | Hightower<br>Hamilton<br>Ludlow<br>Jeeter<br>McGhee<br>Burnett | Hall<br>Wood<br>Mull<br>Gerhardt<br>Patterson<br>Lamkin |
|---|---|--|--|---|

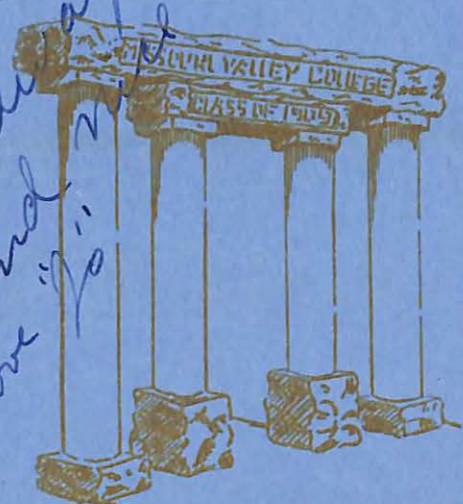


# PATRON'S PAGE

The Sabiduria staff wishes to thank the following members of the Board of Trustees of Missouri Valley College for their aid in the publication of this annual. We wish to commend them for their sincere interest in this college and its organizations.

John M. Roberts	Chicago, Illinois
Charles L. Bacon	Marshall, Missouri
Albert M. Keller	St. Louis, Missouri
Robert T. Morrison	Kansas City, Missouri
Emil W. Moore	Kansas City, Missouri
Cary Huston*	Marshall, Missouri
Paul Hurt	Slater, Missouri
Rev. Arthur J. McClung	Springfield, Missouri
Rev. D. C. Jensen	Lexington, Missouri
George P. Baity	Kansas City, Missouri
Dr. Otto Seymour	Joplin, Missouri

Dear Betty  
 it is rather  
 hard to say  
 just what I think  
 of you but I think  
 as sweet and I hope  
 you will always be  
 as now Love "Jo" as you



Dear Betty:  
 I wish you a bit of good  
 luck & I shall remember you  
 as a sweet head waitress  
 Day Hughes.

"LOOKING South on Brun-  
 wick," a visitor to the  
 campus may see Missouri Val-  
 ley's own edition of "the  
 columns." These columns, a  
 gift of the class of 1909, are a  
 part of every grad's memories  
 of M. V. C.

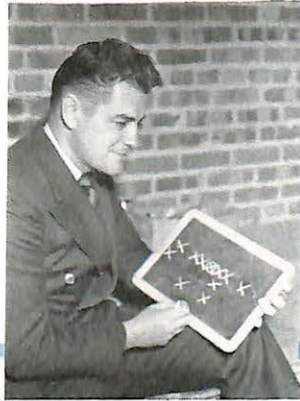
# The 50th year in ATHLETICS

OUR athletic year gave us a great deal of excitement and enthusiasm, and a great many victories. In these pages we want to pay special tribute to one of the best sportsmen and "triple-threat" men a school ever had—Roy "Daddy Bull" Buntini!



Snag It, Jimmy!

# FOOTBALL



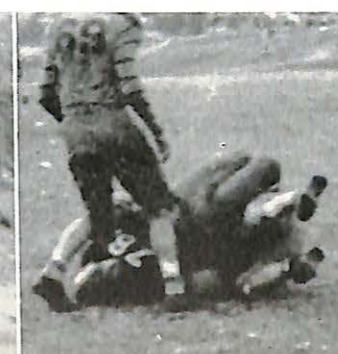
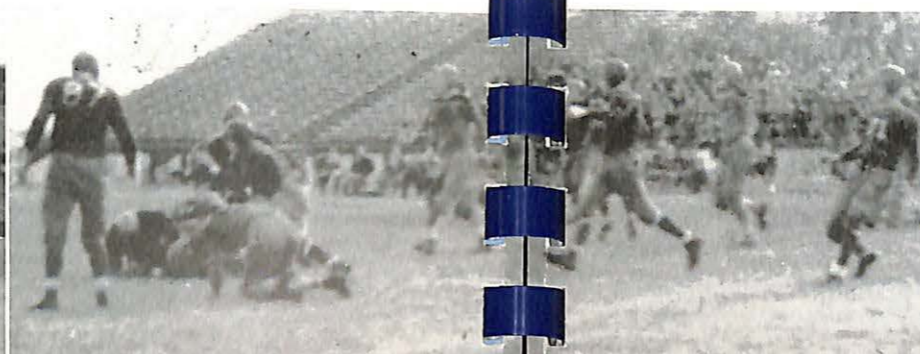
COACH ASHFORD

Missouri Valley's 1933 football squad acted in much the same way as the team of the previous year. A slow start was made in the defeat of Moberly Junior College, 12-6, on a hot, dusty night. Big Mack Gerhardt showed the power that night which was to make him the team's leading scorer and co-captain for next year.

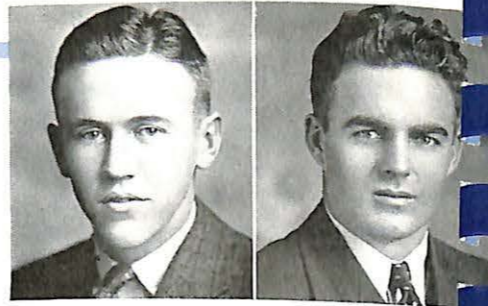
Kemper Military School, a powerful eleven, were victims of a perfectly coordinated Viking machine next, the Norsemen scoring at will in the 24-6 contest. Uriah Ritchey, co-captain-elect, sparkled on both the offense and defense, as did freshman Woody Wood.

The first letdown of the season came with the win over Wentworth, 33-7, in which only the play of Winton Allen, freshman quarterback, stood out, and the defeat by Rockhurst, who ran roughshod over the Orange to chalk up a 32-0 score. The Hawks, inspired by the death of Coach Pat Mason, baffled the Valley team, despite work-horse efforts of Grover Redford, freshman center, whose defensive efforts were a feature.

The Vikings came back the next week to completely out-manuever a sluggish William Jewell team, only to lose to the Cardinals, 7-6, on a fluke pass interception. The Norsemen played with well-developed precision, with



Betty:  
I never had a chance to  
congratulate you and Joe but  
here it is. Remember Psych.  
Good luck.  
Mark Gerhardt.



CO-CAPTAINS  
Norris Patterson      Roy Buntin

the passing of Roy Buntin, co-captain, and the running of freshman back Bob Hightower standing out on the offense, while a valiant defense was maintained in the line by O. H. Williams, J. W. Jones, and Woody Gaba, in particular.

Unable to shake off their unbelief in Jewell's ability, the Orange fell easy victim to an under-rated Culver-Stockton team, 7-13. The only high spot in the sluggish encounter was contributed by Boyd Ludlow's vicious tackling.

Rain kept the Vikings out of the win column when they played the Central Greenies a scoreless tie. Time after time the Eagles were forced to superhuman efforts to stop the vicious Valley machine. Co-captain Norris Patterson contributed some brilliant runs, but sloppy underfooting kept him from the pay dirt.

Like a pack of savages, the Norsemen ran rampant over a highly touted Tarkio eleven in the season's final, running up a 21-0 score while the bewildered Owls stood helpless. Every Viking who saw service performed as if inspired, and each was given his share of glory by the large Homecoming crowd.

In summary, the Vikings improved on last year's record with four wins, a tie, and three losses, and, because of the smashing final victory, were declared a success, in Coach Volney Ashford's second year at Valley.

# FOOTBALL



ROY BUNTIN

Betty  
Wishes wishing well  
give a world of success  
and happiness  
Roy Buntin

Roy Fred Buntin has been a letterman, member of the "V" Club, and all-round sportsman during all four of his Valley years. His calmness in the heat of play, his fairness, and his quiet common sense have done much to steady and "buck up" his teammates in every game. In football, basketball, and baseball he has played his best and rendered Valley invaluable service. That the fellows think highly of him is shown by the fact that he was elected captain in all three of these divisions.

It is only fitting that we, too, honor him and say, "Thanks for everything, and the best of luck to you, Roy Buntin."

# FOOTBALL



CO-CAPTAIN ROY BUNTIN—"Bull," in his quiet but powerful way, was an ideal leader. He was always calm under fire, but he played with a blazing savagery.

CO-CAPTAIN NORRIS PATERSON—"Pat," fiery and shifty, often supplied the needed spark on long Viking drives. His kicking was an added asset.

CO-CAPTAIN-ELECT MALCOLM GERHARDT—"Mack" gave all his strength and brute power every minute of the time. His speed on "end-arounds" is remarkable in one so large.

CO-CAPTAIN-ELECT URIAH RITCHEY—"Pur" is Valley's most publicized player, and well he deserves it, too, with his smashing, crashing defense work, and his pass catching ability.

ED McKENZIE—"Mac," accurate as a delicate machine on his center passes, could also back up a line in bang-up style.

O. H. WILLIAMS—"Willie's" ability, though not widely publicized, was recognized by Rockhursi's All-State end.

## TOP

Gaba  
Williams  
R. Jones  
Ritchey  
Kohn  
Buntin  
Redford  
Guest  
Raymond

## BOTTOM

J. W. Jones  
Patterson  
Ludlow  
Hamilton  
McKenzie  
Gerhardt  
Wood  
McGhee  
Hightower  
Burnett



# FOOTBALL

J. W. JONES—"Johnny" sickled down enemy defense men with a viciousness unbelievable in one so affable.

BILL HAMILTON—"Brutus" will be long remembered for his high-kneed runs, his blond head, unhelmeted, bobbing with the rhythm of his speed.

WOODROW GABA—"Woody" dropped would-be tacklers in a speedy and efficient manner, opening lanes for the Viking backs.

ROY JONES—"Tub" met each enemy charge with crashing bodily contact, and he blocked with jolting viciousness.

BOYD LUDLOW—"Ferdie" often broke through and nabbed enemy runners before they could get started, in addition to his valuable blocking.

MILFORD BURNETT—"Pete" was a greased rabbit on the gridiron, but his sparkling runs seldom outshone his defensive work.

EARL GEEST—"Butch," lion heart in a tiny cage, scampered in rare style, and always played even better when opposing former home buddies.

ROBERT MCGHEE—"Bobby" drove hard all the time, and his rifle-like passes offered many a thrill.

ROBERT HIGHTOWER—"Bob" never faltered once. Always it was drive, slash, bust, and slam, in blocking, tackling, or running.

GROVER REDFORD—"Grovo" gave the Valley secondary a fear-evoking power. It became common to see him drive in for tackles behind the line.

JACK RAYMOND—"Big Stoop" acquitted himself with honor in his first year, and is expected to come into his own next year.

WOODROW WOOD—"Woody" convinced enemy backs early in the season that his end of the line was closed for any of their business.

ROBERT KOHN—"Bobby" is expected to be of real service in next year's quest for gridiron honors.

# BASKETBALL

After several pre-season games uncovered bright freshmen hopes, prospects for the season were indeed good, with five lettermen returning. And the Vikings did begin the season with several non-conference wins. But hard luck, in the form of painful but minor injuries, and stiffer competition than the conference has offered in years, kept the small Valley quintet down in a tie for fifth in the M. C. A. U.

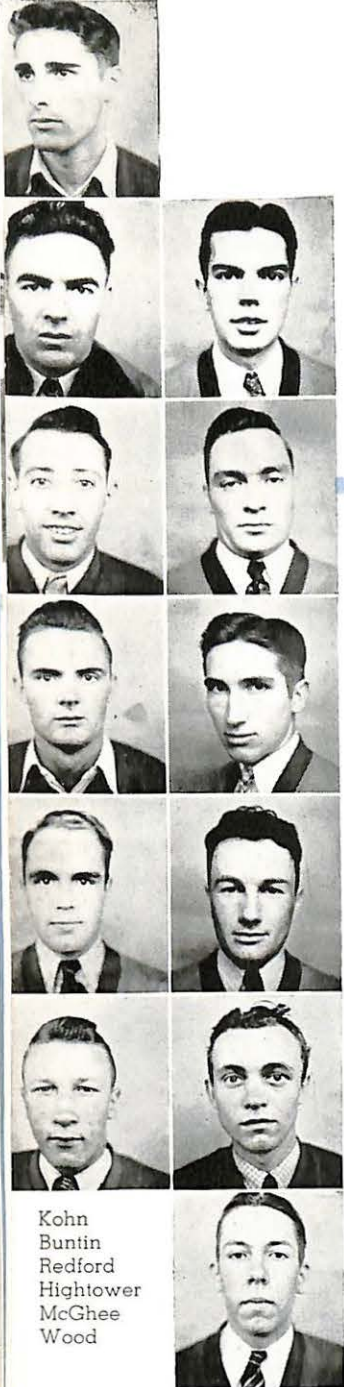
Many a valiant fight was waged by the Orange quintet, and early in the conference season it appeared the Norsemen would be "dark horse" contenders. But the long schedule weakened the cage crew, as the season progressed.

Perhaps the true ability of the team can be judged by its electrifying defeat of Central by a 46-36 score on the Vailey court. After Captain Roy Buntin had flipped in three counters in the first two minutes, the boys went wild, scoring both "luck" shots and set-ups from play formations. Everything they did was right, and the Greenies were a sorry sight that night.

But they couldn't keep up the pace for the season, though five sparkling freshmen, Dean Bosley, Marion Sugg, Grover Redford, Bob Hightower, and Woody Wood, and the lettermen, Captain Buntin, James Boyd, Tommy Hall, Browder Richmond, and Bobby McGhee gave more powerful foes some real scares.

Next year, with only Buntin failing to return, Coach Volney Ashford will have a well experienced crew, though they will lack size.

Vikings .....	59	St. Paul's .....	16
Vikings .....	36	Central .....	48
Vikings .....	46	Moberly Junior .....	22
Vikings .....	25	Culver-Stockton .....	21
Vikings .....	39	Moberly Junior .....	23
Vikings .....	35	Chillicothe .....	20
Vikings .....	20	Culver-Stockton .....	30
Vikings .....	31	William Jewell .....	21
Vikings .....	46	Central .....	36
Vikings .....	26	Tarkio .....	31
Vikings .....	35	Chillicothe .....	27
Vikings .....	35	Tarkio .....	44
Vikings .....	69	St. Paul's .....	33
Vikings .....	29	William Jewell .....	33
Vikings .....	38	Drury .....	49
Vikings .....	23	Drury .....	44
Vikings .....	28	Westminster .....	38
Vikings .....	36	Westminster .....	48



Kohn  
Buntin  
Redford  
Hightower  
McGhee  
Wood

Boyd  
Sugg  
Richmond  
Bosley  
Jeeter  
Hall

*I thought it was a pretty good game. I hope you will like it. Lots of luck, Bosley.*

# BASEBALL

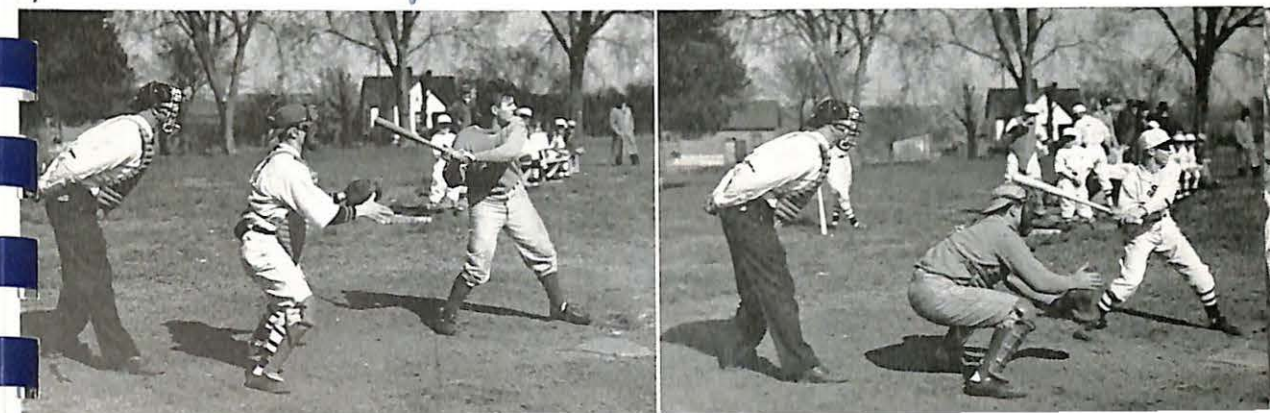
An increased schedule faces the seven baseball lettermen and seven "rookies" this spring. Coach Volney Ashford believes that this will help bring baseball back to the fore as an M. C. A. U. sport. This year the team is playing on a self-supporting basis, and crowds are larger than at any time in recent years.

Captin Roy Buntin has been well supported so far by his six lettermen, Tommy Hall, LaJelle Jeter, James Boyd, John Mull, Norris Patterson, and Woody Gaba; and much aid has also been given by Grover Redford, Dean Bosley, Bob Thompson, Christian Stipp, John Husiak, Erwin Ruklic, and George Holt.

The balance of the season lies ahead as this goes to press, but the team is expected to do much better than break even.

Power at the plate and a powerful pitching staff is the forte of the Vikings this year.

*Miss, Bettie, I truly hope the longest days of your life are over. I hope you will be successful. Refus.*

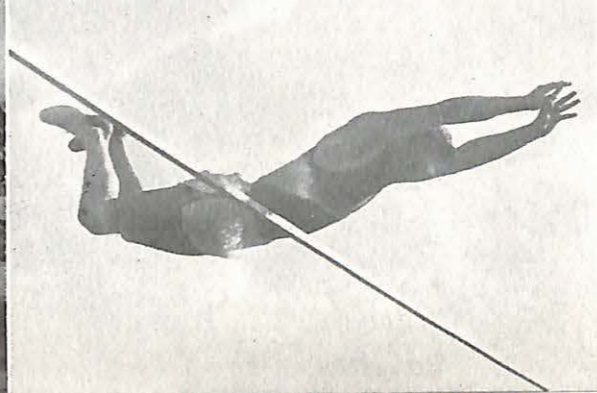


# TRACK

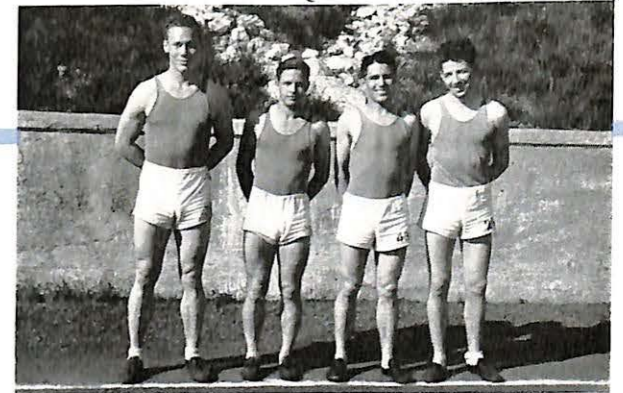
Faced with building a contending track team after losing six conference point winners, Coach Volney Ashford and Captain O. H. Williams have responded in gallant fashion. Eleven lettermen, Mack Gerhardt, Dick Dexter, Bill Hamilton, George Emmerson, dashes; Earl Geest, Carl Smith, half mile; Ed McKenzie, John Lamkin, pole vault; Captain Williams, hurdles; Uriah Ritchey, shot and high jump; and Boyd Ludlow, javelin, comprise the nucleus of this year's squad.

New men who have acquitted themselves with honor are: Vermillion Deditius, sprinter; Bob Tedlock, hurdler; Jack Hearn, miler, who has broken the school record already; John Sneed, and Bill Fichthorne, two-milers; Bob Hightower, broad jumper; Dean Swisher, high jumper; Woody Wood, pole vaulter; Bob Kohn, in the javelin; Grover Redford and Jack Raymond, shot putters.

*Good luck to a real swell guy. your credit to the class. Congratulations on everything. Pitcher*



# TRACK



Cerhart, Geest, Emmerson, Hearn

The Viking sprint medley relay team, Gerhardt, Dexter, Geest, and Emmerson, placed fourth in the college class at the Kansas relays, in April.

Missouri Valley -----	86	Wentworth -----	36
Missouri Valley -----	45	Kemper -----	82
Missouri Valley -----	97	Central -----	39
Missouri Valley -----	79	William Jewell -----	57
Missouri Valley -----	88	Drury ----	38
		Chillicothe ----	36

*Dear Betty  
my success & happiness  
is yours.  
"Grover"*

## TENNIS

Captain Browder Richmond has assembled Valley's most formidable tennis team in several years, and great things are expected of it in the conference meet.

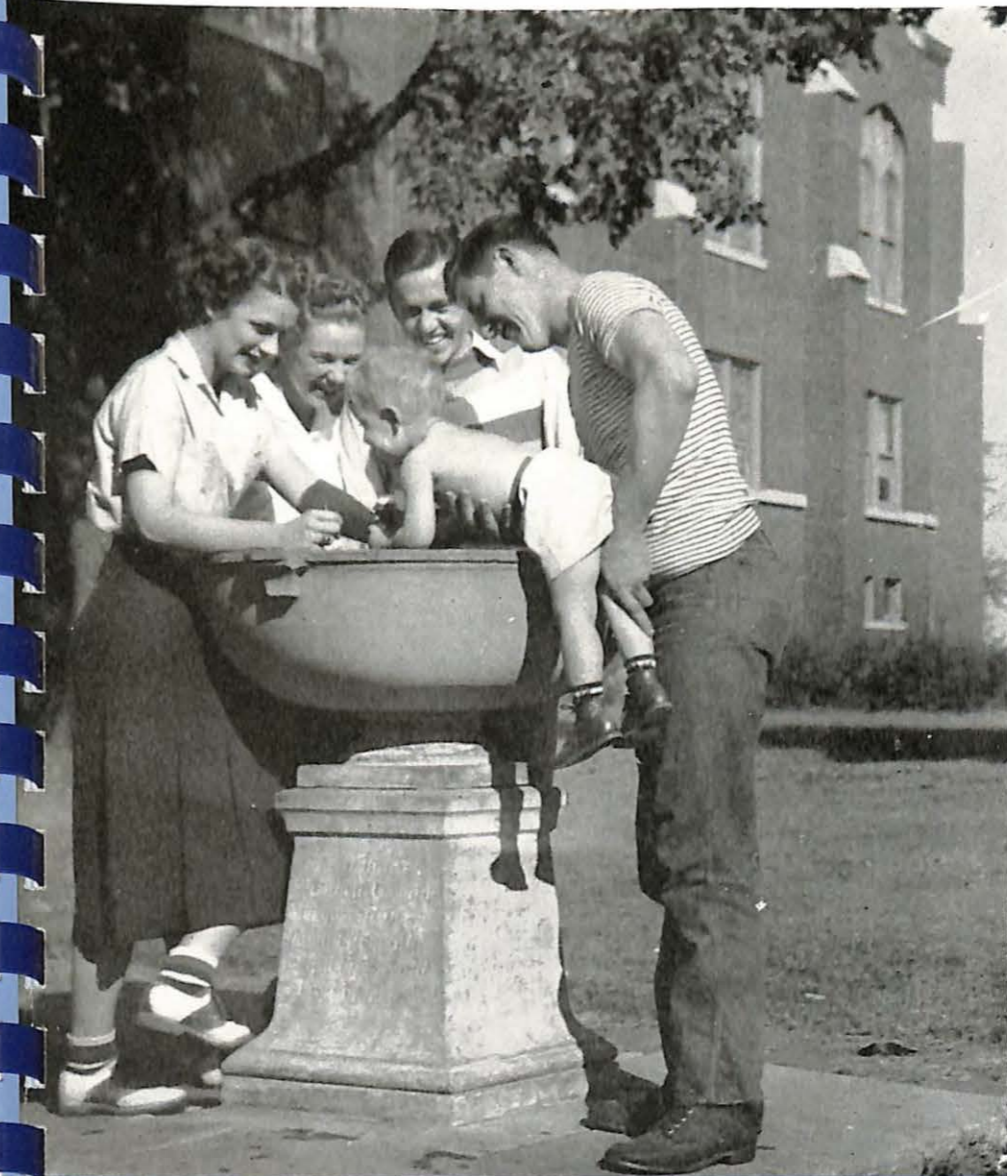
Teamed with Bob Steele, Richmond hasn't been defeated in doubles this year. Wallace Wingfield, Andrew Albee, and Bobby McGhee are the other members of the group.



**T**HE FOUNTAIN, standing in the center of campus activities, is ornamental all year round, and useful in spring and fall for cooling the brows of feverish students. It also serves as a post of meditation upon Life in General (and it's the very place to take snapshots).

# The JUBILEE FEATURES

OUR Fiftieth Jubilee features  
include our favorites and  
a chronicle of some of our  
special occasions and good  
times. Happy Birthday, Valley!



Nice Goin', Tubby!

Harvest Queen  
SIGMA PHI

"Bobby" to everyone, this girl is as sweet as her picture would lead you to believe.

Roberta Soper



Bobby

Dearest Betty -  
There are so many things that I want to say to you and I really don't know where to begin. Remember those moonlightings over at Birchhead that night we went thru your windows our double dates that year, and best of all those games we got this year. Betty you have been such a dear friend that my old throat chokes up when I think of saying good bye. We just must keep in touch with each other since I love you so. Don't worry about Valkyr next year, dear. You'll make a wonderful president with all that Valkyr spirit & cooperation you can't go wrong. You mean so much to me Betty that I can't express how I feel about you. I love you, dear, and wish you much happiness & good fortune.  
Dickson

Much love,  
Oliver "Sticky" Dickson

P.S. You my rich man has become universal thanks to you. P. Carter!



May Queen  
VALKYR

"Sticky" Dickson, always busy, most usually talking, and always bearing responsibilities well.

# Senior Queen

VALKYR

Although "Little Leva" is one of Valley's busiest girls, she never lets her many duties mar that fine personality.

*Leva Lash*



Dear Betty, Mae-Robin and it irks my  
soul that late and the lack of time has prevented  
year. I'm so pleased that you're the Prez for next  
year because you are so capable and a true  
Valkyr at heart. My very best wishes, Hon, for  
all kinds of happiness and success.  
Love, Leva.



*Helen Walton*

# Junior Queen

VALKYR

Helen, the "personality gal," is versatile and talented. She does many things and each one she does well.

# Sophomore Queen

## VALKYR

Red-headed, vivacious, athlete's delight, "Dot" Connell is always the center of fun and mischief.

*Dorothy Connell*



*Dot, I'm so glad to see you in office. You are a swell. I think you are going to be a leader. The best thing you can do is to take any thing you like to do and do it. I hope you will be a success. Love, Pearl*



*Jean Dexter*

# Freshman Queen

## VALKYR

"Pearl" Dexter, spark plug of the Freshman Class, has been a one-man pep squad all year, and has made the campus a livelier place.

Most Popular Girl  
VALKYR

"Dottie" has been Valley's favorite for three successive years —need we say more?

Dorothy Armstrong



Dear Toots:  
you and Joe can  
take care of things for Dorothy  
and me next year, but please  
don't wreck that poor old diwan.  
I guess Joe will have to help you  
"guard the campus."  
Sincere Best Wishes  
-Pat-

P.S. Why don't you grow up.

Norris Patterson



Most Popular Boy  
SIGMA NU

"Little Pat," athlete, student senator, and big brother to the "Campus Kids," is one of the best fellows we've seen on the campus, and will take a lot of Valley's "local color" with him when he leaves.

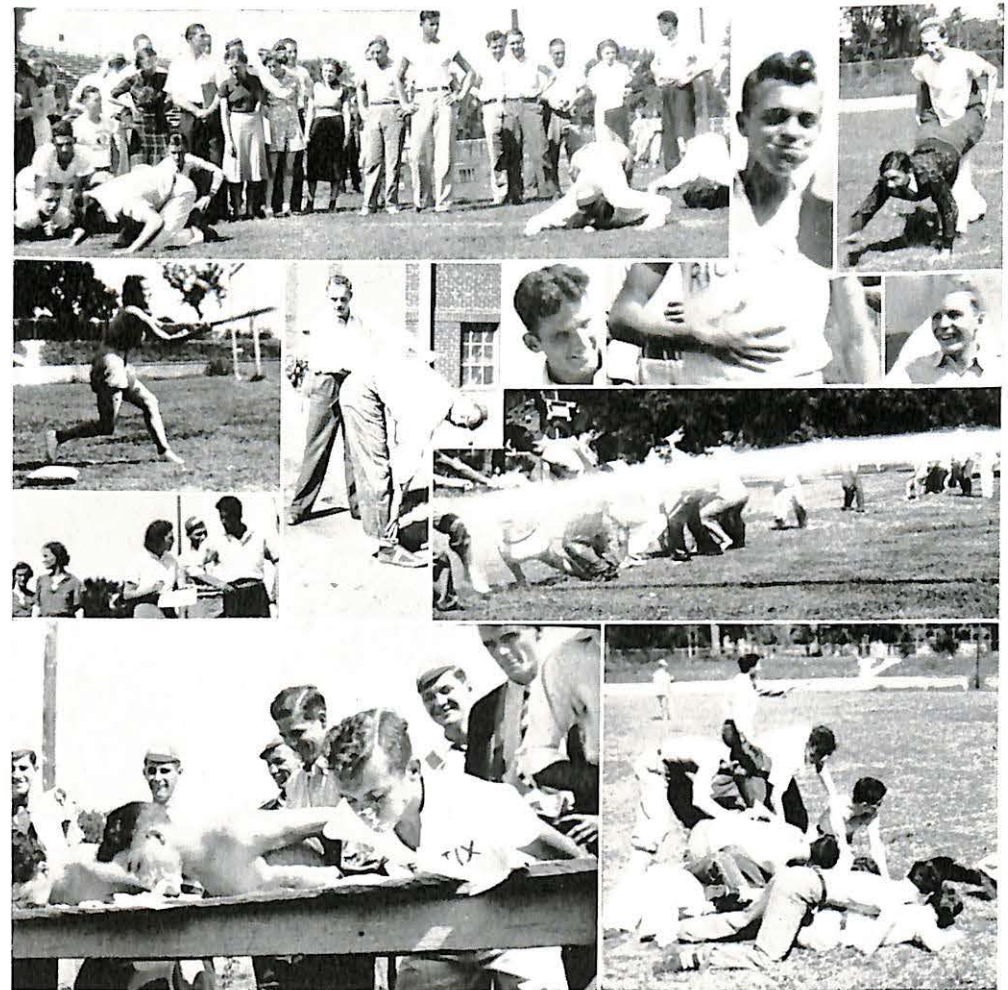


The President and Faculty  
of the  
Missouri Valley College  
extend their heartiest wishes to  
each member of the class of  
Nineteen hundred and thirty-nine



May Your Graduation  
mean to you  
the commencement of a life of fullest relationship  
to your fellow men  
and may your ultimate reward be  
a peaceful kinship with God

# Spree Day



Loeffler plays Mae West - - Jeeter, full of pie - - Raash and Pearse take a constitutional  
Davis makes a hit - - "Put 'er there, Ludlow!" - - Pretty man Ritchey - - Johnny looks happy  
"What's the score?" The Freshmen don't know - - - A wet party  
Watch that pie go! - - - There's plenty of room at the top

**Air Conditioned**  
**Refrigerators**

WITH  
*Pure Taste Free* Ice Cubes

**MARSHALL ICE, STORAGE & FUEL CO.**

● PHONE 31

*College Students WELCOME ! !*

THE RENDEZVOUS Always Caters  
To **YOUR** Desires

\*\*\*\*\*

We Make Our Own ICE CREAM  
**FRESH DAILY**

\*\*\*\*\*

FOUNTAIN SERVICE — CANDY  
CIGARETTES  
COFFEE — SANDWICHES

\*\*\*\*\*

We Make Our Own SOUP and CHILI

**The Rendezvous**

MARION B. EARLY

Phone 44

East Side □

—We Deliver—

GIFTS

STATIONERY

EXCELLENT

PRINTING

\*\*\*\*\*

School and Office  
Supplies

**FISHER'S BOOK STORE**

NORTH SIDE SQUARE

Phone 13

The Business Manager of the Sabiduria wishes to thank the Merchants of Marshall for their fine cooperation this year, and highly recommends them to the Students of Missouri Valley College.—Wally Wingfield.

SENIOR PROPHECY

**T**HE year is 1950. Missouri Valley College, just as we would have expected it to do, has expanded to such a vast extent that it has become world famous as the most cultural and influential, energetic and lively and fashionable thirty-nine and one half acres in the world. You know that Valley used to have an added half acre upon which stood Young Hall. But throughout the years of constant floor-wars, house-wars, and general destruction, this blessed section of land has degenerated into the lower realms. There is at this place now only a great cavity owned and excavated by a junk yard.

As said before, Valley is world famous. So famous, in fact, has it become that the World's Fair committee has decided it the opportune spot upon which to station the World's Fair of 1950.

Of course everyone who has been connected with Valley will make an effort to be there to attend the fair. So let us take a tour through the International Show Place at Marshall town and learn what the eminent class of '39 is doing.

Arriving at the main arch (upon which has leaned many and many a jelly of the past) we have to jump out of the way of a Bantam roadster which is being driven by Eleanor Belle. After chatting with her a bit we go to the ticket window, where we discover Glade Helzer selling tickets for admission to the Fair. The price is rather steep, but Glade always was able to get what he went after.

To the right is the Administration Building. The first person we see in there is Little Leva Lash, as she used to be, always burdened with responsibilities and honors. Her duty now is to see that everyone who visits the Fair receives a view book. Valley has become so crowded with side shows, museums, and what-not that one certainly needs a book to find one's way through the intricate mazes of the Fair grounds.

In front of the building is George Emmerson, waiting to drive us through the grounds. George holds the national speed record for jinricksha races.

On we wander through the crowds until we come to a beautiful new red brick building bearing a sign, "Hall of Horrible Freaks, Beautiful Miracles, and Renowned Unrealities." This seems a quiet place; perhaps we should enter. Upon doing so we find that it resembles a carnival side show. At the first step we stop and peer at the man who slept for twenty years and still looks sleepy. It resembles—ah, it is—Woodrow Gaba.

Those weird sounds, emanating from a room over there, we find are coming from the "Supernatural Exhibit." Marje Moore Sweeney seems to be the highest executive in this place. She is the world's best when it comes to getting in touch with the dead.

Next can be seen that mean man Brutus Hamilton, fearlessly exhibiting his troop of trained fleas.

In another place we find our Daddy Bull Buntin proudly displaying his eleven stalwart sons who have followed in their father's footsteps in becoming powerful and potent He-men.

By this time our feet have begun to pain us to the ouching point. Chance brings us upon Paul Todd who is selling "No Pinch, No Rub, No Squeeze, No Good" shoes, he himself having designed them for Fair ground stomping.

With our tootsies made more comfortable, we think it a good idea to visit a near-by cabaret for that pause which refreshes. As we enter the door we hear the sad notes of a blues singer. Much to our amazement we find this dejected vocalist to be none other than Jimmy Evans. The big man with the tiny apron behind the bar is Barney LaSauce. We thought that he would be an artist back in those days at school, but he always was good at concocting punches.

On the stool at the bar is a thin woman commanding an army of empty glasses before her. Examining what was the content of these glasses we learn that they have held Cocomalt; and now we recognize the lady drinker—it is Olive Valetta Dickson.

After being refreshed, on we go to the amusement palace. What an array of talent is presented here!

There is Lee Olive Pritchard thrilling audiences with a daring trapeze act. Passing on we come to the Music Hall, where we listen to the thousand blended voices directed by Rollin Godfrey.

As a special attraction the Music Hall is featuring today an organ recital by Helen Tarver. She earns her daily bread by serving as a professional model for Hammond Organs.

Sally Rand and Gypsy Rose Lee have nothing on Valley's most popular girl in 1939. We remember Dottie Armstrong as being graceful and husky during her college career, but little did we think that we would ever see her in the amusement palace giving a dance—no, not fans, not balloons, not bubbles—but with iron dumbbells.

Following her performance, the audience is introduced to the renowned orator, Orlen Harlan Williams, who gives us a brief discourse on "My Advice Against Being a Student President."

At the conclusion of his speech he stammers a bit, then blushingly discloses that his speech was written eleven years back by James Tom Pendergast Sutton, who we learn is today making the Fair a success as the sole member of the executive committee.

## SENIOR PROPHECY

Next in line is a performance by the most famous director of the kind in America. Naturally we are not too surprised when we see Director William Cayot present his original one-act show featuring "The Peppiest Puppets of Puppeyville."

Cayot's act concludes the events in the Amusement Palace.

The Fair grounds are beautifully designed and decorated with unusual lighting effects. If you should inquire as to who designed the electrical work of this spectacle, Fair officials would point with pride to Artist Edwin McKenzie and the president of the General Electric Company, John Robb.

Out in the open once more we see quite a delegation in front of one of the buildings. We inquire as to just what is happening there. It proves to be merely a group of old Valley students getting together to visit and talk about their affairs for the past eleven years. In this group we find the most eminent woman doctor of Slater and Marshall, Dr. May Augusta Billmann.

Francis Henderson, the singing evangelist, is in the group.

We have a nice chat with Janet Mitchell who is now a schoolmarm.

We learn that Gladys Paxton is still up to her old tricks of pounding the keys. Pax has a good job as local telephone operator.

Tiny Vogel and Virgil Leimkuehler honor us by passing out to us a few samples of their latest discovery which they have combined their biological knowledge and efforts to invent. In each little sample package is a guaranteed cure for corns!

Two famous ex-Valleytes modestly receive our congratulations for their attainments; Joyce Johnston is now president of the Girl Scouts of America and Byron Mueller has recently been elected National Y. M. C. A. janitor. Ruth Dickerson is in our little group, but we had to inquire just who she was. She was so swathed in bandages, tapes, etc., that recognition was practically impossible. It seems Ruth was playing with a new experiment in a chemical factory and she made the mistake of striking a match too soon! Gladys Haynes is also in our group; she lends much color to all of our conversations by telling us of her interesting experiences during a recent archaeological trip to Syria.

Buster Jones is putting his mechanical knowledge to advantage, by attempting to invent a device which can be used to open the little doors where one pays to enter the Fair.

Someone calls our attention to a lonely, dejected looking individual sitting on a curbstone, holding a scrap of paper. We notice Reinhold Jensen holding the head of the poor unhappy looking person. Since 1939 Reinie has learned a good many pointers on nursing the unhappy. We wander over to this couple and discover this disconsolate human to be Lawrence Lane. We take the scrap from his wrinkled hand and read in Larry's own handwriting, these words:

"My days of poetry are past,  
I've lost my art of verse;  
If I had led a life of sin  
My lot could not be worse."

Sounds of the unblended harmonies of a four-piece orchestra come to our ears. Buddy Fields is the director of this group. He also serves as collector of the pennies that kind souls hurl to the feet of these musical madmen.

We are getting weary from standing so long, so now let us attend a theater and see a double feature. On the way Johnny Jones crosses our path, still pushing a mower. He is the caretaker of the Fair grounds. As I said, there are two features at the cinema. One is the showing for the fifth consecutive week of the screen hit, starring Father Norris Allen and the Dead End boys. The other feature is a stupendous presentation of "Cyrano the Bergerac." Outside the theater we noticed a handsome gentleman with a large sign on his back, the sign reading, "The star of this picture, Jimmy Durante, is unfair to Bigger and Better Noses." If we look twice we see that the bearer of this sign is our old scent chaser, Christian Stipp.

Mary Letta Searfoss plays opposite Jimmy Durante, as the Cigaret Girl.

We have spent all of our money, our feet are weary, and it is after nine o'clock, so, since we are not as gay and agile as we used to be in our college days, we now leave the Fair grounds. At the exit gate we bump into a last acquaintance. It is Joan Stewart. If you scrutinize her actions you will see her wheeling a little carriage, and crooning softly, "Is oo sleepy, Jimmy Junior?"

HELEN WALTON.  
LUCILLE COAD.

# Shoes

# Clothing

FOR OVER FIFTY YEARS

## Rose & Buckner

MARSHALL, - - - - MISSOURI

# ● Automatic Coal Stokers

THAT FURNISH  
EVENLY CONTROLLED HEAT  
AT ITS BEST

**Marshall Ice, Storage & Fuel Company**  
PHONE 31

*Package Candy*

WHITMAN---LIGGETT

**Red Cross  
PHARMACY**

G. C. WATERS, Proprietor

**The REXALL Store**

Kodaks, Prescriptions, Soda  
Water, Amateur Film  
Developing

Phone 250

MARSHALL, - - - MISSOURI

## THE DEMOCRAT NEWS PRINTING COMPANY

Appreciates the patronage it had the  
last year from Missouri Valley College  
and its students.

This company stands ready at all  
times to serve the college and its  
students in whatever capacity its  
assistance may be sought.

R. N. HAINS, President  
R. K. HAINS, Secretary

Marshall, Missouri

We Wish to Offer  
Our thanks and Best Wishes  
to Our Advertisers

Marje Moore Sweeney.  
Wally Wingfield.

### MISSOURI VALLEY COLLEGE

takes this opportunity to congratulate the City of Marshall  
on its One Hundredth Anniversary  
and to wish it a growing and prosperous future.

## SENIOR WILL

### MANUSCRIPT FOUND IN A BOTTLE

TO WHOM IT MAY CONCERN—Morituri Salutamus!

I, James Sutton, sole survivor of the Senior Class of 1939, am hurriedly writing down the fate of the Senior Class who have gone to their long reward. I am on the Island of Capitalonia, the last place the Senior Class touched on its Grand Tour around the world in search of a job. Unable to secure positions anywhere else, the Class in desperation set sail for this island, where, they were told, the Capitalists occasionally employed Seniors of unusual promise.

However, upon our arrival, we were horrified to find the Capitalists a very savage tribe, on the warpath, and very hungry. This is the story: We were captured and devoured, with one exception, myself—and they are fattening me to celebrate the return of the Republicans in 1940. Since only a few days are left me, I am carrying out the last wishes of my deceased classmates and bequeathing their outstanding possessions (which they couldn't take with 'em) to those left behind, and a sage admonition: never look for a job if you don't want to meet the same fate.

This, then, is the will and testament of the Senior Class of 1939, and my last wish is that it will be found before the world loses its sense of humor.

Poor Rollin Godfrey—he was the first to go. He didn't need any fattening. Rollin leaves the Chapel Choir to Clicker in the hope that he will teach them to sing "Three Little Fishies." He gave his slip-horn to a capitalistic jitterbug and so has nothing else to leave.

Barney LaSauce followed immediately after. Barney leaves his portly carriage to Cecil Orear and begs him to substitute it for his own shambling gait. He leaves his story-telling ability, and his book, "How to Become the Life of the Party in Ten Easy Lessons," to Eugene Augur.

Larry Lane, who never could realize that he wasn't on a choir trip in the Ozarks, drove the Capitalists well-nigh mad, and he was eaten next in self defense. He took his voice with him, but left his music to Henderson.

Leva Lash, who supplied only a tidbit for the rapacious Capitalists, leaves her many honors and offices to Catherine Vance, Betty Carter, Minnie Rhea Hohlt, and Louise Cropp, hoping that no one of them will find her legacy too overwhelming. She also turns the library back to Miss McDonald.

Marje Sweeney succumbed to dementia praecox before she was roasted, and wandered about the island muttering, "Has the Sab come yet?" over and over again. She leaves her husband to Bettie Evans to replace poor Byron, and her house to whoever will keep it clean.

Virgil Leimkuehler leaves his Ford to Mr. and Mrs. Hartsook to use in the winter time.

May Augusta Billman leaves Slater to Sal Porto, who can handle it if anybody can.

Beulah Jones entertained the Capitalists for weeks with Jones stories, but was prepared for Sunday buffet, when company came in unexpectedly. She leaves a ton and a half of coal to Missouri Valley College, in hopes that Stewart Chapel will be kept warm.

Ruth Dickerson leaves the Biology Lab, never to return.

George Emmerson gave the Capitalists a mighty chase but finally fell into a hidden trap, which had been set for the CIO. He leaves all the other sprinters far behind.

Dorothy Armstrong almost became the Great White Goddess of the Capitalists, but their hunger overcame their aesthetic instincts, so she leaves Miss Vondracek to Samuel Goldwyn.

O. H. Williams wasn't worried about leaving the duties of Student President to Wally Wingfield, but can't figure out whom it will be safe to leave Maryn Lewis to.

Gladys Paxton was almost retained as private secretary to the Capitalist chief, but they got into an argument one day, so Gladys leaves Dean Pettijohn and Dr. Mitchell running around in circles.

Christian Stipp was sorry to go only because he couldn't make a speech after the one dinner held in his honor. He leaves a wedding ring to Ritchey. He explained that he got stood up at a wedding once.

Olive Dickson was chopped for hors d'oeuvres. She leaves the Valkyrs to Betty Carter, and Johnny Marshall in a trance.

Glade Helzer tried to join the Capitalists, but failing that, pulled a good joke on them. He kept on his angora sweater in the boiling pot, and the Capitalists still don't know what gave them indigestion. He leaves his work in the Business Office and the Accounting Department to whoever is big enough to handle it.

## SENIOR WILL

Lee Olive Pritchard leaves a fine record behind her, and she also leaves Dr. Malcolm to the tender mercies of Lucille Coad. In a moment of generosity she left a trust fund to Campbell Hall to be used for fuses.

John Robb leaves the Physics Lab in order. How long will it stay that way?  
Raymond Hayob leaves the Red Cross Pharmacy to Shirley, and his sales ability to Mr. Johnston to use on prospective students.

Hamilton rebelled, as usual, from his fate and had to be kept in a special cage. He leaves his courage to the Junior Class who may be in the same fix themselves some day. He couldn't leave Phronsie, because he was carrying her in his pocket and she got cooked too, by mistake.

Janet Mitchell leaves practice teaching with no regrets, and the D. A. C. make-up kit to the Leimkuehler twins who will probably have a lot of fun with it.

Helen Tarver, hearing the old saw about "music hath charms" tried to soothe the Capitalists, but when she sang "I've Been Working on the Railroad" they became enraged, so Helen leaves her angelic expression to Florence Hartzell, requesting that she wear it often.

McKenzie was retained for quite a while as handy-man, and general fixer-upper, but he happened to be working in the kitchen one day when the grocery man forgot to make his delivery, so Edwin gives his imitations of Mortimer Snurd back to Bergen.

Francis Henderson quoted everything from the Bible to Shakespeare to the Capitalists to convince them they were sinning, but when they heard about the loaves and fishes, they got hungry again, so Francis leaves Larry Lane's music to Buster Crick, in case his voice doesn't change.

Johnny Jones leaves the campus to "Suzabella" the lawn mower, and the Alpha Psis to Young Hall, with a headache powder.

Genevieve Evans was given a special mark of respect by the Capitalists, who arranged for soft music to accompany her at dinner. She leaves Dean Fichthorn looking for someone to take her place.

Bill Cayot so impressed the Capitalists with his smooth line that they served "Cayot a la king" at a formal banquet. He leaves his car to Gene Jensen, and hopes that Gene will keep his eyes open while he's driving.

Paul Todd looked so young and tender, that the old meanies cheated a little and served him as "spring lamb." He leaves his bow ties to Charley Bunce, so that Becky Knowlton won't miss them too much.

Buster Jones printed all the Capitalists' complimentary business cards. But even that didn't save him, so he leaves his scientific knowledge to all the struggling undergrads.

Gladys Haynes leaves her car to Mrs. Huff so that she can drive to New York and San Francisco for both fairs. She left word that Mrs. Huff could also have her share of Hitler.

Eleanor Fields leaves her name, "Little Pie," to Lagette Jeeter, since she's so tiny that when the Capitalists finished with her, there just wasn't anything else left.

Joyce Johnston promised scholarships to almost all the Capitalists if they would spare her, but they all said that their most successful tribesmen had never been to college . . . so, Joyce leaves her worried expression to anyone who has to take a history comprehensive next year.

Roy Buntin leaves his nickname, "Daddy Bull," to Tedlock, to whom it will apply just as appropriately.

Pat Patterson leaves his Odessa drawl to Mrs. Grey, so that she won't be able to dictate so rapidly. He was going to leave his athletic trophies to Jeannie Powell, but dag-gone it, he forgot and took them with him.

I have tried to remember everything that my dear departed comrades told me to bequeath, but since my nerves have been shattered by the relentless sun and constant fear of death at the hands of my captors, it is quite possible that I have overlooked something. If so, I am truly sorry.

Signed, sealed, and embottled,  
JAMES SUTTON.

(There is also a postscript which says: "Horrors! I have gained five pounds, and I fear death is approaching. I have also grown a beard. J. S.")

This, then, has been the fate of the Senior Class of 1939. The information gleaned from this bottle has certainly justified the archaeological expedition, and the gathering together of interested parties tonight for the examining of this document. This class will probably be placed in history beside the names of the other famous martyrs who died on the firing line. Far from being fired, however, these poor souls lost their lives trying to get employment.

LARRY LANE.  
MARJE MOORE SWEENEY.

# McCHESNEY

## Sabiduria Photographer

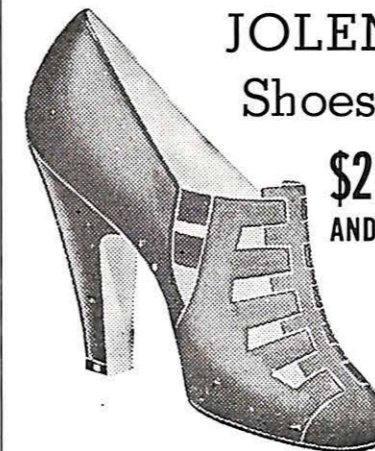
Photos of the better sort

Your friends can buy anything you  
can give them EXCEPT YOUR  
PHOTOGRAPH

# McChesney Studio

Marshall, Missouri

## Save at BIHR'S

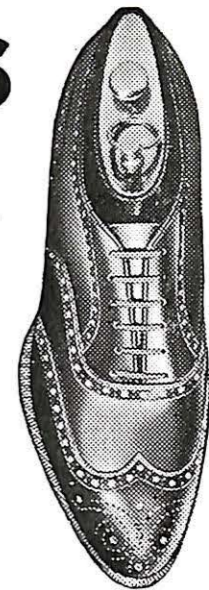


JOLENE  
Shoes

\$2.98  
AND UP

Freeman  
Shoes

\$5.00

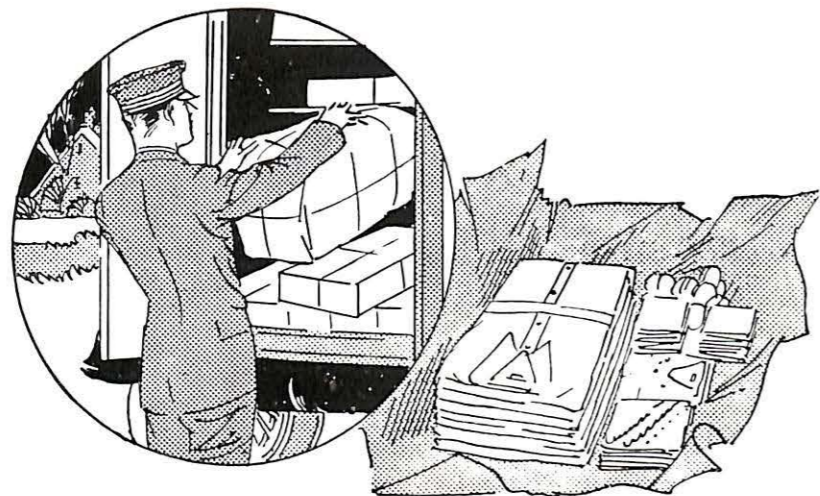


STETSON HATS

KAYSER HOSE

# BIHR SHOE STORE

EAST SIDE SQUARE



**MARSHALL LAUNDRY CO., INC.**

TAKES WASHDAY OUT OF YOUR  
**PHONE 209 :: HOME :: FRED DOANE, Mgr.**

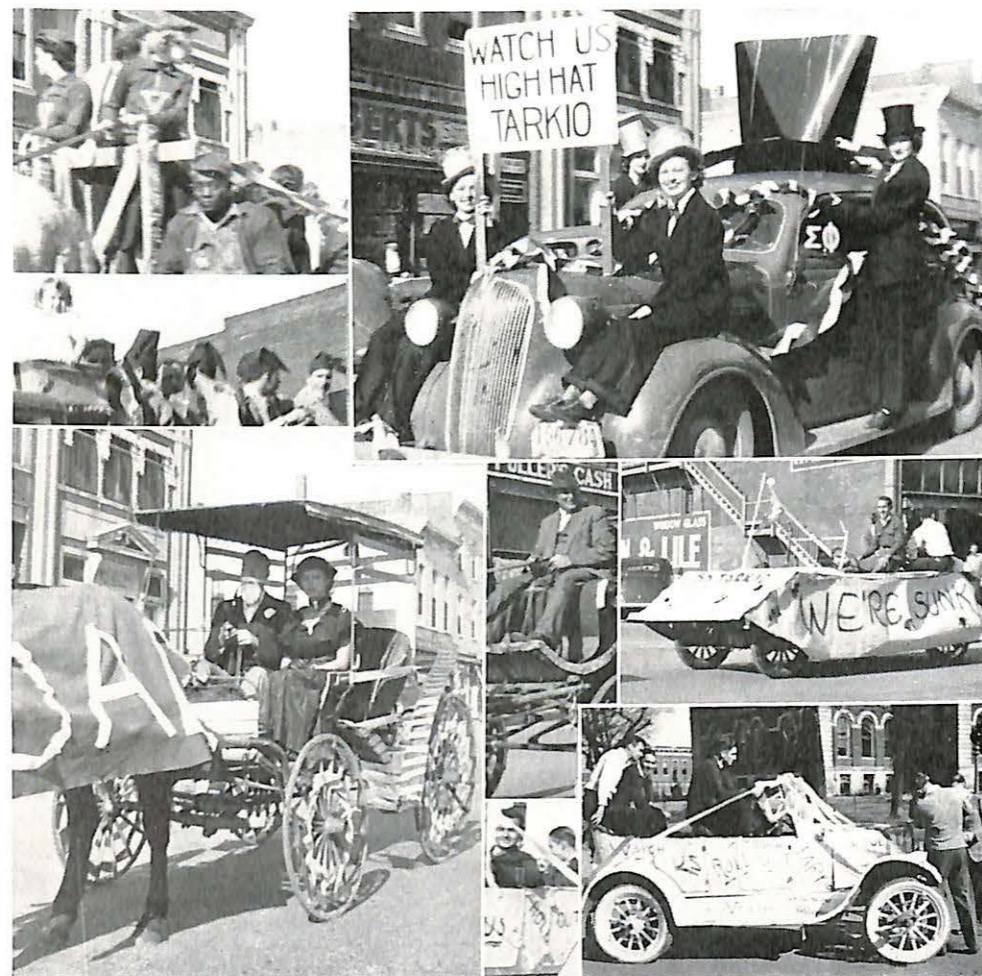
**Greetings to Missouri Valley College  
 from Missouri Valley Stores, Largest  
 Department Store in Central Missouri,  
 also our associate,**

**Vogue Apparel Shop** Carrying Complete Lines of

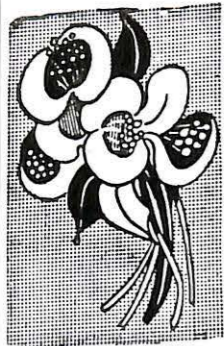
DRY GOODS    HARDWARE    FURNITURE    ACCESSORIES  
 CHILDREN'S CLOTHING    LADIES' READY-TO-WEAR  
 CHINA AND GLASS WARES

**MISSOURI VALLEY STORES**

# Homecoming



The Valkyrs were behind the "team" - - - We DID high-hat Tarkio  
 - - - Ann Pasek and the Seven Dwarfs - - -  
 Davis and Sill for dear old D. A. C. - - The D. K.'s rode in state - - "Remember the Maine"  
 "McGillicuddy" plays chauffeur - - - Lizzie got hot on the square



# Flowers

For All Occasions !!

We always have a complete stock of

- Flowers
- Corsages
- Potted Plants, and
- Choice Cut Flowers

Marshall  
Floral Company

PHONE 77

# Furniture Stoves and Rugs

We Accept Trade-Ins

**Scholle**  
Furniture Company  
119 North LaFayette  
MARSHALL, - - - MISSOURI

Dresses Suits Overcoats

- Modern Equipment
- Skilled Workmen

# Marshall Cleaners

Phone 56 120 N. LaFayette

EDDIE HANSBROUGH, Prop.

Insurance Covers Fire and Theft

Call for ONE DAY SERVICE

Hats Knits Gloves

# RUBY'S LUNCH

Telephone 1490

1 block South of Square on Jefferson

SHERWIN-WILLIAMS PAINTS  
and Imperial Washable Wallpaper

**Kenneth Allen's**  
106 E. Arrow Phone 1199

Fountain Service . . . . .

Drugs — Sundries — Prescriptions

**Hatcher Drug Co.**  
Phone 10

# Marshall Beauty Shop

Telephone 335

Over John T. Davis Drug Store

## HONORABLE MENTION

SINCE in this analytical age of blatant criticism, "Self-Help" books, and advertisements such as "Why are you a failure?" "Does your smile repel rather than attract?" etc., ad nauseam, our good qualities too often go unnoticed, so we thought it would be nice to call to your attention many of the personal traits which have helped to brighten our college year but have been for the most part unrecognized.

**Mrs. Burton's** genuine personal interest in everybody.

**Emily Scudder's** beautiful eyes and eyebrows.

**Barney LaSauce** knows everybody's birthday.

**Mattie** never loses her sense of humor even when she sees Campbell Hall smoking room.

**Dr. Malcolm's** seemingly unlimited patience with that Philosophy of Life class.

**Harriet Hoge** for her ability to take it and dish it out.

**Dr. Bibb** for the unassuming way in which he fulfills his duties.

**The Student Senate** for waking up to its responsibilities.

**Miss Thomas** for the way she has fitted into the scheme of things.

A blue ribbon goes to the Administration for lessening the compulsory Chapels and lowering the Religion requirements.

**Miss MacDonald's** unexpected remarks.

**David Eisenstein's** willingness to help out when you need help.

**Mrs. Evrard's** conscientiousness in tracking down data for students in the Library.

**Joan Stewart** for putting in a new fuse every time Campbell's lights go out.

**The Jones Boys** for being "good guys."

**Betty Carter's** speaking voice.

**Bettie Evans,** a good example of "dry" humor.

**Mr. Hartsook's** entertaining socks.

**Gail Jordan** for her classic features.

**Lee Olive Pritchard** for the way she helped Miss Vondracek.

**The Campus,** for being so pretty this spring.

**Dr. Johnson** for his swell athletic shots.

**Mr. "Believe It or Not" Ripley** for turning down U. S. C. to come to Valley for Commencement.



## Designed for Business and Professional Service

Our printing department can give you complete production, using modern papers and type faces.

Our stationery store is for your convenience in office necessities. A call will convince you that we are here to serve you in your commercial needs.

# Lambert Moon

## PRINTERS and STATIONERS

116 South Main St.

Phone CLifton 0789

Independence, Mo.



# CONTRASTS!

Dear Betty,  
I picked this page for the first. I'm hoping someday soon you will have one. I have had great fun in watching from my corner the progress and success of Betty. She has taken care of so many honors that I hardly see how one so small can carry such a load of honors around.  
I am glad, too, that we will have next year to struggle thru together. I hope Mr. & Mrs. will stay as it is - of course a few seniors must go, but they can always return to stay as long as we dare bid them from this important position.  
I am wishing the greatest and the best for Betty and Joe.  
- Guy

DIAMONDS! COAL! The same basic element . . . but what a difference! A million years lies between the two. One is sold by the carat, the other by the ton.

ENGRAVINGS! All made from the same base metal, copper or zinc. But what a difference there can be among them. Some are faithful, facsimile reproductions of your artwork, or your idea . . . the same life, brilliance, color and detail. Others are just pictures, with little else but a resemblance to the original.

YEARBOOK STAFFS of the middlewest are learning to depend upon the experience, skill and service of the YEARBOOK DEPARTMENT of . . . . .

# Holland Engraving Co. HA. 4553

1200 Candler Building

Kansas City, Missouri



● **EVERYTHING**  
the **BUILDER**  
**NEEDS**

**PHONE 137**

**Daniels Lumber Co.**

R. M. PHILLIPS, Manager



**Personal Loans to Salaried People**

MONTHLY PAYMENTS

*Make Our Bank Your Bank*

**WOOD & HUSTON BANK**

● MEMBER FEDERAL RESERVE SYSTEM

FRESH MEATS THE YEAR ROUND, ALSO FRESH  
VEGETABLES AND BERRIES KEPT IN A COLD  
STORAGE LOCKER HELP REDUCE THE COST OF  
LIVING.

**Marshall Ice, Storage & Fuel Company**

PHONE 31

Enjoy *Frozen Gold*

Manufactured by

**Missouri Ice Cream Co.**

Phone 777

MARSHALL, MISSOURI

**VAN DYKE & CO.**

LOANS  
INSURANCE  
ABSTRACTS

Dependable Insurance and  
Investment Service

Telephone 123

**Hail the**

*Golden Jubilee*

**Anniversary**

## Autographs

Roomo

Usually a person sits down, and writes a lot of stuff just to be writing something, but I want you to know that that is not the case with me this time.

I picked you out as a roommate, and sure do compliment myself with my choice. We've had some swell times together, and I sure have enjoyed kind of sitting back in my own dumb way, and watch you make progress ~~both~~ in leaps and bounds, both on the campus, and in Sigma Nu. Stick with it boy and you won't be sorry. Sigma Nu is going to need you and your kind bad next year. So see it through, and be a pal and drop me a line once in awhile, and let me know what's going on. Lots of Luck.

Fraternally  
Jack Fausser  
Also The Dutchman

## Autographs

Dear Betty Mae,  
Just think of a student  
hall and your world, write a  
book.

Dear Betty:

Best of everything and luck, success  
and happiness -  
J.F.

Betty Mae Fausser

Lots of luck to us.  
Joe.

Dear Betty Mae,

No foolin', Betty, I think you are one of the sweetest girls on M. V. C. campus, and I'm proud to call you a friend. You are mighty sweet, and I wish you the best of luck and happiness always. I see you this summer maybe, I hope!

Love,  
Cherry