

MISSOURI VALLEY COLLEGE



3 7010 00239666 7



MVC

378

Sa 1

1951

C. 7

SABIDURIA

MISSOURI · VALLEY · COLLEGE

1951

Your

Sabiduria

1951



Published by the Students of
MISSOURI VALLEY COLLEGE
Marshall, Missouri



In This Edition—

*Dedication
The President
Faculty
Seniors
Juniors
Sophomores
Freshmen
Activities
Athletics
Short Shootin*

9/51

38029

c.2



In sincere gratitude and unbeknown to him, we, of the Sabiduria staff, proudly dedicate this 1951 Sabiduria to Gordon H. Smith, director of public relations at Missouri Valley College from September, 1949 until April, 1951. Without his untiring efforts and cheerful counsel and advice, we feel the production of this year-book would have been impossible.

When Mr. Smith left the campus in April to accept another position in which he works for the public interest, the earnest good wishes of all Valley went with him. Mingled with the well-wishing, however, was a deep regret in losing a man who was not only an excellent craftsman in the field of public relations, but a close and personal friend of everyone with whom he had come in contact on the campus.



DR. M. EARLE COLLINS

In one brief semester, Dr. Collins made an impression upon the minds and hearts of the entire Missouri Valley community, faculty, staff, and students, that will linger in their memories of college days for many a year. His sincerity and straightforwardness of expression, his understanding, his deep convictions of the right, and, perhaps most of all, his warm friendliness made him known over the campus as the friend of everyone. Valley looks forward with anticipation and hope to a prosperous future under the administration of Dr. Collins.



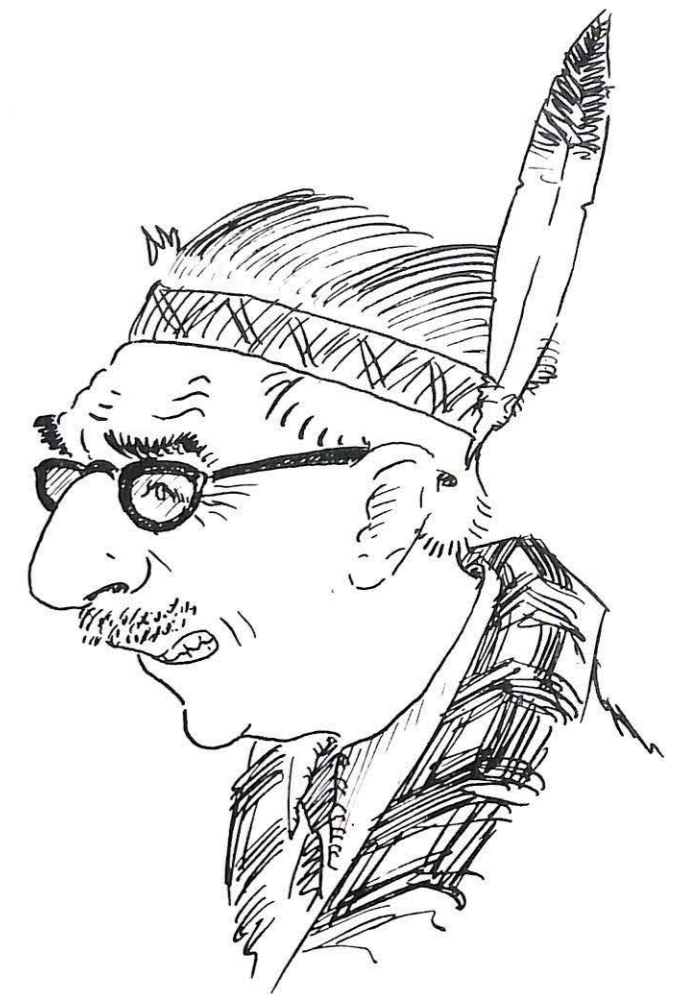
DR. H. ROE BARTLE
President of the Board of Trustees

"Dr. Bartle has another job." Banker, lawyer, newspaperman, active in the church, Boy Scout executive, farmer, lecturer—what more can any one man do within the span of one lifetime.

He resigned as president of Missouri Valley College, assumed the presidency of the board of trustees, and the majority of his close friends felt he would take it easy for a short time. But no—he was prevailed upon to work for the national government as Regional Price Administrator for a four state area. With this employment, he really did have another job.

However, with all of his many occupational efforts, we of Valley feel his true "labor of love" is right here in Marshall. Valley men and women are his friends, his enthusiasm for the Viking cause is limitless, and his work for the college is never-ending.

He's a big man in heart, spirit, and desire for Valley.



Faculty

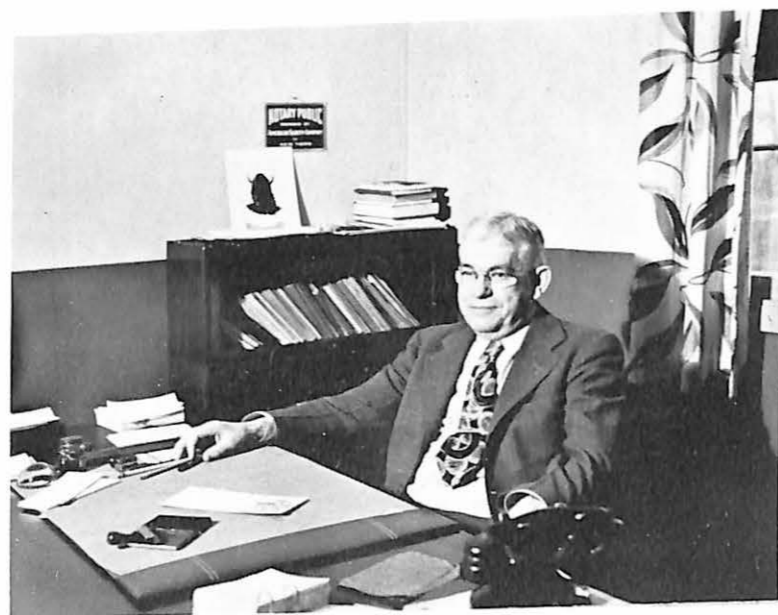




DR. G. DEWEY SMITH
Vice-President and Dean
Resigned, January 1, 1951



DR. ASA RUYLE, JR.
Administrative Assistant



E. L. PARSONS, Ph.D.
Treasurer and Business Manager



BYRON B. BANTA, M. A.
Dean of Men



STANLEY I. HAYDEN, M. A.
Registrar and Director of Admissions



LENA L. DAVISON, M. A.
Dean of Women

HAROLD E. AFFSPRUNG (M. A.)
Associate Professor Chemistry



VOLNEY C. ASHFORD (M. A.)
Director of Athletics
Professor Physical Education

ELIZABETH CAMPUZANO (M. A.)
Associate Professor of Spanish



MAMIE E. DUFFORD (B. Music)
Instructor in Music

RAY T. DUFFORD (Ph. D.)
Professor of Physics



NANCY LU DUGGINS (B. S. in Ed.)
Instructor in Physical Education

FRANCES H. ELLIOTT (M. A.)
Assistant Librarian



E. EUGENE ENGLE (M. A.)
Assistant Professor of Business
Administration

JEAN H. FAUROT (Ph. D.)
Professor of Philosophy
Director of Band



WM. I. FERGUSON (D. Sc.)
Professor of Mathematics

CLAUDE L. FICHTHORN (Mus. D.)
Professor of Music



EDWIN P. FISHER (M. A.)
Assistant Professor Business
Mathematics

REV. HARRIS T. HALL (B. S. : S. T. B.)
Instructor in English



ROWENA HARWOOD KELLY (B. S.)
Assistant Professor Speech and
Dramatics

CHRISTINE M. HAYO
College Nurse



W. HOBART HILL (M. A., M. R. E.)
Professor of Human Relations

C. GRATTON KEMP (B. D., Ed. D.)
Professor Speech
Director Guidance Center



ESTHER LIFFRING (J. D.)
Associate Professor Business
Administration

ROBERT M. LIGHTFOOT (M. S., B. L. S.)
Librarian



ROBERT S. LINNELL (M. B. A.)
Associate Professor Business
Administration
Head of Department

MARGARET M. McANINCH (M. A.)
Associate Professor English
and Classics



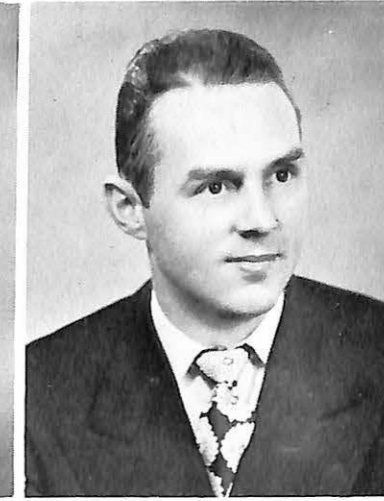
HERBERT E. MCKINNEY (A. B.)
Instructor Physical Education

NADINE W. OVERALL (Ph. D.)
Professor of English



HENRY C. PEPPER (Ph. D.)
Assistant Professor History

EVELYN POWELL (M. M. E.)
Assistant Professor in Music



ASA M. RUYLE JR. (Ed. D.)
Administrative Assistant
Professor of Education and
Psychology

MILDRED W. SAUPE (Ph. D.)
Professor Education and Psychology



REMINGTON SCHUYLER
Associate Professor Arts

GORDON H. SMITH (M. A.)
Assistant Professor Journalism
Director of Public Relations



JAMES C. SPALDING (B. D., Ph. D.)
Professor of Religion

WYLIE F. STEEN (B. D.)
Alumni Secretary



J. H. STELLWAGEN (Ph. D.)
Professor of Modern Languages

C

BRUCE STEWART (M. A.)
Assistant Professor of Biology



EASTON STUHR (M. A.)
Instructor in English

F

LAWRENCE C. THOMAS (Ph. D.)
Professor of Biology



REV. ROBERT S. WAGGONER
(A. B., Th. B., M. Ed.)
Instructor in Education

M

RODNEY WELLS (M. A.)
Assistant Professor History



A. C. ZUMBRUNNEN (M. A., D. D.)
Professor of Sociology

N

CLEO CAMPBELL
Director Campbell Hall



MINNIE T. REID
Director of Young Hall



BELLE CAMPBELL HUFF
Literary Doctor

What makes a college great? Obviously students, buildings, activities, spontaneous get-togethers, and professors who indelibly leave their mark on the minds of students who have been exposed to the philosophies and pet theories of the pedagogues. Invariably subject matter is forgotten, details slip from mind, but the personality of the teacher remains for life.

Dr. Huff returned to the teaching force this fall after an absence of one school year. Immediately the campus buzzed with her sayings, requirements, as amazed students repeated in deep respect the seemingly endless amount of knowledge possessed by this true student of the classics.

Penelope, Ulysses, Dante, Confucius, Boccaccio and Zeus will come back to mind with effort, but the help, guidance, and rich personal life of Dr. Huff will always be a permanent memory in the mind of every Viking who studied under her.



RAY HAYOB, A. B.
Assistant Treasurer and Business Manager

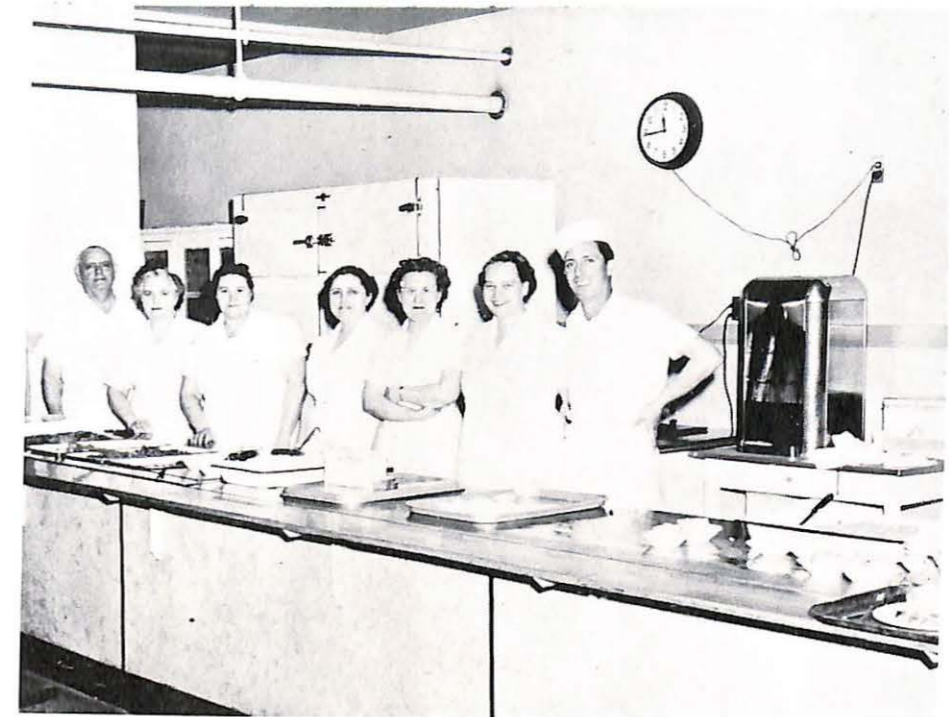


Virginia Tabor and JoAnn Brisley



Grace Penn, Ann Johnson, Louetta Pearson, Mae Bacon, Dorothy White

CAFETERIA STAFF



Mr. Quisenberry, Mrs. Quisenberry, Minnie Short, Mrs. Howery,
Ruby Borgman, Leona Davis, J. B. Moore

SNACK BAR



Ralph Wienke, book store manager; Mrs. Hughes, Mrs. King



Faculty Trio Butchers Opera



Howdy



Chorus Girls



Hot Harmonicat



Cadahol Booster





RICHARD ABENSTEIN
Chicago, Illinois
Major: History



JAMES H. AMOS
Chicago, Illinois
Major: Business Administration
Sigma Nu, 3



JANE ARONSON
Hibbing, Minnesota
Major: Economics
Alpha Xi Delta, 3, 4
W. S. G. A. Council, 4



MERLE BERLIN
Marshall, Missouri
Major: History
Alpha Sigma Phi, 4
Student Senate, 4



ELEANORE L. BESS
Sedalia, Missouri
Major: Public School Music
Delta Zeta 1, 2, 3
Corresponding Secretary 4
Davidsbundler 3, 4
Y. W. C. A. 1, 2
Orchestra 1, 2, 3
May Queen 3
Vesper Choir 2, 3
Pan Hellenic Council 2, 3, 4



WILLIAM J. BIRCH
Slater, Missouri
Major: Education
Sigma Tau Delta, 4



O. JUNIOR ASHINHURST
Marshall, Missouri
Major: Business Administration
Commerce Club, 3, 4
Baseball, 1
Intramurals, 1, 2, 3, 4



EVERETT K. BACON
Erie, Pennsylvania
Major: Human Relations
Alpha Phi Omega, 1, 2, 3, 4
Delta, 3, 4
Humanics Club, 2, 3, 4
Transferred: University of Missouri



RICHARD A. BEISSENERZ
Wellington, Missouri
Major: Physical Education
V Club, 3, 4
Basketball, 2, 3, 4



AUDRAE MAE BREDBERG
Chicago, Illinois
Major: Physical Education
Alpha Xi Delta 4
Valley Players 4
W. A. A. 1, 2, 3, 4
Alpha Psi Omega 3, 4
Cheerleader 1, 2, 4
Band 1, 2, 3
Delta 2, 3
Gamma Upsilon 3, 4
Pep Club 1, 2
Sabiduria 3



PERRY MAC BROOKS
Marshall, Missouri
Major: Business Administration
Sigma Nu, 1, 2, 3, 4
V Club, 4
Football, 1, 2, 3, 4



DONALD M. BROWN
Holden, Missouri
Major: Physical Education
Basketball, 3, 4
V Club, 3, 4
Transferred: Warrensburg, 3



ROBERT B. CAMPBELL, JR.
Slater, Missouri
Major: Chemistry
Student Affiliate American
Chemical Society
Transferred: Central College



MARY M. CARROTHERS
Oak Park, Illinois
Major: Physical Education
Alpha Xi Delta 1, 2, 3;
Corresponding Sec. 4
W. A. A. 1, President 2, 3, 4
Student Senate 3
Who's Who 3
W. S. G. A. 3, President 4
Y. W. C. A. 1, 2
Homecoming Attendant 3
Pep Club 1, 2
Band 1, 2
Pan Hellenic Council 3
Valley Players 4
Student Assistant P. E. Dept. 3



BLUE ALLAN CARSTENSON
Kansas City, Missouri
Major: Human Relations
Student Christian Ass'n. 2, 3, 4
Alpha Phi Omega 1, 2, 3
Cheerleader 2
Delta 2, 3
Gamma Upsilon 3, 4
Men's Glee Club 1, 2
Band 2, 3
Transferred: Drexel Institute of
Technology 2



LEWIS H. DUNLAP
Rolla, Missouri
Major: Religion



RANDOLPH P. FALVEY
Chicago, Illinois
Major: Human Relations
Alpha Phi Omega, 2, 3, Treas. 4
Alpha Psi Omega, 3, 4
Gamma Upsilon, 3, 4
Valley Players 2, 3, Vice Pres., 4
Delta, 2, 3, 4
Student Senate Social Life Com. 2, 3, 4
S. C. A., 3, 4



DELMER A. FIDLER
Marshall, Missouri
Major: Chemistry
Men's Glee Club, 4
Science Club, 3, 4
Chemistry Laboratory Assistant 3, 4



WILLIAM E. CARTER
Marshall, Missouri
Major: Science
Vesper Choir, 4
Men's Glee Club, 4



MARTHA ELLEN COLE
Chicago, Illinois
Major: Spanish, Biology
Gospel Team, 3, 4
Dramatic Arts Club, 3
Transferred: Kansas City Junior
College, 3



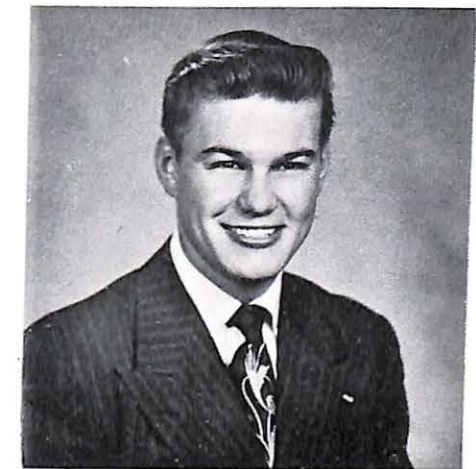
ROBERT H. COMPTON
Cameron, Missouri
Major: Biology



DONALD E. FIELD
Marshall, Missouri
Major: Business



WALKER C. FLETCHER, JR.
Marshall, Missouri
Major: Business
Commerce Club, 3, 4
Valley Players, 4



ARTHUR L. FRENCH
Casper, Wyoming
Major: Human Relations
Alpha Phi Omega 3, 4
Intramurals 3, 4
Humanics Club 3, 4
Transferred: University of Wyoming 3



DORIS GERHARDT
 Kansas City, Missouri
 Major: English
 Delta Zeta 2, Rec. Secy. 3, Pres. 4
 Y. W. C. A. 1, 2
 Vesper Choir 2
 W. A. A. 1, 2, 3
 Pi Gamma Mu 4
 Sigma Tau Delta 3, Vice-Pres. 4



LENORA HAINS
 Marshall, Missouri
 Major: Speech
 Sigma Tau Delta, 4
 A Capella Choir, 2, 3
 Vesper Choir, 2, 3
 Chapel Choir, 3
 Valley Players, 4



HARRY HAYES
 Marshall, Missouri
 Major: Physical Education



CHARLES A. HUFF
 Burlington, Kansas
 Major: Human Relations
 Alpha Phi Omega 3, 4
 Student Christian Association 3, 4
 Pi Gamma Mu 4
 Gamma Upsilon 3, 4
 Transferred: Kansas State College 3



E. J. HUSKEY
 Mexico, Missouri
 Major: Business Administration
 Commerce Club, 4
 Student Senate, 4
 Transferred: Hannibal LaGrange
 College, 2



GEORGIA ANN JACOBSON
 Kansas City, Missouri
 Major: Nursing
 Transferred: St. Luke's Hospital 4



JAMES EARL HERBON
 Evanston, Illinois
 Major: Business Administration
 Sigma Nu 2, 3, 4
 Delta 2, Editor 3
 Sabiduria 3
 Secretary Senior Class 4
 Gamma Upsilon 3, 4
 Transferred: Evanston Community
 College 2



ROBERT J. HISLE
 Miami, Missouri
 Major: Business



LOIS FRANCES HOUGH
 St. Louis, Missouri
 Major: Human Relations
 Alpha Xi Delta 1, Correspondent 2, 3,
 President 4
 W. A. A. 1, Secretary 2, Vice-Pres. 3, 4
 Y. W. C. A. 1, 2
 Student Social Committee 2, 3
 Delta 1, 2
 Sabiduria 3, Editor 4
 Beta Beta Beta 3, Historian 4
 Gamma Upsilon 3, 4
 Pep Club 1, President 2
 Pan Hellenic 2, 3, 4
 Who's Who 3, 4



FRANK J. KAISER
 Fulton, Missouri
 Major: Education



GEORGE ROBERT KERN
 Marshall, Missouri
 Major: Commercial Education



LELAND A. KERR
 De Soto, Missouri
 Major: Business Administration
 Student Social Committee 1, 2
 Gospel Team 1
 Commerce Club 3, 4
 Student Assistant Economics
 Department 3, 4



ROSALIE C. KILP
Miami, Missouri
Major: Biology
A Capella Choir 1, 2, 3
Cheerleader 3, 4
Beta Beta Beta 3, Vice-Pres. 4
W. A. A. 1, 2, 3, Secretary 4
Intramurals 1, 2, 3, 4
May Queen Attendant 3



EARNEST O. KRUEGER
University City, Missouri
Major: Religion
Alpha Phi Omega, 2, 3, 4
Chi Alpha, 1, 2, President, 3, 4
S. C. A., 3, 4



MARTHA ANN LAMAR
Weston, Missouri
Major: Biology
Y. W. C. A., President 2
Gospel Team 1, 2, 3, 4
Beta Beta Beta 3, Secretary 4
W. A. A. 1, 2, President 3, 4
Student Senate 4
W. S. G. A. 3, 4



FRANK CHARLES LIGGETT
Kansas City, Missouri
Major: Education
Alpha Phi Omega, 2, 3, 4
Alpha Sigma Phi, 3, 4
Intramurals, 3, 4
Transferred: Kansas City Junior
College, 2



LOUIS G. LINN
Kansas City, Missouri
Major: Human Relations
Alpha Phi Omega 3, Rec. Secy. 4
Student Christian Assn., 3, Treas. 4
Men's Glee Club 3
Pi Gamma Mu 4
Delta Business Manager 4
Transferred: The Citadel 3



CHRISTINE LOCKRIDGE
Hardin, Missouri
Major: Biology
Band 1
Y. W. C. A. 1
Student Senate 4
W. S. G. A. 3, 4
Science Club 4
Beta Beta Beta 3, President 4



LYLE W. LARCHEID
Milwaukee, Wisconsin
Major: Human Relations
Alpha Sigma Phi 4
Alpha Phi Omega 3, 4
Men's Glee Club 3
Gamma Upsilon 3, 4
Delta 3, 4
Sabiduria 4
Valley Players 4
A Capella Choir 3
Intramurals 3, 4
President New Dorm 4
Transferred: Marquette University 3



DEAN S. LESLIE
Kansas City, Missouri
Major: Music
A Capella Choir, 3, 4
Male Glee Club, 4
Vesper Choir, 3, 4



JOHN R. LEWIS
Kansas City, Missouri
Major: Human Relations
Sigma Nu 3, Treasurer 4
Alpha Phi Omega 3, 4
Student Christian Association
Treasurer 3
Men's Glee Club 3
Intramurals 3, 4
Sabiduria 4
Transferred: Kansas City Junior
College 3



FREDERICK LOVERCAMP
Sweet Springs, Missouri
Major: Education
Alpha Phi Omega, 1, 2



BETTY A. LUCAS
Chicago, Illinois
Major: Education
Alpha Xi Delta 1, 2
Vice-President 3, 4



GEORGE C. LUETHGE, JR.
St. Louis, Missouri
Major: Chemistry
Laboratory Assistant in Physics, 4
Men's Glee Club, 3
Student Christian Association, 4



ROBERT MAGUIRE
Chicago, Illinois
Major: Chemistry



BRUCE L. MCKENZIE, JR.
St. Paul, Minnesota
Major: Human Relations
Alpha Phi Omega 3, 4
Delta 3
Humanics Club 3, 4
Intramurals 3
Transferred: University of Minnesota 3



JOHN W. MOORE
Macon, Missouri
Major: Business Administration
Sigma Chi 1, 2
Football 3, 4
Commerce Club 4
Transferred: Kirksville State 3



CHARLES A. PEARSON
Garfield, Kansas
Major: Human Relations
Tau Kappa Epsilon 1, 2
Alpha Phi Omega 3, 4
V-Club 3, 4
Pi Gamma Mu 4
Delta 3
Tennis Team 3, 4
Transferred: Fort Hays State
College 3



BETTY PETTIBONE
St. Louis, Missouri
Major: Nursing



EARLE J. W. PRONGER II
Blue Island, Illinois
Major: Business
Sigma Nu 3
Alpha Phi Omega 4
Alpha Psi Omega 4
Gamma Upsilon 3, 4
Student Senate 4
Delta 3, 4
Valley Players 3, 4
Transferred: Northwestern
University 3



HOMER N. NELSON
Boody, Illinois
Major: Mathematics
Football 1, 2, 3, Co-Captain 4
Track 1, 2, 3, 4
Basketball 4
Senior Class President
Junior Class Vice-President
Who's Who 4
Black Hall President 3, 4



JOHN M. NOLTE
Clinton, Missouri
Major: Psychology
Alpha Phi Omega 1, 2, 3, 4
Delta 1, 4
Valley Players 1, 2, 4
Band 1, 2, 3, 4
Student Assistant Psychology
Department 3, 4



ALLAN W. OGDON
Oak Park, Illinois
Major: Education
Cheerleader 1, 2, 3, 4
Student Senate 4
Alpha Phi Omega 2



MARCEYNE SASS RASMUSSEN
Spencer, Iowa
Major: Speech
Valley Players 4
Alpha Psi Omega 4
Transferred: Iowa State Teachers
College 4



TRUE E. ROBBINS, JR.
Kansas City, Missouri
Major: Human Relations
Alpha Phi Omega 1, 2, 3, Pres. 4
Transferred: Rockhurst College 3



WILLIAM D. ROBERTS
Marshall, Missouri
Major: Business Administration



WILLIAM L. ROSE
Wilmette, Illinois
Major: Business Administration
Alpha Phi Omega, 1, 2, Treas. 3, 4
Commerce Club, 3, 4



JOSEPH F. RUBINO
Chicago, Illinois
Major: Physical Education
Intramurals 1, 2, 3, 4



LUKE SCAVUZZO
Harrisonville, Missouri
Major: Business Administration
Football 3, 4
All Conference 4
V-Club 3, 4
President Business Club 4
Secretary-Treas. Senior Class
Who's Who
Transferred: Missouri University 2



WILLIAM F. SMITH, JR.
St. Louis, Missouri
Major: Business Administration
Sigma Nu 1, 2, 3, 4



KENNETH ADAMS SOXMAN
Kansas City, Missouri
Major: Mathematics
Who's Who, 4
Football, 2, 3, 4
Tennis, 2, 3, 4
S. C. A., 3, 4
V-Club, 2, 3, President 4
Secretary Junior Class
Men's Glee Club



MARVIN "JUICY" SPRIGG
Marshall, Missouri
Major: Physical Education
Football, 1, 2, 3, 4
Baseball, 1, 2
Intramural Sports, 1, 2, 3, 4
V-Club, 4



RICK SCHEELE
Elgin, Illinois
Major: Speech
Alpha Phi Omega, 2, 3, 4
Alpha Psi Omega, President, 3, 4
Valley Players, 2, 3, Pres. 4



EARL A. SHAW
Meade, Kansas
Major: Education
Alpha Sigma Phi 3, 4
Alpha Phi Omega 1, 2, Vice-Pres. 3,
President 4
Student Senate 4
Student Christian Association 3
Transferred: Kansas State College 3



RICHARD ALAN SLAUGHTER
Evanston, Illinois
Major: Business Administration
Sigma Nu 2, 3, Commander 4
Intramurals 3, 4
Commerce Club 3
Vice-President Senior Class
Transferred: Depaul University 2



CHARLES PETER STADE
Bellwood, Illinois
Major: Human Relations
Alpha Sigma Kappa 1, 2
Cheerleader 3, 4
Alpha Phi Omega 3, 4
Humanics Club 3, 4
Intramurals 3, 4
Transferred: Lake Forest College 3



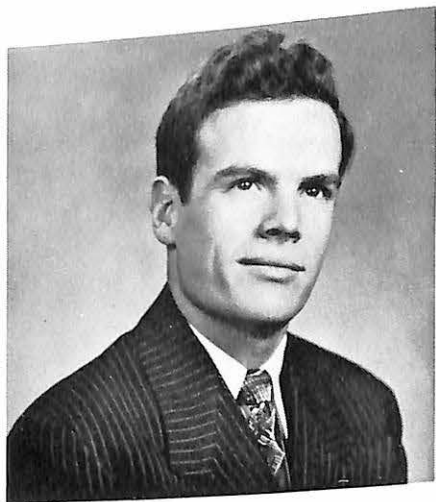
CARL BAUSCH STANLEY
Evanston, Illinois
Major: Business Administration
Sigma Nu 1, 2, 3, Commander 4
Commerce Club 3, 4



WILLIAM B. SWINDLE
Parkville, Missouri
Major: Human Relations
Sigma Alpha Epsilon 1, 2, 3
Delta 4
Alpha Phi Omega 4
Humanics Club 4
Transferred: Iowa State 4



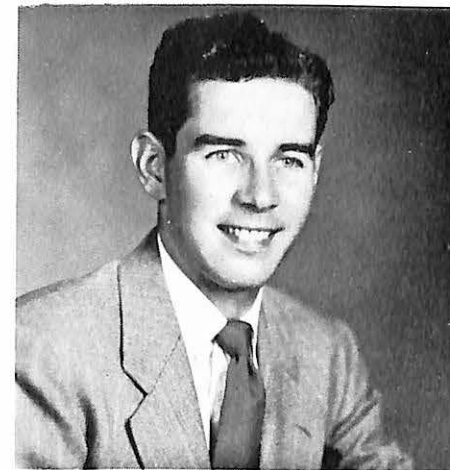
BERT C. TABOR
 Minneapolis, Minnesota
 Major: Human Relations
 Alpha Phi Omega,
 Recording Secretary, 3, 4
 Gamma Upsilon, 3, 4
 Pi Gamma Mu, 4
 Delta, 3, 4, Business Manager
 Who's Who, 4



JERRY L. TURNER
 Bondurant, Iowa
 Major: Human Relations



ROBERT M. TWILLING
 Marshall, Missouri
 Major: Business Administration
 Tau Kappa Epsilon 1, 2
 Commerce Club 3, 4
 Transferred: Washington University 3



JAMES P. WHITWORTH
 Marshall, Missouri
 Major: Social Studies
 Sigma Tau Delta, 4
 Transferred: Southwest Baptist
 College, 3



PATRICIA LOUISE WHITTAKER
 Barnett, Missouri
 Major: History
 Pi Gamma Mu, 3, President 4
 W. A. A., 1, Treasurer, 2
 Y. W. C. A., 1
 Intramural Sports
 Who's Who 4



JOHN G. WHYTE
 Joliet, Illinois
 Major: Human Relations
 Sigma Nu, 3, 4
 Alpha Phi Omega, 3, 4
 Gamma Upsilon, 3, 4
 Humanics Club, 3, 4
 Delta Staff, 3, 4



CATHERINE ANN VAUGHN
 Marshall, Missouri
 Major: Commerce
 Transferred: Central Missouri
 State College, 3



SHIRLEY JEAN WHEELER
 Chicago, Illinois
 Major: History
 Delta Zeta 2, Vice-Pres. 3, Treas. 4
 Y. W. C. A. Secretary 1
 W. A. A. 4



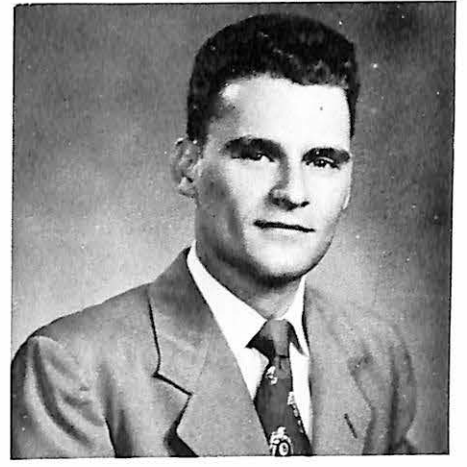
LEO E. WHITE
 La Feria, Texas
 Major: Education



E. ALAN WILHITE
 Belton, Missouri
 Major: Business
 Alpha Phi Omega 1, 2, 3, 4
 Vesper Choir 1, 2, 3
 A Capella Choir 1, 2
 Commerce Club 3, 4
 Hoffhite Quartette 1, 2, 3



LEE A. WILHITE
 Belton, Missouri
 Major: Human Relations
 Alpha Phi Omega, 1, Rec. Sec. 2, 3, 4
 Men's Glee Club, 3
 A Capella Choir, 1, 2, 3
 Vesper Choir, 1, 2, 3
 Chapel Choir, 1, 2,
 Student Christian Association, 4



ROBERT W. WINDMEIER
 Marshall, Missouri
 Major: Business



ED WINDSOR
 Kansas City, Missouri
 Major: History
 Sigma Nu Recorder 3, 4
 House Manager 4
 Student Social Life Committee 4



E. K. "BUD" WYCKOFF
 Brownsville, Texas
 Major: Business Administration
 Commerce Club, 3, 4
 Transferred: Kansas City University, 2



FRANK HAYNES SLEEPER
 La Grange, Illinois
 Graduate Student



HAROLD G. THAYER
 Marshall, Missouri
 Graduate Student



RALPH E. WIENKE
 Danville, Illinois
 Graduate Student



RICHARD E. YOUNGER
 Marshall, Missouri
 Major: Art
 Sigma Nu 4
 Valley Players 4
 Transferred: Kansas City Art
 Institute 4



MILDRED ZAVREL
 Lincolnwood, Illinois
 Major: Education
 Alpha Xi Delta 3, 4
 Cheerleader 1, 2
 Student Senate 3
 W. S. G. A. 3, Vice-President 4
 Junior Class Queen
 Harvest Queen Attendant 3



LUKE SCAVUZZO



PATRICIA WHITTAKER



KENNETH SOXMAN

Who's Who

Character, scholarship, leadership and possibility of future success were the bases of selection of six Missouri Valley seniors into membership in "Who's Who in American Universities and Colleges."



BERT TABOR



LOIS HOUGH



HOMER NELSON



FOREST G. ARNALL
Kansas City, Missouri



BILL W. AUSTIN
Independence, Missouri

GEORGE BRAHM
Mason City, Iowa



LOUISE BRINK
Marshall, Missouri

BILL BROOKOVER
Eureka, Kansas



MEREDITH CARTER
Marshall, Missouri

ROBERT S. CHOCKLEY
Rockford, Illinois



KEITH CHRISMAN
Indianapolis, Indiana

DAN CRABTREE
Portsmouth, Ohio



DAVID DAUTENHAHN
Cuba, Missouri

JOHN DYER
Marshall, Missouri



VIRGINIA DYSART
Marshall, Missouri

NEIL ELMER
Jefferson City, Missouri



JACK FEE
Evanston, Illinois

DAN FERGUSON
Amarillo, Texas



JAMES FITZPATRICK
Carrollton, Missouri

JOE FOWLER
Harrisonville, Missouri



ARMAND GOLDANSKY
Kansas City, Missouri

STEVE HARRIS
Chicago, Illinois



JEANETTE HICKMAN
Malta Bend, Missouri

JIM HUTCHISON
Mason City, Iowa



BARBARA JENSEN
St. Louis, Missouri

NEWELL JOHNSON
Chicago, Illinois



ROBERT A. JOHNSON
Rockford, Illinois

DOROTHY JONES
Oak Park, Illinois



BILL KAISER
Harrison, New York

GERALD KILP
Miami, Missouri



WILLIAM KING
Marshall, Missouri

BARBARA LAY
Knob Noster, Missouri



JOHN MALONEY
Evanston, Illinois

ED MATTHEEUSSEN
Oak Park, Illinois



RUTH MATHENY
Marshall, Missouri

BOB MEINHOLTZ
Buffalo, New York



BOB MOORE
Lee's Summit, Missouri

RICHARD MOORE
Lee's Summit, Missouri



CAROL MUEHLENBROCK
St. Louis, Missouri

DAVE MUELLER
Waukesha, Wisconsin



JOHN MULLINAX
St. Joseph, Missouri

DEAN NELSON
Red Oak, Iowa



BOB NICHOLS
Pittsburg, Kansas

PARKS OLMON
Denton, Texas



LEO PARLETT
Labette, Kansas

ED PENN
New York, New York



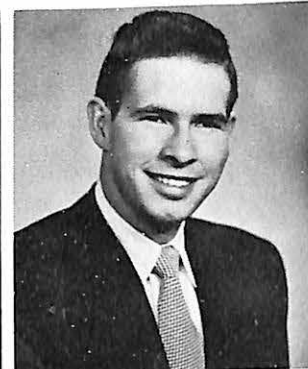
VERLYN PHILLIPS
Altmont, Kansas

DOROTHY PITTENGER
Bellflower, Missouri



HARRY PLATE
Evanston, Illinois

DOROTHEA ROSCHER
Marshall, Missouri



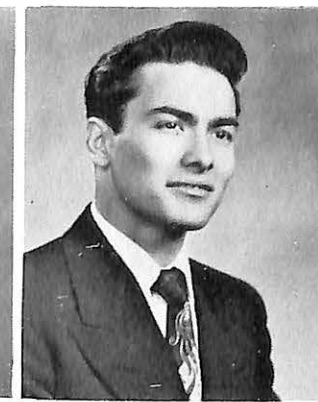
FRANKLIN ROSCHER
Marshall, Missouri

BOB SANNEMAN
East St. Louis, Illinois



FRITZ SCHUPP
Blackwater, Missouri

FRED SCHWEIGERDT
Chicago, Illinois



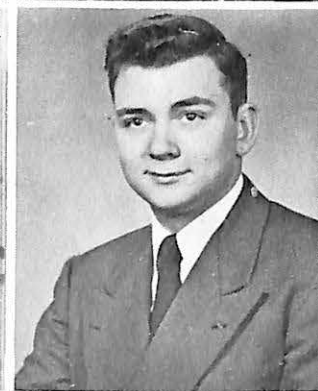
JIM SHEETS
Kansas City, Missouri

VAN SIGMAN
Marshall, Missouri



EARL STAIR
Harrisonville, Missouri

BOB STEELE
Kansas City, Missouri



NORMAN SWAILS
Clarksdale, Missouri

ROBERT THOMAS
St. Louis, Missouri



GIL THOMPSON
Watertown, Minnesota



KEN WADDELL
Grandfield, Oklahoma

Careers Day



ROGER AMIDEI
Highland Park, Illinois



EDWIN BLACK
Slater, Missouri



W. C. BLANKENSHIP
Sedalia, Missouri



BUDDY BYBEE
Marshall, Missouri



RUTH CAGG
Rolla, Missouri



ALLAN CARROLL
Excelsior Springs, Missouri



JOHN CARVER
Western Springs, Illinois



KENNETH DAVIS
Jerome, Idaho



PETER DeLUCA
Forest Park, Illinois



LYLE DILLEY
Plover, Iowa



RALPH DuSOLD
Berwyn, Illinois



TAHSEEN B. EL-AM'ARY
Damascus, Syria



SHIRLEY FALER
Kansas City, Kansas



FRED GRIMES
Cameron, Missouri



GEORGE HEIM
Milwaukee, Wisconsin



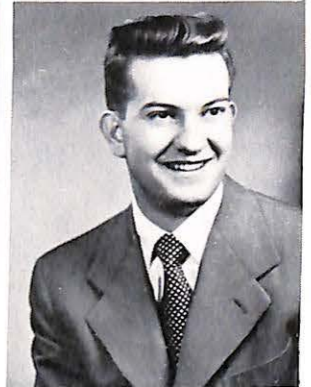
MARILYN DYSART
Independence, Missouri



DON ERWIN
Urich, Missouri



RUSSELL GILMORE
Sweet Springs, Missouri



FRED HANNA
Holden, Missouri



PAT HOUSTON
Garden City, Kansas



ROSEMARY HUESGEN
Marshall, Missouri



HERB ILES
Lexington, Missouri

BOB JENSEN
St. Louis, Missouri



PAT JOHNSON
Higginsville, Missouri

DOROTHY KEIRN
Upland, California



HOWARD LEE
Greenwood, Missouri

J. O. MARKLAND
Holden, Missouri



BETTY MATTHES
Kansas City, Missouri

BILL MELLIS
St. Louis, Missouri



FRANKLYN E. MEYER, JR.
St. Louis, Missouri

RICHARD MEYER
Independence, Missouri



CARL MILLER
Raleigh, Illinois

JIM MOHRMAN
Fulton, Illinois



GEORGE MOORE
Philadelphia, Pennsylvania

WARD MOORE
Macon, Missouri



FERN MORGAN
Marshall, Missouri

DOROTHY McFARLAND
Marshall, Missouri



BOB McQUIDDY
Marshall, Missouri

BILL NAPTON
Marshall, Missouri



EVERETT PEEL
Ennis, Texas

JANE PETCHELL
Kansas City, Missouri



JAMES PLATE
Evanston, Illinois



CECIL PLESSINGER
Cheyenne Wells, Colorado



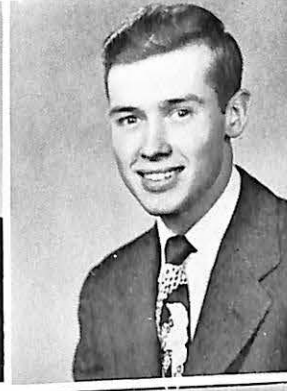
ROLAND RHOADES
Marshall, Missouri



ROBERT L. RISSLER
Sedalia, Missouri



OLIVER E. ROSE
Alton, Illinois



OMER RUNYAN
Aurora, Indiana



RICHARD SAATHOFF
Marshall, Missouri



CHARLES SHANKLIN
Kansas City, Missouri



MARY ANN SHUMATE
Richmond, Missouri



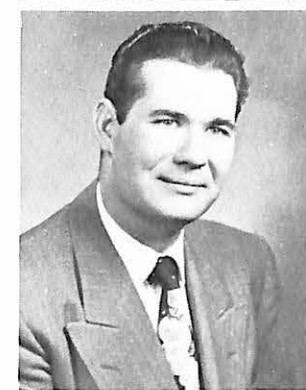
C. J. SIMMONS
Kansas City, Missouri



CAROL SKAGGS
Kansas City, Missouri



WILLIAM J. SMITH
Des Moines, Iowa



LELAND SMITH
Collins, Missouri



BARBARA STEERS
Platte City, Missouri



DAVID STONE
Independence, Missouri



DALE VANSELOW
Park Ridge, Illinois



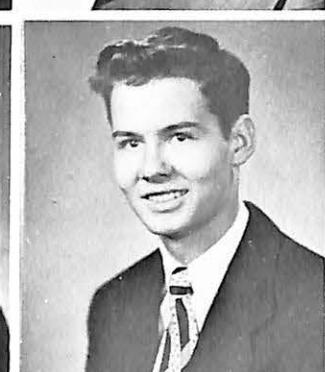
GENE VIERA
Clayton, Missouri



KATHRYN VOGEL
Marshall, Missouri



ROGER WALL
East St. Louis, Illinois



BARBARA WEAVER
Independence, Missouri



MILTON WENSEL
St. Louis, Missouri

BAKER WILHELM
Bosworth, Missouri



CHET WILLIAMS
Holden, Missouri

GERALDINE WILLIAMS
Kansas City, Missouri



ANN WYRICK
Marshall, Missouri



ROBERT G. ANDERSON
Northampton, Massachusetts



WILLIAM D. BAMMAN
Macon, Missouri

HENRY C. BARTELS
Wood River, Illinois



JAMES W. BARTLETT
Minneapolis, Minnesota

TOM BERNERO
Brentwood, Missouri



DON J. BORNGESSER
St. Joseph, Missouri

NANCY JANE BRISLEY
Marshall, Missouri



ROBERT M. BROWNING
Davenport, Iowa

BOB BUEKER
Marshall, Missouri



JOHN A. CARRELLA
Niagara Falls, New York

DEE CARSTENSON
Kansas City, Missouri



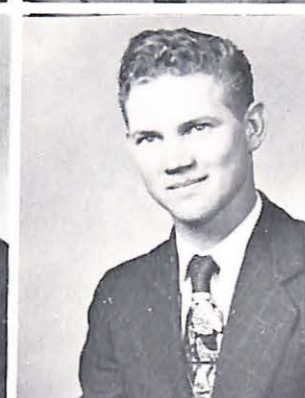
RAY CHASTEEN
Mountain Grove, Missouri

KEITH CORKRAN
Hickman Mills, Missouri



FRED COWEN
Marshall, Missouri

EUGENE CTIBOR
Czechoslovakia



TIMOTHY G. DAUTENHAHN
Cuba, Missouri

ROBERT E. DAY
Dayton, Ohio



VERTON DURRETT
Marshall, Missouri

NEIL J. FEATHERSTONE
Alton, Illinois



SUZANNE FISHER
Marshall, Missouri

TOYOMASA FUSE
Japan



RALPH GERHARD
Marshall, Missouri

ALICE GILHAM
Oklahoma City, Oklahoma



PEGGY HALL
Marshall, Missouri

ROBERT B. HALL
Kansas City, Missouri



BOYD C. HAMM
Union, Iowa

MARY RUTH HARRISON
Marshall, Missouri



DAVID M. HARRIS
Webster Groves, Missouri

LARRY HANNER
Elkhart, Illinois



ROBBIE HAWKINS
Marshall, Missouri

HERB M. HERTIER
Dupree, South Dakota



ROBERT D. HIGGINBOTHAM
Malden, Missouri

DON JONES
Mt. Prospect, Illinois



RONALD KNIGHT
Oklahoma City, Oklahoma

HELEN JO KNORPP
Pleasant Hill, Missouri



CAROLYN LOUISE LENTZ
Osage City, Kansas

JOY ELAINE LITTLE
Marshall, Missouri



ROBERT L. LIVINGSTON
Marshall, Missouri

JOE MAC LOWE
Lee's Summit, Missouri



AL MEYER
New Florence, Missouri

GLENNA JO MILLER
Amarillo, Texas



DIANA L. MOORE
Osborn, Missouri

ROSE MORGAN
Lebanon, Missouri



ROBERT E. MORISSEAU
St. Louis, Missouri

CARL W. MOYER
Des Plaines, Illinois



ANDREW R. MURPHY
Oak Park, Illinois

HAROLD J. MYERS
Bowling Green, Missouri



ROBERT D. NICHOLSON
Dallas, Texas

FRED H. NOBLE
Kirksville, Missouri



RUSSELL PARKER
Lee's Summit, Missouri

CLARA LEE PEDERSON
Greenwood, Missouri



JOSEPH R. PHELAN
Albuquerque, New Mexico

SALLY ANN PORTER
Rolla, Missouri



RACHIEL JANE PUYEAR
Richmond Heights, Missouri

ELMO F. RAVENSCRAFT
Macon, Missouri



PHIL REID
Marshall, Missouri

HOWARD RICE
Slater, Missouri



GLEN RICHARDSON
Slater, Missouri

ELEANOR SUE ROBERTS
Marshall, Missouri



WILLIAM ROGERS
New London, Iowa

DEBORAH ROSE
St. Louis, Missouri



JAMES ROSS
Kansas City, Missouri

ELEANOR JEAN RUSH
Lexington, Missouri



WILLIAM SCHOELLER
Raytown, Missouri

MARIAN SCHULZE
St. Louis, Missouri



GUY SCHUPP
Marshall, Missouri

WILLIE W. SLAGLE
Marshall, Missouri



JANE M. SMITH
Greenville, Virginia

MARY BETH SMITH
Marshall, Missouri



WILLIAM STEEN
Marshall, Missouri

JACQUELINE STIPES
Marshall, Missouri



ALVAH W. STUART, JR.
Swarthmore, Pennsylvania

RICHARD W. THOMAS
Boonville, Missouri



MARY TITTSWORTH
Green Ridge, Missouri

MAMIKO TOGASA
Japan



ELEANOR VARGA
Elyria, Ohio

TOM VEATCH
Kansas City, Missouri



MARY VOGEL
Marshall, Missouri

NANCY WARDLOW
Kansas City, Kansas



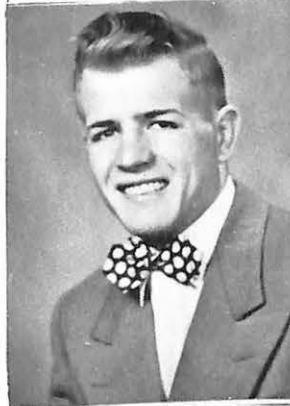
HAROLD WEINTRAUB
Washington, D. C.

HOWARD WELTON
Waterbury, Connecticut



DONALD G. WILLIAMSON
Fulton, Missouri

KENNETH WILLITS
Oklahoma City, Oklahoma



FRED R. WILSON
Branson, Missouri

VIRGINIA WINSLOW
Marshall, Missouri



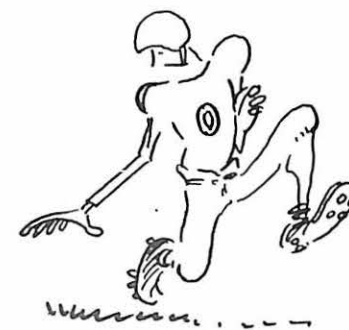
JOYCE WOLFORD
Marshall, Missouri



Valley



Activities





Front row left to right: Heege, Younger, Rose, Whyte, Rhoades, Pronger; Second row: Bernhardt, Luschen, Brooks, Ferguson, Slaughter, Fee, Williams; Third row: Wall, Oyass, Carter, Bill Smith, Wright, Elmer, Lewis, Windsor, Meyer, Thomas; Rear row: Bybee, Dick Smith, Simms, Roscher, Ferguson, Schupp, Stanley, Herbon, Kellam, Davis, Larson.

SIGMA NU

Sigma Nu, a national social fraternity, has been active on this campus since 1891. Beta Gamma of Sigma Nu was the twenty-ninth chapter to join the national organization and ably sponsored and blessed with good leadership, has always lived up to the purpose of Sigma Nu—honor, intellectual achievement, and social development.

The biggest phase of fraternity life this year has been the acquiring of Birkhead Maples, built in 1895 of typical southern architecture and rich in tradition, as a fraternity house. Renovation of the house has been progressing steadily throughout the semester.

A high scholastic average has been maintained and the fraternity has been well represented in all college extra-curricular activities. Some of the prominent positions of stu-

dent leadership held by members of Beta Gamma are: The president of the Student Senate, Vice-President of the Student Senate, circulation manager of the student newspaper, co-captain of the football team, and offices of other school organizations.

This chapter is fortunate in having as advisors William I. Ferguson, professor of mathematics, and Herb McKinney, Little All-American football player of 1949. Their guidance and spirit is inspiring to all. We are proud that both are alumni of Beta Gamma.

Men of Beta Gamma have reason to be proud of their fraternity and though many are graduating this year, we are confident that the alumni will live up to the high standards as characterized by members of Sigma Nu.



"The Good Guys"

Very Seldom



Full Dress



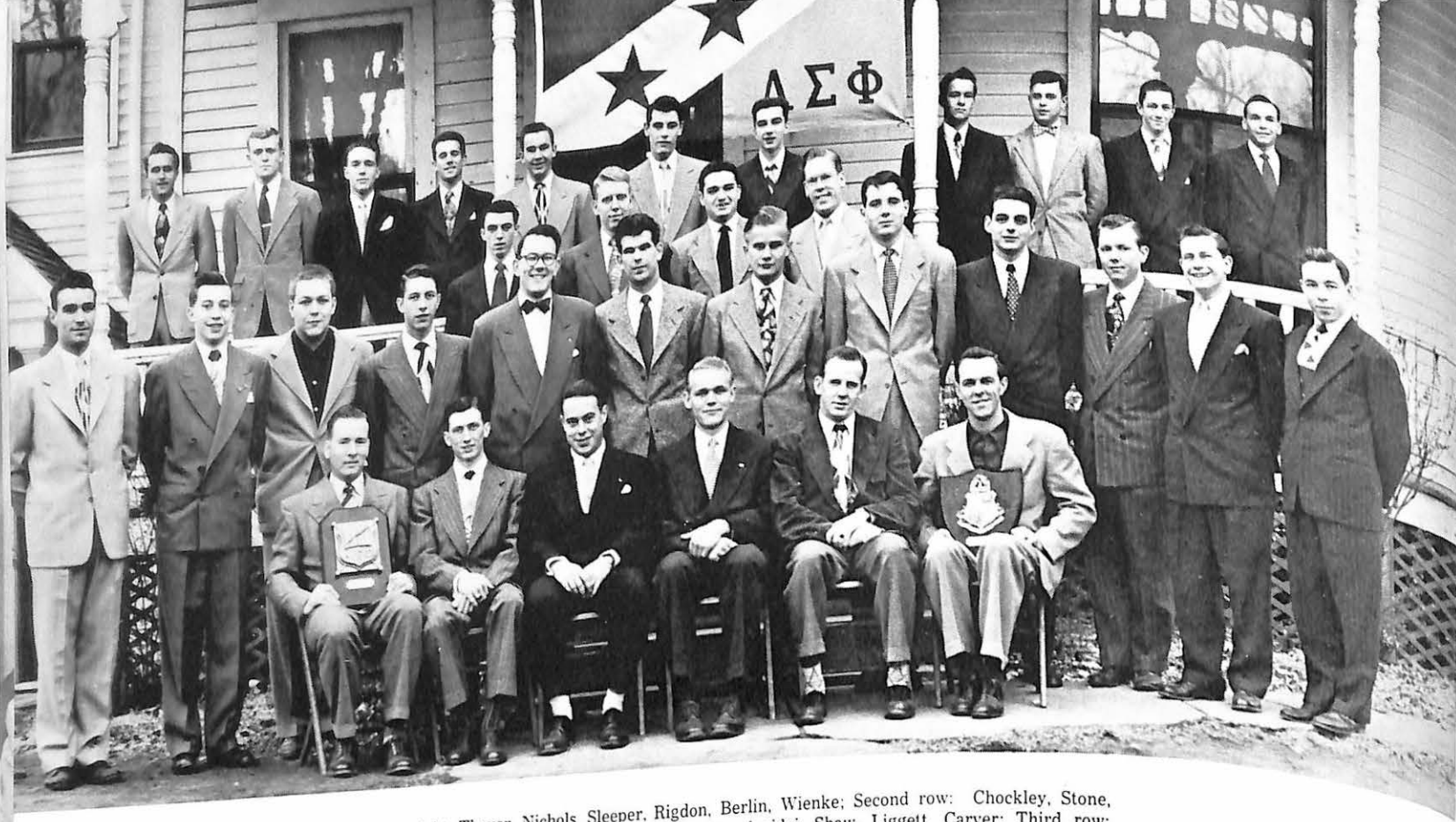
A Good Pledge



Needling Hour



Mom and Dad



Front row left to right: Thayer, Nichols, Sleeper, Rigdon, Berlin, Wienke; Second row: Chockley, Stone, Larson, Vanselow, Larcheid, Swensen, Anderson, Mohrman, Amidei, Shaw, Liggett, Carver; Third row: Kelly, Meinholtz, Murphy, Shanklin; Rear row: Dilly, Tikalsky, DuSold, Rogers, Billington, Glidden, Hall, Wilson, Browning, Jones, Featherstone.

ALPHA SIGMA PHI

Doubtless Alpha Sigma Phi has experienced its finest year since the fraternity was chartered on the campus in 1945.

An exceptionally large pledge class during the fall semester stimulated the organization to greater achievements both academically and fraternally. Fraternally fellowship was epitomized in the "Homecoming Bar-b-que", the Christmas Dance at which the "1950 Sweetheart of Alpha Sigma Phi" was presented, the Greek Letter Dance in the spring, and in various other activities on the social calendar. From a returning nucleus of four active members last September, the fraternity has worked constructively toward its present twenty-five members.

Although the chapter witnessed the return to the Air Force of Dr. Asa Ruyle, Jr., the faculty advisor, an equally fine faculty spon-

sor has been gained in the person of Harold E. Affsprung.

The inter-fraternally respect accorded Alpha Sigma Phi is evidenced by their participation in other campus organizations, in which the Alpha Sigs hold many positions of responsibility.

The fraternity has been ready and willing to assist the administration whenever called upon during the past academic year. Alpha Sigma Phi members feel that in this way they can express their appreciation of the esteem with which the administration regards them. This respect is indicative in the presentation of the East Wing of Black Hall for the "Alpha Sig House", wherein the Alpha Sigs have comfortable quarters, a recreation room complete with refreshment bar, a meeting room, game room, and fraternal solidarity.



Run Pledge-dogs, Run



At the Pig Roast



Coronation of the Queen



The Queen and Attendant



Proud Men of Alpha Sigma Phi



First row left to right: Sutton, Wheeler, Rockhold, Gerhardt, Campuzano, Cola; Second row: Weaver, Slawinski, Swegles, Houston, Knorpp, Vers, Bess, Fisher, Williams.

DELTA ZETA

The Gamma Gamma chapter of the Delta Zeta sorority was founded on the campus in the year 1945. Since then it has been an active member of the National Hellenic Board.

The school year 1950-51 has added more activities to the history of Gamma Gamma. The fall rush program started with a tea at the home of Ellen Dufford. The informal party was held at the home of Mrs. C. W. Elsea. The annual Rose Banquet was held at the Bothwell Hotel in Sedalia, Missouri. Added

to rush week the social events of the year have been numerous. A fish dinner was held at the home of Eleanore Bess in Sedalia, a date party at the home of Mrs. Wylie Steen, a card party at the home of Mrs. Marjorie Pyle, an informal coffee hour for the faculty of Missouri Valley was held at the home of Ellen Dufford. Also there have been numerous birthday parties for initiates and pledges.

In February Betty Lou Young, Suzanne Fisher and Margaret Sutton were initiated into the chapter.



Seated left to right: Hawkins, Jensen, Bredberg, Lucas, Hough, Thompson, Muehlenbrock, Zavrel, Johnson; Standing: Carrothers, Smith, Stipes, Jones, Morgan, Faler, Puyear, Pederson, Matthes, Roberts, Skaggs, Schulze, Dysart, Steers.

ALPHA XI DELTA

The Beta Omicron chapter of Alpha Xi Delta was installed on the Missouri Valley campus in the Fall of 1945. This year marked the fifth anniversary of the chapter.

Rush week started the social activities of the year. A tea, an informal "Circus" party, and the annual Rose Banquet at Arrow Rock made the week complete. Pledging ceremony followed this and then plans were under way for homecoming. The gate entrance, decorated by the pledges, took second prize for the campus decorations. We were proud to have the Harvest Queen and one attendant members of Alpha Xi.

The first semester held excitement for everyone. Some of the activities included: a dance given by the pledges, a steak dinner for members and their dates, and a Christmas party given by Mrs. McAninch before the

Christmas vacation, with everyone exchanging gifts.

Second semester got under way with a dessert-bridge given by the alums. The Alpha Xi's gave a helping hand in the planning and decorating for the Greek Letter Dance in April. In early Spring the men of the faculty were entertained with a "coffee" given in the Chapter Room. The big social event in May was the picnic for the group and their dates.

As individuals Alpha Xi's are active in many campus activities. Many hold offices in organizations and three were selected by the student body to be class queens. The Harvest Queen and attendant and the May Queen and attendant were also Alpha Xi Deltas.

This year has been a successful one for Alpha Xi Delta, with the membership increasing to twenty-six. The outlook points to a bright and successful future.

OFFICERS

President Lois Hough
 Vice-President Betty Lucas
 Recording Secretary Lyle Thompson
 Treasurer Carol Muehlenbrock



First row left to right: Liggett, Sleeper, Shaw, Robbins, Stade; Second row: Rose, Deskin, McKenzie, Groh, Zumbrunnen, Hill, Banta, Kaiser, Linn, Tabor, Nolte; Third row: Lewis, Falvey, L. Wilhite, A. Wilhite, Fergu-son, Welton, French, Stone, Veatch, Goldanskv, Blankenship; Fourth row: Swensen, Bartels, Higginbotham, Wall, Chockley, Runyan, Mohrman, Crabtree, Larcheid, Steen, Proner, Chrisman, Carella, Day, Meinholtz, Huff; Fifth row: Wacholz, Nicholson, Thomason, Swindle, Swails, Wienke, Davis, Smith, Whyte, Bartlett, Mueller, Hall, Morris; Rear row: Browning, Lynn Smith, Heim, Featherstone, Sheets, Turner, Wiley, Leland Smith, DuSold, Rogers, DeLuca.

ALPHA PHI OMEGA

Organized in the fall of 1946, Epsilon Epsilon Chapter of Alpha Phi Omega received its charter in May, 1947. Since that time, it has expanded tremendously, both in membership and in service projects rendered to Missouri Valley.

This is primarily a service organization. Requisites for membership are; previous affiliation with the Boy Scout movement, and the desire to render service to ones' campus, community and nation.

Epsilon Epsilon is one of the over two-hundred chapters boasting a membership of over 25,000 actives and alumni.

Activities of Epsilon Epsilon have been

many and varied, and include: operating football concessions, ushering at stadium, assisting during registration, sponsoring candle-light dances in the student union, sponsoring Ugly Man-Sag Queen contest, conducting drives for CARE and the Red Cross, blood donor service, programs at the Blosser Home for Crippled Children, and furnishing scout-masters for the troops in Marshall.

Besides these service activities, an annual banquet and several fellowship dances, hay-rides, and other activities are held each year.

Epsilon Epsilon looks forward to continued growth in membership and expansion of its service program under the increased incentive of the American Humanics Program.



Seated left to right: Bredberg, Scheele, Harwood, Rasmussen, Phillips; Standing: Myers, Gram, Morgan, Thompson, Rogers, Meyer, Wilson, Falvey, Wiley.

ALPHA PSI OMEGA

Alpha Psi Omega is an honorary dramatic fraternity organized for the purpose of providing an honor society for those doing a high standard of work in dramatics and allied fields. This fraternity is not intended to take the place of a regular dramatic club or other producing groups. As students qualify, they are rewarded by election to membership in this society. A total of fifty points must be earned before eligibility to membership is secured. These points are made by actual participation and work in dramatic fields.



Seated: Wienke; Standing left to right: Kaiser, Perryman, Brink, Birch, Hains, Blankenship, Overall.

SIGMA TAU DELTA

Since installation of Nu Epsilon Chapter of Sigma Tau Delta on March 12, 1950, this professional English fraternity has promoted the mastery of written expression, encouraged worthwhile reading, and fostered a spirit of fellowship among men and women students of the college who are, or hope to be, professionally engaged in the study or teaching of the English language and English literature.

In their endeavor to stimulate among the members, students, faculty, and citizens of the community a desire to express life in terms of truth and beauty through a first-hand con-

tact with the chief literary masterpieces. Sigma Tau Delta brought to the campus a well-known author and authority on the works of Shakespeare. Dr. Hardin Craig of the University of Missouri presented to a large and interested audience a discussion, "The Meaning in MacBeth".

Active membership is limited to upperclassmen elected by the unanimous vote of the chapter on the basis of character, scholastic achievement, and demonstrated ability in creative writing. Dr. Nadine Overall is faculty sponsor.

OFFICERS

President Ralph E. Wienke
Secretary-Treasurer Doris Gerhardt



Seated left to right: Hough, Kilp, Thomas, Lamar, Lockridge.

BETA BETA BETA

The Gamma Xi chapter of Beta Beta Beta, a national honorary biological fraternity, was granted a charter at Missouri Valley in 1929. Tri-Beta is a society for students with a major or minor in biological science. Its purpose is to emphasize stimulation of sound scholarship and promotion of biological research.

The national fraternity publishes "Bios", a magazine devoted to biological papers of interest and research. Members of chapters all over the world contribute to this magazine.

Membership is limited to those persons who expect to major or minor in the field of biology and who are making a B average in biology courses in which they are enrolled.

Regular meetings are held twice monthly, one of which is held in conjunction with the Science Club. These meetings are designed to cultivate intellectual interest in the natural sciences and to promote a better appreciation of the value of biological study.

OFFICERS

President Christine Lockridge
Vice-President Rosalie Kilp
Secretary-Treasurer Martha Lamar
Historian Lois Hough
Advisor Dr. Thomas



Seated left to right: Hill, Whittaker, Banta; Standing: Fautot, Turner, Engle, Huff, Pepper, McAnunch, Gerhardt, Hough, Wheeler, Huff, Pearson, Linn, Johnson, Tabor, Perryman.

PI GAMMA MU

Pi Gamma Mu is a national honor society in the social sciences. Membership is restricted to Juniors and Seniors who have completed more than 20 hours of credit in social sciences with an average grade of "B" or better. Meetings are held once every month with discussions in the field of social sciences. The annual banquet was held in November, 1950 at the "Old Tavern" in Arrow Rock, Missouri.

OFFICERS

President Patricia Whittaker
 Vice-President Robert A. Johnson
 Secretary-Treasurer Byron B. Banta



Seated left to right: Morisseau, Kaiser, Davis, Nicholson, Dunlap; Standing: Sanneman, Wilson, Noble, Baman, Landis, Spalding.

CHI ALPHA

Chi Alpha is the fraternity for ministerial students at Valley. The primary purpose of this organization is to promote Christian fellowship among the students and to be of service to the churches of the community.

The original organization of Chi Alpha was in 1929, but it reorganized in the spring of 1949. On the basis of its new constitution the fraternity is trying to promote on a national scale a fraternity for ministerial students. Regular meetings are held every Thursday evening at which time members or visiting leaders take charge of the programs.

Last summer, Chi Alpha lost seven of its members through graduation and transfer, but nevertheless the organization has increased its membership. As a service to Valley and also to provide for an expanding membership in the future, Chi Alpha has inaugurated a program of correspondence with ministers in the state concerning prospective pre-ministerial students.

The motto of Chi Alpha is, "Christ First". Its members seek to put Christ first in their lives and thereby hope to acquire a dynamic faith through experience, worship, and study.



Seated left to right: Whyte, Tabor, Hough; Standing: Smith, Bredberg, Huff, Larcheid, Falvey, Perryman.

GAMMA UPSILON

Missouri Delta Chapter of Gamma Upsilon, National Student Publication Fraternity, was installed May 24, 1950. The purpose of Gamma Upsilon is to promote and stimulate student publications and to recognize achievement in this field.

Membership is open to those persons who have worked two semesters on either of the campus publications or held a staff position on either publication.

The outstanding activity of this chapter is the establishment of a group of awards for outstanding journalism which were presented to selected students. Citations and keys were presented at the annual publications banquet held each spring.

A delegation from Missouri Delta represented Valley at the National Convention held at Culver-Stöckton College, Canton, Missouri. The delegates at this convention voted unanimously to accept the invitation of the Missouri Delta delegates to hold next year's convention here at Missouri Valley.

OFFICERS

- Bert C. Tabor President
- John G. Whyte Vice-President
- Lois F. Hough Secretary
- Randolph P. Falvey ... Corresponding Sec'y.
- Gordon H. Smith Faculty Advisor



Front row left to right: Schulze, Cole, Lamar, Bamman, Waggoner, Miller, Dunlap; Second row: Sanne-man, Davis, Noble, Rila, Wilson, Landis, Kaiser, Nicholson.

GOSPEL TEAM

This year the Gospel Team of Missouri Valley College experienced one of its most successful years. Doubling its membership, the organization succeeded in serving many rural churches.

It is the purpose of the Gospel Team to conduct services in churches that do not have a regular pastor. In these worship services, the teams make no denominational distinctions in making appointments or in conducting the services. Most of the trips made by

the Gospel Team are to small rural churches which would not have services on Sundays were it not for the efforts of the teams.

The funds of the organization are used for some worthy cause each year. This year the group purchased an altar set for Stewart Chapel.

The parishioners have expressed their appreciation to the teams for their services, and the members of the teams feel that they greatly benefited from this experience.

OFFICERS

- Moderator Bill Bamman
- Secretary Martha Lamar



Front row left to right: Cagg, Vers, Bess, Keirn; Rear row: Dunlap, Powell, Buckner, Dufford, Cowen.

DAVIDSBUNDLER

Daidsbundler, the honorary musical organization on the Valley campus, was organized March 14, 1946, with seven charter members. Its purpose is to promote music, and interest in music, on the campus. It elects to membership only such men and women as have shown high excellence both in scholarship and in musical performance.

Besides holding regular meetings, its activities include the arranging of at least one assembly program a year, and the sponsoring of one program of serious music each semes-

ter. In these programs, Davidsbundler has brought to the campus such artists as Professor Frank Bohnhorst, Head of the Department of Organ at the University of Missouri; Pat Dunn, famous radio singer; and Richard El-sasser, Organist at the Wilshire Boulevard Church of Los Angeles, an internationally famous concert organist who has twice visited this campus to give outstanding recitals; and the members helped by selling tickets to make it possible for the St. Olaf Choir to come to Marshall.

OFFICERS

President Helen Vers
 Vice-President Eleanore Bess
 Secretary-Treasurer Robert Reep
 Sponsors Mrs. R. T. Dufford
 Miss Evelyn Powell



Front row left to right: Gilham, Miller, Bess, Moore, Lentz, Rose, Titsworth, Young, Togasa, Hayo, Dysart; Second row: Kemp, Davis, Kaiser Soxman, Bamman, El Am'ary, Wilhite, Rila, Anderson, Landis, Mueller, Morisseau, Davison, Overall; Rear row: Spalding, Perryman, Ctibor, Shaw, Crabtree, Huff, Nicholson.

STUDENT CHRISTIAN ASSOCIATION

The Student Christian Association of Missouri Valley was organized October 24, 1949, to replace the Y. W. C. A. on the Valley campus and has grown to an organization of over forty members. The purpose of the organization is to put Christian ethics into practice on and off the campus and to alleviate social distress whenever possible. Each of the members of the association finds it his responsibility to keep himself informed about the community and the world.

The organization is divided into four committees to carry on its program. They are the World Relatedness, Christian Heritage, Social Action, and Social Life commissions. Each of the committees is led by a commission head and the members of the group work with the commissions in carrying out a Christian program. The association sponsors the World Student Service Fund, and in the past has put on a Wishing Well Dance, and in this school year it successfully sponsored a Sadie Hawkins Day with proceeds going to the fund.



Front row left to right: Dunlap, Gilham, Miller, Porter, Hayo, Vers, Harrison, Keirn; Second row: Schupp, Davis, Rush, Wolford, Cagg, Morgan, Jones, Winslow; Rear row: Heege, Browning, Morisseau, Cowen, Steen, Bueker, Miss Powell, Director.

VESPER CHOIR

This choral group, open to all singers of Missouri Valley College, is under the direction of Miss Evelyn Powell.

The choir has a repertoire consisting of both sacred and secular music. This year the singers have presented programs in churches, high schools, and in the chapel of our college. Special music was provided for chapel for Thanksgiving, Christmas, and Easter.

Perhaps the greatest reward the choir receives is the happiness from singing for

others. The students enjoyed going to the Blosser Home for Crippled Children to sing Christmas Carols for the children in the home.

The Chapel Choir, also under the direction of Miss Powell, is made up of a group of students selected from the Vesper Choir. This group provides music for the chapel services of the college.

Small ensembles, selected from the Vesper Choir, have sung for civic organizations of Marshall, and also for various churches of Marshall.



Left to right: Johnson, Morgan, Lockridge, Hickman, Phillips, Banta, Elmer, Wright, Carter, Shaw, Plate, Huskey, Lamar, Perryman.

STUDENT SENATE

Functioning as a unit for the best interests of the student body as a whole, the Student Senate this year made its most notable contribution in the way of beautifying the Ferguson Student Union, which is used by the entire student body of Valley. A permanent trophy to house Valley's many awards was constructed through the action of the Senate, and an attractive divan was added to the Union furniture with Senate funds.

Throughout the year, the student governing group worked toward fuller cooperation of the student body, the faculty, and the administration, and with a long view toward the future, recommended organization of a joint

student-faculty planning committee.

Much credit for the success of the Senate's program, outside the personnel of the Senators, was due to Byron Banta, director of student activities, for his advice and timely suggestions, and to President Tim Wright for his willingness to lead the Senate in its program.

The interest of the Senators in their work was evident from the fact that at virtually every meeting, a majority of the Senate was present to transact business and to bring before the group the suggestions of the groups of students they represented.



Front row left to right: Dorothy Keirn, accompanist; Steen, Herther, Cliff, Myers, Davis, Rawlings, Fichthorn, director. Second row: Goldansky, Wacholz, Haynes, Austin, Browning, Mueller; Rear row: Moore, Perryman, Mohrman, Swensen, Cibor, Bartlett.

MEN'S GLEE CLUB

Owing to the loss of a large number of outstanding voices by graduation, the Men's Glee Club was obliged to work on basic repertoire and tone building this season. By working on both faithfully, it has rounded itself into a well balanced choral organization under the direction of Dr. Claude L. Fichthorn.

Several Chapel programs were presented during the year and trips were made to sing in the public schools of the surrounding territory. Robert Browning was elected manager of the organization.



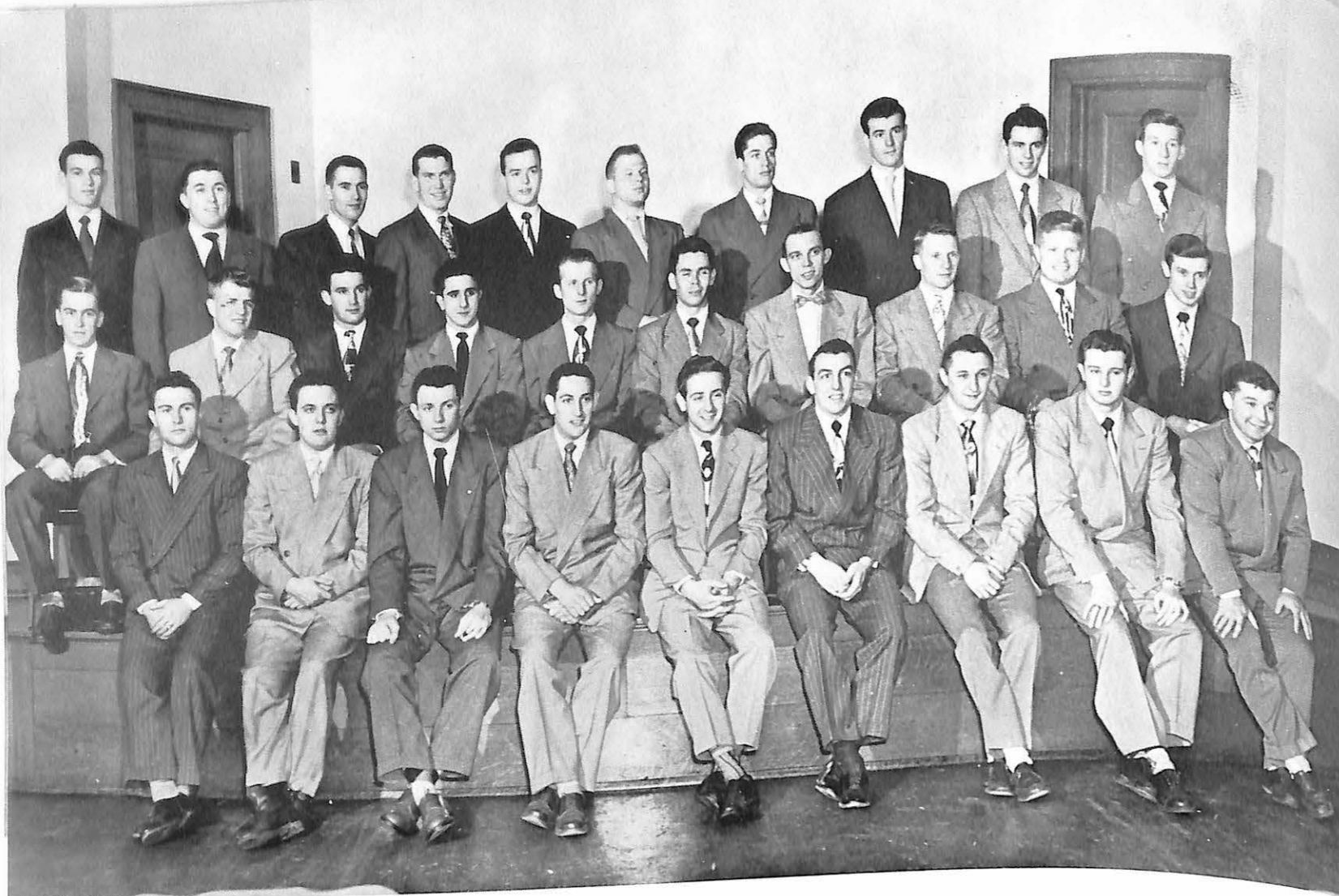
Front row left to right: Erwin, L. Smith, Johanboeke, Saunders, Huskey, Carver, Rose, Fee; Second row: Simmons, Ashinhurst, Kern, Fowler, Fitzpatrick, Scavuzzo, Sigman, Larson, D. Smith, Engle; Third row: Twilling, Thayer, Hisle, Maloney, Elmer, Coffelt, Wright, Amidei, McQuiddy, H. Plate, Mellis, Laidlaw, A Wilhite; Rear row: Harris, Ferguson, Hayden, McDade, Kerr, Moore, Murphy, Williams, W. Moore, Stone.

BUSINESS ADMINISTRATION CLUB

The Business Club was organized October 18, 1950. The purpose of this club is to acquaint business majors with the business world. This is accomplished by having prominent business men in all fields come to our campus for short talks and discussion periods.

OFFICERS

President Luke Scavuzzo
 Vice-President Robert Jensen
 Secretary and Treasurer Van Sigman



Front row left to right: Markland, Steele, Elmer, Hanna, Arnall, Lee, Hanner, Weintraub, Schoeller; Second row: Beissenherz, Willits, Morrison, Scavuzzo, Nelson, Soxman, Hendrix, Austin, Sprigg, Rose; Rear row: Corkran, Schweigerdt, Rasmussen, Pearson, Landis, Wensel, Carroll, Shea, Chasteen, Parker.

V CLUB

The V-Club is composed of men who have participated and lettered in inter-collegiate athletic activities at Missouri Valley.

The purpose of the organization is to maintain and promote clean and wholesome athletics at Valley and to further the interests of the Vikings and its teams on all occasions.

As an active organization on the campus the V-Club has sponsored an invitational high school basketball tournament and an invitational high school track meet. An annual reunion of alumni of the organization is held each spring to acquaint the yearlings with the former stars, while at the same time enjoying recreation and a banquet.

OFFICERS

President Ken Soxman
 Vice-President Dean Nelson
 Secretary-Treasurer Luke Scavuzzo
 Sergeant Bob Hendrix



Front row left to right: Wacholz, Featherstone, Tabor, Bennette, Huff, Swindle, Swensen, Nicholson, Linn; Second row: Bartels, Hough, Varga, Wardlow, Moore, Walker, Young, Miller, D. Carstenson, Williams; Third row: Falvey, Rasmussen, B. Carstenson, Veatch, O'mon, Mueller, Nichols, Hall, Chockley, Harris, Pearson; Fourth row: Bartlett, Carlstrom, Wall, Swails, Landis, Wheeler, Shanklin, Day, Goldansky, Smith, Ferguson; Fifth row: Chrisman, Lewis, Rila, Pederson, Crabtree, Robbins, Bacon, Higginbotham, Brookover, Mohrman, Carella, Larcheid, McKenzie, Runyan, Deskin; Sixth row: Thompson, French, Tooke, Whyte, Peel, Meinholtz, Brahm, Johnson, Stade, Wilhite; Rear row: Rogers, Dilley, Stuart, DeLuca, L. Sheets, J. Sheets, Turner, Browning, Heim, Rose.

HUMANICS CLUB

Established on the Valley campus by the American Humanics Foundation in the fall of 1949, the Department of Human Relations has grown from the original forty students to a total of ninety-five during the year 1950-51. All of these young men and women are planning to become professional leaders in the area of Social Group Work. In addition to rendering service to the varied agencies in Marshall and the field trips to observe outstanding ac-

tivities in the youth work field, the group meets weekly in non-credit Seminars to share discussions with outstanding leaders brought in for the occasion. Early in the second semester, the members of the department completed their organization and have become a definite departmental club under the name of "The Humanics Club" under the supervision of Professor Hill, Chief Resident Counsellor of the American Humanics Foundation.



First row left to right: Wacholz, Maguire, Dysart, Lentz, Moore, Roscher, R. Morgan, Phillips, Wolford, F. Morgan, Titsworth, Mikel, Dunlap, Featherstone, Laidlaw, Dr. Faurot; Second row: Eckles, McQuiddy, Haynes, Wilson, Saathoff, Myers, Bueker, Cowen, Reid, Steen, Peel, Morisseau, Bleazard.

BAND

The fall semester initiates not only the spirit of football, the spirit of bleacher coaches, and the thirsty spirit for knowledge—with these comes the spirit of the college band. The sound of the band leading the Homecoming parade imitates the lead it takes in the cheering section at all the Viking home games. The band, also, made the trip to most of the games away from home this year.

But for the band the football season only initiates the coming rehearsal period for the concert season, which started this year with a very successful assembly program. For the

first time the band made concert appearances at high schools in the north state district. The fellowship of these trips was matched only by the respect for Dr. Faurot who, by his patience, humor, and trust, did well in the molding a small group into a quality band.

The band improved greatly this year. Now it will be in the hands of a new student body who, with interest in school spirit, fellowship, and relaxing good times, can make it better for next year. Few members will leave from this year's band—next year we are counting on quantity as well as quality.

- Director Dr. Jean H. Faurot
- Assistant to Director Lewis H. Dunlap
- Concertmaster Marilyn Dysart
- Marching Officer Jeannie Phillips
- Drum Majorettes Rose Morgan
Joyce Wolford
Audre Bredberg



Seated left to right: Banta, Falvey, Davison; Standing: Weaver, Windsor, Puyear, Carrothers, Wilhite.

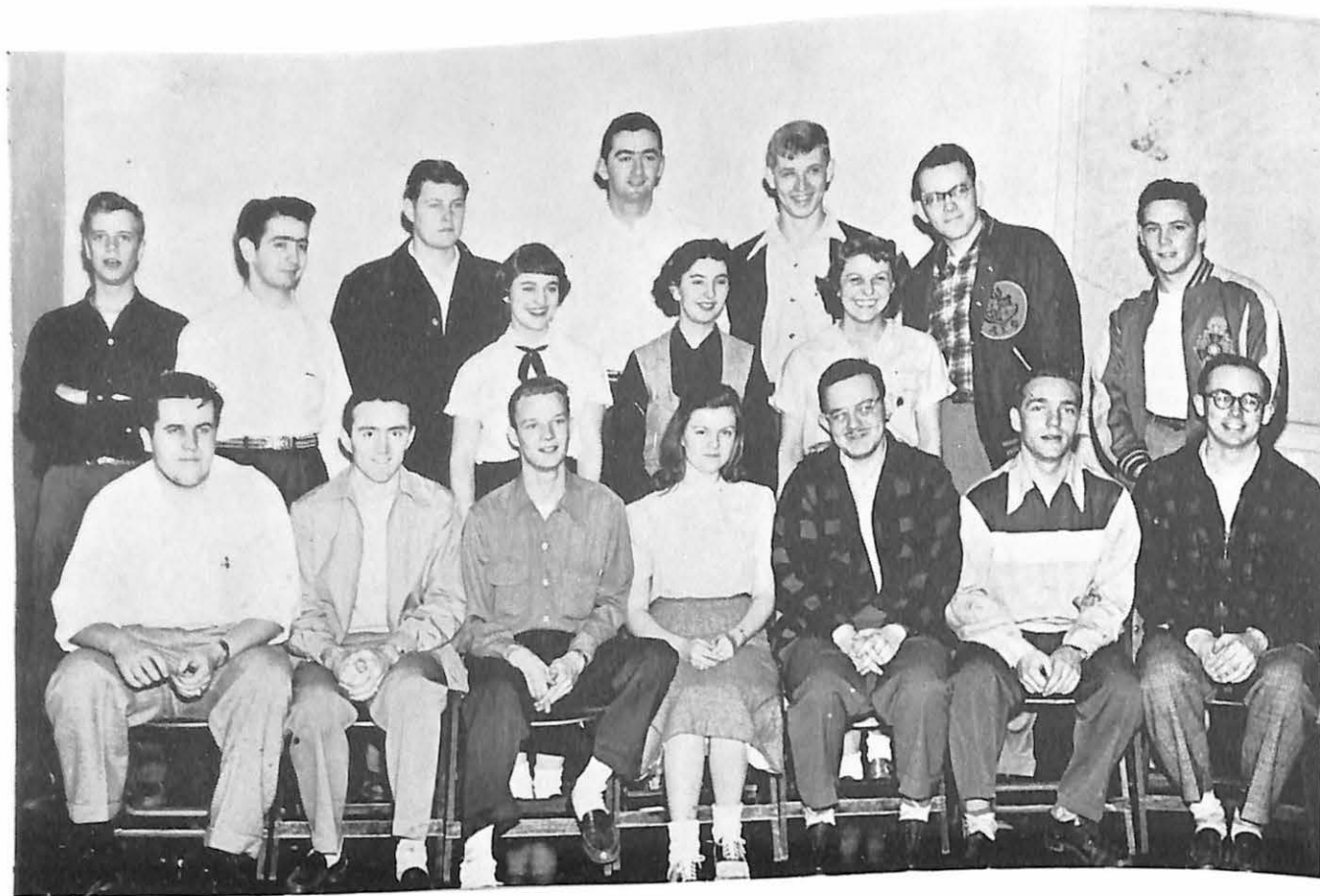
STUDENT SOCIAL LIFE COMMITTEE

The Student Social Life Committee is the organization that plans and puts into action the major social events of the school year. The vice-president of the Student Senate acts as the chairman of this group with a membership consisting of one representative from all the major organizations on the campus. This committee has planned the Homecoming Parade and Dance, the Christmas Dance, St. Patrick's informal dance and the May Dance. They help in the preparation for the Candlelight Dances held on Saturday nights in the Student Union.

The sponsors are Miss Lena Davison and Mr. Byron B. Banta.

The officers are:

- Chairman Meridith Carter
- Vice-Chairman David Stone
- Publicity Randy Falvey



Seated left to right: Falvey, Whyte, Plate, H., Wardlow, Heim, DuSold, Mueller; Second row: Plate, J., El-Am'ary, Carstenson, Weaver, Miller, Larcheid, Kaiser; Back row: Runyan, Crabtree, Pederson.

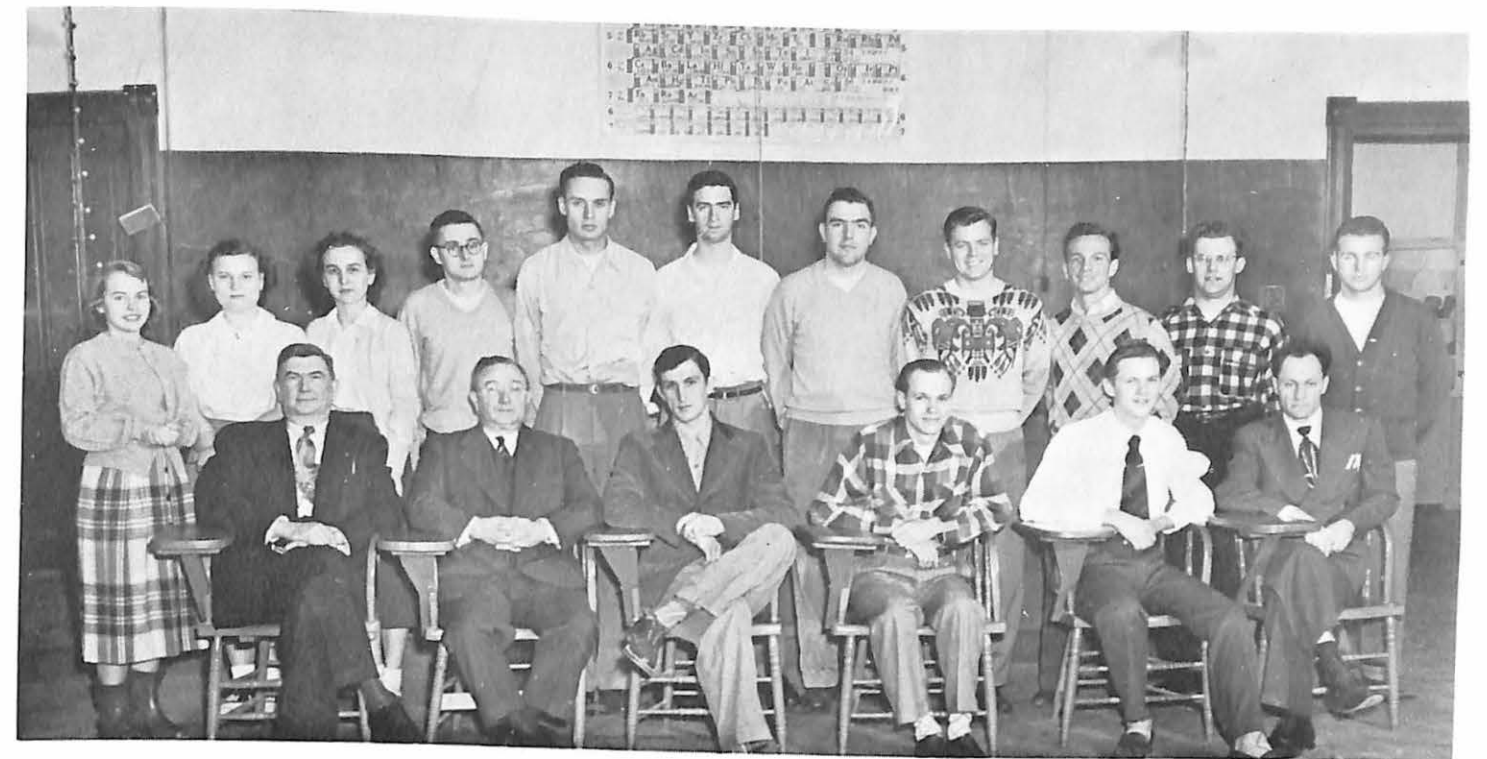
THE DELTA



NEWS STAFF
Plate, Johnson, Mueller



BUSINESS MANAGER
Linn



Seated left to right: Thomas, Dufford, Kilp, Iles, Dautenhahn, Affsprung; Standing: Gilham, Lockridge, Lamar, Schupp, Waddell, Moore, Compton, Fidler, Luethge, Maguire, Jensen.

SCIENCE CLUB

The Science Club continued to develop and present interesting and educational programs with detailed scientific information being offered in an entertaining manner.

The DuPont Corporation brought an assembly program for the students during the fall months; in the spring General Electric Corporation brought their House of Magic Show to the campus, the culmination of several years of writing on behalf of Science Club personnel.

Regular meetings are held on the campus with scientific themes being discussed by leaders from the Valley faculty, outside speakers, and students. Basically, the organization augments the classwork of the students who have as their major interest some phase of science.

Dr. Ray Dufford, Dr. Lawrence Thomas, and Harold Affsprung have provided sympathetic leadership from the faculty level while Jerry Kilp has spear-headed the forward motion on behalf of the membership.



Seated left to right: Lay, Carrothers, Zavrel; Standing: Knorpp, Aronson, Houston, Lamar, Lockridge, Weaver.

WOMEN'S STUDENT GOVERNMENT ASSOCIATION

The purpose of the W. S. G. A. is to govern the women students within the dormitory. Weekly meetings are held for judiciary purposes and a monthly Sunday morning breakfast is held.

The activities of the group begin in the fall semester with a formal tea. The next project was that of decorating Young Hall for the homecoming festivities.

As a prelude to the Christmas vacation the W. S. G. A. sponsored a Christmas party

for the women students. There was a program filled with variety and individual gifts for all from "Santa" were distributed.

The annual Skirt Hop was sponsored this year for the first time without outside financial help from the student senate. The Southeast Gymnasium was the scene of this traditional affair on February 9th. The elective honors went to Dick Beissenherz, King of Hearts, Fred Cowen, Bob Simms, Bill Brookover, and Ken Soxman as heartbeats.

OFFICERS

- President Mary Carrothers
- Vice-President Millie Zavrel
- Secretary Barbara Lay
- Treasurer Pat Houston



Front row: Glenna Jo Miller, Ralph DuSold; Seated: Lois Hough, editor; Shirley Faler; Standing: Leonard Perryman, Al Wilhite, J. R. Lewis, Harold Gilkey, Gordon H. Smith.

THE SABIDURIA STAFF

For many years a yearbook has been looked upon as a vital part of the overall college program. It represents in writing and pictures the record of college life, a phase of living that we as students and faculty want to remember in a pleasant manner.

The current edition of the Sab was produced with the above requirements as our fundamental desire. We felt you wanted many good pictures; the book has many, many photographs of all types. We felt you did not

want to spend much time in reading copy; for that reason the written word has been held to a minimum.

The work—many hours are spent in producing a yearbook—has been an interesting experience and we of the staff only hope we have fulfilled to some degree your desires in the way of a college record.

May it bring back to mind every pleasant day you spent at Valley.



Front row left to right: Stipes, Hawkins, Carrothers, DuSold, Rogers, Faler, Schulze, Titsworth; Second row: Bredberg, Fletcher, Morgan, Thompson, Viera, Rasmussen, Pappin, Plate, Heim; Rear row: Wilson, Wiley, Rila, Goldansky, Pederson, Welton, Crabtree, Haynes, Falvey, Myers, Vanselow, Harwood, Meyer.

VALLEY PLAYERS

A group of Viking students have completely reorganized and revitalized the Drama Department of the college even to the extent of adopting a new name, the Valley Players. Rowena Kelly Harwood, the director, stimulated and directed the interested participants and as a result of her enthusiasm a new drive and determination characterized their efforts this year.

The first production was presented on the nights of December 11th and 13th. It was the initial college appearance of "Miss Calico", a musical comedy written by Mrs. Harwood. A large cast trained every night of the week for two months in order to be ready for local followers of college dramatics.

The Valley Players were not limited to one big production. They accepted invitations from Kirksville, Springfield, and Maryville to enter inter-collegiate dramatic meets. Debate, extemporaneous speaking, poetry reading, and one-act plays were on the competitive agenda.

Every two weeks a group from the Radio Workshop presented a radio play over station KMMO, Marshall.

The final effort was the presentation of "Our Town" in Stewart Chapel in the middle of April.

Valley Players have had a good year; others are forthcoming.



Miss Calico



*Jeanette Hickman
Homecoming Attendant*

*Carol Muehlenbrock
Homecoming Queen*



*Mrs. Robert Hendrix
Homecoming Attendant*





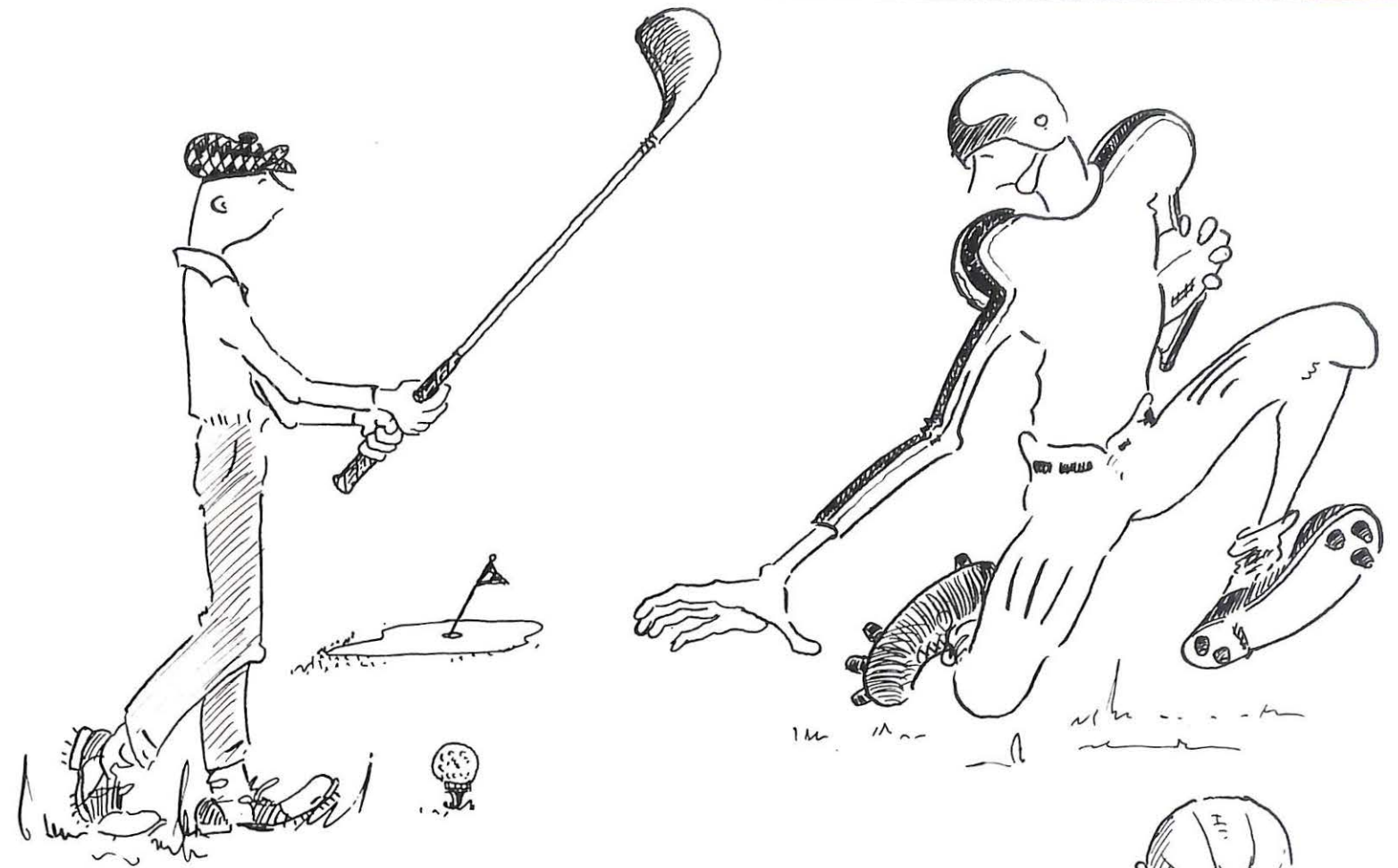
King Beissenherz and His Court



Oh How We Danced!



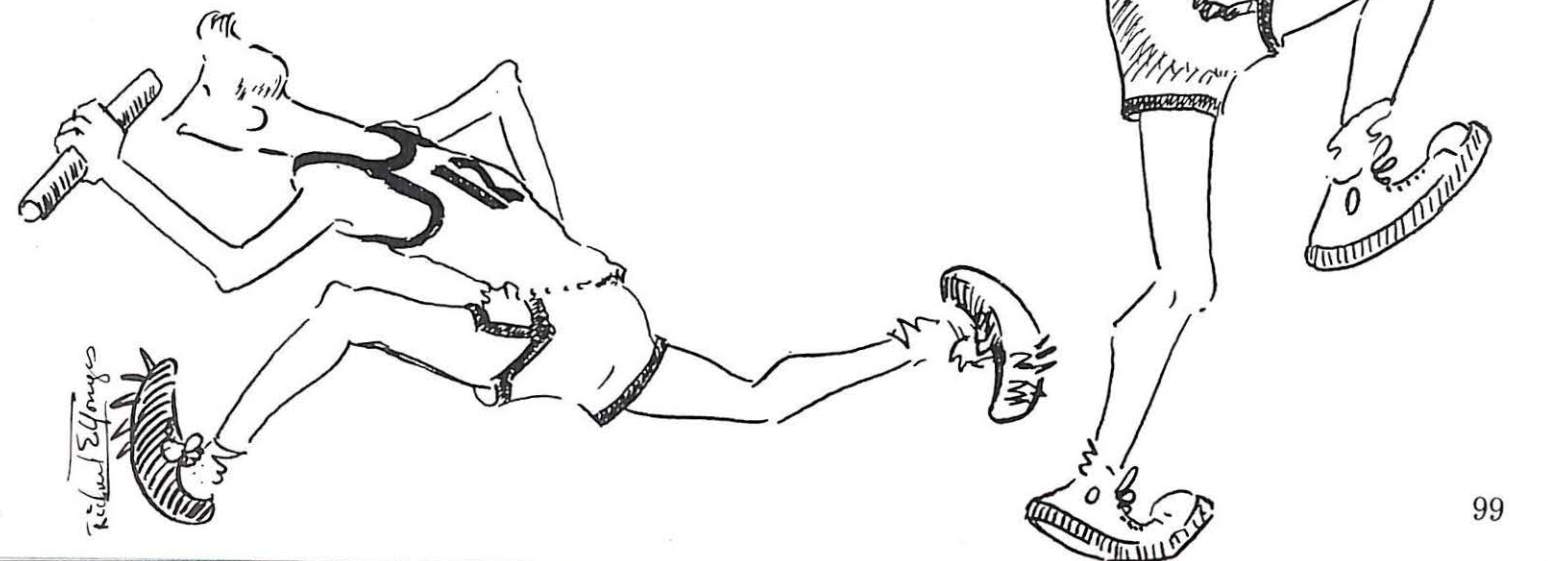
Entranced



Athletics

For

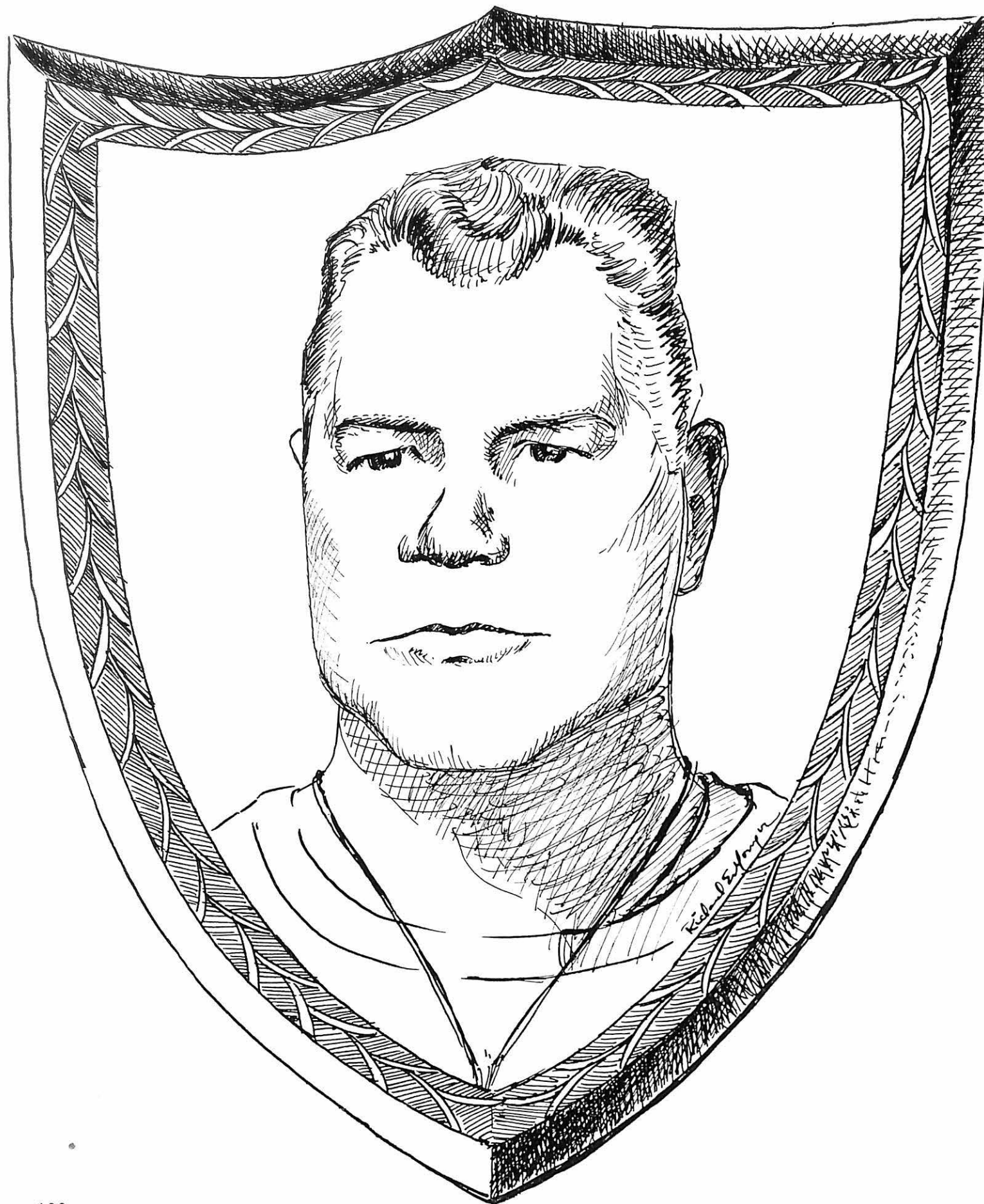
Men



Rockne

Club

Winner



Front row left to right: Gossett, Lee, Carroll, Heinzler, Hayes, Webb, Sprigg, Parker, Knight, Scavuzzo, Schoeller, Chasteen, W. Moore; Second row: Meyer, Morrison, Brookover, Winston, Schweigerdt, Elmer, Gann, H. Nelson, Wright, V. Phillips, Fowler, Hanna, Livingston, D. Nelson, H. R. Phillips, Hunt; Third row: Coach Ashford, Runyan, Pederson, Pugh, Soxman, Luschen, Brooks, Landis, Willits, Weintraub, Corkran, Durrett, Shea, Arnall, Markland, Lowe, Wilhelm, Fletcher, Assistant Coach McKinney; Rear row: Steele, Collins, Wenzel, J. Moore, Corrodi, Rice, Hendrix, Gibler, Davis, Parlett, Simmons, Herther, Borngesser, Bamman, Ross, Moles.

1950 VARSITY FOOTBALL

The Viking football ship plowed through some heavy seas during the 1950 football season, but when the final gun sounded in the Springfield game, Coach Volney Ashford's grid stalwarts had once again chalked up a record that was the envy of almost every small school in Missouri and Kansas. Perhaps the only exception was the William Jewell Cardinals, who threw Redbirdland into convulsions of joy by taking the Missouri College Athletic Union football crown away from the Vikings for the first time in six years. It is that 7 to 6 loss to Jewel, moreover, that the Valley gridders and their followers will want to forget in years to come.

All in all, however, the 1950 Viking squad will go down in the annals of the school as another in the series of fine grid aggregations that marked Valley football in the years after World War II. The year's record was eight victories against only two defeats, both of which were by margins of a single point. In points scored, the Vikings were far and away in the lead of their opponents with 276 points to their opponents 81 points.

One honor the Valley players and fans will remember especially from the 1950 season was the selection of Coach Ashford as one of two Little All-American Coaches of the Year by the Rockne Club of Kansas City, a nationally-known group of football fans. Another

highlight was the defeat of the erstwhile nemesis of the Vikings, the Evansville College Purple Aces, for the first time in the 3-year rivalry of the two teams.

Missouri Valley 48 — College of Emporia 0

The Viking football machine got underway with a spectacular win over the College of Emporia. On the first play from scrimmage Bruce "Spider" Webb dashed forty yards for the first of Valley's seven scores. After that the spirit of our opponent seemed to be broken and the Big Orange were able to score almost at will.

Missouri Valley 45 — Kirksville State 20

The second encounter of the season found Missouri Valley's Vikings pounding out five touchdowns in the first half while the Bulldogs of Kirksville State were able to counter only once. Sterling performances were turned in by "Juicy" Sprigg, Tim Wright, Bruce Webb, and Homer Nelson.

Missouri Valley 20 — Ottawa University 0

Valley met the Indians in Blues Stadium in Kansas City. The Vikings slammed out three quick T. D.'s and then put on a beautiful show of defensive strength by bottling up the Ottawa offense completely.

Missouri Valley 13 — Evansville 0

Missouri Valley traveled to Indiana for their next battle. Of all the games won in the season, this is the one that gave Valley rooters the most satisfaction. A quick look at the record books shows that it was the Aces that ruined Missouri Valley's perfect season the year previous and the mighty Vikings made the trip with revenge in their hearts. On the opening play of the game Marvin "Juicy" Sprigg went off tackle for seventy-three yards and six points. From that point on the game turned into a punting duel with Valley getting the better of the exchange. The Vikings were not able to score again, however, until the fourth period when Bruce Webb went over from twelve yards out. Valley was inside the Aces' ten yard line nine times but on each occasion Evansville managed to thwart the attack.

Missouri Valley 40 — Central 6

Valley met the Central Eagles on Gregg-Mitchell Field in a game that will long be remembered as one of the best played by a Viking squad. The Eagles drew first blood early in the second period on a twenty yard pass play. The Valley men came back quickly and scored twice before the end of the first half. The second half the game turned into a rout as the mighty Vikings rolled up twenty-seven points while holding Central scoreless.

Missouri Valley 31 — Warrensburg State 21

Missouri Valley met the Warrensburg Mules in their Homecoming game, and before they finally won the game they had a bad scare thrown into them. The Mules, playing one of their best games of the season, scored three touchdowns in the first half to lead 21 to 0 at the intermission. The Big Orange came back through

in the final two periods and slammed across five scores to win by a ten-point margin.

Missouri Valley 27 — Culver-Stockton 7

The gridmen of Valley extended their undefeated record to seven in a row when they traveled to Canton, Missouri to meet Culver-Stockton. The Vikings won the game easily and Coach Ashford was once again able to test new men under actual game conditions.

Missouri Valley 20 — Arkansas State 21

In the eighth game of the season Valley met Arkansas State and was defeated by the heartbreaking score of 21 to 20. "Juicy" Sprigg, star halfback, was injured early in the game however, and this piece of bad luck, many believe, might have been the deciding factor of victory. Still, this defeat was a credit to our school because it showed we had the staying power against a very tough foe.

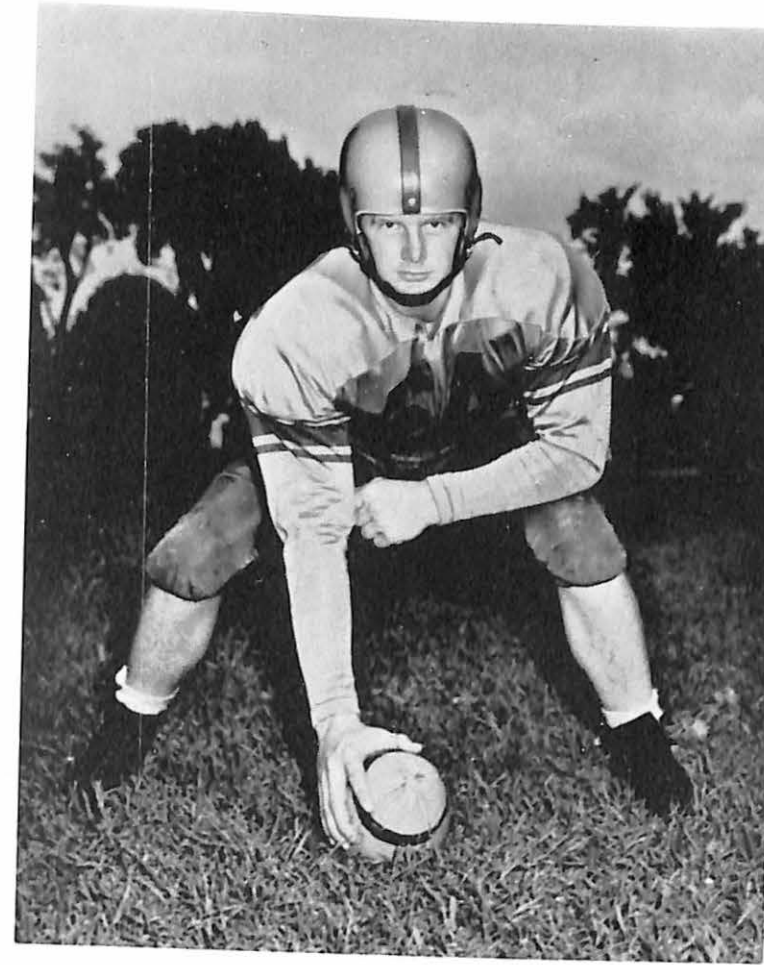
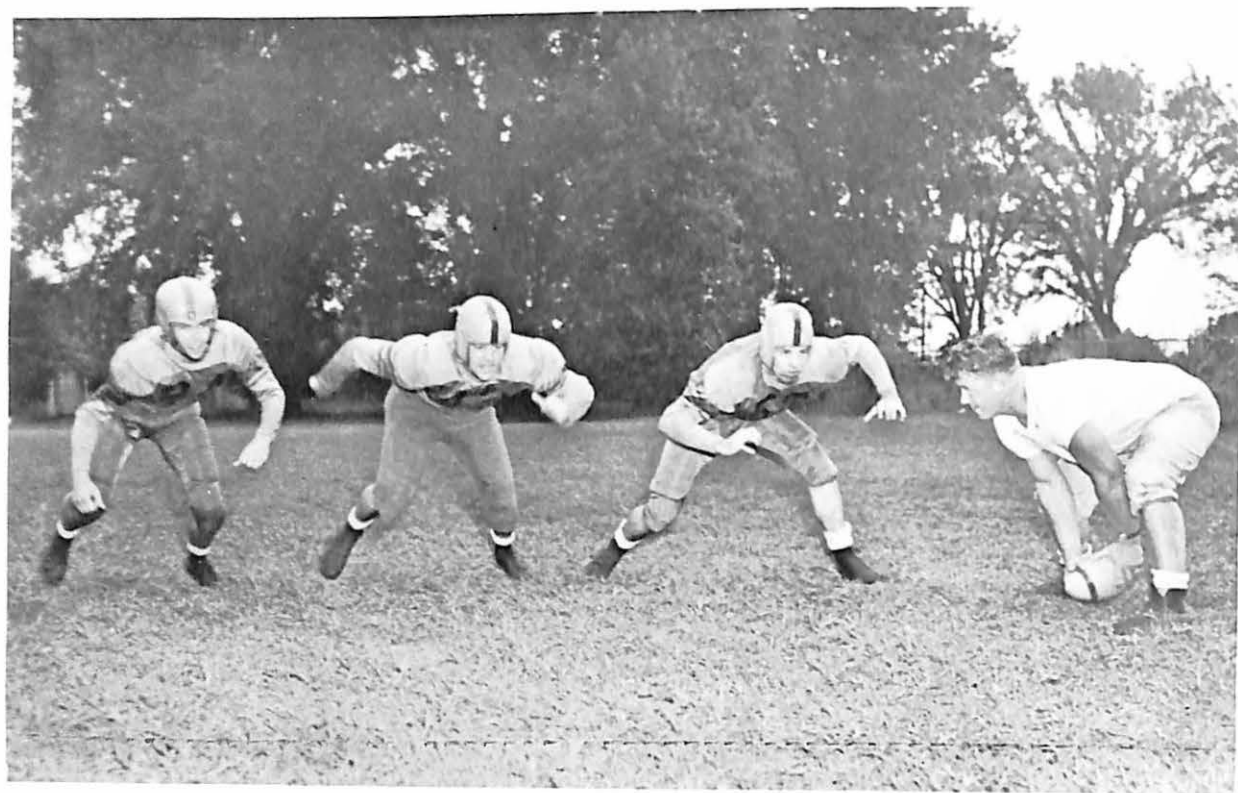
Missouri Valley 6 — William Jewell 7

The next game was played at Blues Stadium in Kansas City against William Jewell. Jewell this season had one of its best teams in many years and were up just about as high as could be for Valley. The final outcome found a gallant Viking team on the short end of a 7 to 6 count.

Missouri Valley 26 — Springfield State 0

Smarting under the sting of two consecutive one-point defeats, Valley took the field on Thanksgiving Day against Springfield State. The Vikes resumed their winning ways and pounded out a 26 to 0 victory against a strong opponent, and finished their season in the same fashion that they started it, with decisive victory.

Coach McKinney Supervises Some Senior Linemen



HOMER NELSON, Co-Captain
Senior
Boody, Illinois



TIM WRIGHT, Co-Captain
Junior
Chicago, Illinois



JACK MOORE
Senior
Macon, Missouri



HARRY HAYES
Senior
Marshall, Missouri



KENNETH SOXMAN
Senior
Kansas City, Missouri



MARVIN SPRIGG
Senior
Marshall, Missouri



DELMER GANN
Senior
Marshall, Missouri



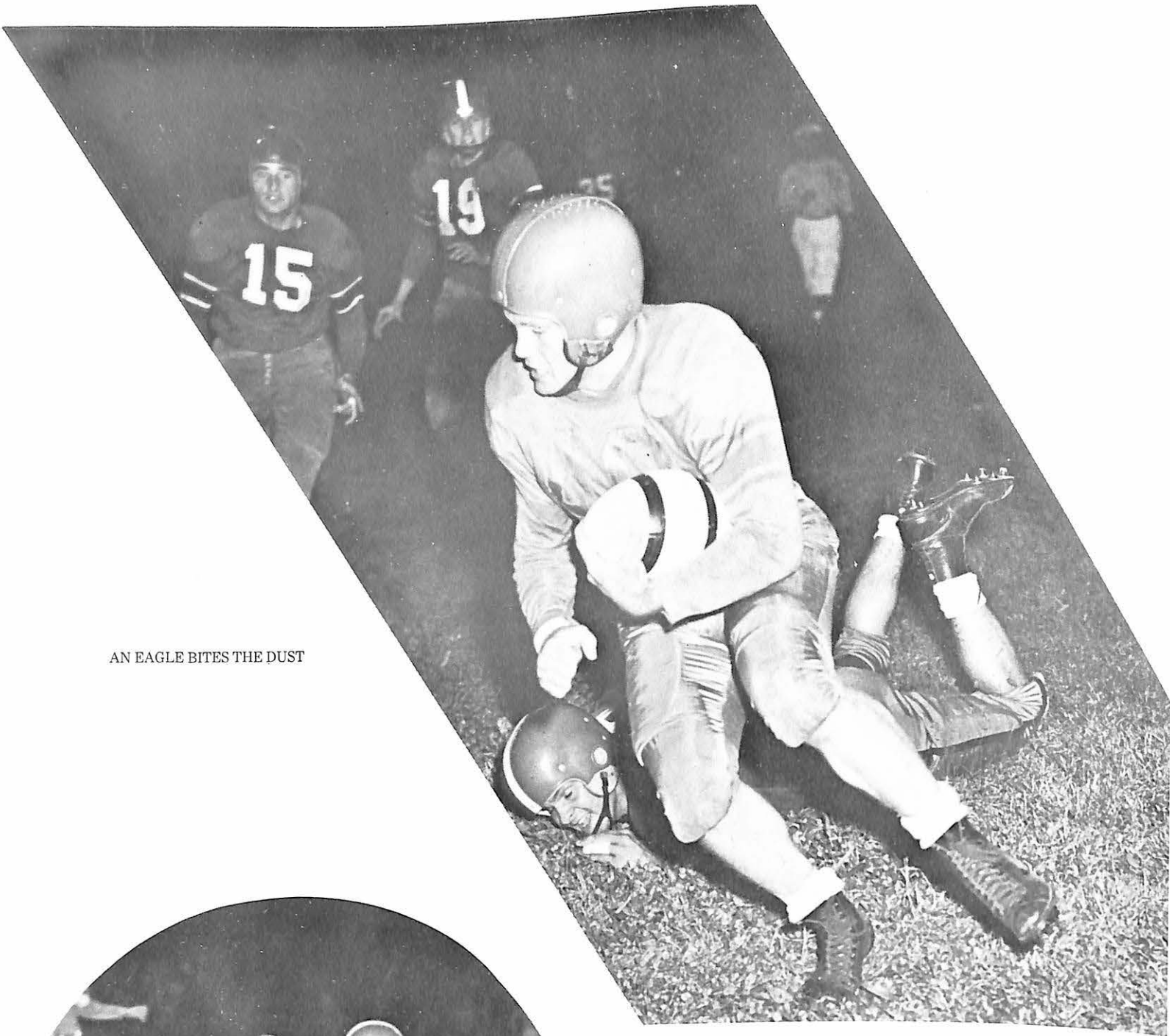
H. R. PHILLIPS
Senior
Altmont, Kansas



LUKE SCAVUZZO
Senior
Harrisonville, Missouri

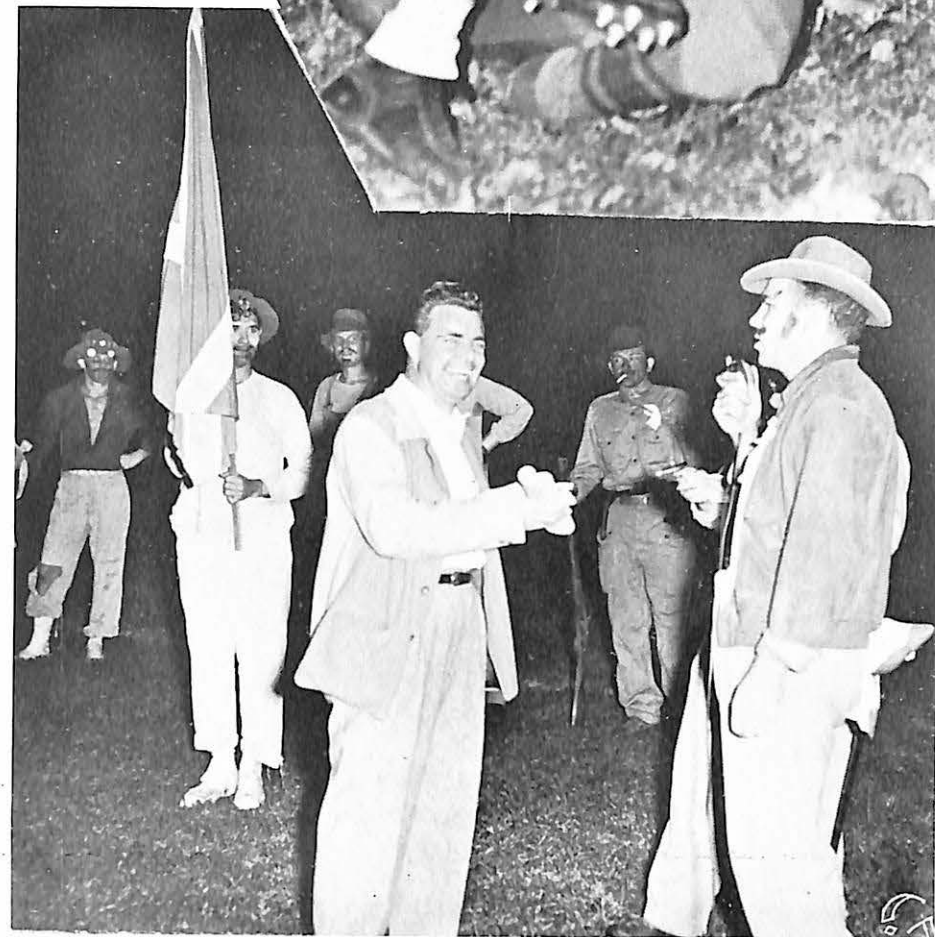
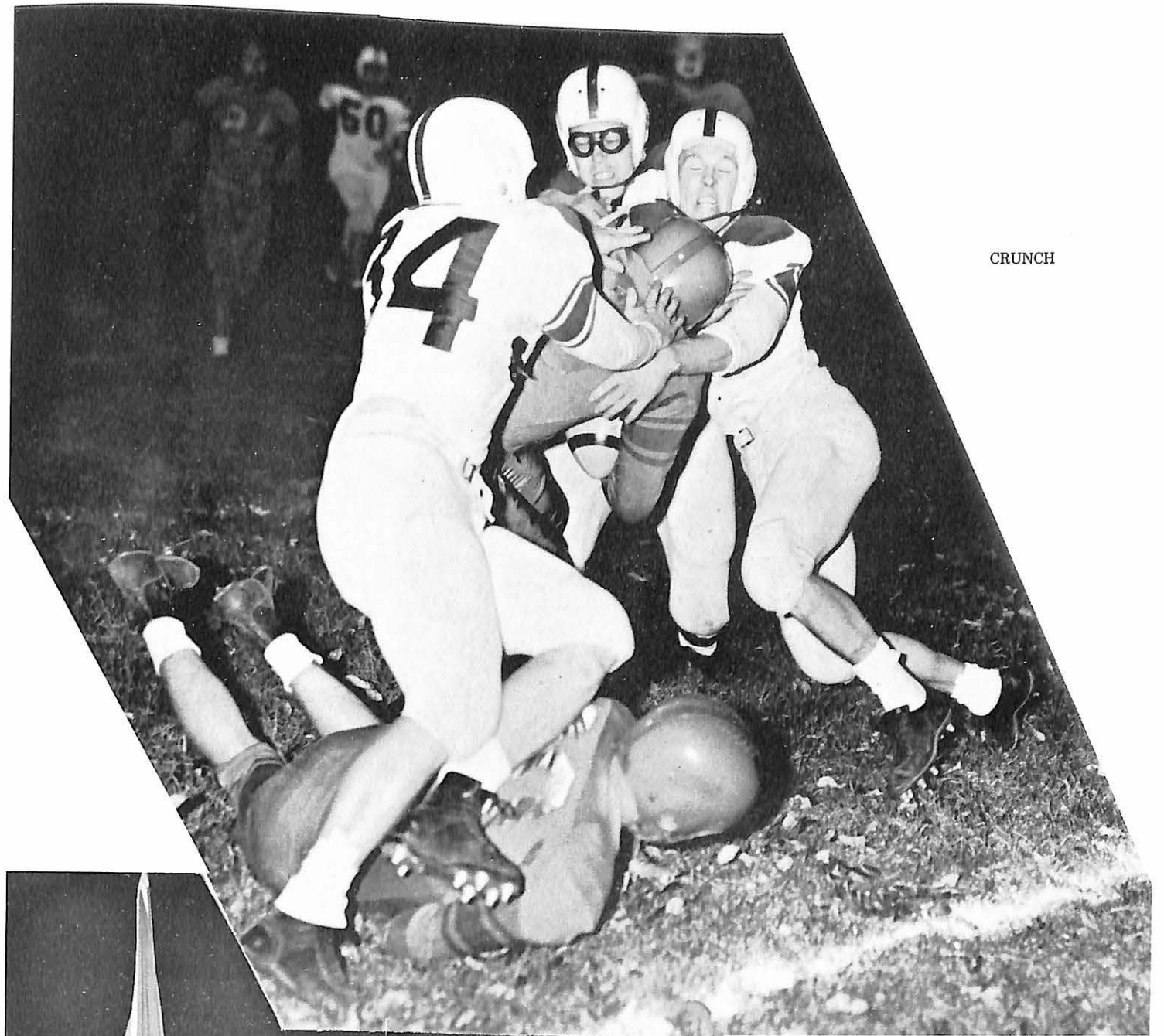
MAC BROOKS
Senior
Marshall, Missouri

AN EAGLE BITES THE DUST



OUCH!

CRUNCH



SERGEANT LINNELL COMMISSIONED A "KERNEL"



Front row left to right: Brown, Dean Nelson, Hanner, Beissenherz, Webb, Gilmore, Hendrix, Johnson; Sec-
ond row: Weintraub, Lee, Robb, Thomas, Homer Nelson, Phillips; Rear row: Williams, Ravenscraft, Mark-
land, Meyer, Fowler, Hanna.

VARSITY BASKETBALL

A Missouri Valley Viking basketball team that had its ups and downs during the entire 1950-51 cage season closed its books on a record of eight victories, fifteen losses, and one unusual tie. Working against Coach Volney Ashford's players all season was a height advantage that forced the Vikings to spot their opponents from one to three inches in overall height in virtually every game.

Earning letters during the 24-game cage year were eight Valley basketeers, including Dick Beissenherz, Don Brown, Homer Nelson, H. R. Phillips, Bruce Webb, Russ Gilmore, Fred Hanna, and Larry Hanner. Because of an unfortunate infraction in M. C. A. U. rules, two Vikes who played regular ball all season were not eligible for letters. They were Art Johnson and Bob Hendrix, the latter rolling up a big 21 point-per-game average on a total of 486 points.

The Viking basketeers were a hot and cold team during the entire season. They started the season by administering defeats to "K" Lunch of Kansas City, Ottawa, Warrensburg, the College of Emporia, and Austin College of Texas. At that point, Valley had hopes of an M. C. A. U. crown, but the team hit a cold streak and dropped four games before they could resume their winning ways.

The eleventh game on the Valley schedule resulted in an almost unheard-of tie, because the score books of the Vikings and Kirksville State Bulldogs showed identical counts of 62 points.

The next encounter against Drury was one of the best games Valley played all season. The entire team was red-hot, and when the game ended, the Vikes had a comfortable lead of 15 points.

The remainder of the season, according to the record books, was a drab affair, but in reality, many of the games the Ashfordmen dropped were decided by a few lucky breaks. In the last three games of the season, Valley led all the way until

the closing minutes, and then were beaten on three or four quick buckets by their opponents.

In the season's finale against Kirksville, the Vikes played harder than at any time previously in the season, and it was apparent from the start of the game that the Big Orange team was performing on the boards with a vitality that had been unknown to them before. A late Kirksville rally, however, enabled the Bulldogs to nose out Valley by three points.

In M. C. A. U. competition, Valley won two games and lost ten, although one victory was over Drury, second place finishers in the conference.

BASKETBALL RECORD

- K Lunch 53, Valley 58
- Ottawa 48, Valley 59
- Warrensburg 56, Valley 54
- Warrensburg 66, Valley 54
- College of Emporia 67, Valley 73
- Austin College 61, Valley 63
- College of Emporia 75, Valley 70
- Ottawa 83, Valley 57
- Culver-Stockton 45, Valley 42
- Westminster 51, Valley 48
- Kirksville 64, Valley 64
- Drury 56, Valley 71
- Central 73, Valley 61
- Westminster 61, Valley 41
- Springfield State 68, Valley 57
- Culver-Stockton 69, Valley 54
- Drury 64, Valley 57
- Graceland 57, Valley 78
- Central 81, Valley 53
- Tarkio 60, Valley 75
- William Jewell 76, Valley 56
- Tarkio 66, Valley 62
- William Jewell 49, Valley 44
- Kirksville 53, Valley 50



RUSSELL GILMORE
Sophomore
Sweet Springs, Missouri



ART JOHNSON
Senior
Chicago, Illinois



DONALD BROWN
Senior
Holden, Missouri



H. R. PHILLIPS
Senior
Alton, Kansas



ROBERT HENDRIX
Junior
Kansas City, Missouri



LAWRENCE HANNER
Freshman
Elkhart, Illinois



BRUCE WEBB
Senior
Kansas City, Missouri



RICHARD BIESSENHERZ
Senior
Wellington, Missouri

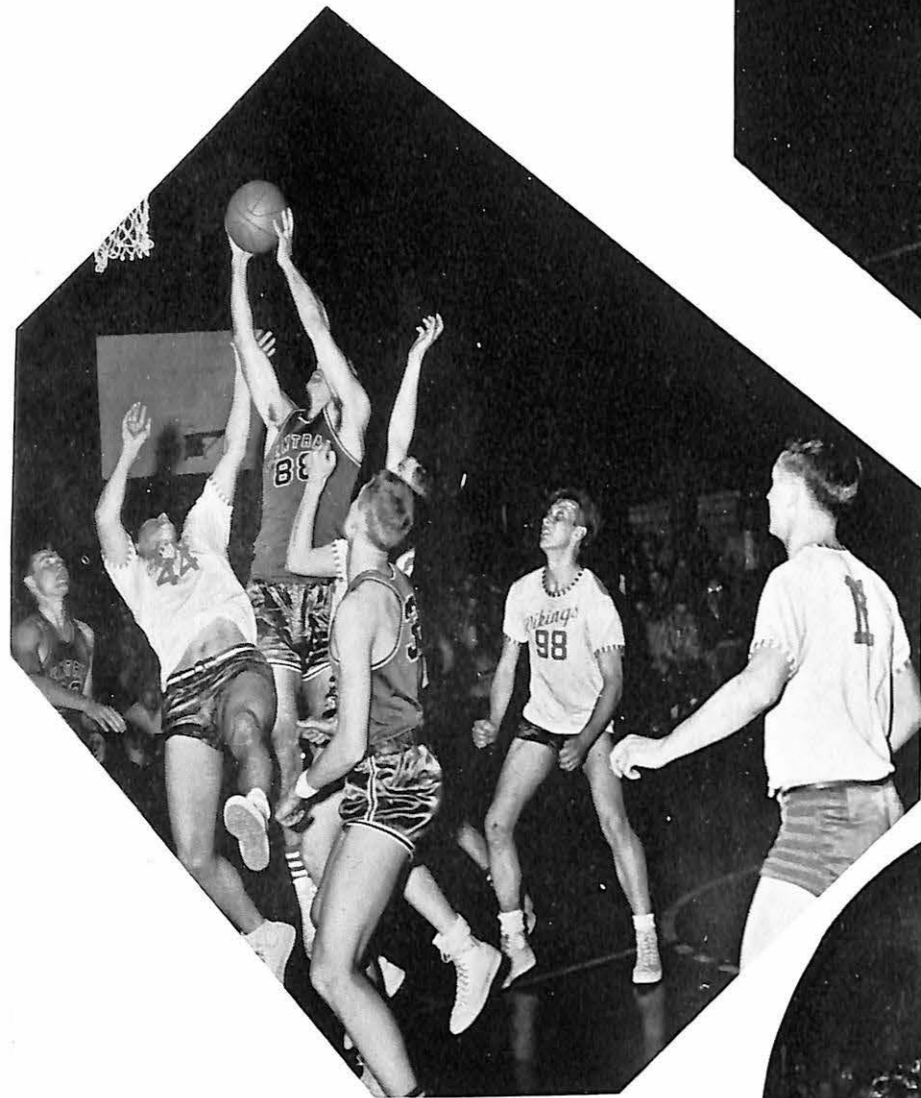
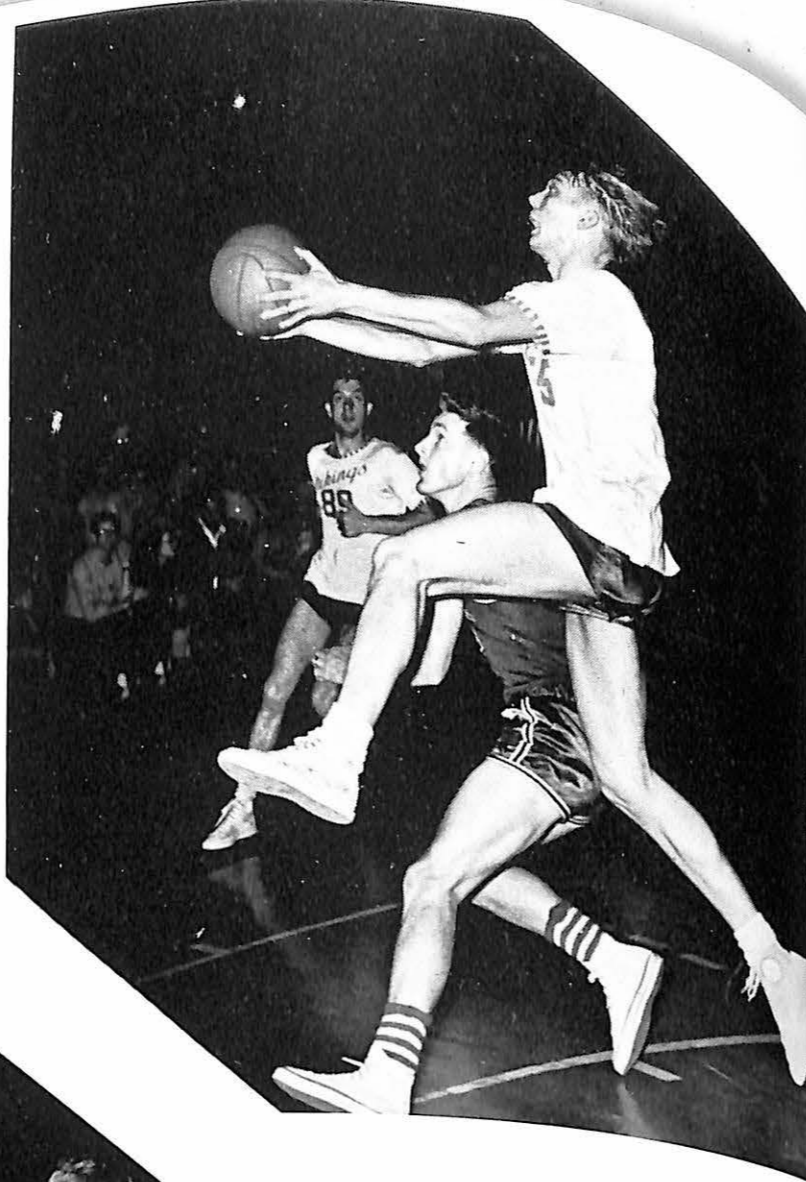


FRED HANNA
Sophomore
Holden, Missouri



HOMER NELSON
Senior
Boody, Illinois

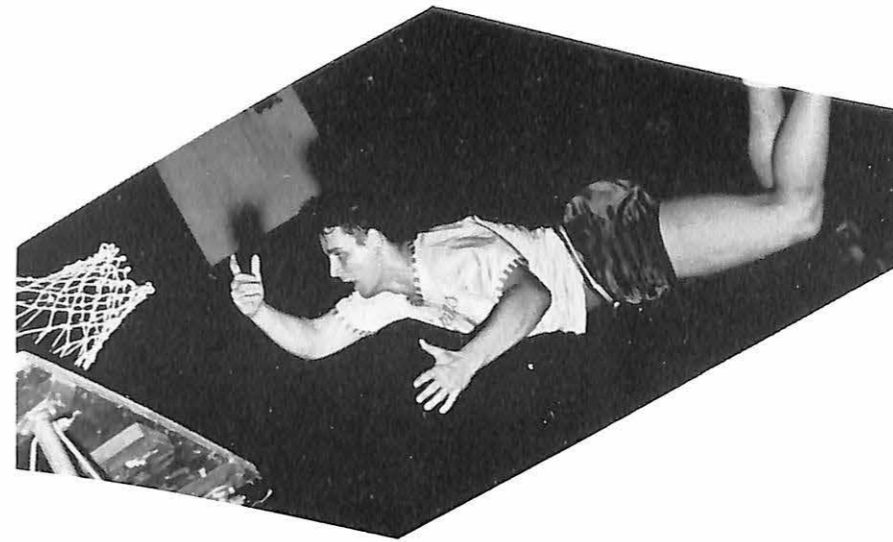
Joint Jumps



Traffic Jam

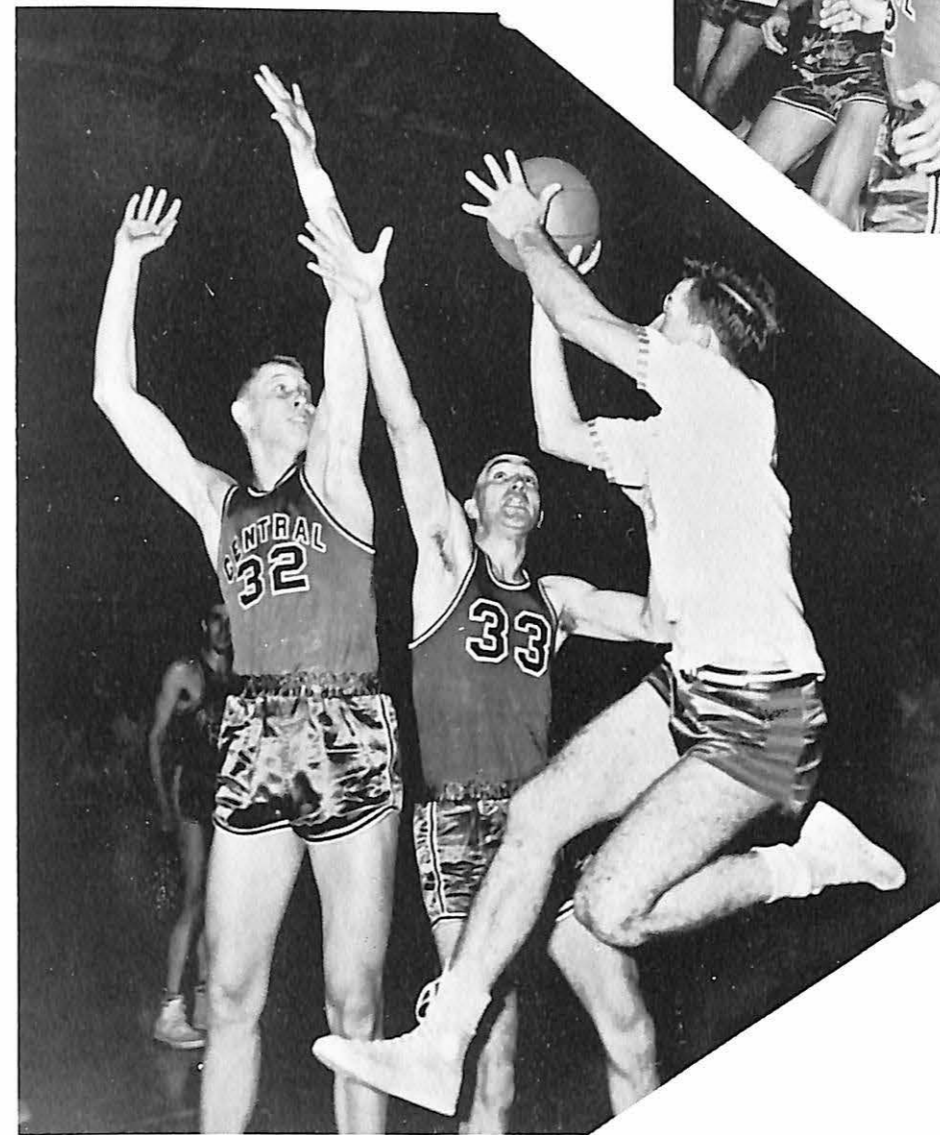
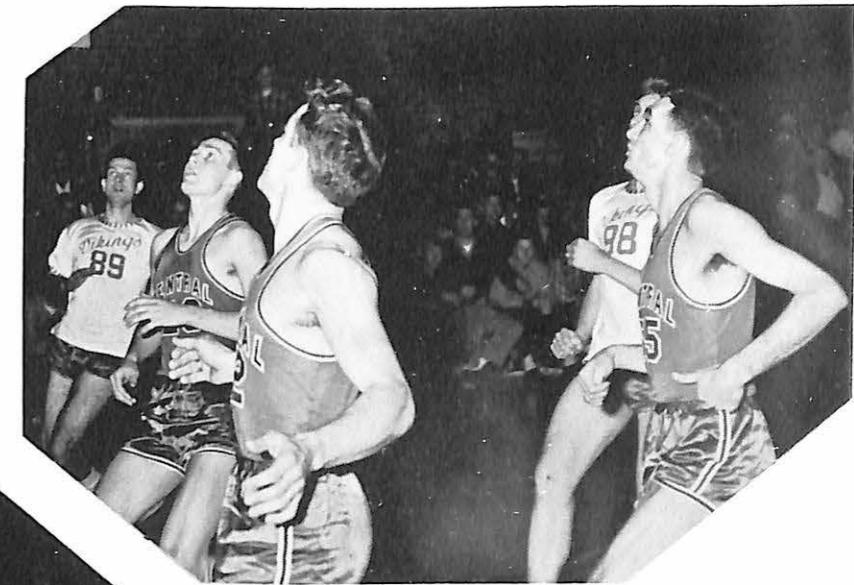


Blow Hard, Joint



Wha' hoppeded?

Lookit da' boid



Gliding Gilmore



First row: Coach Ashford, Phillips, Parlett, Parker, Nelson, Carroll, Borngesser, Lowe, Meyers; Second row: Corkran, Elmer, Sprigg, Hanna, Williams, Runyon, Pederson, Ross; Third row: Austin, Lee, Dilley, Hanner, Curran, Ravenscraft, Soxman, Chasteen.

1951 TRACK TEAM

The Valley track squad, 25 strong, went after their sixth consecutive MCAU championship this year, led by a strong-arm man in the weight events, senior Homer Nelson, and speedster Allan Carroll, sophomore. On their championship trail, Coach Volney Ashford's sawdust and cindermen met the following op-

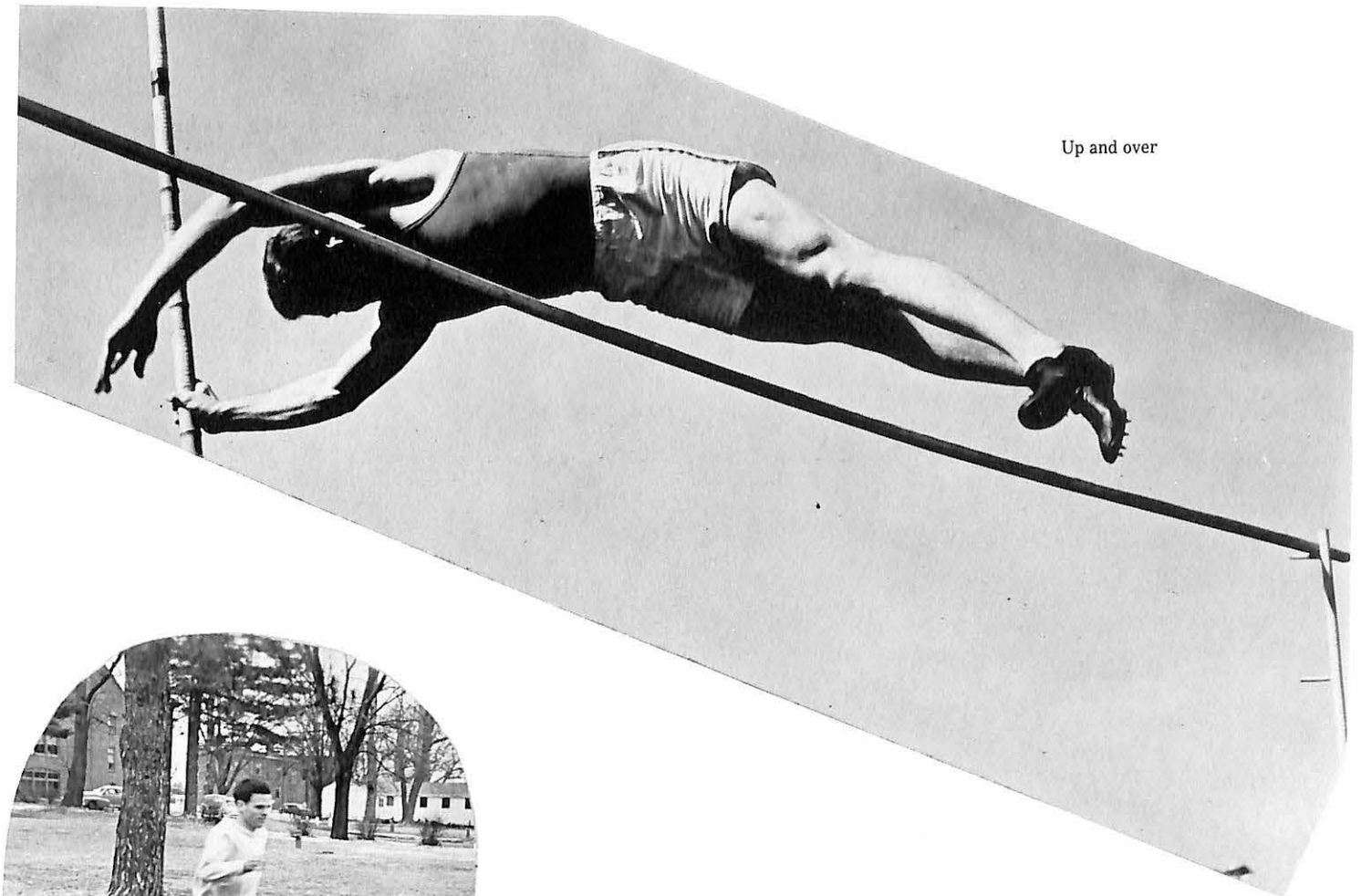
ponents:

Ottawa, Drury, Springfield Teachers, Central, Warrensburg, William Jewell, Westminster, and Culver-Stockton. The conference meet at Valley ended the 1951 season on May 12.

The record of the 1950 track squad was as follows:

Missouri Valley	79	William Jewell	55
Missouri Valley	102	Culver-Stockton	34
Missouri Valley	106	Westminster	29
Missouri Valley	57½	Ottawa	73½
Missouri Valley	68½	Springfield	67½
Missouri Valley	44	Central	60
Missouri Valley	79	Warrensburg	57
Missouri Valley	82½	Drury	51½

M.C.A.U. Conference Title: Won by Missouri Valley with 83½ points



Up and over



The last mile



Five fleet Vikings

Rogues gallery



Looking things over



Get set



Five more



Left to right: Richard Saathoff, Tahseen El'Am'ary, Charley Pearson, George Luethge, Mrs. Duggins

VARSITY TENNIS

The MCAU tennis hopes for 1951 rested on the stalwart shoulders of three American students and one netman transplanted from the sunny land of Syria, Tahseen El Am'ary. Coaching the quartet was Mrs. Ralph Duggins, an experienced tennis player while at Missouri University, and valuable assistance was given by no less a person than Dr. M. Earle Collins, a court star from college days.



Bruce Stewart, coach, Dick Kelly, Larry Larson, Dean Nelson.

VIKING GOLFERS

A team of experienced golfers represented Valley in conference golf meets during the 1951 season, and had one of the most unusual coaches in the entire MCAU. He was Bruce Stewart, biology professor who made a name for himself in the golfing world in the summer of 1950 with a night exploit on the Marshall course during which he shot only seven over par for the 9 hole course. Golf meets were generally held in conjunction with Viking track meets during the spring.

Men's Intramurals



Basketball Champions



Up for a Long Stretch



Badminton finalists



Viera slams



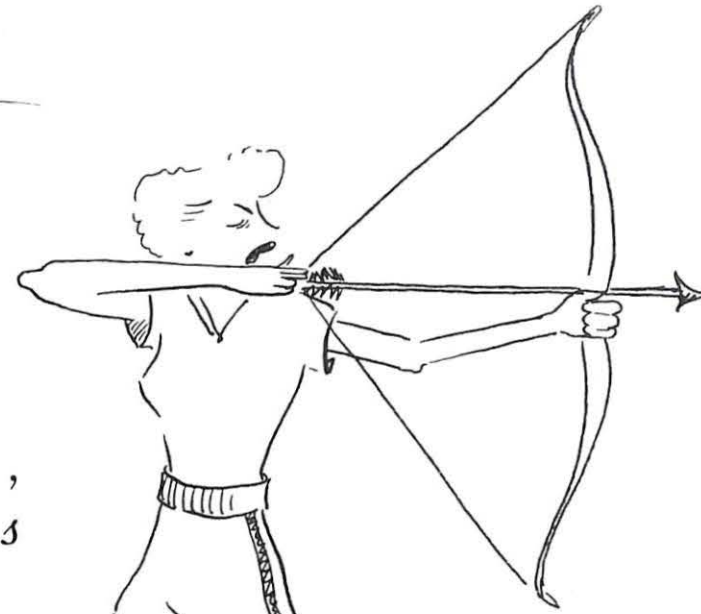
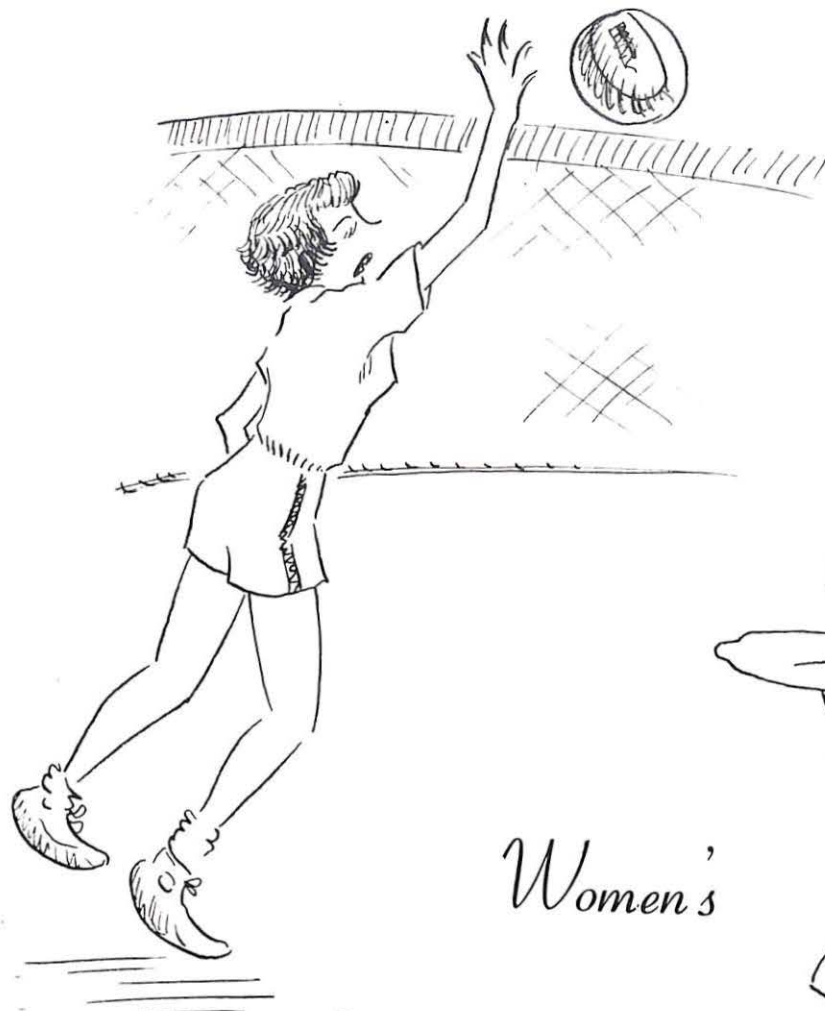
Guy Schupp, table tennis champ



"Muscles" Pezzano



"I got it"



Women's



Athletics



Front row left to right: Wardlow, Carstenson, Gilham, Faler, Hickman, Hough; Second row: Moore, Varga, Jensen, Puyear, Kilp, Duggins, Houston, Bredberg, Zavrel, Carrothers, Huesgen; Rear row: Pittenger, Muehlenbrock, Matthes, Smith, Knorpp, Pederson, Morgan, Lentz, Hayo, Lamar, Jones, Morgan.

WOMEN'S ATHLETIC ASSOCIATION

The Women's Athletic Association is composed of women students who are interested in both individual and group sports. The group is sponsored by Mrs. Ralph Duggins, head of the women's athletic department at Valley.

Tournaments in volleyball, basketball, badminton, softball, tennis and archery were sponsored by the group in their effort to build a bigger and better W. A. A. Points were awarded the girls for participation in each different sport. Girls winning a certain number

of points are awarded athletic letters and pins. At the end of each year one girl is awarded the W. A. A. bracelet as the outstanding athlete of the year. This year's award was presented to Pat Houston.

As special projects for the year the group has undertaken to organize a new point system for awarding the athletic letters, rewriting their constitution, participating in the Spring Carnival, and a social event for their members.

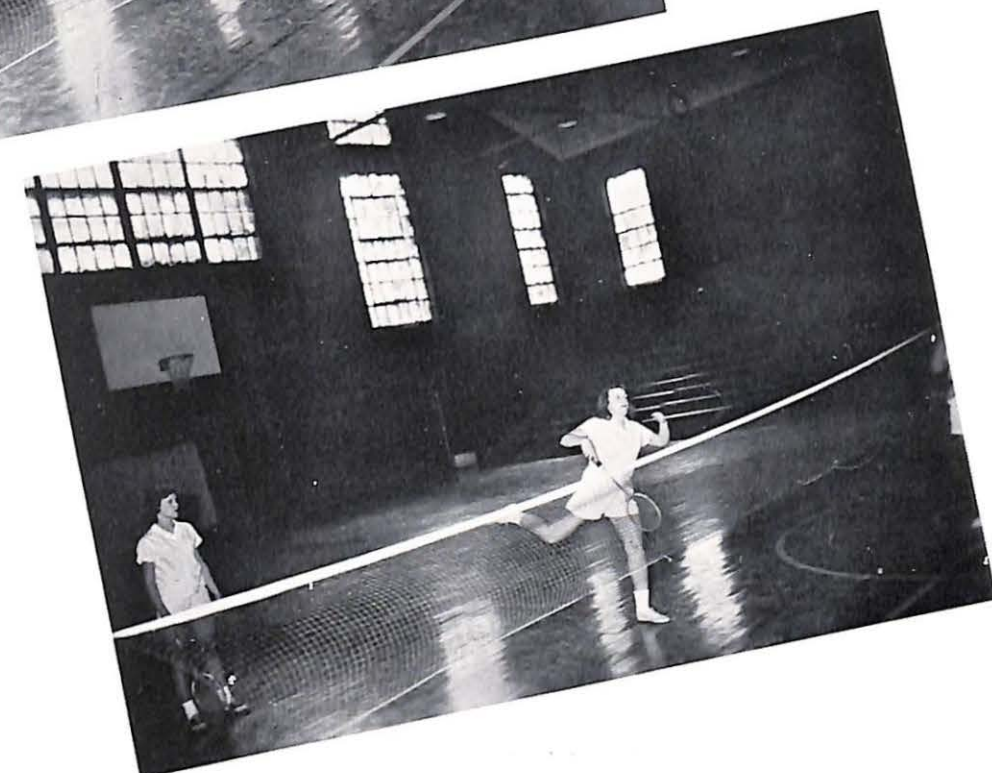
- President Pat Houston
- Vice-President Jeanette Hickman
- Secretary-Treasurer Rosie Kilp
- Student Social Life Committee
- Member Rachael Puyear
- Sponsor Mrs. Ralph Duggins



Teacher and Assistant



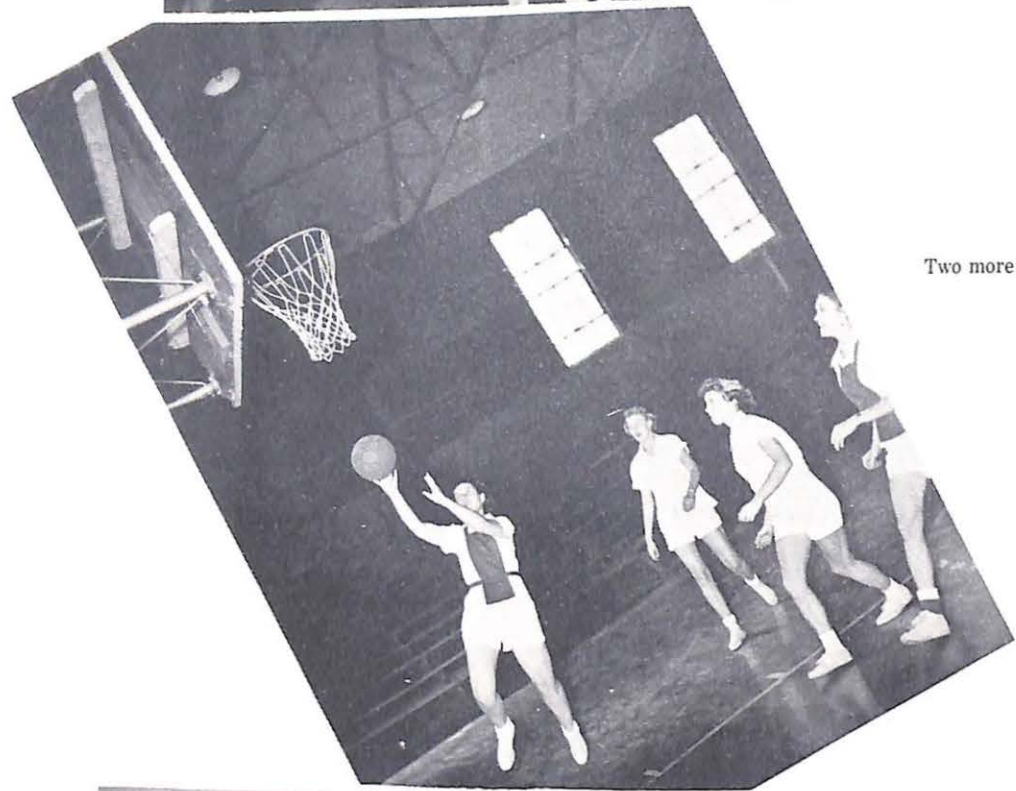
"Reach, up, up, up"



Wham and it's over



But, but—we want it



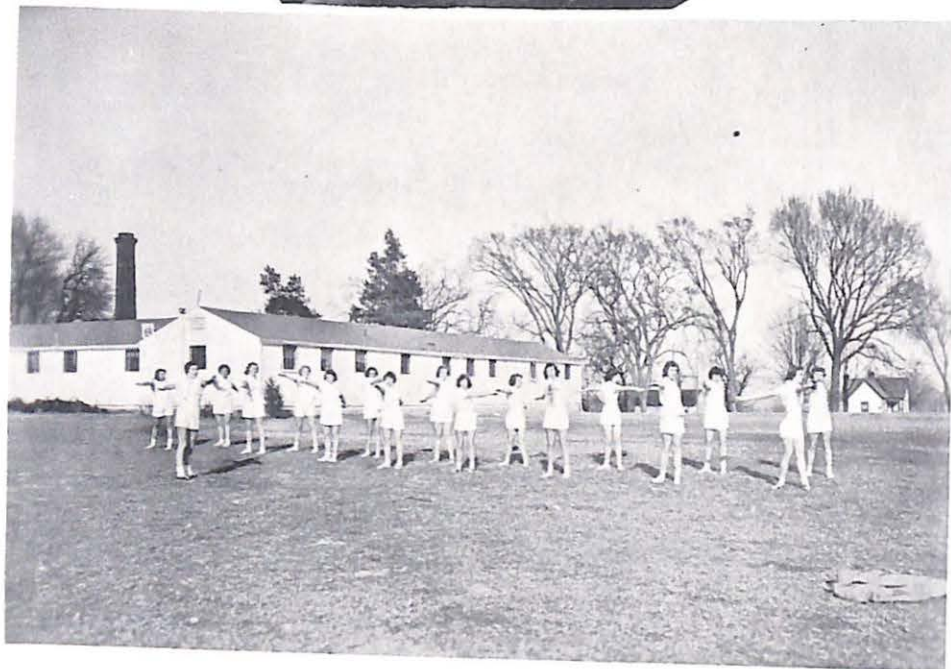
Two more points



1-2-3—Watch out!!



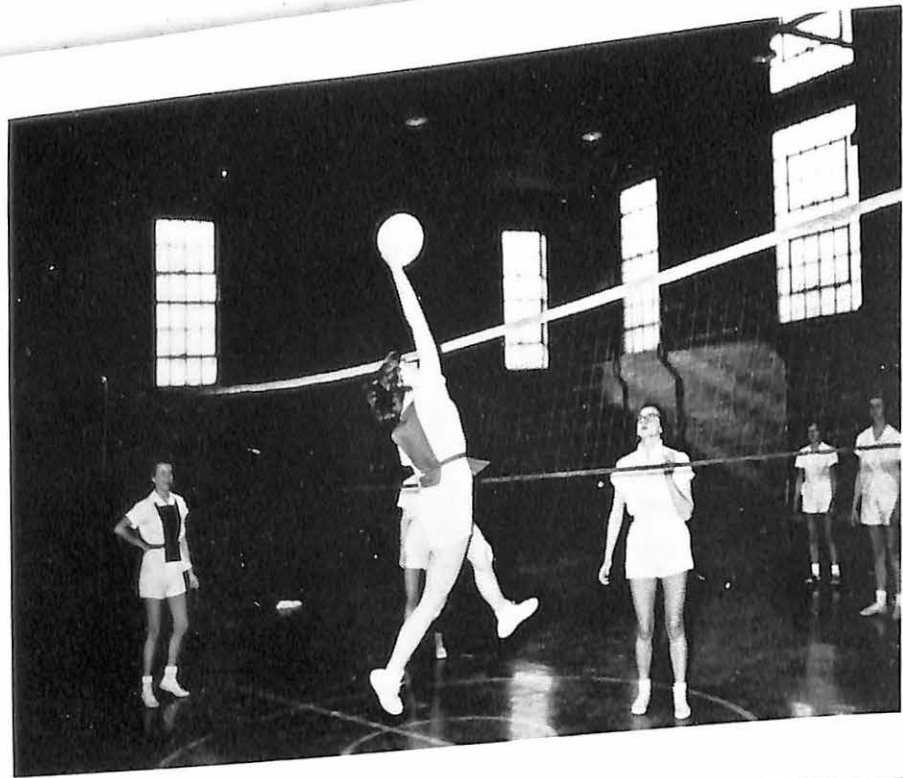
Mouths open



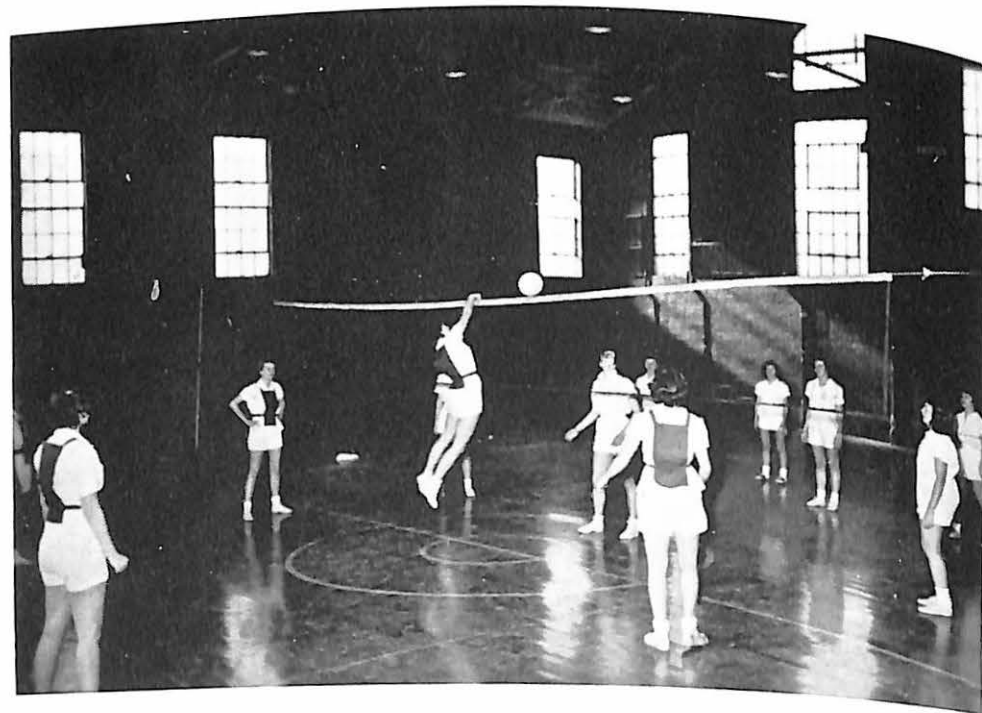
If these only did some good



What is it?



"Jump-stop"



She spiked it



Arm straight, shoulder level



Front row left to right: Gilham, Jensen, Kilp, Steers, Bredberg; Second row: DuSold, Brahm, Hendrix, Stade, Roscher, Ogdon.

CHEERLEADERS



Victors over Evansville

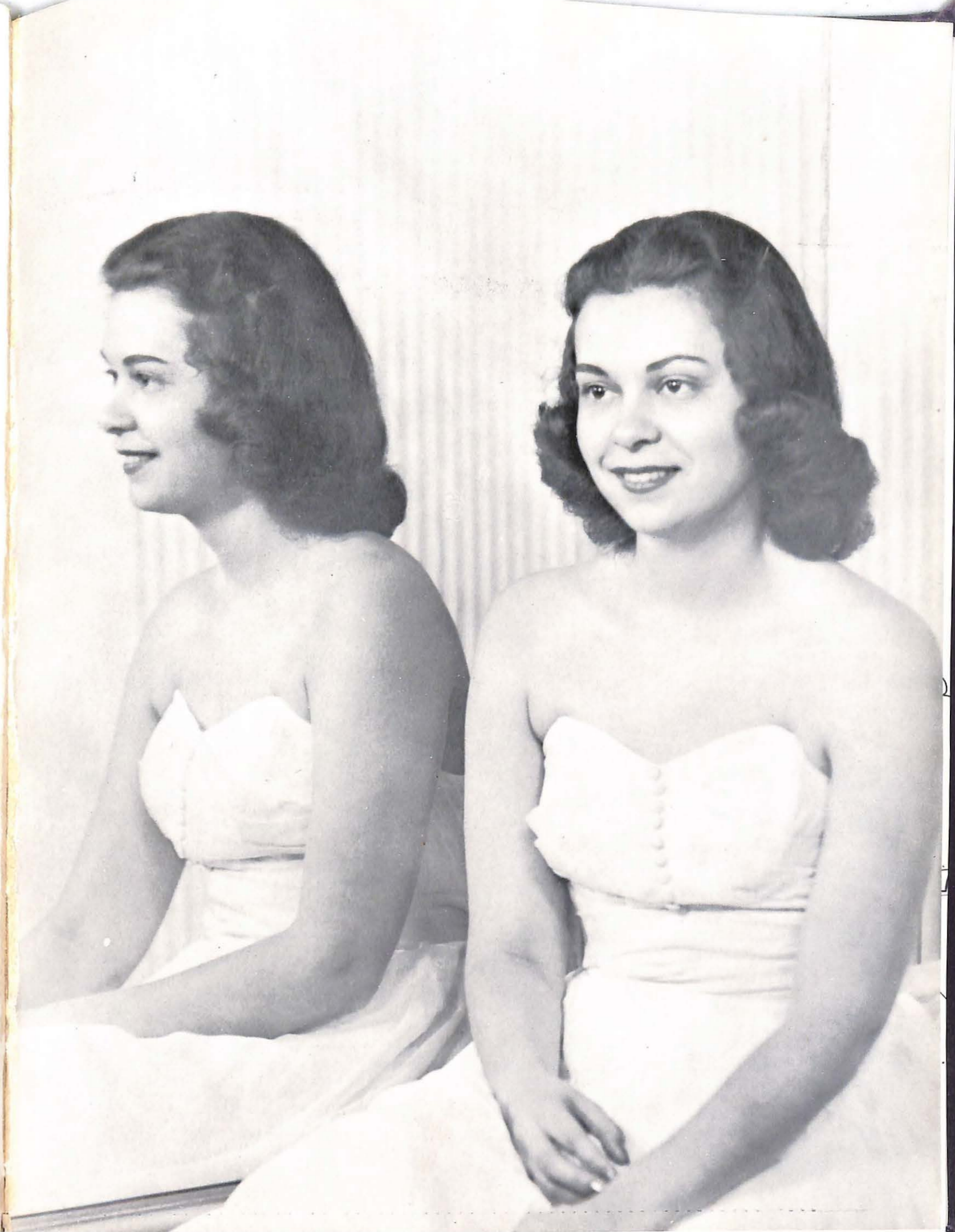


*Jeanette Hickman
May Queen Attendant*

*Lois Hough
May Queen*



*Barbara Jensen
May Queen Attendant*





President's Reception



Little Bill Nichols



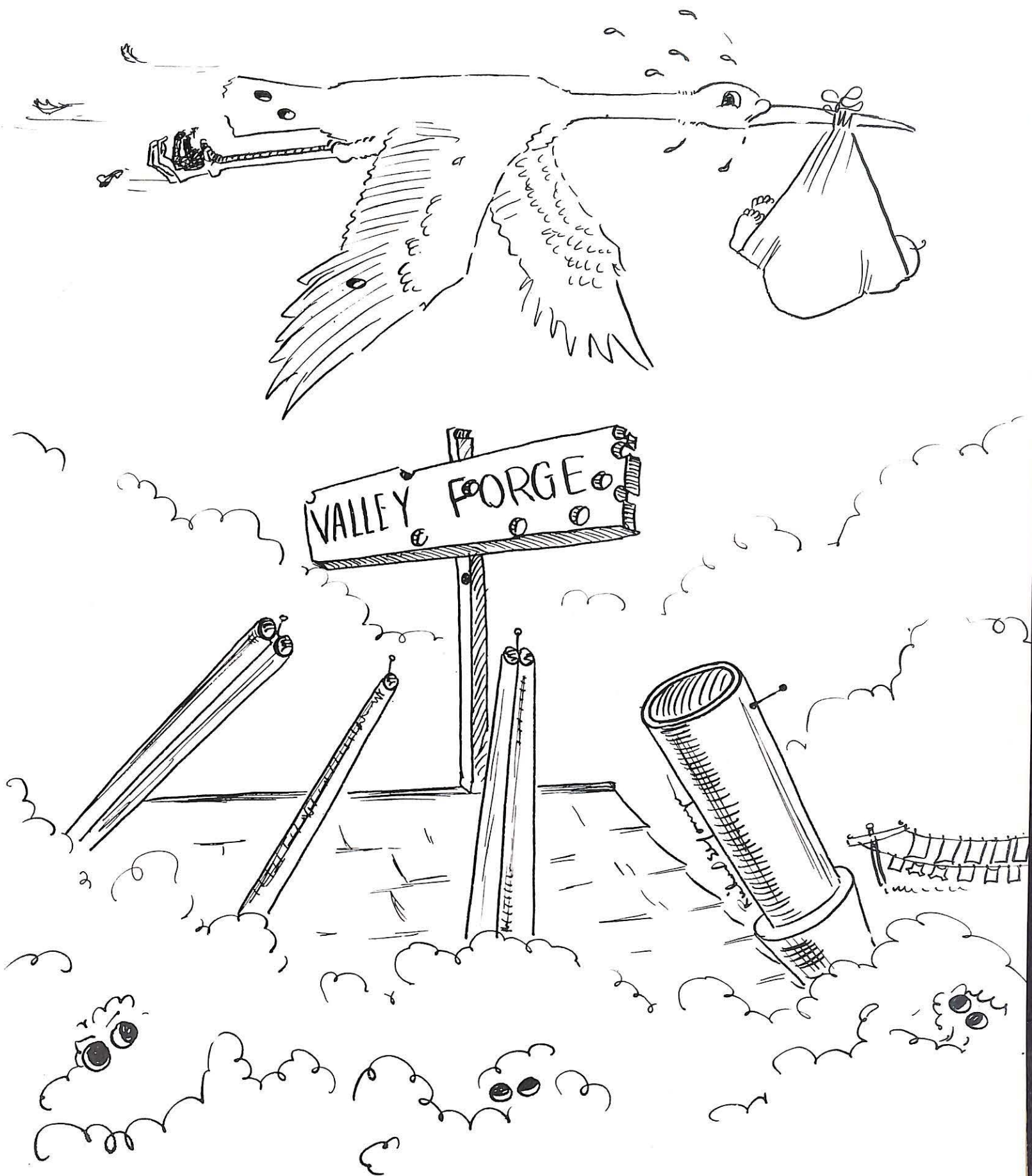
Chip-Chip



The Inspectors



Super Salesman



Unit One



Calvin and Jean Hayden



Charlie and Ruth Huff and youngsters



Jerry and Doris Turner with Taffy



The Leo Whites and in-laws

Unit Two



Grace and Ed Penn

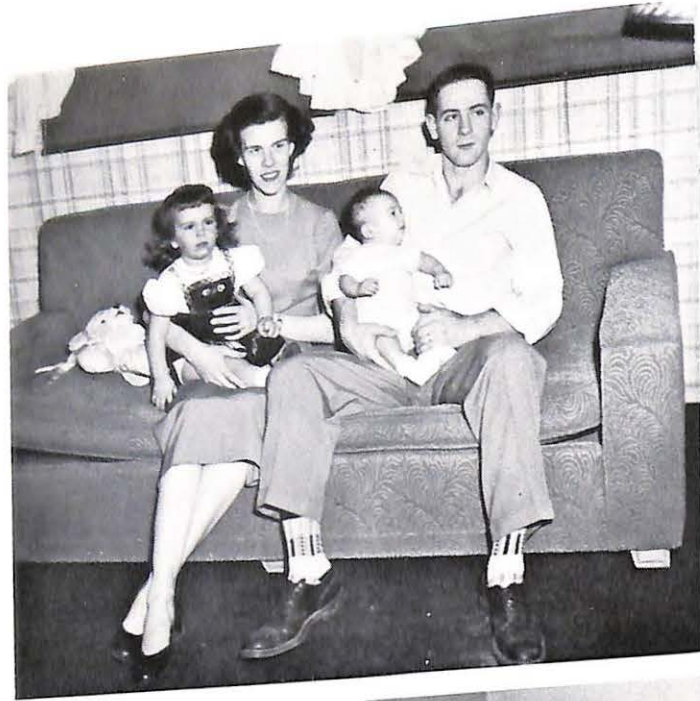


Luke and Sissy Scavuzzo



Luetta and Charlie Pearson

Unit Three



Martha and Forrie Arnall and children



The Joe Fowlers



Marschall and Carmen Wyatt

Unit Four



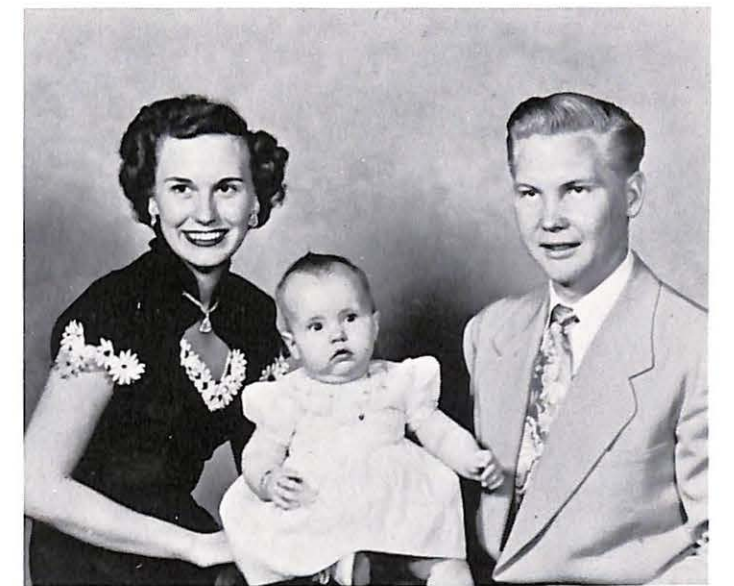
Nelson, Martha Sue and Shirley Thompson (Scotty is on the shelf)



Ginny and Bert Tabor



Gloria and Bud McKenzie



Laura and Art Varsnick and daughter

Unit Five



Charlotte and Dean Nelson



Mae and Everett Bacon and family



The Art Johnsons



Julia and Joint Hendrix

Unit Six



Midge, Robert and Billy Nichols



Dottie and Omer Runyan



Pat and Mike McDade



Reg. Bobby and Bob Jensen

Unit Seven



The True Robbins family

Lyle and Yvonne Dilley



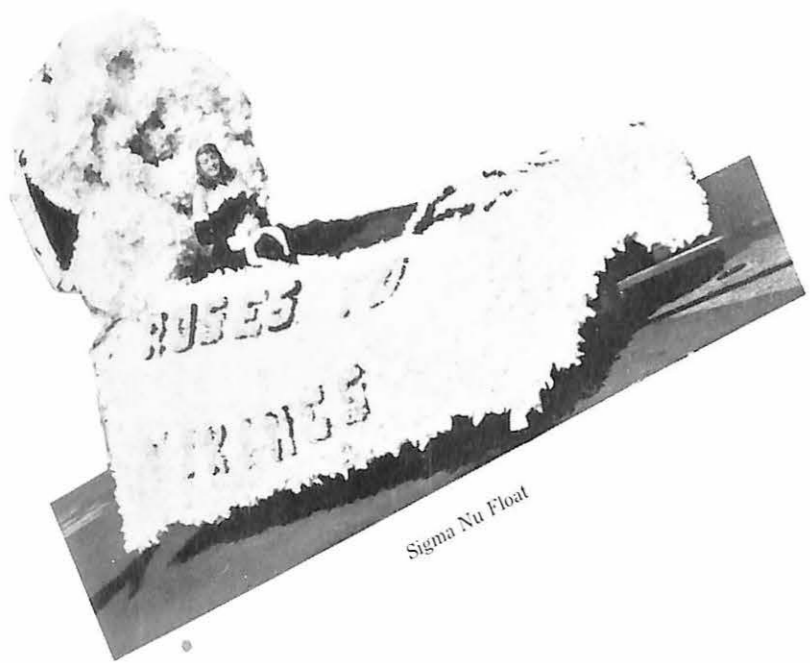
Don Fields, baby and wife



The Huskey trio

Short

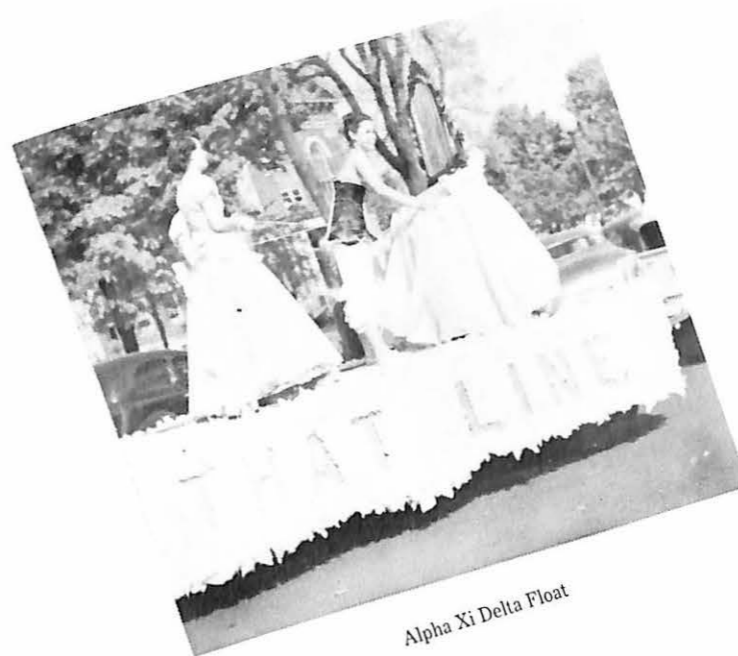
Shootin'



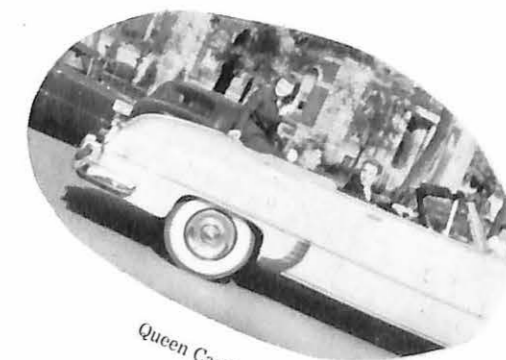
Sigma Nu Float



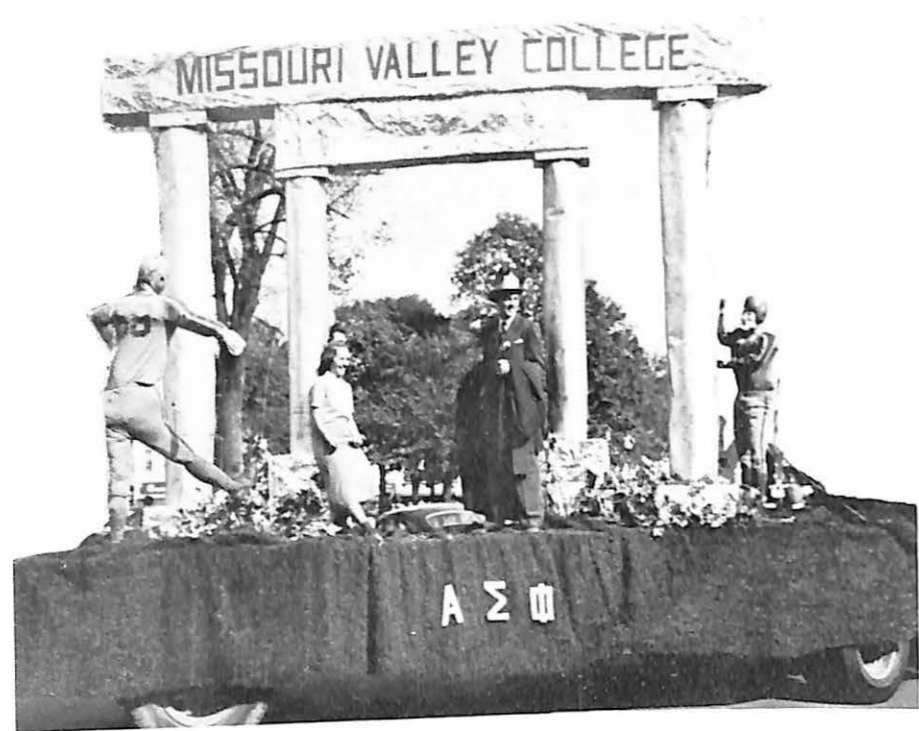
The Queens



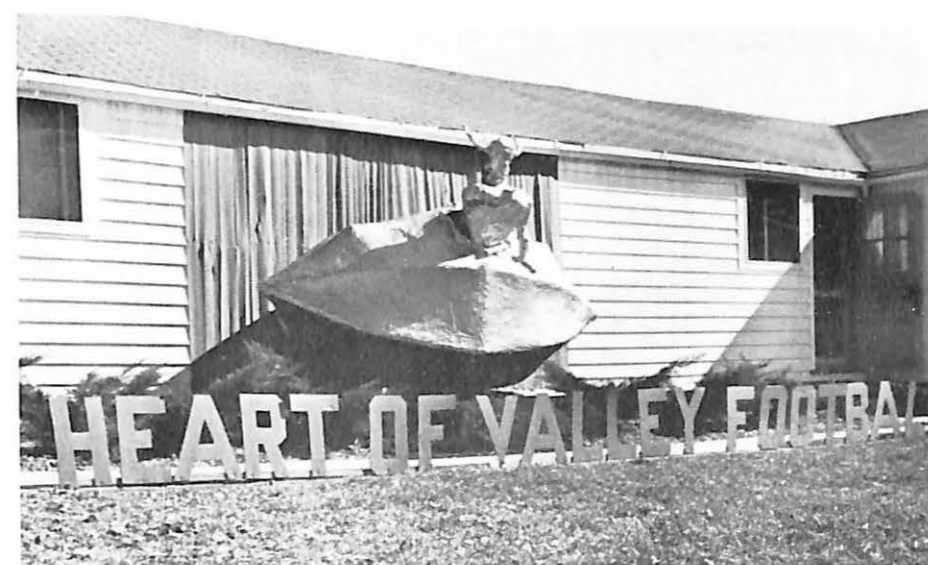
Alpha Xi Delta Float



Queen Carol



Alpha Sigma Phi Float



New Dorm Prize Winner

The Wheels!



Alpha Phi Omega Float



Valley Players Float



This One is Required



Ain't Love Grand



Alpha Sig Sweetheart



Modern Methods



Young Hall Housemeeting



Money Bags



Grin and Bear It



Cheese Cake



Ain't They Cute!



The Hatter Five



He-Men



You're Mine Now



Marital Serenaders



Shorty the Dwarf



Best Dressed



Po Unfortunate Males!



Registration



Frosh Bury Emporia



Jingle Bells



Motley Crew



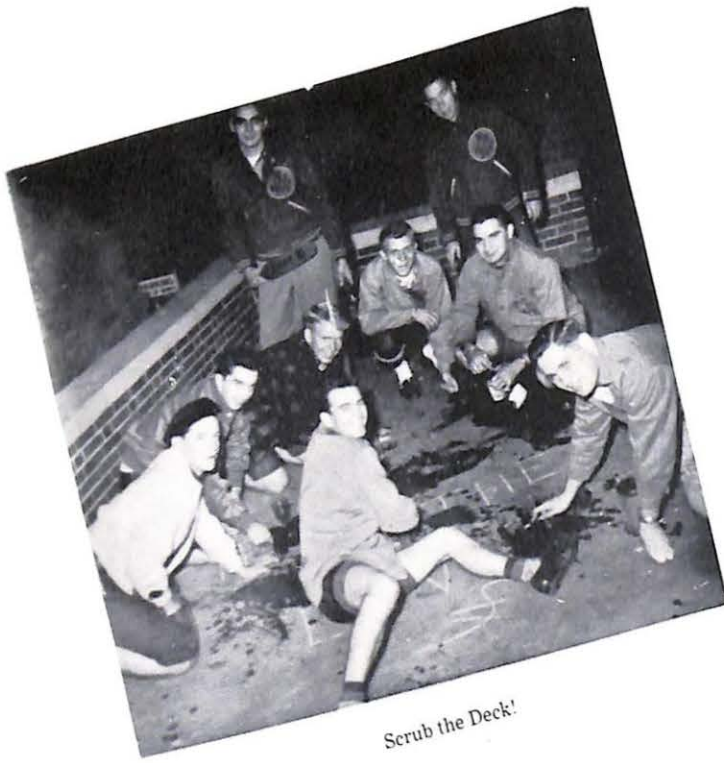
The Pride of the Office



Little Store Maybe?



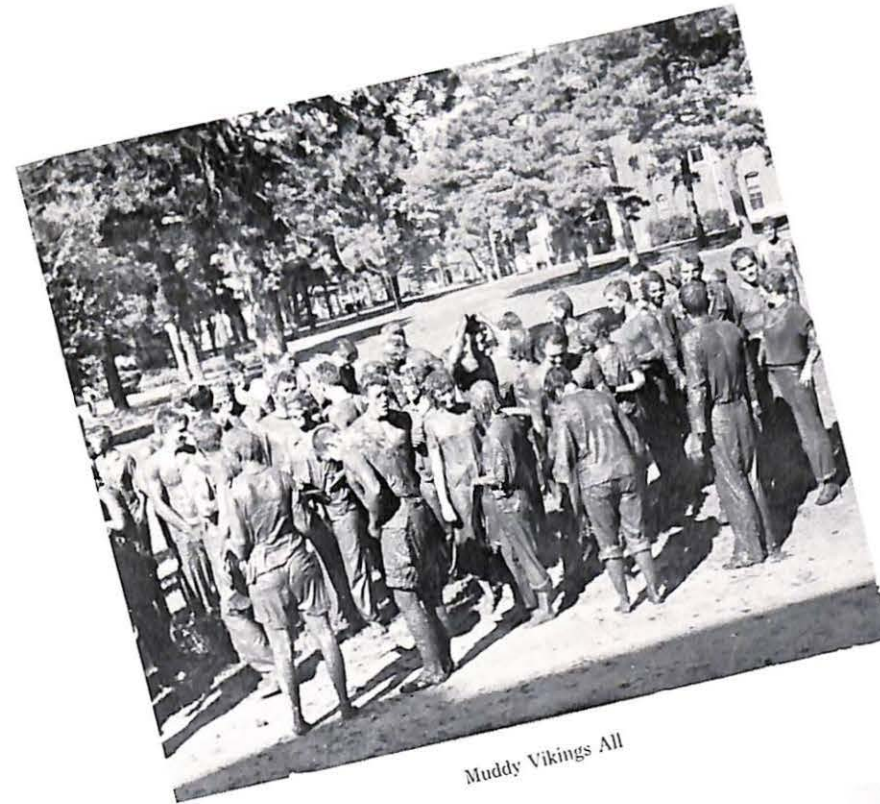
Saline Slopsters



Scrub the Deck!



Hairy Ape



Muddy Vikings All



Mud Hole Gang



Working Men?



Just Filler



It's On the House