

MISSOURI VALLEY COLLEGE



3 7010 00239642 8

*The*  
SABIDURIA

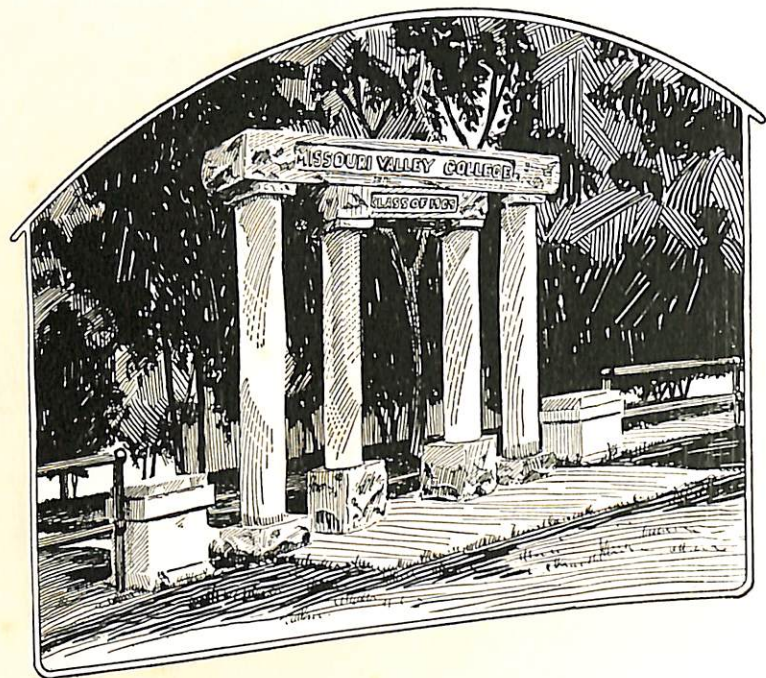


1927



PROPERTY OF MURRELL LIBRARY  
MISSOURI VALLEY COLLEGE  
MARSHALL, MO 65340

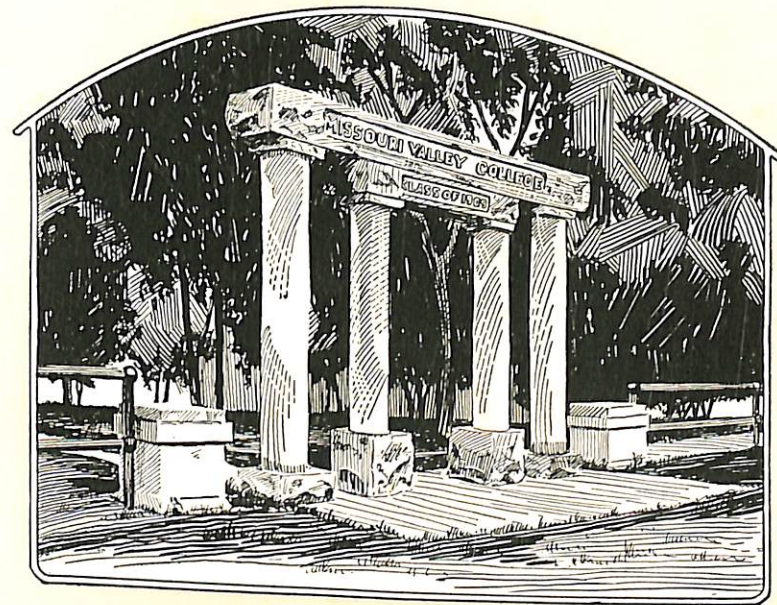
THE  
SABIDURIA  
1927



# THE SABIDURIA 1927



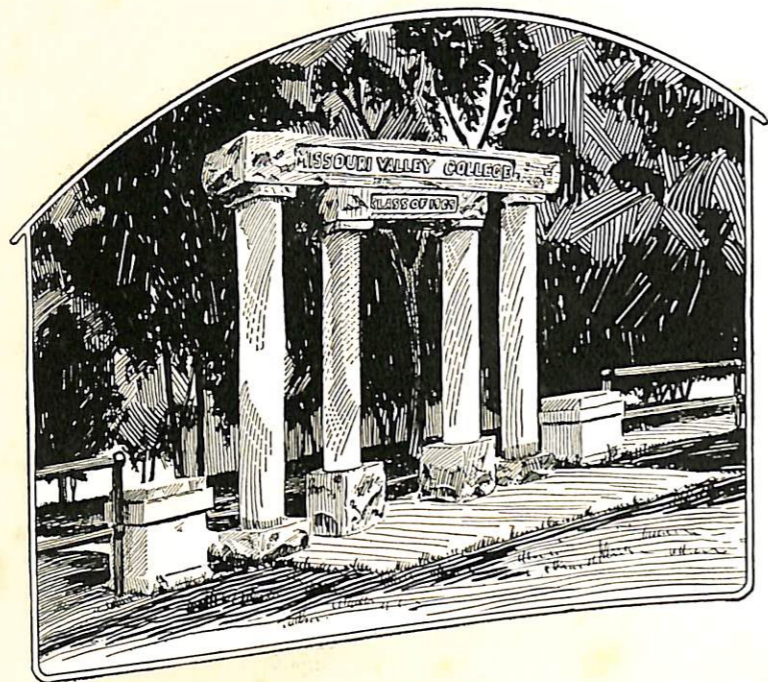
*Published by*  
THE UNIT CLUB of MISSOURI  
Valley College  
MARSHALL, MISSOURI



## FOREWORD



IT HAS been the endeavor of the Staff in building this 1927 Sabiduria to present student life as it exists, to recall happy hours, associations, activities, and achievements of the Student Body, which will increase devotion to the halls of Missouri Valley College.

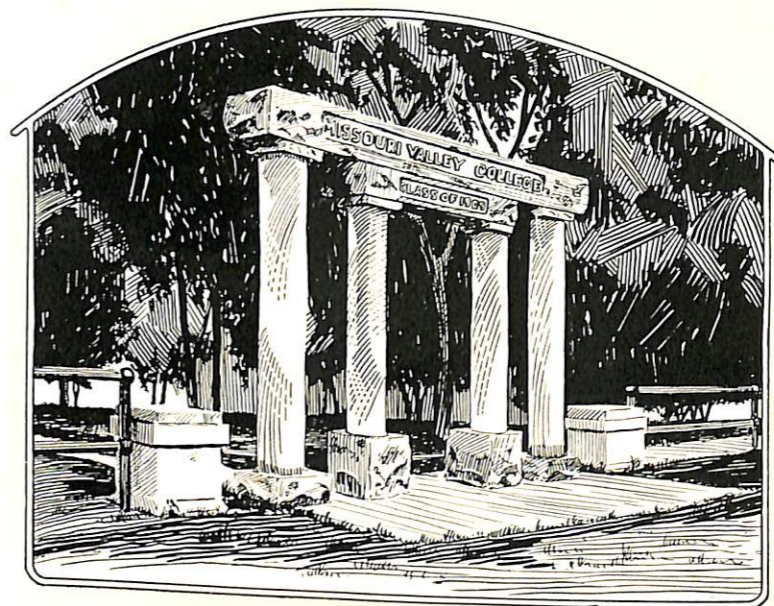


## DEDICATION



IN RECOGNITION of one whose years of unselfish service, of tireless efforts for the upbuilding of Missouri Valley; whose personality and deep interest have endeared him to the hearts of the Missouri Valley students and friends, we affectionately dedicate this volume of the Sabiduria to

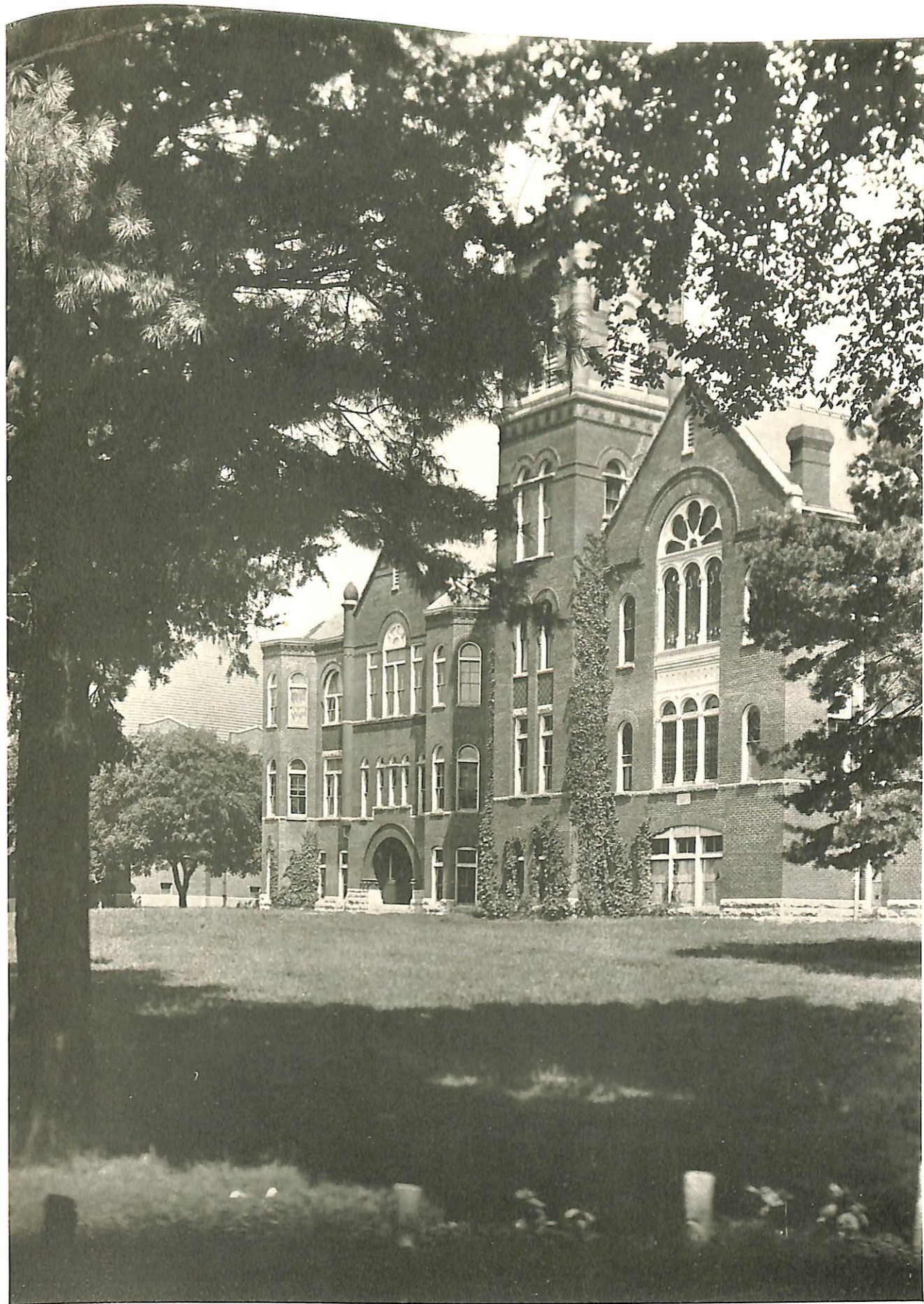
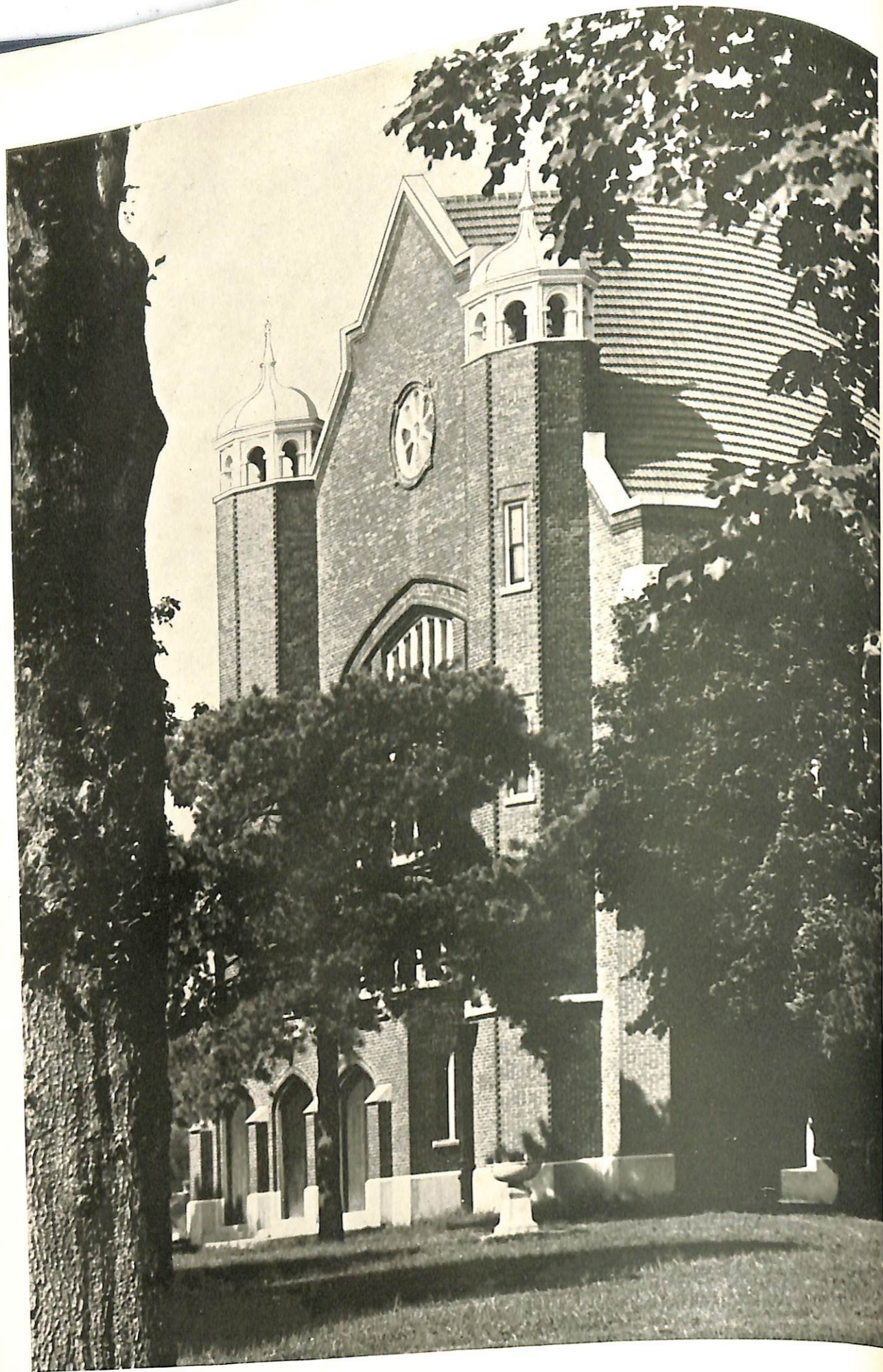
DR. GEORGE P. BAITY



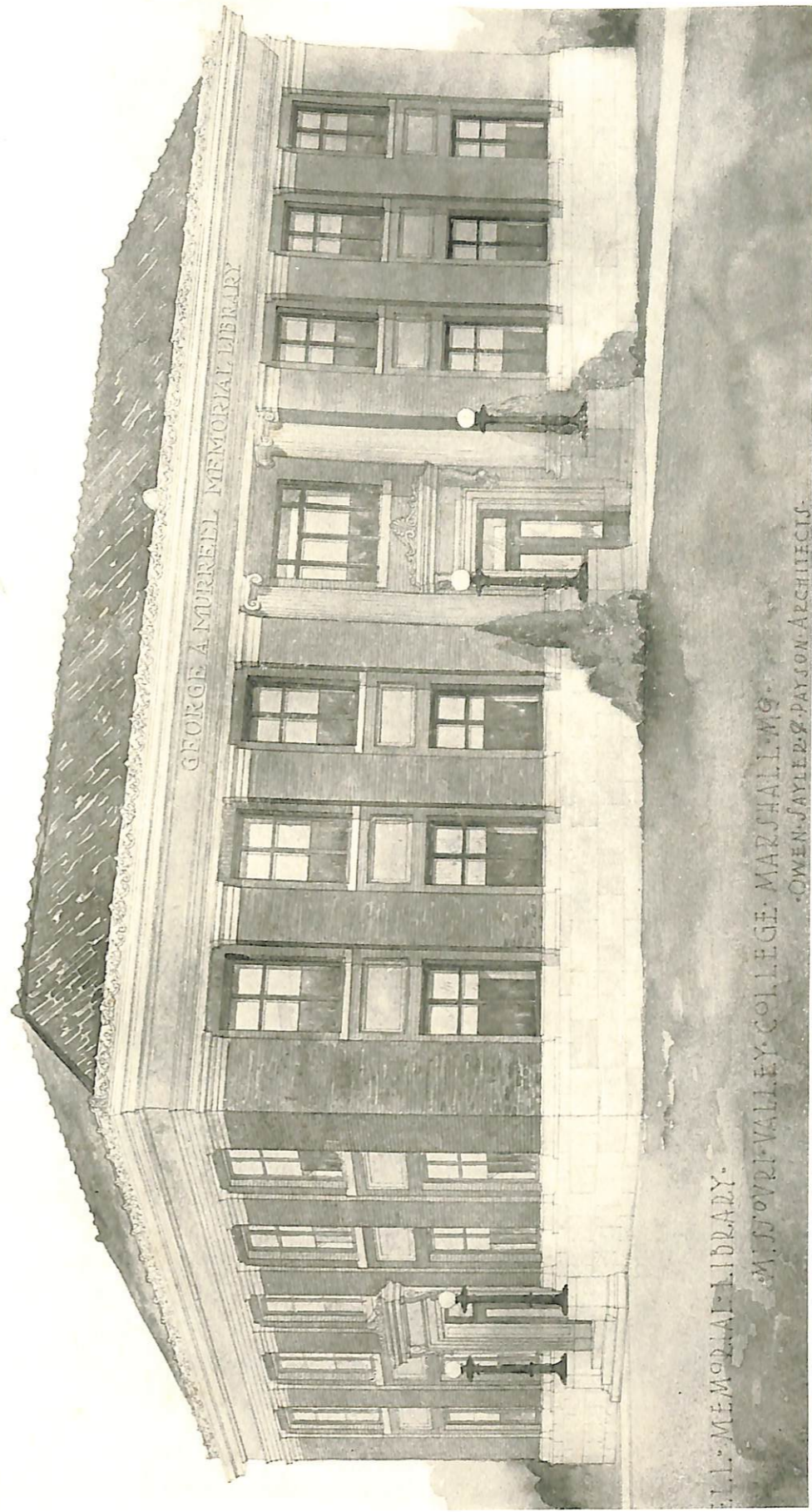
## ORDER OF BOOKS



VIEWS  
QUEENS  
ADMINISTRATION  
CLASSES  
ATHLETICS  
ACTIVITIES







ELL. MEMORIAL LIBRARY.

M. JOVRI VALLEY COLLEGE. MARSHALL, W.V.

OWEN JAYLES & PAYSON ARCHTCS.



MISS NORMA PUTNAM  
*May Queen*



MISS MAUDE WHITWELL  
*Senior Queen*



MISS DOROTHY DOANE  
*Junior Queen*



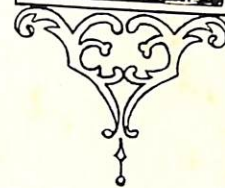
MISS EDNA HUTCHERSON  
*Sophomore Queen*



Miss DORIS BELLAMY  
*Freshman Queen*



ADMINISTRATION



Missouri Valley



WILLIAM HENRY BLACK, A. M., D. D.,  
Lit. D., LL. D.  
*President of Missouri Valley College*

DR. GEORGE P. BAITY graduated from Missouri Valley College in 1891, and since that time has carefully watched and followed the steps his Alma Mater has taken in her growth and activities.

During the thirty-three years of his pastorate at the Westport Presbyterian Church in Kansas City, Mo., Dr. Baity has constantly encouraged young people to attend Missouri Valley College, and has interested many men and women in her welfare.

As President of the Board of Trustees, Dr. Baity's loyalty, enthusiasm, and outstanding executive ability have secured for the College the good will and financial assistance of friends and Alumni.



GEORGE P. BAITY, D. D., LL. D.  
*President of the Board of Trustees*



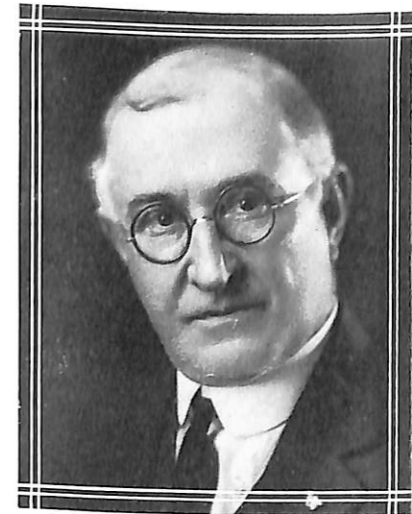
SAMUEL R. BRADEN, Ph. D.  
*Acting President, Dean*



IVAH MERWIN BARRETT, A. B.  
*Dean of Women, English Literature*



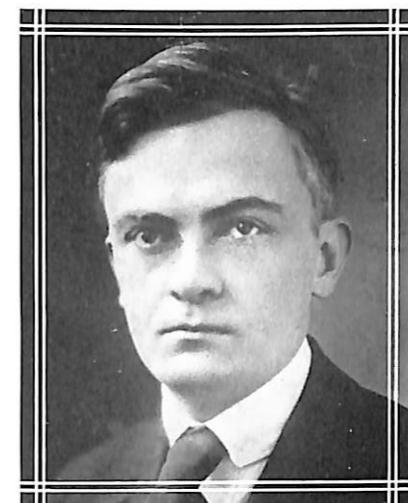
JOHN J. DYNES, A. M.  
*Registrar, Education, Psychology*



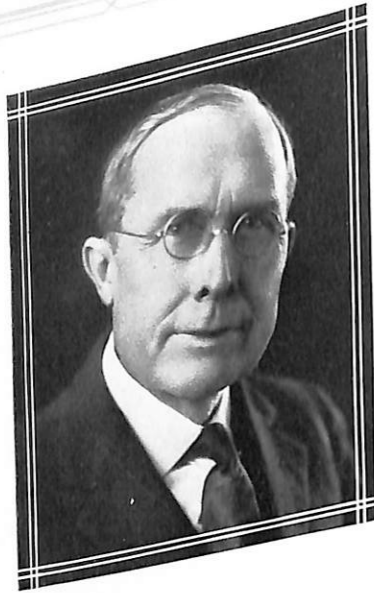
ISAAC NEWTON EVRARD, A. B., A. M.  
*English, Language, Literature*



ANNA VON TOBEL, A. M.  
*Spanish*



RODGER F. GEPHART, A. B., A. M., Ph. D.  
*French*



ALBERT MCGINNIS, A. B., A. M., Litt. D.  
*Classical Languages, Philosophy*



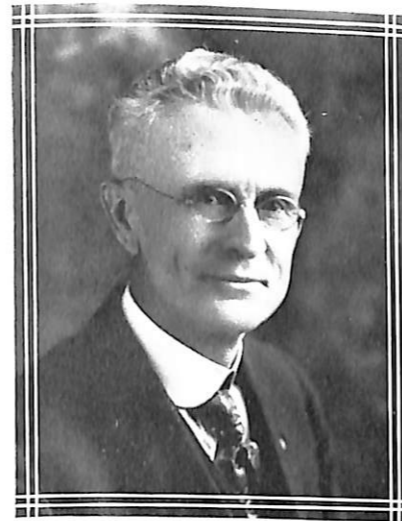
ARNOLD H. LOWE, A. B., S. Th. M., B. D.  
*Student Pastor, Bible*



JOHN MOORE PENICK, A. M.  
*History*



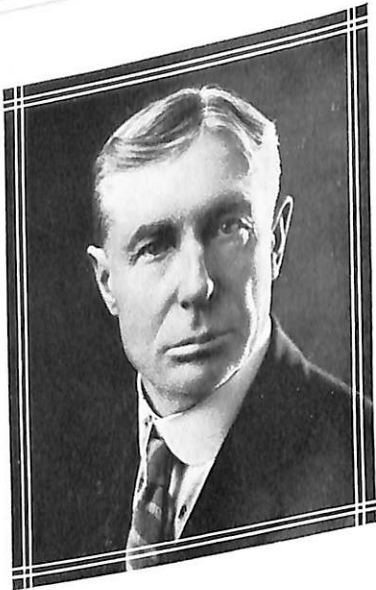
EARL PETTIJOHN, Ph. D.  
*Chemistry, Physics*



BENJAMIN L. SEAWELL, B. Pd., B. Sc.  
*Biology*



WILLIAM IRA FERGUSON, A. M.  
*Mathematics*



ROBERT L. SHEPHERD, A. B., D. D.  
*Sociology, Economics*



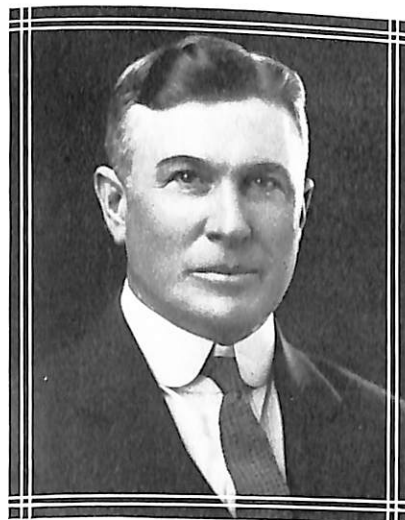
PALMER T. HOGENSON, M. B. A.  
*Sociology, Economics*



ADA DINSMORE, M. S.  
*Home Economics*



CLAUDE L. FICHTHORN, A. B., Mus. B.  
Associate American Guild of  
Organists  
*Piano, Voice, Pipe Organ, Theory*



ARTHUR TIPTON VAWTER, Mus. B.  
*Violin, Wind Instruments*



HENRI RENILE GODFRIAUX, A. E.  
*Physical Education*



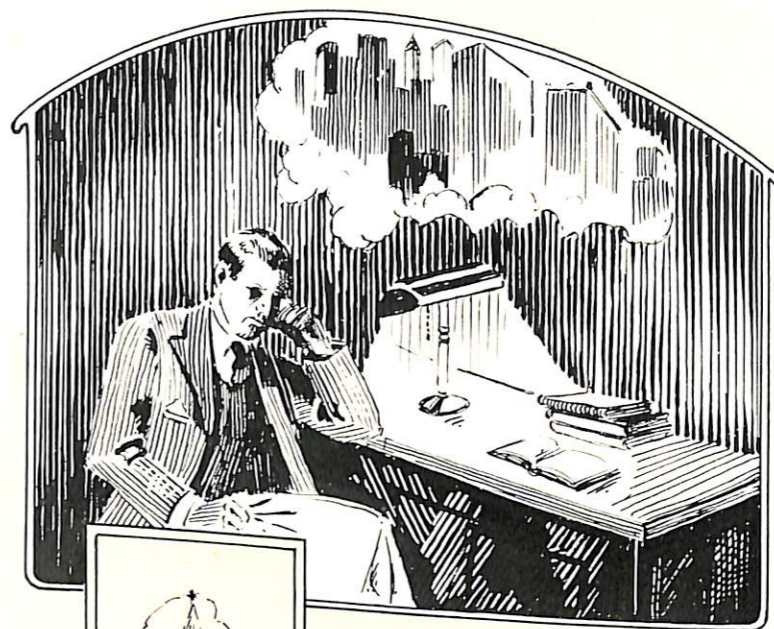
STELLA B. HICKS, M. Litt.  
*Librarian*



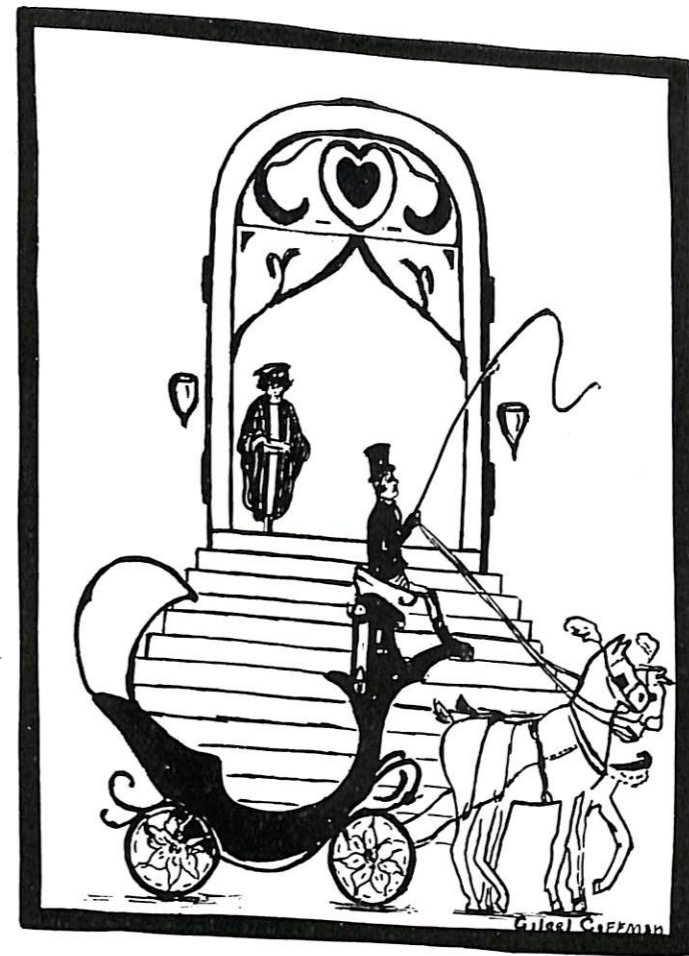
CARL I. DUNCAN, A. B.  
*Executive Secretary*



ROY W. NOLTE, A. B.  
*Field Secretary of Missouri Valley College*



CLASSES



# SENIORS

The SABIDVRIA

All alone I sit here dreaming,  
Slave again to open firelight  
As the world is and the shadows  
Come and go forever tracing  
Scenes and faces in my hearthfire,  
Figures from the long ago.

#### ONE PIPE

Hazily there comes an autumn,  
Famous fall of three and twenty  
When upon the great adventure,  
More than three score strong, we started,  
Braved the stern envisaged Ikie  
And became a part of Valley.  
Neophytes we were and showed it  
But we learned ere long to hide it  
'Neath our green hats and our greasepaint,  
Learned the College songs and sang them,  
More or less; and went to parties,  
At the Faculty's direction,  
We became most literary;  
Joined the clubs of Glee and Drama,  
In our classes were proficient,  
Favored Doctors Lowe and Shepherd  
In their "Bible" and their "Europe"  
And we all took Freshman English  
While a few tried Greek and Latin  
And we made a Viking Banner,  
Golden ship on royal purple,  
Sunset's colors, and the emblem  
Higher flew than any banner.  
Faithfully we followed after  
While the Vikings caged the Eagle,  
Caged the Bluejay and the Redbird,  
Tamed for once the Bear and Panther,  
While our classmates served most nobly.  
How we always went to chapel!  
There we made proud Pick our leader;  
There elected queenly Marg'ret;  
Doctor Stone there one day told us  
To "Believe and Doubt Sincerely."  
And we heard there times unnumbered  
How on us the world depended.  
Had one gorgeous get-together  
Down at Ruth's house where we Freshmen  
Danced and played to Eva's music;  
Proved ice cream was bad for Soph'mores  
And discouraged their endeavor  
To cut short our evening's pleasure,  
How our interests would vary!  
We were sleuths when doors were stolen,  
Were "Round Table" knights and ladies,  
Or by contrast could be hoboes,  
But there came the sultry summer,  
Long hot dusty days of summer,  
So we all forsook our classes,  
Went to seek recuperation.

#### ANOTHER—

In the first days of September  
Came we back enthusiastic;  
Wielded paddles with a vengeance  
Which our elders named most brutal  
We again made Pick our leader  
And paid tribute to sweet Mabel,  
Mistress Barrett taught us English,  
All about the odes and sonnets,  
Joyous some, or fatalistic.  
Here a hard-boiled Mister Kenney  
Changed our class appearance somewhat,  
Emma threw her doors wide open  
For our gang to have a frolic,  
And we had one, most peculiar,  
Where the boys bought with their quarters,  
Boxes, girls spent dollars making,  
And our teachers gave a party

Featured by a home-made Movie,  
Villains—heroes—distressed damsels  
Such as Griffith never fancied!  
Was all playing? No! we answer,  
For ere we the year completed  
We had questioned Doctor Davis  
Of a Leader whose example  
Is a young heart's inspiration,  
But there comes again the summer,  
Comes the torrid wind of summer,  
And we cast aside our studies  
While we seek recuperation.

#### THE THIRD—

And we come back in September,  
(Now the days are passing faster)  
Took our Chapel seats as Juniors,  
How well we were christened Juniors,  
When kind Doctor Black said, gruffly,  
"You be still down there, you Juniors!"  
And we were still—for a moment,  
Which maid did we this year honor?  
She of quiet ways and queenly,  
She with eyes so blue. 'Twas Ruby!  
Frank had presidential worries,  
Such as buying rings for fifty;  
Such as whether syncopation  
Mixed with atmosphere religious;  
Which at last were overwhelming  
Which at last were on to Shelby,  
And he passed them on to Shelby,  
Played as kids on Coach's Play-Nights  
In the Gym, where other pleasures  
We made ours throughout the winter,  
And when May had come upon us,  
There we banqueted the Seniors,  
For their gaze unveiled the future,  
And the day before they left us  
Stole their clothing for a playlet  
Which was "Truth and Nothing But It."  
Once more comes the parching summer,  
Comes the blazing sun of summer,  
And we all forget our worries,  
Go to seek recuperation.

#### THE LAST.

Then we came back in September,  
Knowing that our days were counted;  
And resolved to live them fully,  
Moved about more dignifiedly  
E'en though it was seldom noticed,  
And elected Maude as Class Queen,  
She whose songs had often charmed us,  
On the gridiron, court, and diamond,  
Or, more often, on the sidelines,  
Played, again, the game for Valley!  
Now our ten tasks grow to hundreds,  
We must see about our credits;  
We must know our majors—minors;  
We must needs leave a memento  
That shall stand, the years defying,  
Parties—banquets—glad days—mad days,  
Days that sometimes tighten heartstrings,  
Days that wing their way more swiftly  
To the day we walk together  
Down the long, long aisle, black-hooded  
And receive our last assignment,  
How that echo grows upon us  
"Not to die but live for thee."

All alone I've been here dreaming,  
Now my fire lies dead before me,  
Yet before its life departed  
It had kindled fire within me  
Which shall burn, a Viking Beacon,  
As a pledge to all the Clan.

RUBY ASBURY  
Marshall  
Major English

"She moves a goddess and  
looks a queen."

Pres. Valkyr Club, Y.  
W. C. A. Cabinet, Dra-  
matic Arts Club, Houx-  
onian Literary Society,  
English Club, Junior Class  
Queen, "The Charm  
School," "The Lottery  
Man," "Old Days in  
Dixie."

ALICE GILLUM  
Barnett  
Major English

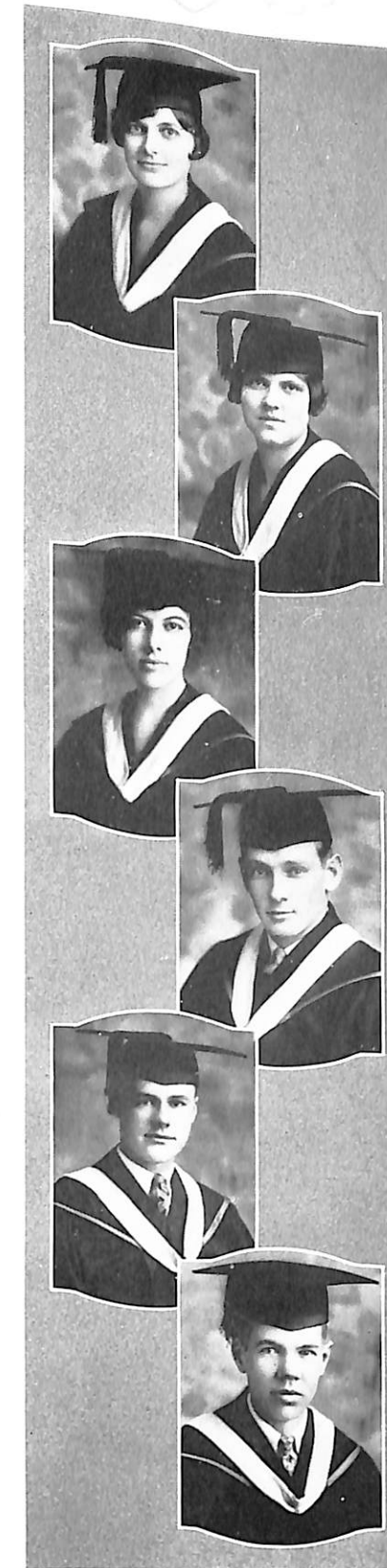
"I have had a rare vision,  
I have had a dream,—past  
the wit of man to say what  
dream it was."

Dramatic Arts Club, Y.  
W. C. A. Cabinet, Eng-  
lish Club, Hi Beta Steppo,  
Choral Club, Bairdean  
Literary Society, The  
Literary Society.

H. H. HARRIS, JR.  
Marshall  
Major English

"He wears the rose of  
youth upon him."

Dramatic Arts Club,  
Glee Club, Quartette, As-  
sociate Valkyr, English  
Club, Orchestra, Y. M.  
C. A., Houxonian Liter-  
ary Society, Tennis, Track,  
H a n d b a l l, "The Thir-  
teenth Chair," "The Full  
House."



HELEN E. EHRNMAN  
Marshall  
Major English

"'Tis the mind that  
makes the body rich."

Dramatic Arts Club, Y.  
W. C. A., Choral Club,  
Hi Beta Steppo, Houx-  
onian Literary Society,  
"The Lottery Man," "The  
Passing of the Third Floor  
Back."

LOUIS A. HARLAN  
Salisbury  
Major English

"Good sportsman means  
good fellow, sound-hearted,  
he, to the center."

Y. M. C. A. Cabinet,  
Glee Club, Debating, Pres.  
Senior Class, Business  
Mgr. Sabiduria 1927, Foot-  
ball.

MONTAGUE HARVEY  
Marshall  
Major History

"I shall tread in the  
footsteps of my illustrious  
predecessors."

Houxonian Literary  
Society, Forum, The Liter-  
ary Society, Dramatic Arts  
Club, Tennis, "The Thir-  
teenth Chair."

ROXIE HAYES  
Marshall  
Major English  
*"I am sure care's an enemy to life."*  
Dramatic Arts Club, Y. W. C. A.



ELLA INGRAM  
Marshall  
Major History  
*"Strong in will and rich in wisdom."*  
Y. W. C. A., Basket Ball, Bairdean Literary Society.

EDNA MABEL KNAPP  
Kansas City  
Major English  
*"The only way to have friends is to be one."*  
Valkyr, Pres. Y. W. C. A., Dramatic Arts Club, Pearsonian Literary Society, House Pres., House Council, Literary Society, Glee Club, Sophomore Queen, "The Lottery Man."

CAMPBELL HIXSON  
Webster Groves  
Major English  
*"He is good as long as he is pleased—and so is the devil."*  
Director Men's Glee Club, Y. M. C. A. Cabinet, Bairdean Literary Society, Gospel Team.

ESTHER RUTH KEIRN  
Marshall  
Major English  
*"It is good to be both merry and wise."*  
Y. W. C. A.

CECIL W. LAY  
Higbee  
Major English  
*"A good heart's worth gold."*  
Dramatic Arts Club, Pearsonian Literary Society, Orchestra.

ROY CHARLES LINBERG  
St. Louis  
Major English  
*"There is no fire without some smoke."*  
Championship Football Team '23, Student Body President '27.



MARGARET MCQUIDDY  
Marshall  
Major English  
*"Laughing cheerfulness throws sunlight on all the paths of life."*  
Valkyr, Bairdean Literary Society, Y. W. C. A., Freshman Queen, Dramatic Arts Club, "The Charm School."

VIRGINIA B. NICHOLS  
Marshall  
Major English  
*"All words are pegs to hang ideas on."*  
Hi Beta Steppo, Y. W. C. A., Constitutional Essay, 1925.

LOUIS LOCKRIDGE  
Roanoke  
Major Mathematics  
*"There is no need of arguing with the inevitable."*  
Pearsonian Literary Society, Y. M. C. A., Varsity V Club, Baseball, Basket Ball, Football.

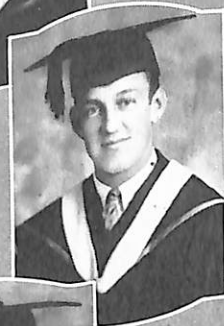
LOUISE E. MILLER  
Marshall  
Major English  
*"O wonderful, wonderful, and most wonderful wonderful; and yet most wonderful."*  
Valkyr, Houxonian Literary Society, Delta Staff, College Orchestra, "Pep" Orchestra, Tennis.

ROY PALMER  
Clifton Hill  
Major Social Science  
*"It's nice to be natural, if you're naturally nice."*  
Glee Club, Orchestra, Music Club, Band, Associate Valkyr, Kirksville Teachers' College '24, '25, '26.

MAUDE PATTERSON  
Marshall  
Major English

"One tongue is sufficient  
for a woman."

Hi Beta Steppo, Adv.  
Mgr. Sabiduria 1926, Y.  
W. C. A.



WM. O. PICKERING  
Chicago, Ill.

Major English

"Thy mind is a very  
opal."

Varsity V Club Pres.,  
Y. M. C. A., Dramatic  
Arts Club, Sabiduria Staff,  
Pres. Freshman and Soph-  
omore Classes, Football,  
Baseball.

PEARL E. PRESTON  
Marshall

Major English

"Nothing worries her."  
Bairdean Literary Soci-  
ety, Music Club, Choral  
Club, Y. W. C. A., Dra-  
matic Arts Club.



CATHERINE STOFFER  
Lebanon

Major English

"Nature has given wom-  
en so much power that the  
law has very wisely given  
them little."

Central College '24, '25,  
'26.

MARY F. THOMAS  
Marshall

Major English

"Everybody says it, and  
what everybody says must  
be true."

Bairdean Literary Soci-  
ety, Music Club, Hi  
Beta Steppo, Y. W. C. A.  
Cabinet, Women's Ath-  
letics.



NELLIE JUNE VAUGHN  
Marshall

Major English and Music

"Music is a universal  
language. Where speech  
fails, then music begins."  
Orchestra, Art Club.

SARAH RUTH WALKER  
Marshall

Major Latin

Editor 1927 Sabiduria,  
Bus. Mgr. Girls' Glee  
Club, Y. W. C. A. Cabinet,  
Valkyr, Delta Staff, Dra-  
matic Arts Club, Bairdean  
and Houxonian Literary  
Societies, Orchestra,  
Choral Club, English Club,  
"The Charm School."



FLOYD B. WEHMEYER  
Malta Bend

Major Biology

"Good will is the mightiest  
force in the universe."

Forum, Track, Tennis,  
Basket Ball, Glee Club.

MAUDE WHITWELL  
Doniphan

Major English and Music

"The song that we hear  
with our ears is only the  
song that is sung in our  
hearts."

Bairdean Literary Soci-  
ety, Y. W. C. A. Cabinet,  
Associate Director Girls'  
Glee Club, Valkyr, Hi  
Beta Steppo, Dramatic  
Arts Club, Senior Queen,  
House Council, "Old Days  
in Dixie," "The Charm  
School."



EMMA LUCILE WILHELM  
Marshall

Major English

"Sometimes I have to  
giggle with a giggle, giggle,  
giggle; I don't know why I  
giggle, but I giggle just the  
same."

Houxonian Literary Soci-  
ety, Valkyr, Dramatic  
Arts Club, Y. W. C. A.

MARGUERITE WILSON  
Kansas City

Major English

"Individuality is every-  
where to be spared and re-  
spected as the root of every-  
thing good."

Bairdean Literary Soci-  
ety, Forum, Intercollegi-  
ate Debate.



SHELBY H. WILSON  
Marshall

Major Chemistry

"If I say so, it's so, even  
if it isn't so."

Men's Glee Club, Quar-  
tette, Bus. Mgr. 1926 Sabi-  
duria, Bus. Mgr. Delta,  
Pres. Bairdean Literary  
Society, Y. M. C. A. Cabi-  
net, English Club, Pres.  
The Literary Society.

EDWIN L. WITTRUP  
Marshall  
Major English

"Man, in sooth, mar-  
velous, vain, fickle, and  
unstable subject."  
Houxonian Literary So-  
ciety, Art Club, Delta  
Staff.



RUTH ZAHN  
Marshall  
Major French

"The wisest words she  
often speaks; the rest she  
leaves unspoken."  
Dramatic Arts Club,  
Music Club.

VIRGIL ZAHN  
Marshall  
Major Chemistry

"Everything comes if a  
man will only wait."  
Bairdean Literary Soci-  
ety, Dramatic Arts Club,  
Bus. Mgr. 1926 Delta, Y.  
M. C. A. Cabinet, Foot-  
ball, Tennis.



# JUNIORS

MARGARET L. ALT  
Norborne  
*"She measures her wealth  
by her friends, and she's  
considered wealthy."*



JENNINGS BIEBEL  
Marshall  
*"A quiet man. He  
doesn't snore in class."*

MABEL BROWNFIELD  
Pilot Grove  
*"The bird that flutters  
least is longest on the wing."*



GILEEL COFFMAN  
Marshall  
*"Nothing worries her."*

DOROTHY DOANE  
Marshall  
*"Mischievous, thou art afoot;  
take what course thou wilt."*



R. E. DREGER  
Edmonton, South  
Alberta, Canada  
*"Well, timid silence hath  
more eloquence than speech."*

CONTE CLAY FLEMING  
Marshall  
*"Her affinity changes  
with the moon."*



ELIZABETH GILLETTE  
Marshall  
*"I love not man; he's too  
simple."*

GLADYS G. GOLLONG  
Marshall  
*"Her voice was ever soft,  
gentle and low. An ex-  
cellent thing in woman."*



ELIZABETH GUTHREY  
Miami  
*"Smooth runs the water  
where the water is deep."*

NAOMI HARLAN  
Marshall  
*"The will to do and the  
soul to do."*



WILBURN O. HARMON  
Marshall  
*"Journeys end in lovers  
meeting."*

CHAS. FISHER  
 Marshall  
*"I, thus neglecting worldly ends all dedicated To closeness and the bettering of the mind."*



JOHN HERNDON  
 Blue Springs  
*"A small man with big ways."*

KATHRYN JOHNSON  
 Marshall  
*"The music soars within the little lark."*

RAY HARRE  
 Marshall  
*"Kindness in women, not their beauteousness, shall win my love."*

"DOT" HYLAND  
 Marshall  
*"Whosoever loveth me loveth my dog."*

PATRICIA H. LARKIN  
 Waverly  
*"There is a language in her eyes, her cheek, her lip."*

NADINE LEONARD  
 Marshall  
*"Cheerfulness, the character of common hope, is, is in strong hope, like glimpses of sunshine on a cloudy day."*



"PETE" MORGEY  
 Marshall  
*"It is not good for man to be alone."*

ESTELLE PALMER  
 Clifton Hill  
*"There is a kind of character in thy life That to the observer doth thy history fully unfold."*

DOROTHY "DOT" MCGEE  
 Jefferson City  
*"Don't let study interfere with your education."*

DORA LEE MORRISON  
 Russell, Kans.  
*"Has a mind of her own and knows how to run it."*

ELIZABETH PEMBERTON  
 Slater  
*"What she thinks she must speak."*

HURSTON PHILLIPS  
Marshall  
"There is no virtue like  
necessity."



JOHN F. PHIPPS  
Huntsville  
"Men of few words are  
the best men."



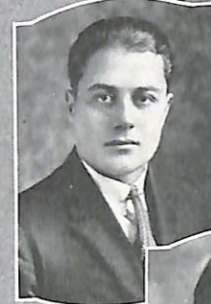
NORMA E. PUTNAM  
Marshall  
"I would applaud thee  
to the very echo  
That should applaud  
again."



ALLA MARIE REYNOLDS  
Slater  
"I speak in a monstrous  
little voice."



LESTER ROBB  
Wentworth  
"I'll take your word for  
faith  
Not ask thine oath."



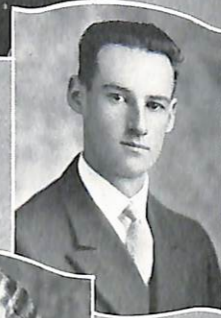
IONE SCHOOLEY  
Malta Bend  
"My salad days, when I  
was  
Green in judgments."



ROLLAND SNUFFER  
Kansas City  
"I would drown the  
stage with tears and cleave  
the general ear with horrid  
speech."



JAMES STAGE  
Concordia  
"Law, I did once have  
a college case."



MARGARET STEVENSON  
Boise, Idaho  
"Pleasures and actions  
make hours seem short."



FRANCES THOMPSON  
Marshall  
"Life without laughter is  
a dreary blank."



MARY WEBSTER  
Marshall  
"I'm young and innocent  
yet have a desire to be  
devilish."



C. J. WENZEL  
Marshall  
"Never mind, Old Boy;  
the best goods come in small  
packages."



RUBIEFERN HUDSON  
*Iola, Kans.*  
"The course of true love  
never did run smooth."



K. D. WILLOUGHBY  
*Farmington*  
"It's better to wear out  
than rust out."

RAYMOND FISCHER  
*Blackburn*

WINONA MERRITT  
*Slater*  
"Quietude is a virtue in  
itself."

ANNABEL BOOTH  
*Marshall*

LORENZO PARKER  
*Marshall*



# SOPHOMORES

CORINE BACON  
*Marshall*



HAROLD LAKIN BARNES  
*Marshall*



CHARLES BURKE, JR.  
*Hickman Mills*



EVELYN CLAYCOMB  
*Oak Grove*



ETHEL CLOUGH  
*Marshall*



ALLAN R. COFFMAN  
*Marshall*



KENNETH CONRAD  
*Prairie Hill*



HOWARD ECKES  
*Concordia*



FRANCES LOU FLEETHER  
*Alma*



JOHN DANFORD  
*Keokuk, Iowa*



GEORGE FISHER  
*Marshall*



CLAUDE MARKSBURY  
*Marshall*



JOE PRICE FRERKING  
*Corder*



SALLY JO HARPER  
*Butler*

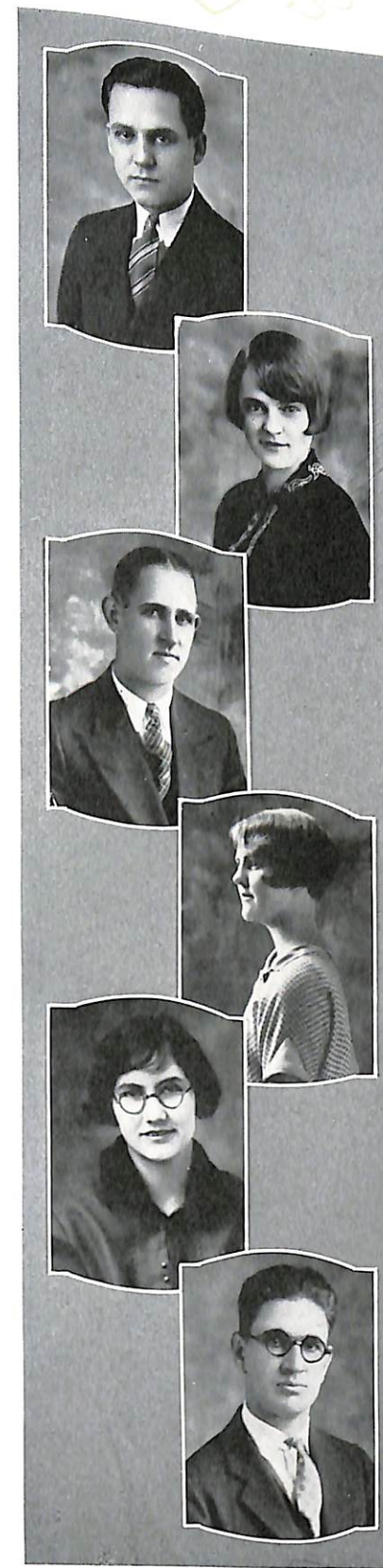
DOROTHY HAWKINS  
*Marshall*

MARY ELIZABETH HAYES  
*Marshall*

LAURA W. HENLEY  
*Sweet Springs*

REUBEN Y. HUME  
*Armstrong*

EMERSON G. HIGDON  
*Marshall*



EDNA HUTCHERSON  
*Shackelford*

W. W. HUTCHERSON  
*Marshall*

RUTH HUYETT  
*Marshall*

ALICE C. JACOBY  
*Marshall*

LAWRENCE H. JAMES  
*Clifton Hill*

W. R. LAMAR  
*St. Joseph*



EMILY MILES  
*Marshall*

E. G. MONTAG  
*New York, N. Y.*



MAURICE MORGAN  
*Marshall*

JACK PATTERSON  
*Marshall*



WAYNE M. PETHICK  
*Youngwood, Pa.*

HAZEL LOUISE POUCHER  
*Marshall*



MERIAM RENISON  
*Marshall*

NORVAL PAUL SCHAEFER  
*Sarcoxié*



CASSIE LOUISE SCHANZ  
*Blue Lick*

BERTHA MAE SHOOK  
*Marshall*



MARJORIE SNODDY  
*Miami*

CURTIS E. THOMAS  
*Marshall*



RALPH G. THOMAS  
*Nebraska City, Neb.*

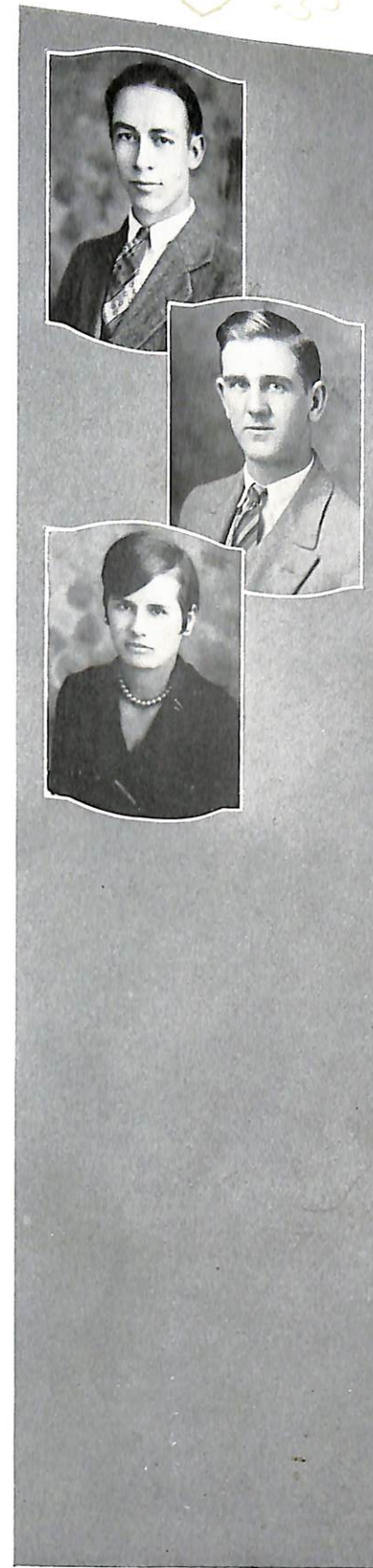
FRANCIS "KAYO" TRIMBLE  
*Lawton, Okla.*

FRED TWILLING  
*Marshall*

J. S. WALL  
*Marshall*

BERNICE WALTON  
*Kansas City*

JOHN P. WRIGHT  
*St. Joseph*

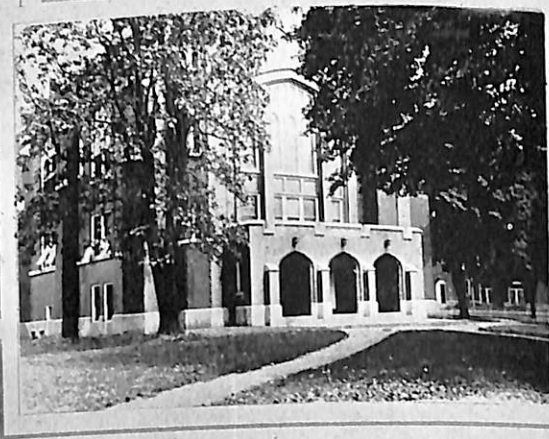


ORVILLE WRIGHT  
*Prairie Hill*

OLIVIA WINCHELL  
*Clinton*

ERNEST F. MALTER  
*Malta Bend*

HORACE "RED" SALYER  
*Lexington*



# FRESHMEN

The SABIDVRIA



PRESTON AMOS  
*Lexington*

CHARLES L. BACON  
*Marshall*

VEVA BARBER  
*Orrick*

MARY ELIZABETH BARNDS  
*Marshall*

ACIE BEALL  
*LaPlata*

DORIS BELLAMY  
*Slater*

HELEN BIERBAUM  
*Levasy*

ANNA MAE BIRCH  
*Independence*

ADOLPHUS F. BORBERG  
*Union*

EUGENE P. BRASHER  
*Orrick*

MARION E. BRIGHTWELL  
*Gilliam*

C. EDWIN BROWN  
*Marshall*

FRED BROWN  
*Gilliam*

WALLACE BUCK  
*Waverly*

PERCY BURCH  
*Jefferson City*

ROBERT CAMPBELL  
*Marshall*

MARY F. CARPENTER  
*Marshall*

ELIZABETH CHAPPELL  
*LaPlata*

MARY LOU CROSS  
*Roanoke*

HELEN CUNDIFF  
*Miami*

LO NETA DARROW  
*Golden City*

PALMER DAY  
*Clifton Hill*

MARY E. DOANE  
*Marshall*

GERALD "JERRY" DOYLE  
*Kansas City*

J. F. ELDER  
*Miami*

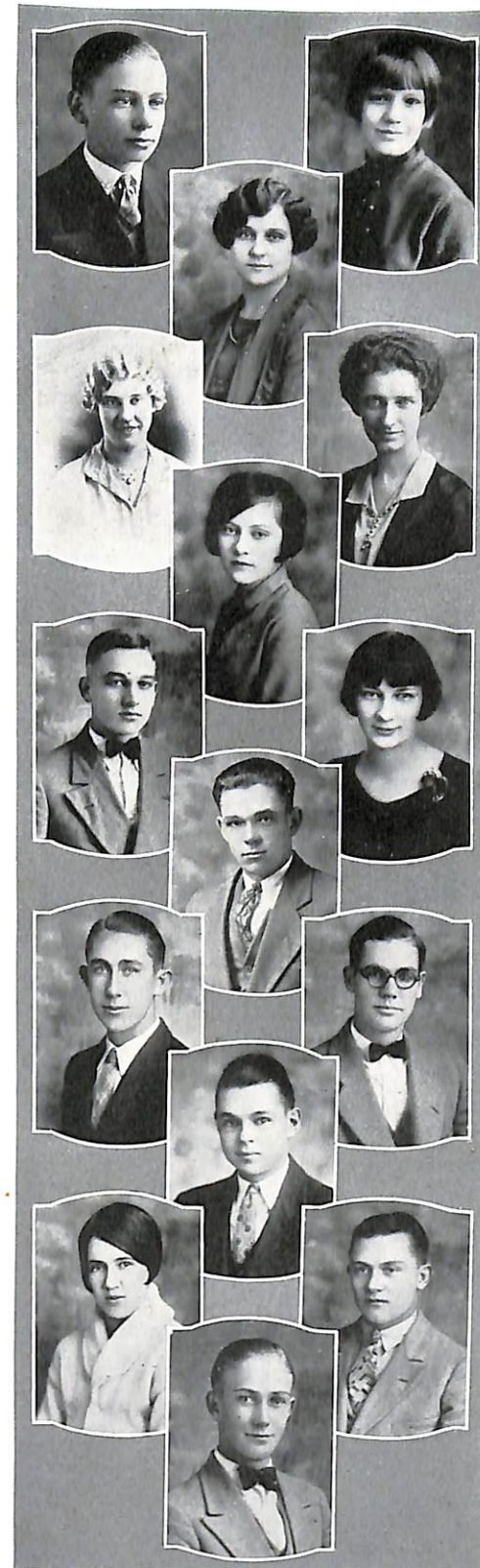
RALPH EVANS  
*LaPlata*

NOEL FERGUSON  
*Warsaw*

FRANCES FINKS  
*Calhoun*

SAMUEL FISHER  
*Yates*

LYMAN FREEMAN  
*Callao*





HELEN VIRGINIA GAULDIN  
*Slater*

FRANCES H. GOLLONG  
*Marshall*

BEN GROGGER  
*Hickman Mills*

JANICE HARRIMAN  
*Pilot Grove*

ADRIEN L. HESS  
*Concordia*

BERNICE HOFFMAN  
*Sweet Springs*

MARK D. HOLCOMB  
*Centerville*

NELLE HOWELL  
*Marshall*

EDWIN JONES  
*Blackburn*

BETTY JONES  
*Keokuk, Iowa*

WILLA JOSE  
*Marshall*

EMILY KRUGER  
*Marshall*

FLORENCE LA RUE  
*Marshall*

LUCILLE LA RUE  
*Marshall*

ELMER PAUL LEWIS  
*St Joseph*

WILLIAM LONG  
*Marshall*

HELEN MAHR  
*Salem, Ill.*

FRANCES A. MILES  
*LaPlata*

JOHN "JACK" MILLS  
*Warsaw*

BISHOP MITCHELL  
*Slater*

KENNETH MORROW  
*Marceline*

LONNIE MOTTESHEARD  
*Sweet Springs*

EDITH MYERS  
*Farmington*

WILLARD PAGE  
*Rochester, N. Y.*

MARY PALMER  
*Clifton Hill*

MARY ELIZABETH PERRY  
*Chillicothe*

PATRICK "PAT" PHELAN  
*Marshall*

RUTH PURCELL  
*Marshall*

HAZEL MARY PUTNAM  
*Marshall*

WILLIAM READING  
*Curryville*





EARL "CHARLIE" RIOTH  
*Brookfield*

KATHRYN E. ROBERTS  
*Marshall*

WALTER SCHMIDT  
*Alma*

JAMES W. SCOTT  
*Weston*

WAYNE SCOTT  
*Armstrong*

ROBERT SIMMONS  
*Pilot Grove*

GLADYS ZELMA SIMMONS  
*Malta Bend*

WILLIAM STERRETT  
*Slater*

WILLIAM STOLL  
*Marshall*

MARJORIE A. SWISHER  
*Marshall*

JESSAMINE TARVER  
*Gillette, Wyo.*

GEORGIE MAE TERRELL  
*Sweet Springs*

ELEANOR THOMPSON  
*Marshall*

LYLE M. THWEATT  
*Marshall*

WM. ALFRED WENZEL  
*Marshall*

WILLIE WENZEL  
*Marshall*

NOEL F. WILKINSON  
*Bates City*

ZELMA ZAHN  
*Marshall*

VIRGIL BLOSSOM  
*Brookfield*

GEORGE BROCK  
*Hickman Mills*

LAURA BUHLIG  
*Alma*

DEMUS DOUGHERTY  
*Higbee*

JOE WILLIS DOWNS  
*Marshall*

MILESS HAGGARD  
*Sweet Springs*

ROSINA HAMEL  
*La Plata*

MARIE HENNING  
*Alma*

CLARA E. HOFFMAN  
*Marshall*

LUELLA JETT  
*Miami*

DOUGLAS KELLING  
*Waverly*

GEORGE T. MASON  
*Mazie, Okla.*

MRS. LOLA MAYFIELD  
*Miami*

EDGAR MUNDAY  
*Aurora*

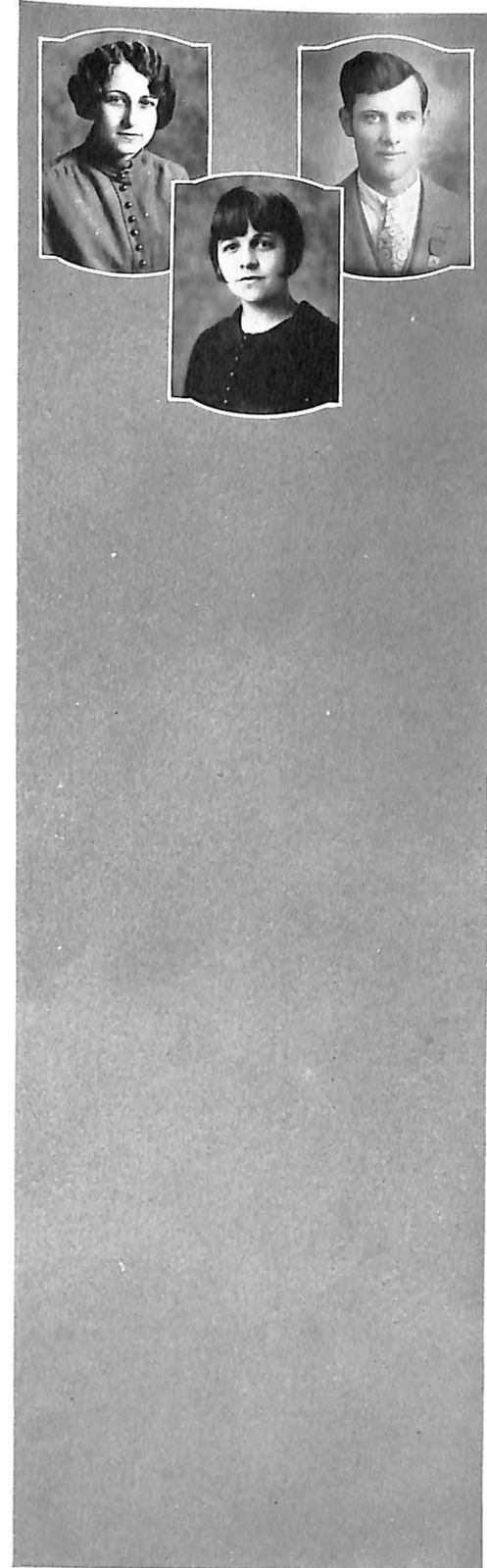
"PAT" PATTERSON  
*Odessa*

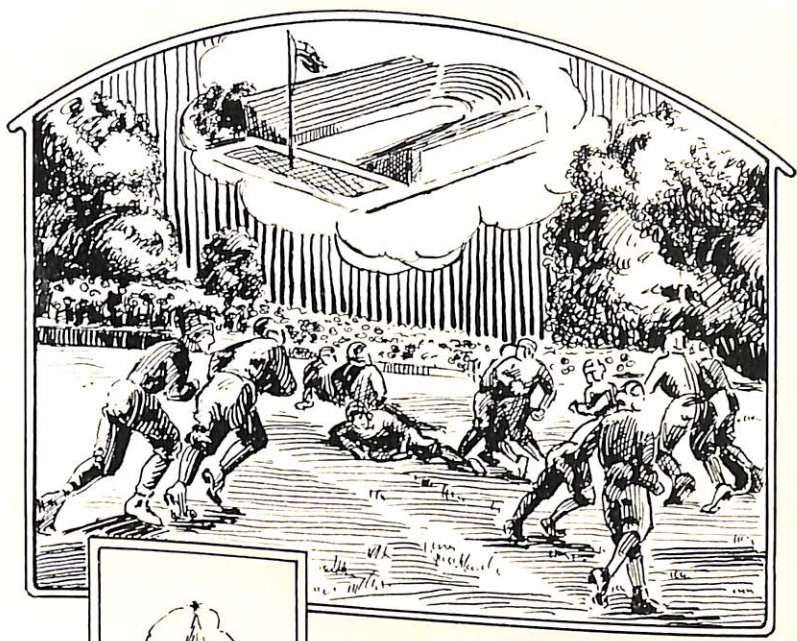
HUNTER PHILLIPS  
*Marshall*

MARGARET ROBINSON  
*Kansas City*

WILLIAM SMITH  
*Choteau, Okla.*

RAYMOND YANCEY  
*Mars'fall*





ATHLETICS





# ATHLETICS

The SABIDVRIA



HENRI RENILE GODFRIAUX  
*Director of Athletics*



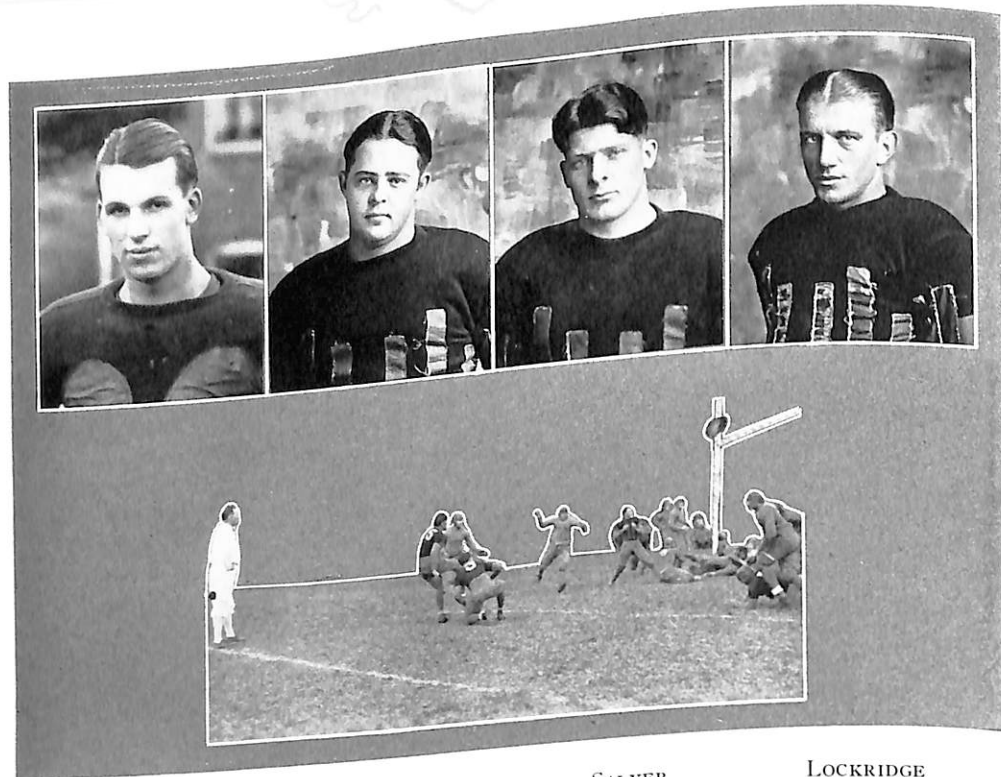
COACH GODFRIAUX      CAPTAIN MORGEY      CAPTAIN-ELECT MORGAN  
DR. G. T. NUCKLES

WITHOUT any attempt to eulogize the character of "Coach," it is right to say that he has always stood for cleanness and fairness in Valley athletics. He seems to overlook no opportunity to win if possible, but win or lose, to be gentlemanly and sportsmanlike about it. But aside from his athletic activities, his advice and assistance have been invaluable to many men and his character has served as a criterion to innumerable students.

Captain "Pete"—of whom it once was said "Be the going ever so hard, it is easy to follow you"—played his last game as a Viking. He was our captain, and our quarterback. But more by far than these, he had within him that which made him our leader—each squad member and each classmate respected every ounce of him. The inscription upon his little gold football tells the whole story—"Four Years' Service."

"Nellie"—Captain-elect of our 1927 football team—is an end who has achieved state-wide recognition. He was placed on both First All-State teams. There are some who doubt whether Nellie overcame his year's lay-off and played as well this year as he has in the past, but all will agree that he is the best defensive end in the conference. He knows football and should be an able leader.

The physicians of Marshall stand foremost among the friends of the Athletic Department, graciously offering their assistance at any time. Among these, Doctor Nuckles, because of equipment and experience peculiarly suited to the treatment of disabled athletes, has been especially kind to our teams on the field and in the office. The services of Doctor Nuckles will be appreciatively remembered by a great group of boys.



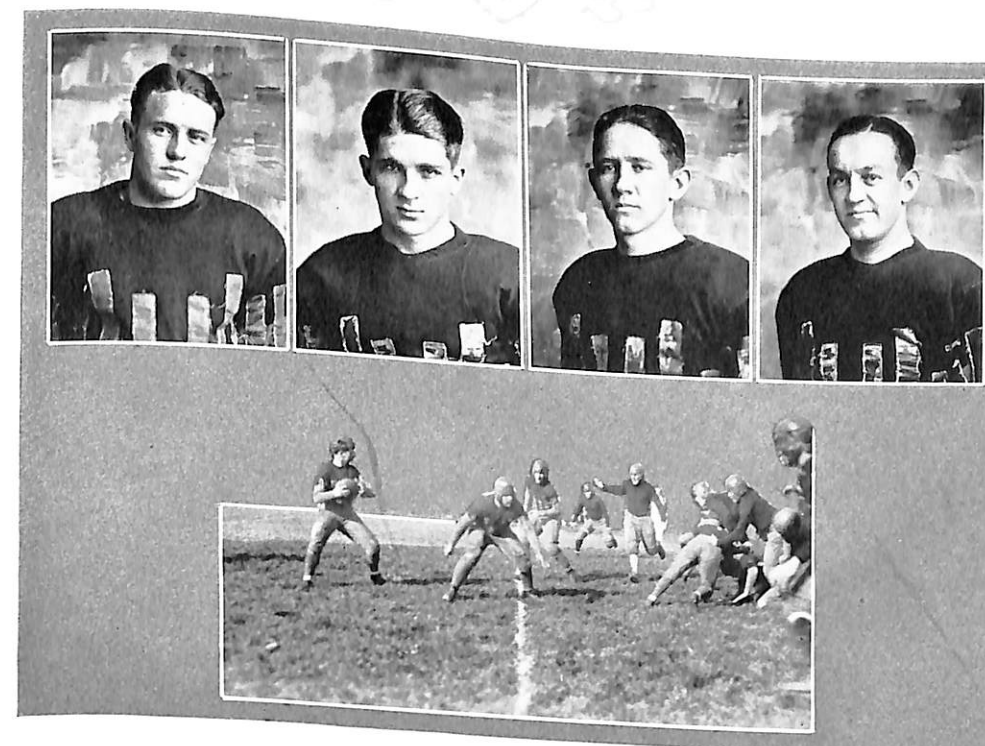
TWILLING      HAGGARD      SALYER      LOCKRIDGE

Fred was one of our "backs" who frequently broke through for long gains. He was always good for some yardage. But Fred's best football was his defensive playing. He met end runs and line-plays nicely and ranked with the best in defending his territory against passes.

"Mike" is a great big fullback who plays nice football, considering the little experience he has had and who promises great things in coming seasons. He and Salyer should make an unbeatable pair before they finish. Mike could always lumber through the line for a few yards—and often got away for long gains. His defense of the passing game was a constant threat and he is learning fast to back up the line.

"Red" is one of those versatile backs who can do about all that's done with a football. He is speedy but with enough weight to plunge the line successfully, as well as skirt the ends; can throw a bullet-like pass for fifty yards if need be, and on the defense backs up the line with a fierce, smashing play that keeps the enemy's plays well behind the line of scrimmage. He well deserved his place as fullback on both All-State teams.

"Doc" played his last year of football for Valley. He learned all he knows of the game from Coach Godfriaux. Playing alternately at end or backfield, Doc found his speed and a certain shiftiness, assets that earned him a place on the team the last two years. On the defense, Doc seemed to inherit the Lockridge difficulty for breaking up passes. He was best on the offensive; seemingly, he was the only back we had who could gain on Westminster. In his time, he has torn off several 30 or 40-yard runs.



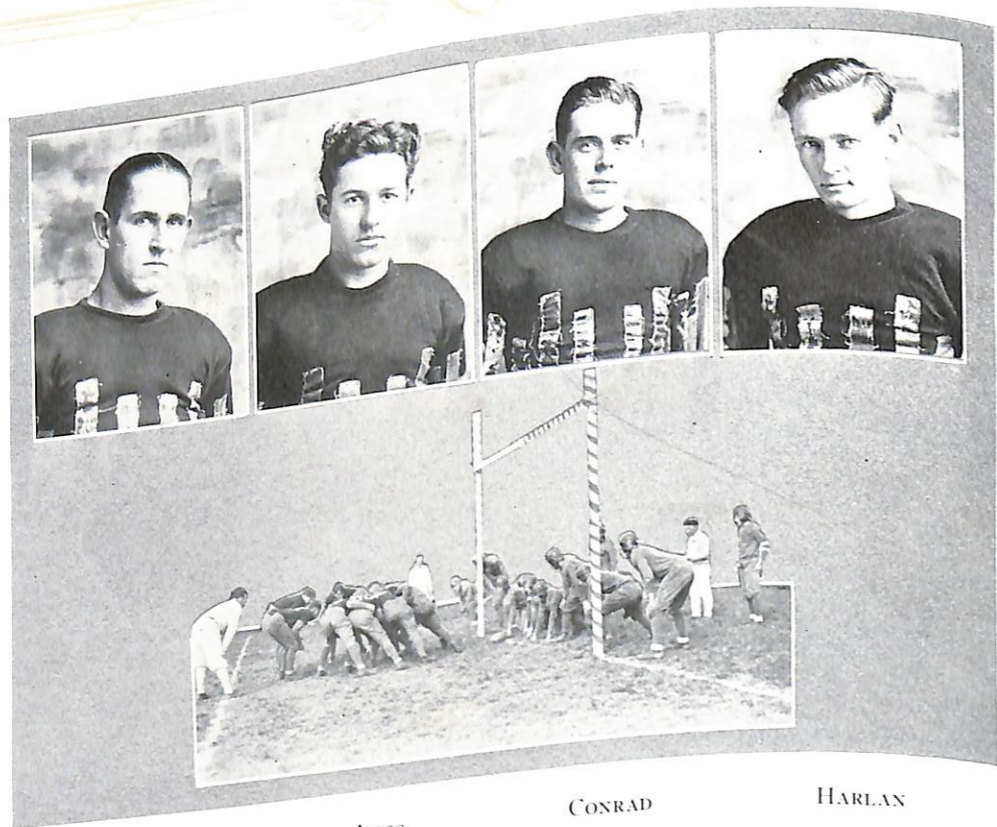
PATTERSON      TRIMBLE      PHELAN      PICKERING

"Pat" is a football player of more than ordinary merit. Pat's kicks were always somewhere between 35 and 85 yards, and his end runs between 10 and 40. He plays a game at end that is sweet to watch, going into groups of 3 or 4 or 5 and dropping the man with the ball on the line of scrimmage. He can stop an end run single-handed almost at will, it seems. And Pat has three years more to do it!

Trimble, tiniest backfield man in the conference, was an able member of our Board of Strategy. He was our reserve quarter—chose his plays well and, while unbelievable gains through Goliath-like opponents.

"Pat"—the other of Erin's sons who performed so creditably—was our regular center, a position he held mainly because of a fighting Irish heart. He was a tiny man with a great job—and he lived up nobly. Ever outweighed, never were hopelessly overwhelmed by opposing 200-pound guards and centers. He was consistently cool in passing the ball.

"Pick" was the third of our field-generals and showed up better this season than ever before. He was often held in reserve or would have played more. Pick plays a nice game as defensive half and can be called upon to punt if necessary. His two 45-yard boots out of "Dead Man's Corner" in the Westminster game were pretty.



HUTCHERSON

AMOS

CONRAD

HARLAN

"Hutch" was the mainstay of our first line of defense. Sometimes at center—more often at tackle, he played a noteworthy game, making a first-team berth on the Journal-Post's All-State Teams and a second-team place on the Star's selections. Hutch was never run over on the defense—and opened holes regularly on the offense, and it is conceded that he ranks, as an all-round linesman, with the best Valley has had—and Big Hutch has two more good years to play. He plays ever with an unquestionable sincerity.

Amos—beginning the season none too brilliantly—fought his way back into a position at left guard, where he played well enough to gain an honorable mention on the Journal-Post's All-State selections. His play was better at times than at others. He has three more years in which to round into one of Valley's reliable linesmen.

"Brough," playing but his second year of football, shows the possibilities of a fine linesman. He goes down on punts nicely but he plays his best game with the enemy carrying the ball. This has been said of Conrad—"He fights all the time!"

Louis furnishes us with an example of a type of courage all too seldom found. He came to Valley with no football experience; went through the trials of scrubdom undaunted; in his Junior year was able to break into but one or two conference games and only in his last year broke into the lineup often enough to earn the long-coveted "V." His satisfaction is one that a four-barred football player can never know. Louis was at a disadvantage against a heavy team but his effort was always most sincere and we honor him for it. We are proud to have known him.



BLOSSOM

BROCK

MOTTESHEARD

RIETH

"Bloom" sustained a foot injury early in the year that hurt his play throughout the season. He is a big man who, with experience, ought to add some much needed weight to our line. He was probably held out of the play somewhat as a reserve center.

Brock has given evidence of exceptional ability. He came in as a green man and grasped the rudiments of the game in a way that indicates that some linesman will have to work rather hard to keep him out of next year's lineup.

Lonnie is a new man who is trying faithfully to become one of Valley's wing men. He was a first-string substitute this year and got into several games. He needs experience and this year's work should help him a great deal.

"Charlie," our rangy Swisher-like tackle, gave a good account of himself in the games he was in but unfortunately was laid up for a large part of the season with a knee injury from the Central game. He will make us a splendid linesman next year.



Top row: ASSISTANT COACH NOLTE, PATTERSON, HAGGARD, WILKINSON, BROCK, RIOTH, HUTCHERSON, BLOSSOM, AMOS, HARLAN, MILLS, COACH GODFRIAUX  
 Center row: HESS, CONRAD, MORGAN, TWILLING, CAPTAIN MORGEY, TRIMBLE, LOCKRIDGE, SALYER, MOTTESHEARD, DOUGHERTY  
 Bottom row: PICKERING, HOLCOMB, BEALL, SCHAEFFER, ROBB, PHELAN, BRASHER, WENZEL, STAGE

## THE SEASON IN FOOTBALL

TO THOSE teams that loom up through the years as having made lasting contributions to Valley's football history must be added another, the valiant Viking band of '26. Coach Godfriaux had produced, from a squad that was probably the smallest in the conference and of whom three-fifths were first-year men, a team that ever met the representatives of our sister schools on an equal basis and who by homeric efforts established themselves in the enviable position of second place in the final standings. The splendid morale of the team as a whole for the year's play can be attributed to him and in a large measure to Captain Pete Morgey.

Our season-opening game with the Wentworth Cadets, which we won by the only touchdown made, was a rather colorless affair. The afternoon was too sultry for football and neither team played consistently. Haggard did some nice plunging through a line that was heavier than our own.

Our next game, with the Central Eagles at Fayette, was far from reassuring. Lockridge scooped up a fumble on the first play of the game and outran the Central outfit for a touchdown. This unexpected turn of events seemed to demoralize our entire team. We never threatened and Central was able to score three touchdowns to win handily. Gray of Central made some pretty end runs.

On the next Friday we sent a changed team against the "Champions," Missouri-Wesleyan. There was never any doubt as to the outcome of the game.

## THE SEASON—Continued

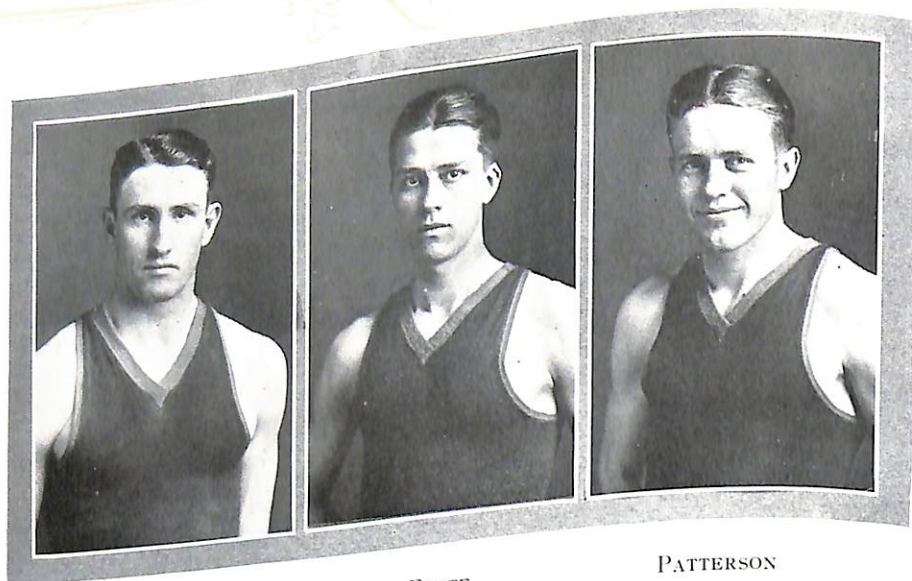
The Cameron lads were unable to carry the ball past our thirty-eight yard line. Patterson's punting and long end runs were features, but the spectacle most appreciated was Haggard's interception of a Wesleyan pass and a subsequent sixty-yard run with perfect interference for a touchdown. Bourette ran back the Valley punts nicely.

Our fourth encounter was with Central-Wesleyan. Warrenton had a notoriously weak team, but our play was so ragged in spots that many of our gains went for naught. It was not until the second half that our substitutes could get into action. Amos broke through and blocked one of Wesleyan's punts. The Cewesco rooters were the most loyal group our team has played before.

William Jewell may always be ready for a battle when the Vikings oppose them. This was but proved again on that ideal autumn afternoon last November when a determined purple and gold clad football team, backed by a rabid following, two hundred strong, invaded the Liberty campus resolved to come home "with their shields or on them." That glorious defeat of the preceding year, which was in so many ways a victory, was still fresh in the minds of all who had witnessed it. And especially must it have burned in the heart of one brick-topped Viking fullback who is a demon in the field against the Cardinals. He led the offense—he led the defense. His forty-yard run through the very center of the Jewell team without interference was sensational—his smashes crumbled the Red forward wall time and again—and the fact that the Jewell team made but twenty-eight yards through our one-sixty-five pound line is eloquent testimony that he backed up our line in grand style. But he was not alone. Haggard was gaining nicely through the line and even snared a Jewell pass which he ran sixty yards for one of our three touchdowns. Patterson, too, was having a great day. He and Morgan were breaking up end-runs in the starting and Pat once stood on his own goal line and booted the pigskin eighty-five yards, beside making one thirty-eight and one twenty-five-yard run around end. It would have taken a much superior Jewell team than was in the field to stop the Vikings that day!

Next week we met the powerful Westminster eleven on our own gridiron. Sexton, White and Farrington were just too much for us. We were playing for the championship, but were not of championship calibre that afternoon and tasted defeat for the second time in the season. We never really got started. Lockridge made a few gains and Salyers completed one nice pass to Captain Morgey. That was the extent of our offense—our defense was faulty and Pixlee's squad bested us.

The season, as a whole, was most gratifying. Morgan, Hutcherson and Salyers were named for places on the All-State teams. Missouri Valley is fortunate in losing but three regulars through graduation. Coach Godfriaux should have back, almost intact, this year's team around which to build his team for '27.



MILLS

FETTE

PATTERSON

Mills was the spark plug of the team's offense. He had a happy faculty for taking the heart out of the opposition by his colorful rushes and startling leaps. His was the alert brainy type of game which kept us always a step ahead of our opponents. He even fooled the Sporting Editor of the K. C. Post into putting him at both forward and center on the third All-State Team—and was also placed on the third team by the Star. In spite of being handicapped early in the season by a sprained ankle, he was second high-point man on the Viking team.

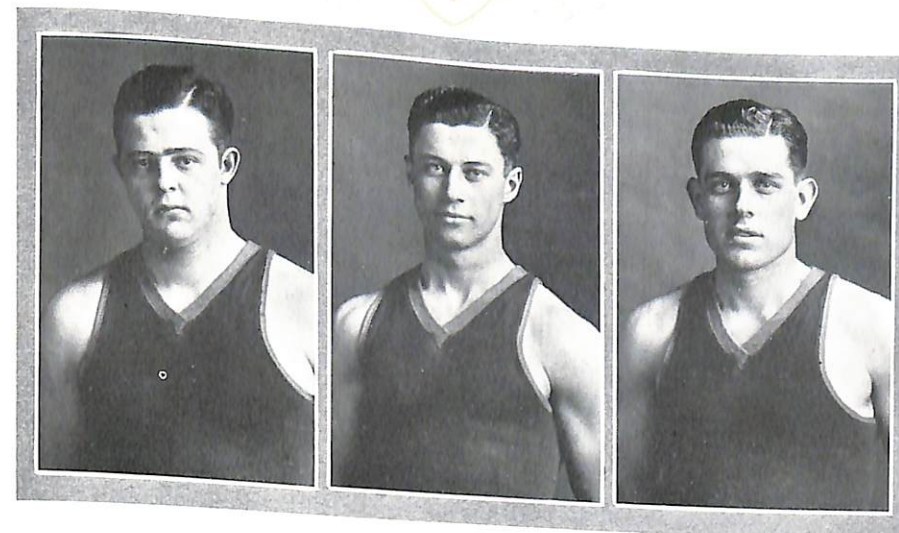
Louis Fette, a former star of the Alma High School team, had a very successful season as center on the Viking quintette. In selecting him as center on the All-State Team, the Kansas City Star said "Fette, of Missouri Valley, although only a freshman in college, withstood the season in the style of a veteran. The sandy-thatched pivot man of the young Vikings plays a good floor game, is a sure shot from the field, cool under fire, and received the praise of four of the coaches in their selections." He led the Viking team in scoring with a grand total of two hundred and thirty points and is Captain-elect for 1927-'28.

At the beginning of the season Pat said he really didn't like to play basket ball. After watching his game all season we would heartily enjoy seeing him play if he did like it.

This can be said of Pat—his play improved with every game. He was speedy in taking the ball down on the offense and, with Mike, formed a combination that speeded up the team's offensive a great deal.

Pat had a fondness for sinking one-handed shots from peculiar angles. He was at his best in the Central game when his goal shooting and floor play stood out prominently.

He was third high-point man of the Vikings with a total of eighty-six points and was accorded honorable mention for the K. C. Star's All-State Team.



HAGGARD

DOUGHERTY

CONRAD

Big Mike, like Pat, grew better with each game. They formed a happy combination, Mike grabbing the ball off the backboard and tossing it out to Pat before the opposition knew what it was all about. And how Mike could go up and "get 'em," and once he had his hands on the ball he never let go of it till he started it on its way properly.

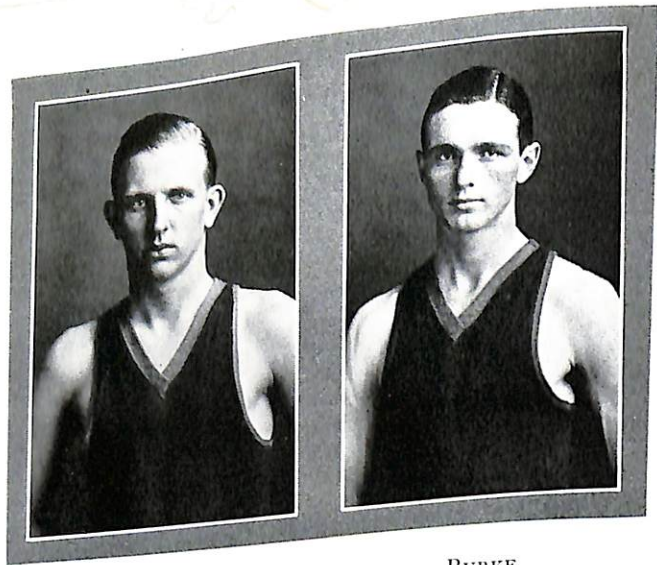
That he led our guards in scoring is proof enough of his shooting ability, and that he was placed on the third All-State team by the Star and given Honorable Mention by the Post is evidence that his ability was recognized.

Demus was one of the real youthful veterans of the team, starting every game except the first one. Quick as a cat, he played a clean, aggressive game, backed by a never-say-die spirit and a fighting Irish heart.

He usually took the ball up to the line of defense and generally got it started through successfully, sinking some pretty shots himself when they were most needed.

He was given Honorable Mention by both the Post and the Star.

Captain Conrad, one of the veterans from last year's team, directed the play of the team well from his standing guard position. He put up a strong game, being particularly adept at covering his man. He made things miserable for Leandree and McAdam, his former team-mates, when they played the Vikings.



FRERKING

BURKE

In Frerking we had a valuable substitute always ready. He had a good eye for the basket and generally scored when he was put into the game. Evidence of this was the Missouri Wesleyan game at Cameron, when he scored eleven points in the last half alone.

"Speck" worked hard and was always willing to sacrifice himself to the play of the team. He held down a regular berth at forward most of the season and had a couple of big nights—playing particularly well against Central on their court when he ran up a total of fourteen points.

## THE SEASON IN BASKET BALL

NO GAME affords more real thrills for the spectator than basket ball, properly played. An intercepted pass—or a long run for a touchdown; a sparkling catch or a home run that wins a game, these are exciting moments that may dot a football or a baseball season. But one real basket ball game may incorporate more palpitations of the heart than a whole season of the other sports.

We have just passed through such a basket ball season. Our Viking team consistently played smart, speedy basket ball—a joy to the students, townfolk, and Coach alike.

Clyde McBride in his column of sporting comment in the K. C. Star said: "Henri Godfriaux and his squad of young basketeers from M. V. C. are putting basket ball on the map at Marshall." And put it on the map they did, winning eight of the nine games played at home. The attendance grew with each game, until at the Westminster battle, late in the season, over a thousand people packed their way into Morrison Gymnasium to watch the affair.

The fact that we lost that game to a superior team, a team older in the ways of the game, a team then at its height—reflects no discredit upon our boys, for they enjoyed a successful season, winning eleven of the sixteen games played.

The most striking game of the season was on January twenty-fourth when Jewell came to Marshall and we beat them 31 to 30 in a tense thrilling game, not decided until the final gun barked. That game not only toppled the Big Red Team from the leadership, but it gave our boys the confidence to carry on through a successful season.

We had a happy faculty for stopping victorious spurts of other teams in the conference for, after successfully overcoming Jewell, we brought Culver-Stockton and Central Wesleyan down from the top rung before being beaten ourselves by a more experienced team.

That Westminster game was another thriller. They amassed a lead of eighteen to nine in the first half—but our boys fought them off their feet to tie it up at twenty-six all, with about six minutes to go in the last stanza. However, we were ultimately forced to accept defeat 33 to 28, but only after outscoring the supposedly invincible Champions 19 to 15 in the second half.

The Vikings this year have often been referred to as a Freshman outfit, and such they were, especially at the end of the season, when Coach used his all-freshman quintet to start most of the games. This augurs well for the future. If a team composed of men playing their first year of college basket ball can finish in fourth place, what heights will not be conquerable after they have played together a year or so.

The season as a whole was eminently successful, including, as it did, two victories over Jewell; our first over Central; and victories over every other team engaged with the exception of Westminster.

So in looking back over the Viking basket ball season of 1926-27, let us remember it as symbolizing our entrance into a regime of victory in the court game. Long may it live in our hearts!

## THE SEASON IN BASEBALL

WHEN the trees begin to bud, and the tender, green shoots of new grass begin to push their noses up through the sod; in the spring when the Calendar of Sports announces Baseball—Missouri Valley is generally able to put a team on the field that can uphold the glory of the Viking name against any foe.

However, our baseball season of 1926 was not crowned with many victories. The team was one of the weakest to represent Valley on the diamond in a good many years. The squad was not very large, but even this would not have proved unsurmountable if it had not been for the dearth of pitching material.

The season was marked by some good baseball, all of the games being hard fought and quite a number of them going into extra innings.

In some games we were handicapped by weak hitting. This invariably placed the burden of responsibility on the pitcher, and our "one-man staff" responded valiantly. Red Salyer, who hadn't played baseball regularly since he was in grade school, was our only available twirler. By dint of good control, he was generally able to keep the opponents pretty well in check as long as he was given good support. However, when the infield began to crack, there wasn't much chance of saving the ball game.

We played Westminster a two-game series at Fulton on May 6 and 7, and the first game was a beauty, going eleven innings and finally ending with the Blue-Jays on the long end of a 6 to 5 score. The following day, however, our "pitching staff" showed the strain and we were beaten handily.

In the last game of the season, against Central, they got a two-run advantage in the first inning by virtue of a home-run with a man on base, but we tied the score in the second inning, and then went into the lead in the fourth when Salyer hit a triple. We maintained this advantage up until the seventh inning when four errors, backed by a hit, gave them four runs and the game.

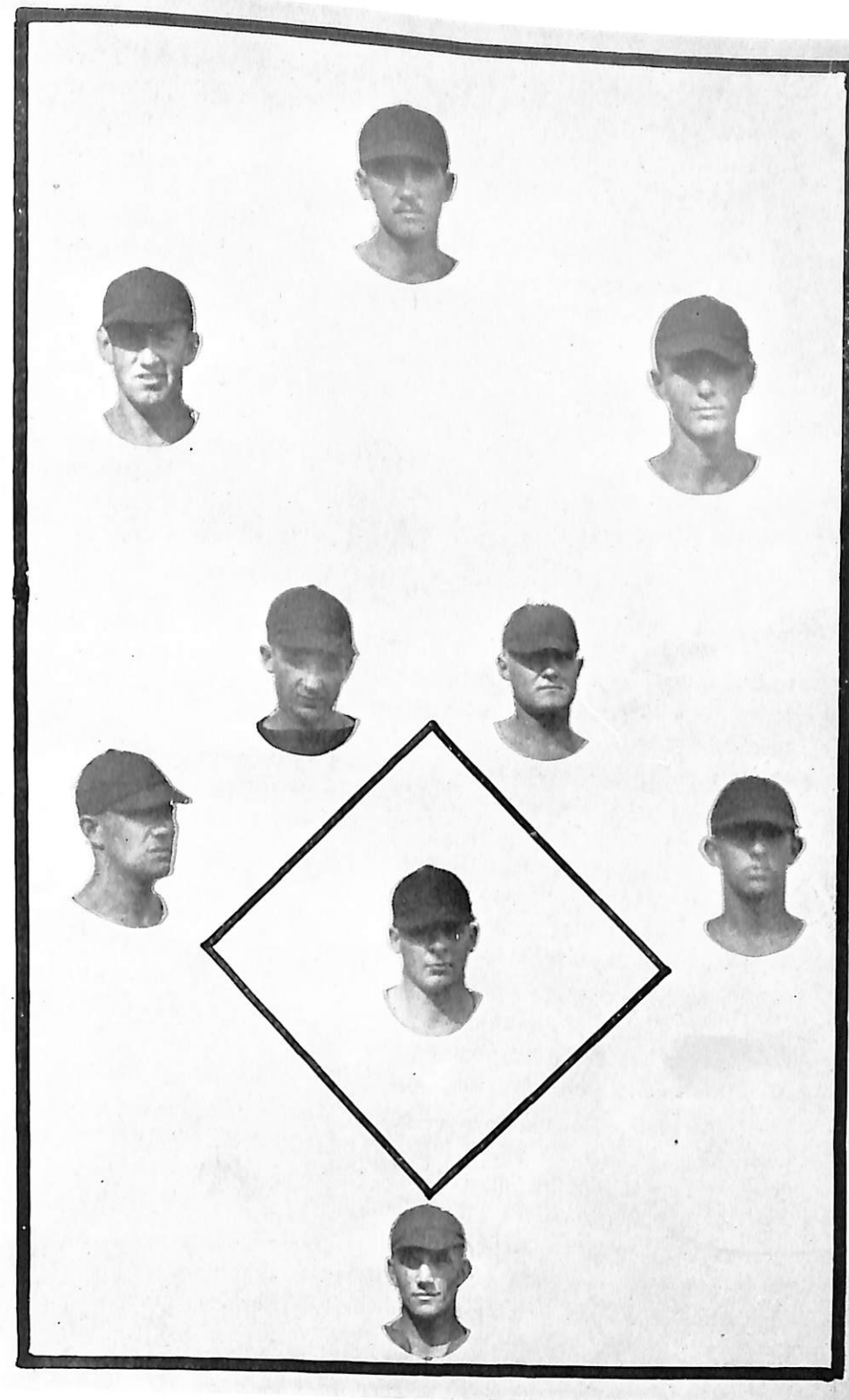
And so it went.

However, we look forward to baseball this spring with renewed hope and expect to get revenge for some of last year's defeats.

With Fette to strengthen the pitching staff, and Patterson to plug up the gap at shortstop the team should be much stronger defensively. The big bats of Haggard, Patterson and Fette should give the offensive the necessary stimulus to send the team off to a successful season.

The men who carried the brunt of the attack last year were Storck, Trimble, Salyer and Burke, with only Storck and Trimble batting over the charmed three-hundred mark.

However, we hope to have quite a collection of three-hundred hitters this year and to celebrate a very successful season.



## WOMEN'S ATHLETICS

**M**ARK time, March! Left, right, left, right, to the rear, March! Left, right, left, right, with a right flank, March! Left, right, left oblique, March!

Thus the girls' athletic year began. But very soon, in fact after the first football game, the regular classes devolved into Skull Practice on football rules. After quite a time, penalties, points governing the forward pass, touch-backs, safeties, and many of the other fine points became part of the general knowledge, and we viewed the succeeding football games with an increased zest. We were always watching to see whether Pat would punt, or fake and make an end run; or whether Mike would make a line drive; or Red would get away for a long gain.

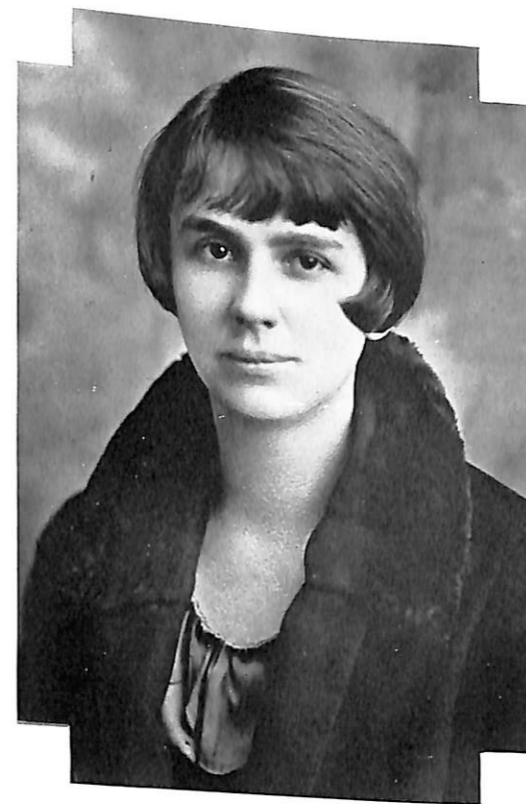
As football season wore on and basket ball time appeared, there were workouts, passes, shots and team work to be perfected. After the class teams had been nicely shaped up, the girls had a "Tournament of Colors." The Orange, Old Rose and Purple played an elimination contest during three afternoons. The last game declared the Purple victors. An all-star girls' team was selected from these groups, and was as follows: Guards, Mary Doane and Willie Wenzel; centers, Hazel Putnam and Elizabeth Gillette; forwards, Mary Thomas and Willa Jose; most versatile player, Marion Brightwell.

From basket ball the season drifted into Aesthetic Dancing. We began from the very foundation, by first working out the five standard positions and the rhythmic exercises based upon them. After this, the very simple folk dances prepared the way for the complicated Major Folk Dances which followed. The outstanding feature of the dancing season was the fact that each girl worked until she could do every step.

Perhaps, we might revert here to a word about the more mechanical phases of the athletic program, which dealt with corrective exercises and playground games, such as: Captain ball, black and white, circle leap frog and dodge ball.

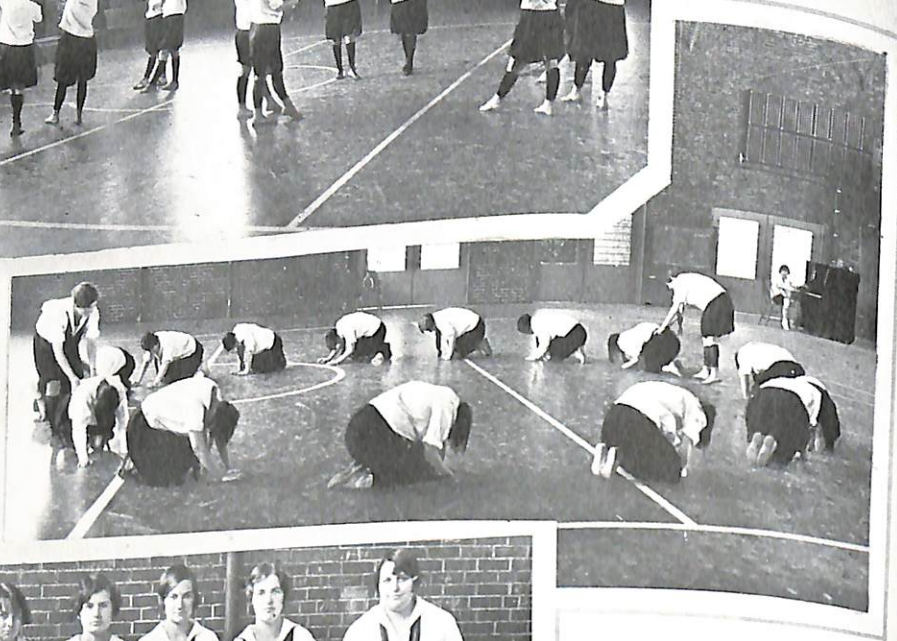
After the dancing season, a week of volley ball came in, and this was followed by indoor baseball, indoors and outdoors. The baseball developed some nice hitting and good pitching and was a fitting sport with which to climax the athletic year.

The May Day dances in the late afternoons and evenings during the greater part of the spring quarter brought about remarkable transformations, making lovely roses, butterflies, sunbeams, rainbows, fireflies, daffodils and May Pole revelers of every Missouri Valley College maiden.

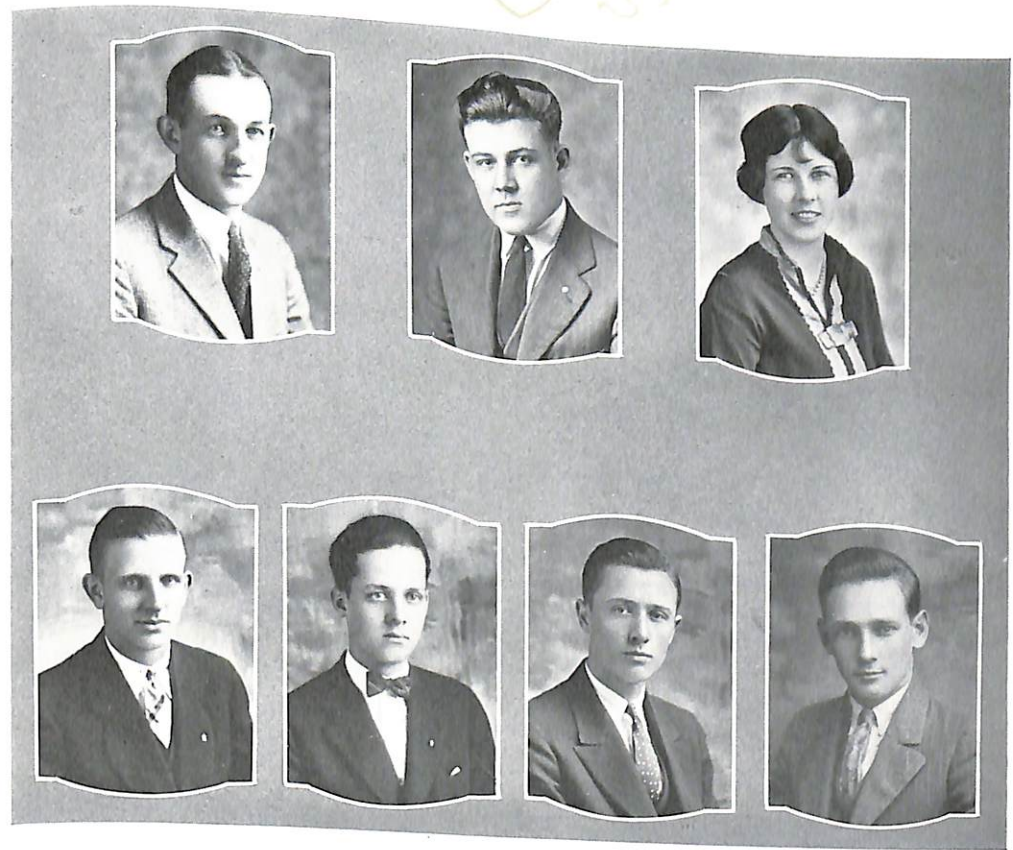


MRS. MARIE MONTAG, A. B.  
*Director of Women's Athletics at Missouri  
Valley College*

**A** GREAT deal of the credit for the splendid health of the Missouri Valley girls may be attributed to the work of Mrs. Montag with them in the gymnasium. Aside from the pleasure received from the courses, they have gained a supply of vitality which has aided them in living through strenuous college days.



ACTIVITIES



## THE UNIT COUNCIL

ROY C. LINBERG  
*President*

JOHN PHIPPS  
*Vice-President*

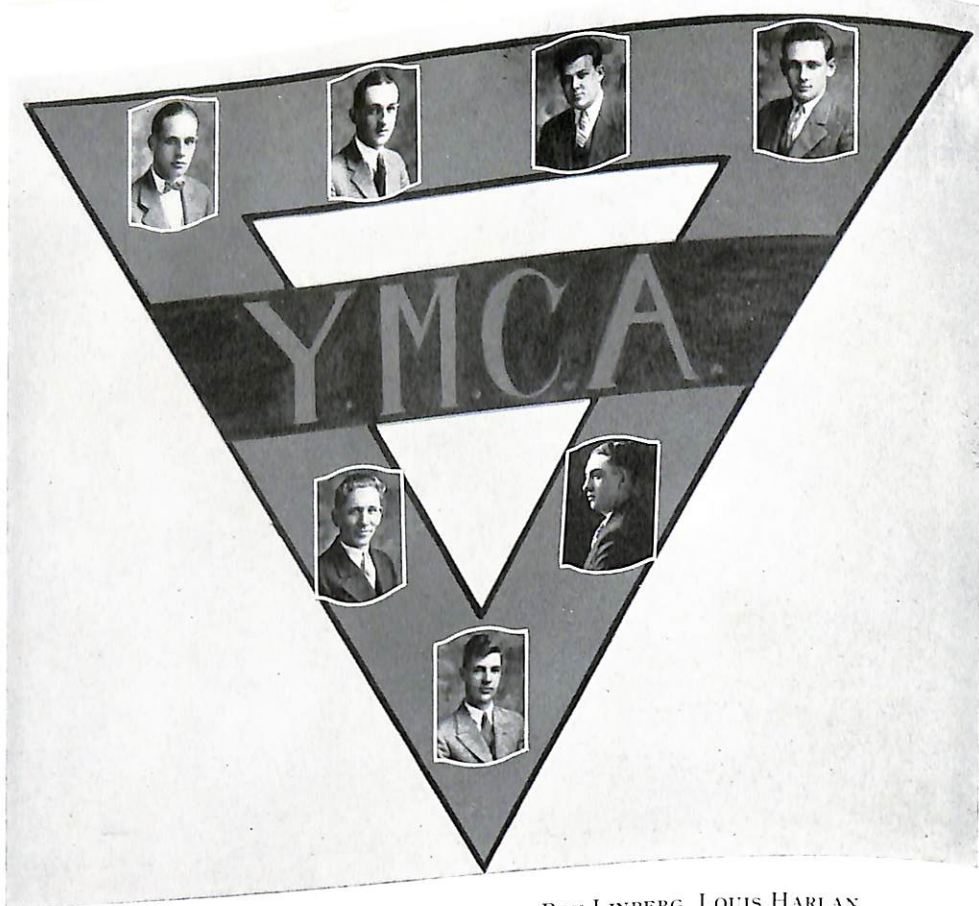
DOROTHY DOANE  
*Secretary-Treasurer*

JOE PRICE FRERKING  
*Sophomore President*

LOUIS A. HARLAN  
*Senior President*

WILLARD PAGE  
*Freshman President*

HURSTON PHILLIPS  
*Junior President*

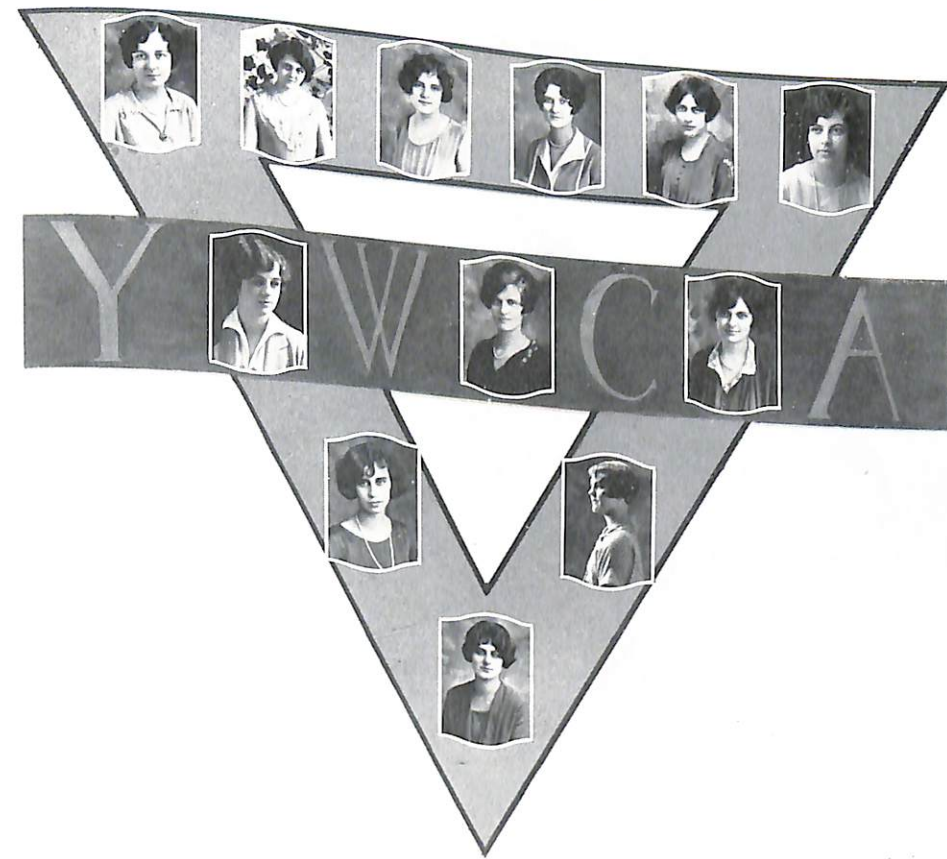


Top row: RALPH THOMAS, JOHN PHIPPS, ROY LINBERG, LOUIS HARLAN  
 Center row: K. D. WILLOUGHBY, WILBUR HARMON  
 Bottom row: CAMPBELL HIXSON

### Y. M. C. A.

THE Young Men's Christian Association of Missouri Valley College is a voluntary organization which endeavors to give the student a spiritual and social life that is sponsored and directed by the students themselves.

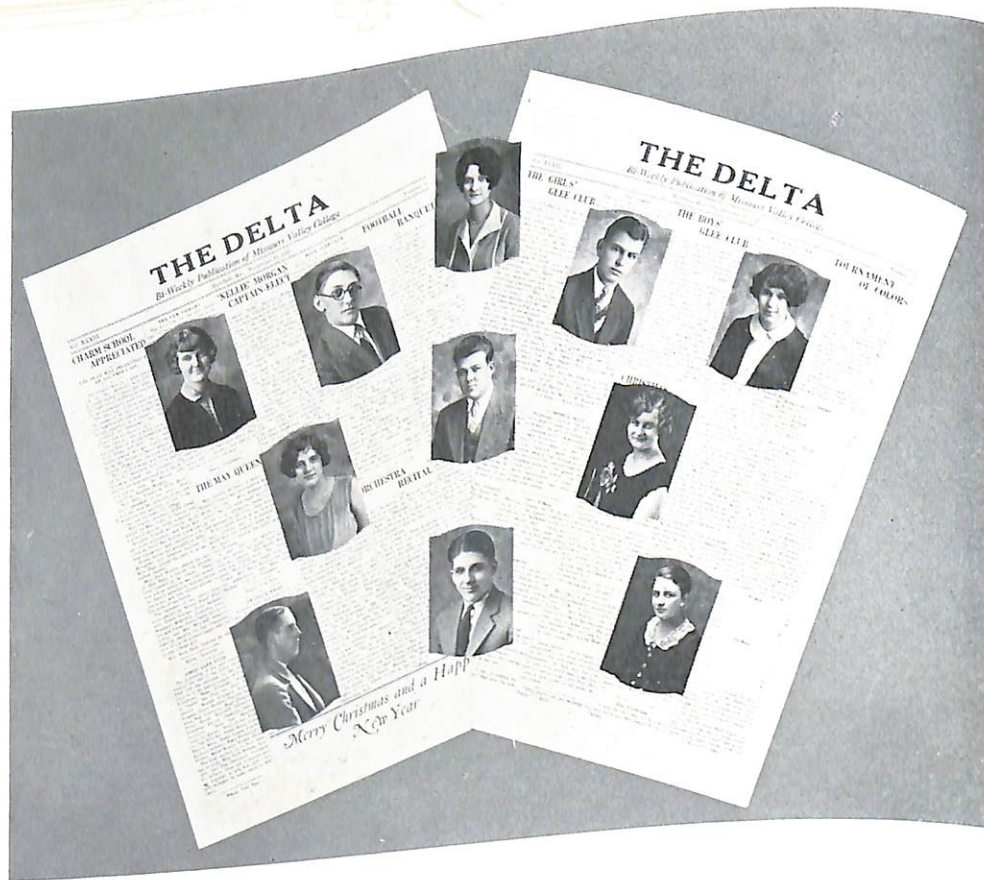
The Y. M. C. A. has as its goals the deepening of the moral, ethical, and philosophical views of life in order that the educational training may be well balanced; the developing of leadership in Christian work; the marking out of a livable type of Christian fellowship that can be conveyed to others with whom they come in contact in later life; the developing of greater moral, physical, and spiritual capacities; the measuring of life by the standards of the Red Triangle, the symbol of the Y. M. C. A.



Top row: NORMA PUTNAM, KATHRYN JOHNSON, LAURA HENLEY, HAZEL LOUISE POUCHER,  
 ALLA MARIE REYNOLDS, ALICE GILLUM  
 Center row: RUTH WALKER, MABEL KNAPP, President, RUBY ASBURY  
 Third row: MAUDE PATTERSON, RUTH HUYETT, ELIZABETH GUTHREY

### Y. W. C. A.

CHRISTIAN development in the mental, social, physical, and spiritual phases of a girl's life is the goal of the Young Women's Christian Association. The things accomplished this year have been to this end: A luncheon in the Spring, four girls sent to the Training Council in Mexico, Mo., six girls to Monte Ne, Ark., in June to Summer Conference; the Little Sister Movement; Y. W. hike, Joint Social with the boys in the fall, a chili supper before the Kemper basket ball game; a meeting every Wednesday morning in our Y hall; devotional week with Dr. Gardner; and the Mothers' and Daughters' banquet when the new cabinet was installed. More than all of these, the friendships and fellowship that were enjoyed brought to each an ideal and preparation to take her place in the world.



### THE DELTA

HAZEL LOUISE POUCHER	Editor-in-Chief
CONTE CLAY FLEMING	Associate Editor
LOUISE MILLER	News Editor
LAURA HENLEY	News Editor
ELMER LEWIS	News Editor
EDWIN WITTRUP	Business Manager
SHELBY WILSON	Advertising Manager
NADINE LEONARD	Literary Editor
MARGARET STEVENSON	Athletic Editor
ROY LINBERG	Humorous Editor
FRANCIS TRIMBLE	Faculty Advisor
MRS. IVAH BARRETT	

THE DELTA, the student paper of Missouri Valley College, is published bi-weekly by the Delta Staff. It is financed by student subscriptions and by the sale of advertising space to the merchants of Marshall.

It has been the purpose of the staff to edit an increasingly better paper; to keep the Missouri Valley College publication on a par with other College papers in its interest and journalistic values. The Staff has endeavored to record all events concerning the College, its faculty and its students. It has aimed to give justly proportionate space to curricular activities, athletics, humor, and editorial interests of the school. The editors have hoped that the editorial page might be considered the treasure-box of thought.



### THE SABIDURIA, 1926-27

RUTH WALKER	Editor-in-Chief
HURSTON PHILLIPS	Associate Editor
LOUIS A. HARLAN	Business Manager
BERTHA MAE SHOOK	Advertising Manager
WM. O. PICKERING	Athletic Editor
GILEEL COFFMAN	Artist
MARQUIS MORGEY	Photographer
WILLIAM STERRETT	Humorous Editor

THE Staff of the 1927 Sabiduria has endeavored to give you, the faculty member, the student and the casual reader, a real interest and place in this book. If the contents will voluntarily recall memories of your college days that have so suddenly passed from you and aid in establishing stronger ties of fellowship for each other and deeper bonds of love for M. V. C., we can truly say our efforts have been successful.

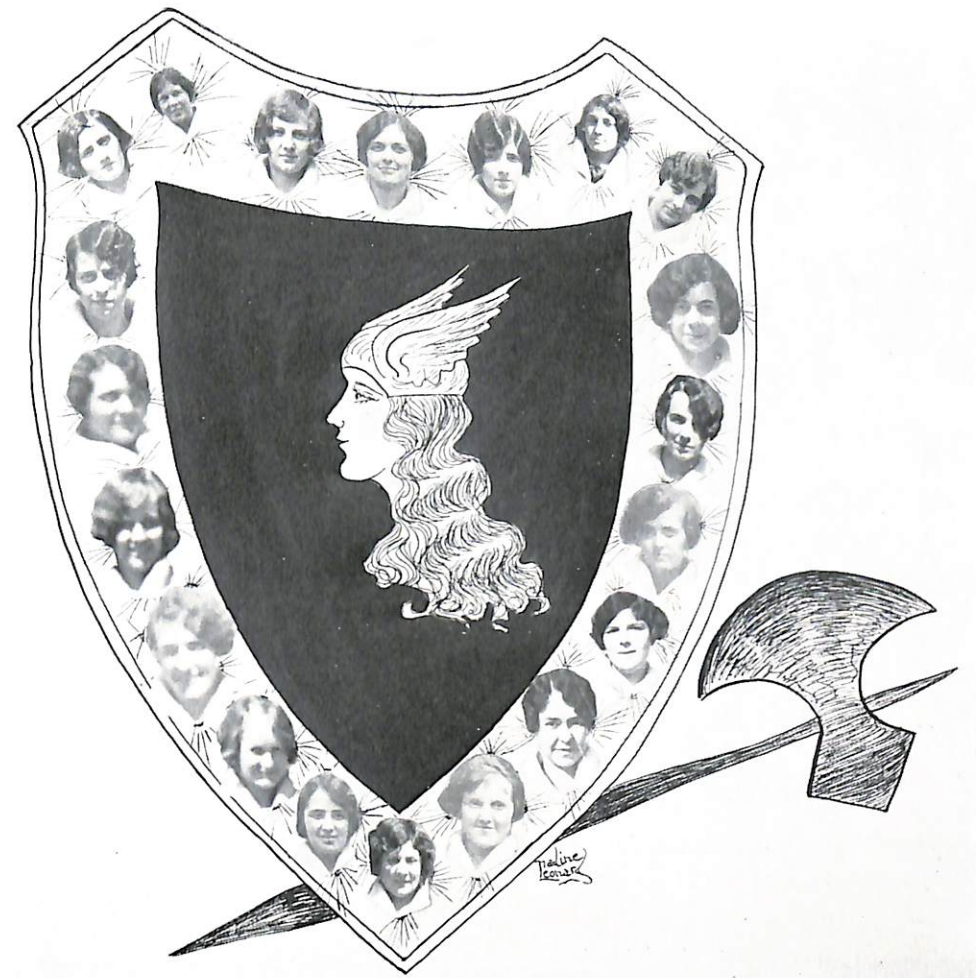
We hope that you will criticize this book and give vent to your feelings by making the 1928 Sabiduria a bigger and better annual.

The Staff wishes to express its appreciation to all those individuals and organizations that have so willingly co-operated in making this Sabiduria a success.



THE LITERARY SOCIETY

SHELBY WILSON	President
ALICE GILLUM	Vice-President
MABEL KNAPP	Secretary



THE VALKYRS



Top row: JOHN PHIPPS, H. H. HARRIS, JR., ROY PALMER, SHELBY WILSON, WILBURN HARMON  
 Center row: ROLLAND SNUFFER, CHARLES BACON, ROY LINBERG, SAMUEL FISHER, MARK  
 HOLCOMB, EDWIN JONES  
 Bottom row: HOWARD ECKES, J. W. SCOTT, CAMPBELL HIXSON, JOHN DANFORD, NOEL FERGUSON

## THE MEN'S GLEE CLUB

CLAUDE L. FICHTHORN	Director
CAMPBELL HIXSON	Assistant Director and Accompanist
CHARLES BACON	Business Manager

THE Men's Glee Club this year was recruited largely from new students, for exactly nine of the fifteen members were warbling their first glee club ditties.

The ensemble harmonies were not always perfect, but their deficiencies were overcome by spirited renditions of "Hail Us," "Close Harmony," "Gypsy Trail," and especially "Jerusalem Morning."

Wilson, Club soloist, always found his "Rio" and "Three for Jack" well received. Jones and his Uke and his popular melodies ever drew a big hand from the juvenile element as did Snuffer's "Love Song," and Linberg's "Il Trovatore." Novelties like the bassoon solo and the "Ham Medley" were entertaining. The director and accompanist, being one and the same—Campbell Hixson, was quite efficient. Campbell has had entire charge of the Club and if it has been in any measure a success, the credit must be his.

A most ambitious trip was undertaken, St. Louis, Webster Groves, Louisiana, LaPlata, Atlanta, Marceline, Brookfield, Bunceton, Salisbury, Glasgow, and other places being the hosts, in all of which towns the audiences were kind enough to enthusiastically declare that for entertainment value the programs were splendid.



Top row: MISSES MARY THOMAS, MARGARET STEVENSON, PATRICIA LARKIN, PROF. C. L. FICHTHORN, MISSES CORINE BACON, NORMA PUTNAM, JESSAMINE TARVER  
 Center row: MISSES KATHRYN JOHNSON, MAUDE WHITWELL, RUTH WALKER, HELEN GAULDIN, ROSINA HAMEL, HELEN MAHR, MABEL KNAPP  
 Bottom row: MISSES BETTY JONES, HAZEL LOUISE POUCHER, DORA LEE MORRISON, FRANCES LOU FLETCHER, SALLY JO HARPER, MERIAM RENISON

## THE GIRLS' GLEE CLUB

CLAUDE L. FICHTHORN	Director
MAUDE WHITWELL	Assistant Director
RUTH WALKER	Business Manager
JESSAMINE TARVER	Accompanist

THE Girls' Glee Club of Missouri Valley College is one of the most active organizations of the school. During the fall quarter it was composed of all the girls interested in glee work and was known as the Choral Club. At the beginning of the winter quarter the members of the Glee Club were chosen and intensive work was begun. Miss Anna von Tobel consented to be the chaperon and her presence was very much appreciated by the girls.

A program was planned, including choral numbers, quartettes, violin selections by Miss Mary Elizabeth Perry, "Cow Boy" selections by Miss Wyoming—Miss Jessamine Tarver, solos by Miss Maude Whitwell and Miss Kathryn Johnson and readings by Miss Hazel Louise Poucher. Two plays were also featured, "No Men Wanted" and "Thursday Evening."

The program was presented in four churches in Kansas City, at Higginsville, Windsor, Alma, Sedalia, three concerts in Marshall, and other local trips.

The year was an exceedingly enjoyable one as well as of great profit to those who took part.



## THE ORCHESTRA

THIS year the Missouri Valley College Orchestra, under the able direction of Prof. A. T. Vawter, has been a very valuable organization to the school. The splendid quality of tone and uniform phrasing of the string section gives evidence of the excellent work alone in the violin department. Lessons are given on each of the instruments used in the orchestra, in addition to a course in theory of Orchestra. The Seniors taking this course do part of the conducting as a part of their required work. The Orchestra members have a fine opportunity for practical work aside from theoretical study. They learn rhythm, and the blending of tones under a skilled director. The Orchestra makes numerous appearances at chapel and in student concerts throughout the year.

### PERSONNEL

PROF. ARTHUR T. VAWTER . . . . .	<i>First Violin and Director</i>
MISS NELLIE JUNE VAUGHN . . . . .	<i>Accompanist</i>
MARY HAYES, <i>Violin</i>	ROY PALMER, <i>Trumpet</i>
LOUISE MILLER, <i>Violin</i>	EUGENE BRASHER, <i>Trumpet</i>
MARY DOANE, <i>Violin</i>	MARQUIS MORGEY, <i>Trumpet</i>
MARY ELIZABETH PERRY, <i>Violin</i>	RALPH EVANS, <i>Trumpet</i>
JENNINGS BIEBEL, <i>Violin</i>	EDITH MYERS, <i>Trumpet</i>
ADOLPHUS BORBERG, <i>Violin</i>	WILLARD PAGE, <i>Trumpet</i>
ELEANOR THOMPSON, <i>Violin</i>	H. H. HARRIS, JR., <i>Trumpet</i>
ESTELLE PALMER, <i>Flute</i>	
RAYMOND E. DROWN, <i>Saxophone</i>	
KATHRYN JOHNSON, <i>Saxophone</i>	
LORENZO PARKER, <i>Saxophone</i>	

## THE DRAMATIC ARTS CLUB

SINCE the decline of the old literary societies the Dramatic Arts Club has had charge of dramatic work at Missouri Valley. This means that the presentation of plays is in the hands of those who are interested in it. The organization has a membership limit of sixty-five. It holds monthly meetings at which there are readings, one-act plays, music, and sometimes refreshments. Most of the business and routine work is done outside of the meetings by the executive and other committees.

The record of the Club has been a good one in this its fourth year. At the opening of the year the Club was just completing its Little Theater. Several of the members worked very hard during the summer and early fall that they might have an attractive room ready and a good stage for the monthly meetings and short plays.

This year the following short plays have been staged: "The Obstinate Family," "America Passes By," "Preparation for a Visit," and "Shylock," a cutting of "The Merchant of Venice." "Shylock" was the first attempt at any of Shakespeare's plays. The play was so well done that it was given a second time to allow those outside the Club a chance to see it.

In December "The Charm School" was presented, a delightful comedy of boarding-school life. Naturally many amusing situations developed. Maurice Morgan and Ruby Asbury had the leads.

For the Commencement play the executive committee has found what it thinks to be an exceptionally good one. It is always the desire of the Club to put on each year one play in which the serious elements predominate. Likewise it wants one play the setting and atmosphere of which are somewhat out of the ordinary. The committee feels that it has found in Justin McCarthy's "If I Were King" a play which has both of these qualities. The committee made a trip to Kansas City to see "The Vagabond King," the operetta taken from the play. It is planned to incorporate some of the music of the operetta into the play. Rolland Snuffer is to have the part of the vagabond who plays the king. The play should be one of the best ever produced at Missouri Valley.

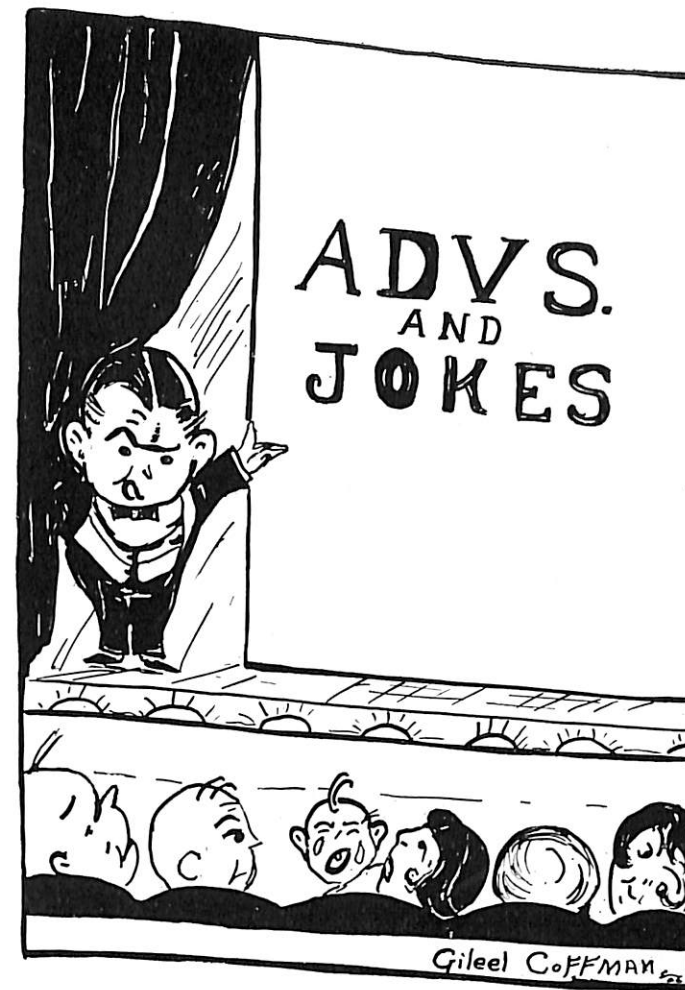
The Dramatic Club always has two social functions each year. Miss Dorothy Doane invited the members to her home for the party near the first of the year. Towards the close of the year there will be the formal banquet at which the officers for the new year will be installed.

### THE EXECUTIVE COMMITTEE

KENNETH WILLOUGHBY . . . . .	<i>President</i>
RUBY ASBURY . . . . .	<i>Vice-President</i>
DOROTHY DOANE . . . . .	<i>Secretary</i>
MONTAGUE HARVEY . . . . .	<i>Treasurer</i>
CORINE BACON . . . . .	<i>Membership Dept.</i>
ROY LINBERG . . . . .	<i>Publicity</i>
CONTE CLAY FLEMING . . . . .	<i>Plays</i>



*"The Charm School"—"If I Were King"*



## BUMPS AND MORE BUMPS

Joe Price: "Father, what do they mean by gentleman farmers?"  
Mr. Frerking: "Gentleman farmers? Why they are the farmers who seldom raise anything except their hats."

### THE INEVITABLE

"Any previous newspaper experience?"  
"No, but I was editor of my college paper."  
"Oh, I am very sorry. We have an editor."

### WEATHER FORECAST 1926-27

Rain, snow, or thunderstorms on every day the Sabiduria Staff sets for taking "snaps" for their feature section.

Phipps: "Dreger has lost that key again. I do believe he'd lose his head if it weren't fast."

Thomas: "I dare say you're right. I heard him say he was going to Nebraska for his heart."

Mr. Jones: "Betty, why are your grades so much lower this quarter?"

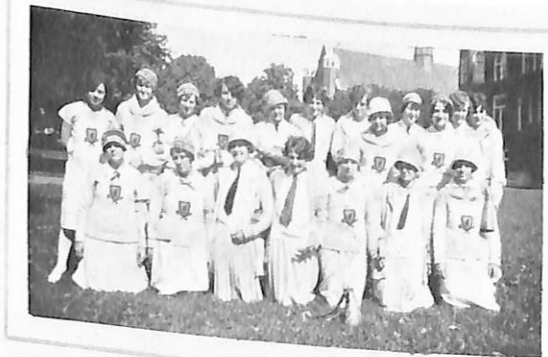
Betty: "Because everything is marked down after Xmas."

Dean Evrard: "Robert, give me a sentence using the word 'satiated'."

Dub: "I took Doris to a picnic last summer and I'll say she ate a lot."

Charles (holding forth to Edith): "You know, I'm funny like that—I always throw myself into any job I undertake."

Edith (sweetly): "How splendid! Why don't you dig a well?"



## CAMPUS CHATTER

Bill Stoll sends regrets

Dere Techer, i aint comin to Sunny School no more cause last you was lookin right at me when you said, who was it blew down the walls of Kanin, and i aint comin no more I'm always blamed for everything.

WILLIE

Policeman: "So you saw the accident, sir? What was the number of the car that knocked this man down?"

Prof. Ferguson: "I'm afraid I've forgotten it. But I remember noticing that if it were multiplied by fifty, the cube root of the product would equal the sum of the digits reversed."

The three R's that formerly were Readin', 'Ritin', and 'Rithmetic, have changed to Rah, Rah, Rah.

Mr. Waters: "Now that I have decided to give you the job, I must tell you that early hours are the rule of this establishment."

Pete: "That's good, you can't close too early for me."

M. F. Carpenter: "How long did it take you to learn to skate?"

Frances Smiles: "O, several sittings."

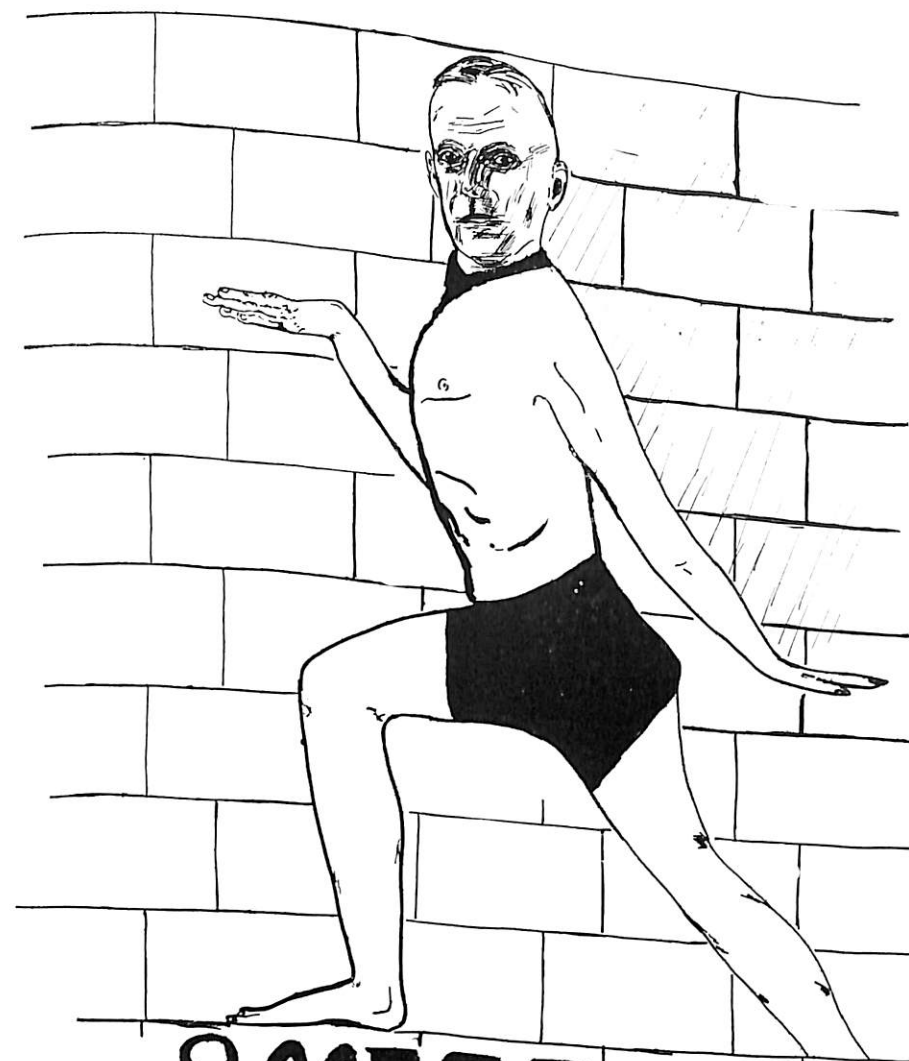
A few of Shakespeare's famous plays are: King Liar, A Merchant of Venus, Old Fellow, McBath and Omlet.

Jones: "Isn't that an attractive building?"

Danford: "Yes, that's the insane asylum; everybody's crazy about it."

"I wish you wouldn't whistle at your work."

E. P. L.: "I ain't a-workin', ma'am; I'm only whistling."



**200 B.C. DANCING**

Gisela COFFMAN  
726

LET'S PLAY IT OUT

<p>SEPTEMBER</p> <p>1—Our "Welcome to MVC" sign is read by 97 diamonds in the rough. Touching reunions. 2—YM and YW fry their own. Faculty "Pass out" at first Chapel. 3—Gephart only man</p>	<p>takes six counts. 8—The Eagle soars high in Fayette. Most of us see it done. 12—"Shylock" at your door. 14—Willoughby, Pooley and Snuffer co-stars in "Running Wild." 15—Our gang wins</p>	<p>dressed at Joint Social. Coach harangues at holy roller Camp Meeting. 39—husky converts. 6—"The stag at eye." "Follow the gleam" to the bleachers. 7—Odel Endeavors to entertain new folks.</p>
<p>ween party. Gephart just will dress up. 31—Doc Lowe reviews for football men some of the best plays Moses and Joshua made.</p>	<p>NOVEMBER</p> <p>1—School camps in library to avoid YW pledge campaign. 3—Finest pep meeting of the year. 4—Finest game of the year. Cardinal team sees ten purple stars and one red one</p>	<p>from Mo. Wes. for the first time in 27 years. Had a parade in the evening and rushed—er no—we didn't. 17—Gospel Team enthusiastic over meeting at Mt. Olive. Both body and soul secured to</p>
<p>DECEMBER</p> <p>2— <b>MR. McDANIELS</b></p>	<p>3—We embarrass our heroes: a banquet with sweaters. 7—The "Charm School" spurns the Chapel. 10—Valkyrs entertain their "Horses" in the Gym. 17—The Madonna, angels and</p>	<p>3—We embarrass our heroes: a banquet with sweaters. 7—The "Charm School" spurns the Chapel. 10—Valkyrs entertain their "Horses" in the Gym. 17—The Madonna, angels and</p>
<p>set dope by beating Kemper. 14—We upset dope by beating Jr. College. Y feed in Gym for girls. "Theory of Gov't" to the Unit Club, by Dr. Braden. 16—Doc Love has 17 women</p>	<p>on his hands. 27—Monte Carlo thrills at the McQuiddy Senior affair. 22—We barely upset dope by beating Bill Jewell. 31—The Art Club makes its existence known. "Banana</p>	<p>comes into her own in our tournament. 14—We upset dope by beating Cewescoes. 15—"Forteserant ante Agememnonem et Fette." Girls limp in from Higginsville at three</p>
<p>tuted. "Lest we forget, Lest we forget." 30—So's your old nan.</p> <p>MARCH</p> <p>3—New Quarter ushers in a few college widows. 7 to 14</p>	<p>dope, losing to Jr. College. 8—We upset dope by beating CS. "Hold 'em, Demus, I know you can." 10—The boys return and the girls leave. There ain't no justice! 12—Alma</p>	<p>—Dr. Gardner does his best for us. 15—Dr. Pettijohn organizes handball class. This tendency to overemphasize athletics is ruining the colleges. 18—Male bipeds in various</p>
<p>Pete' gets across. 15—Good Friday celebrated quietly at home. YW performs in Chapel. 18—Our very own Ship of State, with Conrad at the helm, is given "Bon Voyage." 20—</p>	<p>We solve Rockhurst's mud ball. 26—"Fichtorn's Follies" are ours.</p> <p>MAY</p> <p>6—Students take a holiday! Well, let</p>	<p>6—Students take a holiday! Well, let</p>

THIS LITTLE GAME CALLED LIFE

ACT WELL THEY PART

<p>10—Freshmen avort on the common. 16—Student officers elected. They can't help it. 20—Sab makes announcements to student body. Freshmen listen eagerly. 21—"Backward, turn, etc." Coach</p>	<p>and Sambo in the Gym. 24—Town buys gobs of football tickets. 30—First bleacher moving here. Now, where, Nell, were the Freshmen?</p>
<p>have been well fed. 19—D. A. C. throws boots and shoes at party for new members at the Doanes'. 21—State CEers given key to the village. 22—C e n. W e s. had a chance. 24—Endeavorers dissi-</p>	<p>date with an early A.M. breakfast in our Gym. 28—We delay new library workmen and put in one stone for them. 29—We decorate Gym and entertain ourselves at the inevitable faculty Hallo-</p>
<p>and their finish. K. C. is on the way to Liberty, we learn. 12—Westminster did and we didn't. 19—We choose Norma. "Amateur Night," a red-hot evening with several cold spots.</p>	<p>25—We are thankful—at least—for the holiday. 29—Each class selects their queenliest—no light task.</p>
<p>Xmas music in the morning. In the P.M., St. Nick brought us a basket ball victory, several presents for the faculty, and a sociable.</p>	<p>JANUARY</p> <p>4—Miss von Tobel breaks her first New Year resolution. Mrs. Armentrout departs for regions where men are men. Mrs. Hagedorn puts up new curtains. 11—We up-</p>
<p>"Oil," say we.</p> <p>FEBRUARY</p> <p>1—The old folks entertain the Seniors with a pink and blue candle service at Vawters'. 2—We upset dope by beating</p>	<p>Jewell again. Boys' Glee Club taking in the bright lights and the gay of St. L. 3—We upset dope: beat Mo. Wes. Boys sang for their 17 suppers at the St. L. City Club. 4—We upset</p>
<p>o'clock in the A. M. 18—We ups—NO, Westminster does. 22—The Deans of Men and Women leave for Dallas. Tsk! Tsk! Tsk! 23—Doc Lowe makes speech to favored few. It</p>	<p>appears that the secret order that has been flourishing in our midst, will go the way of all flesh. 24—We up—etc., Central. 28—The Modernists win—two-hour exams, insti-</p>
<p>states of undress gambol blithely about the campus. 25—Mother Black installs YW officers—Doc Lowe the boys.</p> <p>APRIL</p> <p>1—Doc Lowe's farewell party. 3—</p>	<p>He leaves. 4—Snuffer inconsolable over Mary Lee's departure. 5—The basket ball party. More sweaters. 8—Ruby serves strawberries to the Seniors. 12—"For the Love o'</p>
<p>em, say we. 10—But say, we've gone to press long ago. 13—The May Fete—Herds of damsels gallop on our terraces. 14—Seniors are measured for their kimonos. 22—Ves-</p>	<p>pers just for the Seniors and their friends. 23—"Somebody's Daughter." 24—No farce like an old one. 25—"If I Were King." Yes? 26—"Well, wouldst goto school forever?"</p>

THERE ALL THE HONOR LIES

## QUEEN OF THE MAY

We see you, Norma, queen of grace,  
As we have oft in room and aisle,  
With not an act or thought that's base,  
With not a touch of any wile,  
But always with Madonna face  
And Mona Lisa smile.

We pray you put upon us all  
The graces that you ever glean,  
That those to whom the honors fall  
Of greeting Norma as our queen  
May live, at your behest and call,  
Lives happy as this May Day scene.

In all our hearts you have a place  
Because your life is without guile,  
Because of your Madonna grace,  
Your Mona Lisa smile.

I. N. E.

## Missouri Valley College

MISSOURI VALLEY COLLEGE welcomes to its student body those young men and women who have superior aims and ambitions. The student body is made up of students who live simple, wholesome lives.

The scholarship of the College is recognized by such agencies as the American Association of Colleges and the North Central Association. The faculty is well trained and takes interest in the individual student.

The Christian ideals are held before the students constantly. Without cant or pretense, the life on the campus is dominated by the Christian principles.

The students find pleasure and self-expression through athletics, dramatics, debating, glee clubs, and other organizations.

*For information, address your correspondence to*

**MISSOURI VALLEY COLLEGE**

MARSHALL, MISSOURI

## WHY NOT HAVE

### A SAVINGS ACCOUNT

To which you add a certain set amount of your income every week or month? It will stand you in good stead some time in the future.

### A CHECKING ACCOUNT

So that you can pay all your bills by check—the safest and most convenient way?

### A SAFE-DEPOSIT BOX

To protect your insurance policies—your will—your securities—your jewelry and other valuables?



**BANK of MARSHALL**

MARSHALL, Mo.

## *Louisville Presbyterian Theological*

**S**—Strong Faculty

**E**—Equipment Modern

**M**—Most Beautiful Buildings in South

**I**—Ideal Location.

**N**—Near all Libraries and Institutions

**A**—Adjacent to City Churches

**R**—Recreational Opportunities—Golf, Tennis, Basket Ball, etc.

**Y**—Y. M. C. A. Privileges



*Write to*

**JOHN M. VANDER MEULEN**

*President*

109 EAST BROADWAY

LOUISVILLE, KY.

# The FISHER BOOK STORE

BOOKS and STATIONERY  
SCHOOL BOOKS, FRAM-  
ING and PICTURES  
SCHOOL SUPPLIES

*We Appreciate Your  
Patronage*

When You Need Anything in  
GROCERIES OR  
QUEENSWARE

Give Us a Trial

E. R. LATIMER

*Groceries and  
Queensware*

NORTH SIDE SQUARE PHONES 11-12

TRUSTWORTHY  
SHOES

QUALITY  
CLOTHING

*“The Store of Courtesy  
and Convenience”*

## Lloyd & Tipping

MARSHALL, MO.

Page 102

Al's Butter Krust  
and  
Luxury Bread

Marshall Baking  
Company  
MARSHALL, MO.

NEWTON AND  
COMPANY

LOANS, ABSTRACTS  
and INSURANCE

PHONE 138  
WEST SIDE SQUARE  
MARSHALL MISSOURI

FOR LAUNDRY WORK THAT IS DIFFERENT, CALL 209

## Marshall Laundry Co., Inc.

*“The Home of Clean Clothes”*

FRED E. DOANE, *Manager*

The only place in Saline County where  
you can send your clothes and have  
them laundered in pure soft water—  
at all times—hence—

*Where Quality Counts, We Win*

56-62 WEST MORGAN STREET

MARSHALL, MO.

Page 103



Cleanliness and Beauty  
restored "safely" to all  
wearing apparel

*Prompt Service  
Fair Prices*

**C. T. BOULWARE  
TAILOR SHOP**

115 E. ARROW  
MARSHALL MISSOURI

HAVE A KOLSTER RADIO  
DEMONSTRATION

**ELECTRICAL  
APPLIANCES**

Contracting and Repair

*"Notice the Lighting  
Equipment Wherever  
You Go"*

**Star Electric Shop**

PHONE 146  
MARSHALL MISSOURI

**NOOPS**

PHONE 544 168 S. JEFFERSON

**Champion Shoe Shop**

H. F. MCGEE, *Proprietor*

We Call for and  
Deliver Work

*"Service That Satisfies"*

Page 104

**DR. GEORGE T. NUCKLES**

*Osteopathic Physician and Surgeon*

X-RAY AND PHYSIO-THERAPY

Office—Marshall Building

OFFICE PHONE 351

RESIDENCE PHONE 566

**Publicity and Quality Printing**

*Go Hand in Hand*

It is seldom thought of—this publicity  
business—other than the fact that it  
gets the crowd to the ball game, the  
college play, the recital, or any other  
college activity which may be staged.

But, did you know, or stop to think,  
that the local paper—this paper in this  
instance—necessarily bears the expense  
of an exceedingly large volume of FREE  
publicity?

And for that reason—if for no other, and there are  
others—don't you think this plant should by all  
means be given the commercial work of each of  
these entertainments, such as programs, window  
cards, tickets, etc?

**The Democrat-News Printing Co.**

*"Across Street From Post Office"*

MARSHALL, MO.

Page 105

SEDALIA—MARSHALL  
BOONVILLE

## BUS LINE

*Three Round-Trips  
Daily*



HEADQUARTERS

LA MOORE HOTEL—SEDALIA  
GOODWIN HOTEL—MARSHALL  
FREDERICK HOTEL—BOONVILLE

Delph & Short

## *Marshall Floral Company*

IMMANUEL WITTRUP  
*Manager*

The latest and most up-  
to-date Floral Establish-  
ment in Central Missouri.

*Flowers Delivered Fresh  
Anywhere on Earth*



MARSHALL MISSOURI

## CANDYLAND

FANCY ICE CREAMS, SHERBETS, HOT  
AND COLD DRINKS AND SANDWICHES

WE APPRECIATE THE COLLEGE'S  
PATRONAGE

*"The Only Real Confectionery in the City"*

PHONE 131

## DRY GOODS

SILKS, WOOL DRESS  
GOODS, COTTON  
DRESS GOODS, SILK  
*and* COTTON DRESS  
GOODS, GLOVES, COR-  
SETS, UNDERWEAR,  
HOSIERY, CURTAIN  
GOODS, BAGS, BUT-  
TONS, FANCY  
NOVELTIES



E. M. WRIGHT

MARSHALL MISSOURI

## CLIFF B. GOODWIN

WHOLESALE GROCER  
COMPANY

We Feature Quick Service  
to Retail Dealers

MARSHALL SLATER  
PHONE 5 PHONE 57  
PHONE 56



*100% for Missouri Valley  
College*

## MUNICIPAL UTILITIES

*Water + Light  
Power*



75 SOUTH LAFAYETTE AVENUE

PHONE 49

MARSHALL

MISSOURI

WE frankly admit to the reader that we are conspiring to acquire and retain your patronage, and we believe that our customers will regard it as a defensible and even commendable conspiracy.

*Lawless*  
*Mercantile Co.*

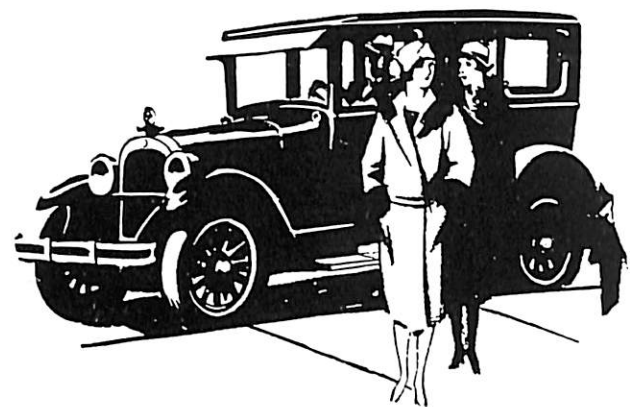
SOUTH SIDE SQUARE

PHONE 240

For the latest and  
Most Exclusive  
styles in Ladies'  
and Misses'

*Wearing*  
*Apparel*

RICHMAN'S  
STYLE SHOP



MID-STATE MOTOR Co.

DODGE BROTHERS  
MOTOR VEHICLES

GRAHAM BROTHERS TRUCKS  
MARSHALL, MO.

Page 108

The SABIDURIA

MARSHALL  
PRODUCE  
COMPANY

MARSHALL, MO.

POULTRY  
EGGS  
BUTTER  
HIDES

*Top Market Prices Always*

TONY DAVIS

*The Tailor*

If your clothes are  
not becoming to you,  
you'd better be com-  
ing to me

*Second Floor*  
EAST SIDE SQUARE  
MARSHALL, MO.

QUALITY  
MEAT MARKET

QUALITY, SERVICE  
AND PRICE

PHONE 900

Page 109

The SABIDURIA

WHO?  
SALINE COUNTY FARMERS'  
ASSOCIATION

WHERE?  
362 WEST NORTH ST.

WHAT?  
**Checkerboard  
Chows**

NATHAN T. LENTZ

*Special Agent*

New York Life Insurance  
Company

MARSHALL MISSOURI

FRED FAIR

*Lawyer*

BANK OF SALINE BUILDING

PHONE 836

MARSHALL MISSOURI

## OUR TOWN MARSHALL

SURELY one of the prime requisites of success is loyalty to town, state and nation. The Oath of Allegiance which the youth of Athens was compelled to take, and the Spirit of Town Loyalty which it developed in all Athenians lay at the root of the great success achieved by the city when it made history. And the basis of our own government, too, is this same loyalty. This Big Store is the result of never-ending loyalty to the institutions of our home town.

*Central Missouri's Largest  
Department Store*

**Missouri Valley Stores Co.**

THE  
**AUDITORIUM  
THEATER**

*Quality Entertainment  
Always*

OPERATED BY  
**Sears Amusement  
Corporation**

RAY HUGGINS

*Resident Manager*

R. D. JOHNSON

*Attorney at Law*

PHONE 383

MARSHALL MISSOURI

W. H. Meschede

*Attorney at Law*

BANK OF SALINE BUILDING

*Established in 1870*

**Farmers Savings Bank**

MARSHALL, Mo.

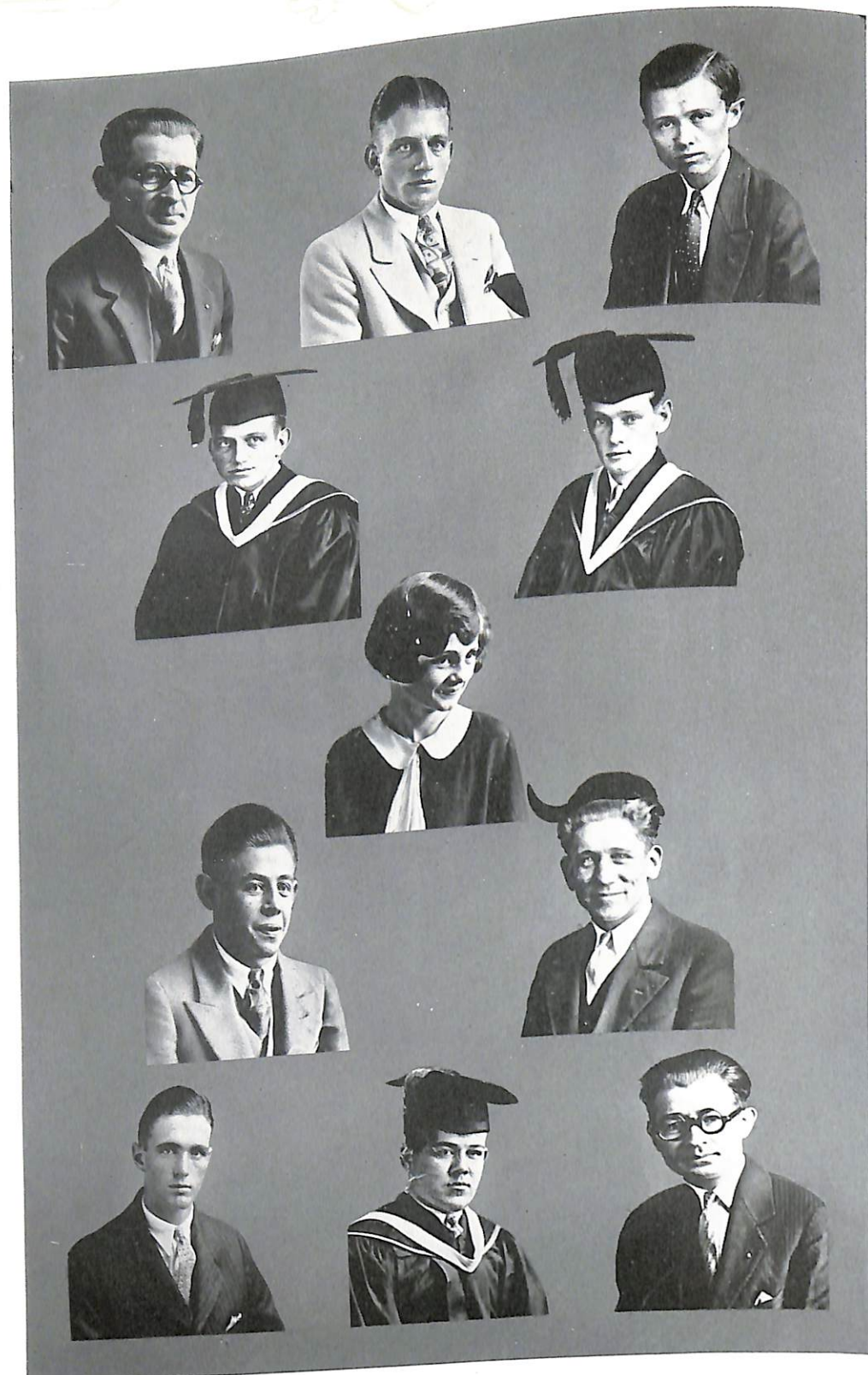
STRONG

CONSERVATIVE

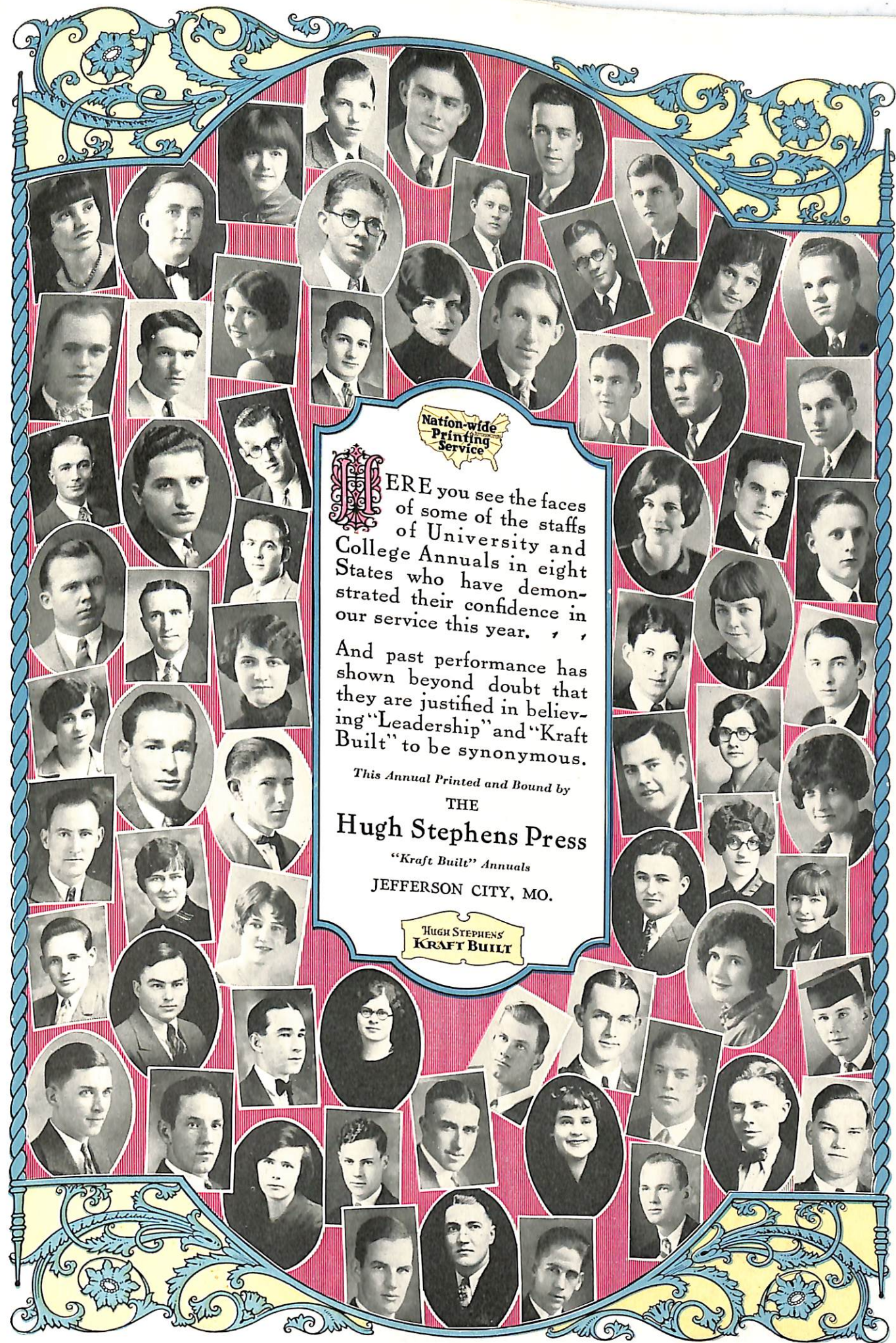
COURTEOUS

EXPERIENCED

*"Service That Satisfies"*



Raw Material



Nation-wide  
Printing  
Service

HERE you see the faces of some of the staffs of University and College Annuals in eight States who have demonstrated their confidence in our service this year.

And past performance has shown beyond doubt that they are justified in believing "Leadership" and "Kraft Built" to be synonymous.

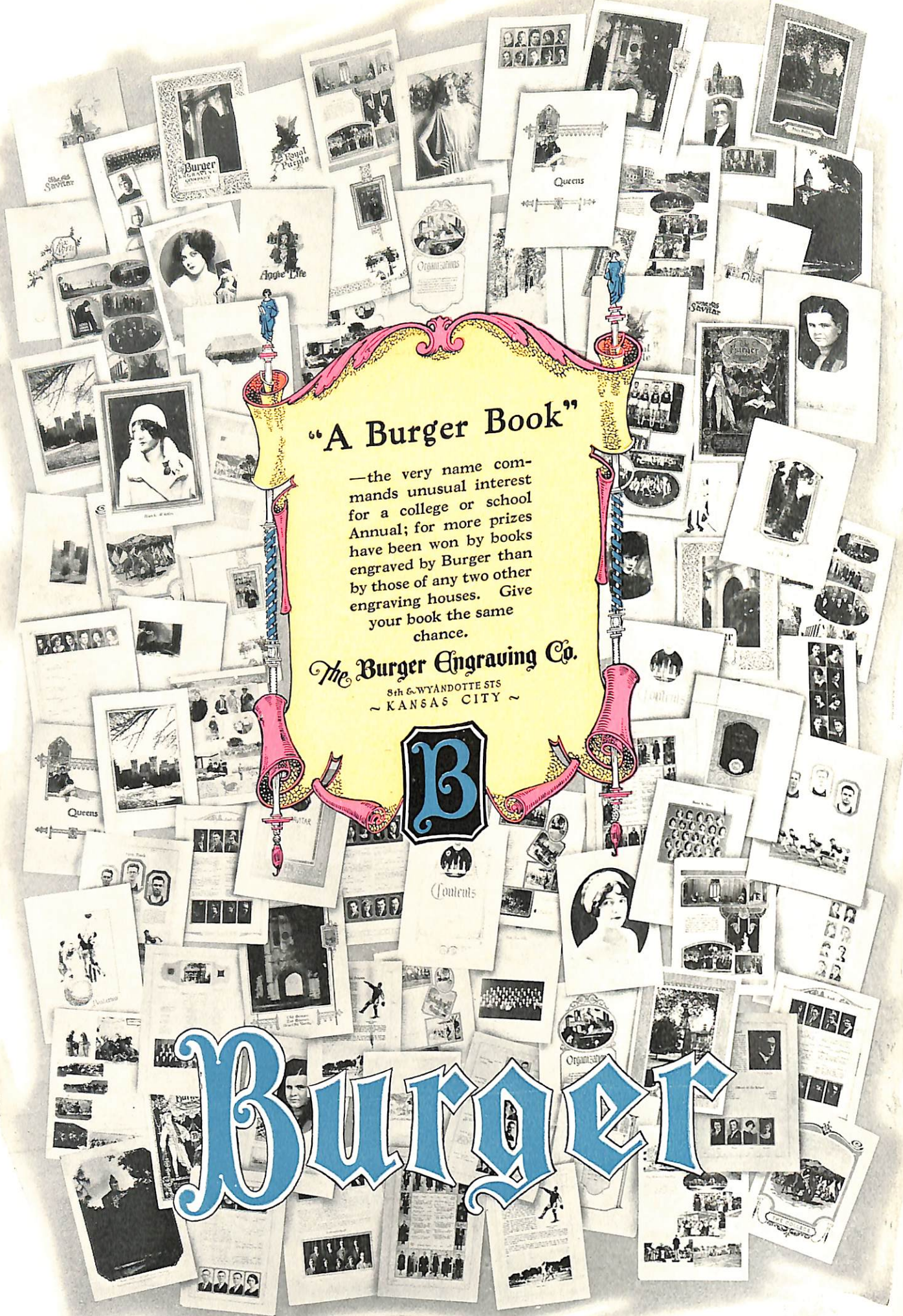
This Annual Printed and Bound by

THE  
Hugh Stephens Press

"Kraft Built" Annuals

JEFFERSON CITY, MO.

HUGH STEPHENS  
KRAFT BUILT



**"A Burger Book"**

—the very name commands unusual interest for a college or school Annual; for more prizes have been won by books engraved by Burger than by those of any two other engraving houses. Give your book the same chance.

**The Burger Engraving Co.**  
 8th & WYANDOTTE STS  
 ~ KANSAS CITY ~



**Burger**



**HOUX BROS.**

SHOES, HATS  
 and HOSIERY  
 and  
 M. V. C.

*Are Sure Winners*

**DANIELS  
 LUMBER CO.**

EVERYTHING IN THE  
 BUILDING  
 LINE

R. M. PHILLIPS, *Manager*  
 PHONE 137

COMPLIMENTS  
 of

**J.C. Penney Co.**  
 A NATION-WIDE INSTITUTION  
 INC. DEPARTMENT STORES

**BELL—FULLER  
STORES CO.**

DRY GOODS  
AND NOTIONS  
LADIES' READY-  
TO-WEAR

*Bargain Basement*

**ARTHUR BURKS  
BAKERY**

SALLY ANN BREAD  
CAKES AND PIES

**OFFICERS**

HARRY C. FRANCISCO, *President*  
G. E. C. SHARP, *Vice-President*  
D. R. HARRISON, *Vice-President*  
T. L. YANCEY, *Cashier*  
H. B. ROBINSON, *Asst. Cashier*

**DIRECTORS**

H. C. FRANCISCO    F. H. NAYLOR  
G. E. C. SHARP    C. B. BACON  
C. I. DUNCAN    A. R. JAMES  
S. W. WILKINSON

**BANK OF SALINE**

MARSHALL, MO.

CAPITAL AND SURPLUS, \$125,000.00  
WE SOLICIT YOUR BUSINESS

Page 114

The SABIDVRIA

**COLVERT BROS.**

*We Handle*  
RED LABEL, OLD  
BEN and PURITY  
COAL, WOOD,  
TILE, CRUSHED  
ROCK AND SAND

OFFICE PHONE  
89

YARD PHONE  
76

HART SCHAFFNER &  
MARX and CAPPES &  
SONS CLOTHES

W. L. DOUGLAS  
SHOES

**Cooper Clothing  
Company**

*The Store That Saves You  
Money*

**MARSHALL LUMBER CO.**

EVERYTHING  
*to build anything*

PHONE 142

Page 115

The SABIDVRIA

**EWELL BROS.**

*Groceries*

MEATS and QUEENSWARE



BELL TELEPHONES—63-64

EAST SIDE SQUARE

JOE BARNHILL    HERBERT LINDSEY

*Advertising*  
BARCO PRINTERS  
and SIGN PAINTERS  
*Publicity*

"We're not on the Square, but  
we're straight"

PHONE 95    MARSHALL, MO.

**NEWMAN SHOE  
SHOP**

FIRST-CLASS SHOE  
REPAIRING

*While You Wait*

107 E. NORTH STREET

BREAK WINTER'S BACKBONE WITH COAL  
*We Have the Best*

AND SUMMER'S HEAT WITH ICE  
*We Make It*



**MARSHALL ICE, STORAGE and  
FUEL COMPANY**

PHONE 31

Page 116

WHEN DOWN TOWN  
VISIT

*The Vogue*

*Marshall's Style  
Center*

LADIES' and MISSES'  
READY-TO-WEAR

EXCLUSIVE BUT NOT  
EXPENSIVE

**ROSE SCHRECKLER**

  
**JEWELER**

West Side Square, MARSHALL, MO.

**W. L. CARTER**

A. B., D. D. S.

*Dentist*

X-RAY

202 FARMERS SAVINGS BANK  
BUILDING

**BUICK and STAR CARS  
REAL AUTO SERVICE**

**REA GARAGE**

PHONE 45

EXIDE BATTERY SERVICE

Page 117

<p>W. V. TIPPING ART MEMORIALS</p> <p style="text-align: center;">☞</p>	<p>R. L. BANTZ <i>Dentist</i></p> <p>SHARP AND HAHN BUILDING</p>
<p>Myers &amp; Corder GROCERIES AND QUEENSWARE</p> <p>PHONE 42</p> <p>MARSHALL MISSOURI</p>	<p>C. A. TITTERINGTON <i>Dentist</i></p> <p>RES. PHONE 421 OFFICE PHONE 420</p> <p>MARSHALL MISSOURI</p>

**MAUDS**  
THE FLOUR THAT SATISFIES

☞

**THE REA & PAGE MILLING CO.**  
MARSHALL, MISSOURI

<p>WELLS &amp; DURRETT</p> <p><u>Groceries</u></p> <p style="text-align: center;">☞</p> <p>SOUTH SIDE SQUARE PHONE 158</p>	<p>B. E. SHAW <i>Dentist</i></p> <p>ORTHODONTIA A SPECIALTY</p> <p>PHONE 299</p> <p>BANK OF MARSHALL BUILDING</p>
	<p>Ed. H. Mitchell</p> <p>INSURANCE AND LOANS</p> <p>PHONE 130</p>

DRUGS  
PRESCRIPTIONS  
KODAKS  
SODA WATER  
CANDY

☞

WE wish to thank the students and faculty of Missouri Valley College for their patronage in the past, and will always strive to merit your continued support.

**RED CROSS PHARMACY**  
G. C. WATERS

LACROSSE LUMBER  
COMPANY

Since 1888

PHONE 7

MARSHALL

MISSOURI

*Come to Us For—*

PERFUME, FACE POW-  
DER, TOILET WATERS,  
BILL FOLDS, SHAEFFER  
LIFETIME, PARKER  
DUOFOLD, or CONKLIN  
PENS and PENCILS,  
STATIONERY, and  
COSMETICS

WM. S. LAURIE

NORTHWEST CORNER SQUARE

THE HOTEL RUFF

*Club Luncheons and Dinners a  
Specialty at Popular Prices*

*Special Sunday Dinners*

J. F. OWENS

*Manager*

Page 120

The SABIDVRIA

GROESCHEL  
COMPANY

*Contractors*

PLUMBING and  
HEATING



111 E. MORGAN STREET

H. W. WINN

GROCERY

STAPLE AND FANCY  
GROCERIES



PHONE 400-401

FOR thirty-seven years Seniors and under-  
graduates have found in this store the *three*  
*essentials* of profitable shopping

STYLE—*Right*

SERVICE—*Courteous*

QUALITY—*The Highest*

Rose & Buckner

Page 121

The SABIDVRIA

## *Distinction*

WE maintain shops devoted to the requirements of High Schools, Colleges and Universities . . . Class Pins and Rings—Commencement Cards . . . All are designed and created by our artists and craftsmen. The highest degree of excellence is assured.

*Inquiries Receive Immediate  
Attention*



*Faccard Jewelry Company*

1017-19 WALNUT STREET  
KANSAS CITY, MISSOURI

NOTHING you can give those who are near and dear will please them more than *your* photographs . . . and with each passing year these treasured records become more precious.

*Photographs*

LIVE FOREVER



McCHESNEY'S STUDIO

**BRING YOUR  
BATTERY  
TROUBLES  
HERE**

*Service On All Makes*



**SERVICE STATION**

120 N. Lafayette Avenue

PHONE 8

MARSHALL, MO.

**SMITH'S  
MARINELLO  
SHOP**

*The Shop of Quality*

PHONE 502

We do not use electricity in  
our Permanent Waves

COMPLIMENTS OF

**OWEN, SAYLER and  
PAYSON**

*Architects*

Office, 505 Interstate Bldg.

PHONE, VICTOR 0110

KANSAS CITY

MISSOURI

**YOUR CHECKING *and*  
SAVINGS ACCOUNT  
SOLICITED**



**WOOD & HUSTON BANK**

*Member of Federal Reserve System*

MARSHALL, MISSOURI

CAPITAL AND SURPLUS—\$300,000.00

**YELLOWAY  
BUSSES**

*Longest Bus Line in the  
World*

KANSAS CITY TO

Denver.....	\$12.50
Los Angeles.....	37.50
St. Louis.....	7.00
Chicago.....	12.50
Detroit.....	19.50
Omaha.....	5.00
Tulsa.....	7.00
Fort Worth.....	12.50
St. Joseph.....	1.50
Marshall.....	2.75

*Bus Depot*

**MERCER HOTEL**

TWELFTH AND MCGEE STREETS

PHONE HA. 5358

**GOOD THINGS TO EAT**  
*That's Our Business*

PHONE 968

*College Inn*

**Missouri Ice Cream  
Company**

WHOLESALE MANUFACTURERS  
OF

**BUTTER, ICE CREAM  
AND ICES**

MARSHALL

MISSOURI

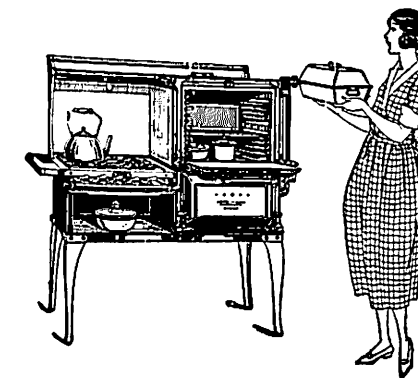
**EFFICIENCY**

*In The KITCHEN*

*Means*

**ECONOMY**

*In THE HOME*



COOK WITH GAS

*Missouri Gas and Electric Service Co.*

18—PHONE—18

## WELL, YOU DID

Lo Neta: "I heard about something that sure takes the cake."  
K. Conrad: "Whatwazit?"  
Lo Neta: "Your mouth."

## AS WE ALL THINK

Ruth Zahn: "Did you knock 'em cold in the Latin quiz?"  
Elizabeth G.: "Yes, zero."

Burke: "Think of those Spaniards going 2,000 miles on a galleon."  
Brownie: "Aw, forget it. Yuh can't believe all you hear about those foreign cars."

Coc: "Gosh, you're dumb. Why don't you get an encyclopedia?"  
Bunnie: "Not for me—the pedals hurt my feet."

## IN THE DORMITORY

Mabel: "What is this you are serving?"  
Demus: "Chicken a la king."  
Mabel: "Very poor."  
Demus: "Well, kingz ain't so much nowadays."

Mrs. Barrett: "H. H., take this sentence: 'The automobile was going fifty miles an hour.' Now, can you parse it?"

H. H. H.: "No, but I'll bet dad could if his car was working right."

Willard, if you must blow your own horn, at least vary the tune occasionally.

Russell Lamar: "I hear you are quite a musician."

Cecil: "Oh, no. I just play a saxophone."

CLEANERS and TAILORS

GLASS BROS.

WEST SIDE SQUARE

PHONE 105



"We Clean While  
Others Try"



Our stock of beautiful  
gifts for the Graduate  
and other presentation  
purposes is ready for  
your inspection.

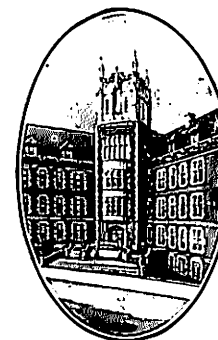
J. W. BROWN

Jeweler

"THE RADIOLA SHOP"

MARSHALL, MO.

Three Doors West of Wood and  
Huston Bank



THE WESTERN THEOLOGICAL  
SEMINARY

PITTSBURGH, PA.

*A Seminary for College Graduates*

A complete modern theological curriculum with elective courses  
leading to degrees of S. T. B. and S. T. M.

Graduate courses of the University of Pittsburgh, leading to  
degrees of A. M. and Ph. D., are open to properly qualified students  
of the Seminary.

The city of Pittsburgh offers an unusual field for the study of the problems and work of  
the modern church.

Exceptional library facilities. Seminary library of 40,000 volumes of theological literature.  
North Side Branch of Carnegie Library is within five minutes' walk of the dormitory.

Post-graduate fellowship of \$600, providing for a year of study in a European University.  
Two entrance prizes of \$150 each, awarded on the basis of a competitive examination to college  
graduates of high rank.

All the public buildings of the Seminary are new. The dormitory is equipped with the  
latest modern improvements, including gymnasium, social hall, and students' commons.

ONE HUNDREDTH YEAR BEGINS SEPTEMBER 20, 1927

FOR INFORMATION APPLY TO

President JAS. A. KELSO, Ph. D., D. D., LL. D.

THE  
MISSOURI VALLEY COLLEGE  
IS  
SINCERELY THANKED  
FOR  
PAST AND FUTURE PATRONAGE



*Inter-Collegiate Press*  
Manufacturing Jewelers and  
Stationers  
KANSAS CITY, MISSOURI

CHECK off the good old  
friends on your gift  
list and send them the one  
thing they will appreciate  
most—your portrait.  
It will be a wonderful gift  
for the family, too.

*Collis Studio*

F. D.  
JONES COAL CO.

PHONE 193

*It's a Black Business  
But We Treat You White*

"OUR COAL MAKES WARM  
FRIENDS"

EVERY CENT  
Invested with us for  
SHOES  
will come back to  
you with interest  
in Service, Hand-  
someness and  
Comfort.

*Try Us*

PROGRESSIVE  
SHOE  
SHOP

McKinney Motor Company

*Chevrolet*

FOR ECONOMICAL  
TRANSPORTATION



259 WEST NORTH STREET

MARSHALL, Mo.

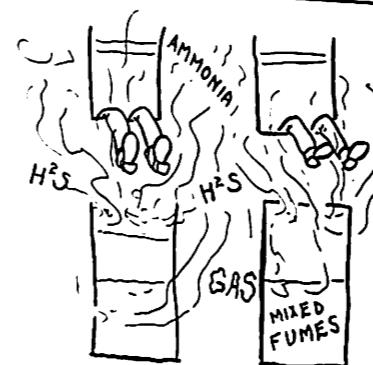
DRS. OTOUPALIK and  
OTOUPALIK

PALMER CHIROPRACTORS

*Keep Smiling*

PHONE 494

MARSHALL MISSOURI



*Most Any Hour*



## QUITE SO!

Mr. Duncan (after kissing his wife): "Now I have two letters to dictate."

Salyer: "What is the rent of your room, Bill? I suppose they ask a lot for it?"

Bill Sterrett: "Yes, all the time."

When a fellow needs a friend—  
Of all sad words  
A man to jar,  
"Another note  
Due on your car."

Doc (in crowded corridor): "Stop pushin', can't yer—?"  
Twyman: "I ain't pushin', I only sighed."

### ECONOMICAL SHORT STORY

Rich girl. Motor car. Lonely road. Breakdown. Ruffian. Scream.  
Poor boy. Rescue. Swoon. Love. Elopement. End.  
Net saving—6,894 words.

A college man is as good a dresser as his roommate.

"How is your daughter making out at cooking school, Mr. Perry?"  
"Well, she passed high in angel cake, but flunked in waffles."

Coc: "What kind of sandwiches have you?"  
Danford: "Ham bread, ham roll, cheese on bread, cheese on roll, chicken salad on bread, tomato on bread, combination salad rolls, hot dogs, olive on bread, pimento on bread, tuna fish on bread."  
Coc: "All right, bring me a dish of chocolate ice cream."

Dentist: "You yelled like a wild man. I thought you had a little nerve."  
Burke (nursing his jaw): "Well, I did. You'll find it in that tooth."

Page 130



Page 131