

MISSOURI VALLEY COLLEGE



3 7010 00239656 8

SABILDURIA

MVC
378
Sal
1936
C.2

1936



Copyright
Rachel McLeod, Editor
Paul Barnhill, Business Manager

SABIDURIA

1936

of
MISSOURI VALLEY COLLEGE
Marshall, Missouri



CONTENTS

ADMINISTRATION	- - - - -	6
STUDENTS	- - - - -	18
ACTIVITIES	- - - - -	34
ATHLETICS	- - - - -	52
FEATURES	- - - - -	64
INDEX	- - - - -	85
ADVERTISERS	- - - - -	87



DEDICATION

IN RECOGNITION AND APPRECIATION OF
HIS SERVICE
TO THE COLLEGE AND THE STUDENTS
THE 1936 SABIDURIA
IS RESPECTFULLY DEDICATED
TO

Dr. William Roy Mitchell

*I am glad you stopped in for
a while and hope this Ed-Book
may help you in your work.*
W. R. Mitchell

6/57

36926
c.2



ADMINISTRATION



President



*President's Message:
Missouri Valley College
by its*

President, Faculty, and Trustees expresses gratification in the record made during the past year. It has been a year of re-adjustment, of solid work, and of real achievement.

We give an affectionate good-bye to the class of 1936, bidding them return to the campus whenever possible. And we will, in September, welcome all returning students, and all high school graduates who become the Freshman Class of 1936-37.

George Herbert Mack was graduated from Missouri Valley College in 1898 with a Bachelor of Arts degree. He then attended Cumberland University and in 1901 received a Bachelor of Divinity degree. In 1910 he received his Doctor of Divinity degree from the same university.

He held pastorates at the Harris Street Presbyterian Church in Atlanta, Georgia, the Garden Street Presbyterian Church in Columbia, Tennessee, and the Russell

Street Presbyterian Church in Nashville, Tennessee.

From 1922-26 Dr. Mack was the Saint Louis District Secretary of the Presbyterian Board of National Missions, and from 1926-27 served as secretary on a similar board in Chicago.

In 1927, on the Mary Elizabeth Culver Endowment, he assumed the position of President of Missouri Valley College.

Deans



Ona Ruth Wagner, Dean of Women, received her A.B. degree from the University of Nebraska in 1915 and in 1920 received her M.A. from the same institution. Since that time she has done graduate work in the University of Wisconsin, Columbia University, Paris, France, and Nebraska University. She has taught as professor in history at Virginia College, Heidelberg College and the University of Nebraska. She has been Dean of Women at Virginia College and Heidelberg College, and was assistant to the Dean of Women at Nebraska University during 1934-1935.



Earl Pettijohn, Dean of Men, received from the University of Minnesota his B.A. in 1906; his B.S. in 1911; his Ph.D. in 1918. From 1909-1914 he was assistant in the Chemistry Department at the University of Minnesota, and in 1915 was instructor in Chemistry. From 1915-1918 he was in the Bureau of Standards at Washington, D. C., and from there went to Akron, Ohio, where he was a chemist for Firestone from 1918-1925. In 1925 he came to Missouri Valley as Professor of Chemistry and since 1925 has been Acting Dean of the College.

Faculty



MADELINE ASHTON: B.A. University of Kansas; M.A. Smith College; University of Geneva; Sorbonne, Paris; Ph.D. University of Illinois; Instructor at Hiram College, University of Illinois; Language and Literature, M. V. C.

WILLIAM IRA FERGUSON: B.A. Missouri Valley College; University of Chicago; M.A. University of Missouri; Instructor, Astronomy and Greek, College of Wooster; Professor of Mathematics and Astronomy, M. V. C.

CLAUDE LESLIE FICHTHORN: B.S. Missouri Valley College; M.A. Columbia University; Associate American Guild of Organists; Graduate Study, Paris, France; Dean of School of Music, M. V. C.

BELLE CAMPBELL HUFF: B.A., Litt.D. Missouri Valley College; University of Cambridge; University of London; Professor, American Mission Girls' College, Cairo, Egypt; Professor, Literature and History, M. V. C.

PERCY LEROY JOHNSON: B.S. University of Maine; M.S. Syracuse University; Ph.D. Johns Hopkins University; Assistant in Zoology, University of Maine, Syracuse University, Johns Hopkins University; Professor of Biology, M. V. C.



(12)



*John M. Raines
got used good copying*

WILLIAM WALLACE MALCOLM: B.A. Dalhousie University; B.D. Manitoba College; Ph.D. Hartford Seminary Foundation; Director of Religious Education, Winchester, Massachusetts; Professor Religion and Philosophy, M. V. C.

WILLIAM ROY MITCHELL: B.A. Lawrence College; Ph.M., Ph.D. University of Wisconsin; Assistant in Education; University of Wisconsin; Professor of Education, Registrar, M. V. C.

JOHN MARLIN RAINES: B.A., Mus.B. Tarkio College; M.A., Ph.D. Cornell University; Instructor in English, Muskingum College; Professor of English Language and Literature, M. V. C.

HENRY RENILE GODFRIAUX: B.A. William Jewell College; M.A. University of Wisconsin; Instructor, Plattsburg High School, Marshall High School; Director of Athletics, M. V. C.

ROBERT MURKLAND HALEY: B.A. Harvard; M.S. Oregon State College; Ph.D. Northwestern University; Instructor in Economics, Oregon State College; Professor of Economics, M. V. C.



Faculty

(13)

*Get come to see Miss Virginia Jones
and how is he today
Robert M. Haley*



MINNIE KOPF: B.A. Cornell College; M.A. Columbia Teachers College; Professor Home Economics, Central Normal College; Guilford College; Professor of Home Economics and Dietitian, M. V. C.

OPAL LOUISE MOORE: A.A. Stephens College; B.M. Northwestern University; M.M. American Conservatory of Music; Instructor in Piano, Millersburg College, Kentucky, and Cottey Junior College; Assistant Professor, Music, M. V. C.

DWIGHT MINER PASEK: B.S. Huron College; M.S. University of Michigan; Instructor in Physics and Assistant Business Manager, Huron College; Professor, Physics, M. V. C.

MRS. PEARL MOULTON CARDY: B.A. University of Missouri; Northeast Missouri Teachers College; Colorado Teachers College; Teacher, King City Schools; Instructor in English, M. V. C.

LOUISE DEGARIS: B.A. Smith College; Graduate Work, University of Wisconsin; Instructor, Illinois College and Penn Hall; Women's Club, Hershey, Penn.; Instructor in Physical Education, English, and Dramatics, M. V. C.

Faculty



Faculty

HAROLD SUTTON: B.F.A. University of Missouri; Instructor in Art, M. V. C.

CHARLOTTE HOWE: Secretary to the Treasurer and Instructor in Typing and Shorthand.

STELLA BEVERLY HICKS: Litt.D. Missouri Valley College; Mary Institute; Washington University; Librarian, M. V. C.

JOSEPH E. JOHNSTON: A.B., B.D. Missouri Valley College; Student Secretary, M. V. C.

EMMETT LEE PARSONS: Ph.B. Missouri Valley College; Treasurer, M. V. C.



*Dear Dennis: I hope
in one trip - I can get
your school record get
Sally M. Eyrard.*

Faculty



SALLIE MARGARET EVRARD: B.A. Missouri Valley College; Librarian, Marshall High School; Secretary to the President, M. V. C.

PAULINE ALLEN: R.N. Research Hospital, Kansas City, Mo.; Director of Health Service, M. V. C.

OTHERS NOT PICTURED

WILLIAM BENJAMIN HERT: F.C.M. Dana Institute of Music; Head of Violin Department, Dana Institute of Music; Instructor in Violin and Director of Orchestra, M. V. C.

WELLINGTON MAUPIN WESTBROOK: B.A. William Jewell College; B.S. in Ed. University of Missouri; M.A. Columbia University; Superintendent of Marshall Public Schools and Supervisor of Practice Teaching, M. V. C.

JAMES ALVIN LAUGHLIN: M.A., Curator of Museum, M. V. C.
MRS. I. N. EVRARD: Assistant Librarian, M. V. C.

JOHN CONDON: A.B. Missouri Valley College; Assistant to Treasurer, M. V. C.

DAVID F. MANNING: M.D., College Physician.
WILLIS R. BOOTH: B.A. Davidson College, North Carolina; B.D. Louisville Theological Seminary; Field Representative, M. V. C.



Student Senate



The Student Senate is the organization for student government at Missouri Valley. The body is headed by Student President Clarence Arndt. Nell Boatright is vice-president and Kay Browder, secretary. As treasurer, Harold Mallett succeeded Robert Van der Maaten of the first semester.

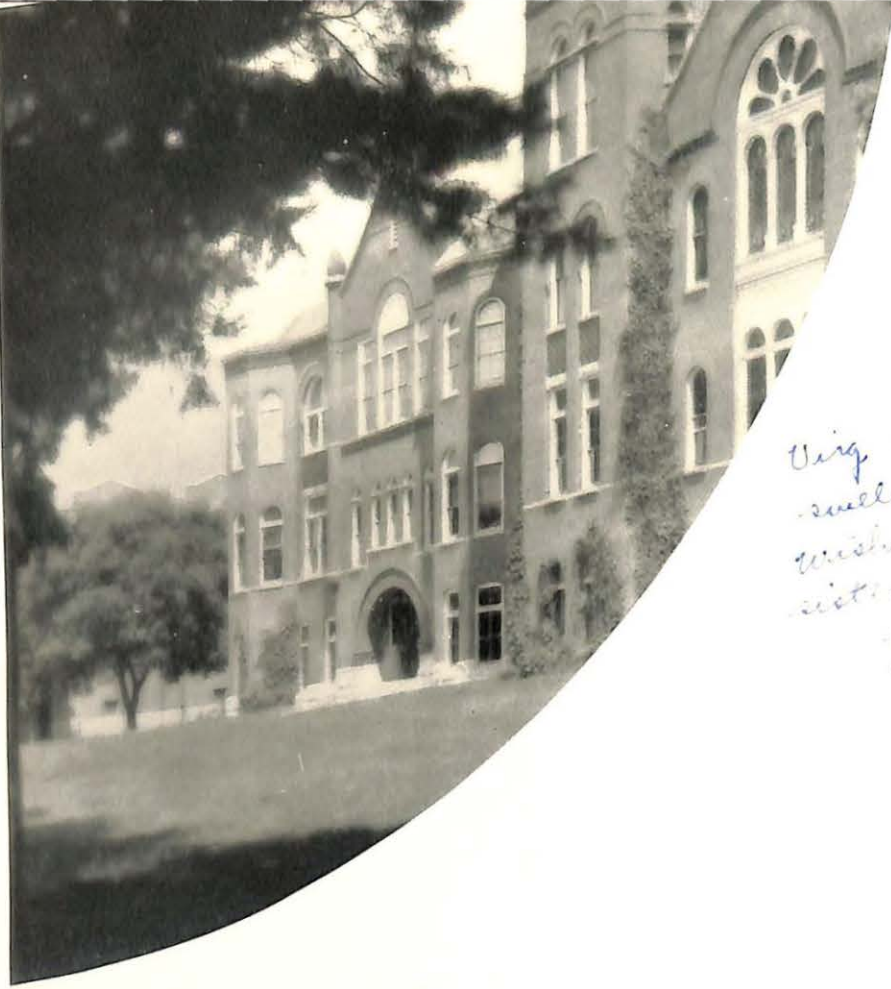
The senior class is represented by James Woodsmall, Jean Gordon, and Nell Boatright. The Juniors elected Betty Huston to serve with Robert Van der Maaten and Mary Vance the first semester, who were replaced by Harold Mallett and Sidney Sullivan for the second. The freshman senators are Norris Patterson and Carol Beale.

The most outstanding accomplishments of the Student Senate this year were the creation of the Student Senate Achievement Award to take place of the Bronze Plaque, and the sponsoring of an Intramural Basketball League.

At the close of this year when the presidency is turned over to Gilbert Holloway, the newly elected president, Clarence Arndt can step out of office feeling that he has done an excellent job of fulfilling his obligation to the student body. Not only has he steadfastly represented the students at all times, but he also has stood for several fine innovations and leaves the Senate with a substantial balance in the treasury.

Back row: Woodsmall, Gordon, Beale.
Middle row: Patterson, Browder, Boatright, Mallett.
Front row: Sullivan, Vance, Arndt, Huston, Van der Maaten.





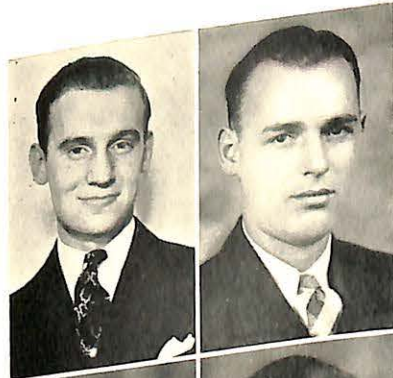
Very - we have had some
small hints in order to
wish into of more to the
sister of a fellow pro. and
you see Mr. Noble.

STUDENTS



JAMES CLARENCE WOODSMALL, A.B.
Memphis, Missouri

President
Delta Kappa 2, 3, 4; Y. M. C. A. 1, 2, 3, 4; Biology Club, Vice-President 4; Sabiduria Staff 4; College Choir 3, 4; Student Senate 4; Treasurer 4.



VIRGINIA THWEATT
Marshall, Missouri

Secretary-Treasurer
Pi Gamma Mu 3, 4; Y. W. C. A. 2, 3, 4; Secretary 4; Sabiduria Staff 2, 3, 4; "The Doll Shop" 1; College Choir 1, 2, 4; Honor Roll 2, 3, 4.



Dear Jim:
I'm depending on you to tell me next year whether Valley rushes the show. I'll be with you. We've had swell times together. Thanks for all the rides. I'll be seeing you.
V. Thweatt

CLARENCE WILLIAM ARNDT, A.B.
Marshall, Missouri

Delta Kappa 1, 2, 3, 4; President 3, 4; Treasurer 2; Secretary 2; Pi Gamma Mu 4; Business Manager Sabiduria 2; Basketball 1, 2; Track 1, 3; Student Senate 1, 2, 3, 4; Treasurer 3; President Student Body 4; Class President 2; "Who's Who Among American College Students" 3, 4.



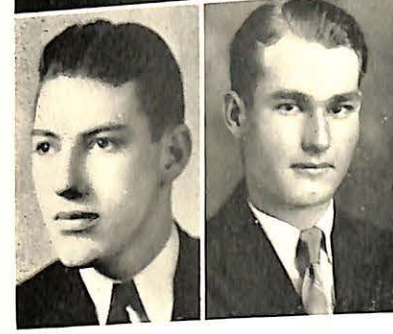
RUTH ELEANOR FERGUSON, A.B.
Roanoke, Missouri

Three year student; Sigma Phi 1, 2, 3; Secretary 2; Y. W. C. A. Cabinet 3; W. S. G. A. 2; Science Club 3; W. A. A. President 3; College Choir 1, 3; Honor Roll 1, 2.



A. B. JACKSON, A.B.
Jefferson City, Missouri

Y. M. C. A. 2, 3; Delta Staff 2, 3; Dramatic Arts Club 2, 3; Football Squad 2; Track Squad 2; Basketball Squad 2, 3; Baseball Squad 3; College Choir 2, 3; "The Doll's House" 3; Sabiduria Staff 3; Double Sextette 3; Jefferson City Junior College 1; Missouri University School of Journalism 4.



Seniors

NATHAN RIOTMAN, A.B.
2910 East 31st Street
Kansas City, Missouri

Vice-President
"V" Club 3, 4; Science Club 4; Football 3, 4; Basketball 3, 4, Captain 4; Baseball 3, 4.

NELL FRANCES BOATRIGHT, A.B.
Marshall, Missouri

Sigma Phi 2, 3, 4, Vice-President 4; Pi Gamma Mu 3, 4, President 4, Vice-President 3; Y. W. C. A. 1, 2, 4, Cabinet 4; Student Senate 3, 4, Vice-President 4; Vice-President Sophomore Class 2; May Queen 4; Honor Roll 1, 2, 3; "Who's Who in Colleges of America" 4.

JEAN GORDON, A.B.
5827 Charlotte
Kansas City, Missouri

Editor of the Delta 4; Valkyr 3, 4; Y. W. C. A. 4, Vice-President 4; President of Campbell 3; Campbell House Council 3; Student Senate 4; College Choir 3.

EDWARD ROSS JEFFERS
Kansas City, Missouri

CRANELEE JENKINS, A.B.
Beaman, Missouri

D. A. C. 2; Y. M. C. A. 1, 2, 4; "V" Club 2, 3, 4; President of Biology Club 4; Track 2, 3, 4; "Much Ado About Nothing" 1; Honor Roll 2.

Seniors

Dear Virginia, I have heard so many nice things about you that I feel as if I know you and you are a good Jones representative. Best of luck
ALMA LOU JONES, A.B.
Alma Independence, Missouri

Y. W. C. A. 1, 2, 3, 4; House Council, Campbell 2, Birkhead 3; Delta Staff 3; College Choir 1, 2, 3, 4.



ADELINE ELOISE KOLLER, B.S.Ed.
Denmark, Iowa

Sigma Phi 2, 3, 4, Vice-President 3; Y. W. C. A. 2; Secretary-Treasurer 2; W. A. A. 1, 2, 3, Vice-President 3; W. S. G. A. 1, 2, 3, 4, President 4; Birkhead House Council 1, 2; Secretary-Treasurer of Sophomore Class 2; Class Queen 4; College Choir 1, 2, 3, 4; Double Sextette 2, 3; A Cappella choir 4.



MARY JANE MARTIN, A.B.
Evanston, Illinois

Northwestern University 1, 2; Sigma Phi 3, 4, President 4; W. A. A. 3, 4; W. S. G. A. 3, 4, Vice-President 4; Campbell House Council 4; Sabiduria Staff 4; Class Queen 3; Queen Attendant 4; College Choir 3, 4.



FRANK EDWARD ROBERTSON, A.B.
Yates, Missouri

Sigma Nu 2, 3, 4, President 4; "V" Club 1, 2, 3, 4, President 4; Science Club 1; Young Hall House Council 4; Football 1, 2, 3, 4, Letters 2, 3, 4; Basketball 1, 2, 3, Letter 3; Track 1, 2, 3, 4, Letter 1, 2; Baseball 3, 4, Letter 3, 4, Captain 4; Student Senate, Treasurer 3; Vice-President of Junior Class 3.

LLOYD MOORE SCOTT, A.B.
Weston, Missouri

"V" Club 2, 3, 4; Delta Staff 2; Football 2, 3, 4, Letter 2, 3, 4; Track 3, 4.



MORRIS ALLEN TAPP, A.B.
Moberly, Missouri

Moberly Junior College 1, 2; Pi Gamma Mu 4; "V" Club 3, 4; Football 3, 4.

MARY AGNES YEAGER, A.B.
Marshall, Missouri

Three year student; Valkyr 1, 2, 3; Y. W. C. A. 1, 3, President 3; W. S. G. A. 3; Sabiduria Staff 1, 2, 3; Delta Staff 1; "The Doll's House" 2; "May Fete" 2; College Choir 3; Honor Roll 2; Drill Team 3.

History of the Senior Class

In 1932, eighty-four freshmen started their long trek to the hallowed ground of "Seniorship." William Petry, president, led them through the hectic first year. Thirty-five of the original group came back while fifteen students from other schools swelled the total to forty-eight the next year. Clarence Arndt was president.

The third year found the class with only twenty left. Frank Robertson was the chosen leader for the year. Eighteen students made up the Senior class of '36. The numbers had shrunk through the four years, but the few have struggled to keep intact the honor of the class. James Woodsmall was the senior president.

LATEN CARTER
Hollister
President

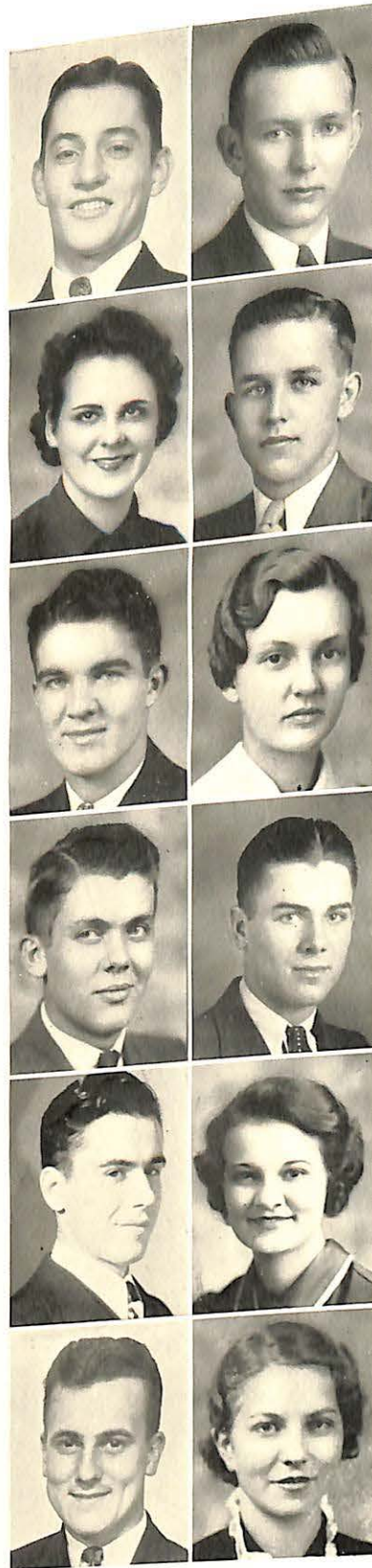
CLAY BELLE HOUSTON
Malta Bend
Secretary-Treasurer

PAUL BARNHILL
Marshall

CHARLES BAKER
Napton

ARTHUR BILY
1916 S. May Street
Chicago

EUGENE BUTLER
Jennings



*You are
John's girl
I wish I knew
better.*

ROBERT van der MAATEN
Springfield
Vice-President

SIDNEY SULLIVAN
Miami
Senator

*Dear Virginia:
I've enjoyed knowing
you and I think you
are one of the most
sincere girls in school
because to you - Mary*

MARY ELIZABETH CARDY
King City

MARSHALL COFFMAN
Marshall

LOIS COLLINS
Chillicothe

ALICE DEIS
Gilliam

Juniors

RUTH EISENSTEIN
Marshall

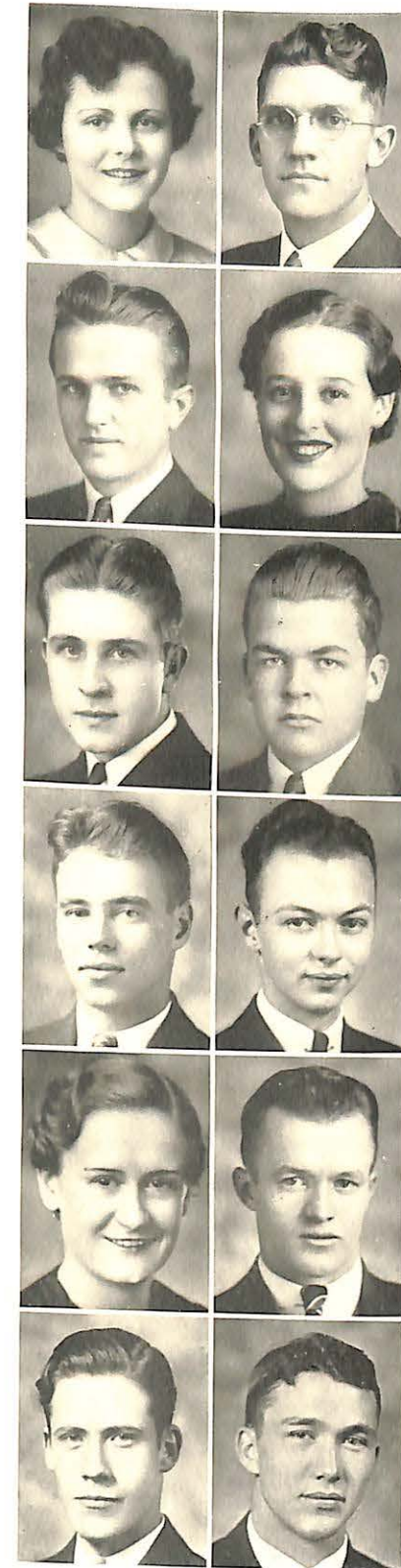
WILLIARD ETHRIDGE
3820 Hyde Park
Kansas City

WILLIAM FERGUSON
Roanoke

PHILLIP GOODWIN
Alma

JEAN GUTHRIE
Macon

LOUIS HANSEN
6170 Sni-A-Bar Road
Kansas City



ARTHUR HINNAH
Gilliam

MARY ELIZABETH HUSTON
Dequater

WILLIAM IRVINE
Marshall

*Here's to one of owners
of the Eastwood bus.
Luck
Bill
CH*

LEWIS JOHNSTON
Mexico

HOMER LEECH
Higginsville

JAMES LONG
Malta Bend

LEWIS McADOW
Lexington

RACHEL McLEOD
Marshall

ANN MURRAY
125 E. 72nd St.
Kansas City



DOROTHY ROBINSON
Marshall

HARRIET SHAVER
Marshall

MARY VANCE
Sedalia

*Virginia,
even after S.S., it
takes a college class
or two to get us
acquainted. Best wishes.
Harriet*

Juniors

History of the Junior Class

Something over a hundred bewildered freshmen arrived on the Valley campus in the fall of 1935. When they had finally gotten their bearings they began their college careers by defeating the sophomores badly on an annual Spree Day. For leaders the group chose David Dexter, president; Pat Kidd, vice-president; and Martha Traugher, secretary-treasurer. Jean Christie and Paul Barnhill represented the class in the Senate. Members of the class placed in nearly every school activity. Basketball, track and football all found the freshmen doing their share. Other activities also received their quota.

Having successfully passed through the initial year, approximately seventy sophomores returned. Paul Libby was elected to steer the class through this second year. Meritt Purpus was vice-president. The

class began its second year, as it had its first, by taking the events on Spree Day. Once again the class formed the backbone of athletics. Helen Hamilton, sophomore, edited the Delta. David Dexter was associate editor.

When the class assembled to take up the work of the third year only about 40 remained to carry on. Laten Carter assumed the presidency, with Robert van der Maaten as vice-president. Clay Belle Houston was elected secretary-treasurer and was later succeeded by William Ferguson. The notables of this year's juniors included Betty Huston, Harvest Queen; Gilbert Holloway, captain of the football team and later chosen student president for 1936-37. Again all departments saw members of the class participating, and again it was principally athletics that benefitted the most.

Sophomores

MARY ELIZABETH WESTON
Neosho
Vice-President

JAY BROWN
Odessa
Senator

WILLIS BEECHER
Clyde, N. Y.

GEORGE BROWN
Danville, Ill.

HELEN JANE BURRUSS
Miami

LEE CARDY
King City



LUCILLE SCHROEDER
Blackburn
Secretary-Treasurer

CARYLL CLINE
Appleton City

HOMER COOK
Edina

JACK COX
Miami

LUCILLE CROWEY
Marshall

CHARLES EWELL
Marshall

*Virginia,
you have been of
much help to me with the
"bus" problem. I'm
good. I've really enjoyed
knowing you.
Love,
Jack Cox*

*Virginia,
I have enjoyed
knowing you for
2 years. It's a
pleasure to see
you in person.
Love,
Lee Cardy*

Dear Virginia
 you so sweet. I'm mighty
 proud of you. I hope you
 will be very successful in
 your studies. I hope you
 will be very happy.

ELAINE GRIFFIS
 Nelson



GWEN GORDON
 Eldon



My dear Gwen
 I still love you
 and I hope you
 will be very
 successful in
 your studies.
 I hope you
 will be very
 happy.

RUTH HAINS
 Marshall



Dear Virginia
 I don't know
 what I would have done
 without you this year
 in Academics. You've
 really helped me
 to get on my feet.
 I hope you'll
 be very successful
 in your studies.
 I hope you'll
 be very happy.

HUDNALL HARVEY
 Marshall



RAYMOND HAYOB
 Marshall



JOHN HIGGINS
 Imbo



Sophomores

JOHN HOLIC
 1917 South Racine Ave.
 Chicago



JOHN PAUL JONES
 Marshall



Dear Virginia
 I don't know
 what I would have done
 without you this year
 in Academics. You've
 really helped me
 to get on my feet.
 I hope you'll
 be very successful
 in your studies.
 I hope you'll
 be very happy.

VIRGINIA JONES
 Marshall



HOMER KEITH
 Aurora



ANNA MAY KREGEL
 3023 Meb.
 Kansas City



FRANKLIN MITCHELL
 Aberdeen, S. Dak.



Sophomores

MAXINE REID
 Marshall



MELBA SPARKS
 Marshall



This is a terrible
 picture but
 try to remember
 me as I now
 am.

WALTER STANWOOD
 Lawrence, Kans.



KENNETH WARREN
 Marshall



DOROTHY WALTON
 Marshall



F. M. WILSON
 Marshall



NELLE WALLACE WILKENING
 Odessa



The History of the Sophomore Class

The sophomore class climbs another
 rung higher on the ladder of success,
 and this year finds them not playing the
 role of the freshman dunce, but a wise
 group of will-be intellectuals.

Seventy-three wanderers composed the
 starting brigade, but some have dropped
 by the wayside, some have gone to newer
 fields, and some have failed to advance
 with their fellow classmen led by Bob
 Haas as president both years. Those whose

perseverance led then on to seek the ven-
 tures of the fields beyond have no regret,
 for their escapade has been a joyous one.

Some have taken time for extra work,
 and have well established themselves in
 the outer realms. Guthrey, Stillwell, and
 Bearce were recognized on the grid, court,
 and track. Others gained recognition in
 music, art, debate, and drama; their rise
 has been slow but steady—may their suc-
 cess be everlasting.

Best wishes to a very
 nice "Leslie" our
 philosophy of life founded
 in the old country store
 is still going strong.
 Bob! Wood

WILLIAM KIRBY
Slater
President

O. H. WILLIAMS
Brookfield
Secretary-Treasurer

EVALYN ANDERSON
Mexico

So really sweet girl - I'll always remember you from our Kansas City trip. Andy

DORIS BALTHIS
Marshall

Dear Virginia, I'm wishing you luck. Remembered you good times with Doris

ROBERTA BENNINGTON
Slater

MAY AUGUSTA BILLMAN
Slater

ESTHER BURNETT
Laclede



Freshmen

DOROTHY ARMSTRONG
5063 Chippewa
St. Louis
Vice-President

Virginia I hope you will add my name to the list of Ec. History class against me. Miss do hit of anything to you. Bush

DONALD BUSH
Ridgeway

CATHERINE CAMPBELL
Springfield

I hope you say I'll work for a fellow student in a ranch.

JOSEPH CARTER
Marshall

LULU BELLE CROCKETT
Marshall
Best wishes to one of the sweetest girls I ever knew. Lulu

SUE DAVIS
Macon

Dear Virginia - I hope you will add my name to the list of Ec. History class against me. Miss do hit of anything to you. Bush

RUTH DICKERSON
Armstrong

Freshmen

WALTER DOWNING
Leeton

MARY FRANCES DRAKE
Marshall

RALPH DUNCAN
Marshall

GENEVIEVE EVANS
Carthage

CHARLES FIELDS
Osceola

ELEANOR FIELDS
Osceola

CLARENCE FOWLER
Nevada



RUBY FRAZIER
Cougill

ROLLIN GODFREY
Sedalia

RUTH GRINSTEAD
Houstonia

Dear Virginia - I've had fun with you in Psychology class. It is fun to all study to a good customer. Ruth

REBEKAHMARY HAIL
708 N. Bever
Wooster, Ohio

GEORGE HANSFORD
Edwards

LAVENIA HEAD
Marshall

JEWELL HELM
Odessa

GLADE HELZER
Barnard

JOSEPH HENLEY
Marshall

LEO HIRTL
Sedalia

LUCILLE HOFFARTH
Mountain Grove

KATHLEEN HOLTZEN
Independence

NORA INGRAM
Wellsville

REINHOLD JENSEN
Lexington



Freshmen

JOHN ROBB
Longwood

BEULAH JONES
Marshall

LUCY MAE JONES
Hale

MARTHA JONES
Carthage

BEN KLEIN
Sedalia

ERNEST KUDES
Corder

LAWRENCE LANE
Marceline

*Hello Cousin Ray,
Here's my wish and happiness
to you who are kind and from
your family relation -
Lucille*

*Dear Virginia,
our cooperation
in Soph. Eng. was
worth while,
I guess
Luck
Lawrence Lane*

Freshmen

BERNARD LASAUCE
308 Crescent St.
Brooklyn, N. Y.

LEVAH LASH
Ottawa, Kans.

VIRGIL LEIMKUEHLER
Napton

JOSEPHINE MALLMAN
Napton

JACK McCHESNEY
Marshall

NORMAN MERTGEN
Florence

MURIEL MILLSAPS
Marshall

*I guess that we shall
be going together with
her.*



JANET MITCHELL
Marshall

MARJORIE MOORE
Independence

DOROTHY MORRISON
Cougill

BYRON MUELLER
Sweet Springs

HELEN NICHOLS
Miami

COYLIE POEHLMAN
Macon

HELEN RICHARDSON
Nelson

*Dear Virginia,
I'll always remember
with deep respect in memory
the 2nd. period in morning
all those class days.
a freshman friend
Helen Nichols*

*Dear Virginia:
Remember those days in
Econ. History. Lots of luck to
you always.
Coylie.*

*I guess I'll have to
sign my name twice
- you will be sure
it's me with the long
hair.
Helen Richardson*

LORETTA RONCHETTO
Bevier

JOAN STEWART
2005 E. 36 St.
Kansas City

JAMES SUTTON
Marshall

WILMA THOMAS
Marshall



Freshmen

MARTIN TORBITZKY
Dittmer

ELDON WARD
Carrollton

JOSEPH WESTON
Neosho

FAUNICE WILSON
King City

History of the Freshman Class

The class of 1939 entered the portals of Missouri Valley College on September 11, 1935. They were initiated into the rules and regulations of the school by the faculty, and less gently, by their would-be superiors, the sophomores, juniors and seniors. They elected as their leaders William Kirby, president; Dorothy Armstrong, vice-president; O. H. Williams, secretary; and representatives in the Student Senate, Carol Beale and Norris Patterson.

The freshmen have contributed much to the college in all its activities. Some of them are: there are seven freshmen on

the Delta staff; three on the Sabiduria staff; four freshmen lettered in football; two in basketball; one-third of the Mixed Chorus which went on trips in the spring were freshmen; and in scholarship freshmen women have gone up two points as compared with last year, and the men four points.

The class is a large one, starting out with one hundred and fifteen members, and though diminished somewhat by some having fallen by the wayside by the second semester, most have followed the straight and narrow path and the year as a whole has been a successful one.

Students Who Are Not Pictured

SENIORS:

Freeman, Richard, Carrollton
Johnson, Mrs. Marcia, Marshall.

JUNIORS:

Allen, Pauline, Kansas City, 1008 E
26th St.

Bennington, Mrs. Roberta, Slater.
Emmerson, Harold, Marshall.
Holloway, Gilbert, Harrisonville.
Igo, Vincent, Beaman.

Mallett, Harold, Jennings.
McDowell, Virgil, Brookfield.
Moore, Opal, Armstrong.

Place, Robert, Gallatin.
Pugh, Jesse, St. Joseph.
Purpus, Merritt, Wichita, Kan.
Schutte, Elmer, Corder.

Sebastin, Eugene, Kansas City, 3131
Euclid.

SOPHOMORES:

Becker, Howard, Alma.
Browder, Kathryn, St. Louis, 5906 Aren-
des Dr.
Carnahan, Melvin, Kansas City, 1216
Armour Blvd.

Francis, Cecil, Alma.
Guthrey, Kile, Marshall.
Haas, Robert, Neosho.
Hull, Marian, Washington.
McCorkle, Lee, Marshall.

Renno, Charles, Nelson.
Stephens, Paul, Sedalia.
Sullens, Walter, Miami.
West, Mary Anna, Annapolis.
Wickham, Faber, East St. Louis, Ill.,
574 N. 74th.

Wood, Isabel, Marshall.

FRESHMEN:

Agniel, Lucien, Sedalia.
Barnhill, Robert, Marshall.
Beale, Carroll, Aurora.
Beasley, Carleton, Leeton.
Boatright, Edith, Marshall.
Bothwell, Cloyd, Sedalia.
Branscomb, Ralph, Shelbina.
Buntin, James, Napton.
Buntin, Roy, Bogard.

Burroughs, Robert, Brandsville.
Cayot, William, Kansas City, 2841 Tracy.

Crank, Robert, Marshall.
Donelson, Russell, Gallatin.
Emmerson, George, Marshall.

Feedback, Margaret, LaTour.
Gaba, Woodrow, Kansas City, 1308
Forest.

Gann, Howard, Odessa.
Garrard, Mrs. Ruby, Marshall.

Green, Garnett W., Excelsior Springs.
Gross, Melrose, Marshall.
Hall, Horace, Marshall.

Hamilton, William, Sedalia.
Harper, Cecil, Bogard.
Henderson, Francis, Louisiana.
Herndon, Robert, Marshall.

Hodge, Joseph, Kansas City, 5111 Wa-
bash.

Hupp, Wilbur, jr., Marshall.
Johnston, Joseph, jr., St. Joseph.
Jones, Buster, Pleasant Hill.

Jones, John Wesley, Pleasant Hill.
Justice, Ivan, Neosho.
Kennedy, Walter, jr., Sedalia.
McKenzie, Edwin, Brookfield.

McNown, John, Marceline.
Nutting, Dana, Los Angeles, Cal.
Page, Dale, Slater.

Pardee, Mary Frances, Kansas City, 4118
Mercier.
Patterson, Norris, Odessa.

Robb, John, Longwood.
Russell, Joseph, Garland, Texas.
Schulze, Louis, Vandalia.

Smith, James, Marshall.
Tarver, Helen, Gillette, Wyo.
Thomas, Wilma, Marshall.

Titterington, James T., Marshall.
Turrentine, James, Elizabethton, Tenn.
Ullery, Lee Roy, Harrisonville.

ACADEMIC SPECIALS:
Fisher, William, Marshall.
Guthrey, John, Marshall.

Malcolm, Marjorie, Marshall.
Harris, Roy, Marshall.

*I will never forget the
Rest Room Jan.
Ruby Gamard*



ACTIVITIES



Sabiduria



RACHEL McLEOD
Editor



PAUL BARNHILL
Business Manager

The first Missouri Valley annual was published in 1907, and given the name "Sabiduria," a Spanish word meaning "a collection of knowledge." Originally the book was published by classes, then by the "Unit Club," thence by editors and business managers elected by the student body at large until 1935, when, in order to insure efficient management, the Student Senate took charge of the election of the two main officers.

The staff of the 1936 Sabiduria included:

Business Manager	- - - - -	PAUL BARNHILL
Editor	- - - - -	RACHEL McLEOD
Assistant Editor	- - - - -	JEAN GUTHERIE
Senior Class Editor	- - - - -	MARY YEAGER
Junior Class Editor	- - - - -	LEWIS JOHNSON
Sophomore Class Editor	- - - - -	LUCILLE SCHROEDER
Freshman Class Editors	- - - - -	MARTHA JONES - JOE CARTER
Sports Editor	- - - - -	WILLARD ETHRIDGE
Music Editor	- - - - -	LEWIS HANSEN
Humor Editor	- - - - -	LEWIS McADOW
Calendar	- - - - -	REBECCAMARY HAIL
Literary Editors	- - - - -	VIRGINIA THWEATT - VIRGINIA JONES
Photographer	- - - - -	JOHN HOLIC
Snapshot Editor	- - - - -	PAUL JONES
Assistant Snapshot Editors	- - - - -	MARY JANE MARTIN - JAMES WOODSMALL

Back Row: Virginia Jones, John Holic, Lewis Hansen, Willard Ethridge, Lewis Johnson, Lewis McAdow, Mary Yeager.
Front Row: Lucille Schroeder, Jean Guthrie, Martha Jones, Rebeccamary Hail, Mary Jane Martin, Virginia Thweatt.



Delta

The Delta gains its name from the three literary societies, "Bairdean," "Pearsonian," and "Houxonian," on the campus at the time the Delta was initiated. Later, as these societies gave way to social clubs, and students took interest in journalism, radical changes in the Delta came about, but it still maintained its old name.

Before 1927, the Delta was a magazine. In 1928, it became bi-weekly and assumed the aspects of a newspaper—printed on newsprint paper, having five columns to a page. Since then, it has increased to an eight-column paper. It has held membership since 1928 in the Missouri College Newspaper Association, being honored by a number of offices in that organization (president in one instance, secretary at present), because it has become an outstanding paper. It placed first among Missouri College newspapers one year, and second last year.

Dr. John M. Raines was sponsor of the Delta this year. Jean Gordon, senior, Kansas City, Mo., was editor, Phil Goodwin, junior, Alma, Mo., business manager, and Lewis Johnston, junior, Mexico, Mo., associate editor. Sports were reported by Joe Weston and James Turrentine, society by Kathleen Holtzen and Nelle W. Wilkening. Features were written by Lucille Hoffarth and John Higgins, and news stories by Joe Johnston, Homer Keith, Rebeccamary Hail, Muriel Millsaps, Jean Guthrie and Leva Lash. Columnists were Joe Johnston, Isabel Wood and Robert Haas. Many other students contributed to the Delta.



JEAN GORDON
Editor



PHIL GOODWIN
Business Manager

Top Row: Joe Johnston, Joe Weston.
Middle Row: Rebeccamary Hail, Lucille Hoffarth, Nell W. Wilkening.
Bottom Row: John Higgins, Lewis Johnston, Homer Keith.



Music Department

VESPER CHOIR

The Vesper Choir, directed by Dean Claude L. Fichthorn, has again this year maintained a high level of performance. Since the completion of the remodeling of Stewart Chapel and the installation of

the new Kimball pipe organ in November, the Choir has held monthly services consisting of the highest type of sacred music. Miss Opal L. Moore provided very able accompaniment on the organ.

MIXED A CAPPELLA CHORUS

The mixed a cappella chorus consisted this year of a selected group of thirty-five voices. Dean Fichthorn trained the singers in the important initial stages, turning the direction over to Louis Hansen the second semester. From this larger group a shifting group of fifteen was selected, making many trips scattered over a period of several months. Over sixty-five programs were given in high schools and in churches throughout Missouri.

High schools visited were: Slater, Glasgow, Gilliam, Cameron, Excelsior Springs, Richmond, Lexington, Malta Bend, Grand Pass, Carrollton, Norborne, Hardin, Waverly, Marceline, Keytesville, Salisbury, Clifton Hill, Huntsville, Macon, Shelbyna, Paris, Mexico, Hamilton, Chillicothe, Milan, Browning, Rich Hill, Carthage, Joplin, Miami, Okla., Webb City, Golden City, Lamar, Nevada, Eldorado Springs, Osceola. The entire group visited

Fifth Row: Earnest Kuddes, George L. Schulze, Homer Keith, George Brown, Paul Jones, Martin Torbitzky, Franklin Mitchell, Kent Haley.
Fourth Row: Sidney Sullivan, Faber Wickham, Joe Russell, James Long, Reinhold Jensen, Lewis Hansen, Harold Emmerson.
Third Row: Esther Burnett, Joan Stewart, Dorothy Armstrong, Dorothy Robinson, F. Henderson, Lee McCorkle, Carroll Beale, Charles Baker, Walter Downing, Barnard LaSauce, Mary Yeager, Rachel McLeod.
Second Row: Eleanor Fields, Alice Deis, Ruth Grinstead, Ruth Ferguson, Elizabeth Cardy, Charles Fields, Laten Carter, Arthur Bily, Anna Mae Kregel, Lois Collins, Ruth Eisenstein, Janet Mitchell, Pauline Allen.
First Row: May Augusta Billman, Rebekah Mary Hail, Mary Jane Martin, Helen Jane Burruss, Mary Weston, Melba Sparks, Prof. Fichthorn, Miss Opal Moore, Maxine Reid, Genevieve Evans, Adeline Koller, Jean Guthrie, Nelle W. Wilkening, Lucille Schroeder, Pat Pardee.



Marsall High School, Sedalia, Odessa, Higgsville, and East, Westport, and Central High Schools in Kansas City, also singing over WDAF while there. Several other high schools were also visited. Church programs were given at Chillicothe, Gallatin, Brookfield, Macon, Westport Presbyterian Church in Kansas City, Aurora, Joplin, Sarcoxie, Neosho, and

Greenfield.

The average program consisted of a cappella numbers and solos. The soloists were: Sopranos—Adeline Koller and Genevieve Evans; Contralto—Helen Jane Burruss; Tenor—Laten Carter; Piano—Lois Collins (also accompanist); Violin—Franklin Mitchell; Trumpet—Louis Hansen.

BAND

The band under the leadership of Louis Hansen, proved very efficient, enjoying a very active season. It played for all home football and basketball games, and made two trips, one to Kansas City for the football game with Rockhurst, the other to Lexington. Frequent pep assemblies were also given. The membership in-

cluded Downing, C. Fields, E. Fields, Godfrey, Jensen, Burnett, Grinstead, Ward, Wilson, M. Cardy, Bush, Lash, Mitchell, Brown, Beale, L. M. Jones, Collins, Deis, and Cook. The Marshall town band also provided assisting artists for the games.

ORCHESTRA

The orchestra was under the direction of Mr. William B. Hert, instructor of violin. Music of a high type was used, and ensemble work was also engaged in. Several assembly programs were given during

the year. The college membership included Burnett, Ethridge, Eisenstein, Mitchell, M. Cardy, Jensen, Grinstead, Godfrey, Beale, C. Fields, Collins, Kregel, and Hansen.

Back Row: Sidney Sullivan, George Schulze, Lawrence Lane, Reinhold Jensen, Rollin Godfrey, James Long, Barnard LaSauce, Charles Baker, Arthur Bily, Laten Carter.
Middle Row: Faber Wickham, Franklin Mitchell, May Augusta Billman, Genevieve Evans, Nelle W. Wilkening, Helen Tarver, Louis Hansen, Lois Collins, Charles Fields, Francis Henderson, Carroll Beale, Walter Downing.
Front Row: Alice Deis, Dorothy Armstrong, Jean Guthrie, Beulah Jones, Helen Jane Burruss, Melba Sparks, Maxine Reid, Adeline Koller, Betty Huston, Eleanor Fields, Lucille Schroeder.



D. A. C.

The Dramatic Arts Club is organized on the campus to provide an outlet for student interest in the acting and producing of plays, and to attempt to better the dramatic standard on the campus. Any student may secure membership in the club by a successful tryout and a grade average of twelve hours of C.

The organization was sponsored this year by Miss Louise DeGaris and Dr. John M. Raines, two of the new faculty members. The officers for the year were:

President - JEAN SHARP GUTHERIE
 Vice-President - FABER WICKHAM
 Secretary - WILLIAM FERGUSON
 Business Manager - LEE CARDY
 Production Manager - WILLIAM CAYOT

The privilege of using the renovated Stewart Chapel stage with its greater space and better lighting and background has proved quite an advantage this year in the production of plays by the D. A. C., while formerly only the inadequately

furnished Little Theater was available. On December 6, the club, under the direction of the two sponsors, presented "A Doll's House," by Henrik Ibsen. The cast included:

Nora - - - - JEAN GUTHERIE
 Torvald - - - WILLIAM FERGUSON
 Dr. Rank - - - WILLIAM CAYOT
 Christina - - - MARION HULL
 Krogstadt - - - LEE CARDY
 Anna - - - - BEULAH JONES
 Ellen - - - - ANNA MAY KREGAL

Still later in the year the organization aided in the production of a play, "Ba Thene," sponsored by the Y. M. C. A. and Y. W. C. A. and presented April 10. The Dramatic Arts Club also helped greatly in the successful presentation of the annual May Fete entertainment, this year entitled "A Spring Fantasy in Toy-land," and given out of doors on the campus on May 8.

Cast of "A Doll's House," left to right: Jean Sharp Guthrie, Beulah Jones, William Ferguson, William Cayot, Lee Cardy, Marion Hull, Anna May Kregal.



W. S. G. A.

The Women's Student Government Association is designed for the purpose its name implies—government of the college women by themselves. The Organization is headed by the dean of women, sponsor, and a council consisting of four officers, the presidents of the women's dormitories, and a representative of the off-campus women. The members of the council for the past year included:

President - - - - MARY VANCE
 Replaced by ADELINE KOLLER
 Vice-President - MARY JANE MARTIN
 Secretary - - - - LOIS COLLINS
 Treasurer - - - - KATHRYN BROWDER
 President Birkhead Dormitory - -

- - - - - JEAN GUTHERIE
 Replaced by ANN MURRAY
 President Campbell Dormitory - -
 - - - - MARY JANE MARTIN
 Rep. Off-Campus Women - - -
 - - - - MARY YEAGER

Under the main council comes the governmental organization in each of the

women's dorms which consisted of the following set-up:

Campbell Dormitory:
 President - - - MARY JANE MARTIN
 Secretary-Treasurer - BETTY HUSTON
 Proctors - - - - -

HELEN JANE BURRUSS, MARY
 ELIZABETH CARDY, MARION
 HULL, LUCILLE SCHROEDER

Birkhead Dormitory:
 President - - - - -
 JEAN GUTHERIE - ANN MURRAY
 Secretary-Treasurer - PAULINE ALLEN
 Proctors - - - - -

ELAINE GRIFFISS, LUCY MAE
 JONES, DOROTHY ARMSTRONG

Aside from managing the regular problems of government, this year the W. S. G. A. sponsored a tea and lecture by Miss Joanne Taylor of Taylor's Dry Goods Company of Kansas City in connection with a series of programs dealing with women's vocations, and also inaugurated a new plan for a pep club for next year.

Back Row: Lois Collins, Mary Yeager.
 Front Row: Ann Murray, Adeline Koller, Mary Jane Martin, Kathryn Browder.



V Club

The V Club is the athletic honor group at Missouri Valley, and is made up of the lettermen of the four major sports: football, basketball, track, and baseball. It was founded in 1922 with the purpose of maintaining the high athletic ideals and principles of the college and the Missouri College Athletic Union. It is sponsored by Coach Henri R. Godfriaux who has filled that office since the organization of the club.

This year's addition to the club were four freshmen who gained their letters in football. They were William Hamilton and Buddy Bothwell, both of Sedalia, Woodrow Gaba of Kansas City, and Edwin McKenzie of Brookfield. Later in the year men who won letters in other sports also were added to the membership.

The V Club this year continued its former policy of promoting athletic in-

terest in high schools by sponsoring two tournaments. The first was a basketball tournament held in February, at which time the club was host to a large group of high schools. The second was held in April and was a qualifying meet for the Missouri State High School meet.

The officers for this past year were:
 President - - - FRANK ROBERTSON
 Vice-President - - GENE SEBASTIAN
 Secretary-Treasurer - - - -

- - - - GILBERT HOLLOWAY

This spring the following officers were elected for 1936-37:

President - - - - GENE SEBASTIAN
 Vice-President - - - HOMER LEECH
 Secretary-Treasurer - - - -

- - - - GILBERT HOLLOWAY

It is the V Club's boast that it has the best financial standing of any campus organization.

Back Row: Gaba, Freeman, Robertson, Carnahan, Sullivan.
 Middle Row: Leech, Purpus, Scott, Hamilton, Reitman.
 Front Row: Tapp, Sebastian, Place, Long, Holloway, Bothwell.



(42)

Chi Alpha

Chi Alpha is a campus fraternity for students of the ministry and any others interested in Christian service.

The motto, "Christ First," indicates the purpose of the organization. It is the aim of the group to stimulate more religious feeling on the campus and to give the members a thorough training in Christian activities. Through leadership in the local churches and active student ministry in surrounding communities the members come into close acquaintance with the requirements for Christian workers.

Most of the members are preparing for ministerial work; however, any student interested in full-time Christian service is eligible for membership.

Chi Alpha was organized on the Missouri Valley Campus in 1929. There were nine charter members. In the spring of 1931 the Beta chapter was organized at Central College in Fayette. Two years later the mother group installed a Gamma chapter in Kansas University in Lawrence, Kansas. In 1935 the Delta chapter was formed in Westminster College at Fulton.

In November, 1935, the three chap-

ters—Alpha, Beta, and Delta, met at Central to form a national organization. The grand officers were selected at this meeting. Louis McAdow, former Chaplain of the Valley group, was chosen as Grand Chaplain of the Grand Assembly. Charles Caldwell, from Central, was selected as Grand Deacon; Frank Marble, also from Central, became the Grand Scribe; while Joe Ledford from the Delta chapter at Westminster was chosen Grand Steward. The main purposes of the organization are to promote a much stronger feeling of harmony between the college chapters and also extend Chi Alpha into other colleges.

Since the first organization in 1929 Missouri Valley has had forty-five Alpha members most of whom are either active ministers at present or are in higher preparation for the service. They have formed a center for many of the activities of the campus Christian associations.

The success of the local chapter as well as that of the national organization is influenced greatly by the work of the sponsor, Dr. W. W. Malcolm, head of the department of religion at Missouri Valley.

Back Row: Messrs. Holie, Henderson, Keith, Johnson, Butler, Wickham.
 Front Row: Messrs. Carter, Jensen, McAdow, Malcolm, Mallett, Bily.



(43)

Dear Friggin' ^{many} ^{the} ^{time} ^{at} ^{noon} ^{day} ^{when} ^{you} ^{are} ^{shivering} ^{above} ^{up} ^{about} ^{the} ^{valley} ^{is} ^{got} ^{out} ^{then} ^{rode} ^{into} ^{town} ^{with} ^{you} ^{dear} ^{dad} ^{Well} ^{it's} ^{just} ^{another} ^{incident} ⁱⁿ ^{dear} ^{old} ^{Valley} ^{to} ^{make} ^{it} ^{all} ^{the} ^{more} ^{dear} ^{Best} ^{of} ^{luck} ^{to} ^{you} ^{always} ^{Harold} ^{M.} ^{Mallett}.

Y. M. C. A.

The Y. M. C. A. is the only campus organization open to all of the college men for Christian activities. It is the purpose of the "Y" to furnish a varied program which will meet the needs of all of the men who are at all interested in any form of Christian relationship.

Under the leadership of Laten Carter, president, the "Y" has made several valuable contributions to the college year. Aided by Arthur Bily, vice-president, Louis McAdow, secretary, and James Woodsmall, treasurer, the president and other cabinet members have provided a varied and worthwhile program.

During the past year the Y. M. has cooperated with the Y. W. in presenting a number of outstanding programs. It has been an aim of both organizations to work in as much harmony with each other as could profitably be expected. Both organizations working together have been able to present a more well-rounded program than either could have done alone.

The able assistance of the sponsor of the Y. M., Dr. P. L. Johnson, has been

to a great extent responsible for the success of the organization.

The purpose in any Y. M. C. A. program is to offer a well rounded program including social, physical, mental, and spiritual development. This purpose has held true in the program of the Valley Y. M.

Several purely religious programs have been presented, including talks by some of the city ministers and other local as well as out of town speakers. The Y. M. cooperated extensively in the presentation of Spiritual Emphasis Week. During the whole year the Y. M. and Y. W. have sponsored Sunday afternoon Vesper services. The two organizations joined to present Christmas and Easter chapel programs also.

An International Relations Tour featuring well known and experienced speakers was another project of the groups. In April the two associations presented "Ba Thane," a missionary play.

These activities, with several others, have furnished a very complete calendar in Y. M. C. A. work for the year.

CABINET MEMBERS

Back Row: Woodsmall, Cook, Dr. Johnson, Wickham, Mallett.
Front Row: Kirby, Bily, Carter, McAdow, Brown, Holte.



(44)

Y. W. C. A.

The Y. W. C. A., sponsored by Miss Madeline Ashton, opened its activities for the 1935-1936 school year with the annual party for the incoming Freshmen, cooperating with the Y. M. C. A. in the presentation of this event. The party, held in the Morrison gymnasium, served as an ice-breaker for the new Valley students.

The following few weeks were taken up with the big-little sister movement which is sponsored annually by the Y. W. At Thanksgiving, the two "Y's" made up a number of baskets to be distributed among the poor of Marshall. Religious Emphasis Week was held the week after the second semester began.

With the opening of the new semester the Y. W. and Y. M. agreed to try working together for the rest of the year, with the possible unification of the two organizations if the project should prove successful. A series of programs, held every Thursday evening, in which foreign countries were discussed by outside speakers, was inaugurated. The series was opened by the Gordons, a young couple who had just returned from Mexico and

who presented an interesting program on this country to the evening meeting. The following week, Mr. Joe Porter of Marshall discussed his trip to Europe, touching upon the various countries which he visited. Mr. Henry Hamilton of Marshall spoke the third week on his visit and work in Russia. The concluding two talks were given in the latter part of April and the first of May by Mrs. V. V. Huff, who spoke on England, and Miss Madeline Ashton, who presented France. Much interest in these meetings was evidenced by the students.

The Thursday morning meetings have been held under the joint sponsorship of the two "Y's" also, since the new system has been in practice. A special Easter service was held in the Stewart chapel the Thursday morning before Easter. Sunday afternoons the Vesper services have been held in Young Hall, the responsibility for them alternating between the Y. M. and the Y. W.

The officers for 1936 were Mary Yeager, president; Jean Gordon, vice-president; Virginia Thweatt, secretary-treasurer.

CABINET MEMBERS

Back Row: Misses Yeager, Guthrie, Griffiths, Ferguson.
Front Row: Misses Thweatt, Boatright, Gordon, Murray.



(45)

Pi Kappa Delta

Pi Kappa Delta was victorious in over fifty per cent of its decision debates this year, and, in addition, won the Moberly Junior College Tournament.

The Chapter sponsored an invitation debate tournament for high schools on February 8. A successful experiment was a demonstration debate with Central College before the Slater High School.

On March 6, the Missouri College Oratorical Association held its annual contest here with Missouri Valley as one of the contestants and as host of the group.

The fraternity maintained its high standards, outside of forensics as well as in them, by ranking highest in scholastic average among all campus organizations for the second consecutive year.

The debate schedule was as follows:
December 13—Tournament at Moberly.
February 7—William Jewell at Liberty.
February 11—Wentworth at Marshall.
February 18—Central at Fayette.
February 21, 22—Missouri College Union Tournament at Westminster, Fulton.

March 2—Wentworth at Lexington.
March 7—Culver-Stockton at Marshall.
March 7—Kemper at Marshall.

Back Row: Prof. Pasek, McAdow, Harvey.
Front Row: Ferguson, Vance, Ethridge.



(46)

March 9—Kemper at Boonville.
March 13—St. Paul's at Concordia.
March 20—Kansas City University at Kansas City.
March 20—Park College at Parkville.
March 25—Central at Slater High School.

March 29 to April 3—National Convention at Houston, Texas.

The climax of the season was the trip to the biennial national convention at Houston, Texas, where Valley won from South Dakota State, Baker University (Kansas), Kentucky Wesleyan, and lost to St. Thomas (Minnesota), Coe (Iowa), and Washburn (Kansas).

The achievements of the year were in no small measure due to Prof. D. M. Pasek, a member of Pi Kappa Delta, who is debate coach this year.

The members include: Mary Vance, President; William Ferguson, Vice-President; Lewis McAdow, Secretary; Hudson Harvey, Treasurer; Willard Ethridge, past President; and Prof. Pasek.

Those eligible for membership on the basis of work this year are: Lula Crockett, Leo Hirtl, Reinhold Jensen, Marjorie Moore, Charles Reno, and James Sutton.

Pi Gamma Mu

The Pi Gamma Mu, a national social science honor society, was first established by Mr. Leroy Allen of Southwestern College, Winfield, Kansas, in 1924. Since this beginning, one hundred twenty-two chapters have been organized in many of the outstanding colleges of the country. In April, 1931, the Missouri Zeta chapter of the Pi Gamma Mu was established in Missouri Valley College. By 1934, sixty-six members had been chosen from the student body and the faculty of this college. Many others have since increased this number considerably.

Pi Gamma Mu was not organized to oppose any particular social movement; rather it strives to instill in the minds of the members a scientific attitude toward all social questions. Its motto is: "Ye shall know the truth, and the truth shall make you free." Its name is the initials of the Greek word meaning "Students of Social Science." At periodical meetings, contemporary social, economic, and political questions are discussed.

The society has a two-fold aim. First, it aims to inculcate the scientific attitude toward social questions so that the undergraduate student members will inspire similar ideals in those with whom they come into contact. Second, the aim is to keep alive this scientific social interest in the minds of all the members who have graduated. The broad field of interest found in Pi Gamma Mu can be realized by observing the ideals of the society: scholarship; social science; social service; social idealism; sociability; and sacrifice. Interest is not limited to the subjects found in the field of social science. Consistent with the ideals of the society the members of Pi Gamma Mu are outstanding in scholastic achievements in all fields. The officers of the society at Missouri Valley in 1935-36 were: Mrs. V. V. Huff, sponsor; Nell Boatright, President; Lewis Johnston, Vice-President; Miss Ona Wagner, Secretary-Treasurer.

Back Row: Condon, Arndt, Tapp, Johnston.
Middle Row: Guthrey, van der Maaten, Dr. Mack, Mr. Parsons, Barnhill.
Front Row: Ferguson, Thweatt, Boatright, Mrs. Huff, Vance.



(47)

Sigma Phi Sorority

The Sigma Phi sorority of Missouri Valley College, sponsored by Mrs. C. C. Miller, with Miss Fern Nave as president, was organized September 5, 1930, by a group desiring to further the social life on the campus. Since that time, the sorority has realized its ideals of developing scholarship, loyalty, attractiveness, and graciousness in college women. Miss Madeline Ashton has been the sponsor since 1931.

The social program of the Sigma Phi's has included the following: The rush season opened with a tea at the home of Miss Ashton, followed by a bridge party at the home of Mrs. Francis Beecraft, a line party at the Auditorium Theatre, a Halloween party at Miss Sparks', a picnic in the park, a waffle supper at Miss Ash-

ton's. The formal dinner held at the Ruff Hotel closed a very successful rush season. The Christmas party was held December 17, at the home of the sponsor. In May, the sorority gave a party in honor of Miss Ashton, who is leaving Missouri Valley to become a member of the faculty at the University of Kansas City. The Informal was held in Young Hall Lobby on December 14. The Spring Formal was held May 9.

The past and present officers include: President, Mary Jane Martin '35; Helen Jane Burruss '36; Vice-President, Nelle Boatright '35, Betty Houston '36; Secretary, Betty Houston '35, Melba Sparks '36; Treasurer, Helen Jane Burruss '35; Nelle Wilkening '36.

Back Row: Misses Edith Boatright, Ferguson, Anderson, Huston.
Middle Row: Misses Evans, Gunn, Schroeder, Deis, Fields, Kohler.
Front Row: Misses Hail, Wilkening, Nell Boatright, Martin, Sparks, Burruss.



Valkyr Sorority

In 1922, twenty Valley girls banded together to give organized support to the Vikings in their victories and defeats, and called themselves the "Zoorites." As they were supporting the Vikings, in 1924 they changed their name to "Valkyr," which means "Companion to the Viking."

In the summer of 1930 the club, upon the advice of the faculty and the wishes of the members themselves, became a social organization, with their basic ideas continuing to be support of the Vikings and the fostering of scholarship, loyalty, and friendship so that all members might be a symphony of helpfulness and high purpose.

For the year 1935-1936 the Valkyr officers included Katherine Browder,

President; Ruth Eisenstein, Vice-President; Ruth Hains, Secretary; Mary Vance Treasurer; Dorothy Robinson, Warden. The officers for 1936-37 include, Mary Vance, President; Maxine Reid, Vice-President; Leva Lash, Secretary; Jean Guthrie, Treasurer; Dorothy Armstrong, Warden. Miss Opal Moore has been the sponsor since 1934, and was initiated into honorary membership last fall.

The Valkyrs enjoyed an extensive social season this year. The rushing activities included an all-school tea, a waffle supper, an afternoon party, a progressive dinner, a breakfast, and a formal dinner at Arrow Rock Tavern. Other activities included an informal dance January 11, a formal May 2, and an alumni breakfast in the latter part of May.

Back row: Misses Vance, Beulah Jones, Mitchell, Campbell, Weston, Stewart, Armstrong.
Middle row: Misses Yeager, Martha Jones, Davis, Guthrie, Browder, Nutting, Eisenstein, McLeod.
Front row: Misses Gordon, Lash, Robinson, Moore, Ronchetto, Haines, Reid.



*You certainly have kept me from
being late lots of times. I hope you are
going to be here next year. Lots of luck
& success - from your one-time accounting
preceptor. Ruth.*

Alpha Delta Kappa Fraternity

The promotion of scholarship, fellowship, and a better social life: these are the aims of Alpha Delta Kappa, men's fraternity established at Valley in 1927 replacing the Tri-C Club.

The year '35-'36 has been one of the most successful in the history of Delta Kappa. Ten active members returned this year. Activities of the organization for the past year included: An annual rush banquet at the Goodwin Hotel, a dinner for pledges at Young Hall, a tennis tournament, an informal dance, a steak fry, an athletic night, a formal dance in April, and the annual fishing trip.

Dr. Percy Johnson, last year's sponsor, was unable to continue in this position due to other duties on the campus, and Dr. John M. Raines became sponsor. For

his splendid cooperation and guidance Dr. Raines was elected honorary member.

The Delta Kappa Fraternity has been led ably by its officers, who are: Grand Chancellor, Clarence Arndt '35, Paul Barnhill '36; Chancellor of Seal, Paul Barnhill '35, Sidney Sullivan '36; Chancellor of Council, Sidney Sullivan '35, Robert van der Maaten '36; Worthy Chaplain, Louis McAdow '35 and '36; Honored Guard, Howard Becker '35 and '36; Altar Chaplain, James Woodsmall '35 and '36; Pledge Master, Hudnall Harvey '35 and '36.

The fraternity is represented in every honorary organization on the campus, in sports, forensics, student government, music and the Y. M. C. A.

Pledges not included in picture are Joseph Johnson and Jack Cox.

Fourth row: Kirby, McChesney, Guthrey, Weston, Becker, Carnahan,
Carter, Kline, R. Barnhill, Woodsmall, J. Carter, Harvey, Cook
Third row: Arndt, Sullivan, P. Barnhill, Dr. Raines, van der Maaten, McAdow
Second row: Ewell, Ward, Wilson, Bush, Duncan
First row:



Sigma Nu Fraternity

The Beta Gamma Chapter of Sigma Nu was first established at Missouri Valley in 1891, but upon an administrative ruling barring national fraternities on the campus, it became inactive and was replaced by the Tharsus Club. In 1931, upon the withdrawal of the ruling, the Tharsus Club dissolved and the national organization was reestablished with Prof. W. I. Ferguson sponsor.

Under the leadership of Commander Frank Robertson, Beta Gamma showed its most marked improvement in many years. At the outset of the year, only a mere skeleton of officers composed the chapter; but a well planned rush campaign, and continued effort on the part of each member brought the organization to capacity before the start of the second semester.

Great improvements were made in the dormitory living conditions. An entire

corridor was secured for the chapter members and pledges, and the rooms were furnished uniformly. One room was converted into a lounge, and a library and radio were installed. Hall-rugs were also laid.

The annual election found William Ferguson succeeding Frank Robertson as eminent commander, Willard Ethridge re-elected lieutenant commander, Gilbert Holloway made treasurer, Faber Wickham following William Ferguson as chaplain, and Gene Stanwood succeeding himself as secretary.

The social functions through the year consisted of numerous smokers or stag parties at the country club, a dinner party at the Ruff Hotel, an informal in the lobby of Young Hall January 18, and a spring formal held in Morrison Gymnasium May 16.

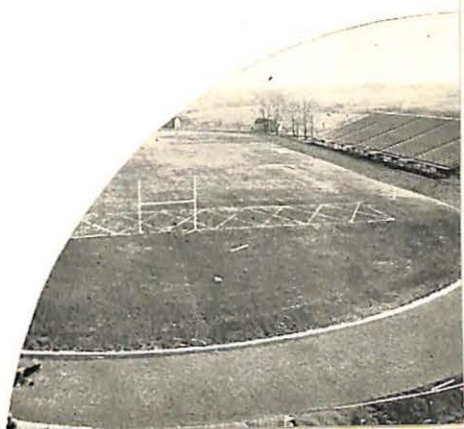
Back row: Place, Stanwood, Kuddes, Robertson, Cayot, Henley, Stephens.
Second row: Cardy, Turrentine, Ferguson, Hamilton, Ethridge, Baker, McKenzie, Bothwell.
Third row: Haas, Lee, Sebastian, Mrs. W. I. Ferguson, Prof. W. I. Ferguson, Holloway, Schutte, Wickham.
Front row: J. Brown, Mertgen, Fields, Eerndon, Heizer, Kennedy, Beecher.



Virginia - This was a surprise! But a very enjoyable one. Thanks a lot for the various little things that have been a great help. Great wishes Steve



ATHLETICS



Athletic Schedule 1935-'36

FOOTBALL

Date	Opponents	Place	Opp. Score	MVC Score
Sept. 27	Central	There	17	20
Oct. 4	Kemper	Here	6	13
Oct. 11	Rockhurst	There	16	13
Oct. 18	Principia	Here	0	19
Oct. 25	William Jewell	Here	0	19
Nov. 2	Culver-Stockton	There	0	12
Nov. 8	Tarkio	There	7	6
Nov. 15	Wentworth	There	6	0
Nov. 28	Central	Here	12	14
Total			64	116

BASKETBALL

Dec. 18	Kemper	There	18	22
Jan. 13	Culver-Stockton	There	24	29
Jan. 14	Culver-Stockton	There	31	32
Jan. 17	Westminster	Here	33	25
Jan. 17	Westminster	Here	30	21
Jan. 28	Drury	Here	29	44
Jan. 31	Tarkio	Here	29	44
Jan. 31	Tarkio	There	39	26
Feb. 4	Central	There	50	45
Feb. 7	Culver-Stockton	Here	23	35
Feb. 7	Culver-Stockton	There	23	35
Feb. 13	Tarkio	There	26	25
Feb. 14	William Jewell	There	26	25
Feb. 14	William Jewell	Here	23	25
Feb. 18	Central	Here	31	26
Feb. 21	William Jewell	Here	31	26
Feb. 21	William Jewell	There	41	14
Feb. 24	Westminster	There	43	35
Feb. 24	Westminster	Here	43	35
Feb. 28	K. C. Stage Liner	Here	43	35
Total			441	404

TRACK

April 10	Chillicothe B. C.	There	48 ¹ / ₂	96 ¹ / ₂
April 17	Kansas Relays	There		
April 24	William Jewell	Here		
May 1	Drury, Central	Here		
May 8	Westminster	There		
May 15-16	State Meet	Fulton		

BASEBALL

April 8	Drury	Here	13	12
April 9	Drury	Here	4	5

Football

Valley again rang the championship bell in the 1935 M.C.A.U. football race. Coach Godfriaux saw the team captained by Gib Holloway take six of its nine games and pile up the total score of 116 to only 64 for the opponents. The first game of the season with Central was taken as an omen that the Vikings were again destined to seize the laurels of the conference.

The exhibition game with Central is remembered as the first victory and showed the second-half punch of the Vikings. The second game, with Kemper, consisted of few spectacular plays, but again the Norsemen emerged triumphant. The first defeat of the season was registered when Rockhurst held on to the margin gained by an intercepted pass.

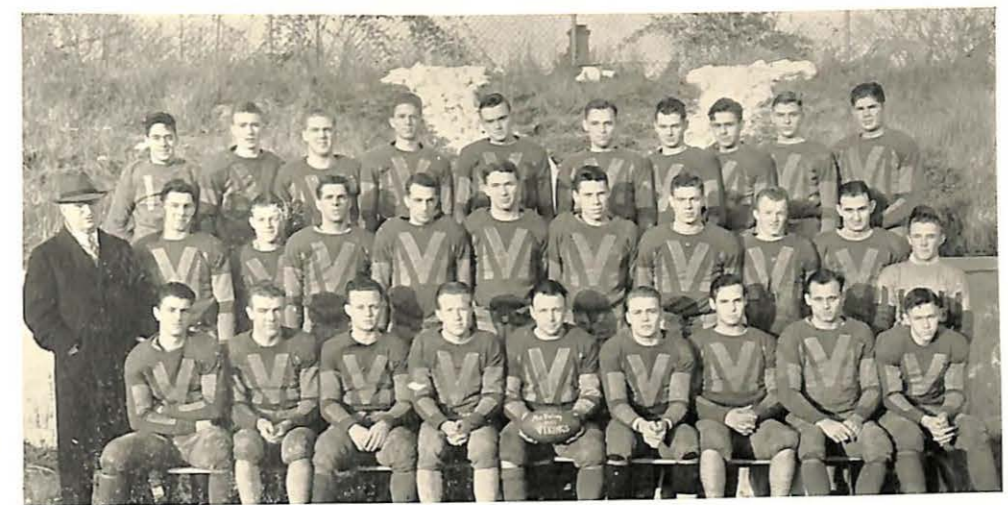
Refusing to be daunted, Valley overran Principia to the tune of 19-0 and repeated the following week by defeating Jewell with the same count. It was here that Red Leech gave a lesson on elusive-

ness. The victory march progressed with a roughly-fought win over Culver-Stockton. The 7-6 defeat at the hands of the heavier Tarks jolted Valley, but the 6-0 defeat, this time by Wentworth, was the worst of the season for the Viking gridsters.

The Turkey Day battle with the Central Eagles again was the championship game. After leading for some time by 7-6, Valley fans were paralyzed when Central pushed over another touchdown, giving them a comfortable lead of five points. Striving desperately, Godfriaux's charges were attempting to get into a favorable scoring position, when Robertson rushed through to fall on a blocked punt. The championship had been decided.

Under the efficient direction of Coach Godfriaux, new talent was discovered this year to back up the power given by upper-classmen. This year's experience has again proved Valley is a stronghold for the sport of football.

Back row: Beale, Hodge, Beasley, Brown, Williams, Roitman, Gann, Bily, Kennedy, Russell.
Middle row: Coach Godfriaux, J. Jones, Purpus, McKenzie, Scott, Long, Robertson, Place, Leech, B. Jones, Brown.
Front row: Gabba, Freeman, Branscomb, Sebastian, Holloway, Hamilton, Bothwell, Carnahan, Patterson.



"GIB" HOLLOWAY
Captain
Center, Full-back

"BUDDY" BOTHWELL
Guard

RALPH BRANSCOMB
Full-back

"MEL" CARNAHAN
Guard

Virginia - I don't know whether to mention accounting or not. Perhaps, I shouldn't but I have as you don't always as you have had in here - Best of luck always - Sincerely Sid



Football

"JIMMY" LONG
Tackle

Best of luck to a fine girl "Dick" Luman

"DICK" FREEMAN
Guard

To real student lots of luck Gaba

WOODROW GABA
End

WILLIAM HAMILTON
Half-back

Football

"RED" LEECH
Half-back

EDWIN MCKENZIE
Full-back

ROBERT PLACE
Center, End, Half-back

"BUDDY" PURPUS
Half-back



FRANK ROBERTSON
Tackle

LLOYD SCOTT
End

GENE SEBASTIAN
Quarter-back

MORRIS TAPP
End

*Dear Virginia:
I haven't known you very well but I am sure we will get to know each other better next year. Lots of luck - hope to see you next year
Mel Carnahan*

Basketball

Led by Captain Nathan "Tubby" Roitman, and under the skillful coaching of Henri R. Godfriaux, the Missouri Valley Vikings wound up their basketball season in fourth place in the M.C.A.U. conference. In the M.C.A.U. tournament held in the Valley gymnasium at the end of the season the Vikings succeeded in capturing third place. This closed one of the most successful seasons in basketball that the Purple and Gold has seen for many years.

The Vikings opened the season with a trip to Boonville where they defeated the cadets in a practice game by a 22-18 score.

They then journeyed to Canton where they engaged Culver-Stockton in two games and took both of them. The first by a score of 29-24, the second, 32-31.

The first home game was lost to Westminster, 25-33. Drury next defeated the Vikings on the home court, 21-30.

But the Vikings proceeded to stage a comeback by soundly trouncing Tarkio on the home grounds by a one-sided score of 44-29.

At Fayette the Valley basketceers lost to their traditional enemies, the Eagles, with the short end of a 26-39 score.

They next played Culver-Stockton at Marshall and lost this time in a hard fought over-time-period game, 45-50.

On the next two-day trip the Vikings journeyed first to Tarkio and administered a drubbing to the Tarks—35-23. But the next day they lost to William Jewell at Liberty in a terrific battle by one point—25-26.

At Marshall the Central Eagles went down before the home team, losing 25-23.

The last home game of the season found William Jewell on the home court winning from the Vikings, 26-31.

The season ended with Valley losing to Westminster at Fulton, 14-41.

In a post-season game the Vikings lost to the Kansas City Stage Liners "B" team, 35-43. The home team displayed a good brand of basketball and kept the visitors on their toes all during the game.

When the season closed the Vikings had registered five victories and seven losses in the conference.

Back row: Coach Godfriaux, Bent'n, McKenz'e, Goober'n, Weston, Harper, Beasley, Fowler, Holic.
Front row: Cox, Buntin, Guthrie, Roitman, Long, Sullivan, Leech, Patterson.



Baseball

A decidedly favorable outlook greeted the Missouri Valley baseball fans at the beginning of the 1936 season. Although the squad was small, it included a majority of last year's team and it was strengthened considerably by several players from this year's Freshman class. Coach Godfriaux displayed unusual ability in training a small squad to compete successfully with other college teams.

Drury was again Valley's first opponent of the season. This time, however, Drury faced more experienced and formidable opposition. Instead of Valley's receiving two defeats, as last year, the Vikings were victorious in the second game of a two-game series. Drury managed to eke out a 13-12 victory in the first contest, but the Norsemen retaliated the following day by taking a 6-5 decision. This second contest went ten innings, but was finally decided when Carnahan popped a fly between shortstop and left field, allowing a Valley man

to score. In the two games, Roitman and Sullivan went the entire route as pitchers for Valley.

At the time of this writing, the remaining games are scheduled with Park, St. Paul's College, Westminster, with a return engagement with Drury at Springfield. If Coach Godfriaux's charges continue to improve, especially in fielding, they will be able to stand on even terms with any of these opponents. With several men being lost by graduation this year, there will be a demand for new talent next season. It is hoped that this ability will be at hand to continue the progress already made.

The squad: Sebastian, 2nd base; Buntin, center; Robertson, outfield and 1st base; Long, 1st and 3rd bases; Sullivan, pitcher and outfield; Patterson, 3rd base and outfield; Roitman, outfield and pitcher; Carnahan, outfield; Scott, outfield and pitcher; Purpus, shortstop; Kuddes, pitcher; Helzer, pitcher.

Back row: Sullivan, Carnahan, Kuddes, Long, Scott, Buntin, Helzer, Coach Godfriaux.
Front row: Brown, Patterson, Robertson, Sebastian, Roitman, Purpus.



Virginia - I don't know how to thank you for all the help that you have given me in my work & I appreciate it. Love, Fred Guthrie

Track

Valley faced the 1936 track season with a small turn-out for the sport, with only six lettermen reporting, six upper-classmen, and six first-year men. Although the prospect did not seem particularly bright with only eighteen men, the fact was noted that other Missouri colleges were also facing difficulties in the sport.

To Homer Leech, who is versatile in all of the track events, was given the job of managing and coaching the squad and it is to his credit that the group has improved considerably in nearly all events. Valley proved this advancement in the first meet of the season when it swamped Chillicothe by a score of 96 to 48. Led by Leech, who was high point man, the Norsemen took the majority of firsts, and then proceeded to win both relay events.

The Lettermen group is made up of Homer Leech, James Long, Cranlee Jenkins, Lloyd Scott, Willard Ethridge, and Richard Freeman. Leech and Long were especially consistent in the field events.

while Scott, Jenkins and Ethridge ran well as the contestants in the quarter mile and sprints.

The first year men brought considerable training with them. Some entered several events, but their greatest strength was in the sprints and middle distances. The remaining upper classmen, from the sophomore and junior classes, contributed the necessary balance in the distance and the middle distance events. Valley is expecting much from these in the 1937 season.

The squad: Leech, hurdles, field events, and relay; Long, weights; Scott, quarter and relay; Freeman, mile; Jenkins, dashes and quarter; Ethridge, dashes and relay; Brown, mile, half-mile; McAdow, half-mile and hurdles; Carter, two mile; Bush, pole vault; Cline, pole vault; Place, field events and relay; Emmerson, sprints, half-mile; Williams, hurdles; Gaba, sprints, hurdles and relay; Ward, sprints, relay; Bily, field events; Robb, middle distances.



(60)

Tennis

The tennis season started this year on the Missouri Valley courts with a good deal of interest being shown and with a good number of Vikings interesting themselves in the sport.

The team this year was coached by Dr. John M. Raines, who came to Valley to head the English department this year. Dr. Raines has been interested in tennis for the greater part of his life and has been an active participant in the game for many years. While he was at Tarkio he was a finalist in the M.C.A.U. tennis tournament which was held there. Dean Earl Pettijohn was formerly coach of tennis at Valley, but this year other duties kept him so busy he was unable to take on this added responsibility.

At the beginning of the season a tournament was held among those out for tennis. The purpose of this event was to measure the individual ability of the participants and to determine in some measure to whom the berths on the team should go.

During the season the squad engaged in rather an extensive number of matches with other schools. During the course of the season the Vikings met representatives from Kemper, Wentworth, Central, William Jewell, and St. Paul.

The squad also attended the State Meet which was held this year at Westminster. It was originally scheduled to be held on the Valley campus but for various reasons the plans were changed.

Those men with experience who had played tennis at Valley before and who formed the backbone of the team this year were: Homer Cook, sophomore; Howard Becker, sophomore; Virgil McDowell, junior; and Clarence Arndt, senior.

The new men who were out for the first time this year included: Clarence Fowler, freshman; John Holic, sophomore; Joe Johnson, freshman; Louis Schultze, freshman; Joe Weston, freshman; Hudnall Harvey, sophomore; Joe Carter, freshman; Bill Kirby, freshman; and Charles Baker, sophomore.



(61)

Women's Athletics

Athletics for women at Missouri Valley College has been under the able supervision of Miss Louise DeGaris.

A large part of the athletic work has been based upon corrective work. For those girls who would ordinarily have been compelled to forego gym, lighter work was assigned. Archery took these girls out of doors and was at the same time not too strenuous for those physically deficient. Considerable ability was developed by the members of the class before the end of the year. Tennis instruction for beginners was given in the fall and the spring, with a tournament for the college women and men in the spring culminating this instruction.

In the regular classes Danish exercises were used to a great extent, with the aim of correcting poor posture and bodily mechanics. Work for those with foot trouble was also taken up in class. Supplementing the work with Danish exercises was instruction in the use of the suspended ring, and the elementary tap-dance steps.

Health surveys were given all girls in the beginning of the school year. These examinations were given again at the end of the first semester and the end of the second semester to check up on the improvements. An eighty-two per cent improvement over the records made in the fall was found in the spring examinations, with the greatest improvement in chest expansion and fallen arches.

The first aid class was increased from a one to a two-hour class. The American Red Cross state test was given to members of this class. A score of eighty or above qualified the student for a Red Cross certificate. This certificate gave the student the right to teach Red Cross work. Such an ability is particularly valuable to those who plan to teach in a school or who will have charge of some scout troop.

The work in women's athletics was climaxed by the presentation of a spring fantasy in May. Most of the students in the gym classes were thus given an opportunity to participate in some production.

"A Spring Fantasy in Toy Land," was presented in honor of the May Queen, Miss Nelle Boatright, the Class Queens, their attendants and escorts, on May 8, 1936, at 8:00 P.M., outdoors on the college campus.

Miss Opal Louise Moore, a member of the music department of Missouri Valley College, directed the singing and accompanied the solos.

The costume designing was under the direction of Katherine Browder, Lucille Hoff-farth, Anne Murray and Mary Weston.

Lee Cardy and William Ferguson had charge of the lighting and the stage setting. The cast for the dances included:

- | | |
|---------------|--|
| Spring | Jean Gordon |
| Irish Dolls | Janet Mitchel, Mariana West, Elaine Griffis and Evelyn Anderson. |
| Rag Doll | Marjorie Moore |
| Sailor Dolls | Martha Jones, Sue Davis |
| Negro Doll | Ruth Eisenstein |
| Jumping Jacks | Lucy Mae Jones, Mary Francis Pardee, Ruth Grinstead |
| Spanish Dolls | Rachel McLeod, Mary Yeager. |
| Italian Dolls | Loretto Ronchetto, Catherine Campbell |
| French Dolls | Mary Elizabeth Cardy, Josephine Mallman, Leva Lash. |
| Russian Doll | Joan Stewart |
| Tin Soldiers | Alice Deis, Ruth Haines, Anna Mae Kregel, Lucille Crowder, Coylie Pohleman, Dana Nutting, Faunice Wilson, Doris Balthis. |
- The group which participated in the singing was a select group of boys chosen by and under the supervision of Miss Moore.

Lois Collins, Alice Deis, and Jean Guthrie assisted in the production. Lois Collins accompanied the dances. Alice Deis arranged and directed the tin soldier drill. Jean Guthrie had charge of the make-up for the performance.

The "Spring Fantasy" took place after the May Queen and her attendants had taken their places in the seats arranged for them, and after the coronation of Miss Boatright, the May Queen. A short sketch of the story follows: The scene was a doll house with all the dolls in rigid attention at the opening curtain. Spring entered and, dancing the dance of spring, awoke all the dolls. After this opening dance, Spring commanded the dolls to dance, indicating the turns of the different dancers. This thread of a plot served to hold the dances and music into a semblance of a story, yet definitely subordinated the story to the music.

Aside from the regular gym work, there is a chapter of the national Women's Athletic Association present on the campus. The purpose of this organization is four-fold. It desires to create and further an interest in all forms of athletics suitable for women; to promote all types of athletics for the many, rather than specialization for the few; and to promote intra-mural tournaments.

The requirements for membership are entirely individual. First a girl must earn seventy-five points to be eligible for election into membership. Points are gained in the following manner: for being on a regular hockey, soccer, basketball, or tennis team 15 points (if it is a championship team, 20 points); for entering volleyball and baseball 10 points; for hiking, one point a mile on a minimum five-mile hike; for keeping health rules for two weeks (which may be done once each nine weeks) 10 points; for horseback-riding, 2 points an hour; for dancing 10 points; being in a public program 20 points; for entering the archery tournament, 5 points, (high score 20 points, second score 10 points); president of the organization, 100 points; if any other officer in organization, 50 points.

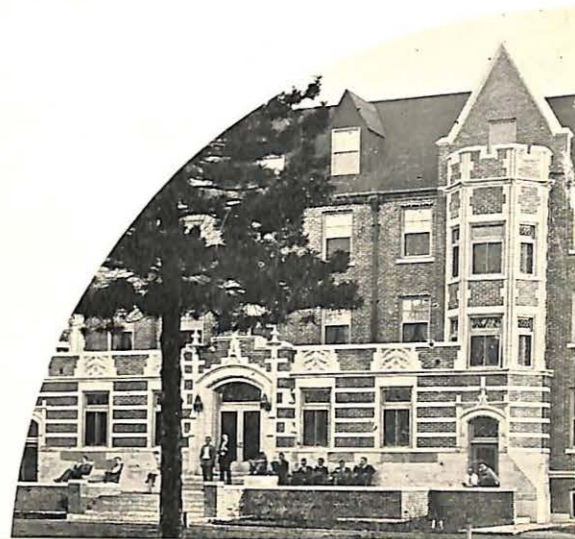
The members and officers for 1935-36 were: Betty Huston, president; Rachel McLeod, vice-president; Lucille Schroeder, secretary; Pauline Allen, treasurer; Mary Jane Martin, Adeline Koller, Ann Murray, and Ruth Ferguson.

The past year, due to lack of funds and many intervening barriers, the W.A.A. of this campus has not been so active as in previous years, but it is planned that next year the organization have a very busy, successful program.





FEATURES



Dear Virginia,
 (That's your fountain pen
 to come down and look
 And you too! you ought
 to grow to know you
 let the spirit of the village
 show you around.
 Always,
 Nell



Miss Betty Huston
 Deepwater
 Sigma Phi

HARVEST QUEEN

Dear Virginia,
 Merci beaucoup for all the rides
 & all the translations. I am indeed
 grateful. Come see me this summer.
 I'm awfully glad I really
 got to know you.
 Always a friend,
 Nell



Miss Nell Boatright
 Marshall
 Sigma Phi

MAY QUEEN

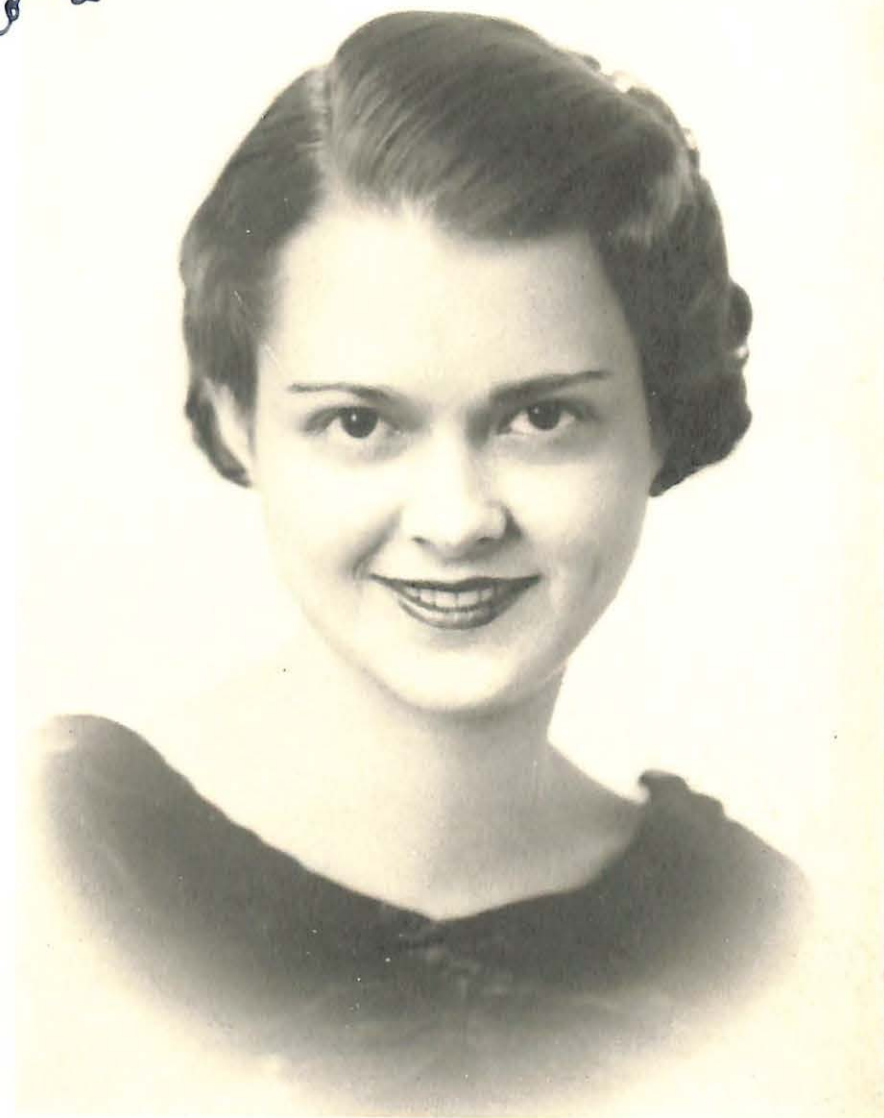


Miss Adeline Koller
Denmark, Iowa
Sigma Phi

SENIOR QUEEN

Dear
Virginia -
I've really been fond
of you and I
miss you - I've
missed you
to school - I
miss you
sometime -
I wish I could
return it
Dorothy

Miss Dorothy Robinson
Marshall
Valkyr



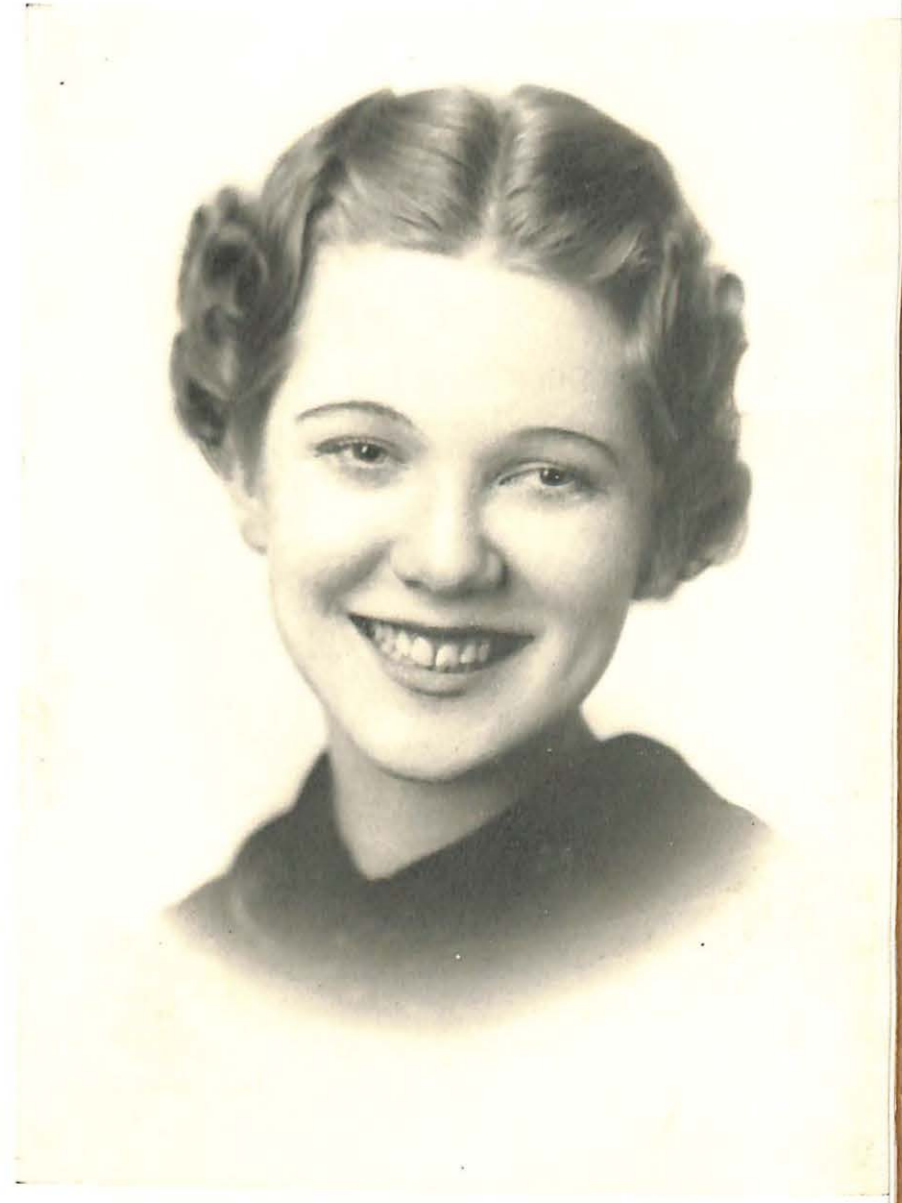
JUNIOR QUEEN



Miss Lucille Schroeder
Blackburn
Sigma Phi

*If we have any more classes & you
we should have some more
real well. We enjoy & knowing you
then last 2 yrs. Baby with always
L.S.S.*

SOPHOMORE QUEEN

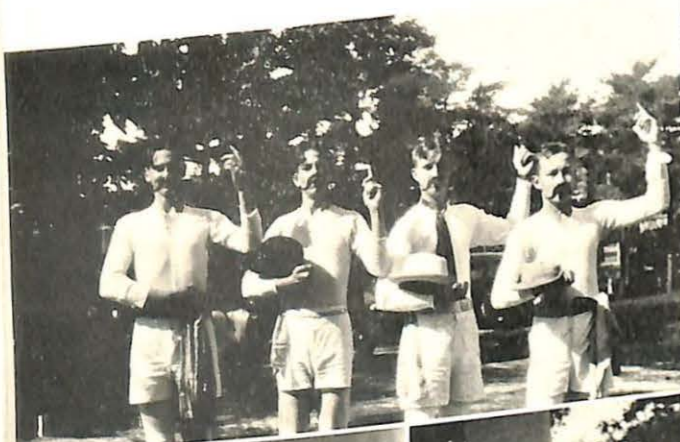


Miss Dorothy Armstrong
Saint Louis
Valkyr

FRESHMAN QUEEN

*Here's wishing
lots of luck and
success. Always your
"Stepper"*

1. The Flying Finkelsteins



2. Helping Stepper



3. Art sees Esther home



4. Can this be?

5. Teacher's pet

6. Some of our happy family

7. The Colonial



1. Hansen's hot-shots



2. Cran and Cremo

*Virginia:
But you won't forget
those nights at reading
books, and you'll
only see that power
my In Memoriam
I'll you I'll with
wings like you
to your problems,
I'll fit to the top.
Sincerely,
H. Haas*

4. Pyramus and Thisbe
as a thespian thces
it

5. Friends of the col-
lege



6. Jo flexes her latissimus dorsi

7. Parley voo Frawnsay?



1. Hirtl is hounded
2. But where's Frank?
3. Sebastian scores
4. Joe does well by himself. Or is it Sam?
5. Sample of hardy types at Valley
6. Beco and Marge on Sunday
7. Provinder providers
8. Marcia Lou—"You don't happen to have any candy with you, do you?"
9. Pie eaters

10. A Cappella recapitulations—a candid glimpse

11. Dorothy, Nellie, and Ruthie
Do you remember when you took his picture? I know that you remember our French class in the C. C., also the candy bar that Nell and I helped you eat. Lots of luck to you. -Barbety Walton

*Virginian— Nice snappy French class we've had this year isn't it? I'm glad it's nearly over, I hope. Wish you lots of success and happiness.
 Rachis Brown*

*For two years we've been fellow-sufferers. May you always be successful!
 Marianna*

1. Where's the fire?
2. Can they take it?!
3. Watch it, folks!

4. Fields & Fields—Osceola duo
5. The little Jack Little of the Kimball and Mrs. Fichthorn
6. Our favorite artist and story-teller
7. Peaches pretends
8. Little man, you have a busy day
9. Still more of our happy family
10. Scientists—bug and smell
11. In the thick of the fray—the sack rush
12. Old greets new
13. Sebastian goes Garbo



1. Kraut prepares for a three bagger

2. Spring baseball's here again



3. How're you doin', Laaten?

4. Some of the off-campus gals

5. Week-ending in K. C.?

6. Part of our faculty. (Pipe the accounting director)

7. Greeting the mail-man

8. After Vespers—Easter

1. Spree day participants and spectators

2. Sons of Aurora

3. Bill and Ross make hay

4. On our campus?

5. The Sophs get laundered

6. The duck walk

7. Football banquet

8. Clothes-line acquaintance



*Don't forget
some of the times
we had in N.H.S
years
M. Winkle*



1. Gene and Eleanor — a going concern

2. Frank and Burruss (note the radiance emanating therefrom)

3. Franklin and Addie — new but with the right idea

4. Old faithfuls Scott and Wilkening

5. Not a couple, but a couple of A-1 cases of mumps

6. Prides of Pleasant Hill and Deepwater

7. Lee and Mary E., a studious pair

8. Jean and Overly—two *real* people

9. Little Boatright and Tapp

Campus Life

Stewart: "It's been half an hour since you promised us that turtle soup."
 Kay: "Yes, but you know how turtles are."

Schutte: "Hey, your shoes are mixed; you've got the left shoe on the right foot."
 Cardy: "And here for twenty years I thought I was club-footed."

STANDPATTER'S CLUB

Motto: "That's my story and I'm sticking to it."
 President: John Guthrey.
 Vice-President: Dr. Malcolm.
 Members: Mary Yeager, Louis Hansen.
 Charter member: Mrs. Huff.

Brownlee: "If you are tired of dancing, let us sit down and have a little tete-a-tete."
 Alma: "No, thank you. After such a big supper I couldn't eat a thing."

Traffic Officer: "Don't you know that you can't turn around in the middle of the block?"
 Dr. Mack: "Oh, I think I can make it. Thank you so much."

Professor Sutton: "Speaking as an artist I would say that the golden skin of this grapefruit is beautiful."
 Dr. Johnson: "But speaking as a practical person, I must admit that it is generally the juice that catches the eye."

Miss Coed said recently: "In the spring a young man's fancy lightly turns . . . and turns . . . and turns . . . and turns—"

Who was it that said in regard to Mrs. Huff, "Father, forgive her, for she knows not how much she makes us do"?

Speaking of these hard boiled dieticians, Minnie used to heed her conscience but she has gotten so she talks back and makes her conscience meet her half way.

SOCIETY OF THOUGHT

Time: Any time.
Place: Everywhere.
Colors: Deep mourning.
Motto: "What's de use?"

SISTERN AND BRETHERN

Mel Carnahan
Catherine Campbell
Lucille Shroeder
Virgil McDowell

Stepper Gann
Vincent Igo
Ruby Frazier (see Charlotte Howe)
Roy Harris (ditto)

The moral lesson even Dr. Mack forgot to add: "You shouldn't talk too bitter about this world. It is just possible that you will not get to live in a better one."

Helen Jane says she likes the tone of Frank's voice. Reason? She probably thinks there's a ring in it!

Says Dr. Raines:

"There's meter iamic, dactylic,
There's meter of rime and of tone."

"Yes," concludes McAdow:

"But the best kind of meter I know of
Is to meet her by moonlight alone."

Prof. Haley mentioned recently that free wheeling would be all right if it weren't for the fact that the rest of the car costs so much.

"Are you ill?" asked Miss Allen. "Let me see your tongue please."
"It's no use, Nursery," replied Jimmy Long. "No tongue can tell how bad I feel."

Death Report at Missouri Valley College - 1935-36

NAME	AGE	DIED	WHERE	CAUSE OF DEATH
Mary Yeager	Unlucky 13	Last year	Mrs. Huff's class	Four courses under Mrs. Huff in one semester
Football fans	2 to 100	Turkey Day	Stadium	Last minutes of that game!
Dr. Raines' classes	About 15	First day after Christmas vacation	Classroom	S'prise - Dr. Raines had his hair combed!
Dr. Mitchell	We're afraid to say	Date can't be found	Classroom	Shock - Rachel came to class on time
Rachel McLeod	Sweet 16	"	"	"
Sophomores and Juniors	Doesn't make any difference	April 16, 17, and 18	Little Theater	Comprehensives
Student body	One year older than last year	Any Tuesday	Chapel	Ahem-er-you guess
Faber Wickham	Who can tell? (or wants to)	Most any day	Dining hall	Extreme case of starvation
Dr. Mitchell	'Nuff said	March 4	Sociology class	Laughing at Frank
Everybody in General	Name it yourself	January 26	Advisor's rooms	Grades came out
Jean Guthrie	Perfectly fresh	Most any day	Birkhead	Grading Freshman English papers

BROTHERHOOD OF KNEEPADDER'S

Motto: We strive to please.

President, Vice-President, Secretary-Treasurer: Marshall Coffman.

Members:

Lloyd Scott Charles Backer Lee McCorkle

Lucille Hoffarth: "I suppose your home-town is one of those places where every one goes down to meet the train."

Ruth Grinstead: "What train?"

Traffic Cop: "Use your noodle, lady! Use your noodle!"

Miss Moore: "My goodness! Where is it? I've pushed and pulled everything in the car."

Lucy Jones adores spinning wheels, but she wants four of them and a spare.

Campus Calendar 1935-36

- Hear ye! Hear ye! This court is ready to hear the case of the United States vs. Mr. Viking Spirit. Proceed, Mr. Prosecutor.
Your Honor, in summing up my case against Mr. Viking Spirit, may I enumerate the affairs that he neglected to include on his annual amusement tax report?
You may.
- Sept. 10-11. He registered at Missouri Valley College and had a lot of fun getting acquainted and attending bull sessions.
- Sept. 13. He began freshmen initiation and serenaded the gals.
- Sept. 18. He got out of classes and helped the freshmen defeat the sophomores on Spree Day.
- Sept. 21. He attended the All-School Dance and had a wonderful time!
- Sept. 27. He helped beat Central 20-18 and gave the poor freshmen boys the right to date.
- Oct. 4. He attained another victory; this time against Kemper, 13-6.
- Oct. 7. He ate hot dogs at the Delta Kappa picnic.
- Oct. 11. He was in Kansas City at the M. V. C.-Rockhurst game.
- Oct. 14. He started off Sorority rush week with a bang.
- Oct. 18. He beat Principia at Marshall.
- Oct. 25. He helped Valley defeat William Jewell.
- Oct. 26. He attended the Harvest Dance and crowned Betty Huston Harvest Queen.
- Oct. 31. First he sang himself hoarse at dinner, then he haunted the "Y" Hall-o-we'en Party.
- Nov. 2. He made Miss Wagner's party for all the college women a success.
- Nov. 8. He lost to Tarkio in football.
- Nov. 9. He aided Buddy Bothwell as toastmaster at the Sigma Nu dinner at the Ruff Hotel.
- Nov. 15. He helped the Vikings swim to victory at Wentworth on a cold, rainy night.
- Nov. 16. He listened to Joanne Taylor of Kansas City at the W. S. G. A. tea.
- Nov. 23. He cut in on everyone at the D. K. Informal.
- Nov. 25. He went to the Pi Gamma Mu meeting at Mrs. Huff's house.
- Nov. 26. He found the campus painted green by Central.
- Nov. 28. He was everywhere at once during the M. V. C.-Central game. In fact, he was the one who inspired Frank and Jimmy to make the winning touchdown. What happened to the eagle?
- Dec. 5. He listened to the beautiful music of Professor Fichthorn's recital on the new organ.
- Dec. 6. He went through all the buildings on Founder's Day and discovered several objects of interest missing from the dorms, and he also saw "A DOLL'S HOUSE" given by the D. A. C.
- Dec. 8. He heard a concert given by the Vesper choir at the rededication of Stewart Chapel.
- Dec. 12. He ate, listened to speeches, then danced after the football banquet. He was right proud of the M. C. A. U. football championship indicated on

- the Freshmen banner.
- Dec. 14. He enjoyed the Sigma Phi Christmas Informal.
- Dec. 17. He saw that the Valkyrs and Sigma Phis had successful Christmas parties.
- Dec. 18. He introduced Mr. Joseph E. Johnston as the New field secretary, and saw M. V. C. through the first basketball game against Kemper.
- Dec. 19. He attended the three dorm Christmas parties and went caroling afterwards.
- Dec. 21. He left school for Christmas Vacation.
- Jan. 7. He started school again and saw Dr. Raines bring back a new wife.
- Jan. 10. He tore around and played games with the freshmen at their party.
- Jan. 11. He saw to it that the Valky informal was a success.
- Jan. 17. He elected Nell Boatright May Queen.
- Jan. 18. He almost wore out his shoe leather dancing at the Sigma Nu informal.
- Jan. 20-24. (Perhaps this should not be included but)—he struggled through those awful final exams.
- Jan. 27. He registered for the second semester.
- Jan. 28. He was disappointed at the loss of the basketball game to Drury.
- Jan. 30. He journeyed to Columbia with a group of students to hear Kagawa.
- Jan. 31. He saw the M. V. C.-Tarkio game here.
- Feb. 4-7. He gained a lot of valuable information by attending Dr. Vance's lectures during Spiritual Emphasis Week.
- Feb. 7. He was with the Vikings during the Culver-Stockton game.
- Feb. 14. He looked for prospective students at the High School Basketball Tournament.
- Feb. 15. Listened to Bob Shimoda, a Japanese exchange student from William Jewell.
- Feb. 18. He went to another basketball game between Central and Valley.
- Feb. 28. He fairly went to town in a district debate tournament.
- Feb. 29. He almost died when he smelled the corsages sent to the boys by the girls for the skirt-hop at which Bob Place was crowned "THE BULL OF THE BALL".
- March 2. He talked fast and furiously at the North Central Debate Tournament.
- March 4. He attended an illustrated lecture on Mexico.
- March 19. He had a swell time on the trip to Kansas City with the mixed chorus—had a high time on the bus as well as broadcasting over WDAF.
- March 24. He laughed himself sick at little Pat's campaign speech for Gibby.
- March 27. He elected Gib student president and got out for Spring Vacation.
- April 4. He passed out when he got his grades. Also, he danced to a real orchestra at the Kollege Sity Dance.
- April 10. He witnessed "Ba Thane", the "Y" play, and was surely scared when Laten Carter come out with his dagger.
- April 12. He was with the Vesper choir singing at the Easter service.
- April 16-18. He realized his lack of knowledge in the comprehensive exams.
- April 18. He chose his senators for next year.
- April 25. He danced to some grand music at the Delta Kappa formal.
- May 2. Again he had a good time; this time at the Valkyr formal.
- May 8. He watched the beautiful May Fete. Nell Boatright, the May Queen, surely looked grand, as well as her elegantly dressed court, consisting of the

- class queens and their attendants.
- May 9. Another social event. This time he danced at the Sigma Phi formal.
- May 15. He was present at the Junior-Senior banquet and the dance afterwards.
- May 16. He went to the last formal of the year—that of the Sigma Nu's.
- May 22. He ate heartily at the Pi Gamma Mu dinner.
- May 23. He attended the dinner for the "V" Club and alumni dinner and also listened to the commencement recital.
- May 24. He went to the baccalaureate service, and enjoyed it, even if there were tears in his eyes.
- May 25. He helped usher out a fine group of students at the commencement exercises.
- May 26-30. He stood by all the poor students in their final examinations.
- May 30. He said a temporary farewell to all the Valleyrites, for he realized that no matter where they go, they will never forget the past year nor the Viking Spirit.....

Prosecutor: Your Honor, is this not sufficient evidence that Mr. Viking Spirit has attempted to evade his amusement tax?

Judge: I agree with you, Mr. Prosecutor, and I wish to congratulate you on this complete report Mr. Viking Spirit, for the serious offense of having evaded your amusement tax, I hereby sentence you to the state of Fun and Friendliness for the coming year.

COURT ADJOURNED

THE BOOK

Activities	37
Administration	6
Alpha Delta Kappa	50
Athletics	52
Athletic Schedule	54
Baseball	59
Basketball	58
Calendar	83
Campus Life	79
Chi Alpha	43
Chorus	39
Contents	5
D. A. C.	40
Dedication	4
"Delta"	37
Faculty	10
Features	64
Football	55
Freshmen	28
Freshman Queen	71
Harvest Queen	66
Juniors	22
Junior Queen	69
May Queen	67
Pi Gamma Mu	47
Pi Kappa Delta	46
Queens	66
"Sabiduria" Staff	36
Seniors	29
Senior Queen	68
Sigma Nu	51
Sigma Phi	48
Sophomores	25
Sophomore Queen	70
Students	18
Student Senate	17
Tennis	61
Track	60
Unphotographed Students	33
V-Club	42
Valkyr	49
Vesper Choir	38
Women's Athletics	62
W. S. G. A.	41
Y. M. C. A.	44
Y. W. C. A.	45

SENIORS

- Arndt, Clarence: 17, 20, 47, 50, 61.
- Boatright, Nell: 17, 20, 45, 47, 48, 63, 67.
- Ferguson, Ruth: 20, 38, 45, 47, 48.
- Freeman, Richard: 33, 42, 55, 56, 60.
- Gordon, Jean: 17, 20, 37, 45, 47, 49, 63.
- Jackson, A. B.: 20.
- Jeffers, Edward: 20.
- Jenkins, Cranellee: 20, 60.
- Johnson, Marcia M.: 33.
- Jones, Alma: 21.
- Koller, Adeline: 21, 38, 39, 41, 48, 65, 68.
- Martin, Mary Jane: 21, 36, 38, 41, 48, 63.
- Robertson, Frank: 21, 42, 51, 55, 57, 59.
- Roitman, Nathan: 20, 42, 55, 58, 59.
- Scott, Lloyd: 21, 42, 55, 57, 59, 60.
- Tapp, Morris: 21, 42, 47, 57.
- Thweatt, Virginia: 20, 36, 45, 47.
- Woodsmall, James: 17, 20, 36, 44, 50.
- Yeager, Mary: 21, 36, 38, 41, 45, 49, 63.

JUNIORS

- Allen, Pauline: 33, 38, 41, 63.
- Baker, Charles: 22, 38, 39, 51, 61.
- Barnhill, Paul: 22, 36, 47, 50.
- Bennington, Mrs. Roberta: 33.
- Bily, Arthur: 22, 38, 39, 43, 44, 55, 60.
- Butler, Eugene: 22, 43.
- Cardy, Mary E.: 22, 38, 39, 41, 63.
- Carter, Laten: 22, 38, 39, 43, 44, 50, 60.
- Coffman, Marshall: 22.
- Collins, Lois: 22, 38, 39, 41, 63.
- Deis, Alice: 22, 38, 39, 48, 63.
- Eisenstein, Ruth: 23, 38, 39, 49, 63.
- Emmerson, Harold: 33, 38.
- Ethridge, Willard: 23, 36, 39, 46, 51, 60.
- Ferguson, William: 23, 40, 46, 51.
- Goodwin, Phillip: 23, 37, 58.
- Guthrie, Jean: 23, 36, 38, 39, 40, 41, 45, 49, 63.
- Hansen, Louis: 23, 36, 38, 39.
- Hinnah, Arthur: 23.
- Holloway, Gilbert: 17, 33, 42, 51, 55, 56.
- Houston, Clay Belle: 22.
- Huston, Mary Elizabeth: 17, 23, 38, 39, 48, 63, 66.
- Igo, Vincent: 33.
- Irvine, William: 23.
- Johnston, Lewis: 23, 36, 37, 47.
- Leech, Homer: 23, 42, 51, 55, 57, 58, 60.
- Long, James: 23, 38, 39, 42, 55, 56, 58, 59, 60.
- Mallett, Harold: 17, 33, 43, 44.
- McAdow, Lewis: 24, 36, 43, 44, 46, 50, 60.
- McDowell, Virgil: 33, 61.
- McLeod, Rachel: 24, 36, 38, 49, 63.
- Moore, Opal Louise: 33, 14, 38, 49, 63.
- Murray, Ann: 24, 41, 45, 63.
- Place, Robert: 33, 42, 51, 55, 57, 60.
- Pugh, Jessie: 33.
- Purpus, Meritt: 33, 42, 55, 57, 59.
- Robinson, Dorothy: 24, 38, 40, 60.
- Schutte, Elmer: 33, 51.
- Sebastian, Eugene: 33, 42, 51, 55, 57, 59.
- Shaver, Harriet: 24.
- Sullivan, Sidney: 17, 33, 38, 39, 42, 50, 58, 59.
- Vance, Mary: 17, 24, 41, 46, 47, 49.
- van der Maaten, Robert: 17, 33, 47, 50.

SOPHOMORES

- Becker, Howard: 33, 59, 61.
- Beecher, Willis: 25, 51.
- Browder, Kay: 17, 33, 41, 49, 63.
- Brown, George: 25, 38, 55, 60, 44.
- Brown, Jay: 25, 51, 55, 59.
- Burruss, Helen Jane: 25, 38, 39, 41, 48.
- Cardy, Lee: 25, 38, 40, 51.
- Carnahan, Melvin: 33, 42, 50, 55, 36, 39.
- Cline, Caryll: 25, 50, 60.
- Cook, Homer: 25, 39, 44, 50, 61.
- Cox, Jack: 25, 50, 58.
- Crowder, Lucille: 25, 63.
- Ewell, Charles: 25, 50.
- Francis, Vernon: 33.
- Griffis, Elaine: 26, 41, 45, 63.
- Gunn, Gwen: 26, 48.
- Guthrey, Kile: 33, 50, 58.
- Haas, Robert: 33, 51.

Hains, Ruth: 26, 49, 63.
 Harvey, Hudnall: 26, 46, 50, 61.
 Hayob, Raymond: 26.
 Higgins, John: 26, 37.
 Hollie, John: 26, 36, 43, 44, 58, 61.
 Hull, Marian: 33, 40, 41.
 Jones, Paul: 26, 36, 38.
 Jones, Virginia: 26, 36.
 Keith, Homer: 26, 37, 38, 43.
 Kregel, Anna May: 26, 38, 40, 63.
 McCorkle, Lee: 33, 38.
 Mitchell, Franklin: 26, 38.
 Reid, Maxine: 27, 38, 39, 49.
 Reno, Charles: 33, 46.
 Schroeder, Lucille: 25, 36, 38, 39, 41, 48, 63, 70.
 Sparks, Melba: 27, 39, 48.
 Stanwood, Eugene: 27, 51.
 Sullens, Walter: 33.
 Walton, Dorothy: 27.
 Warren, Kenneth: 27.
 West, Mary Anna: 33, 63.
 Weston, Mary Elizabeth: 25, 38, 49, 63.
 Wickham, Faber: 33, 38, 39, 40, 43, 44, 51.
 Wilkening, Nell W.: 27, 37, 38, 39, 48.
 Wilson, Francis: 27, 50.
 Wood, Isabel: 33.

FRESHMEN

Agniel, Lucien: 33.
 Anderson, Evalyn: 28, 38, 63.
 Armstrong, Dorothy: 28, 38, 39, 41, 49, 71.
 Balthis, Doris: 28, 63.
 Barnhill, Robert: 33, 50.
 Beale, Carroll: 17, 33, 38, 39, 55.
 Beasley, Carelton: 33, 55, 58.
 Bennington, Roberta: 28.
 Billman, May A.: 28, 38, 39.
 Boatright, Edith: 33, 48.
 Bothwell, Clyde: 33, 42, 51, 55, 56.
 Branscomb, Ralph: 33, 55, 56.
 Buntin, J. L.: 33, 58.
 Buntin, Roy: 33, 58, 59.
 Burnett, Esther: 28, 38, 39.
 Burroughs, Robert: 33.
 Bush, Donald: 28, 39, 50, 60.
 Campbell, Catherine: 28, 49, 63.
 Carter, Joseph: 28, 36, 50, 61.
 Cayot, William: 33, 40, 51.
 Crank, Robert: 33.
 Crockett, Lulu: 28, 46.
 Davis, Sue: 28, 49, 63.
 Dickerson, Ruth: 28.
 Donelson, Russell: 33.
 Downing, Walter: 29, 38, 39.
 Drake, Mary Frances: 29.
 Duncan, Ralph: 29, 50.
 Emmerson, George: 33, 60.
 Evans, Genevieve: 29, 38, 39, 48.
 Feedback, Margaret: 33.
 Fields, Charles: 29, 38, 39, 51.
 Fields, Eleanor: 29, 38, 39, 48.
 Fowler, Clarence: 29, 58, 61.
 Frazier, Ruby: 29.
 Gaba, Woodrow: 33, 42, 55, 56, 60.
 Gann, Howard: 33, 55.
 Garrard, Mrs. Ruby: 33.
 Godfrey, Rollin: 29, 39.
 Grinstead, Ruth: 29, 38, 39, 63.
 Green, Garnett: 33.
 Gross, Melrose: 33.
 Hamilton, William: 33, 42, 51, 55, 56.

Hansford, George: 29, 39.
 Head, Lavenia: 29.
 Harper, Cecil: 33, 58.
 Hail, Rebeccahmary: 29, 37, 38, 48.
 Hall, Hugh: 33.
 Helm, Jewell: 29.
 Helzer, Glade: 30, 44, 51, 59.
 Henderson, Francis: 33, 38, 39, 43, 44.
 Henley, Joseph: 33, 51.
 Herndon, Robert: 33, 51.
 Hirtl, Leo: 30, 46.
 Hodge, Joseph: 33, 55.
 Hoffarth, Lucille: 30, 37, 63.
 Holtzen, Kay: 30.
 Hupp, Wilbur, Jr.: 33.
 Ingram, Nora: 30.
 Jensen, Reinhold: 30, 38, 39, 43, 46.
 Johnston, Joseph: 33, 37, 43, 50, 61.
 Jones, Beulah: 30, 39, 40, 49.
 Jones, Buster: 33, 55.
 Jones, John Wesley: 33, 55.
 Jones, Lucy Mae: 30, 39, 41, 63.
 Jones, Martha: 30, 36, 49, 63.
 Justice, Ivan: 33.
 Kennedy, Walter: 33, 51, 55.
 Kirby, William: 28, 44, 50, 61.
 Klein, Ben: 30.
 Kuddes, Ernest: 30, 38, 51, 59.
 Lane, Laurence: 30, 39.
 Lash, Leva: 31, 39, 49, 63.
 LaSauce, Bernard: 31, 38, 39.
 Leinkuehler, Virgil: 31.
 Mallman, Josephine: 31, 63.
 McChesney, Jack: 31, 50.
 McKenzie, Edwin: 33, 51, 55, 57, 58.
 McNow, John: 33.
 Mertgen, Norman: 31, 51.
 Millsaps, Muriel: 31.
 Mitchell, Janet: 31, 38, 39, 49, 63.
 Moore, Marjorie: 31, 46, 63.
 Morrison, Dorothy: 31.
 Mueller, Byron: 31.
 Nicely, Woodrow: 33.
 Nichols, Helen: 31.
 Nutting, Dana: 33, 49, 63.
 Page, Dale: 33.
 Pardee, Mary Frances: 33, 38, 63.
 Patterson, Norris: 17, 33, 55, 58, 59.
 Poehlman, Coylie: 31, 63.
 Richardson, Helen: 31.
 Robb, John: 30, 60.
 Ronchetto, Loretta: 32, 49, 63.
 Russell, Joe: 33, 55.
 Schulze, George: 33, 38, 61.
 Smith, James: 33.
 Stewart, Joan: 32, 38, 49, 63.
 Sutton, James: 32, 46.
 Tarver, Helen: 33, 39.
 Thomas, Virginia: 33.
 Thomas, Wilma: 32.
 Titterington, James: 33.
 Torbitzky, Martin: 32, 38.
 Turrentine, James: 32, 51.
 Uhery, Lee Roy: 33.
 Ward, Eldon: 33, 39, 50, 60.
 Weston, Joseph: 32, 37, 58, 61.
 Williams, O. H.: 28, 55, 60.
 Wilson, Fannice: 32, 39, 63.

ACADEMIC SPECIALS

Fisher, William: 33.
 Guthrey, John: 33, 47.
 Malcolm, Marjorie: 33.
 Harris, Roy: 33.

We Present
 Our Advertisers



Missouri Valley College

By its

President, Faculty, and Trustees

commends the student body on the record made during this school year; on the spirit of earnest effort and achievement; and on the display of loyalty and cooperation.

Together we face the future, confident the years hold for us the realization of a greater Missouri Valley.

ALPHA CAFE

Good Things to Eat and Drink



SEE TONY AT THE ALPHA

South Side Square

Telephone 214

MILK IN ABUNDANCE
PROMOTES PERFECT
HEALTH

USE

**AL'S BUTTER KRUST MILK BREAD FOR
HEALTH AND PROSPERITY**

AL'S BAKERY

PACKAGE CANDY

WHITMAN - LIGGETT

**RED CROSS
PHARMACY**

G. C. WATERS, *Proprietor*

The REXALL Store

KODAKS, PRESCRIPTIONS
SODA WATER, AMATEUR
FILM DEVELOPING

PHONE 250

Marshall, Missouri

**The Democrat News
Printing Company**

Appreciates the patronage
it has had the last year
from Missouri Valley Col-
lege and its students.

This company stands
ready at all times to serve
the college and its students
in whatever capacity its
assistance may be sought.

R. N. HAINS, *President*
R. K. HAINS, *Secretary*

Marshall, Missouri

For
SCHOOL SUPPLIES
GREETING CARDS
and GIFTS

All Roads Lead to



FISHER'S

FISHER'S BOOK & PTG. CO.

North Side Square

Phone 13

Daniel's Lumber Co.

Everything the Builder Needs

Phone 137

R. M. PHILLIPS, Manager

FROZEN GOLD

Cream of Creams

Manufactured by

Missouri Ice Cream

Company

Phone 777

MARSHALL,

MISSOURI

**RICHMAN'S
STYLE SHOP**

Ladies' Ready-to-Wear

The New Things First

East Side Square

VAN DYKE & CO.

LOANS

INSURANCE

ABSTRACTS

DEPENDABLE INSURANCE
AND INVESTMENT SERVICE

Telephone 123

Ride and Drive

The NEW FORD V-8

The Car Without a Price Class

**W. P. Thomas Motor
Company**

Frigidaire and

G. E. Refrigerators

Philco Radios

Maytag Washers, Ironers

Easy Terms

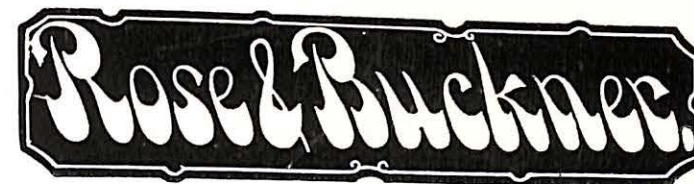
Wenzel & Jackson

111 E. North

The Same Quality For Over

50 Years

Shoes - Clothing - Furnishings - Hats



The Hansbro
Confectionery
*We Appreciate the College
Patronage*

WE DELIVER
N. Side Square Phone 1440

A. T. SWISHER
INSURANCE, LOANS, ABSTRACTS
FIDELITY BOND
Phone 209

Colvert Bros.
*Franklin County Illinois
Red Label and Imperial Coal*
TRUCK HAULING
Office Phone 89 Yard Phone 76

Merchants of Good
Appearance
Marshall Cleaners

EDDIE HANSBROUGH

EDDIE'S
HAMBURGER INN

LUNCHES, SANDWICHES,
CHILLI, STEAKS, AND GOOD
COFFEE

—Curb Service—
One Block West of Square on North Street
OPEN ALL NIGHT



Where Your Clothes Are Washed in Pure Soft Water,
Insuring Fine Work at Low Prices

56-62 W. Morgan St.

(92)

Fred Doane, Manager

*The Well Informed Prefer Ice
Refrigeration Always*
MARSHALL ICE and FUEL CO.

Dealers in Temperature
Exclusive Dealers of Sahara and Mark Twain Coal
Telephone 31

**LATIMER
GROCERY**
"Nothing Too Good to Eat"
North Side of Square
PHONE 11

*Monette
Beauty Shop*
Permanent Waving a Speciality
PHONE 164

For
Smart Ladies' Apparel
Visit

ANDERSON'S
❖
Marshall's Smartest Shop
for Women
❖

Ship Via

BROOKS TRUCK LINES
MARSHALL PHONE 423

Kansas City Depot—
BROOKS TRUCK CO.
1319 St. Louis Ave.

Phone Harrison 0500

St. Louis Depot—
MOTOR FREIGHT TERMINALS, Corp.
732 So. 7th St.

Free Pick-Up
(93)

Phone Central 0441

You have
all as my witness
to the best of
the world
of the nation

Personal Loans To Salaried People

Safety Deposit Boxes For Rent

WOOD & HUSTON BANK

Member Federal Reserve System



For those you love, consider the gift that is rich in sentiment. Your friends can buy anything you can give them, except--your photograph.

McChesney's Studio

For The Ladies
HIGH STYLE SHOES
BAGS AND HOSIERY

For The Men
HIGH STYLE SHOES
HATS AND HOSE
at

Bihr Shoe Store

EAST SIDE OF SQUARE

"Where Shoe Fitting is a Fine Art"

W. Y. Lockridge

Dr. W. L. Carter

AND—

There Goes Hatton

To A Blowout

EWELL'S INC.

Groceries, Meats, Fruits,
Vegetables.

Free Delivery

Phone 63-64 East Side Square

TONY DAVIS

Tailor

Ladies' and Men's
Suits-Made-To-Measure

Farmer's Savings Bank Bldg.

MARSHALL MISSOURI

ECONOMY CLEANERS

Eugene H. Black, Prop.
PHONE 16

*"Where Your Patronage
Is Appreciated"*

MARION ROBERTSON

*Sherwin Williams Paints
and*

Imperial Washable Wallpaper

Norman Chasnoff Inc.

106 E. Arrow

Phone 1199

Compliments of

The Bechtold Company

200-212 Pine St.

St. Louis, Mo.

SINCE 19 twenty-three.
Thirteen years!

The William Jewell Press has been printing annuals for colleges and high schools and during these thirteen years has not had a dissatisfied staff. Each year these annuals are entered in national contests and each book ranks high in its class.

The Press is able to do this because of minute attention given to the printing of these books. A trip through the plant will convince you of this.


We wish to thank the staff of this annual for its cooperation. It is through cooperation that this plant is able to print the type of annual of which you will be proud.

The Press has extended its service to the staffs of year books with a complete photographic and photo-engraving plant.

3 IN 1 *Photography*
Photo-Engraving **SERVICE**
Printing

THE WILLIAM JEWELL PRESS

HARVEY J. RAY, *Manager*
LIBERTY, MISSOURI



Burger
Baird
Engraving Co.

GRAPHIC ARTS
BUILDING
KANSAS CITY

SUSTAINED LEADERSHIP
YEAR IN AND YEAR OUT
IN DESIGNING DISTING
UISHED YEARBOOKS AND
MAKING PERFECT
PRINTING PLATES

W. J. ...
you ...
you ...
W. J. ...

AUTOGRAPHS

Melrose Gross
[unclear]

Good Luck for
the future.
Cat Cardie

AUTOGRAPHS

Dear Virginia:

I really have enjoyed knowing you this
year, because I think you are a very sweet
girl and I have really enjoyed all of the
rides in your "chev" it was fun. Always.

"Boatright"