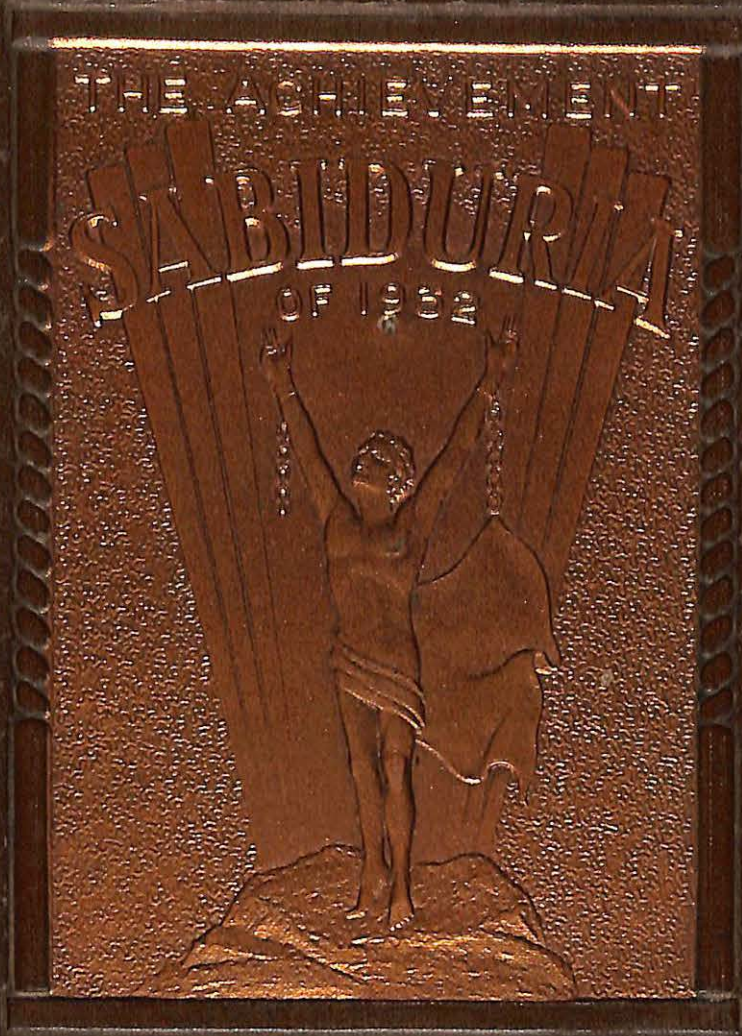


MISSOURI VALLEY COLLEGE

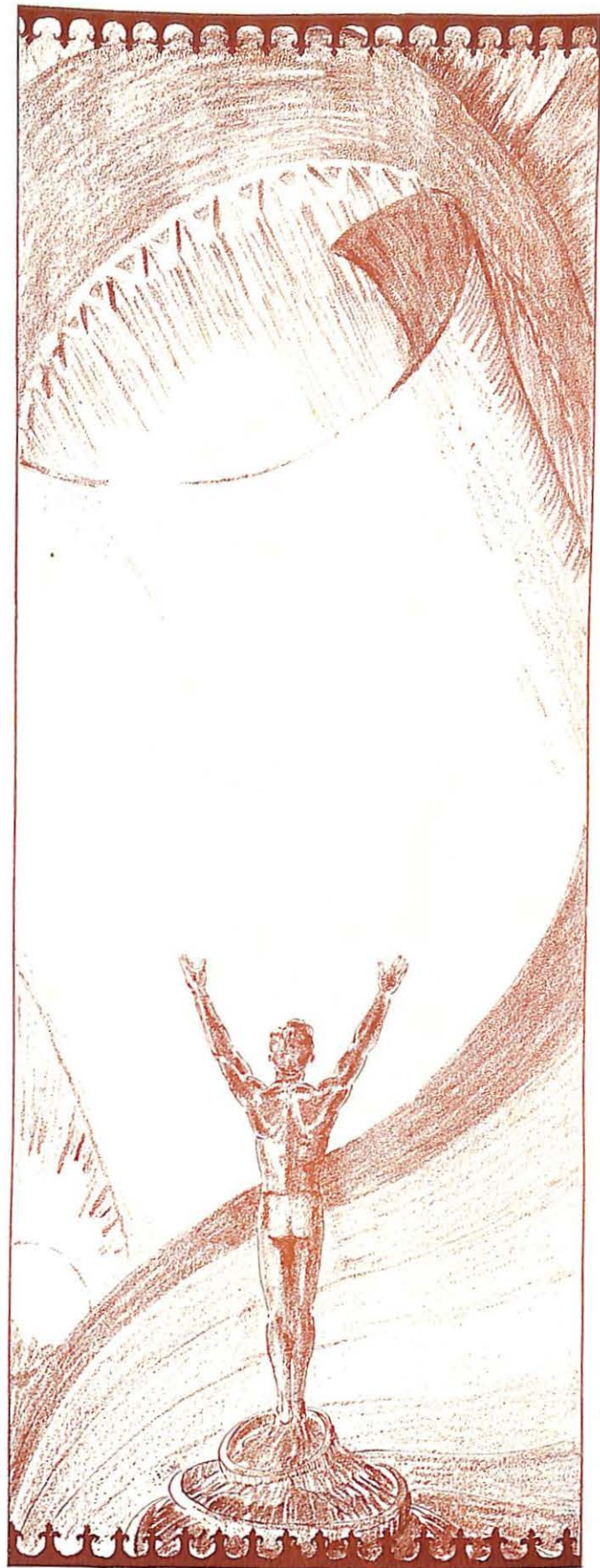


3 7010 00239647 7



Ha

The  
Sabiduria  
1932



Even as Prometheus broke the fetters which held him to the Mount of Prejudice and Ignorance, so do the students and alumni of Missouri Valley break their fetters and climb to the peak of great achievement.

The  
Achievement  
Sabiduria  
of 1932

*Published by  
the students*

*of*

Missouri Valley  
College

MARSHALL, MISSOURI



## P r e f a c e

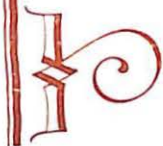
For forty-one years Missouri Valley has functioned as a College of Liberal Arts and Sciences. During those years there has been a slow, but steady advance.

In this year of nineteen hundred thirty-two, when the false and unstable things are toppling like clay idols in a rainstorm, it is appropriate that we stand on the Mount of the Present, look down the Highroad of the Past, and take special note of the lasting Achievements which Missouri Valley has made, both as a material institution, and a spiritual Alma Mater.

By thus reviewing the achievements of the past, we may be inspired to make ever greater achievements in the future.

It is in this spirit that we have entitled the 1932 yearbook,

"The Achievement Sabiduria  
of 1932"



## C o n t e n t s

- I. "OLD ETCHINGS"
- II. COLLEGE
- III. ACTIVITIES
- IV. SOCIAL ORGANIZATIONS
- V. ATHLETICS
- VI. OUR ADVERTISERS



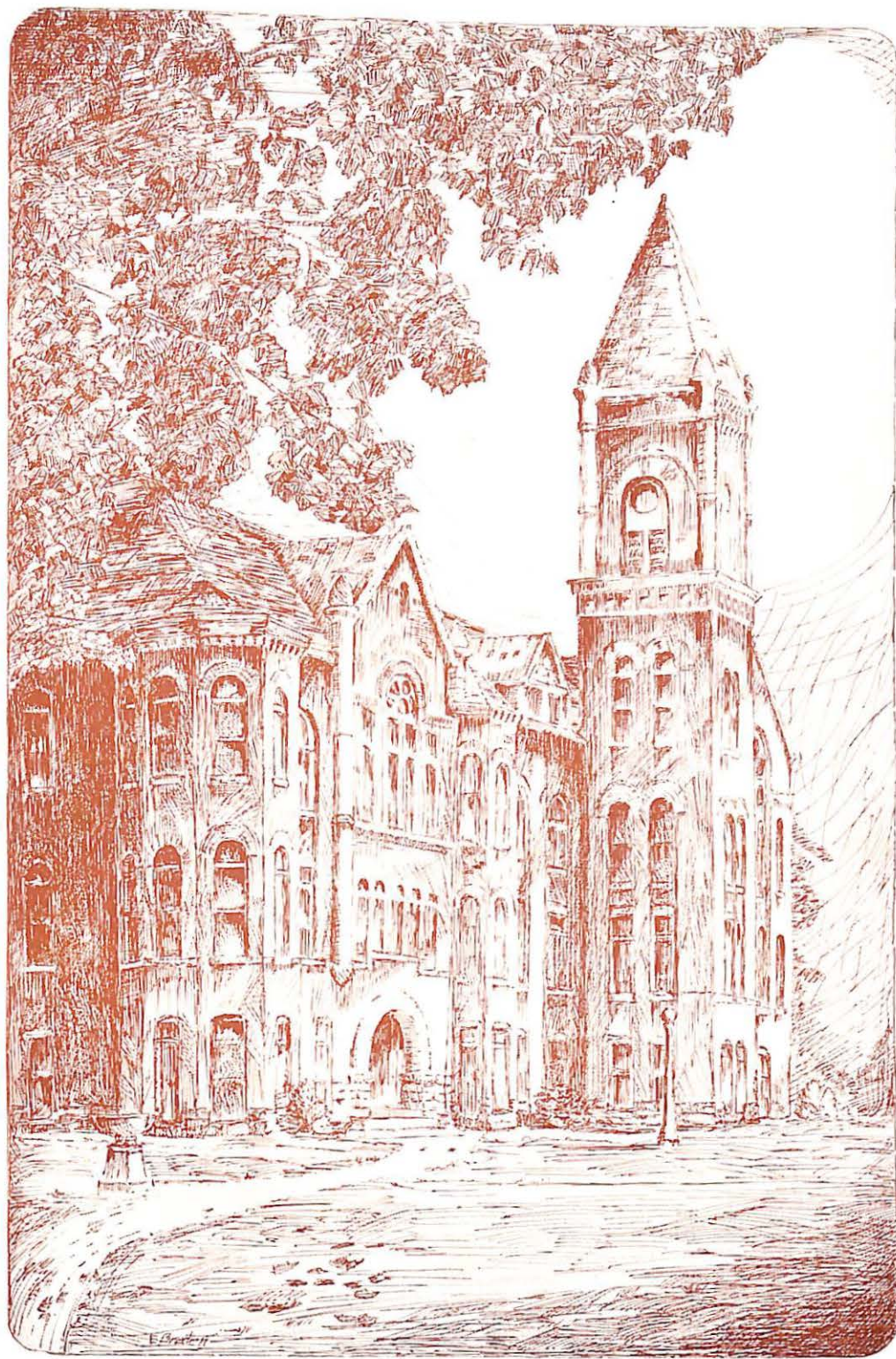


MR. CARLE B. SPOTTS

## D e d i c a t i o n

For his outstanding achievement in his work with the Forum, for his ardent support of, and interest in journalistic endeavor, and for the esteem in which he is held by the students who have become acquainted with him, both as an instructor and friend, we take pleasure in dedicating this,

The Achievement Sabiduria of 1932,  
to Mr. Carle B. Spotts.



Achievement I.

THE MAIN BUILDING



Achievement II.

STEWART CHAPEL



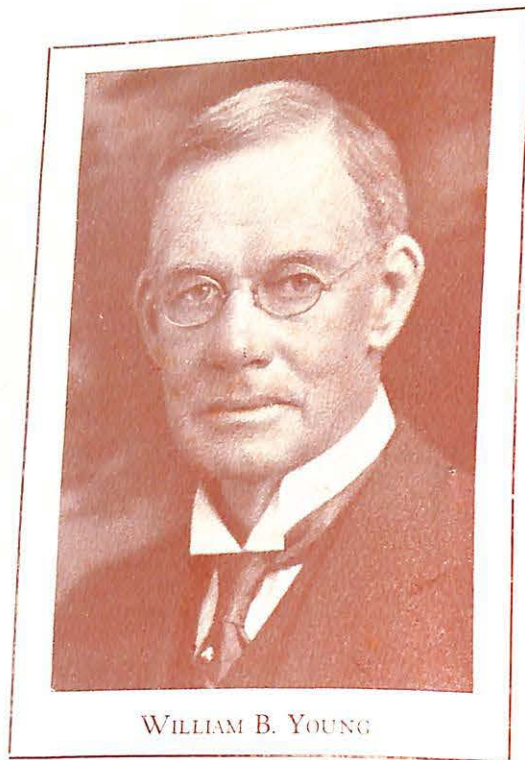
*Achievement III.*

MURRELL MEMORIAL LIBRARY



*Achievement IV.*

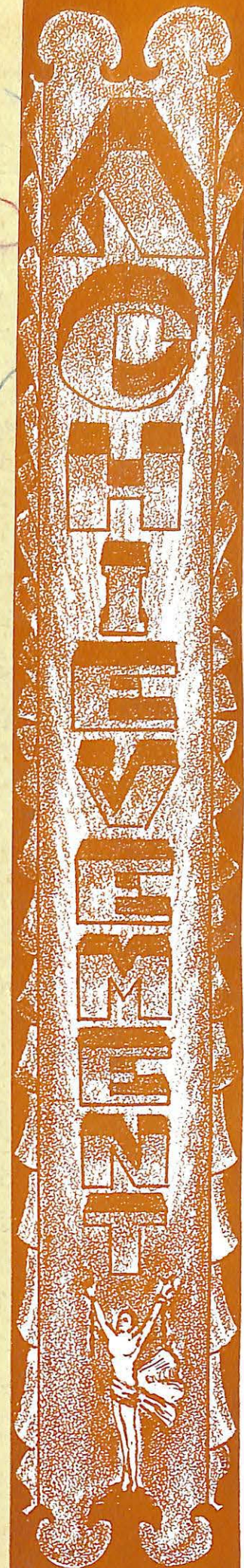
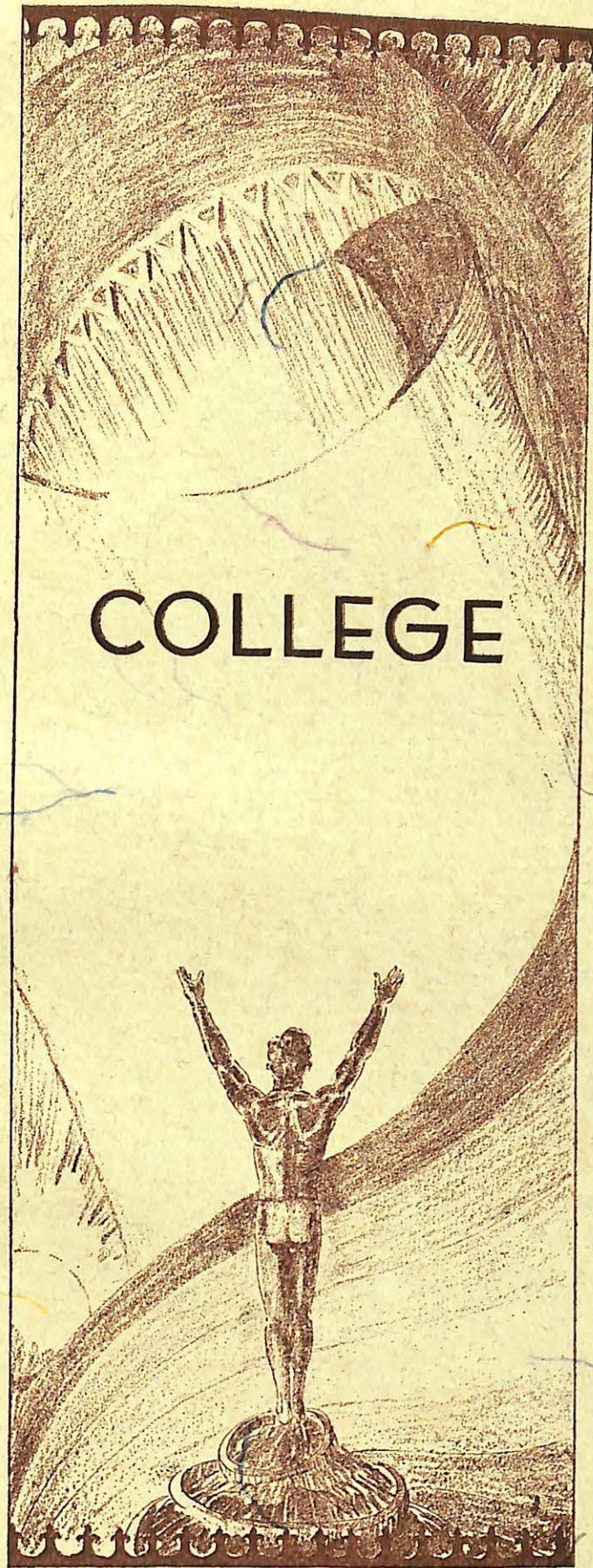
WILLIAM B. YOUNG HALL



WILLIAM B. YOUNG

### In Memoriam

ON the third of November, 1931, William B. Young left this earthly abode and entered the Great Beyond. We pause to honor his memory. His sincere spiritual interest in the college was augmented by his material support, making the dormitory which bears his name, a possibility. What more fitting memorial exists than that of an edifice erected for the purpose of encouraging the highest type of living for young manhood? Mr. Young was a man of sterling character, of keen business judgment, and one who practiced sound Christian principles. His name will ever be held in esteem as one of the benefactors of the college.



The  
A  
C  
H  
I  
L  
E  
V  
E  
M  
E  
N  
T

### The President's Message

TO a Student Body,—which this year has entered intelligently and seriously upon the process of developing a more mature, collegiate life;

To a Faculty,—which, with loyalty and enthusiasm, has shared the institution's aims and borne heavy responsibilities;

To an Alumni,—which, amid depressing conditions, responds with a generosity that reveals deep affection and faith;

To the Friends in Marshall,—who, in growing numbers are giving an intelligent and faithful support to the efforts of their college in bringing to the county high educational and cultural advantages;

To Loyal Friends everywhere,—who by prayer and gift, fill up the measure of our need;

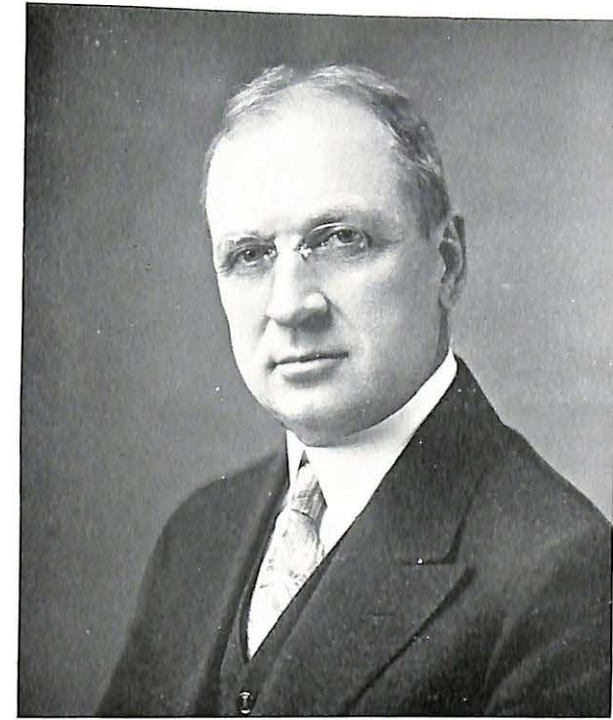
To all these, the College feels a deep gratitude as the record of the year is told.

Often a year devoid of great events or spectacular achievements is found to have been one of most significant development. Such this year will probably prove to be. Steady growth amid depression; solid gains in scholarship, campus life and traditions; and a widening circle of intelligent friends and supporters throughout the state;—these are to be set down for the school year 1931-32. Credits and honors go to all.

GEORGE H. MACK.



S  
A  
B  
I  
D  
U  
R  
I  
A  
of  
1932



GEORGE H. MACK, B.A., B.D., D.D.  
President of Missouri Valley  
College



The Deans

CLARENCE L. MILLER  
Ph.B., M.A., Ph.D.

Dean of  
Missouri Valley  
College

History and Political  
Science



HELEN B. MAY, B.A., M.A.

Dean of Women

History and  
Political Science



WILLIAM R. MITCHELL, B.A., Ph.M.,  
Ph.D.  
Registrar  
Education, Psychology



EARL PETTIJOHN, B.A., B.S., M.S.,  
Ph.D.  
Chemistry, Physics



PERCY L. JOHNSON, B.S., M.S., Ph.D.  
Biology



FORREST WESTERN, A.B., M.A.  
Physics, Pre-Engineering

The  
A  
C  
H  
I  
L  
E  
V  
E  
M  
E  
N  
T

S  
A  
B  
I  
D  
U  
R  
I  
A  
of  
1932

The  
A  
C  
H  
I  
V  
E  
M  
E  
N  
T

MISSOURI VALLEY COLLEGE



ISAAC N. EVRARD, B.A., M.A., Litt.D.  
*English, Literature*



CARLE B. SPOTTS, B.A., M.A.  
*English, Argument*



BELLE CAMPBELL HUFF, B.A., Litt.D.  
*English, History*



CLARABEL BANTA, B.E.  
*Expression, Dramatic Art*

MISSOURI VALLEY COLLEGE



WILLIAM W. MALCOLM, B.A., B.D.,  
Ph.D.  
*Biblical Literature, Philosophy*



HARRY J. JORDON, B.A., M.B.A.  
*Economics, Business Administration*



RICHARD O. HALE, B.A., M.A.  
*Classical Languages*



MADALINE ASHTON, B.A., M.A., Ph.D.  
*Modern Languages*

S  
A  
B  
I  
D  
D  
U  
R  
I  
A  
of  
1932



WILLIAM I. FERGUSON, B.A., M.A.  
Mathematics, Astronomy



MINNIE KOPF, B.A., M.A.  
Home Economics



HENRI R. GODFRIAUX, B.A.  
Physical Education



MARGORIE ROBERTSON, B.A.  
Physical Education, Hygiene



STELLA B. HICKS, M.Litt.  
Librarian



RUTH SPARKS VAWTER, B.A.  
Special Instructor in Spanish



EMMETT L. PARSONS, Ph.B.  
Executive Secretary



WYLIE F. STEEN, B.A., B.D.  
Alumni and Field Secretary

The  
A  
C  
H  
I  
V  
E  
L  
V  
E  
M  
E  
N  
T

S  
A  
B  
I  
D  
D  
U  
R  
I  
A  
A  
of  
1932



CLAUDE L. FICHTHORN, B.A., M.A.  
Dean of School of Music  
Voice, Piano, Organ



ADELINE J. C. HOWKINSON, B.A.  
Piano, Theory



ARTHUR T. VAWTER, Mus.B.  
Band and Orchestra Instruments



ETHEL DAVIS, Mus.B.  
Piano, Organ, Theory



MRS. MARY LOUISE RYAN  
Director Birchhead Maples Dormitory  
Assistant in Library



MARY K. YOST  
Secretary to the President



MARGARET STEVENSON, B.S.  
Secretary to the Deans

The  
A  
C  
H  
I  
L  
E  
V  
E  
L  
M  
A  
N  
T

S  
A  
B  
I  
D  
D  
U  
R  
I  
A  
of  
1932



### A Message from the Student Body President

THE progress made in legislative matters and in the placing of our financial condition upon a sound footing can be attributed only to the splendid assistance the Student Senate has received from the Students, Faculty, and Administration. For the confidence placed in me and for the co-operation given during my administration, I wish to sincerely thank you.

Respectfully,

J. CARSON DOWELL.



### The Student Senate

THE Student Senators have taken an enthusiastic interest in their senatorial duties, and have functioned in a manner wholly satisfactory to the student body.

Under one of the most capable student body presidents the group has carried through its objectives with a rugged determination.

Through their action, the financial condition of student organizations has been put in systematic order, and the two student publications have been required to submit financial reports.

They have inaugurated interesting student day programs and brought a more democratic atmosphere on the campus by forwarding the popular election of the student body president.

The senate itself has conducted regular bi-weekly meetings, budgeted its finances, and in every way has conducted itself in a manner worthy of commendation.

#### MEMBERS OF THE SENATE

*Seniors*  
Elston Smith  
Cecil W. Lower  
Henry Barnett

*Juniors*  
Mary Ryan  
J. Carson Dowell  
Glenn Scholle

*Sophomores*  
Robert Borberg  
John Stevenson

*Freshmen*  
Harriet Williams  
Joe Harbough

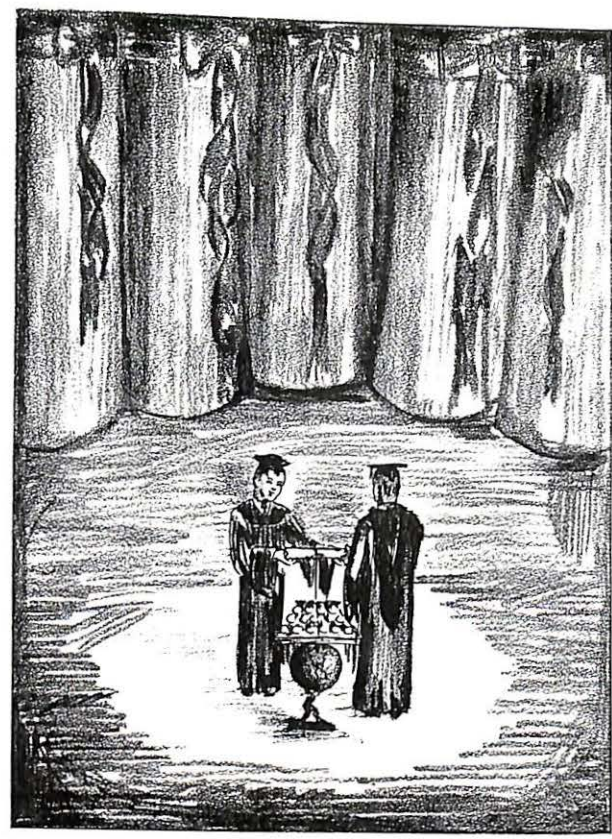
*The*  
**A  
C  
H  
I  
L  
E  
V  
E  
M  
E  
N  
T**

## Resumé of College Events 1931-32\*

(Compiled from Missouri Valley College Delta)

- No. 1. Published September 18, 1931:  
Sigma Nu grants charter to Tharsos Club.  
Friday, September 18, is Spree Day.
- No. 4. October 30, Homecoming:  
Homecomers enjoy Chapel Program, Alumni Lunch, and Harvest  
Queen Dance. Eileen Robertson crowned Queen of Harvest.
- No. 5. November 13:  
William B. Young, donor of Young Hall, died Nov. 3.  
Bohumir Kryl and his band here Nov. 20.
- No. 6. November 27:  
D. A. C. presents "The Whole Town's Talking," Thursday, Nov. 12.
- No. 7. December 11:  
Football Banquet held December 4.  
"Merchant of Venice" presented on Artists Course, Dec. 7.
- No. 8. January 15, 1932:  
Paddling out of M. C. V. Frosh Initiations.  
Tri C Club changes name to Alpha Delta Kappa on Dec. 17.  
Revival of Beta Gamma of Sigma Nu takes place, Dec. 19.  
Sigma Phi Formal held Saturday, Jan. 9.
- No. 9. February 5:  
Valkyr Informal held Jan. 30, Valentine theme.
- No. 10. February 19:  
Glee Club goes on tour, week of Feb. 14. Broadcasts over WDAF,  
Saturday, Feb. 20.  
Govind Puttiah appears on Artists Course, Friday, Feb. 5.
- No. 11. March 4:  
Kollege Sity Ball given March 5.
- No. 12. March 18:  
A. B. MacDonald is hit of Artists Course, here March 18.  
W. A. A. sponsors "The Pirate Phantasy," March 18.
- No. 13. April 1:  
Raymond H. Long elected Student Body President, Thursday,  
March 31.  
"The Fool" presented Tuesday, March 29, by D. A. C.  
Debaters rank eighth in nation at U. S. meet.
- No. 14. April 15:  
Four class trees dedicated Monday, April 11.  
Prentiss H. Case, D. D., gives magical show on Artists Course.
- No. 15. April 29:  
Informal "Dutch Dance" given by Sigma Phi, April 16.  
Valkyrs give Formal, Saturday, April 23.  
Alpha Delta Kappas give Formal, April 30.  
"E Pagliacci," sound film, last feature on Artists Course, May 5.  
Sigma Nu Fraternity give Formal Dance, May 20.  
Mary Ryan crowned Queen of the May, and Shakespeare's "As You  
Like It" presented May 13.  
May 24, Commencement.

\* See Page 124 for Sport Events.



S e n i o r s  
 Class of 1932

**S  
A  
B  
I  
D  
U  
R  
I  
A**  
*of*  
**1932**

Senior Class Officers



President  
EARL RIETH, B.A.

"Bare-headed did he run his tackles.  
Once clasped, his arms were like iron shackles."  
Tri-C: "V" Club president; Football, four years; on Missouri Union all-star teams three years, and declared captain of all-star team for '31 football season.

Vice-President  
DEMUS DAUGHERTY, B.A.  
Higbee

"He is one who goes to show,  
What one does with Cupid's bow."  
Tri-C: "V" Club; Football, four years; Basketball, '29, '30, '31; Student Discipline Committee, '31.

Secretary-Treasurer  
VIRGINIA CONNELL, B.A.  
Marshall

"Miss Connell, you have won us  
By the gracious good you've done us."  
Student Faculty Committee, '31; D.A.C., '29, '30, '31; Student Senate, '31; Sophomore Queen, '30; Vice-President Junior Class, '31; Pi Gamma Mu, '31, '32; President N.R.S., '32; Queen of May, '31.

The Class of 1932

PERHAPS the word "loyalty" has been over-used, and its true sense somewhat lost, but so long as it retains the idea of fidelity in duty, it will personify the Class of 1932. There have been few larger classes graduated during the history of the college, and even fewer classes that have contributed so largely to the progress of the institution.

May their work as individuals in whatever professions or vocations they may enter be as productive as their work as a group on the Campus.



IMOGENE AULT, B.A.

"She has that nonchalant air,  
Which always goes with  
the fair."

Dramatic Arts Club, '28,  
'29; Pi Gamma Mu, Valkyrs.

HENRY BARNETT, B.A.  
Kansas City

"It gives the boys alarm,—  
Over women he holds such  
charm."

President, Tri C, 1931;  
Chi Alpha; Pep Squad, '31,  
'32; Y. M. C. A. Cabiner;  
Dramatic Arts Club, Play,  
"The Whole Town's Talk-  
ing"; House Council Young  
Hall '31, '32; Social Com-  
mittee '31, '32; Student  
Senate '31.

VIRGINIA BLACK, B.A.  
Marshall

"Black, that's her name  
But she's true blue, just  
the same."

Y.W.C.A.; W.A.A.; De-  
bate Forum '32; N.R.S.A.

E. IRVING BRADEN, B.A.  
St. Louis

Chi Alpha Officer '30, '31,  
'32; Oratorical Contest '30;  
Y. M. C. A. Cabiner, '31;  
D.A.C. Cast: "The Queen's  
Husband"; "Midsummer  
Night's Dream"; Stage  
Manager, "The Fool";  
Sigma Nu; Editorial Writ-  
er, The Delta '31; Cartoo-  
nist, The Delta '31; Art Ed-  
itor, The Sabiduria '29, '30,  
'31; Associate Editor, The  
Sabiduria, '31; Editor-in-  
chief, '32; Special Initiation  
Committee, '32; Decorations,  
Harvest Queen Dance; Stu-  
dent Pastor, '31; Debate, '31.

EVA FRANCES BARNDTS,  
B.A.  
Marshall

"With her disposition  
She'll surely get position."

W.A.A.; Y.W.C.A.; D.  
A. C. Cast "Midsummer  
Night's Dream"; Make-up  
for "The Pirate Phantasy"  
'32; Cast "As You Like It."

M. P. BELL, JR., B.A.  
Marshall

"Calm, serene, a little shy,  
But still water runs deep,  
And silence is on high."

Alpha Delta Kappa;  
Dramatic Arts Club, Cast,  
"The Fool"; "The Queen's  
Husband"; Track '30, '31, '32.

ADOLPHUS F. BORBERG,  
B.S. in Ed.  
Marshall

"Now this boy a violin can  
play,  
He'll be a great musician,  
some day."

Orchestra '26, '27, '28, '29,  
'30, '32; Glee Club '28, '30;  
D.A.C. Cast "The Fool".

J. CHAPMAN BRADLEY,  
B.A.  
Carthage

"If Chapman goes, and  
Chapman drives,  
Please be sure to insure  
your lives."

Student Senate '29, Men's  
Glee Club '29, '30, '31, Tenor  
Soloist, '29, '30, '31; D.A.C.  
'29, '30, President '31; As-  
sociate Editor, Sabiduria,  
'29, Editor-in-chief '30; Chi  
Alpha Club '29, '30, Deacon  
'31; Tharsos '29, '30, Secre-  
tary '31; Sigma Nu '32,  
Secretary '32; Chairman,  
Program Committee for  
Homecoming Party, '31;  
Student Pastor, Atlanta,  
Mo., '30; Student Pastor,  
Carrollton, '31; Member Spe-  
cial Initiation Committee,  
'32.

The  
A  
C  
H  
I  
V  
E  
M  
E  
N  
T

S  
A  
B  
I  
D  
U  
R  
I  
A  
of  
1932

The  
A  
C  
H  
I  
V  
E  
M  
E  
N  
T

JANICE REID, Mus.B.  
Marshall

"Here's a girl that'll make her mark.  
For her voice is as a lark."

Christian College, '29, '30; Glee Club, '31, '32; Vice-President, '32; Quartet, '32; Soloist, '31, '32; Y.W.C.A.; N. R. S. A.; Senior Class Queen.

NANABEL ROSS, B.A.  
Weston

"If French you should e'er contemplate,  
Confer with her 'fore it's too late."

House President, '30, '31; W. S. G. A., '30, '31; House Council, '31; Y. W. C. A.; W.A.A.

ELSTON K. SMITH, B.A.  
Corder

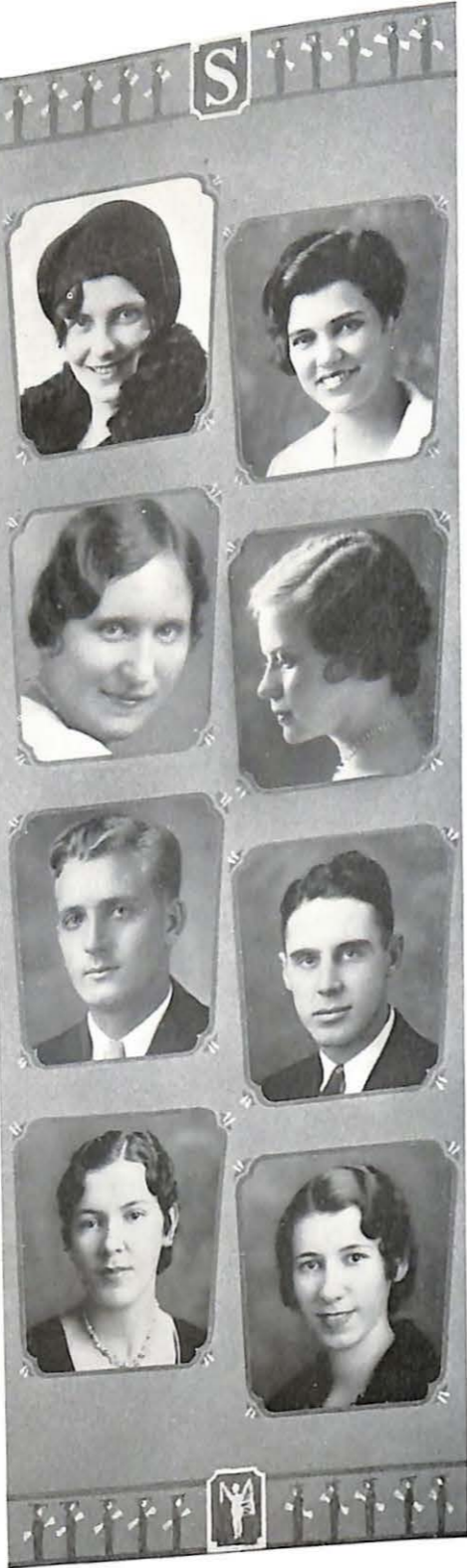
"Handsome as a god that's Grecian,  
But always uses good discretion."

Sigma Nu President, Social Chairman Tharsos, '30, '31; D. A. C., '30, '31, '32; Glee Club, '29, '30, '31, '32; Social Chairman Student Body, '31, '32; Student Senate, '31, '32; Vice-President Student Body, '31, '32; Student Faculty Committee, '32; Student Discipline Committee, '31; Football, '30; Vested Choir, '29, '30.

CORRINE STAUB, B.A.  
Marshall

"In Stephens and Missouri she did matriculate,  
But came to Missouri Valley, here to graduate."

Stephens College, '28, '29; University of Missouri, '30, '31.



EILEEN ROBERTSON, B.S.  
Yates

"On the campus, loud proclaimed  
'Queen of Harvest', —  
rightly named."

Glee Club, '29, '30, '31, President, '32; "M" Club, W.A.A. Sports Manager, '32; Sigma Phi President, '32; W. S. G. A. President, '32; D.A.C., House Council, '31; Y.W.C.A.; Harvest Queen, '31.

DORIS SMITH, B.A.  
Sweet Springs

"Her wit is sparkling, her voice so sweet,  
To talk to her's indeed a treat."

Glee Club, '28, '29, '31; Valkyr, D.A.C., '28, '29, '30; Y.W.C.A. Cabinet, '29, '30; House Secretary-Treasurer, '30; House President, '31; W. S. G. A., Council, '31; Pep Squad.

SUMMERS STANFIELD, B.A.  
Marshall

"Courteous manners, generous soul,  
With one other Senior,  
his life is whole."

Alpha Delta Kappa.

RUTH STAUB, B.S.  
Marshall

"With jolly air, and witty mind,  
Success for her will not be hard to find."

Stephens College, '29, '30; Missouri University, '31; Sigma Phi.

S  
A  
B  
I  
D  
U  
R  
I  
A  
of  
1932

R. WILSON BROWN, B.A.  
B.J. from U. of Missouri  
Mexico

"Stirs up more than he can settle,  
But how many others have that much mettle."

Editor Delta, '29, '30, '31; President Missouri College Newspaper Association, '30; Vice-President, '31; State Winner in Feature and Special Column Writing, '30, '31; First in News, '31; First in Delta, '30; Glee Club, '29, '30, '31, Accompanist, '31; Quartette, '29; Church Organist, '30; Mikado Cast, '29; Cat-O-Nine, '30; Tharsos, '31; Historian, '29; Student Faculty Committee, '31; M.A., '29, '30, '31; Y. W. C. A., U. of Missouri Glee Club, '31; University Circus, '32; Sigma Phi.

MARY CONNOR, B.A.

Mary Conner, not a student, will not carry a school name.

WILLIAM STANFIELD, B.A.

William Stanfield, C. College, '29.

RICH DAWKINS, B.S.  
Chilli

"You may look this whole year over  
and not find one who can eat more."

SECRETARY RADIO CLUB, '30, '31; Secretary Radio Club, '31, '32; "The Thirteenth Chair."

HARRY T. EDWARDS, B.A.  
Slater

"Of the Delta was he editor,  
Now he's fit to be a metador."

Park College, '29; Sports Editor, Delta, '30; Associate Editor, Delta, '31; Editor Delta, '32; Tharsos Club, '31; Sigma Nu, '32; Student Faculty Committee; Glee Club, '31, '32.



VIRGINIA BUIE, B.A.  
Marshall

"Now Buie is a girl quite nice,  
But it's hard to break the ice."

N. R. S. A.; Y. W. C. A.; Costumes: "As You Like It."

RUTH COULTER, B.S.  
Kansas City

"She's smart as she can be,  
But she has other interests, you see."

K. C. Junior College; Sabiduria Staff, '29, '30; House Secretary-Treasurer, '29; House Head Proctor, '30; Pep Squad, '32; Valkyr, '32.

EVA MAE DOUGHTY, A.B.  
Marshall

"A brilliant student, we cannot doubt,  
She makes us dumb ones fret and pout."

Pi Gamma Mu.

JOHN ELDER, B.S.  
Miami

"Of old John we are justly proud,  
He stands out in any crowd."

"V" Club; Athletic Editor for Sabiduria, '32; Football Letterman, '30, '31; Tharsos Club, '31; Sigma Nu, '32; House Council, '30, '31; Delta Staff; Pi Gamma Mu, '32.

*9 Harry old  
I believe I made a  
few acquaintances  
I have been here that  
live in and long for  
I shall long for  
also the big  
I received at your home  
last year in the big  
belonged to  
your friend  
Dan*

The  
A  
C  
H  
I  
V  
E  
L  
M  
E  
N  
T

MISSOURI VALLEY COLLEGE

NANCY JANE ENTREKIN,  
B.S.  
Slater

"Of wit and pep, she has  
a lot,  
That's enough,—eh what?"

Glee Club, Central Col-  
lege; Valkyr, '31,'32; Jun-  
ior Class Queen, '31.



CLEMENTINE GENZ, A.B.  
Louisiana

"There is one who's a peck  
of fun,  
When she starts, the  
mirth's begun."

Valkyr, President, '31;  
W.S.G.A.; Pi Gamma Mu;  
House President, '30,'31,'32.

BROWN HAMER, Ph.B.  
Marshall

"He deals in things bio-  
logical,  
But his Ford is diabolical."

Alpha Delta Kappa; As-  
sistant Biologist, '30, '31,  
'32.

ROBERT LAPSLEY HOY,  
B.A.  
Marshall

"To Columbia to study law  
he went,  
Of Freshman Law they  
made him President."

Tharsos, '28,'29,'30; Sig-  
ma Nu, '32; D.A.C. Cast:  
"The Mikado"; "A Pair of  
Sixes"; "A Lucky Break";  
"The Queen's Husband";  
Men's Glee Club, '28,'29,  
'30; Quartette, '28,'29,'30;  
Student Senate, '29,'30;  
President, Freshman Law  
Class at Missouri Univer-  
sity.

HAROLD E. FINLEY, B.S.  
Bosworth

"Quiet and reserved is he,  
More grave, than given to  
jollity."

Vice-President, Radio  
Club, '31, '32; Orchestra,  
'28, '29; Band, '28, '29;  
Y. M. C. A.

MRS. SYLVIA GEORGE,  
B.A.  
Marshall

"Quite a student she is in-  
deed,  
Has all the information  
teachers need."

Lindenwood, '29,'30; Sum-  
mer Kansas University, '31;  
Pi Gamma Mu; D. A. C.;  
Tennis Champion K. U.  
and Lindenwood.

T. VERN HOPKINS, B.A.  
Hickman Mills

"Just are his decisions, and  
right brief,  
'Say what you think',  
That's his belief."

Pi Gamma Mu, '32; Foot-  
ball, '28,'29,'30,'31, '31;  
Club; Glee Club, '32; Sigma  
Nu; D.A.C. Cast: "The  
Fool", "Lucky Break."

G. AUBREY JETER, B.A.  
Slater

"Here is one whose bound  
to go far,  
He has hitched his wagon  
to a star."

Football, '28,'29; Base-  
ball, '29; D. A. C. Cast:  
"Mikado", '30; Sigma Nu;  
Student Discipline Com-  
mittee, '31, '32; Student  
Faculty Committee, '31;  
House Council, '31, '32;  
Glee Club, '29,'30,'31,'32;  
Business Manager, '32;  
Quartette, '31, '32; Y. M.  
C.A. Cabinet, '32; Pi Gam-  
ma Mu, '32; Debate, '31;  
Vested Choir, '28, '29;  
Town Choir.

MISSOURI VALLEY COLLEGE

S  
A  
B  
I  
D  
U  
R  
I  
A  
of  
1932

EMILY KRUGER, B.A.  
Marshall

"Modest is this lady, and  
right sweet,  
Full well she will every-  
body treat."

Art Club at C.M.S.T.C.,  
'29,'30; Foreign Language  
Club C.M.S.T.C.; D.A.C.  
"Canaries".

CECIL W. LOWER, B.A.  
Houstonia

"Although he's short in  
physical length,  
He is long in argumental  
strength."

Student Senate '30,'31,'32;  
President, Student Body,  
'31; President, Forum, '29,  
'30,'31,'32; President Thar-  
sos, '29; D.A.C.; President,  
Y. M. C. A., '32; Associate  
Editor Delta, '30; Pi Gam-  
ma Mu, President, '32;  
President Young Hall, '32;  
Sigma Nu, Lieutenant  
Commander, '32.

BERNICE MERRELL, B.A.  
Joplin

"The whole town's talk-  
ing, she directed,  
And we think a real suc-  
cess effected."

Assistant in Public Speak-  
ing Department, '31; Dir-  
ector "The Whole Town's  
Talking"; D.A.C.

RUTH OGDEN, B.S.  
Kansas City

"She is a girl with real  
talent,  
And toward success she's  
surely bent."

D.A.C. '31,'32; Y.W.C.A.  
'30,'31,'32; Glee Club, '30,  
'31,'32; Girls Quartette, '31,  
'32; Cabinet Y.W., '31,'32;  
Student Counselor, '31,'32;  
House Council, '31.



ROBERT LANDRUM, B.A.  
Webb City

"Few there are who have  
his talents many,  
Yet not one bit boastful  
is he of any."

Glee Club, '29,'30,'31,'32;  
Quartette, '29,'30,'31,'32;  
Tenor Soloist, '29,'32;  
Tharsos Senator; Cheer  
Leader, '30; D.A.C. "Mika-  
do"; "Cat-O-Nine Tails";  
"The Thirteenth Chair";  
"As You Like It"; Band,  
Orchestra; Sophomore  
Treasurer; Baseball, '29;  
Vested Choir, '28,'29; Pres-  
ident of Senior Class, '32.

FRANCES MARTIN, B.A.  
Biloxi, Mississippi

"Here's a girl that's always  
jolly,  
She's no 'problem' in 'Psy-  
choly'."

Cumberland University,  
'28,'29; Chicago University,  
'29,'30; Vice-President Sig-  
ma Delta Sigma, '28,'29;  
Associate Editor of Cum-  
berland Kickoff '28,'29;  
Y.W.C.A., '31,'32; Glee  
Club; Mistress of Ward-  
robe D.A.C., '31,'32.

ERNEST O'DONNELL,  
B.S.  
Marshall

"He plays indeed a royal  
part,  
Within his breast beats a  
loyal heart."

Band, four years; Or-  
chestra, four years; Radio  
Club, '32.

ISABEL ORR, B.A.  
Webster Groves

"Generous, kind, and quite  
demure,  
Just the type to make a  
world tour."

Assistant Librarian.

The

ACADEMICALS

MISSOURI VALLEY COLLEGE

DONALD SWEENEY, B.A.  
Marshall

"Here's a man that's after  
'learnin'  
For no credit took he a  
term in,  
That hard language called  
the German."

Band, '29, '30, '31, '32; Or-  
chestra, '29, '30, '31, '32;  
Radio Club, '32.



FRED J. TWILLING, B.A.  
Marshall

"Here's a man, sincere and  
true,  
He'd almost anything do  
for you.

Football, '25, '27, '30, '31.

ROBERT VAN WINKLE,  
Ph.B.  
Marshall

"Both as captain and as  
Viking,  
For his 'Mater' was he  
fighting."

Football, '27, '28, '29, '30,  
Captain Football, '30; Track,  
'27, '28, '29, '30, Captain  
Track, '30; "V" Club.



GEORGIE WALK, B.A.  
Blue Lick

"She worked hard and  
what's the sequel?  
Fine high grades that few  
can equal."

D.A.C.; Pi Gamma Mu;  
Orchestra; N.R.S.A.

VIRGINIA WHEELER, B.A.  
Waverly

"She liked whate'er she  
looked on,  
And her looks went every-  
where."

—Browning.



CLIFTON WILCOX, B.A.  
Odessa

"He is one that plays foot-  
ball,  
But that, of course, is  
not all.

Football, '30, '31; Treasur-  
er Junior Class, '30; Alpha  
Kappa Delta.

MILAN W. WILLIAMS,  
B.A.  
Marshall

"Although he is left handed,  
He'll not in life be left  
stranded."

"V" Club, Football, '28,  
'29, '30, '31; Basketball, '32;  
Track, '29, '30, '31, '32.



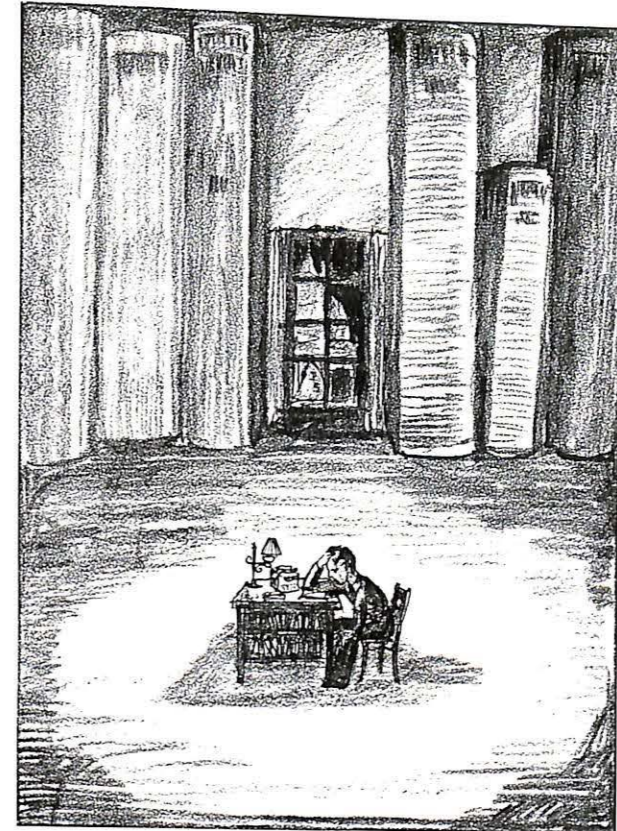
GEORGE WINDSOR, B.S.  
Windsor

"Prophet, seer, and star  
gazer,  
If Pep is dead, by George,  
he'll raise her!"

President Pep Squad;  
Tri-C Pledge Master, Al-  
pha Delta Kappa; D.A.C.  
Stage Manager.



MISSOURI VALLEY COLLEGE



Juniors  
Class of 1933

SABIDURIA of 1932

may the heat of life's furnace be pure,  
I wish you happiness and may  
possess all spirit to carry out  
Thirty-eight  
your mission.

The  
A  
C  
H  
I  
L  
E  
V  
E  
M  
E  
N  
T



Junior Class Officers

HAROLD J. BERNING  
Carrollton  
President of the  
Class of 1933

RAYMOND H. LONG  
Armstrong  
Vice-President of the  
Class of 1933

JOSEPHINE EVANS  
Carthage  
Secretary-Treasurer of the  
Class of 1933

The Class of 1933

THIS year, the good ship "Junior" has sailed even farther out upon the Sea of Scholasticism, and has returned with her coffer filled with Gems of Wisdom.

According to the Log, the storm of Depression was finally out-riden, and on further perusal, we find that several successes were made by the members of the Crew: the Queen of the May was selected from the group; five members served on the Sabiduria Staff, including the Business Manager; six appeared in the Women's Glee Club; two on the Men's Glee Club, one of whom was a member of the Quartette; eight football men and the captain for next year, two basketball men, one of whom is the captain for next year, and the student body president for next year, as well as the one for this year, all hail from this class.

S  
A  
B  
I  
D  
U  
R  
I  
A  
of  
1932



LAWRENCE ASHWORTH  
Hamilton

CATHERINE BAKER  
Marshall

FRANCES HELEN BOUND  
Nevada

MRS. F. P. BREWSTER  
Marshall

JAMES R. DOUGHERTY  
Marshall

MAURICE DOUGHTY  
Marshall

J. CARSON DOWELL  
Vandalia

HELEN LOUISE FERGUSON  
Warsaw

The

A  
C  
H  
I  
L  
L  
V  
E  
L  
M  
E  
N  
T

A  
C  
H  
I  
L  
L  
V  
E  
L  
M  
E  
N  
T

A  
C  
H  
I  
L  
V  
E  
L  
M  
E  
N  
T

A  
C  
H  
I  
L  
V  
E  
L  
M  
E  
N  
T

A  
C  
H  
I  
L  
V  
E  
L  
M  
E  
N  
T

A  
C  
H  
I  
L  
V  
E  
L  
M  
E  
N  
T

A  
C  
H  
I  
L  
V  
E  
L  
M  
E  
N  
T

A  
C  
H  
I  
L  
V  
E  
L  
M  
E  
N  
T

MISSOURI VALLEY COLLEGE



JOHN R. GOSNEY  
Kansas City

HUBERT D. HINTON  
Marshall

MRS. PAULINE JORDON  
Marshall

CHARLENE LAWLESS  
Marshall

ADA E. GWINNER  
Atlanta

MARY BURTON JONES  
Marshall

CHARLES A. KIENBERGER  
Rich Hill

CHRISTINE LEIMBROCK  
Gilliam

MISSOURI VALLEY COLLEGE



HOWARD LILE  
Marshall

MARGIE YOWELL  
Marshall

ROY MURRAY  
Kansas City

ARTHUR OLIVE  
Carthage

DAVIDSON McDOWELL  
Dearborn

MARJORIE MILLER  
Blackburn

BASH NICHOLS  
Blackwater

JEAN PERRY  
Marshall

S

A

B

I

D

U

R

I

A

of  
1932

2

The  
A  
C  
H  
I  
L  
E  
V  
E  
L  
M  
E  
N  
T

S  
A  
B  
I  
D  
U  
R  
I  
A  
of  
1932



FRANK L. REARICK  
Garden City

LOUIS RITTERBUSCH  
Slater

LEON RUMANS  
Marshall

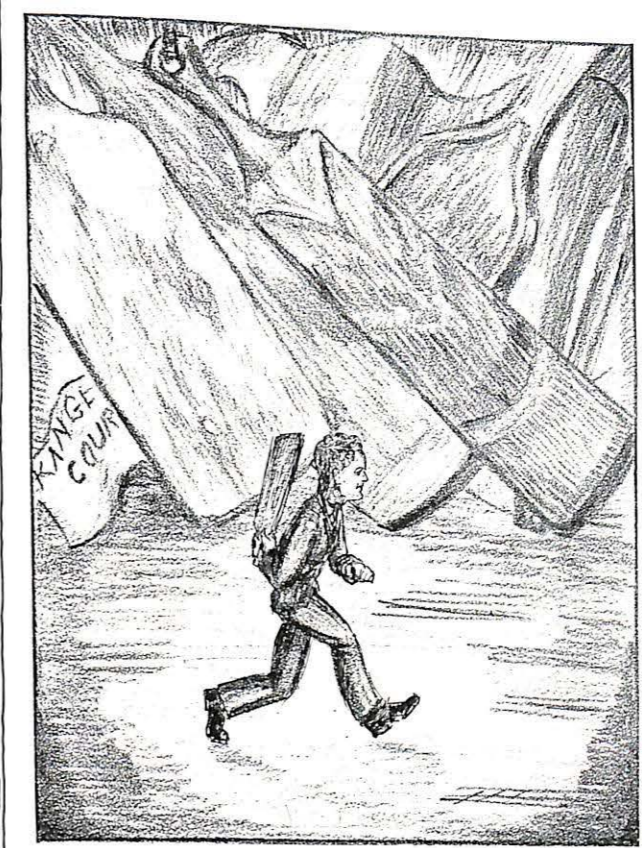
MARY RYAN  
Marshall

CHARLOTTE RYLAND  
Gillette, Wyo.

GLENN SCHOLLE  
Carrollton

GEORGE SMITH  
Marshall

VIRGINIA SPICER  
Marshall



Sophomores  
Class of 1934

Sophomore Class Officers



WILLIS McDOWELL  
Odessa  
President of the  
Class of 1934

VIRGINIA BARLOW  
Neosho  
Vice-President of the  
Class of 1934

JOHN W. CONDON  
Corder  
Secretary-Treasurer of the  
Class of 1934

*Many old fellows -  
I wish you had  
is the best  
our swap Sunday  
you are a fine fellow  
wish you the best of luck in life.  
I'll always be your friend.  
Johnny*

The Class of 1934

DURING a moment of serious contemplation the officers named above were elected, and during another moment of esthetic reflection Virginia Barlow became Queen of the Sophomore Class. On examination of the Ship's records, we find that the Storm of Depression played havoc with the good ship "Sophomore", and washed overboard ten of its members, but a crew of fifty-five remains to tell the tale. It reports the following achievements:

Number Participating

Five  
Three  
Seven  
Eight  
Five  
Two  
Four  
Two

Organization

Delta Staff  
Forum  
D. A. C.  
Men's Glee Club  
Football Squad  
Basketball Team  
W. A. A.  
Sabiduria Staff

ELSA BALDUS  
Sweet Springs

JIM BERRY  
Bentonville, Ark.

JOHN S. BILLINGS  
Delta, Utah

AUDREY BLACK  
Marshall

ROBERT L. BORBERG  
Union

ALLEN BROWN  
Slater

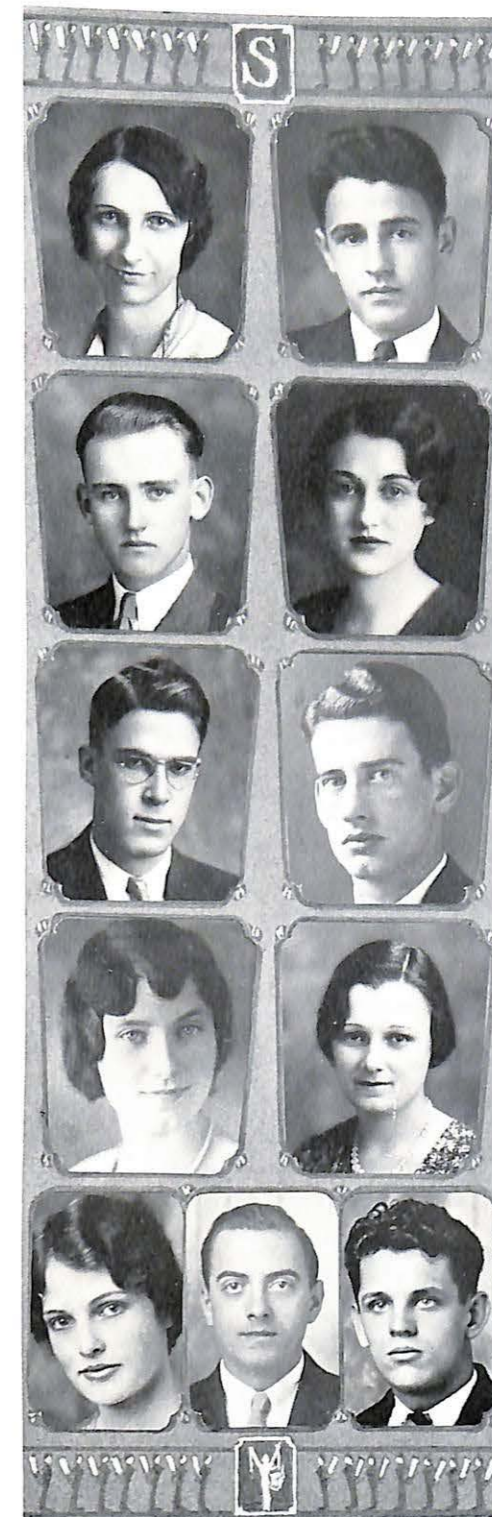
CORA VELMA BROWNFIELD  
Pilot Grove

EDNA BROWNING  
Avalon

CLARABEL CHAMBERLIN  
Boonville

CHARLES E. CLARK  
Marshall

LOUIS J. COMASCHI  
Kansas City



The  
A  
C  
H  
I  
V  
E  
M  
E  
N  
T

MISSOURI VALLEY COLLEGE

*Don't deny  
you're a  
college  
graduate  
you're  
a  
graduate  
of  
Missouri  
Valley  
College*



ROBERT DREDGE  
Laclede

ROBERT M. DUNN  
Marshall

JOSEPHINE EDWARDS  
Slater

IRVIN ELLISON  
Los Angeles, California

*Happy  
Best wishes  
to  
Helen Gabelman  
Webster Groves  
for  
a  
Happy  
Friend  
Mary M. Gooch*

HELEN GABELMAN  
Webster Groves

MARY M. GOOCH  
Meadville

JOHN GUTHREY  
Marshall

RUTH HENDON  
Marshall

MAXINE HICKLIN  
Slater

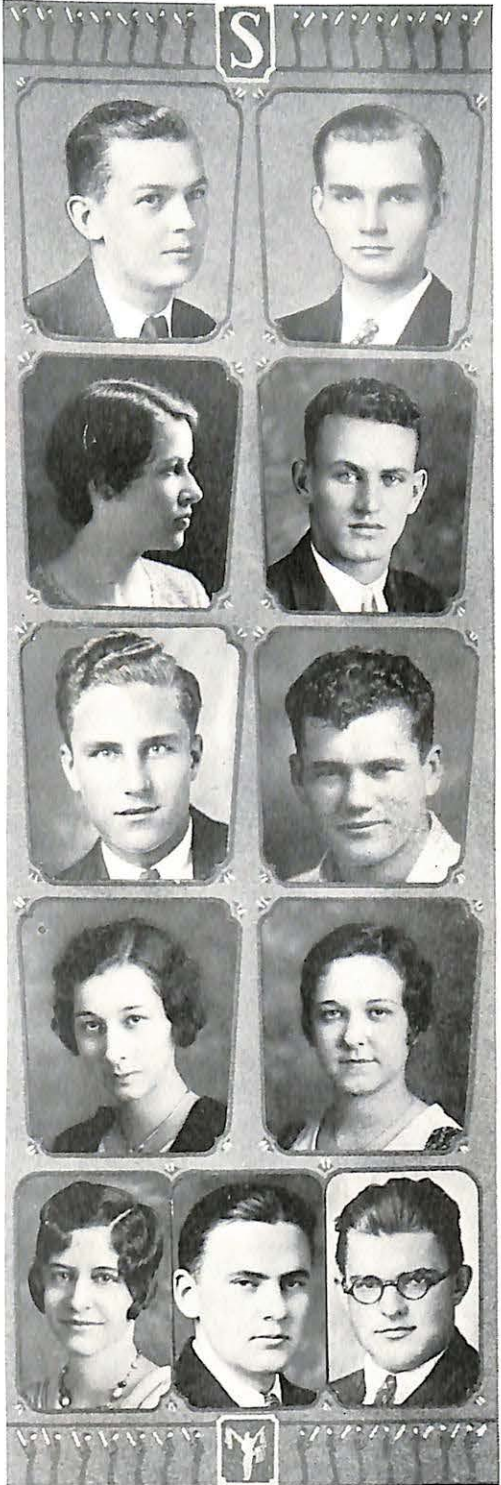
ELIZABETH HIXSON  
Webster Groves

DOROTHY HOLSTEEN  
West Point, Iowa

*See page  
137*

MISSOURI VALLEY COLLEGE

*with all the respect  
and admiration could have for its  
to wish you the best of luck  
and many happy returns  
Hampson*



HAROLD HUMPHREY  
Independence

JOHN KIMUTIS  
East St. Louis, Illinois

JULIA LAUTHER  
Madison, Iowa

EVERETTE MARKLAND  
Armstrong

MAX H. MCCUITION  
Hardin, Iowa

CHARLES MITCHELL  
Temple, Texas

MARGARET MITCHELL  
Marshall

VONCEILL MORRISON  
Carrollton

MARGARET MURRAY  
Marshall

BRADLEY OFFUTT  
Mexico

WALTER E. PARKS  
Marshall

S  
A  
B  
I  
D  
U  
R  
I  
A  
of  
1932

The

A  
C  
H  
I  
V  
E  
M  
E  
N  
T

MISSOURI VALLEY COLLEGE



FRANK PETTIT  
Springfield

SCOTT ROBINSON  
Marshall

KRUSOR ROSS  
Weston

LLOYD M. SCOTT  
Weston

VIRGINIA SHERLOCK  
Kansas City

ROBERT L. SIMS  
Harrison, Arkansas

CHARLES SPARKS  
Kansas City

JOHNNY STEVENSON  
Carlos, Indiana

LEONA STOENNER  
Levasy

ROBERT SUTTON  
Marshall

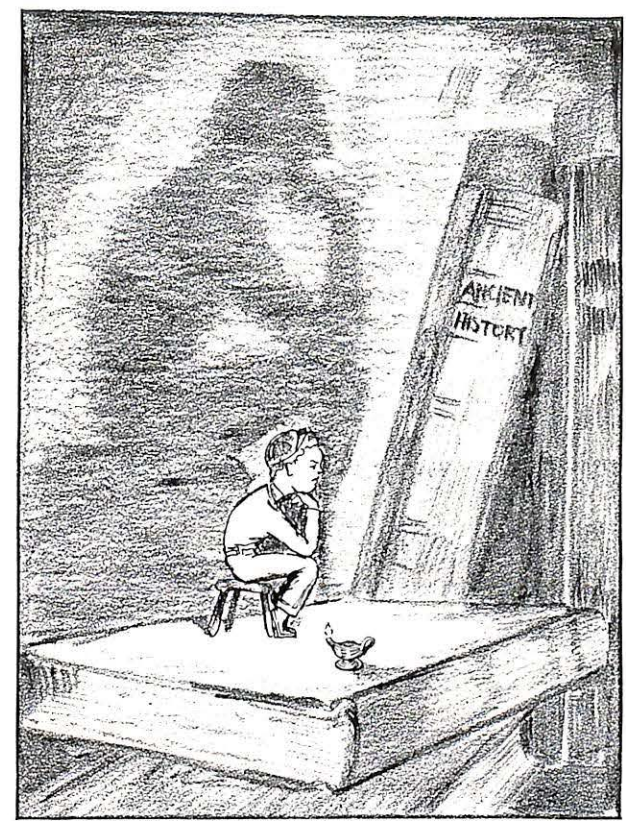
MILDRED TITTERINGTON  
Marshall

Dear Harry:  
Knowing you has  
been a pleasure, and being  
your friend a greater one.  
Luck be with in all you  
do. Always remember that  
you got your start at MVC  
and in ΣϕΔ. Robert Sutton

*Handwritten notes in blue ink:*  
I hope you will be a very  
successful one because of  
the way you are now  
I hope you will be a  
great success.

*Handwritten note:*  
page 126.

MISSOURI VALLEY COLLEGE



F r e s h m e n  
Class of 1935

S  
A  
B  
I  
D  
U  
R  
I  
A  
of  
1932

The  
A  
C  
H  
I  
L  
E  
V  
E  
L  
M  
E  
N  
T



Freshmen Class Officers

PETE REA  
Marshall  
President of the  
Class of 1935

CLAUDE F. RATLIFF  
Webb City  
Vice-President of the  
Class of 1935

MARY BERRY  
Bentonville, Arkansas  
Secretary-Treasurer of the  
Class of 1935

The Class of 1935

UNDOUBTEDLY the largest ship in our Viking Fleet is the Good ship "Freshman", with a crew numbering one hundred and three. Of course, the crew was a little bit immature, but the lack of experience was made up by its over-abundance of self confidence.

After having a good deal of trouble getting under way from the Harbor of High School, they finally raised anchor and hove off. Their main difficulty seemed to be in the matter of following the course of Tradition, and often found themselves in "spanking" breezes, or in faculty whirlpools, but the latest report is that they have found the Course, and will try their best to keep on it.

Besides making one of the neatest Football Banners, this group has further displayed its loyalty by heartily entering into every activity on the campus.

The class will go down in history as the last to suffer the awful terrors of "The Paddle", the use of which has been prohibited since their initiation.

S  
A  
B  
I  
D  
U  
R  
I  
A  
of  
1935



FERN AHLF  
Marshall

JANE AIKIN  
Kansas City

CLYDE AMSLER  
Marshall

ESTHER AULT  
Carterville

HELEN BOEGER  
Morrison

DOROTHEA BOONE  
Wichita Falls, Texas

HAROLD C. BROWN  
Brookfield

ROXIE BROWN  
Odessa

J. ROGER BUCK  
Marshall

MAHLON BULLOCK  
Kansas City

WILMA BUXTON  
Ransom, Kansas

RAYMOND CAMPBELL  
Kansas City

VIRGINIA CATON  
Mt. Leonard

FRANCES CLINE  
Appleton City

LELAJEAN COLEMAN  
Kansas City

ROY COOPER  
Springfield

CHARLES SIMPSON  
Kansas City

LULU MAE DIERKING  
Sweet Springs

KATHERINE DIGGES  
Glasgow

DEAN DUGGINS  
Marshall

JOHN DUGGINS  
Marshall

The

ACADEMIC

MISSOURI VALLEY COLLEGE



RALPH DUGGINS  
Marshall  
A. HAMNER EDMONDS  
Miami  
LYLE EPPS  
Harrisonville

TREVA ESKEW  
Marshall  
RICHARD FREEMAN  
Carrollton  
ROBERT E. GARNETT  
Slater

CHARLES GERHARDT  
Speed  
ROY GERHARDT  
Speed  
FRANCES GORE  
Marshall

JOHN KEITH GOODWIN  
Marshall  
MATILDA GREGERSON  
Gillette, Wyoming  
RANDALL HAINS  
Marshall

JOE HARBOUGH  
Kansas City  
FRANCES HARPER  
Butler  
BRIGGS HARRIMAN  
Sedalia

CARL C. HEUMANN  
Blackwater  
LAUREL V. HICKLIN  
Slater  
NOAH HUMPHREYS  
Marshall

JOHN IRVINE  
Marshall  
A. B. JACKSON, JR.  
Jefferson City  
CRANELLEE JENKINS  
Beaman

*Here's best wishes to one of the  
young fellows of the 1st floor  
you. Although I have not known  
you so long, I have enjoyed  
and I hope you have enjoyed  
of luck and success in  
the future.  
Always your friend  
Jenkins*

Fifty-four

MISSOURI VALLEY COLLEGE

*My dear Henry -  
had for many years  
living. To see you  
you just  
I the  
writing  
I hope  
I hope  
I hope*



ROBERT M. JOHNSON  
Augusta, Illinois  
MAE DELL KIDWELL  
Slater  
GEORGIANA KIRKPATRICK  
Memphis

REBECCA KNOWLTON  
Eldorado Springs  
GEORGE E. LARUE  
Marshall  
S. EDGAR LAUTHER  
Fort Madison, Iowa

J. W. LENTZ  
Marshall  
WRIGHT G. LLOYD  
Marshall  
DAVID LOGAN  
Dearborn

MARJORIE MALCOLM  
Marshall  
ORVILLE MCCOLLUM  
Brookfield  
J. GEORGE MOORE  
Marshall

JOSEPHINE MOORE  
Memphis  
OVERLY MYERS  
Kansas City  
LENA MAE NEFF  
Slater

JOE NICHOLS  
Blackwater  
BETTY PETTIJOHN  
Marshall  
MARGERY L. PHIPPS  
Marshall

L. ALLEN PLUMB  
Harrisonville  
MARGARET RAMEY  
Higginsville  
DOROTHY REID  
Marshall

Fifty-five

SABIDURIA of 1932

The

A  
C  
H  
I  
L  
E  
V  
E  
M  
E  
N  
T

MISSOURI VALLEY COLLEGE



EUGENE REIDENBACH  
Slater

ROBERT RILEY  
Sedalia

MARGARET ROBERTSON  
Greenfield

ELVYRIA SCHUSTER  
Levasy

ROBERT H. SCOTT  
Nelson

LARKIN SLUSHER  
Waverly

WESLEY STEELE  
Sedalia

JAMES STERNER  
Mexico

ELIZABETH STEWART  
Carthage

WAYNE TERRELL  
Malta Bend

BUTLER THOMAS  
Corder

KITTY SUE THOMPSON  
Marshall

MARGARET TOBIN  
Marshall

JESSIE TURLEY  
Marshall

ARTHUR VOGELSMIEER  
Sweet Springs

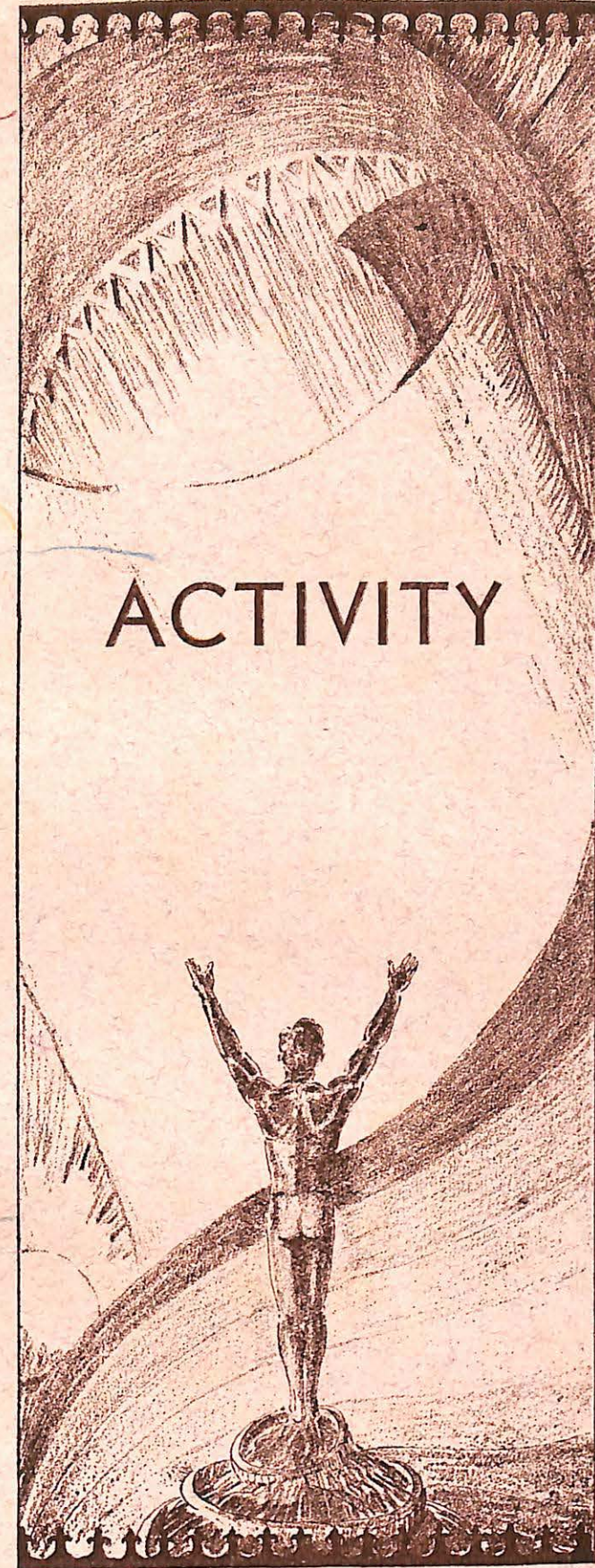
ROSE WELCH  
Chillicothe

FLOYD WILLIAMS  
Kansas City

HARRIET WILLIAMS  
Carthage

ELIZABETH WINN  
Marshall

GEORGE H. YATES  
Yates



A  
C  
H  
I  
L  
E  
V  
E  
M  
E  
N  
T



E. IRVING BRADEN  
Editor-in-Chief



GLENN SCHOLLE  
Business Manager

THE Sabiduria Staff wishes to thank the Student Body for its co-operation in the production of this year's Sabiduria. Everyone that was asked to help responded loyally, and we appreciate that response.

We trust that we have been successful in catching the Spirit of Missouri Valley within these pages, and that the bird's eye view we have given of the events on the campus will serve to recall a few of the pleasant hours that have come and gone during the year 1931-32 on the "Forty Acres".

### The Achievement Sabiduria of 1932

### The Staff of the Achievement Sabiduria of 1932

- |                            |                  |
|----------------------------|------------------|
| Associate Editor           | JOE NICHOLS      |
| Assistant Editor           | FRANCES CLINE    |
| Campus Life Editor         | JOHN R. GOSNEY   |
| Columnist                  | ELIZABETH HIXSON |
| Lines, Written and Drawn   | HAROLD HUMPHREY  |
| Characaturist              | "TEX" MITCHELL   |
| Snap Shot Editor           | HARRIET WILLIAMS |
| Sports Editor              | JOHN ELDER       |
| Activities Editor          | ARTHUR OLIVE     |
| Assistant Business Manager | ALLEN BROWN      |
| Junior Section Editor      | CHARLOTTE RYLAND |
| Sophomore Section Editor   | JEAN PERRY       |
| Freshman Section Editor    | ROXIE BROWN      |

*you've been chosen profession. Joe*



Joe Nichols, John Gosney, John Elder, Mary Ryan, Charlotte Ryland  
Harriet Williams, Charles Mitchell, Arthur Olive, Jean Perry, Roxy Brown  
Harold Humphrey, Frances Cline, Margaret Ramey, Allen Brown  
Elizabeth Hixson

A  
C  
H  
I  
E  
V  
E  
M  
E  
N  
T

S  
A  
B  
I  
D  
U  
R  
I  
A  
of  
1  
9  
3  
2

The



HARRY T. EDWARDS  
Editor-in-Chief The Delta

JAMES STERNER  
Business Manager The Delta

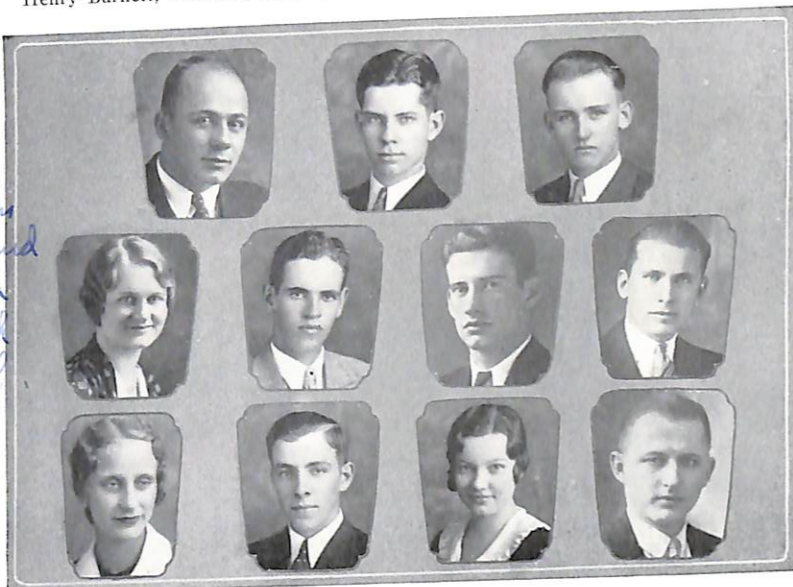
THE Delta is the official organ of the Student Body. During the past year the aim of the editor and his staff has been to chronicle all of the news of the college, student body, and alumni; to reflect student opinion; and to work for the greatest good of the student body as a whole.

THE STAFF OF THE DELTA

Editor-in-Chief . . . . . Harry T. Edwards	Editorial Editor . . . . . John Billings
Business Manager . . . . . James E. Sterner	Alumni Contributor . . . Margaret Stevenson
News Editor . . . . . A. Hamner Edmonds	Asst. Advertising Mgr. . . S. Edgar Lauther
Associate Editor and	Asst. Circulation Mgr. . . . . Allen Brown
Sports Editor . . . . . Harold J. Berning	Faculty Sponsor . . . . . Pro. C. B. Spotts

STAFF ASSISTANTS

Henry Barnett, Elizabeth Hixson, Elizabeth Winn, Robert Johnson, Dan Morong



H. Berning,	H. Edmonds,	J. Billings	H. Barnett
M. Stevenson,	E. Lauther,	A. Brown,	
E. Winn,	R. Johnson,	E. Hixson,	Professor Spotts



Back Row: Robert Borberg, Virginia Black, Robert Sutton, Audrey Black, John Irvine  
 Front Row: Robert Johnson, John Billings, Cecil W. Lower, James E. Sterner  
 Professor Spotts, J. Roger Buck

The Forum

THE Forum, during the season just closed, finished four years of excellent debating with a banner record for Missouri Valley forensics. Under the fourth year of Professor Carle B. Spotts' direction and the fourth year of President Cecil W. Lower's leadership, the group won twenty of twenty-nine intercollegiate debates. Only seven times were they defeated, with two non-decision contests.

With their record, they this year took the championship of the Missouri College Union, placed eighth in the national Pi Kappa Delta convention at Tulsa, and for the first time entered a national meet at Winfield, Kansas.

VICTORIES

Springfield (Mo.) Teachers.  
 Bethany (Kans.) College  
 Alva (Okla.) College  
 Texas Christian University  
 Pittsburgh (Kans.) Teachers  
 Central College  
 Bethany (Kans.) College  
 Westminster College.  
 Westminster College.  
 Central College.  
 William Jewell College.  
 Central College.  
 Central College.  
 Baldwin-Wallace (Ohio) College.  
 College of Idaho.  
 Henderson (Ark.) State.  
 Weatherford (Okla.) Teachers.  
 St. Thomas (Minn.) College.  
 Central College.

DEFEATS

William Jewell College.  
 Southwestern (Kans.) College.  
 Baylor University.  
 Springfield (Mo.) Teachers.  
 Edmonds (Okla.) University.  
 Millsaps (Miss.) College.  
 Nebraska Wesleyan.

NON-DECISION

Kemper Military School.  
 Kemper Military School.

VOTE TOTALS

Missouri Valley . . . . .	29
Opponents . . . . .	11

*Harry - you have been a sandy editor and I hope to see you keep on writing. I'm for you too, hard wishing you all of the luck in the world. You Pal! Ed.*

ACADEMIC

SEABUILDERS of 1932



MISS CLARABEL BANTA  
Sponsor of the Dramatic Arts Club,  
and  
Director of Dramatic Productions

## The Dramatic Arts Club

THE D. A. C. has had an active and successful year. Besides producing three major plays, it has added to its physical equipment by the purchase of a beautiful Monk's Cloth curtain for the stage in Stewart Chapel.

Under the revised constitution, membership in the club is based upon the fulfillment of certain qualifications in actual dramatic work. In this way those only who are capable of dramatic work, or who can materially assist in other matters of stage craft are admitted into the club.

Both Miss Bernice Merrell, and Miss Clarabel Banta, directors for first and second semesters, respectively, are to be highly commended for their excellent direction of the productions.

### OFFICERS

President  
Vice-President  
Secretary  
Treasurer

CHAPMAN BRADLEY  
JOHN BILLINGS  
MARGARET MITCHELL  
HELEN GABELMAN



M. MALCOLM, H. GABELMAN, H. BARNETT, J. GOODWIN, E. WINN, J. GUTHREY, A. OLIVE

## "The Whole Town's Talking"

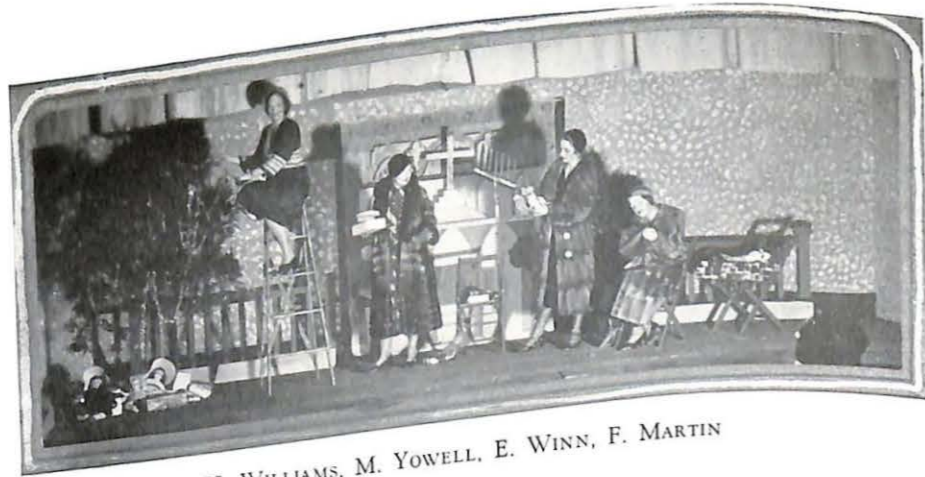
A Comedy in 3 Acts

THE first play given this school year was on November 12, entitled "The Whole Town's Talking," a clever farce dealing with the problem of making a hickish, small-town, business man get "reputation" enough to attract his partner's daughter. The play was excellently directed by Miss Merrell, and was especially noteworthy in that each person of the cast was thoroughly familiar with his part.

### DRAMATIS PERSONAE

Henry Simmons  
Harriet Simmons  
Ethel Simmons  
Chester Binney  
Letty Lythe  
Donald Swift  
Roger Shields  
Lila Wilson  
Sally Otis  
Annie  
Sadie Bloom  
Taxi Driver

Arthur Olive  
Helen Gabelman  
Marjorie Malcolm  
John Guthrey  
Elizabeth Winn  
Henry Barnett  
John K. Goodwin  
Margaret Tobin  
Rebecca Knowlton  
Harriet Williams  
Rosemary Yowell  
Hamner Edmonds



H. WILLIAMS, M. YOWELL, E. WINN, F. MARTIN

## "The Fool"

By Channing Pollock

A Play in Four Acts

THIS play, presented March 29, 1932, was of a religio-dramatic nature and was the most difficult play attempted during the season. In the course of the play, a devout clergyman attempts to live a life like that of Christ. He loses his church and becomes a social worker, but his kindnesses are misunderstood and he is mobbed by a group of jealous men. Success finally crowns his efforts to walk "in His steps".

### THE CAST

Mrs. Henry Gilliam	..... Margie Yowell	A Servant	..... Claude Ratliff
Mrs. Thornbury	..... Elizabeth Winn	Max Stedman	..... Robert Riley
"Dilly" Gilliam	..... Harriet Williams	Joe Hennig	..... Vern Hopkins
Dr. Barnaby	..... M. P. Bell	Umanski	..... Joseph Harbough
Mrs. Tice	..... Frances Martin	"Grubby"	..... Harold Brown
"Jerry" Goodkind	..... Richard Freeman	Mack	..... Adolphus Borberg
Rev. Everett Wadham	..... John Gosney	Mary Margaret	..... Margaret Tobin
Clare Jewett	..... Virginia Sherlock	Pearl Hennig	..... Rebecca Knowlton
George F. Goodkind	..... Chapman Bradley	Miss Levinson	..... Margaret Mitchell
"Charlie" Benfield	..... Raymond Campbell	Mrs. Henchly	..... Elizabeth Stewart
Daniel Gilchrist	..... Walter Myers	Mr. Henchly	..... Raymond Campbell
A Poor Man	..... Raymond Campbell	Tony Malduca	..... Charles Simpson

## Shakespeare's "As You Like It"

The third production of the year will be Shakespeare's "As You Like It". This annual goes to press before the actual presentation, but we feel confident that under Miss Clarabel Banta's capable direction, the play will be of outstanding merit and beauty. This will be the second annual presentation of a Shakespearian play on the occasion of the May Fete. These are outdoor productions.



Back Row: Winn, Brownfield, Gabelman, Perry, Violin Soloist, J. Reid, Soprano Soloist  
Miss Howkinson, Director, E. Robertson  
Middle Row: Martin, Ogden, Leimbrock, Ryland, M. Robertson, D. Reid, Evans  
Front Row: Vineyard, Bound, Gwinner, Tobin, Smith, Hicklin

## Women's Glee Club

ALTHOUGH the Club did not have the good fortune of making an extensive trip, it has had an excellent year. It has given several concerts in and around Marshall.

Under Miss Howkinson's direction, the club gave evidence of excellent training. Attack and enunciation was remarkably accurate, and there was unusual volume.

There were two quartettes, one consisting of Janice Reid, Dorothy Reid, Margaret Tobin, and Elizabeth Winn, and the other of Ruth Ogden, Josephine Evans, Helen Frances Bound, and Charlotte Ryland.

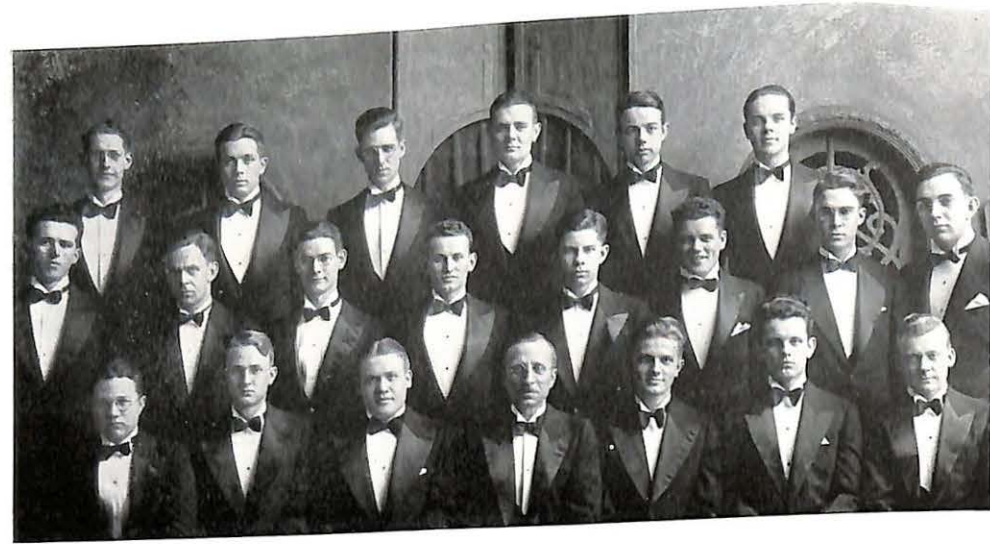
The  
A  
C  
H  
I  
V  
E  
M  
E  
N  
T

S  
A  
B  
B  
I  
D  
U  
R  
I  
A  
of  
1932

The

A  
C  
H  
I  
L  
E  
V  
E  
M  
E  
N  
T

# MISSOURI VALLEY COLLEGE

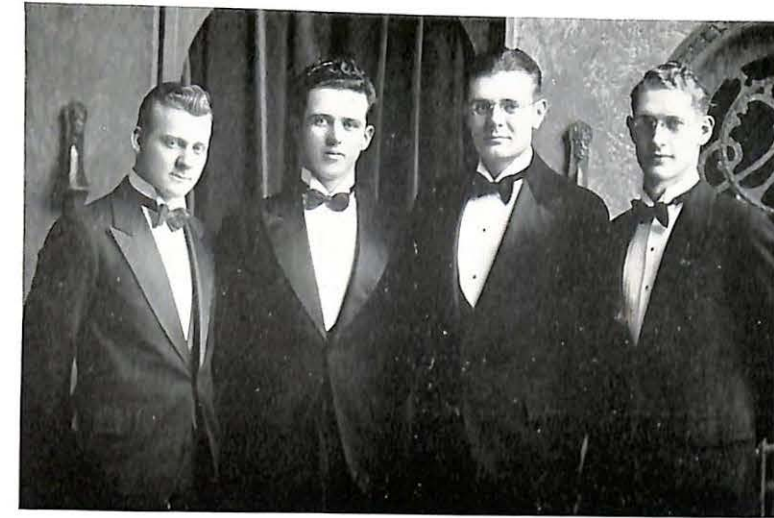


Back Row: Robert B. Landrum, Tenor Soloist, Harry T. Edwards, Floyd Williams, Claude Ratliff, Raymond Campbell, Baritone Soloist, Davidson McDowell, Cornet Soloist, J. W. Lentz, Reader  
 Second Row: G. Aubrey Jeter, Manager and Bass Soloist, Charles Mitchell, Robert Borberg, Arthur Olive, Donald Sweeney, Everett Markland, Hamner Edmonds  
 Front Row: J. K. Goodwin, James Runkle, Walter Myers, Chapman Bradley, John Gosney, Dean Fichthorn, Director, Louis Comaschi

## The Men's Glee Club

IN spite of the depression, and on account of the persistent endeavors of Manager G. Aubrey Jeter, the Glee Club had a fine trip through the southern part of the state. Music critics pronounced the club one of the finest, and Dean Fichthorn deserves much credit for his excellent directing. The twenty-two men gave twenty-three concerts on the trip, and appeared on WDAF radio program in March. Over forty concerts were given during the season.

# MISSOURI VALLEY COLLEGE



CHAPMAN BRADLEY ROBERT LANDRUM  
 G. AUBREY JETER DAVIDSON McDOWELL

## The Men's Quartette

First Tenor ROBERT B. LANDRUM  
 Second Tenor CHAPMAN BRADLEY  
 First Bass DAVIDSON McDOWELL  
 Second Bass G. AUBREY JETER

THE Men's Quarette has likewise had a successful and busy season. The four voices blend excellently, and each man "puts himself across" to his audience. Incidentally, their ability to "bring down the house" with their jokes and antics is proverbial.

Harry Jeremiah Alphonse Jeremiah Uriah Edwards  
 Will it all over and no job. This  
 finish college but will still be E N  
 brother and keep in touch that way. All  
 probably come to visit you and Mrs. E N sister  
 and the further little E. N. be all serious  
 nice though. Harry you are one of the  
 just fellows I have ever known and  
 certainly cherish our friendship. May  
 be best be yours always.  
 Fraternally  
 G. Aubrey Jeter

S  
A  
B  
I  
D  
U  
R  
I  
A

of  
1  
9  
3  
2

The

A  
C  
H  
I  
V  
E  
M  
E  
N  
T

# MISSOURI VALLEY COLLEGE



Top Row: Gooch, Mitchell, Ratliff, Gerhardt, Mitchell, Perry, Simpson, Landrum, Emerson, Jones  
Bullock, Logan, O'Donnell, Borberg, Ryland, Amsler, McDowell, Brown, Sweeney, Prof. Vawter  
Front Row: Knowlton, Emerson, Holsteen, Ross, Walk, Cline, Vinyard, Staub

## ORCHESTRA

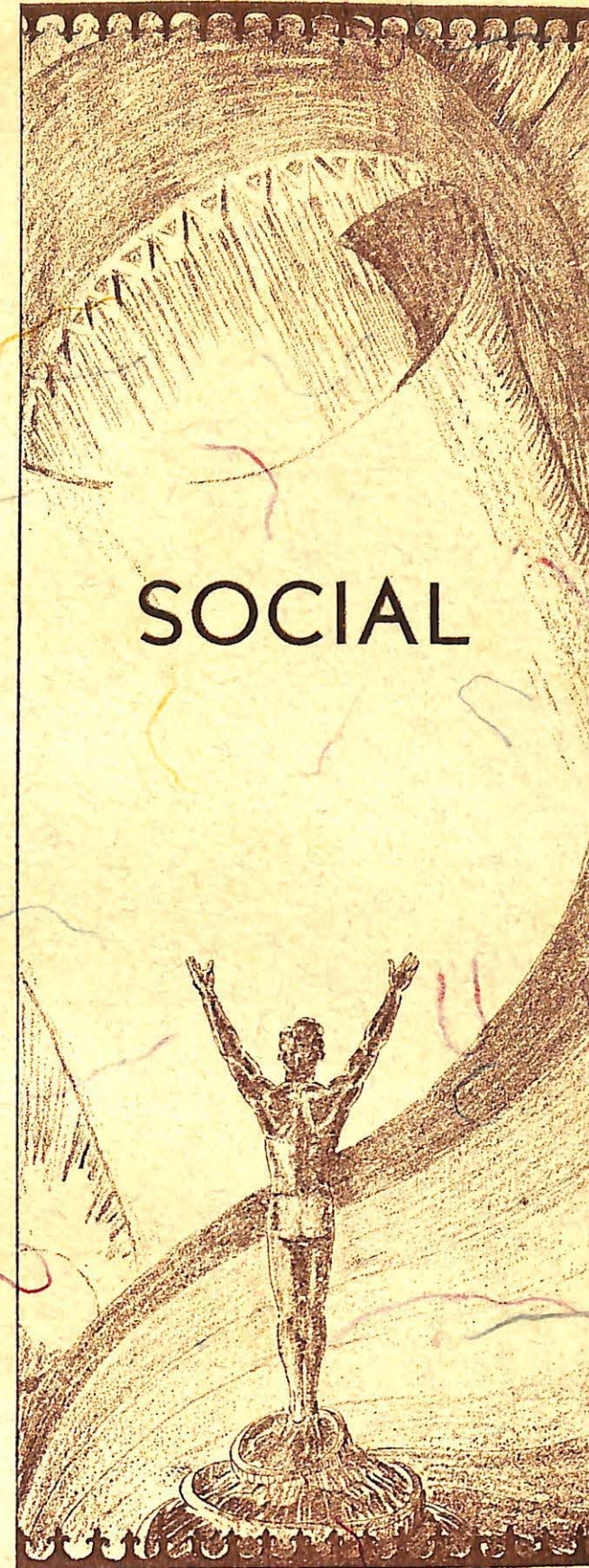
THE Orchestra is one organization that gives of its best for the entertainment of the student body. We have yet to see the time when this modest group does not win hearty applause for its fine chapel programs under Mr. Vawter's direction.

## THE BAND

Braving the elements, good or bad, to lead the student body in pep songs,—that is the duty of the Band, and well do they fulfill it! In appreciation of that loyalty, the student body voted this year to buy the uniforms which they proudly display in the lower picture.



Top Row: Goodwin, Bullock, Logan, Landrum, McDowell, Brown, Sweeney  
Middle Row: Mitchell, Emerson, Ross, Jones, Knowlton, Amsler  
Bottom Row: O'Donnell, Gooch, Ryland, Emerson, Mitchell, Holsteen, Prof. Vawter



A  
C  
H  
I  
V  
E  
M  
E  
N  
T

## The Valkyrs

THE Valkyrs originated from a pep club called Zoorieites, established in 1922. The transition to the present name came in 1924. The name "Valkyrs" was chosen from the Nordic mythology, and means "Companion to the Viking."

In the autumn of 1930 the Club, upon the advice of the administration and the wishes of the girls themselves, went social.

The first president of the club was Mrs. "Blue Eyes" Bellwood Pinkston. Succeeding presidents have been: Mrs. Ruby Osbery Pickering, Mrs. Dot Hyland Schooley, Miss Frances Lou Fletcher, Miss Helen Mahr, Miss Clementine Genz, and the office is now held by Miss Mary Ryan.

The basic ideals of the club are the fostering of scholarship, loyalty, and friendship, so that all members may be a symphony of helpfulness and high purpose.

### OFFICERS OF THE SORORITY

President	MARY RYAN
Vice-President	ELIZABETH HIXSON
Secretary-Treasurer	HELEN GABELMAN
Sponsor	MISS MARGARET STEVENSON



H. Gabelman, D. Smith, I. Ault, V. Barlow, N. Entrekin, C. Genz  
E. Hixon, E. Ault, M. Berry, R. Brown, R. Coulter, G. Kirkpatrick  
M. Ryan, M. Phipps, K. Thompson, D. Reid, R. Welch, M. Malcolm, J. Moore, E. Winn



E. Robertson, C. Leimbrock, H. Ferguson, V. Sherlock, C. Lawless, A. Gwinner  
J. Lauther, J. Edwards, J. Evans, D. Holsteen, K. Baker, J. Perry  
R. Hendon, H. Williams, R. Knowlton, R. Staub, K. Digges, M. Robertson

## Sigma Phi

THE Sigma Phi Sorority was organized by a small group of girls September 5, 1930. This group grew to have a membership of twenty girls, with Miss Fern Nave as president. Miss Eileen Robertson succeeded Miss Nave in the fall of '31.

In Mrs. C. L. Miller and Miss Madeline Ashton, the club finds two excellent co-sponsors, who have contributed much toward the success of the organization.

Social functions, including the annual formal and informal dances, a "Dutch" party, and picnics have been enjoyed by the members and their guests.

### OFFICERS OF THE SORORITY

President	EILEEN ROBERTSON
Vice-President	CHRISTINE LEIMBROCK
Secretary	HELEN LOUISE FERGUSON
Treasurer	VIRGINIA SHERLOCK
Social Chairman	JOSEPHINE EDWARDS

The  
A  
C  
H  
I  
L  
E  
V  
E  
M  
E  
N  
T

S  
A  
B  
I  
D  
U  
R  
I  
A  
of  
1932

# Sigma Nu

UNDOUBTEDLY this year will stand out as a keystone in the foundation of the Sigma Nu Fraternity on the campus of Missouri Valley, for it marks the revival of Beta Gamma Chapter, whose original charter was granted in 1891, forty-one years ago. For thirty-five years the Chapter had been inactive.

A fraternity composed entirely of pledges!—thus the Sigma Nu's existed on the campus from November 23, to December 19, 1931, due to the fact that the Tharsos Club was automatically dissolved as the group was pledged to Sigma Nu.

On December 19, amid a gorgeous ritual, remarkably well conducted, the former Tharsos Club members were initiated into the mysteries of Sigma Nu Fraternity.

At the same time, Professor William I. Ferguson, who had served the unusually long pledge-ship of forty years, was initiated as a full member of the Fraternity. Mr. Ferguson was the sponsor for the Tharsos Club and continues in that capacity in Sigma Nu. His wise counsel, his inspiring talks, and his genuine interest in the fraternity have been a dynamic force behind the transition from the Tharsos Club to the Sigma Nu Fraternity.

Special credit is due Messrs. Smith, Bacon, Lower, and Hoy for the excellent representation they made for the club at the Grand Chapter Convention



E. Smith, C. Lower, J. Gosney, C. Bradley, A. Jeter  
H. Edwards, V. Hopkins, R. Landrum, G. Scholle, R. Hoy  
C. Dowell, H. Berning, J. Stevenson, J. Elder, L. Ritterbusch, M. Doughty

Dearest Lil Harry,  
I'd bet I catch a high fever as you do  
next summer when we meet at the river.  
Love to you — D. Landrum



D. McDowell, E. Braden, R. Sims, J. Nichols, J. Irvin  
R. Hains, A. Brown, B. Nichols, J. Sterner, R. Johnson  
R. Borberg, J. Harbough, C. Ratliff, E. Lauther, J. Berry, R. Campbell

Harry—  
you have  
been a  
good friend  
all the way through  
the both like  
Campbell, you  
like Good Shows  
& I love  
Best of luck  
Bob Borberg

of Sigma Nu, in Bigwin Inn, Canada, last August; and to Chapman Bradley for his preparation and publication of the Formal Petition to Sigma Nu. Their work largely determined the favorable action of the Grand Council.

The members of the fraternity have taken an active part in all the activities on the campus, and have endeavored to put into practice to the best of their ability the ideals of their organization.

An installation banquet, and a "Bowery" party in the fall, and a formal dance in May constituted the main social functions during the year. An oyster supper and a "weiner roast" were also occasions worthy of note. Captain Dowell's basketball team was unusually successful.

### OFFICERS OF THE FRATERNITY

Commander  
Lieutenant-Commander  
Recorder  
Chaplain  
Treasurer  
Assistant Treasurer  
Marshal  
Sentinel

Elston K. Smith  
Cecil W. Lower  
Chapman Bradley  
John R. Gosney  
G. Aubrey Jeter  
Glenn Scholle  
T. Vern Hopkins  
R. B. Landrum



# The Women's Athletic Association

THE Women's Athletic Association is a group of young women who have fulfilled certain requirements in athletic work.

Their activity on the campus this year has been of high and interesting quality. Their winning of first prize for the best Homecoming Float first brought them in the limelight. In the second semester they gave two well-planned student programs, one of which was a "preview" of their show "The Pirate Phantasy."

This gala affair took the place of the usual W.A.A. carnival, and proved a success, both from the standpoint of attendance and finance. In the romantic setting of a pirate ship, the audience received a most accurate view of what takes place when pirates capture a half-a-dozen sailors, a few Arkansas Travelers, and a Spanish couple, along with some colored folk.

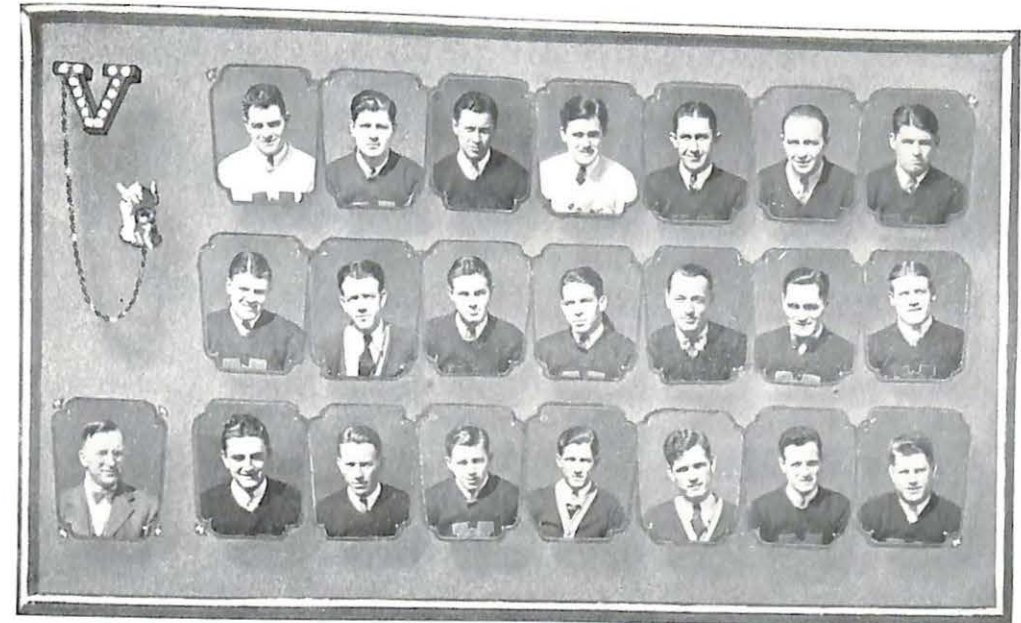
Miss Margorie Robertson, their sponsor, and Mary Catherine Ryan, their president, have both served their offices in a highly commendable fashion.

### OFFICERS OF THE ASSOCIATION

- President MARY RYAN
- Vice-President RUTH COULTER
- Secretary-Treasurer HELEN GABELMAN



Mary Ryan, Elsa Baldus, E. Frances Barnds, Virginia Black  
Audrey Black, Cora V. Brownfield, Ruth Coulter, Helen Gabelman  
Mary M. Gooch, Ruth Hendon, Nanabel Ross, Charlotte Ryland



Ashford (Alumnus), Cameron, Daugherty, Dowell, Elder, Harbough, Hinton  
Hopkins, Long, McCollum, Nichols, Rieth, Ritterbusch, Runkle  
Coach Godfriaux, Sponsor, Rumans, Sebastian, Smith, Sparks, Stevenson, Taylor, Williams

# The "V" Club

THE "V" Club is an organization composed of Missouri Valley athletes who have been proficient in either of the three major sports: football, basketball, or track, to such a degree as to win a letter.

The Club is of especial value to the college in that it attracts high school students from all over the state to its basketball tournaments and track meets. This year, the basketball tournament had eleven high schools participating. It is expected that even more will participate in the track meets.

The work of the "V" Club is an unselfish task, and worthy of encouragement and commendation.

—E. B.

### OFFICERS OF THE CLUB

- President EARL RIOTH
- Vice-President DICK NUCKLES
- Secretary RAYMOND LONG
- Treasurer DEMUS DAUGHERTY
- Sponsor COACH HENRI R. GODFRIAUX

# Young Women's Christian Association

THIS year has proved a most fruitful one for the Young Women's Christian Association on Missouri Valley Campus. This success may be attributed to the wise counseling of Mrs. Forest Western and Miss Clarabel Banta, and also to the efficient leadership of the president, Josephine Evans.

Besides conducting inspiring weekly meetings, the Y.W. also aided in bringing the vocational leader, Dr. E. G. Cutshall and Miss Fern Babcock to Missouri Valley.

One delegate was sent by the Association to the Hollister Y. W. and Y. M. Conference during June, 1931, and one to the Officers' Training Conference in Columbia, Missouri, this spring.

The Y. W. and Y. M. will sponsor the last Sunday morning service of the school year at the Odell Avenue Presbyterian Church. An alumnus of the College will be the guest speaker at this hour.

### OFFICERS OF THE ASSOCIATION

President	JOSEPHINE EVANS
Vice-President	VIRGINIA SHERLOCK
Secretary-Treasurer	HELEN GABELMAN



The Cabinet: J. EVANS V. SHERLOCK H. GABELMAN M. RYAN  
 MISS BANTA, Sponsor M. MALCOLM M. MITCHELL R. OGDEN R. BROWN



C. LOWER D. McDOWELL J. GOSNEY E. BRADEN  
 DEAN MILLER, Sponsor H. BARNETT C. DOWELL R. SUTTON

# Young Men's Christian Association

THE Y. M. C. A. has worked during the past year to meet a two-fold challenge: to determine the principles of religion and to give these principles a practical application.

To meet the first of these challenges weekly meetings were devoted to the discussion of the paramount teachings to be found in the life of Christ. These principles were then applied to such every day questions as international disarmament and the religious life of the college student.

During the year this organization sponsored such noted speakers as E. L. Eichelberger, National Secretary of the Y. M. C. A., and Dr. E. Guy Cutshall of the Iliff School of Theology in Denver, Colorado.

### OFFICERS OF THE ASSOCIATION

President	CECIL W. LOWER
Vice-President	W. DAVIDSON McDOWELL
Secretary-Treasurer	JOHN R. GOSNEY
Sponsor	C. L. MILLER



Back Row: Berning, Parsons, Jordan, Miller, Rumans, Malcolm, Sweeney  
 Center Row: Huff, Connell, Howkinson, May, Genz, Ryan, King  
 Front Row: Rearick, Ault, Entrekin, Black, Doughty, Walk, Yowell, Lower

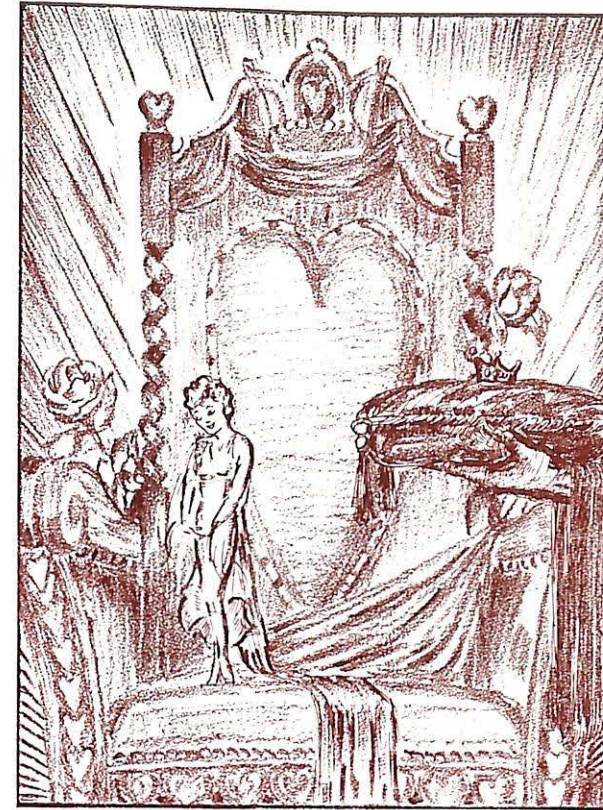
## Pi Gamma Mu

THE Missouri Zeta Chapter of the National Social Science Honor Society, Pi Gamma Mu, was established on the Campus of Missouri Valley College in April of 1931. The chapter, although limited in membership to students of high scholastic achievement in the Social Sciences, now numbers twenty-seven.

Its primary object is the promotion of a scientific attitude toward social problems on the part of both graduate and undergraduate students. Contemporary social, economic and political topics receive attention at each regular monthly meeting.

### OFFICERS

President	CECIL W. LOWER
Vice-President	FRANK L. REARICK
Secretary-Treasurer	C. L. MILLER



I.

Their Majesties--  
 The Queens

II.

Valley Life

## Mary C. Ryan

May is in bloom,  
All the birds singing,  
Roses softly springing,  
Youth and life surprising,  
Constancy arising,  
Round you not a gloom.  
You hear the call of them,  
And you are all of them.  
Not in the ages,  
Queen, have the sages  
Under the bowers of  
Earth and her flowers of  
Every aroma, been able to find  
Nobler and sweeter in spirit and mind.

I. N. E.



MISS MARY CATHERINE RYAN

*Queen of the May*

## To Her Majesty, the Queen of the Harvest

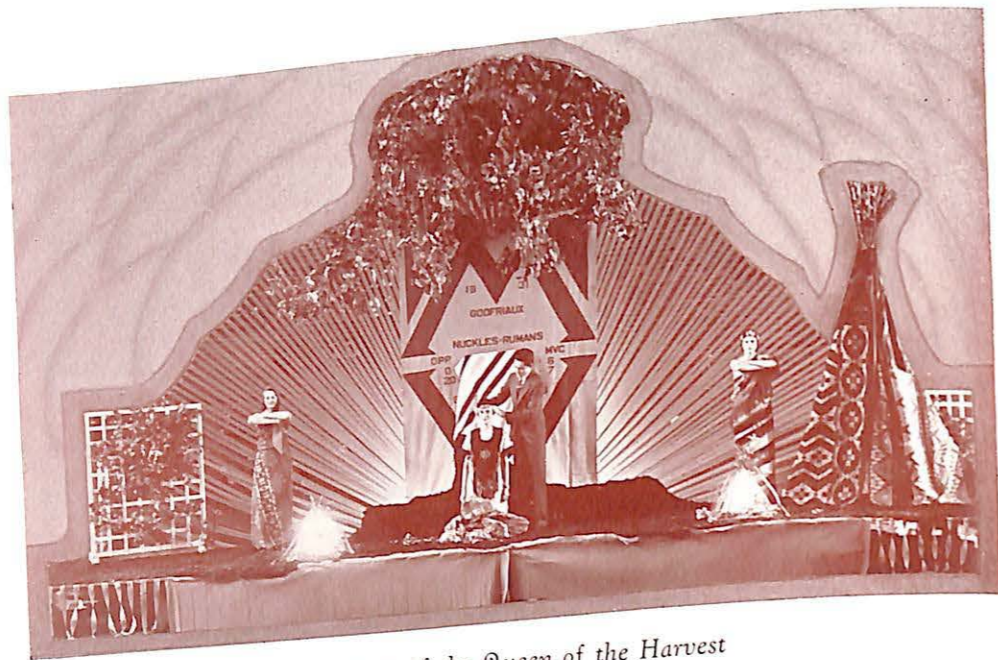
A Council in the forest, a dance of fire and life,  
Indians in their blankets—in their hearts no strife,  
An Indian maid, so dark, so pure, so delicately fair  
Offers fruit and sheaves, thus to appease the Gods of the Air.

Now, mid the rustling golden leaves there streams  
Radiant moonlight. Glorious sheaves of silver beams  
Fall upon the figure kneeling,  
Whilst silence o'er the tribe is stealing.

On her head they place the beaded crown,  
Just is the Tribe in this renown,  
For she is Queen! She is loved by all!  
Choice of the Tribe, may her reign never fall.

The tom-tom starts its monotonous throb  
The maid lifts her face, to Heaven and God.  
Her subjects kneel, her praise they seal,  
For her charm and her beauty, and unfailing duty

To the things that are high and ideal,—  
To that which is Good, that which is Real.  
To Eileen Robertson, whom we choose as our best,  
Our homage we bring, to the Queen of Harvest.



Coronation of the Queen of the Harvest



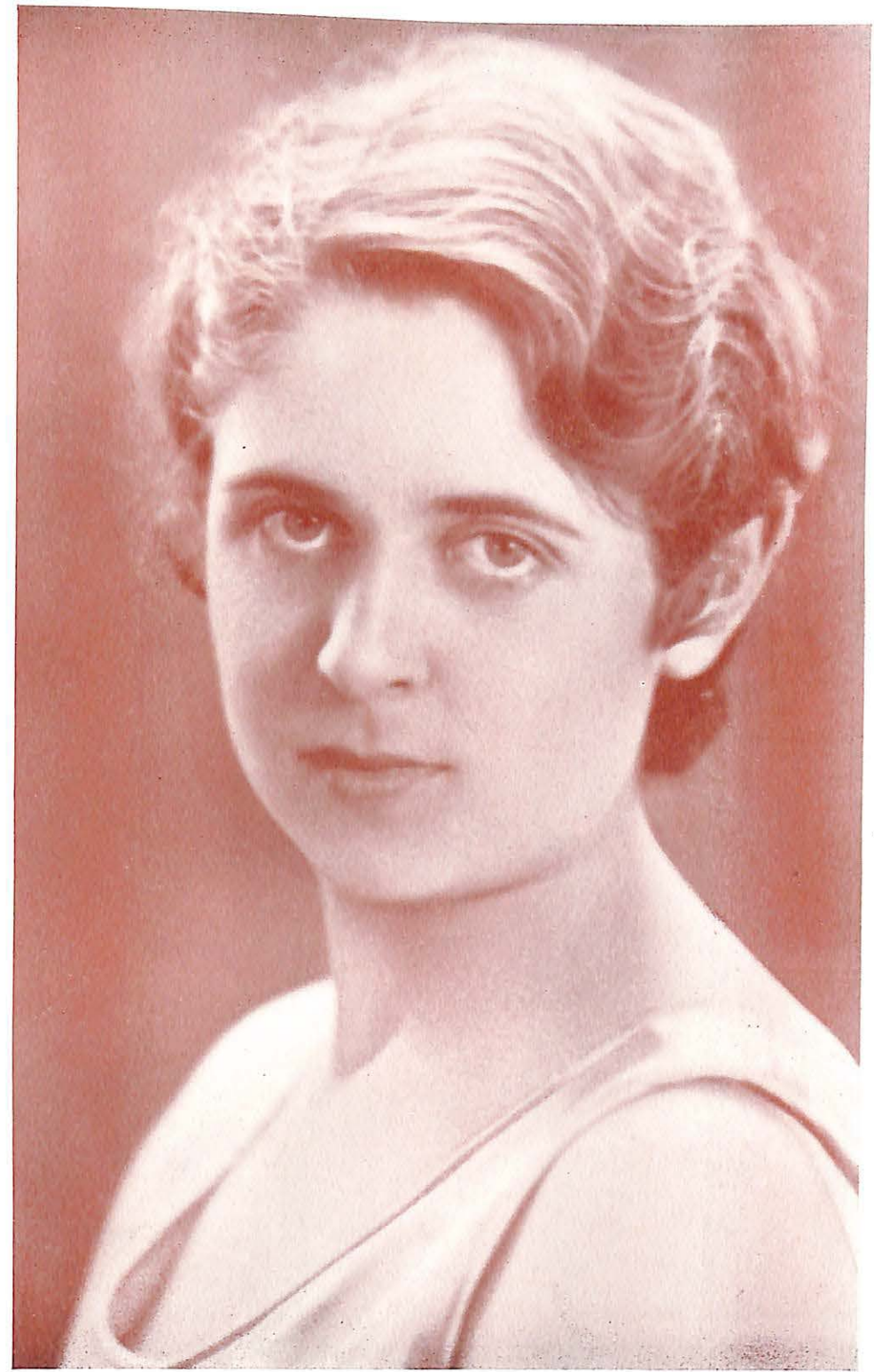
MISS EILEEN ROBERTSON

Queen of the Harvest



MISS JANICE REID

*Senior Class Queen*



MISS HELEN LOUISE FERGUSON

*Junior Class Queen*



Harry I sure did enjoy that swell ride tonight.  
 We sure will miss you and Julia next year,  
 but you'll promise to come see us, wait you?  
 If any of us have any time or diners this  
 summer I would sure like to see you down  
 near Hoosho - and there's plenty of good  
 cold ice water - and maybe I can show  
 you one real way to get in the city.  
 Luck to you, Virginia

MISS VIRGINIA BARLOW

Sophomore Class Queen

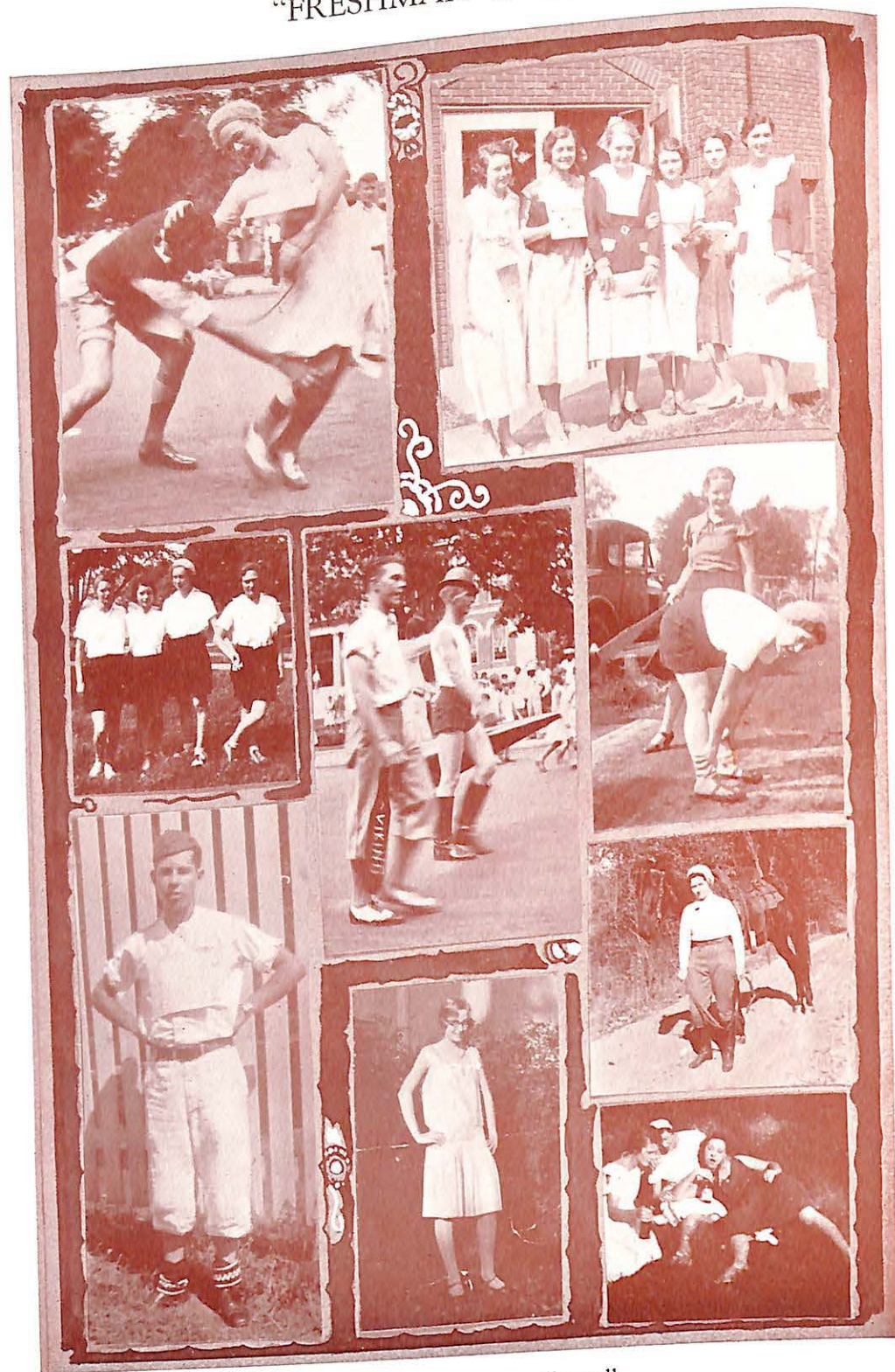


Harry -  
 You'll be leaving  
 us soon but we  
 won't forget you.  
 Love to Papa  
 Jo

MISS JOSEPHINE MOORE

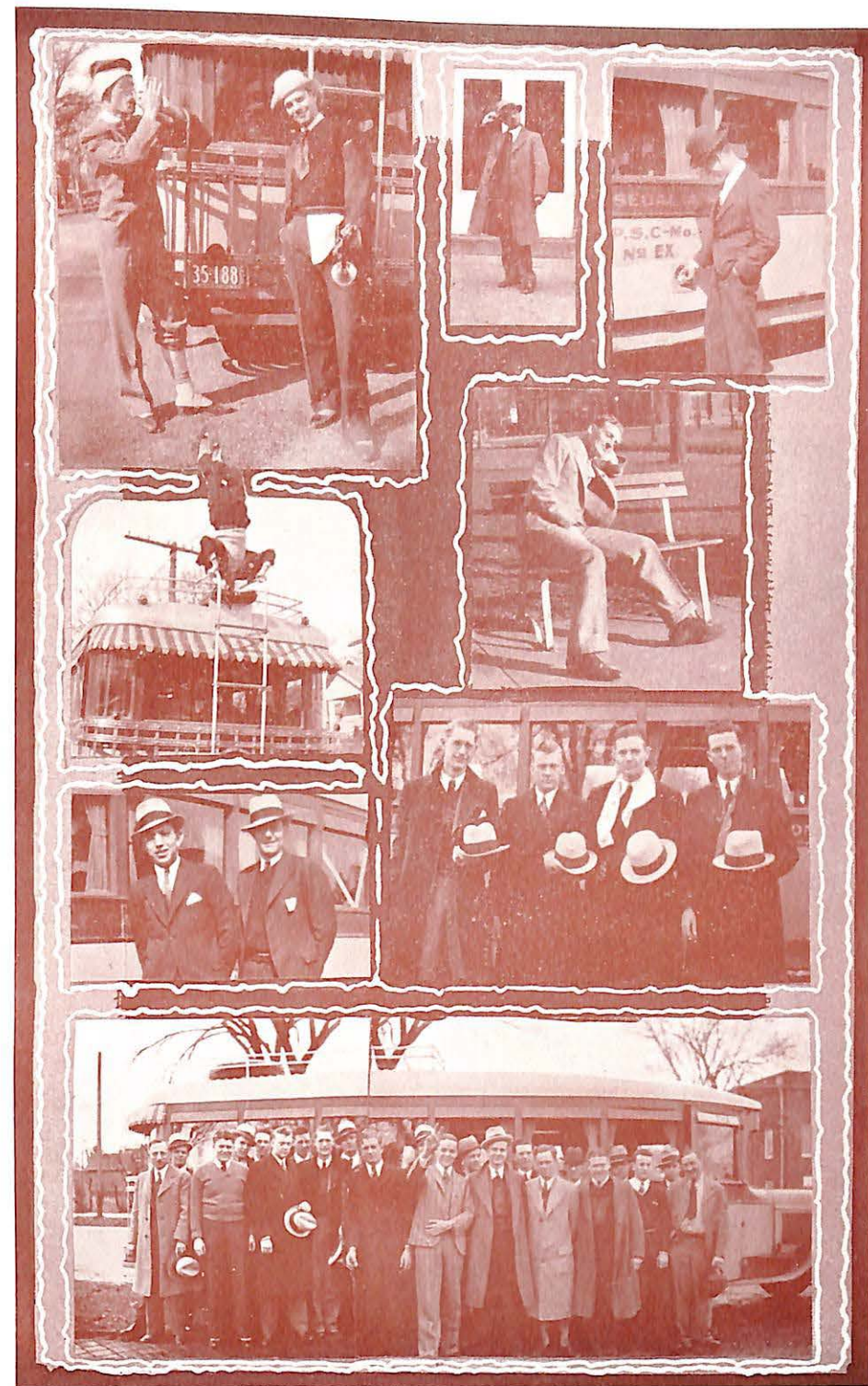
Freshman Class Queen

"FRESHMAN DAZE"

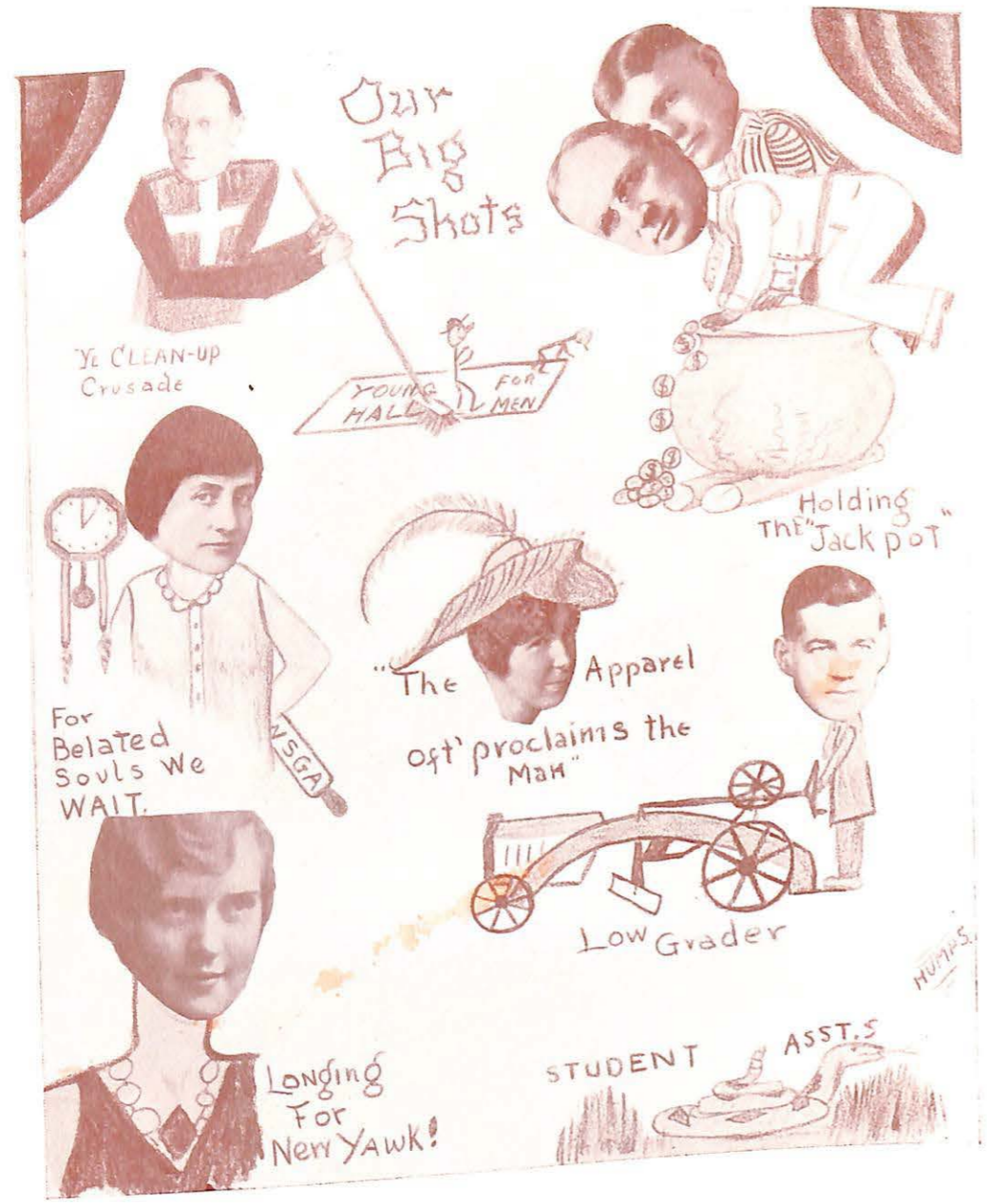


"Some of these pictures will recall  
What to the Freshman doth befall."

YE TRIPPE OF YE GLEE CLUBBE



"They who went may understand"



BELIEVE IT OR NOT



Just these words the Staff will make,  
 "On this plate there is no fake."



"Couples odd, and couples even,  
Some kept odd, and others even."

We Know Them Better As:

- "Administration's Choice for President" ..... J. Carson Dowell
- "K's Choice for House Mama" ..... Prof. Jordan
- "Arkansas Tent Pole" ..... Robert Sims
- "The Man of Letters" ..... Dean Miller
- "Peep From Beneath Eddie's Thumb" ..... Clarabelle
- "The Twenty-five Reasons Why I Don't Date" ..... Girls at Birchhead
- "Wait Until I Ask Mama" ..... Mae Dell Kidwell
- "The Light that Shines (under a basket)" ..... Art Olive
- "Two-Tons" ..... Charlotte Ryland
- "Feather Brain" ..... Hamner Edmonds
- "Heartbreaker" ..... Brown Hamer
- "Guardian of Campbell's Side Door" ..... Helen B. May
- "Our Most Earnest Griper" ..... Harold Humphrey
- "Precious Metal Excavaters" ..... Imogene Ault
- "Bandy Legs" ..... Bullock
- "Hally"—Numerous ones who don't use Listerine and otherwise neglect their oral hygiene. (We're too polite to mention names.)
- "Pigeons"—We further refrain from names but we are having stools built for them all. They would have been completed before but lumber ran out after two loads were consumed. Names available at W.S.G.A.



# The A C H I L E V E M E L N T

## Looking South On Brunswick

With thanks to R. Wilson Brown, who made up the title

Here's the end of another year and quite a different aspect is thrown on the scene from what there was last year. After a year of total dis-harmony on the part of all, we sit here at the end and look back at some of the major items of social, mental, moral, and physical calendars.

Early fall, frosh initiation: a job that was curtailed by a chicken-hearted few. The result is about what could be expected: a noisy, "smart" bunch of kids. However the case will be a different one next year. Since we have had a change in initiation policy wished on us we might as well meet the next year's "Campus Child" at the front gate with a rose or a violet, or perhaps a pansy. With a nosegay for each new "Child" from the boys, maybe we could induce the girls to add a welcoming kiss. With this treatment as an introduction to our campus the new student should be a well disciplined snob by the close of the first semester. This sort of thing should make it easier for the field secretary to get us plenty of burley, rough football material.

Later: same fall. Several prominent students play barber. We know that they were playing because they did it free.

Still later: we hurt G. Anna Kirkpatrick's feelings and do hereby apologize. If there are others in the same boat, that's just too bad 'cause G. Anna's are the only feelings we are sorry to have hurt.

Early winter: Sigma Nu comes to the campus with the pomp of an ancient Roman army and about as much dignity, (the ancient Roman armies being dead).

Same period: Tri C catches up with Tharsos and renames itself Alpha Delta Kappa, (which, translated means "We never give up").

Xmas: Everyone goes home and regulates the old diet for a few days.

Midwinter: Semester exams—All flunk the snap courses and the ones with the least curve in their grades remain and the rest go home.

Second semester starts with the customary bang (the only bang we can recall is the one the pocketbook got)

## Could It Be Possible That: ~

Adeline Howkinson is "reserved", or just unfriendly?

Ashworth is a doctor or is that suitcase just a fake?

Liz Hixson will beat "Smoky" Williams in the race for the most number of hours being campused.

Anything will ever come of these silly room searches by the House Council at Young?

A Sigma Nu and a Delta Kappa will ever be seen to walk arm in arm across the campus?

Liz Winn and Jim Sterner will EVER learn to be newspaper writers of any value?

Bradley has another new girl?

Doc. Mack goes out of town for pleasure?

Anything but an Eskimo could enjoy the sleeping facilities at Young Hall?

There are not stool pigeons on our fair campus?

"Tex" doesn't know on which side a piano lid lifts?

Dean Fichthorn doesn't know *all* about this Glee Club trip?

Missouri Valley needs a new organ?

Blackbirds have a value?

Mr. and Mrs. will ever be allowed to sit together in the library?

Jean Coleman thinks that a shoat is a cub bear.

The benches have a value on the campus?

Jordan's classes went to Kansas City and Sedalia in the interest of Economics?

## Why, Of Course Not!



The

A  
C  
H  
I  
L  
L  
V  
E  
R  
M  
E  
N  
T

# Impressions and Digressions

(By one who has been impressed and digressed)

A gang of about twenty-five bohunks dropped off down in the sticks of the southern part of this state to punish people for about seven days with their warbling.

The Mule City of the state college for school marms was hostess first and produced the biggest crowd of any city (guess the news traveled ahead of the Club and the people stayed home, or went to the movies instead).

Springfield sure is some hostess,—they don't stop at banquets but have the local frat sling dances so the boys can stay out late and miss the morning bus to Greenfield. For good food after dances, be sure and see Smitty and Chap, they like expensive sandwiches.

We're sure glad that every place didn't have an organ for the 'Fessor to practice on, 'cause we never would have gotten out of town before noon. We had to appoint Mark as body guard for Paddy's music on the second day out. (Good thing that Paddy's flesh is fixed on or he'd be as skinny as Gosney.)

Now you'd never know that Margaret Robertson was Dutch until you went on the Glee Club trip and stopped at Greenfield. Her mother knows how to give bridge parties and serve refreshments and her sis is some hostess. (Ask any of the boys that retired after midnight while in Greenfield.)

Louis J. (Comaschi) is some lady's man or some ladies' man if you ask Yours Truly, 'cause all these girls what rated dates with him on the trip had that far away sick calf look in their eye whenever he was around. We had to watch Art Olive in that cafe in Boliver 'cause he was going to have us spend all of our money there so he could hear how sweetly the girl said, "Thank You."

Webb City is a "Waterloo" and I'd suggest that she have her name changed. I don't know whether to attribute it to the chat piles or the way the girls all smile. Anyway, that is where the trouble started. Bell sure made a mistake when he invented telephones that would work between cities after midnight, (or even between south Missouri towns).

Carthage is the dear old home town of some of our pals on the campus, and the home town of the chimney disease, (you know,—the "flew") while we were on the trip. Joplin has some high school. When they all get started clapping it sounds like a boiler factory, and don't limit the number of boilers! If stage scenery wasn't made for names and addresses, then some scenes I know of have been sorely misused.

Say, you should have heard that introductory speech of the Dean's before each concert. It was hard to beat. Sort-a like those Tuesday morning chapel talks—nothing to it.

S  
A  
B  
B  
I  
D  
U  
R  
I  
A  
of  
1  
9  
3  
2

You should have heard Campbell "Roll Down to Rio". After five concerts every day for a week, we could feel the motion, and it almost made us sea-sick.

Say, we had one song that was such a huge success that we only used it once on the whole trip. The guy that wrote that Song of Fellowship must have kept awfully bad company because we couldn't even find a friendly chord in it.

It really wasn't a bad trip, and we brought back all of the warblers as sweet and pure as the day they left. Guess we'll leave the boys smoking Spuds and eating Mellows until next year.

Personally I would rather go to Columbia on dates than stay in Marshall and appear in our home concerts.

Yours sincerely,  
"DUCE."

## Prize Boners for 1932

(See next page for description of prizes)

First Prize: To Whom it May Concern.

For the efficient curtains hung in the chapel. (We credit the curtains with using some initiative when they refused to open for the second act of "The Merchant of Venice." But they should have used more.)

Second Prize: To Miss Marjorie Robertson.

For jumping to the conclusion that Pettit was inebriated on the night of the Pirate Phantasy, and for saying to him plaintively: "You wouldn't do this to me, would you, Frank?" (We wonder though, why she jumped to the conclusion so quickly?)

Third Prize: To Mary Catherine Ryan.

For admitting that she dreamt she stole the . . . . . and hid it under a tub.

Fourth Prize: To Davidson McDowell.

For coming down to the Tharsos Brawl with the odor of "Gin" upon his person. (Of course, we hasten to add that we did not know that he spilt some rubbing alcohol on his costume just before he came downstairs!) Moral: All is not "likker" that smells that way.

The

A  
C  
H  
I  
L  
E  
V  
E  
M  
E  
L  
N  
T

MISSOURI VALLEY COLLEGE

Fifth Prize: Anonymous.

For saying that Miss Kopf's pie a-la-mode ought to be called "State Capital Dessert,"—because the "dome" is always hollow.

Sixth Prize: To Dean Claude L. Fichthorn.

For writing a fifty-word condolence telegram to Doctor Mack upon receiving a special from that personage from a hospital in St. Louis. (Joke: Dr. Mack wasn't sick, he was merely visiting his son.)

Seventh Prize: To the Radio Announcer on WDAF.

For his insistence upon announcing Dean Fichthorn as "Dean Fish-horn" over the radio the night the glee club sang.

Eighth Prize: To J. Carson Dowell.

For the first paragraph of his inaugural address. (The words were so big, the printer refused to set the type. We regret this exceedingly).

Ninth Prize: To Floyd (Parson) Williams.

For believing that Sterner is an epileptic, just because he "throws" fits.

Tenth Prize: To the Gentle Reader.

For reading this entire list in the hope that you might see your name in print.

DESCRIPTION OF THE PRIZES

First Prize—A Bottle of Three-in-One Oil, with Monk's Cloth Cover

Second Prize—Can of Raw Tomatoes

Third Prize—A Case of Insomnia

Fourth Prize—A Bar of Lifebouy

Fifth Prize—One Bubble-Pipe

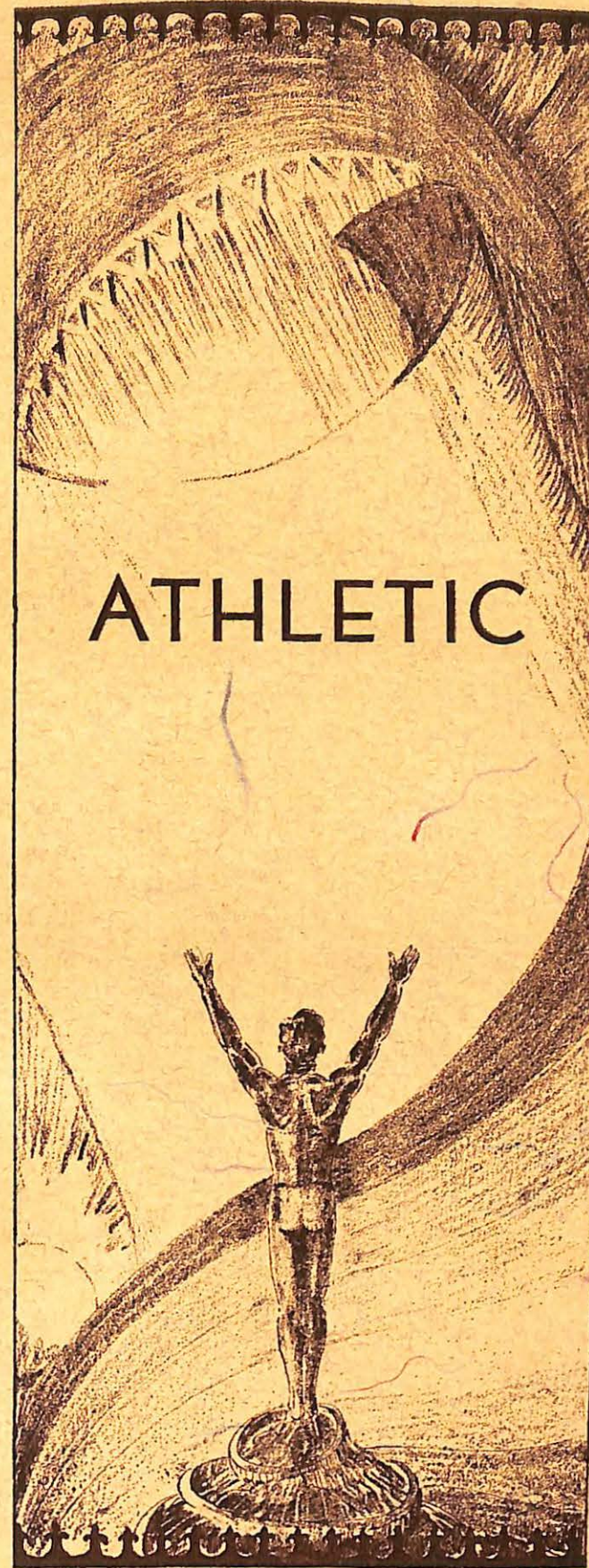
Sixth Prize—A "Brief" Case

Seventh Prize—A Copy of "Who's Who"

Eighth Prize—A Copy of the Gettysburg Address

Ninth Prize—One Full-Fashioned Dunce Cap

Tenth Prize—One Looking-Glass



A  
C  
H  
I  
L  
E  
V  
E  
M  
E  
L  
N  
T

# The A C H I L E V E L M E N T

## Department of Physical Education

THE importance of courses in Physical Education has not been under-estimated on Missouri Valley Campus. Each student is required to take at least two years of work in this Department before receiving a degree. For the regular classes in men's physical education work: basketball, soccer, and "touch" football are played.

In the field of intercollegiate athletics the Department has carried on its work in football, basketball, track, and tennis. Excellent coaching, coupled with the loyalty and confidence of his men, has consistently brought Coach Godfriaux great credit, and brought to his men outstanding victories.

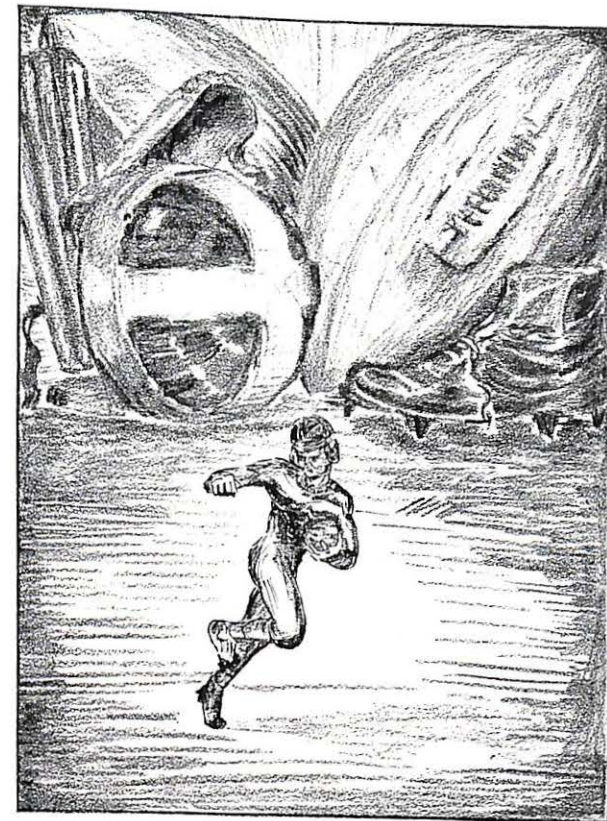
### THE STAFF

HENRI R. GODFRIAUX  
*Director of Athletics  
Head Coach Football, Basketball, Track  
Instructor of Physical Education*

VOLNEY C. ASHFORD  
*Assistant Coach Football, Basketball  
Instructor of Physical Education*

MARGORIE ROBERTSON  
*Director of Women's Athletics  
Instructor of Physical Education*

EARL PETTIJOHN  
*Tennis Coach*



F o o t b a l l

S  
A  
B  
I  
D  
D  
U  
R  
I  
A  
of  
1932

The

ACADEMIC

MISSOURI VALLEY COLLEGE



COACH HENRI R. GODFRIAUX

COACH Godfriaux stands for clean, wholesome athletics, a high type of manhood, and reward in proportion to "what is put into a thing." He constantly turns out good teams at Valley despite the fact that he is always compelled to work with one of the smallest squads in the conference. Valley's 55-0 victory over Central stands as a monument to his coaching and to his system of play.

A Senior at Valley last year, Volney Ashford returned as assistant coach this fall. His work has been of the same high calibre that made him a leader while in the student body.

Dr. George F. Nuckles has been of great assistance in helping Valley athletes recover from injuries, and in giving first aid treatment. His co-operation is greatly appreciated by all Vikings.

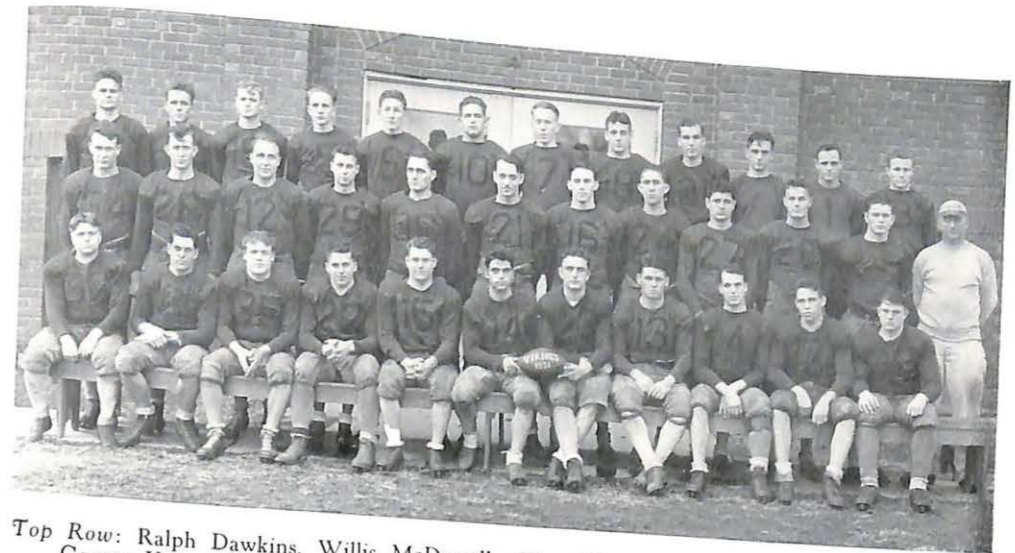


VOLNEY ASHFORD  
Assistant Coach



DR. GEORGE F. NUCKLES

MISSOURI VALLEY COLLEGE



Top Row: Ralph Dawkins, Willis McDowell, Allen Plumb, Butler Thomas, Ralph Duggins, George Yates, Ed. Sebastian, Robert Riley, Wm. Montz, Robert Dredge, Owen Taylor, Harold Brown.  
Second Row: Billy Goodson, John Buxton, George Harbough, Virgil Daugherty, Louis Ritterbusch, Earl Rioth, John Sherman, John Elder, Alfred Cameron, Orville McCollum, Lyle Epps, Coach Godfriaux.  
Front Row: Maurice Doughty, Clifton Wilcox, James Runkle, George Smith, Milan Williams, Richard Nuckles, Leon Rumans, Hubert Hinton, Fred Twilling, Bash Nichols, T. Vern Hopkins

The Viking Squad

THIS large group of Vikings worked strenuously throughout the season under Coach Godfriaux's direction, and were moulded into an efficient unit of strength. Special credit is due those of the squad who worked so faithfully on the practice field, but who were not able to pit their strength against other college teams. The fruits of their labors will undoubtedly be evident in next year's team.

SABIDURRIA of 1932



RICHARD NUCKLES



LEON RUMANS

## The Lettermen

Richard Nuckles—*Junior*—3 Letters

Co-captain of the 1931 team along with Rumans, Dick was scheduled to be teamed with Hinton as co-captain of 1932, but his professional studies take him to another college. His loss is deeply regretted. A natural leader, a triple threat man, and a strong defensive cog, his value to the team was more clearly illustrated in his absence from play due to injuries.

Leon Rumans—*Junior*—3 Letters

One of this season's co-captains, Leon led his teammates with the fight and enthusiasm that is always characteristic of his play. Injuries to this star were a severe blow to the team's performance. He has another year to play and should prove the bulwark of the line next year.



EARL RIETH



CLIFTON WILCOX



FRED TWILLING

EARL RIETH, *Senior*—4 Letters. "Cholly" was one of the outstanding football players of Viking history. Great in every phase of the game. One writer effectively characterized him as "the jabbering, fighting tackle who is never down." He was unanimous all-conference left tackle selection and was captain of that team. He was also placed at tackle on the all-state team.

CLIFTON WILCOX, *Senior*—4 Letters. At quarter Tony showed good judgment in his selection of plays. He was a dependable safety and a fine block. His calm, collected leadership will be missed next year.

FRED TWILLING, *Senior*—3 Letters. Fred lettered at half this year. He was a regular end on the '29 team. Although a small man he was a fighter, especially on defense.

MILAN WILLIAMS, *Senior*—3 Letters. Pilot was one of the best full backs in the conference, hitting the line with plenty of drive, spiking hard, and tackling fiercely. Backing up the line, he was in almost every play.

JOHN ELDER, *Senior*—2 Letters. Slatz (Gary) had never been out for football before his sophomore year in college. He made the team his junior year and has not missed a game in the last two years. This season he fitted nicely into the line at tackle.



MILAN WILLIAMS



JOHN ELDER



VERN HOPKINS



VIRGIL DAUGHERTY



LOUIS RITTERBUSCH

VERN HOPKINS, *Senior*—1 Letter. Hop's senior year finds four seasons of service rewarded with success and the coveted "V." This year he rounded into a guard of such ability as to bring him into the charmed circle of the Varsity. His satisfaction must be something no four barred athlete will ever know.

VIRGIL DAUGHERTY, *Senior*—1 Letter. "Dough" rounded out his athletic career with a football letter. He is one of the few athletes to make letters in four major sports at Valley. His specialty was breaking up end runs and off tackle plays.

LOUIS RITTERBUSCH, *Junior*—3 Letters. A hard charging guard both on the offense and defense. He often dropped the enemy ball carrier behind the line of scrimmage. "Louie" received All-Conference honorable mention.

HUBERT HINTON, *Junior*—2 Letters. Hubert is co-captain of the 1932 team. He snapped the ball back well and played a fine defensive center. He did most of the punting and in addition could carry the ball from punt formation for variety. He was placed at center on the All-Conference second team.

BASH NICHOLS, *Junior*—2 Letters. Nick was a fine all-around end. Equally good at blocking out his man, receiving passes, and breaking up the opponent's plays, he was a regular throughout the season. His sincerity and self-application were valuable assets.



HUBERT HINTON



BASH NICHOLS

Harry I. Gony  
 You can't talk  
 that banking  
 claim out all  
 by a do enough  
 for each. hope  
 the it is don't  
 drip down your  
 foul too much  
 this summer  
 it were + watch  
 close it to do  
 have enjoyed  
 your friendship  
 here's find  
 wishes for  
 good luck  
 Nick

One Hundred Ten



GEORGE SMITH



EDDIE SEBASTIAN



ALFRED CAMERON

GEORGE SMITH, *Junior*—2 Letters. "Tubby" was the big, aggressive left guard who bolstered up the Viking line. He had a nice charge in opening holes for Valley ball carriers.

EDWIN SEBASTIAN, *Junior*—2 Letters. Eddie alternated at quarter, half, and full back. He specialized at blocking, and pivoted well whenever he played the spinner position.

ALFRED CAMERON, *Junior*—2 Letters. Beside his classroom and outside work, "Al" held down an end on the Viking team. He had a fighting heart and was skillful at removing interference.

OWEN TAYLOR, *Sophomore*—2 Letters. One of the best ball-huggers this year. He deliberately outran defensive ends and halfbacks for long gains. As a defensive halfback he met running plays nicely.

JOHN SHERMAN, *Sophomore*—2 Letters. Shifted from end to half this year to utilize his weight and speed, John's success at that position began. From Warrensburg game to the climatic, 95-yard run against Central, he so impressed Parke Carroll, that he selected him for All-Conference fullback



OWEN TAYLOR



JOHN SHERMAN

One Hundred Eleven

The  
 A  
 C  
 H  
 I  
 L  
 E  
 V  
 E  
 M  
 E  
 N  
 T

S  
 A  
 B  
 I  
 D  
 U  
 R  
 I  
 A  
 of  
 1932

*Missouri Valley College  
 1932-33  
 James Runkle  
 Orville McCollum  
 Joe Harbough*

MISSOURI VALLEY COLLEGE

*I guess  
 there were plenty of  
 things done this year  
 I remember the  
 fellow who makes only  
 about 11 points  
 Joe Harbough*



JAMES RUNKLE



ORVILLE McCOLLUM

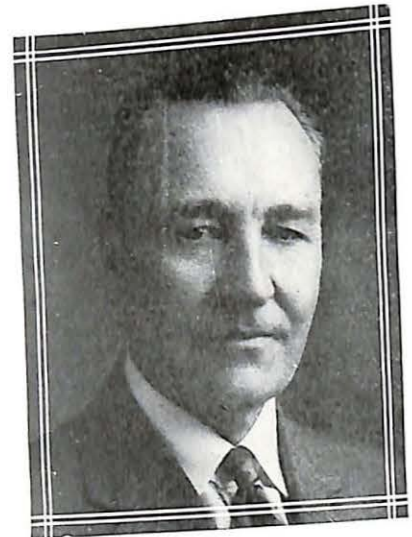


JOE HARBOUGH

JAMES RUNKLE, *Sophomore*—2 Letters. Jimmie was in there scrapping day in and day out. This boy is fast and with his physique should develop into a fine guard within the next two years.

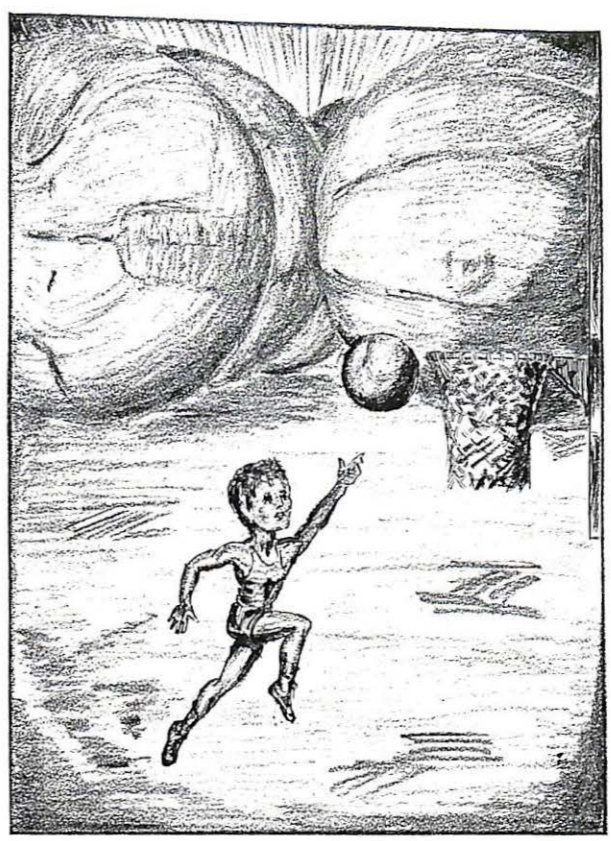
ORVILLE McCOLLUM—To Mac goes the distinction of making a letter at end on a team which possessed three veteran ends. He was an excellent pass receiver, as any 1931 Blue Jay will testify.

JOE HARBOUGH, *Freshman*—1 Letter. Joe lived up to the fine high school record throughout the season. As center he was an accurate passer, while as guard he was seldom charged out of play.



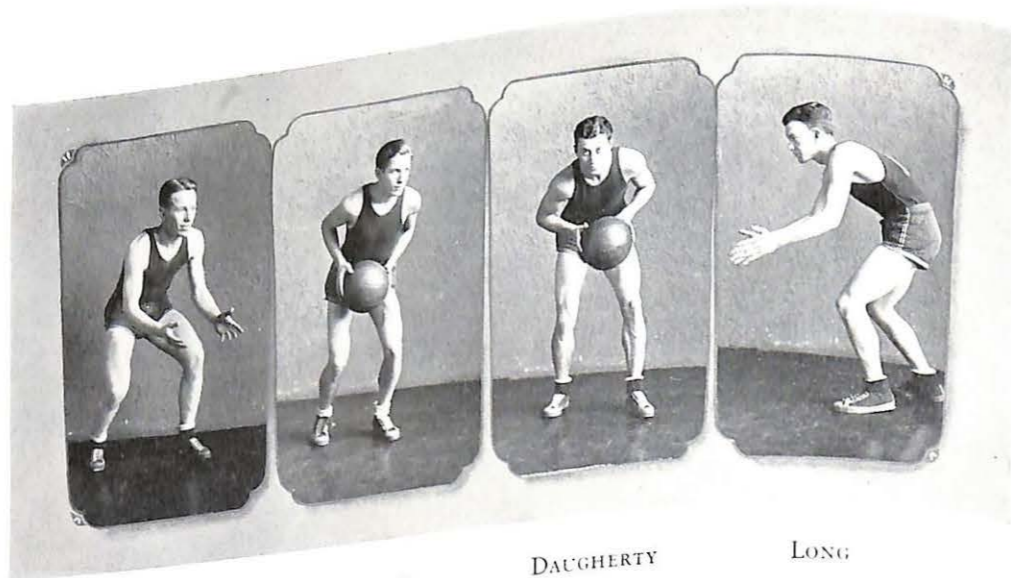
WILLIAM I. FERGUSON. Professor Ferguson played center on Viking football teams in years gone by, and is today a fine example of the high standards and ideals that underlie Valley athletics. He takes a personal interest in Viking teams and Viking players; follows them up and down the field or watches them from the sidelines with a never-tiring faithfulness. "Redblood's" pep speeches never fail to stir up that fighting spirit within the student body.

MISSOURI VALLEY COLLEGE



Basketball

S  
A  
B  
I  
D  
U  
R  
I  
A  
of  
1932



SEBASTIAN      SPARKS      DAUGHERTY      LONG

## The Basketball Lettermen

ED. SEBASTIAN, *Junior*—3 Letters. The captain-elect for next year is known for his steady, deliberate playing. He was a heavy scorer during the last half of the season, and his guarding was always effective.

CHARLES SPARKS, *Sophomore*—2 Letters. Undoubtedly the fastest man on the floor, Charlie constantly amazes the crowd with his efficient and even spectacular playing in spite of his midget size. He is an exceptional guard, and all-around good floorman.

VIRGIL DAUGHERTY, *Senior*—4 Letters. "Dough" is the veteran man of the team, and finished the year as center in his usual high calibre form.

RAYMOND LONG, *Junior*—3 Letters. As captain and forward, Long set an excellent example in determined playing. He threw himself fully into every game and his earnestness inspired the confidence of his team. He was a consistent scorer.

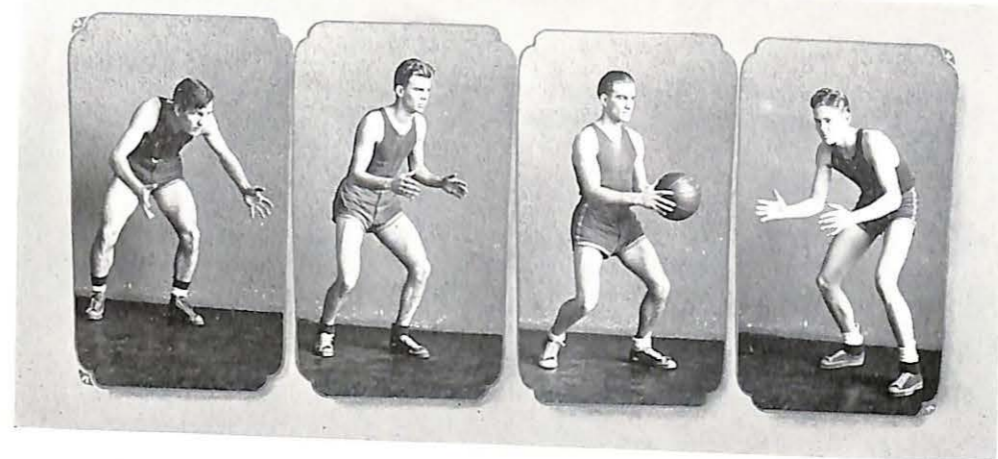
## The Basketball Lettermen

JOHNNY STEVENSON, *Sophomore*—2 Letters. Johnny literally "blossomed out" this season, and became recognized as a fast, dependable guard, always driving. Next year he should prove a valuable asset to the team.

NOAH HUMPHREYS, *Freshman*—1 Letter. Noah's first year has been a successful one. His guarding was of effective quality this year, and should be outstanding next season.

RALPH DUGGINS, *Freshman*—1 Letter. Duggins played a masterly game at Central, and his floor work as forward has been particularly promising.

PETE REA, *Freshman*—1 Letter. Still another freshman who proved himself of real value to the team. As the season aged, the tall young Viking constantly improved in playing technique.



STEVENSON      HUMPHREYS      DUGGINS      REA

The  
A  
C  
H  
I  
L  
E  
V  
E  
M  
E  
N  
T

S  
A  
B  
I  
D  
D  
U  
R  
I  
A  
of  
1932

The

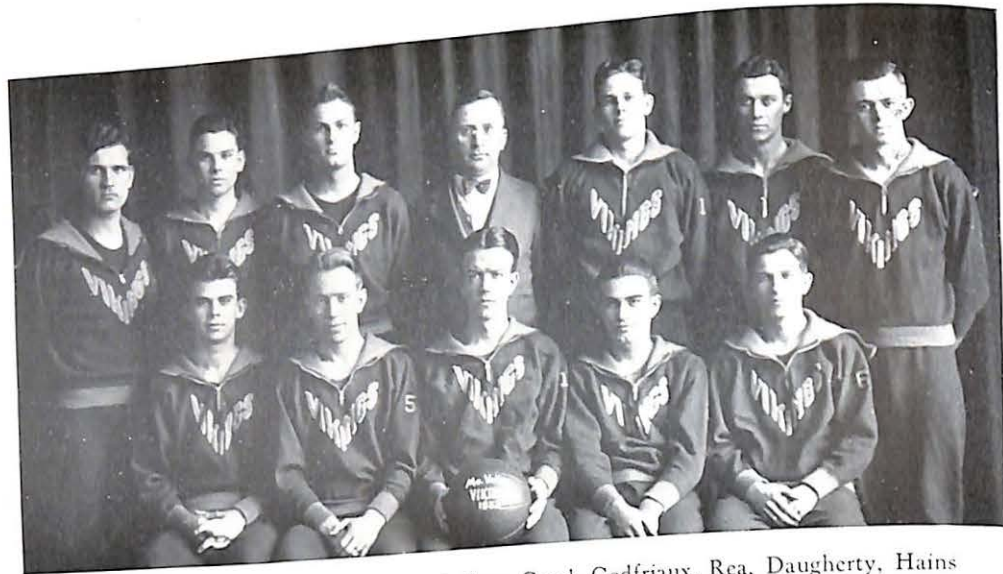
A  
C  
H  
I  
L  
E  
V  
L  
M  
E  
N  
T

# The Basketball Squad

ALTHOUGH the team this year suffered many defeats and won only two victories, it was a team which won the admiration of the onlookers for its bull-dog determination in defense work. The team seemed to have everything but scoring ability.

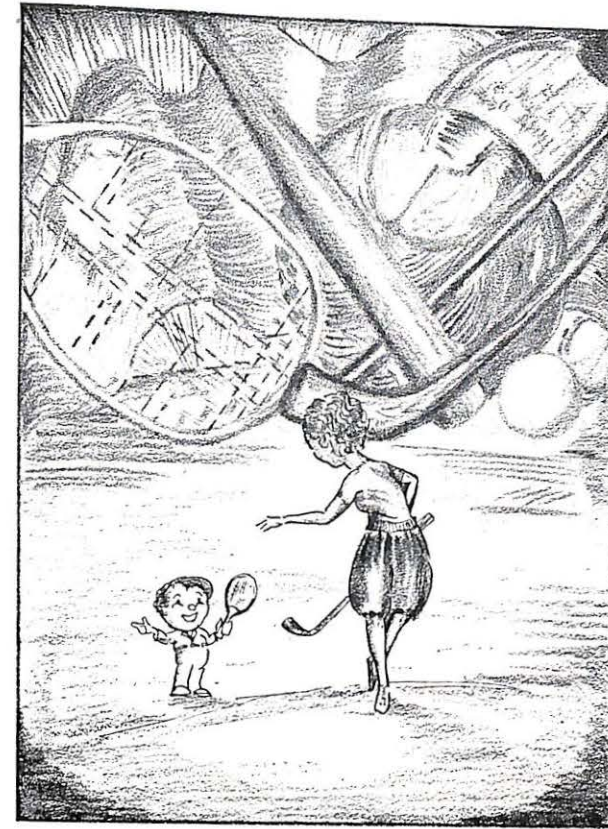
During the road trip, both Daugherty and Sebastian were unable to play on account of illness, and thus handicapped, the team had hard sledding. McCollum, who showed signs of being a letter man, developed an infection in his knee early in the season, and was unable to play.

A keen interest was shown in basketball, both by the large attendance at games, and by the large number of boys who came out for basketball—over forty reported to Coach Godfriaux.



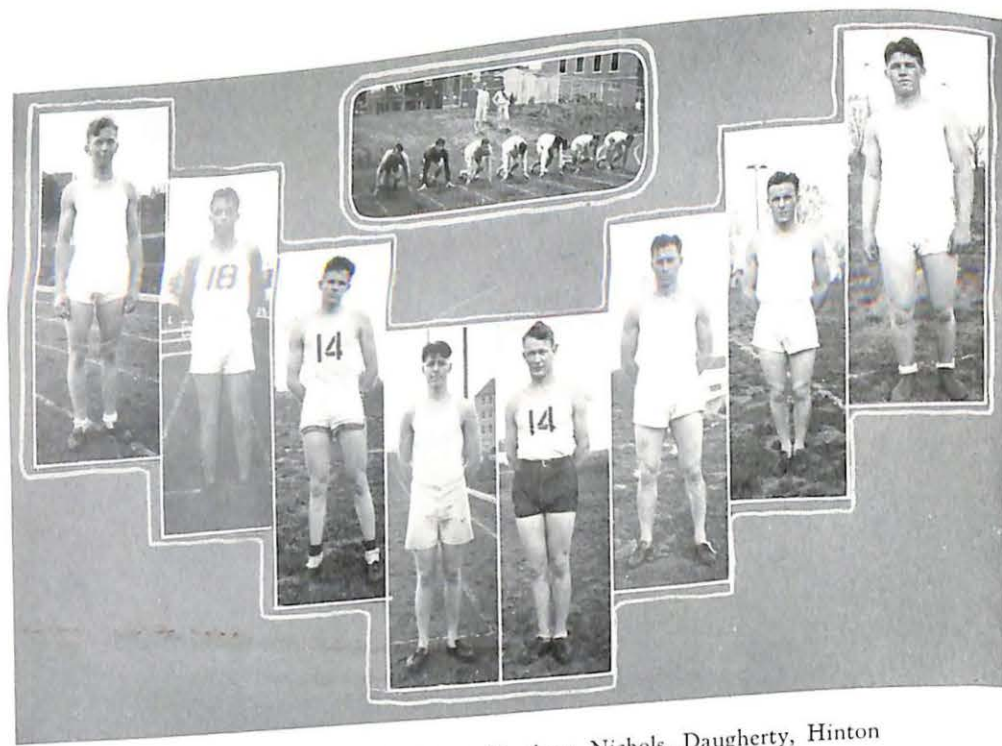
Standing: Stevenson, Reidenbach, McCollum, Coach Godfriaux, Rea, Daugherty, Hains  
Sitting: Humphreys, Sebastian, Long, Duggins, Sparks

S  
A  
B  
I  
D  
U  
R  
I  
A  
of  
1932



## Minor and Women's Sports

The  
A  
C  
H  
I  
V  
E  
M  
E  
N  
T



Steele, Emerson, McDowell, Scott, Goodson, Nichols, Daugherty, Hinton  
Center Top: "On the Line"  
(The Cameraman reports the mere "click" of the camera caused several false starts.)

## The Track Team

THE track team this year was smaller than usual, but its members were all of high calibre, for instance, with only eleven members they were able to defeat Central which had fifty men in its squad, and one of our men was the high point man in the meet.

VIRGIL (DEMUS) DAUGHERTY was the captain for the season and was a consistent scorer during the season. His work was in the high jump, broad jump and the hundred yard dash. He will undoubtedly receive his letter in track.

"PILOT" WILLIAMS is another who not only contributes his prowess to the football team, but also gives his speed to the track team. His work this year was commendable.

M. P. BELL, JR., has again proved himself a genuine "miler." There are few men in the Conference who can rival his speed and endurance in this grueling type of track work.

BILLY GOODSON, besides being an excellent student, has proved himself to be quite capable at throwing the discus. His work points toward a letter for the year.

WILLIS MCDOWELL runs relays, pole vaults, and throws the javelin. He has shown up well in all three of these events.

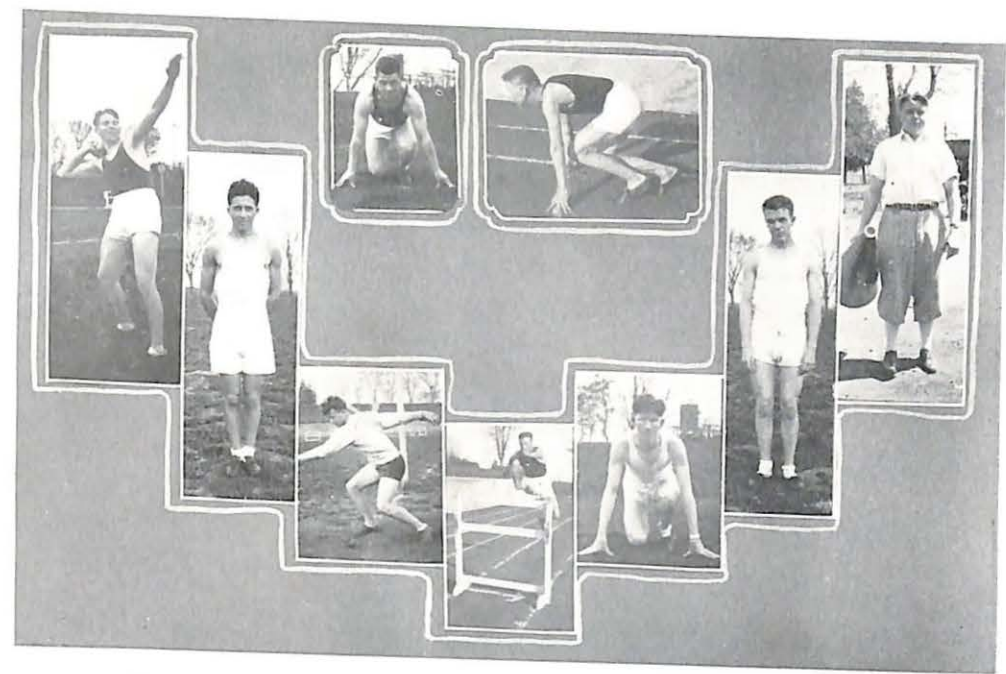
BASH NICHOLS holds his own as the shot putter of the team. At the Central meet he put the shot 37 feet 5 inches to take first.

FRESHMAN PETE REA has shown himself to be a pole vaulter and high jumper of no mean degree. His work was very good during the season.

Undoubtedly the most outstanding man of the team this year was Wesley Steele. His best work was in the 440 yard dash, the 120 yard high hurdles, and 220 yard low hurdles. He was high point man at both the Kemper and the Central meets, and promises to have that distinction in meets to follow. This is his first year in college track work.

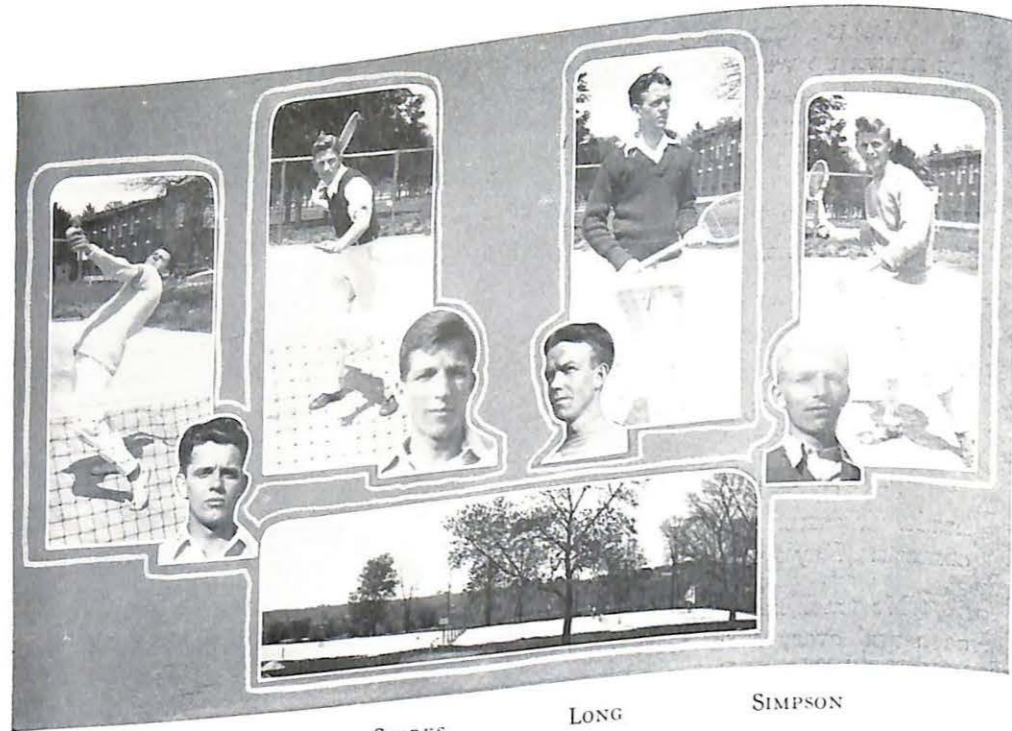
Two other Freshmen on the team are Richard Freeman, and Roy Gerhardt. Freeman has done good work as a runner, especially in the 880 yard contests. Roy's work looks quite promising.

No track meet would be complete without "Frog" Doughty announcing each and every event. He shows great promise of being a serious rival to "Colonel" Walter Robertson.



Rea, Bell, Williams, Steele, Freeman, Doughty, Goodson, Steele, Gerhardt

S  
A  
B  
I  
D  
U  
R  
I  
A  
of  
1932



COMASCHI

SPARKS

LONG

SIMPSON

### The Tennis Team

CONSIDERABLE interest was manifested in the sport this season. Through elimination contests, the following men became the Varsity team:

LOUIS COMASCHI: Ranking No. 1, and Manager of the team. His service is accurate as well as unusual, and he plays a thinking game. His place shots are good.

CHARLES SPARKS: "Charley" is a hard and accurate driver, despite his size. His fast service gives trouble to many of his opponents.

RAYMOND LONG: A sturdy conscientious player, with a spirit of "never give up". His net game is deadly.

CHARLES SIMPSON: A Freshman, "Suitcase" Simpson succeeded in making the Varsity Team. He is a promising player.



MISS MARJORIE ROBERTSON  
Director  
Women's Physical Education Department

### Women's Physical Education

UNDER the capable direction of Miss Marjorie Robertson, the women's physical education department this year has been outstandingly efficient in its work.

Every phase of the department has been fully developed, including regular physical education work, and intramural competition in games of basketball, indoor baseball, hockey, volley ball, tennis, and track.

Special classes in tumbling, mat work, apparatus, folk, tap, and ballet dancing gave exhibition of their work in "The Pirate Phantasy" presented this year in co-operation with the W. A. A.

During the second semester, Miss Robertson introduced on the campus a new sport for women. It was that old Indian custom of Archery. It has proved one of the most popular of activities.

Even greater scope will be given to this department next year with the announcement that majors and minors will be given upon the candidate fulfilling certain science requirements.

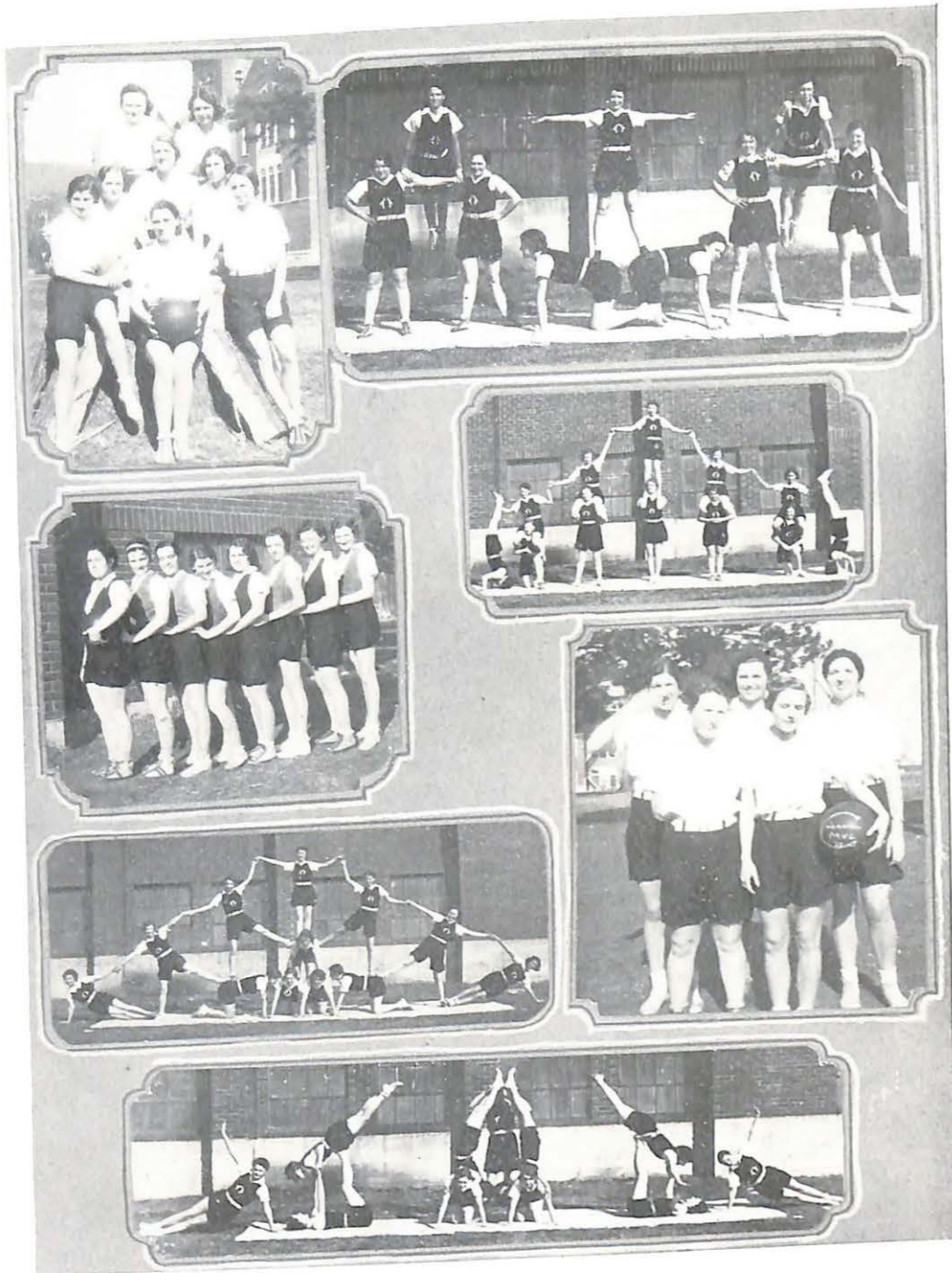


The

ACADEMIC

MISSOURI VALLEY COLLEGE

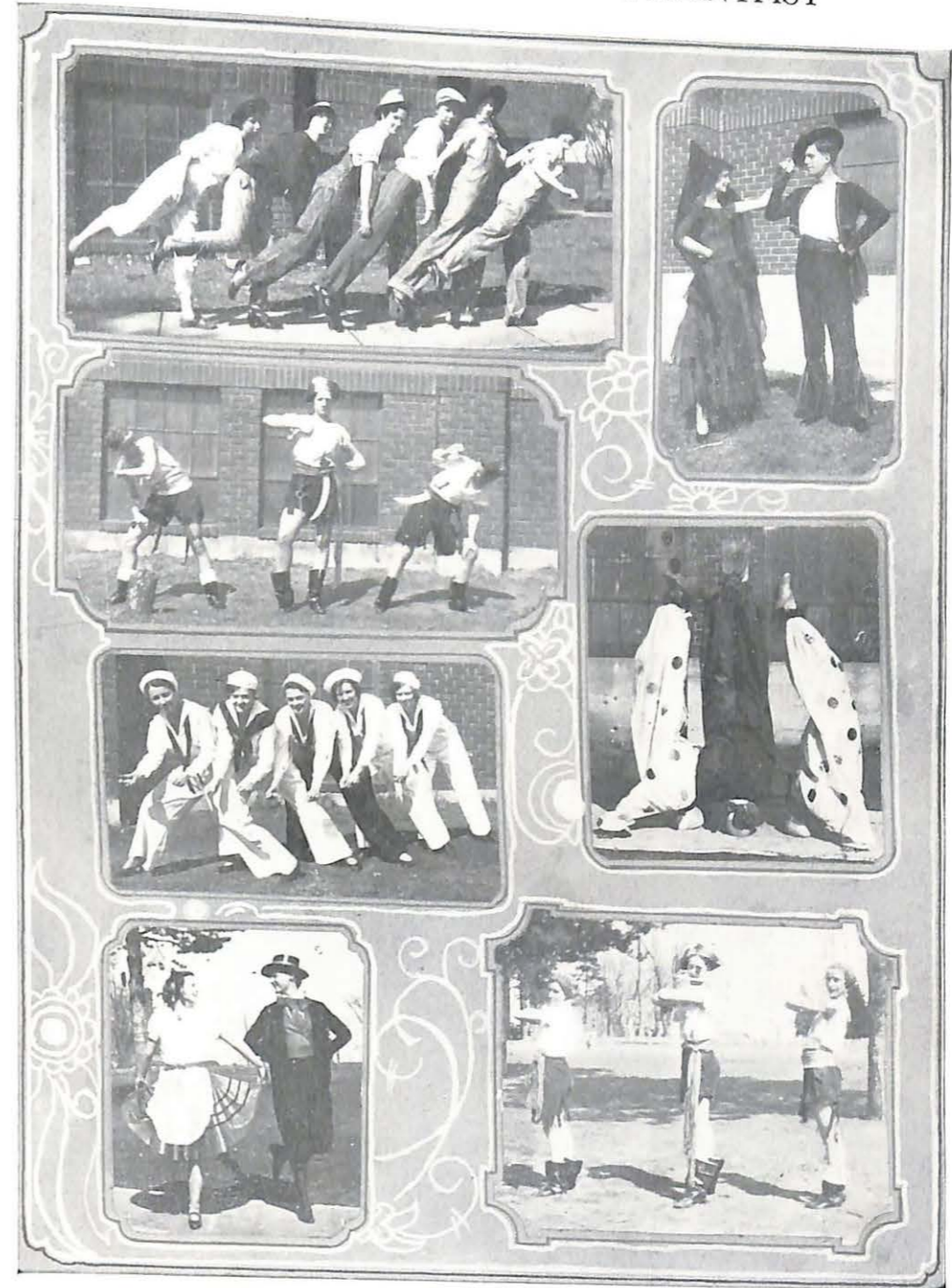
WOMEN'S PHYSICAL EDUCATION



1. Sophomore Basketball Team; 3. Freshman Team; 6. Junior-Senior Team  
Pictures 2, 4, 5 and 7 Show the Tumbling Team in Action

MISSOURI VALLEY COLLEGE

VIEWS FROM "THE PIRATE PHANTASY"



1. The "Arkansas Travelers"; 2. Spanish Dancers; 3. The Bad Bold Pirates; 4. Topsy-Turvey  
Clowns; 5. The Merry Sailors; 6. Irish Waltz Cloggers; 7. Another View of the Pirates

SABIDURIA of 1932

Sport Statistics for Year 1931-32

FOOTBALL		Opp't Score	Vikings Score
SEPT. 25.	Warrensburg Teachers at Warrensburg, night.....	0	6
OCT. 2.	Kemper M. A. at Marshall, night.....	7	51
OCT. 9.	Rockhurst College at Kansas City, night.....	6	0
OCT. 16.	Missouri U. "B" at Marshall, night.....	20	7
OCT. 23.	Drury College at Marshall, night.....	0	7
OCT. 30.	Wm. Jewell at Marshall, Home-Coming.....	0	0
NOV. 7.	Westminster at Fulton, day.....	27	13
NOV. 13.	Baker University at Baldwin.....	7	13
	Thanksgiving—Central College at Marshall.....	0	55
Total Score.....		67	152
Won 5, Lost 3, Tied 1. Second Place in Conference			

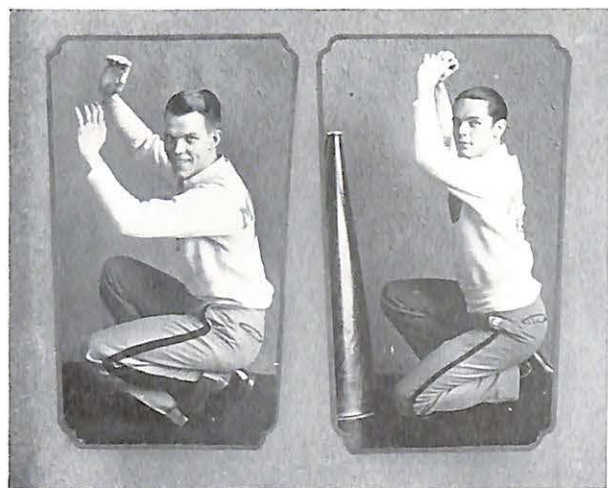
BASKETBALL			
DEC. 17.	Kemper at Boonville.....	7	19
JAN. 2.	Rockhurst at Kansas City.....	35	22
JAN. 1.	Missouri University "B".....	31	14
JAN. 12.	Kemper at Marshall.....	16	32
JAN. 16.	Wm. Jewell at Marshall.....	40	18
JAN. 22.	Rockhurst at Marshall.....	21	16
JAN. 28.	Westminster at Marshall.....	20	16
FEB. 2.	Drury at Marshall.....	34	16
FEB. 4.	Culver-Stockton at Marshall.....	29	25
FEB. 11.	Tarkio at Marshall.....	21	18
FEB. 12 and 13.	"V" Club Invitation H. S. Tournament— Independence wins tournament.....	26	10
FEB. 15.	Central at Fayette.....	20	18
FEB. 18.	Wm. Jewell at Liberty.....	34	26
FEB. 19.	Tarkio at Tarkio.....	36	15
FEB. 22.	Westminster at Fulton.....	35	21
FEB. 25.	Central at Marshall.....	35	21
MARCH 3, 4, 5. M. C. U. Tournament—Won 2, Lost 13.			

TRACK

Lost meet with Kemper, won meet with Central with 62 1/3 to 59 2/3 score.

TENNIS

Lost two meets with Kemper.



BOB DUNN

CLAUDE RATLIFF

*Edwards:*

*Here's hoping you make  
luck and success.*

*George Brock.*

Our Advertisers

S  
A  
B  
I  
D  
U  
R  
I  
A  
of  
1  
9  
3  
2

The

ACHIEVEMENTS

MISSOURI VALLEY COLLEGE

*Dear Miss: I am writing you on this day... I hope you are well... I have been thinking of you often... I hope you are happy... I have been thinking of you often... I hope you are happy... I have been thinking of you often... I hope you are happy...*



MISSOURI VALLEY COLLEGE

Its

President, Faculty and Trustees

Offer good wishes to the Class of 1932 as they go out from our midst to enter life's active work;

Say au revoir to old students till next September calls us together again; and

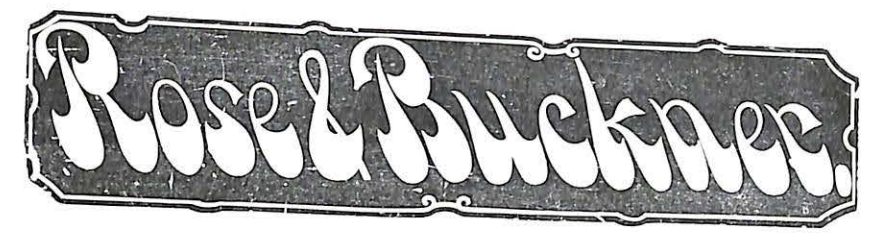
Welcome to the campus the graduates of high schools who shall compose incoming freshman class—the Class of 1936.

MISSOURI VALLEY COLLEGE

# We Grew Together

THIS STORE AND MISSOURI VALLEY COLLEGE STARTED YOUNG TOGETHER

For Over Forty-two Years the Big Shoe and Clothing Store in Marshall



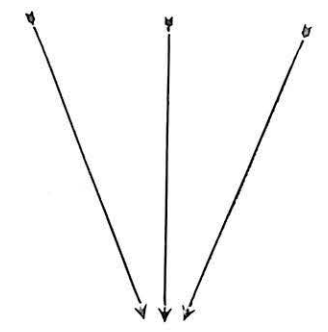
VANDIVER MORTUARY  
AMBULANCE SERVICE

PHONE 54

*Barber*—Trying to raise a mustache are you sonny?

*Braden*—Well-er-you see it's this way, after cutting my hair I want you barbers to say "thank you Sir" instead of "thank you Miss".

SCHOOL SUPPLIES  
All Roads Lead to



FISHER'S  
FISHER'S BOOK & PTG. CO.

SABIDURIA of 1932

YOUR CHECKING AND SAVINGS ACCOUNT SOLICITED

# WOOD & HUSTON BANK

MARSHALL, MO.

Member of Federal Reserve System

SAFETY DEPOSIT BOXES FOR RENT

Capital and Surplus . . . . . \$300,000.00

Eat  
AL'S BREAD

SEVERAL  
VARIETIES

SLICED OR UNSLICED

WILLIAM'S AUTOMATIC  
OIL BURNERS  
FUEL OIL  
FRIGIDAIRE  
SKELGAS

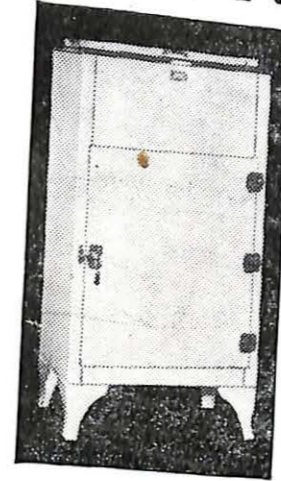
## C. F. ROSS

116 N. JEFFERSON  
MARSHALL MISSOURI

# THE NEW ICIERE

(Pronounced Icy Air)

## The Last Word In Refrigeration



In Style, Appearance, Convenience, Performance and Sanitation

A constant temperature of from 40 to 50 degrees, which will properly preserve foods without destroying their natural flavors, with an adequate supply of broken ice for table use at all times.

Now on Display in Our Showrooms

Sold on Convenient Terms

# MARSHALL ICE & FUEL CO.

TELEPHONE 31

## MONETTE'S BEAUTY SHOPPE

Inspected and approved by the  
State Board of Health

PHONE 164

MARSHALL

MISSOURI

WALL PAPER PAINTS

GIFTS

## J. P. JOHNSON

WINDOW SHADES

DRAPERIES LINOLEUM

Berning—And you say, dear, that if I come in late at night after we are married, I'll be treated like a king.

Becky—Yes, you'll be kicked out.

The  
A  
C  
H  
I  
L  
L  
V  
E  
M  
E  
N  
T

S  
A  
B  
I  
D  
U  
R  
I  
A  
of  
1932

The

MISSOURI VALLEY COLLEGE

**J.C. PENNEY CO. INC.**  
DEPARTMENT • STORE

*Dry Goods  
Ready-to-Wear  
Notions--Shoes  
Furnishings*

FOR THE FAMILY

Also

SCHOOL SUPPLIES  
DRUG SUNDRIES

NORTH SIDE SQUARE  
MARSHALL, MO.

MISSOURI VALLEY COLLEGE

EFFICIENCY IN THE KITCHEN  
Means  
ECONOMY IN THE HOME

COOK AND HEAT WITH GAS

If it's done with heat, you can do it better with gas



18 -- PHONE -- 18

JOHN T. DAVIS, Ph.G.  
"Your Druggist"

MARTHA WASHINGTON  
CANDIES  
ELIZABETH ARDEN  
TOILETRIES



Everything a first-class  
drug store should have

SUNSET SIDE OF SQUARE

MARK BROS.

COOK'S PAINTS  
WALLPAPER  
GLASS and  
STATUARY



Estimates Free



PHONE 62 172 S. JEFFERSON

A  
C  
H  
I  
L  
V  
E  
M  
E  
N  
T

S  
A  
B  
I  
D  
U  
R  
I  
A  
of  
1  
9  
3  
2

The

A  
C  
H  
I  
L  
L  
V  
E  
R  
M  
E  
N  
T

MISSOURI VALLEY COLLEGE

BELL'S READY-TO-WEAR SHOP

Better for Less

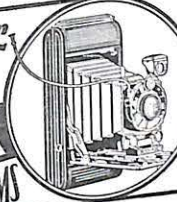
LADIES' READY-TO-WEAR AND MILLINERY

NORTH SIDE SQUARE

MISSOURI

MARSHALL

YOU Press the button we do the rest  
QUICKER SERVICE  
LOWER PRICES  
BETTER PICTURES



WE SAVE YOU MONEY  
FILMS  
ANY 6 or 8 EXPOSURE ROLL DEVELOPED & PRINTED  
VICTOR PHOTO SERVICE  
BOX 970 - KANSAS CITY, MO.

25¢

KODAK MAIL US YOUR FILMS

WELLS & DURRETT

GROCERIES

SOUTH SIDE SQUARE

PHONE 158

W. Y. LOCKRIDGE

LIFE INSUR.



Judge—Witness says that you neither slowed down or tried to avoid the pedestrian.

Lentz—I took all precautions. I blew the horn and cursed him.

MISSOURI VALLEY COLLEGE

S  
A  
B  
I  
D  
D  
U  
R  
I  
A  
of  
1932



ICE CREAM SHERBETS  
PURE, FRESH, HOME-MADE CANDIES

We are exclusive agents of

MRS. STOVER'S BUNGALOW CANDIES  
LUNCHEONETTE and FOUNTAIN SERVICE

RICHMAN'S  
STYLE SHOP

SOUTH SIDE SQUARE

MARSHALL

Mo.

DANIELS

LUMBER COMPANY

Everything the Builder Needs



PHONE 137

R. M. PHILLIPS, Manager

COLLEGE CROFTER'S  
CORPORATION

Class Rings, Pins, Commencement  
Invitations

Official Manufacturers of Valkyr Pins  
and Standard M.V.C. Rings  
Alumni may order this ring for \$9.50  
with their class year shown  
Write for information

GRAPHIC ARTS BLDG.  
KANSAS CITY MISSOURI



Where your clothes are washed in pure soft water, insuring fine work at low prices

56-62 W. MORGAN STREET

FRED DOAN, Manager

Compliments  
of  
Missouri Valley  
Stores Co.

FROZEN GOLD  
CREAM OF CREAMS

Manufactured by

MISSOURI ICE CREAM  
COMPANY

MARSHALL

MISSOURI

*Hammer Edmonds*—I know of nothing worse than finding hair in my soup.



*Waitress in dining hall*—Well it would be worse wouldn't it to find the soup in your hair.



"Marshall's Newest and Finest Drug Store"

Complete stock of Drugs, Sundries, Magazines,  
Cosmetics and Page and Shaw Candies

Your prescriptions will be filled by  
College Graduates exactly as ordered  
by your Doctor

OUR SUPERIOR FOUNTAIN and LUNCHEONETTE SERVICE  
WILL PLEASE YOU

Students and Faculty of Missouri Valley College are always welcome  
and we guarantee Quality, Courtesy and Service always

*We are as near to you as your telephone*  
*Free delivery day or night*  
PHONE 254

BAMMAN & SCOVERN

Graduates of Pharmacy

PHONE 254

SOUTHWEST CORNER OF SQUARE

ESTABLISHED IN 1870

# FARMER'S SAVINGS BANK

MARSHALL, MISSOURI

Safe deposit boxes for rent in our strong, new Steelcrete Vault,  
protected by 16-inch solid metal Mosler triple time-lock door.  
In Our New Banking Quarters We Have Every  
Modern Banking Facility

WE CORDIALLY INVITE NEW  
SAVINGS OR CHECKING ACCOUNTS

The  
**HANSBRO**  
CONFECTIONERY

WE APPRECIATE THE  
COLLEGE PATRONAGE

NORTH SIDE SQUARE  
PHONE 1440

WE DELIVER

**EWELL'S, INC.**  
GROCERIES ... MEATS  
FRUITS - VEGETABLES

Prices Right  
We Solicit Your Patronage  
EAST SIDE SQUARE  
Phone 63-64-65

MARSHALL MISSOURI

*Julia*—Do you love me still?  
*Harry*—Yes, better than any other  
way.

## MUNICIPAL UTILITIES

Cook With

# ELECTRICITY

for

ECONOMY ... HEALTH  
CONVENIENCE - CLEANLINESS  
and  
LOYALTY

PHONE 49

110 E. ARROW

### MARSHALL FLORAL CO.

Flowers, Plants and Floral Designs

Complete Landscape Department

WE TELEGRAPH FLOWERS ANYWHERE

MARSHALL MISSOURI

*Jo Evans*—You didn't shave this evening dear.

*Jeter*—No dear, I shaved this morning, and it makes my face sore to shave twice a day.

*Jo*—Well it makes my face sore when you shave only once.

EDUCATION  
IS ONLY A  
STEPPING  
STONE  
TO  
KNOWLEDGE  
WHICH  
PROPERLY  
APPLIED  
IS  
WISDOM

### CARLSTROM'S

Quality Jewelers  
SOUTH SIDE SQUARE  
MARSHALL MISSOURI

The

A  
C  
H  
I  
L  
L  
E  
V  
E  
L  
M  
E  
N  
T

# THE DEMOCRAT NEWS PRINTING COMPANY

Appreciates the patronage it has had the last year from Missouri Valley College and its students

This company stands ready at all times to serve the college and its students in what ever capacity its assistance may be sought



THE DEMOCRAT NEWS PRINTING COMPANY  
MARSHALL, MO.

ROSIER N. HAINES, *President*

GEO. T. DUGGINS, *Secretary*

## BROOK'S TRUCK CO.

*Insured Transportation*

PHONE 423

MARSHALL, MO.

FAST FREIGHT and  
REFRIGERATOR SERVICE

KANSAS CITY

MARSHALL

Have your shipments  
sent to

SHIP-BY-TRUCK CO.

EIGHTH & HICKORY

## LA CROSSE LUMBER CO.

*Since 1880*

We are pleased to have done our part in building up this community

PHONE 7

MARSHALL

MISSOURI

*Father*—What's the trouble Robert, why so poor grades this time?

*R. Borberg*—There's no trouble at all. Things are always marked down after the Christmas holidays.

S  
A  
B  
I  
D  
U  
R  
I  
A  
of  
1932

## BROWN & REID

*The Hallmark Store*

DIAMONDS --- WATCHES  
JEWELRY

The Largest Stock  
in Saline County

GOOD GOODS ONLY

*Established Forty-eight Years*

NORTH SIDE SQUARE

MARSHALL

MISSOURI

PACKAGE CANDY  
WHITMAN — LIGGETT

## RED CROSS PHARMACY

G. C. WATERS, *Proprietor*

THE *Rexall* STORE

KODAKS, PRESCRIPTIONS,  
SODA WATER, AMATEUR  
FILM DEVELOPING

PHONE 250

MARSHALL

MISSOURI

## COLVERT BROS.

WE HANDLE

Old Ben and Purity Coal  
Coke, Wood, Tile, Crushed Rock  
and Sand

*Truck Hauling*

OFFICE PHONE 89

YARD PHONE 76

*News Note*—

A cat fell into a milk can at Young Hall last night, but fortunately was rescued from a watery grave.

## VAN DYKE & COMPANY

LOANS—INSURANCE  
ABSTRACTS

Money on Hand  
for Good Loans—  
Good Loans on  
Hand for Investors

PHONE 123