

MISSOURI VALLEY COLLEGE



3 7010 00239653 5

# SABIDURIA



MVC  
378  
Sal  
1935  
c.2

# 1935

**THE  
MABIDURIA**

# FORWARD

The 1935 *Sabiduria* embodies you today, as you have been in your classes and activities.

Though we respect the past, and hope for the future, we are proud of our present with its work, ambitions, dreams, and accomplishments.

These we have tried to record for you. Our most sincere hope is that now and always these records will make you smile in happiness over pleasant memories.

Elizabeth Winn, Editor  
Paul Barnhill, Business Manager

6/52

36924  
c.2

# DEDICATION

To the personalities on this campus from its founding, 1889, to its present, 1935. Those young men and young women whom a Prometheus generously endowed with the gifts of leadership, originality, farsightedness, and love of mankind.

This *Sabiduria* honors those students whose names, written on this brick, that desk, that book, are also written in the archives and in the hearts of every Viking. But more than that those names are written into every accomplishment of our college.

This *Sabiduria* honors today's leaders; today's lovers of Viking spirit; Viking activities; Viking possibilities.

So, to the athlete and the debater, the actor and the secretary, the journalist and the musician, the orator, the preacher, the administrator, we clasp your hand and say, "Thanks for making our school a better place to 'laugh, and live, and love'".

# GRATITUDE



Your friend  
J. Newton

## *Dr. Isaac Newton Evrard*

"I wept as I remembered how often you and I  
Had tired the sun with talking and sent him down the sky.  
Still are thy pleasant voices, thy nightingales awake,  
For Death, he taketh all away, but them he cannot take."

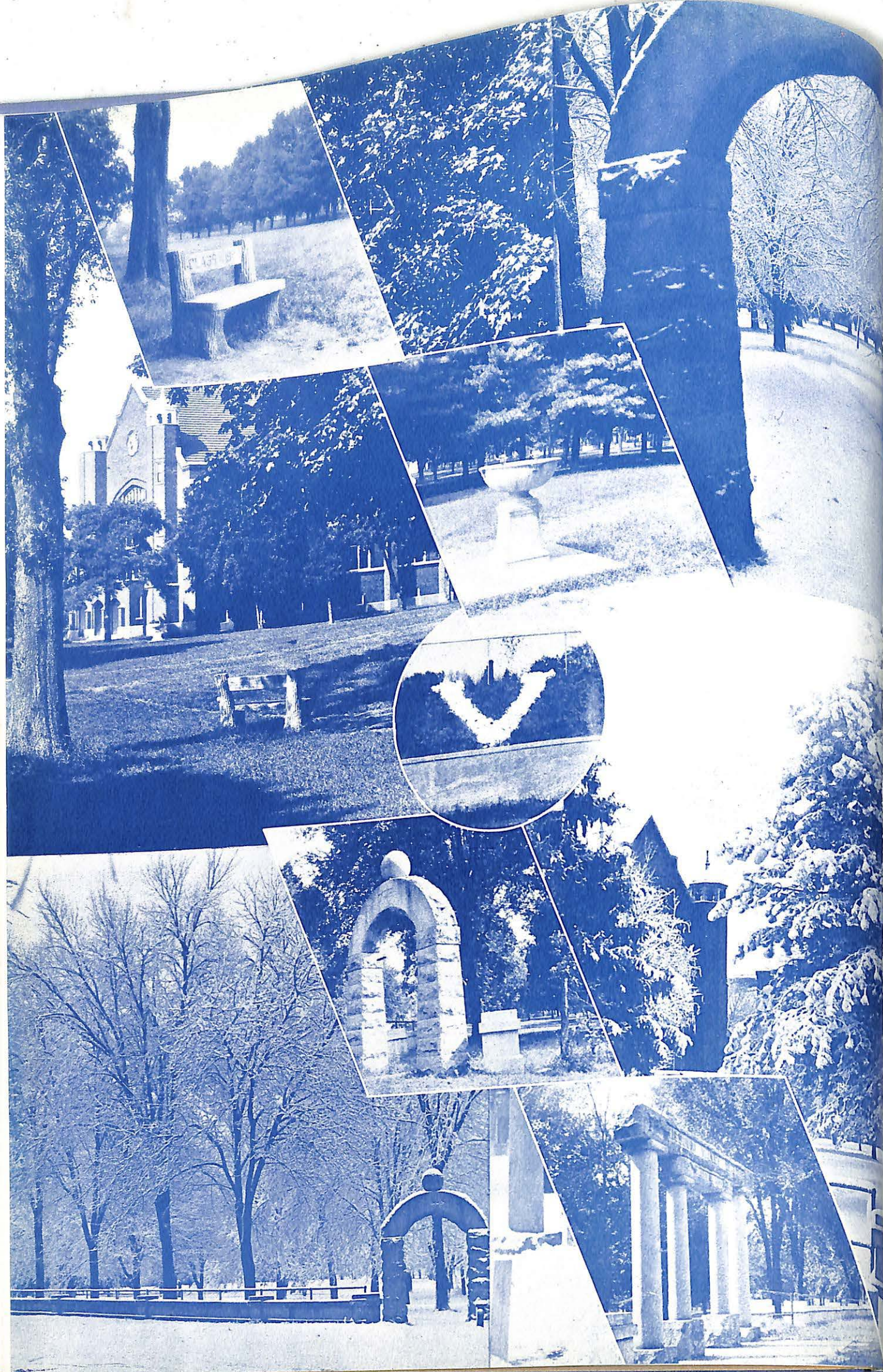
Months have passed since we last saw you smile, and  
felt your hand upon our shoulders, and listened to your  
Bion-like voice. But we have not forgotten. As so many  
men and women, that you knew and loved and read from,  
have become giants after their earthly life, so have you  
grown beyond all measure in our minds and hearts. An  
inspiration! A happy memory! A Christian gentleman!

"Ye plants, now stand in tears; murmur, ye groves;  
Ye flowers, sigh forth your odours with sad buds;  
Flush deep, ye roses and anemones;  
And more than ever now, O hyacinth, show  
Your written sorrows;—the sweet singer's dead."

# CONTENTS

FEATURES	7
ADMINISTRATION	23
CLASSES	31
ORGANIZATIONS	47
ATHLETICS	67
CAMPUS LIFE	79
ADVERTISEMENTS	85





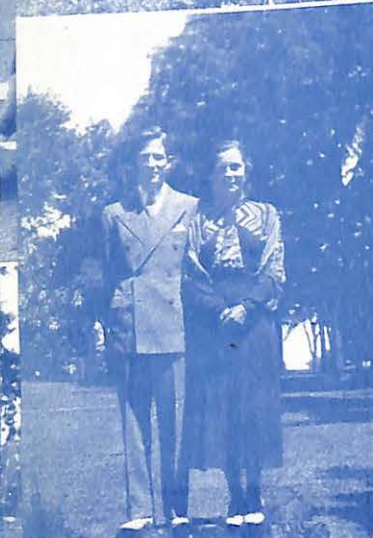
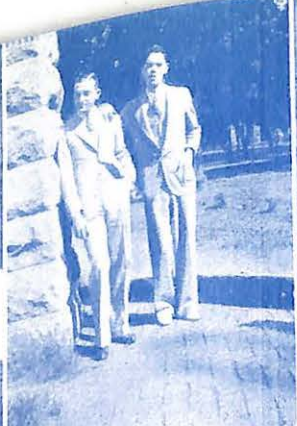
Noon, one January day; artists on the creek bank, Johnson and Baldus; William and Mary out for some air; May Fete dancers, editor "Liz" Winn on the right; ups and downs of Campbell girls; Doneghy and Jackson nearly die laughing; queens; Ham, our president; Marian and Bill; Hi-de-ho; Alpha Delta Kappa; "You're out!"



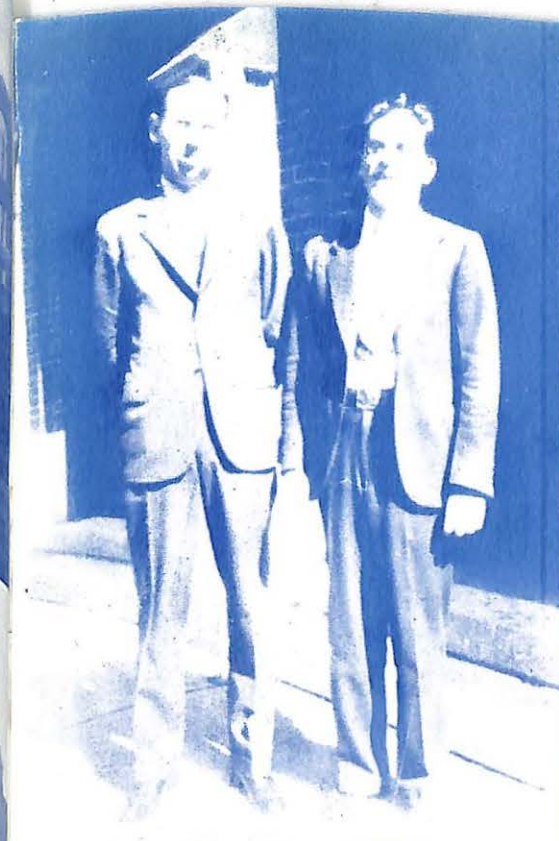
Hudson and McDowell; Tapp and Koller; Trailers; Willard Ethridge wins oratorical contest; Campbell and Young hall sweethearts; December; Our male mail man; Buge and Bash; unofficial quartette; Young mascot; Kitty Sue and Bob; Traughber and Digges Morgan and Jo; Lazy days are here.



Pulling hard; Jean Guthrie tells the frosh how; Valkyrs after Sunday dinner; Founders' Day group, Mr. Baird remembered; Dr. Mack on left, Dr. Evrard on right; Bowlin, Almon, Hull, Smith; peek; Miss Opal; yellers at Bill Jewell; Togo, the Italian and Brown; breakfast; Weston and Browder strut down Brunswick.



Sigma Phi girls on Campbell steps; Morgan and Bill again, some people!; the eternal lovers, Alma and Brownlee resting from cooking class; Jean and Overly; the Grecian dance frieze of the May Fete; Bowlin and Murray; Dot Duncan and tenor Charley Sparks; Harvest queen Marian Kirkpatrick; Nelle and Scott; little Jo, also lost in the country; lost in a fog.



Dean Miller and Rabbi Mayerberg; Billy; chapel; Tommy and horse; skating time; Birkhead cleaning up; loving pals; more loving pals; Teach; S'long; "I will"; top o' the world!



"Yes, yer honor"; Valkyr breakfast for rushees; Freshmen vs. Sophs; where we learn who, why, and where; Birck heads line; Sigma Nu dancers in the gym; Bee, Martin and Irene know spring's here; Marian Hull, the lib girl; Gene, Clay, Belle, Betty and Dave.

# QUEENS



*Our Garden Of Dreams*

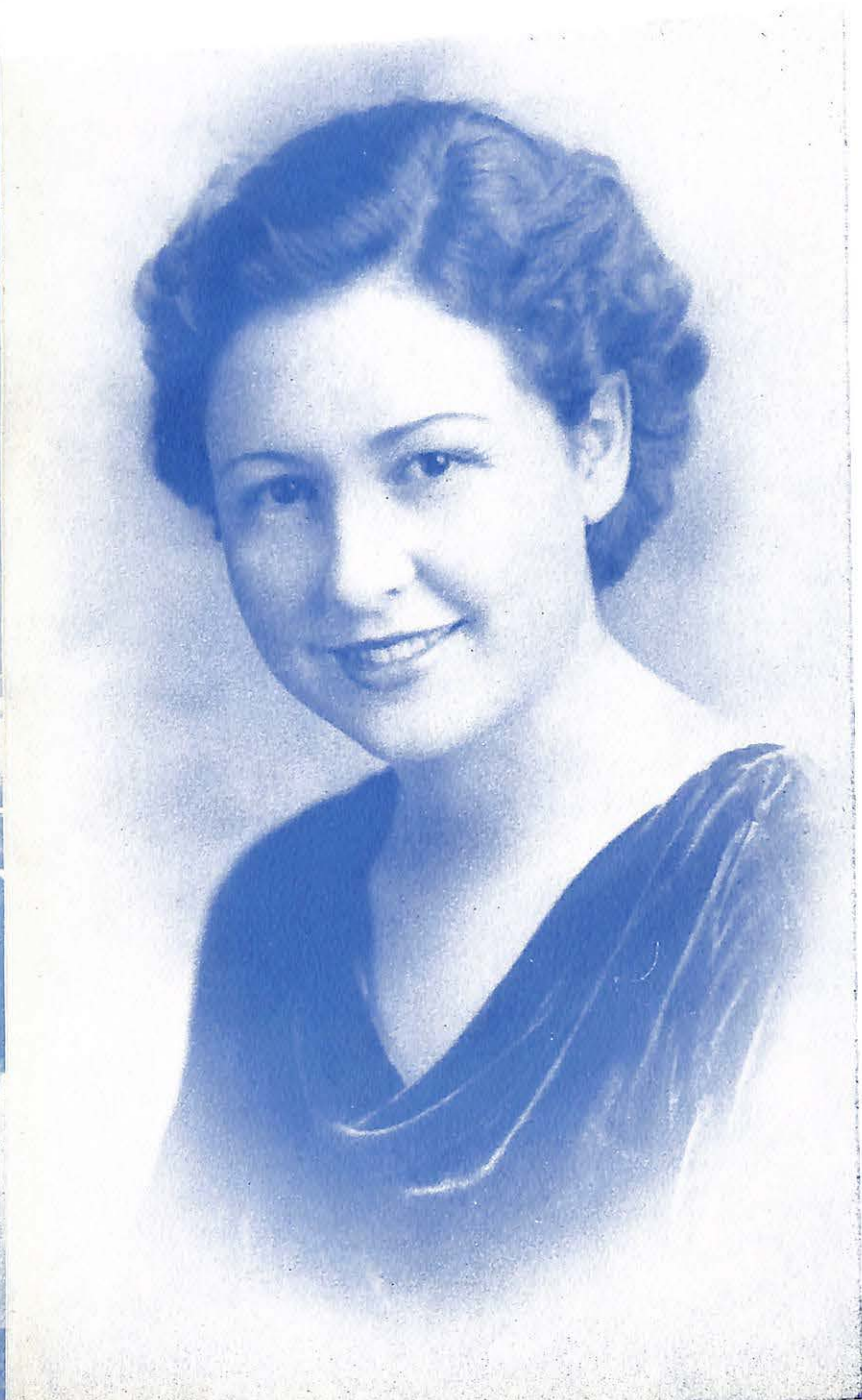
There's a place where we wander at mild eventide,  
A calm place where happiness teems,  
Where queenly content never fails to abide,  
That place is our garden of dreams.  
There odors of Araby mellow the soul,  
And color harmonious gleams,  
And a spirit celestial diffuses the whole  
Of that garden, our garden of dreams.  
Its manifold flowers are faces of friends,  
From one your own countenance beams;  
And that is why happiness over us bends  
When we enter our garden of dreams.

*Isaac Newton Eyrard*



*Miss Katherine Sue Thompson, '36, Valkyr  
May Queen  
Marshall, Missouri*

*Miss Marian Kirkpatrick, '36, Valkyr  
Harvest Queen  
Memphis, Missouri*



*Miss Helen Jane Burruss, '38, Sigma Phi  
Freshman Queen  
Miami, Missouri*

*Miss Jane Miller, '37, Valkyr  
Sophomore Queen  
Sedalia, Missouri*



*Miss Mary Jane Martin, '36, Sigma Phi  
Junior Queen  
Evanston, Illinois*



*Miss Helen Boeger, '55. Valkyr  
Senior Queen  
Morrison, Missouri*







MISS MADELINE ASHTON



MR. HENRI GODFRIAUX



MRS. BELLE C. HUFF

Manitowac, Wis.; Principal, Wakefield, Mich., High School; Superintendent of Schools, Bayfield, Wis.; Assistant Education, Wisconsin University; Education, Registrar, M. V. C. Madeline Ashton: B.A., Kansas University; M.A., Smith College; University of Geneva; Sorbonne, Paris; Ph.D., Illinois University; French and German, John Burroughs, St. Louis; French and Spanish, Hiram College; French, Illinois University; Modern Languages and Literature, M. V. C. Henri Renile Godfriaux: B.A., William Jewell College; M.A., Wisconsin University; Plattsburg High, Marshall High, Director of Athletics, M. V. C. Belle Campbell Huff: B.A., Litt.D., Missouri Valley College; University of Cambridge; London University; Bible, History and English Literature, American Mission Girls' College, Cairo, Egypt; English and History, M. V. C. William Ira Ferguson: B.A., Missouri Valley College; Chicago University; M.A., Missouri University; Astronomer at Morrison Observatory; Astronomy and Greek, College of Wooster; Mathematics, Astronomy, M. V. C. Opal Louise Moore: A.A., Stephens College; B.M.,

PROF. W. I. FERGUSON



MISS OPAL L. MOORE



DR. PERCY JOHNSON



DR. ROBERT HALEY



MISS MINNIE KOPF



DR. CARLE B. SPOTTS

Northwestern University; M.M., American Conservatory of Music, Missouri University; Piano, Millersburg College, Kentucky, and Cottey Junior College; Music, M. V. C. Percy Leroy Johnson: B.S., Maine University; M.S., Syracuse University; Ph.D., Johns Hopkins University; Assistant Zoology, Maine University; Graduate Assistant Zoology, Syracuse University; Graduate Assistant Zoology, Adams T. Bruce Fellow, Research Assistant, Johns Hopkins University; Biology, M. V. C. Robert Murkland Haley: Washington University; B.A., Harvard; M.S., Oregon State College; Ph.D., Northwestern University; Economics, Oregon State College; Economics, M.V.C. Minnie Kopf: B.A., Cornell College; M.A., Columbia Teachers College; Chicago University; Home Economics, Central Normal College; Assistant Home Economics, Guilford College; Home Economics and Dietitian, M.V.C. Carle Brooks Spotts: B.A., Dickinson College; M.A., Ph.D., Pennsylvania State College; English, Pennsylvania State College; English Language and Literature, M. V. C. William Wallace Malcolm: B.A., Dalhousie University;

DR. W. W. MALCOLM



MISS MARJORIE ROBERTSON



DR. FORREST WESTERN





MR. EMMETT PARSONS



MISS MARY K. YOST



MR. WILEY F. STEEN

Diploma, Presbyterian Theological College, Halifax; B.D., Manitoba College; Ph.D., Hartford Seminary Foundation; Institutional Mission; Secretary Y. M. C. A.; Director of Religious Education, First Congregational Church, Winchester, Mass.; Religion, Philosophy, M. V. C. Marjorie Robertson: College of Idaho; B.A., Oberlin College; University of Iowa; Physical Education Director, Y. W. C. A., Boise, Idaho; College of Idaho; Physical Education for Women, M.V.C. Forrest Western: B.A., Central College; M.A., Missouri University; Ph.D., Pittsburg University; Assistant Physics, Missouri University, Wentworth Military Academy, and Pittsburg University; Research Assistant, Wisconsin University; Physics, University of Pittsburg; Physics, M. V. C. Emmett Lee Parsons: Warrensburg State Teachers College; Ph.B., Missouri Valley College; Teacher in Rural Schools, Pettis County; Assistant Cashier, Bank of Marshall; Executive Secretary, M.V.C.; Treasurer, M. V. C. Mary Kennedy Yost: Secretary to President, M. V. C. Wylie Frederick Steen: B.A., Missouri Valley College; McCormick Seminary; Pastorates at

MISS STELLA B. HICKS

MR. J. CARSON DOWELL

MISS PAULINE ALLEN



MISS PEARL CARDY



MISS BINA CLINE

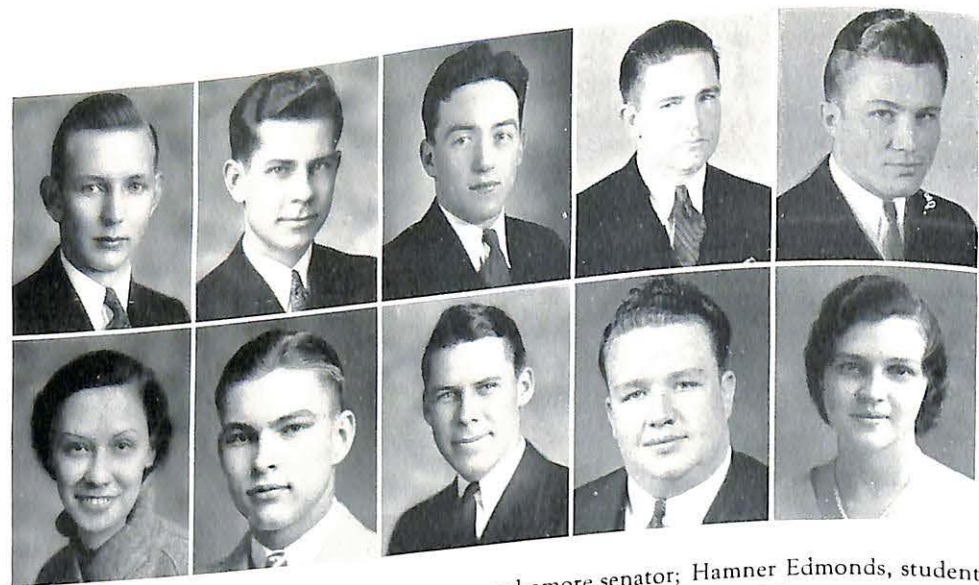


MRS. MAUDE DIGGES

Plain Fields, Ill., and La Platte, Mo.; Field Agent, M. V. C. Stella B. Hicks: Mary Institute; Washington University; M.L., Missouri Valley College; Librarian, M. V. C. John Carson Dowell: B.A., Missouri Valley College; Assistant Treasurer, Accounting, M. V. C. Pauline Allen: R.N., Research Hospital, Kansas City; College Nurse, M. V. C. Pearl Moulton Cardy: B.A., Missouri University; Northeast Missouri Teachers College; Grade School work, Latin, King City; Director of Campbell Hall, M. V. C. Bina Mae Cline: B.S., B.S.Ed., Warrensburg State Teachers College; State Teachers College, Pittsburg, Kans.; Northwestern; Director of William and Mary Hall, M. V. C. Maude M. Digges: B.A., Pritchett College, Glasgow, Mo.; Director of Birkhead Maples, M.V.C.

Instructors Not Pictured: Jack McMillen: Studies in Minneapolis Art Institute and School of Fine Arts, Missouri University; Art, M. V. C. William Benjamin Hert: F.C.M., Dana Institute of Music, Warren, Ohio; Studies under Leffingwell, Wollit, Marcossou, Vaclav Machek; Violin, Dana Institute of Music, Warren, Ohio; Concert Master, ten seasons, Chautauqua New York Orchestra; Violin, Director of Orchestra, M. V. C. Wellington Maupin Westbrook: B.A., William Jewell College; B.S., Missouri University; M.A., Teachers College, Columbia University; Principal, Superintendent, Doniphan and Maryville, Mo.; Superintendent, Marshall, Mo.; Supervisor of Practice Teaching, M. V. C.

Student Assistants: Lila Ruth Breeding: Marysville High School; Chillicothe Business College; Typing, Shorthand, M. V. C. Ruth E. Stout: East High School, Kansas City; Missouri Valley College; Swarthmouth; Northwestern; Dramatics, M. V. C. Louis A. Hansen: Paseo High School, Kansas City; Assistant in School of Music, M. V. C.



Back row, left to right: Robert van der Maaten, sophomore senator; Hamner Edmonds, student body president; Clarence Arndt, president '36; George Yates, senior; Harold Brown, senior; Nell Boatright, junior; Thomas Roberts, freshman; Frank Robertson, sophomore; Charles Smith, freshman; Marjorie Malcolm, senior. Pictures omitted: Merritt Purpus, sophomore; Kay Browder, freshman.

## STUDENT SENATE

With A. Hamner Edmonds, Miami, as president of the student body, and president of the student senate, students enjoyed a better managed social life and more entertaining assembly programs than they had for years. In spite of short funds the senate managed to keep student body expenses to a minimum, and maintain a small surplus, meanwhile carrying on those activities, as well as numerous petty services and duties evolving on them. The senators this year showed a willingness to cooperate with Mr. Edmonds that helped make the year so successful.

Some of the activities of this student-administrative group were: bearing the expense and responsibility of freshman initiation; sponsoring a football banquet at which Miss Marian Kirkpatrick was crowned. Cost of this banquet was greatly reduced.

The Harvest dance was sponsored by the senate, at which function the Freshman football banner was presented by Robert Haas. Music was by Bob Campbell's Chieftains. A novel "skirt dance" was another senate idea: the girls took charge and the social position of men and women was reversed. At the annual Kollege City dance April 27 the music was furnished by Jimmie Dillinger's orchestra from Chillicothe.

This year the senate established a precedent in fewer decorations for student social functions, the decorations heretofore having been elaborate and expensive.

Friday assembly programs were directed by these class representatives. On days when no program was scheduled assembly did not meet; campus organizations presented clever skits as programs during the year.

The Women's Athletic Association and athletic department gave the May fete with the financial assistance of the senate.

In an interesting election this spring Clarence Arndt and Frank Robertson were opponents for 1935-36 president of the student body. Arndt was victorious and promises to materially assist the *Delta*, the social program and other worthy campus activities.



ELIZABETH BOWLIN, Mus.B. *Norborne*  
Three year student.

Sigma Phi, 1, 2, 3, Vice-president, 2, president, 3;  
Y. W. C. A. 1, 2, 3; W. S. G. A. 2, president; Col-  
lege orchestra, 1, 2, pianist, 1; College choir, 1, 2, 3;  
Double sextet, 2, 3.

IRENE SMITH, A.B. *Gallatin*  
Sigma Phi, 4; Y. W. C. A. 4; Campbell Hall  
house council, 4; Honor roll, 4. Park, 1, 2, 3.

ROSEMARY YOWELL, A.B. *Marshall*  
D.A.C. 1, 2, 3, treasurer, 2; Y. W. C. A., 1, 2,  
3; "As You Like It", "Midsummer Night's Dream",  
"School For Scandal", "Whole Town's Talking",  
"Much Ado About Nothing", College choir, 1,  
2, 3.

OVERLY MYERS, A.B. *425 Tracy Ave.  
Kansas City*

Alpha Delta Kappa, 1, 2, 3, 4, Chancellor of  
Council; Y. M. C. A. 1, 3, 4, vice-president, 3, presi-  
dent, 4; Delta staff 2, 4, business manager, 4; Men's  
glee club 1; College choir 1, 3, 4; Kansas City Jr.  
college 2. Who's Who Among American College  
Students, 4.

WILLIAM GALLOWAY, A.B. *806 Grant  
Carthage*

Sigma Nu 3, 4; Y. W. C. A. 2, 3; Sigma Nu Re-  
corder 4; Honor roll 3, 4; Delta staff 2, 3, 4.

ELIZABETH WINN, A.B. *Marshall*  
Editor *Sabiduria*

Pi Gamma Mu 4; Valkyr 1, 2, 3, 4, secretary-treas-  
urer 2, vice-president 4; Forum 2, 3; Y. W. C. A. 1,  
2, 3, 4, cabinet 2, 3, 4; *Sabiduria* staff 3; Delta staff 1,  
2, 3, 4; "Whole Town's Talking", "As You Like It",  
"Much Ado About Nothing", "School For Scandal",  
"Rosalind", "Importance of Being Earnest",  
Women's Glee club 1, 2; College choir 3; Pi Kappa  
Delta 3, 4; Interpretive dancing 3, 4; Who's Who  
Among American College Students, 4.

RUTH STOUT *4214 E. 26 St.  
Kansas City*

Valkyr 1, 2, 3, 4; Y. W. C. A., Northwestern uni-  
versity 3; student director of plays 4; Forum 2.

GEORGE LARUE, A.B. *Marshall*  
Y. M. C. A. 1; Science club 2; Basketball 2; "Mid-  
summer Night's Dream"; *Sabiduria* staff 3, 4.

ARTHUR LONG, A.B. *Malta Bend*

Chi Alpha 4; Y. M. C. A. 3, 4, secretary 4; Bas-  
ketball 3; Tennis ranking 4th, 3, 4; Sextet 4; Or-  
chestra 3; Band 3, 4; College choir 3, 4; Honor roll  
3, 4; Central Wesleyan 1; C. M. S. T. C., 2.

BETH BLACHLY, A.B. *3727 Wyandotte  
Kansas City*

Y. W. C. A. 1, 2, 3, 4, cabinet 2, 3, president 4;  
Editor Delta 3; College choir 3, 4; Student-faculty  
committee 3; student discipline committee 3.





Page Thirty-Four

CHARLES SIMPSON, Ph.B. Mayfair Hotel  
Kansas City  
Sigma Nu 2, 3, 4, marshal 3, lieutenant commander 4; D. A. C. 1, 2, 3, 4, vice-president 4; Pep squad 3, 4; Sabiduria staff 2; Delta staff 2; Tennis 1, 2, 3, 4, ranking number 2; "The Fool", "School For Scandal", "A Doll's House", "Importance of Being Earnest"; Orchestra 1, 2; Band 1, 2; College choir 2, 3, 4; Cheer leader 2, 3; Double sextet 4.

VIRGINIA CATON SAPPINGTON Slater  
Birkhead House council 4; Y. W. C. A. 3.

JOSEPHINE MOORE, A. B. Memphis  
Three year student  
May queen 3; Class queen 1; Valkyr 1, 2, 3, president 3; Pi Gamma Mu 3; W. A. A. 1, 2, 3; Pep squad 2, 3; W. S. G. A. 3; Campbell Hall, House council 2; "Doll Shop"; College choir 2.

MORGAN HILLHOUSE, A. B. 210 West 10  
Carthage  
Vice-president  
Pi Gamma Mu 4; Sigma Nu 3, 4, commander 4; Pep squad, 3, 4; College choir 3, 4.

A. HAMNER EDMONDS, A.B. Miami  
Student Body President 4.  
Delta Kappa 1, 2, 3, 4; Pep squad 1; Delta staff 1; secretary student senate 3; Men's glee club 1; College choir 3; Honor roll 2; Pi Gamma Mu, 4; Who's Who Among American College Students, 4.

MARGARET TOBIN, A.B. Marshall  
Sigma Phi 1, 2, 3, 4; D. A. C. 1, 2, 3, 4; W. A. A. 3; Sabiduria staff 2, 3; "The Fool", "The Whole Town's Talking", "School For Scandal"; vice-president class 3; Women's glee club 1, 2; Quartet 1, 2, 3; Band 3, 4; Sextet 4.

RUTH DUNCAN, A.B. Marshall  
Y. W. C. A., 1, 2, 3, 4; Pi Gamma Mu, 4; Sabiduria staff, 4; Delta staff, 2; College choir, 2, 3, 4; Honor roll, 2, 4.

HAROLD BROWN, A.B. Brookfield  
D. A. C., 2; V club, 2, 3, 4; Young Hall house council, 3, 4; Science club, 2; vice-president, 2; V club treasurer, 3; President Young Hall, 4; Football, 1, 2, 3, 4, captain, 4; "The Fool"; Student senate, 3, 4, secretary, 4; Honor roll, 1, 2, 3, 4; Student assistant in chemistry, 2, 3, 4; Who's Who Among American College Students, 4.

GEORGE YATES, A.B. Yates  
V club, 2, 3, 4; Science club, 2; Football, 1, 2, 3, 4; student senate, 4.

ALMA HUDSON, A.B. 407 East Madison  
Iola, Kansas  
Beta Gamma Phi, 4; Sigma Phi, 3, 4; D. A. C., 3, 4; Y. M. C. A., 3, 4; Secretary, W. S. G. A., 3; vice-president, 4; Sabiduria staff, 3, 4; "Midsummer Night's Dream"; Honor roll, 3, 4. Iola Junior college, 1, 2.

MARY FRANCES ROBERTS, A.B. 5908 Wyandotte  
Kansas City  
Three year student  
Valkyr, 1, 2, 3; secretary and pledge mistress, 2; Campbell Hall house council, 1; Sabiduria staff, 1, 2, assistant business manager both years; Delta staff, 2; College choir, 2, 3; May Fete dances, 2, 3.

DOROTHY DUNCAN, A.B. 3660 Summit  
Kansas City  
Valkyr, 3; Y. W. C. A., 3, 4, pianist, 3; W. A. A. 3, 4, secretary, 4; W. S. G. A.; treasurer, 3; Class queen, 3; College choir, 3, 4; Double sextet, 3.

EDITH LEE JETER, A.B., secretary. Slater  
Pi Gamma Mu, 4; Valkyr, 3, 4; Y. W. C. A., 1; W. S. G. A. president, 4; Campbell Hall house council, 1; Delta staff, 4; Queen attendant, 1; College choir, 3, 4; Honor roll, 1, 3, 4; Accompanist for double sextet, 3; C. M. S. T. C., Summers of 1931, 1932.

MARIANA SMITH, A.B. Marshall  
Valkyr, 1, 2, 3, 4; Pep squad, 1, 2, 3; May Fete, 1, 2, 3; Tumbling, 1, 2, 3; All sports, 1, 2, 3; one semester at F. S. T. C., Fresno, California.

HELEN BOEGER, A.B., Class queen. Morrison  
Valkyr, 3, 4, treasurer, 4; W. A. A., 4; W. S. G. A., 2, 3; Birkhead dormitory president, 4; Sabiduria, 4.

MARJORIE MALCOLM, A.B. Marshall  
Valkyr, 1, 2, 3, 4; D. A. C., 1, 2, 3, 4; Y. W. C. A., 2, 3, 4, cabinet, 1, 2, 3, 4, president 3; "Much Ado About Nothing", "The Whole Town's Talking", "As You Like It", "You and I", "Doll Shop", "Pirate Phantasy", "Sleeping Beauty"; Honor roll, 1, 2, 3; Intrepretative dancing, 1, 2, 3, 4.



Page Thirty-Five



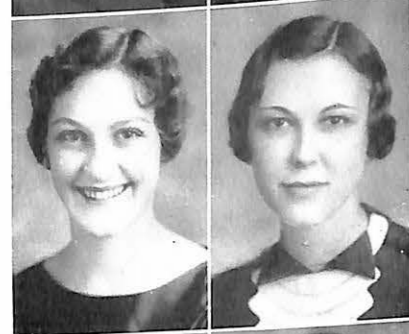
HARRIET JONES  
Carthage

A. B. JACKSON, JR.  
418 Madison  
Jefferson City



MARY JANE MARTIN, Class Queen  
1206 Simpson St.  
Evanston, Ill.

MARY YEAGER  
Marshall



JEAN GORDON  
5827 Charlotte  
Kansas City

CHARLOTTE HOWE, Secretary-  
Treasurer  
2710 Tenth St.  
Wichita Falls, Texas



MARY MARGARET WESTBROOK  
Marshall

RUTH FERGUSON  
Roanoke



NELL BOATRIGHT  
Marshall

ALMA JONES  
Independence

ALVA HUFF  
Augusta, Ill.

MARIAN KIRKPATRICK, Harvest  
Queen  
Memphis

ELLEN LEINBACH  
3435 East Sixtieth  
Kansas City

MORRIS TAPP  
Moberly

JAMES C. WOODSMALL, JR.  
Memphis

ADELINE KOLLER  
Wever, Iowa

KITTY SUE THOMPSON, May Queen  
Marshall

CLARENCE ARNDT, Student  
President '36  
Marshall

MARTIN DYE  
Carrollton

VIRGINIA THWEATT  
Marshall





LATEN CARTER  
Hollister

DOROTHY ROBINSON  
Marshall

RUTH EISENSTEIN  
Marshall

WILLIAM FERGUSON  
Roanoke

LOUIS HANSEN  
5101 Garfield  
Kansas City

LILYAN THURMAN  
Marshall

CLAY BELLE HOUSTON  
Malta Bend

MAURICE SEVEDGE  
308 North Lawndale  
Kansas City

ARTHUR BILY  
1916 South May St.  
Chicago, Ill.

RACHEL McLEOD  
Marshall

JANE MILLER, Class Queen  
Sedalia

JAMES BAKER  
5216 Dorchester  
Chicago, Ill.

LEWIS JOHNSTON  
Mexico

FERN SCRIVNER  
Stover

JUNE GRIMES  
Marshall

PAULINE ALLEN  
1008 E. 26th  
Kansas City

ANN MURRAY  
3300 Coleman Road  
Kansas City

WILLIAM IRVINE  
Marshall

DAVID DEXTER  
4119 Windsor Avenue  
Kansas City

LOIS COLLINS  
Chillicothe

ELIZABETH ERWIN  
Urich

LEWIS McADOW  
Lexington

ROBERT VAN DER MAATEN  
Springfield

INGRID ALMON  
Hamilton

LUCILE McCLURE  
Sedalia

KENNETH FREEMAN  
Roanoke

RAYMOND SULLIVAN  
Miami

LOUISE McCLUNG  
Slater





MARSHALL COFFMAN  
Marshall

BERNICE NORTON  
Drexel

MARY VANCE  
Sedalia

PAUL BARNHILL  
Marshall

MARY LETTA SEARFOSS  
Marshall

MARY BROWN  
Slater

FERN NYE  
Malta Bend

ELEN HAMILTON  
Salisbury

*Miss Yost -  
I've taken a lot  
of "blasting" out of you  
you. I don't want you  
to forget me so I decided  
to give you a reminder.  
Betty*

BETTY HAMILTON  
Deepwater

WILMA DOHRMAN  
Slater

JEAN GUTHRIE  
Macon

MARTHA DONEGHY  
Kirkville

HAYDON DIGGES  
Glasgow

KATE ABNEY  
Napton

MARTHA TRAUGHBER  
Norborne

PHILIP GOODWIN  
Alma

WILLARD ETHRIDGE  
3820 Hyde Park  
Kansas City

ELLEN BUCK  
Marshall

BEE BERRY  
Versailles

ELMER SCHUTTE  
Corder

CHARLES BAKER  
Napton

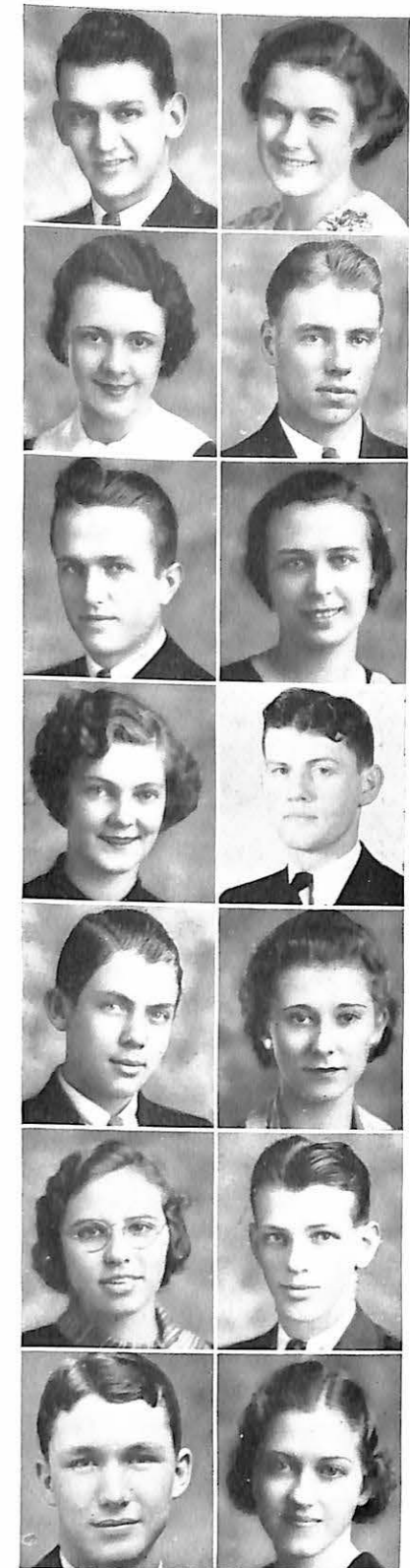
VIRGINIA HARTZELL  
Carrollton

ROWENE HELM  
Odessa

DELL HARLAN  
Salisbury

JAMES LONG  
Malta Bend

ELIZABETH EAKER  
Slater





MARY ANNA WEST  
Annapolis

EUGENE STANWOOD  
Carthage

FRANCIS WILSON  
Marshall

VIRGINIA WILSON  
Malta Bend

MYRTLE LUCAS  
Lexington

GEORGE T. KNUCKLES  
Marshall

HOWARD BECKER  
Alma

NELLE WILKENING  
Odessa

MELBA SPARKS  
Marshall

DALE PAGE  
Slater

WILLIAM AUTENRIETH, President  
Nevada

LUCILLE SCHROEDER  
Curryville

ELEANOR THOMAS  
Marshall

THOMAS ROBERTS  
Carthage

CECIL FRANCIS  
Alma

ANNA MAY KREGEL  
3017 Michigan  
Kansas City

LUCILE CROWDER  
Marshall

PAUL STEPHENS  
Sedalia

HUDNALL HARVEY  
Marshall

HELEN JANE BURRESS, Class Queen  
Miami

GENEVIEVE GLAZEBROOK  
Longwood

JOHN NEWHOUSE  
Independence

LEE CARDY, Vice-President  
King City

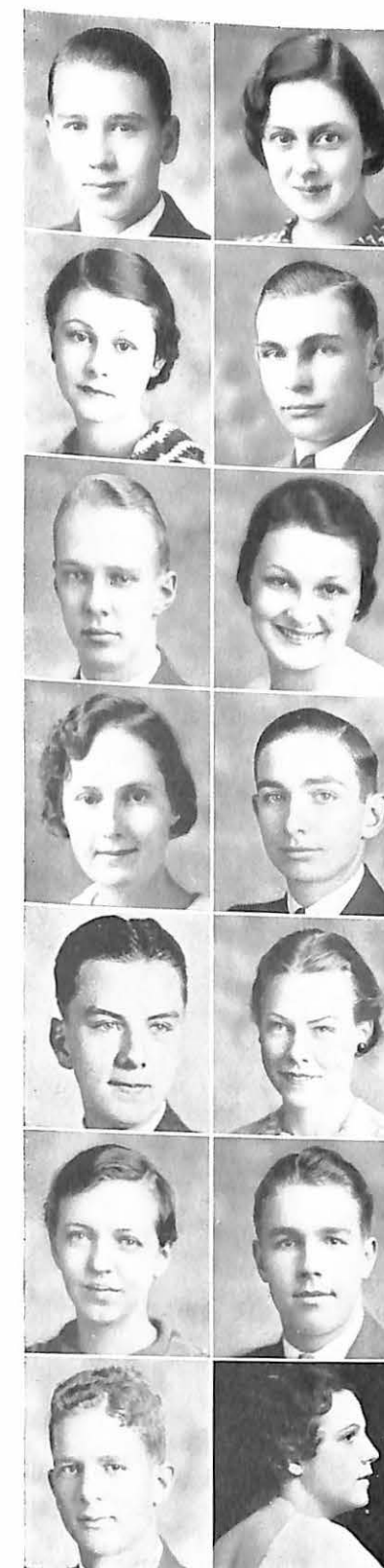
KATHERYN BROWDER  
5910 Arendes Drive  
St. Louis

OLIVIA MARSHALL  
Richmond

HOMER ELMS COOK  
Edina

GEORGE BROWN  
Danville, Ill.

RACHEL MATTHEWS  
Vandalia





HOWARD THOMAS  
Marshall

CHARLOTTE VANDIVER  
Marshall

EDNA SMITH  
Gallatin

CHARLES EWELI  
Marshall

KENNETH WARREN  
Marshall

ERNESTINE HAGGARD  
Marshall

MARY JANE BUCK  
Waverly

RICHARD PATTERSON  
Marshall

BROWNLEE HILL  
Brookfield

MAXINE REID  
Marshall

VIRGINIA JONES  
Marshall

ALFRED JENKINS  
Carthage

WILLIAM PRESTON  
Jefferson City

MARY WESTON  
Neosho

NELLIE WENZEL  
Marshall

MARY MARGARET MILLER  
Marshall

JOHN PAUL JONES  
Marshall

LILA BREEDING  
Herkimer

MARIAN HULL  
Washington

JACK COX  
Miami

LEE McCORKLE  
Marshall

GWEN GUNN  
Eldon



## Students Whose Pictures Were Not Available

**FRESHMEN:** Howard Bearce, Harrisonville; Earl Brooks, Marshall; Jay Brown, Odessa; Mel Carnahan, 1216 Arman, Kansas City, Mo.; Marie Dinga, 1123a Rutger, St. Louis, Mo.; Elaine Griffis, Nelson; June Grimes, Marshall; Kile Guthrey, Marshall; Robert Haas, Neosho; Ruth Hains, Marshall; Raymond Hayob, Marshall; John Holic, 1917 South Racine, Chicago, Ill.; Mary Letta Searfoss, Marshall; Wallace Turnage, Marshall; Faber Wickham, 754 N. 74, East St. Louis, Mo.; Isabel Wood, Marshall.

**SOPHOMORES:** James Carr, 120 S. Oakley, Kansas City, Mo.; William Baker, Slater; Harold Emerson, Marshall; Gilbert Holloway, Harrisonville; Homer Leech, Pleasant Hill; Paul Libby, president, Shelbina; Virgil McDowell, Brookfield; Otho Pence, Marshall; Robert Place, Gallatin; Merritt Purpus, vice-president, 5609 Wayne, Kansas City, Mo.; Eugene Sebastian, 3519 Paseo, Kansas City, Mo.; Harriet Shaver, Marshall.

**JUNIORS:** Darrell Cummings, Curtland, Maine; Spencer Glenn, president, Brookfield; J. E. Jenkins, Beaman; Mrs. Marcia M. Johnson, Marshall; Everett Markland, Armstrong; Frank Robertson, vice-president, Yates; Nathan Roitman, 2910 East 31, Kansas City, Mo.; Lloyd Scott, Weston; Robert Wilson, III, Marshall.

**SENIORS:** J. Roger Buck, A.B., class president, Marshall] Pi Gamma Mu, 3, 4, vice-president, 3, president, 4; Delta Kappa, 1, 2, 3, 4, chaplain, 2, 3; chancellor of council, 4; D. A. C., 1, 2, 3, 4, secretary, 3, president, 4; Forum, 1, 2; Pi Kappa Delta, 3, 4, charter member, 3, vice-president, 4; Delta staff, 4; "The Fool", "School For Scandal", "Much Ado About Nothing", "The New Word", "Midsummer Night's Dream", "Important of Being Earnest"; Class secretary-treasurer, 3; College choir, 2; Honor roll, 2, 3, 4; Student assistant in debate, 4; Who's Who Among American College Students, 4.

Robert MacCluney, Ph.B., Marshall  
Chi Alpha, 3, 4; Y. M. C. A., 3, 4; V Club, 3; Preaching, 4.

Carl Frank, A.B., 213 N. Monroe, Kansas City  
Pi Gamma Mu, 4; Delta Kappa, 3, 4; Y. M. C. A., 3, 4; Pep squad, 3; Tennis, 3, 4.





ALMA R. HUDSON

HAROLD BROWN

## BETA GAMMA PHI ELECTS TWO

Beta Gamma Phi is the local honorary senior scholastic fraternity. This year only two members of the senior class were eligible, Miss Alma R. Hudson, Iola, Kansas, and Harold Brown, Brookfield, Missouri.

The basis for membership is an average of 2.3 honor points per semester hour of credit. Election is made by the faculty members at the end of the first semester of the senior year. Students must have been enrolled in Missouri Valley college for two years to be eligible to membership. Miss Hudson had her first two years of college work in a junior college in Iola, while Mr. Brown has had all his four years at Valley. Besides being exceptionally high scholastically both these members have been active in extra-curricular activities. Mr. Brown has been outstanding in athletic and student senate work and Miss Hudson has assisted in the dramatic department and on the *Sabiduria* staff for the past two years.

The purpose of Beta Gamma Phi is to encourage scholarship and to reward those who have complied with its aims. In keeping with this purpose, it is planned to inaugurate a scholastic rivalry among the other organizations of the campus, and to reward the winning groups with a fitting trophy. For several

years the Dean's office has compiled a scholastic ranking of various fraternities, and results have shown Pi Gamma Mu and Pi Kappa Delta exceptionally high; women with higher grades than men, etc.

This is the only fraternity on the campus that is similar to Phi Beta Kappa.

The organization was established in January, 1933, with the election of five members from the class of 1933. These five were Frank Rearick and Misses Jean Perry, Lavinia Lower, Mary Catherine Ryan, and Josephine Evans. Mr. Rearick was elected first president of the group.

Members from the 1934 class were: Robert Sutton, John Billings, and Misses Betty Pettijohn, Margaret Mitchell, and Roxie Brown. Mr. Sutton was president, Mr. Billings, vice-president, and Miss Brown secretary and treasurer.

Since its establishment the fraternity has prided itself on having not only a membership of high scholastic ranking, but young men and women who have talents in extra-curricular interests. The fields of athletics, forensics, dramatics, religion and music have been substantially assisted by various members of Beta Gamma Phi during its short existence.



ELIZABETH WINN, Editor

## ELIZABETH WINN EDITS "SAB"

The *Sabiduria* received its name, back in its first year 1907, from the old Spanish word meaning a collection of knowledge. The first editor was Helen Campbell, who, that same year, was editor of the *Delta*. That first Valley year-book set a precedent, that was followed for many years, of being a highly literary publication. Pages and pages were devoted to original stories and poems by students, and sections such as forensics were given five or six pages. In the

early days the book always had over one hundred fifty pages.

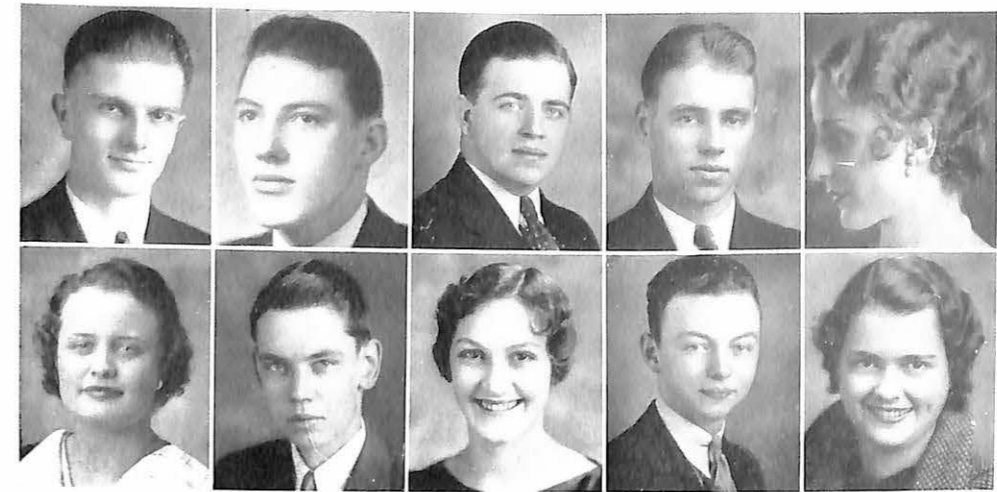
Until 1928 the *Sabiduria* had been published by the Unit Club. Joe Price Frerking edited the first book published by the student senate.

The same general form has been followed in the set-up of the annual. As years have passed certain features have been given more or less space as their importance grew or diminished.

Top row, left to right: Rachel McLeod, associate editor; Alma Hudson, literary; Ruth Duncan, literary; Helen Boeger, snapshot editor; George LaRue, photographer. Bottom row, left to right: Helen Hamilton, senior editor and proof-reader; Mary Yeager, freshman editor; Jean Guthrie, campus life editor; A. B. Jackson, Jr., athletic writer; and James Baker, athletic writer; Jack McMillen, artist; Virginia Thweat, junior; Bee Berry, sophomore.



PAUL BARNHILL, Bus. Mgr.



Left to right: Top row: Overly Myers; A. B. Jackson; James Baker; Philip Goodwin; Elizabeth Winn. Bottom row: Alma Jones; William Galloway; Jean Gordon; Lewis Johnson; Dorothy Robinson.

## HAMILTON PILOTS DELTA

Our present college newspaper differs vastly from its predecessors. Christened the *Delta* in honor of the three literary societies, "Bairdean", "Pearsonian", and "Houxonian", on the campus at one time, it has kept its original name while changing radically in other respects as time has gone on.

First operated by the literary societies the *Delta* was a magazine, supposed to be published monthly, but actually issued at regular intervals. This continued up to 1927, when, because of the new interest of the students in journalism, the conflicting of the magazine and the *Sabi-*

*duria* since the two were much alike, and the fact that the literary societies which had managed the magazine had given way to social clubs, the publication became a newspaper. This newspaper consisted of four pages of book paper, each page containing four columns of print.

In 1928 came big changes—The *Delta* became a bi-weekly; it was printed on regular news print paper; five columns of print to a page were used, which gradually increased to the present number of eight. Last year marked the beginning of a growth of the *Delta* which has continued



by leaps and bounds to the present. The standards of the *Delta* since then have constantly risen, and the *Delta* has come to be outstanding among college newspapers of this region. Because of this, *Delta* staff members have been honored since 1928 by a number of offices in the Missouri College Newspaper Association, among them the presidency of that body, and one year the *Delta* placed first among the college papers of the state.

This year the *Delta* was under the supervision of Professor Robert Burlingame the first semester, and Dr. Carl Spotts the second. Miss Helen Hamilton, sophomore, Salisbury, Missouri, was editor, and Overly Myers, senior, Kansas City, served as business manager.



Top row: J. R. Buck, president, J. Moore, N. Boatright, E. Jeter, R. Duncan. Second row: E. Winn, M. Hillhouse, V. Thweatt, A. Huff, R. Ferguson. Third row: A. Bell, Prof. R. O. Hale, B. Jackson, Prof. J. C. Dowell, Miss M. Robertson. Fourth row: Dr. C. L. Miller, Mrs. B. C. Huff, Mr. R. S. Burlingame, Mr. E. L. Parsons, Dr. W. W. Malcolm, President G. H. Mack.

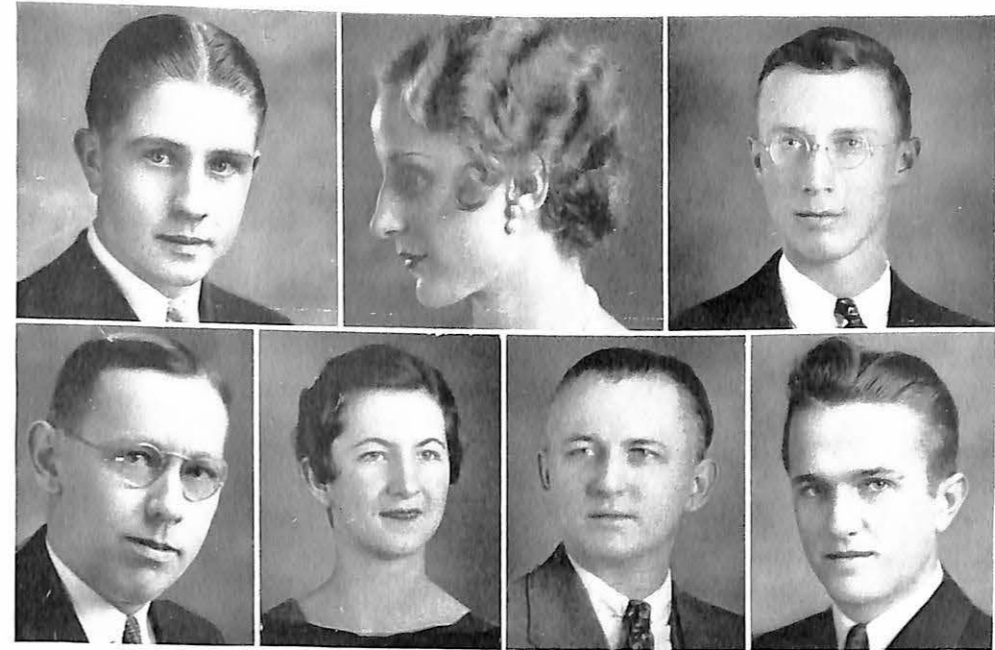
## PI GAMMA MU PROGRESSES

The Missouri Zeta chapter of Pi Gamma Mu, honor social science fraternity, is headed by John Roger Buck, senior, Marshall, as president; Nell Boatright, Marshall, vice president; and John Carson Dowell, Vandalia, secretary-treasurer. The members include: Mrs. V. V. Huff, Miss Marjorie Robertson, President Mack, Mr. E. L. Parson, J. Carson Dowell, Dr. C. L. Miller, Robert S. Burlingame, Morgan Hillhouse, Edith Jeter, Ruth Duncan, Carl Frank, Josephine Moore, John Guthrey, Elizabeth Winn, Virginia Thweatt, Alva Huff, Ruth Ferguson, and Hamner Edmonds.

The first chapter of Pi Gamma Mu was founded in 1924 at Southwestern college, Winfield, Kansas, by Leroy Allen who became the first national president of the organization and served in that office un-

til several years ago. Charles A. Elwood, of Duke university in North Carolina, is now grand president. At present there are over one hundred forty active chapters of Pi Gamma Mu, and this number is constantly increasing.

The fraternity was first brought to Missouri Valley in April, 1931, after a local group had petitioned the national organization for a charter. Since the Missouri Zeta chapter was established here, approximately seventy-five persons are members of the chapter. In the present year ten persons were received into it. The chapter holds monthly meetings and at these times discusses leading social problems, and has outside speakers lecture. Every spring a banquet is held, at which some noted economist is invited to speak.



Top row, left to right: William Ferguson, Elizabeth Winn, J. Roger Buck. Bottom row: Dr. C. L. Miller, Helen Hamilton, Dr. Carle B. Spotts, Willard Ethridge, president.

## FULL PI KAPPA DELTA SEASON

In the spring of 1934 a group of William Jewell Pi Kappa Deltas installed the Missouri Lambda chapter of the national debate fraternity, Pi Kappa Delta, at Missouri Valley College, following a number of years of high records for Valley in debating. The establishment of this fraternity grew out of the "Forum", the campus club which up to this time had included all the debate and oratory students of the college. Dr. Carle B. Spotts was made sponsor of the new organization, and Robert Sutton was the first president.

This year the Missouri Lambda chapter is headed by Willard Ethridge as president, John Roger Buck, vice president, Helen Hamilton, treasurer, and Dr. Spotts secretary. The members include: William Ferguson, Elizabeth Winn, Kenneth Freeman, John Newhouse, Mary Vance, Hudnall Harvey, and Lewis McAdow.

The Valley Pi Kappa Deltas have had

an active, full season the past year. The program of the chapter was as follows:

- Dec. 7, 8—Tournament at Southwestern college, Winfield, Kansas.
- Dec. 13—Tournament at Moberly, Missouri.
- Feb. 8, 9—Missouri college and university tournament at Valley.
- Feb. 8—Leland Stanford vs. University of Missouri debate at M. V. C.
- Feb. 15-16—Tournament at Kansas City School of Law, Kansas City.
- Feb. 16—Debate with Tarkio college at Valley.
- Mar. 4—Debate with Drury at M. V. C.
- Mar. 8, 9—Entertained National Forensic league.
- Mar. 13—Debate with Missouri university at Valley.
- Mar. 15—Valley vs. Moberly junior college at Moberly.
- Mar. 23—Central college debate at M. V. C.
- Mar. 27—Debate with Missouri University at Columbia.
- Mar. 28, 29—Pi Kappa Delta regional tournament at Cape Girardeau, Missouri.
- April 13—Debated with University of Kansas City at Kansas City and M. V. C.

The Missouri Lambda chapter as hosts to the Missouri college and university Tournament brought especial honor to Valley not only by its efficient handling of the tournament, but also in that two of its members won the State junior college championship. Highest debate honors this year go to Newhouse and Harvey who are junior college champions.



Back row, left to right: R. McLeod; A. Murray; E. Winn; F. Nye; B. Huston. Second row: J. Moore; E. Erwin, treasurer; A. Koller, vice-president; R. Ferguson, president; D. Duncan, secretary; H. Boeger. Third row: B. Berry; M. J. Martin; M. Robertson, sponsor; P. Allen; K. Abney.

## FERGUSON W. A. A. PRESIDENT

The Women's Athletic Association was organized in 1928. Its purpose is four-fold. It desires to create and further an interest in all forms of athletics, suitable for women; to encourage sportsmanship and leadership among those participating in athletics; to promote all types of athletics for the many, rather than specialization for the few; and to promote intra-mural tournaments.

This year intra-mural tournaments in the major fall, winter, and spring sports, including soccer, basket-ball, volley-ball, and baseball, were held. Individual activities had their place in archery, tumbling, dancing and tennis. The spring program culminated in the dancing and tumbling work, formed the nucleus for the May Fete, with a modern dance drama, "The Sleeping Beauty".

The association helped to further social and recreational life among women by giving a "kid party" for freshman girls, in the early fall. On March 27 the group sponsored a lecture by Major Phillip Martindale, former United States

ranger at Yellowstone National park. This activity took the place of the annual dance revue. In order to become an active member in the group a girl must earn 75 points. These points are given after performing in or engaging upon certain specific sports. Fifteen points are earned for making the regular team of hockey, soccer, baseball, basketball, and volleyball. By making the championship team, twenty points are added. Entering a tennis tournament gives five points with five more added for each additional round. Hiking five miles is two points; horesback riding twenty hours is twenty points; for attending 75 per cent of the dancing classes ten points are given with five more for appearing in a public program. A two weeks keeping of health rules brings twenty points; twenty for making the tumbling team; from five to ten for archery skill. When 75 points have been earned a letter is awarded. A blanket is given annually to the girl having earned the greatest number of points in one year.



Back row, left to right: Harriet Jones, Kitty Sue Thompson, Edith Jeter, president. Bottom row: Alma Hudson, Berniece Norton, Helen Boeger.

## W. S. G. A.

The Women's Student Government Association was organized September 28, 1931, under the sponsorship of Miss Helen B. May, for the purpose of promoting the spirit of unity among the women of the campus, providing for them a medium of creative expression, and giving them an opportunity of assuming the responsibilities and enjoying the privileges of a self-government organization.

All the women enrolled in school automatically belong to the organization.

This year Mrs. Forrest Western, dean of women, sponsored the group, and with the W. S. G. A. council, formed the nucleus of this strictly woman's club. The council is composed of a president, vice president, secretary and treasurer, and the three house presidents. The latter are elected by the semester, the other officers hold their positions for the year.

Entertainments and instructional meetings which were of a cultural benefit and

interest to women, such as table etiquette, social behavior and graceful dancing, together with social teas in the dormitories and inter-dormitory frolics at Christmas, have featured this year's program. Meetings were usually held in Campbell recreation room in the evening. Attendance was required.

The officers this year have been:

President ..... Edith Jeter  
 Vice president .... Alma Hudson  
 Secretary ..... Martha Doneghy  
 Treasurer ..... Harriet Jones

House presidents first semester were: William and Mary, Berniece Norton; Campbell, Harriet Jones; Birckhead, Helen Boeger. Then the second semester these girls were house presidents: William and Mary, Berniece Norton again; Campbell, Jean Gordon; and Birckhead Maples, Adeline Koller.

The two young women representing the off-campus women were Katherine Sue Thompson and Ruth Ferguson.



Back row, left to right: B. Erwin; B. Blachly, president; Mrs. Maude Digges; I. Almon; B. Huston.  
Front row: H. Dohrman; A. Murray; E. Winn; A. Hudson.

## BLACHLY LEADS Y. W. C. A.

The Young Women's Christian Association is one of the most valuable and worthy organizations on Missouri Valley campus. Its membership is open to all women of the college, both campus and non-campus, and it desires to help its members to realize full and creative life through a growing knowledge of God.

Meetings were held each Thursday morning in the recreation room of Campbell dormitory, and on Sunday afternoons this association, with the Young Men's Christian Association, sponsored Vesper services, with student leaders, in the lobby of Young hall.

Last spring the organization sent a representative, Elizabeth Winn, to the Southwest regional conference at Hollister, Missouri, and in the fall Mrs. Maude Digges, Marjorie Malcolm, and Alma Hudson represented the association at the State conference at Fulton.

An unusual and successful college party was sponsored by the Y. clubs on September 14 in the Morrison gymnasium. On October 4, the Y. W. C. A. members were hostesses to all the new women in the school at an autumn tea from 4:00 until 5:30 in the lobby of Young hall. Just before the Christmas

holidays, on December 18, a Christmas program and party was given in Young hall, followed by carolling out in town. Throughout the year the Y. W. C. A. and the Y. M. C. A. have worked together in bringing guest speakers to the campus, and in planning special programs and parties. During the winter the Y. W. cabinet members were hostesses to the Y. M. cabinet members at a waffle supper in the home of Rev. and Mrs. Frederick Kirker.

The Y. W. C. A. was successful in bringing to the campus Miss Mary Betty Felts, Odessa, Missouri, November 17-18, who spoke in Stewart chapel and later presented a piano concert.

Some of the other speakers featured on the Y. programs this year were Dr. Wilhelm Pauck, Miss Stella Hicks, Mrs. Charles Durrett, Mr. Walter F. Vance, Rev. C. B. Galatas, and Rev. Harvey Baker Smith. Mrs. George Herbert Mack was hostess at tea to members of the Y. W. C. A. cabinet, February 12, at her home.

Miss Beth Blachly was president of the organization for this year, and sponsors were Mrs. Forrest Western, Mrs. Maude Digges, and Mrs. Frederick Kirker.



Back row, left to right: James Woodsmall; Robert van der Maaten; Arthur Bily; Philip Goodwin; Lewis McAdow; Faber Wickham. Front row: Laten Carter; Overly Myers, president; Dr. W. W. Malcolm; Arthur Long; Willard Ethridge.

## MYERS LEADS Y. M. C. A.

The Young Men's Christian Association has endeavored this past year to carry out its purpose as stated in the constitution—"to unite those members of the student body and faculty who desire a Christian Fellowship for personal growth and development and the enrichment of life." In order to insure the members of the organization and all persons who attended meetings, which were held each Thursday morning, that the purpose of the 'Y' was not being neglected, vitally important steps were taken to insure the success of each program.

During the year social events were sponsored by the 'Y' such as the Freshman 'Y' party, a steak fry in the fall and another in the spring, the Christmas party in Young hall, and other events sponsored by the combined Y. M. and Y. W. organizations. Frequently the two Christian groups would have combined meetings when an outside speaker was available and consequently attendance at such gatherings was increased.

The Y. M. C. A. was fortunate in having an exceptionally strong cabinet this year making the work easier on individuals within the group. The cabinet met

when problems arose and the able-bodied group proved its worth many times in making decisions.

The success of the Sunday evening Vesper services held in Young hall during the past two years led to a continuation of these highly laudable worship meetings. The training in worship leadership and the fellowship shown by those who took advantage of the meetings were reason enough for their continuation. The cooperation of the Christian Associations and of those who furnished the musical settings were the principal factors in their success. Officers of the organization this year: Overly Myers, president; Willard Ethridge, vice-president; Arthur Long, secretary; Laten Carter, treasurer. The group was fortunate in securing the continued aid of Dr. W. W. Malcolm as adviser and sponsor.

Many of the Y. M. C. A. members belong to the Chi Alpha fraternity, a religious fraternity, who, under the direction of Dr. Malcolm, conduct religious services all over the state of Missouri. The Chi Alpha quartet this year was: Laten Carter, Faber Wickham, Arthur Long, and Arthur Bily.



## COLLEGE CHORUS

The college chorus traveled extensively this year over the state giving programs under the leadership of Louis Hansen or Professor Fichthorn, and accompanied by Lois Collins. Members were: Betty Erwin, Betty Huston, Adeline Koller, Louise McClung, Berniece Norton, Maxine Reid, Lucille Schroeder, Melba Sparks, Nell W. Wilkening, Virginia Wilson, Elizabeth Bowlin, Helen J. Burruss, Marian Hull, Harriet Jones, Jane Miller, Margaret Tobin, Lilyan Thurman, Martha Traughber, Mary M. Westbrook, Anne Murray, Laten Carter, Otho Pence, Charles Simpson, George Brown, Louis

Hansen, Arthur Long, James Long, Sidney Sullivan, Faber Wickham, Morgan Hillhouse, A. B. Jackson, Lois Collins, Ernestine Haggard.

A double sextette was selected from this group. The schedule for the singers was: Sweet Springs, Odessa, Butler, Clinton, Harrisonville, Pleasant Hill, Chillicothe, Brookfield, Hamilton, Carrollton, Excelsior Springs, Lexington, Urich, Windsor, Deepwater, Osceola, Glasgow, Keytesville, Salisbury, Huntsville, Slater, Jefferson City, and Kansas City. While in Kansas City the Valley singers broadcast over WDAF.



Freshmen Girls' Quartette: Left to right: Melba Sparks, Marian Hull, Maxine Reid and Helen Jane Burruss.



Back row, left to right: Hillhouse, Baker, Bily, Simpson, Hansen, Long, Jones, Harvey, McCorkle, Long, Sullivan, Sevedge, Holic, Turnage. Second row: Hull, Gordon, Murray, Traughber, West, Weston, Crowder, Jones, Westbrook, Sparks, Jeter, Myers, Jackson, Wickham. Third row: Haggard, Bowlin, Tobin, Burruss, Reid, Erwin, Koller, Professor C. L. Fichthorn, Houston, Wilkening, Nye, Schroeder, Wilson, Searfoss, Norton. Fourth row: Collins, Miller, Berry, Robinson, Duncan, Huston, Scrivener, Abney, Allen, Roberts, Helm, Dinga.

## CHOIR GIVES CONTATAS

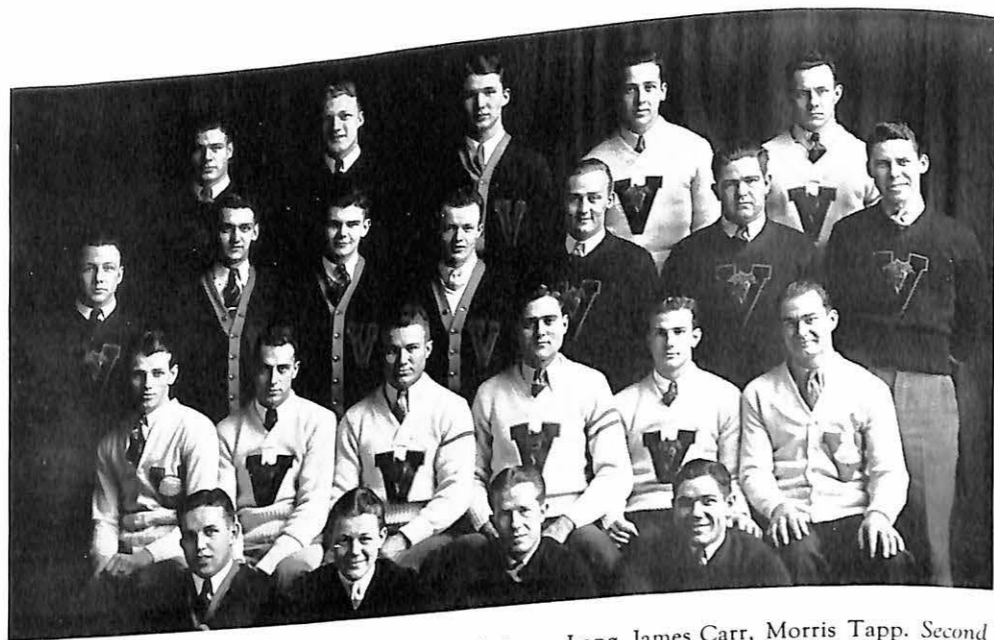
The Vesper Choir under the direction of Dean Claude L. Fichthorn contributed much to the cultural and religious atmosphere of the college and the community of Marshall this year. Besides the regular monthly concerts of both secular and religious music, Dean Fichthorn's contatas were featured. "In Judea's Hills" was presented in the fall. Another original contata, "The Everlasting Life", was given during commencement week.

Many of the more pretentious concerts were given with the assistance of Marshall church soloists. The Morning Choral group frequently gave additional numbers with the choir.

Interesting ensemble playing com-

prised the work of the orchestra this year. One chapel program was given by the orchestra. This work was directed by Louis Hansen and Mr. H. B. Hert, the first semester, and by Mr. Hansen the second semester. Those who have engaged in this work are: Lois Collins, Willard Ethridge, Ruth Eisenstein, James Long, George Brown, and Ingrid Almon.

With the cooperation of members of the Marshall town band a fine group provided music for all the home football and basketball games. The band was under the direction of Louis Hansen. The campus membership included: Ingrid Almon, Lois Collins, Arthur Long, Billy Autenrieth, Homer Cook, George Brown and Brownlee Hill.



Back row, left to right: Bob Place, J. T. Stilwell, James Long, James Carr, Morris Tapp. Second row: Gilbert Holloway, Haydon Digges, David Dexter, Homer Leech, Robert Wilson, George Yates, Frank Robertson. Third row: Dell Harlan, Lloyd Scott, Harold Brown, president; Spencer Glenn, Paul Libby, Cranlee Jenkins. First row: Sidney Sullivan, Merritt Purpus, Gene Sebastian, Howard Bearce.

## MEMBERS IN V-CLUB

The V-club is an organization formed of lettermen from the three major sports of Missouri Valley, consisting of football, basketball, and track. The sponsor is that man whom all young men and young women of Missouri Valley admire and respect for his ability and his kindness, Coach Henri Godfriaux.

The club was founded in 1922, and decided as its purpose, the maintaining of the high athletic ideals and principles of the college and the Missouri College Athletic Union.

With a membership now of twenty-three, the size was increased by the return of baseball to the Valley campus as a major sport, and as a result, will contain several four sport lettermen.

New members to the V-club this year were Dell Harlan, who lettered in track; Howard Bearce, J. T. Stilwell, Merritt Purpus, Robert Wilson and Morris Tapp,

football lettermen; and Kile Guthrey and Nathan Roitman, who earned letters in basketball.

The club presented a chapel program one Friday morning that showed the versatility of the members. In this program "dainty" dancing and "melodious" singing were the featured attractions, together with examples of physical strength. In the field of athletics the boys were hosts to a number of high schools in both a basketball tournament and a qualifying track meet for Missouri state high schools during the year.

The officers for this year were:

President.....Harold Brown  
 Vice-president.....Frank Robertson  
 Secretary-treasurer.....Paul Libby

Officers for 1935-36 as elected this spring are: Frank Robertson, president, Gene Sebastian, vice-president, and Paul Libby again secretary-treasurer.



Left to right, cast of Ibsen's "A Doll's House": Mary Yeager; A. B. Jackson; Martha Doneghy; Bee Berry; Charles Simpson; William Ferguson; Jean Guthrie.

## D. A. C. PRESENTS DRAMAS

The Dramatic Arts Club functions to give those of the student body, who so desire, a chance to express themselves in dramatic work and its related functions of makeup, stage setting, and costuming. It presents to the student body a number of dramatic productions each year. All members of the student body are eligible to apply for membership in the club workshop, and membership is granted upon actual dramatic participation in one major role or two minor roles, and also to those rendering material assistance in the other functions of play-producing.

This year the club presented two major productions. Henrik Ibsen's play "A Doll's House" was successfully presented November 15 in the Little Theatre, under the direction of Miss Ruth Stout. The

cast included those pictured above, and some children.

"The Importance of Being Earnest", Oscar Wilde, was the play produced April 5, in the Little Theatre, again under the direction of Miss Stout. The cast of eight included: Charles Simpson as John Worthing; Kenneth Freeman as Algernon Moncrieff; J. Roger Buck as the Reverend Chausable; Martha Doneghy as Lady Bracknell; Elizabeth Winn, Gwendolyn Fairfax; Ruth Eisenstein, Cecily Cardew; Jean Guthrie, Miss Prism; Lee Cardy, Merriam; and Willard Ethridge, Lane.

Mr. J. Roger Buck was president of the club this year. Other officers for the year were: Elizabeth Winn, program chairman; Jean Guthrie, secretary; and A. B. Jackson, Jr., business manager.



Left to right: Collins, Dawkins, Willis, Stout.



Top row, left to right: A. Murray; R. Matthews; M. Tobin; M. J. Martin, Pres. '36; E. Huston; F. Hinds. Second row: R. Ferguson; K. Abney; M. Traugher; E. Smith; G. Gunn; H. J. Burruss. Third row: A. Hudson; N. Boatright, V. Pres. '36; C. Vandiver; E. Bowlin, Pres. '35; Bee Berry. Fourth row: V. Hartzell; A. Koller, V. Pres. '35; M. Hull; E. Leinbach; I. Smith.

## SIGMA PHI SORORITY

On September 5, 1930, a group desiring to further the high standards of social life on M. V. C. campus, organized the Sigma Phi sorority, with Mrs. C. L. Miller as sponsor, and Miss Fern Nave as president.

Since that time the sorority has established itself as an organization on the campus, realizing its purpose and ideals of developing scholarship, loyalty, attractiveness, and graciousness. Membership is limited to twenty-five. Since 1931

Miss Madeline Ashton has been the sponsor.

The sorority began its activities this year with a theatre party. The rush season was opened with a tea. A steak fry, Hallowe'en party, bridge party, and a formal dinner at the Ruff hotel were among the activities of rush season. On Nov. 24 an informal dance was given in Young hall. An assembly program was presented March 1; and a picnic late in the spring was held. The spring formal was May 11.



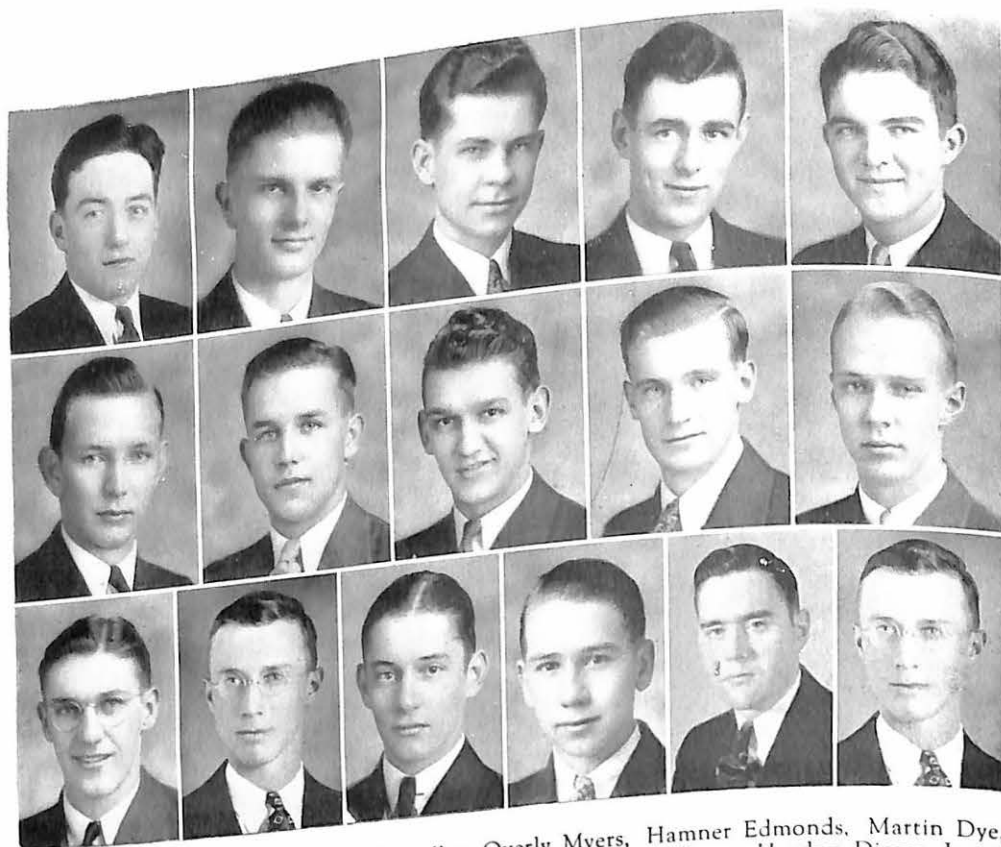
Left to right: Top row: Katherine Sue Thompson, Elizabeth Winn, Harriet Jones, Helen Boeger, Josephine Moore, Mary Frances Roberts. Second row: Jean Guthrie, Mary Yeager, Ruth Stout, Dorothy Robinson, Jean Gordon, Edith Jeter. Third row: Marian Kirkpatrick, Marianna Smith, Charlotte Howe, Elizabeth Erwin, Mary Vance, Jane Miller. Fourth row: Marjorie Malcolm, Rachel McLeod, Ruth Eisenstein, Mary Margaret Westbrook, Katherine Browder, Mary Weston, Maxine Reid.

## VALKYRS SEE FINE YEAR

To give organized support to the Vikings in their victories and defeats, twenty Valley girls banded together in 1922 to form a pep club. First known as the "Zoorites", the girls, in 1924, since they were supporting the Vikings, changed their name to the "Valkyrs," which means "Companion to the Viking."

In the summer of 1930 the club upon the advice of the faculty and the wishes of the members themselves became a social organization, with their basic ideas continued support of the Vikings, and the fostering of scholarship, loyalty, and friendship so that all members might be a symphony of helpfulness and high purpose.

For the past year and the next the Valkyr officers include: President, Katherine Sue Thompson '34, Mary Margaret Westbrook '35; vice-president, Elizabeth Winn '34, Katherine Browder '35; secretary, Harriet Jones '34, Ruth Hains '35; treasurer, Helen Boeger '34, Mary Vance '35. Rushing activities included a progressive dinner, morning coffee, waffle supper, chili supper, dinner at Arrow Rock Tavern. "When Women Rule", a skit, was staged in the winter. A formal dance is May 18. The pledges are: Maxine Reid and Clay Belle Huston. The sponsor is Miss Opal Moore.



Top row: Clarence Arndt, grand chancellor, Overly Myers, Hamner Edmonds, Martin Dye, Paul Barnhill. Second row: Robert van der Maaten, Sidney Sullivan, Haydon Digges, James Woodsmall, Hudnall Harvey. Third row: Lewis McAdow, J. Roger Buck, Laten Carter, Cecil Francis, Spencer Glenn.

## ALPHA DELTA KAPPA

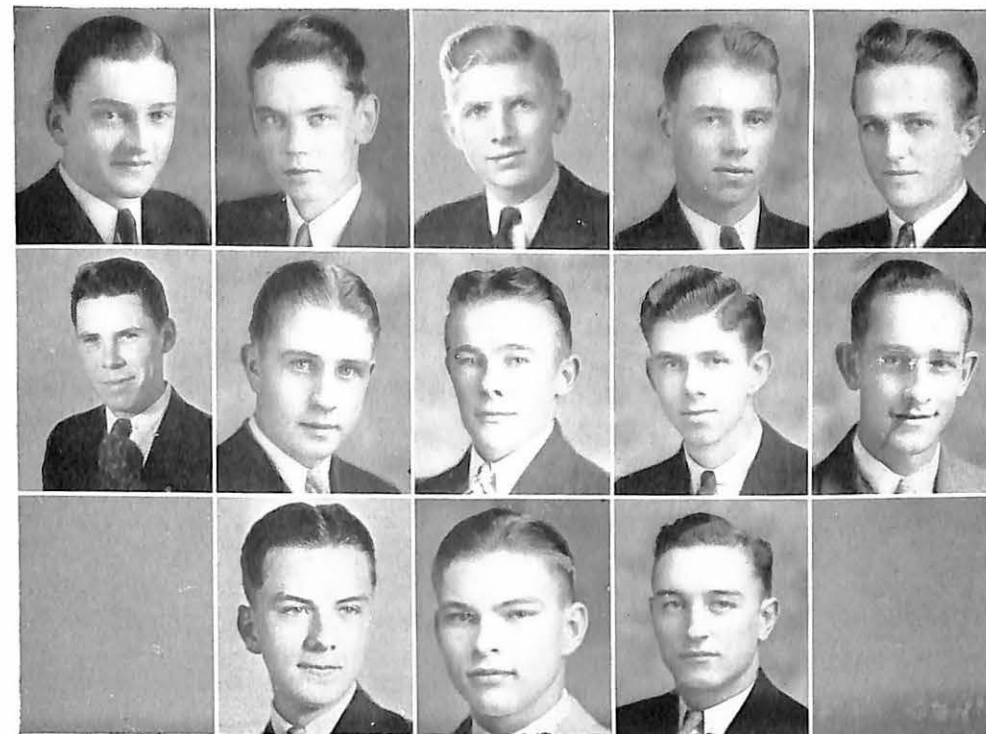
The Alpha Delta Kappa Fraternity, formerly the Tri C Club, was established at Valley in 1927, and since then has had a great deal of activity. This fraternity is organized with its main purpose to promote better social life for all the students of the college, and this combined with promotion of scholarship and fellowship has gained a high standing for the group at Missouri Valley. Its members are prominent in all the campus activities, among which are forensics, dramatics, student government, Y. M. C. A., music, and athletics.

Professor Harry Jordon formerly served as sponsor of this fraternity and upon his leaving the Valley faculty staff to continue his studies at Northwestern university, Dr. Percy Johnson became sponsor. Dr. Johnson, a member of the national fra-

ternity, Beta Theta Pi, has taken a great interest in Delta Kappa, and proved invaluable as a member.

The Delta Kappa fraternity has been ably led by its officers, who are: Grand Chancellor, Clarence Arndt '34, '35; Chancellor of the Seal, Roger Buck '34, '35; Chancellor of the Council, Overly Myers '34; Haydon Digges '35; Worthy Chaplain, Lewis McAdow '34 and '35; Honored Guard, Spencer Glenn '34; Alter Chaplain, Laten Carter '34, Hudnall Harvey '35; Pledge Master, Haydon Digges '34, James Woodsmall '35; Assistant Pledge Master, Everette Markland '35.

Members not included in the picture are: Louis Hansen, Everette Markland, and John Newhouse. Delta Kappa pledges are: Howard Becker, Virgil McDowell, and Melvin Carnahan.



Left to right: Top row: Morgan Hillhouse, William Galloway, Charles Simpson, Phillip Goodwin, Willard Ethridge. Second row: Frank Robertson, William Ferguson, Jay Brown, Pat Patterson, Alfred Jenkins. Third row: Lee Cardy, Thomas Roberts, Kenneth Freeman.

## BIG YEAR FOR SIGMA NU

As early as 1891 the Beta Gamma chapter of the national social fraternity, Sigma Nu, was present at Missouri Valley. After several years the presence of national fraternities at Valley was barred by the faculty and administration, so for the following thirty-five years the chapter was inactive. During this time the Tharsus Club was organized, and in 1931, upon revoking the rule barring national fraternities, the Beta Gamma chapter of Sigma Nu was renewed and the Tharsus Club dissolved to become the Beta Gamma chapter.

The year's social program of Sigma Nu included an informal dance in December, an annual steak fry at the "Hub", and a formal dance in May. This summer the Sigma Nu's plan to continue their custom of holding an outing at Bennett Springs, Missouri, in July.

Professor William I. Ferguson, sponsor

of the Tharsus Club became sponsor of the Sigma Nu chapter at its revival and still serves in that capacity.

The officers of the past and coming year are: Eminent Commander, Morgan Hillhouse '34, Frank Robertson '35; Lieutenant Commander, Charles Simpson '34, Willard Ethridge '35; Treasurer, Willard Ethridge '34, Elmer Schutte '35; Chaplain, Kenneth Freeman '34, William Ferguson '35; Recorder, William Galloway '34, W. E. Stanwood '35; Reporter, William Galloway '34, William Autenreith '35; Marshal, William Ferguson '34, Jay Brown '35; Sentinel, Frank Robertson '34, Jay Brown '35. Sigma Nu pledges include: Bob Haas, Philip Goodwin, Lee Cardy, Pat Patterson, James Baker, Paul Stephens, Charles Baker, Tommy Roberts, Gilbert Holloway, Morris Tapp, Paul Libby, Nathan Roitman, Gene Sebastian, Robert Place.

## MCADOW CHI ALPHA CHAPLAIN

In the fall of 1929 nine ministerial students at Missouri Valley college formed themselves into a ministerial fraternity and gave the new organization the name "Chi Alpha" with the motto "Christ First".

The aims of Chi Alpha are varied. The primary ones are: 1. To inspire and encourage a greater religious feeling on the campus; 2. To offer to ministerial students and others actively concerned in Christian work an opportunity for joint communion with the Master; 3. To permit open discussion of issues directly connected with Christian service; 4. To create a deeper feeling of brotherhood among members of the organization; 5. To promote church attendance among fellow students and to encourage them to attend some church regularly and to help in whatever way possible in Sabbath worship.

Redin V. Shinkle was elected chaplain of that little group. F. Gordon Robertson, steward; Elmer Braden, scribe; and Earl L. Fritz, William A. Harriman, Harry O. Trygg, W. Davidson McDowell, Willard A. Page, and Frank L. Rearick as charter members.

For the past five years, members of that original group, and succeeding members have done yeoman work toward building up not only themselves and their fellows, but their school and those who come in contact with it.

On March 17, 1931, the Beta chapter was installed at Central college. In 1933 a committee from the mother chapter went to Lawrence, Kansas, where there was installed the Gamma chapter. The latter part of April 1935 the Valley officers installed a chapter, Delta, at Westminster, Fulton, Mo.

Certain duties must be fulfilled before a candidate for entrance into the organi-

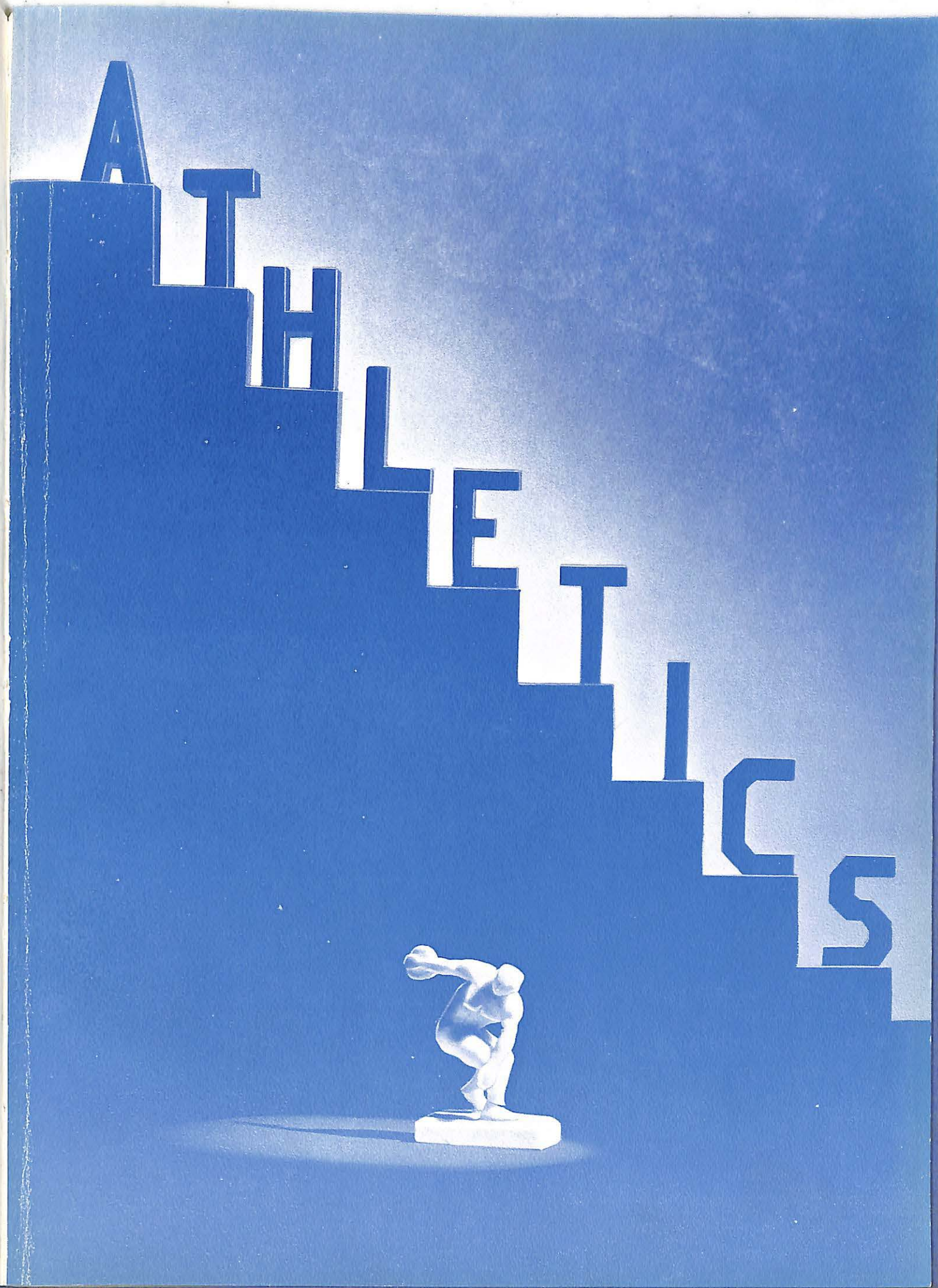
zation is considered. He must know the Greek alphabet; have an accurate knowledge of the Chi Alpha Bible passage (Ephesians 6:10-20) and of the song; must be able to explain the symbolic meanings of various parts of the crest and must know the meaning of the motto, et cetera.

Members of the Chi Alpha organization since its founding here are: Earl L. Fritz, William A. Harriman, F. Gordon Robertson, Redin V. Shinkle, Elmer Braden, Harry O. Trygg, J. Chapman Bradley, Willard A. Page, Davidson McDowell, Arthur Olive, Frank Rearick, Harry Hanley, Charles Ward, Glenn Scholle, Bert Harriman, jr., John R. Gosney, Henry Barnett, Charles J. Mitchell, Daniel Morong, Floyd Williams, G. Raymond Campbell, Martin Roy Murray, jr., Pyron McMillen, Charles Cain, Walter Myers, Luther Chissman, Merle McConnell, Robert Hough, Robert McCluney, Lewis McAdow, Laten Carter, Arthur Bily, and Faber Wickham. The three present pledges are: John Holic, Arthur Long and George Brown.

Lewis McAdow, sophomore from Lexington, is the present chaplain; Laten Carter, Hollister, sophomore, deacon; Arthur Bily, Chicago, sophomore, steward, and Faber Wickham, East St. Louis, freshman, scribe.

The Gospel Team made up of the members of Chi Alpha have been in charge of morning services at Appleton City, Slater and Climax Springs and the evening services at Odell Avenue Presbyterian church at Marshall. The group quartet, composed of Wickham, Bily, Long and Carter is accompanied by Miss Betty Erwin and, or, Jack Newhouse.

It is chiefly through the work of the sponsor, Dr. W. W. Malcolm, that Chi Alpha has been able to progress so successfully.



# ATHLETIC SCHEDULE 1934-35

## FOOTBALL

Date	Opponents	Place	Opp. Score	MVC Score
Sept. 28	Central	here	2	0
Oct. 5	Kemper	there	13	6
Oct. 5	Wentworth	here	7	0
Oct. 12	Rockhurst	there	0	0
Oct. 19	Warrensburg	there	13	0
Oct. 26	William Jewell	there	7	6
Nov. 2	Culver-Stockton	here	13	7
Nov. 9	Tarkio	here	7	13
Nov. 16	Baker	here	13	13
Nov. 29	Central	there	18	6
Total			93	51

## BASKETBALL

Dec. 20	Kemper	there	11	21
Jan. 9	Central	there	25	33
Jan. 12	Tarkio	here	20	17
Jan. 17	Westminster	here	32	21
Jan. 25	K. C. Eagles	here	48	14
Jan. 29	Rolla	here	32	26
Feb. 1	Culver-Stockton	here	29	26
Feb. 5	Drury	here	35	17
Feb. 7	Jewell	there	28	24
Feb. 8	Tarkio	there	26	23
Feb. 14	Jewell	here	22	19
Feb. 19	Central	here	35	34
Feb. 26	Drury	there	31	24
Feb. 27	Rolla	there	39	27
Feb. 28	Westminster	there	41	28
Total			454	354

## TRACK

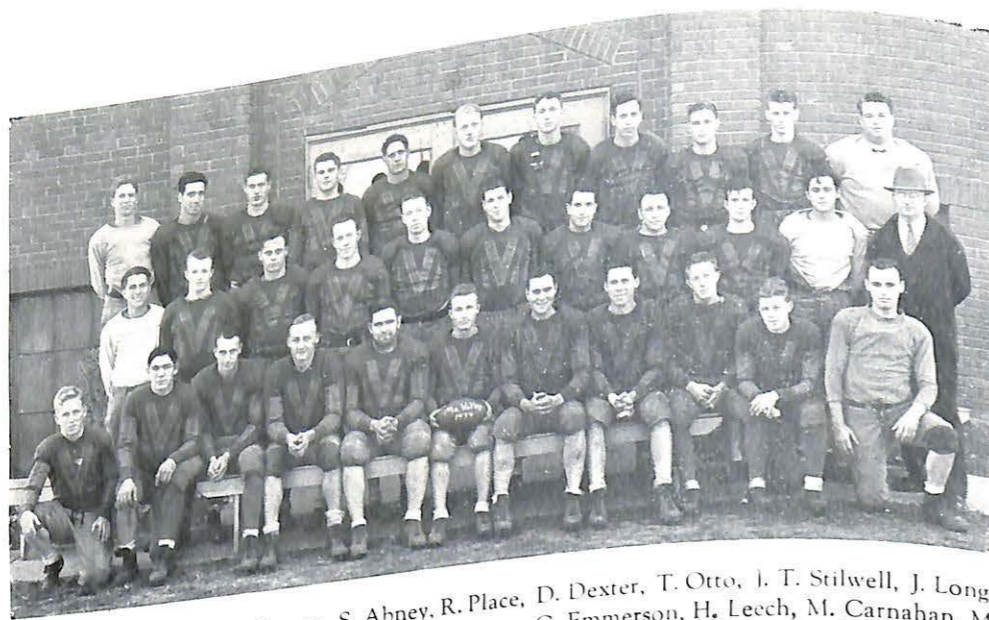
April 12	Westminster	here Etc.	74	69
----------	-------------	--------------	----	----

## BASEBALL

St. Paul	there	14	13
Drury	there	14	11
	Etc.		

## TENNIS

## WOMEN'S ATHLETICS



Back row, left to right: G. Brown, S. Abney, R. Place, D. Dexter, T. Otto, I. T. Stilwell, J. Long, J. Carr, T. Roberts, D. Harlan, C. Smith. Center row: G. Emmerson, H. Leech, M. Carnahan, M. Tapp, W. Preston, E. Brooks, V. McDowell, C. Holloway, P. Libby, A. Bily, Coach Henri Godfriaux. First row: R. Haas, H. Bearce, L. Scott, R. Wilson, G. Yates, Capt. H. Brown, S. Glenn, F. Robertson, G. Sebastian, M. Purpus, N. Roitman.

## BROWN CAPTAINS GRIDSTERS

In striking contrast to the year before, the 1934 football season saw the Missouri Valley Vikings complete a disastrous schedule of ten games in which they were victorious in but one and finished in a tie for the cellar position of the Missouri college union.

Entering the campaign with high hopes of bringing Missouri Valley its third consecutive football championship the Vikings received their first setbacks at the hands of non-conference opponents. In five preliminary games with

Central, Kemper, Wentworth, Rockhurst, and Warrensburg, the V-men recorded one tie and four losses. One of the high points of the season was Valley's doubleheader with Kemper and Wentworth in which the team divided, each half playing one team. Valley lost both games.

Valley was as unsuccessful in conference play as they were in non-conference play. After close and rather heart-breaking losses to William Jewell and Culver, Stockton the Vikings came through with their only victory of the year over Tarkio college. But then following an exciting 13 to 13 tie with Baker University Wildcats the Norsemen received a muddy Thanksgiving defeat from Central, the

### PEP CLUB

Back, left: Guthrie, Myers, Sparks, Markland, Winn, Cardy, Robinson, Sebastian. Right: Moore, Brown, Jones, Sullivan, Gunn, Dye, Hillhouse.



Eagles winning the championship by virtue of their victory.

The Vikings had every reason for beginning the season with a feeling of optimism. Returning to Coach Godfriaux from the preceding year were many members of the championship team. Such lettermen as Captain Harold Brown, George Yates, Lloyd Scott, Spencer Glenn, and Frank Robertson had returned from the upper classmen, while a wealth of sophomore material was on hand in the lettermen: Homer Leech, James Carr, Paul Libby, Gene Sebastian, Jimmy Long, Shelton Abney, Gilbert Holloway, and Robert Place.

Three Valley players were honored with all-conference selections. Jimmy Long, Valley's star sophomore tackle, was awarded a place on the first team for the second year, while Frank Robertson and Lloyd Scott were chosen for guard and end positions respectively on the second team.

Gilbert Holloway, star fullback of the Missouri Valley grid team, was honored with captaincy of the 1935 Vikings.

### MISSOURI VALLEY 0—CENTRAL 2

In this opener, September 28, the Vikings met the Central Eagles on Gregg-Mitchell field in a game played under new rules, in which thirty plays were allotted for each quarter instead of the usual time limit. The Eagles sounded a warning to the Vikings when they pushed them all over the field only to win by a safety late in the game.

### MISSOURI VALLEY 6—KEMPER 13

Half of the squad traveled to Boonville, the afternoon of October 5, to engage the Kemper cadets. It was an even and exciting game with the Norsemen scoring first on a thirty yard run by Howard Bearce in the third quarter. However, the Yellow Jackets combined the running and passing of MacWilliams and Walbert to quickly score two touchdowns and win, 13 to 6.

### MISSOURI VALLEY 0—WENTWORTH 7

The other half of the doubleheader took place in Marshall the same night, October 5, and this time the Wentworth gridsters were winners over the Vikings, by the same seven point margin. The Vikings, led by Red Leech, literally ran over the cadets but lacked the necessary scoring punch.

### MISSOURI VALLEY 0—ROCKHURST 0

This game, played at Kansas City the night of October 12, was one of the most exciting of the year. Obviously outplayed, the Vikings showed a remarkably strong defense in holding back the Hawks who had plastered a humiliating defeat on them the year before. It was Lloyd Scott's defensive work at end that sparkled in this game.

### MISSOURI VALLEY 0—WARRENSBURG 13

The Valley gridsters dropped another thriller, the night of October 19, on the

Lettermen, starting at top: Shelton Abney, Gilbert Holloway, James Carr, Gene Sebastian, Robert Wilson, George Yates, Paul Libby, Frank Robertson, Spencer Glenn.



Yates, Earl Brooks, James Long, Lloyd Scott, Morris Tapp, Robert Place, Harold Brown, Homer Leech, Merritt Purpus, Howard Bearce.



slow Warrensburg field. Led by Dow and Brown, Warrensburg backfield stars, the Mules employed the use of effective passing to score on the Norsemen.

**MISSOURI VALLEY 6—WILLIAM JEWELL 7**

The Vikings opened their defense of the championship in Liberty, the afternoon of October 26. This game was the most disappointing of the season with luck completely deserting the Valley men. The Vikings drew first blood when Leech carried the ball over from the one-yard line after he and Holloway had penetrated deep into Jewell territory. But a long pass from House to Thompson in the end zone soon afterward tied it up and when the Cardinals converted, they led by one point. The Vikings were inside the Jewell five-yard line time and again in the second half but were held by a desperate defense.

**MISSOURI VALLEY 7—CULVER-STOCKTON 13**

The Valley title hopes were blasted by Culver-Stockton on Gregg-Mitchell field, the afternoon of November 2, when they were outplayed and outscored by the last place Wildcats. Dickinson led the Stockton attack which used passing as its most effective weapon. The Vikings led 7 to 6 at one point of the game after Howard Bearce had run thirty yards for a touchdown.

**MISSOURI VALLEY 13—TARKIO 7**

The Valley Vikings achieved their first and only victory of the year in their game with the Tarkio grid forces on Gregg-Mitchell field, the afternoon of November 9. With the Norsemen seemingly destined with another 7 to 6 loss, Jimmy Long broke through and blocked a Tarkio punt, chasing it across the Tarkio goal line for a touchdown and the winning points.

**MISSOURI VALLEY 13—BAKER 13**

This game, played on the Valley field on the afternoon of November 16, was a thriller from start to finish. It saw a Baker aerial attack erase a thirteen point Valley lead which had resulted by two beautiful and lengthy runs for touchdowns by Brown and Leech respectively.

**MISSOURI VALLEY 6—CENTRAL 18**

The Valley grid forces met the Central Eagles in Fayette, Thanksgiving day, with the responsibility of deciding the conference race. As it was, the Eagles had little trouble in exposing of the Norsemen and as a result earned the football title. Two short passes into the end zone, with Guyton on the receiving end, and a blocked kick accounted for the Central scores. A twenty-five yard touchdown dash by Leech scored for Valley.



Back row, left to right: Dell Harlan, Haydon Digges, Jimmy Long, Frank Robertson, Coach Henri Godfriaux. Front row: Homer Leech, Sidney Sullivan, Nathan Roitman, Howard Bearce

## BASKETBALL MEN PLAY WELL

At the start of the 1934-35 M. C. A. U. basketball scramble, the Vikings looked as much the team to beat as did any other in the college union, but subsequent reversals of form and an unwillingness to cooperate on the part of Lady Luck left the "V" team again the undisputed occupants of the cellar position at the end of the season.

The failure of Pete Rea, captain-elect, to return to school was the first thing that hurt the Norsemen. The principal reason for their downfall, however, was simply that they were time and time again out-lucked. The team lost seven games by margins of four points or less, two of them overtime period contests.

The Vikings started the season by handing a trimming to the Kemper court five, 20-11, and continued that auspicious start by a rousing victory over the Central Eagles by a 33-25 score. Following those two games, however, a streak of bad luck which endured until the season's finish dogged the Viking's footsteps.

In the first game on the home floor, Tarkio nosed the Valley quintet out by a 20-17 score to inaugurate the losing

streak. Westminster also took the Vikings' measure by 32-21, while the independent White Eagles, crack Kansas City amateur outfit, smothered the Norsemen under a 48-14 count. Rolla and Culver-Stockton also squeezed out small-margined victories, the former winning 32-26 and the latter 29-26.

Drury came to Marshall and left with the Vikings smarting from a lashing offensive that piled up a 35-17 score. After that, the Valley squad took a two day trip, losing first in two overtime periods to the William Jewell Cardinals by 24-28, and second to the Tarkio team by 23-26 in the second overtime period in as many nights.

Returning home, they met Jewell again on the home court and fell before a last-minute deluge of baskets, 19-22. That brought them up to the last home game which was to be played with Central. Supporters of the Green Eagles were hugely delighted when their team nosed out a victory from what appeared a certain loss, 35-34.

The last road trip found the M. V. C. quintet meeting Drury, Rolla, and Westminster on successive nights and they dropped all three of the games by fairly

good-sized scores. Drury beat them 3-24 in the closest of the three games, while Rolla downed them 39-27 and Westminster, whose Bluejays won the conference championship, put the clincher on by a 41-28 count.

For some reason the Vikings simply didn't get the breaks. Rival teams consistently had those which the Vikings did not have. Horseshoe-festooned basketballs seemed to drop through rival nettings with gusto but none of them went in for the Vikings unless they were put in with unerring eye.

At the close of the season the lettermen selected Nathan "Tubby" Roitman, junior from Kansas City, to lead the 1935-36 squad. Roitman played his first season in a Valley uniform this year, having attended junior college in Kansas City. His play during the season was consistently good and consistently inspired. He should be a valuable asset in the huge task of building a successful basketball team which confronts Coach Henri R. Godfriaux.

Other lettermen for the season were: David Dexter, Jr., Kansas City, sophomore; Sidney Sullivan, Miami, sophomore; James Long, Malta Bend, sophomore; Haydon Digges, Glasgow, sophomore; Homer Leech, Pleasant Hill, sophomore; Frank Robertson, Yates, junior; Dell Harlan, Salisbury, sophomore; Kile Guthrey, Marshall, sophomore; and Howard Bearce, Harrisonville, freshman.

Since all these men return to next year's squad the outlook for a first-class court team appears good. All of the outlook for a first-class court team appears good. All of the men have had

considerable playing experience in high school and have been greatly seasoned by this year's play.

None of the Vikings were picked on any first-all-conference teams, but Roitman was chosen on a second all-conference team.

Despite the fact that their season's record was a very poor one the morale of the squad did not seem to break down because of it. At some times play was ragged and loose, but at no time during the season was there any dissension at all among members of the squad.

Many people have expressed a belief that next year's squad will clean things up generally in the college union hoop-and-netting race, but little is being said about prospects in the Viking camp. Fans point to the fact that at the start of the season Valley's prospects this year were fine and she was picked to put up an obstacle in the path of any championship-bound clan of a rival school.

The squad put up a fight from start to finish and there is little else to be said. They didn't win games, it is true, but they *tried* to win them and that's what counts.

During the long hours of basketball practice and at every game, a loyal Viking, formerly a wearer of the Purple and Gold on the gridiron, was with the team lending his support, giving his services.

The school wishes, in this small way, to show its appreciation to George "Tubby" Smith, Viking of the past and present, who has so loyally supported the team, not only in basketball but in other sports as well.



Back row, left to right: Coach Carson Dowell, P. Libby, D. Harlan, M. Tapp, G. Stanwood, J. Long, K. Guthrey, R. Place, P. Stevens, H. Bearce, J. Brown. Front row: L. Carter, G. Brown, L. McAdow, W. Ethridge, L. Scott, H. Leech, Captain; H. Thomas, A. Huff, C. Arndt, C. Jenkins.

## DOWELL COACHES TRACK

With a small squad composed largely of inexperienced freshmen and sophomores, the outlook for the Vikings in track was not too bright at the start of this season. Only four lettermen and a handful of non-lettermen answered the call.

Later another letterman and new material appeared, but the outlook still was not too bright. With the advent of baseball it became necessary to appoint an assistant coach to take care of track and J. Carson Dowell, a former student here, was selected to fill the post. His first conference meet was with Westminster less than a week following his appointment and he surprised the student body and everyone else who had manifested any interest in it by nearly defeating the champion Jays, dropping the meet by a four point margin.

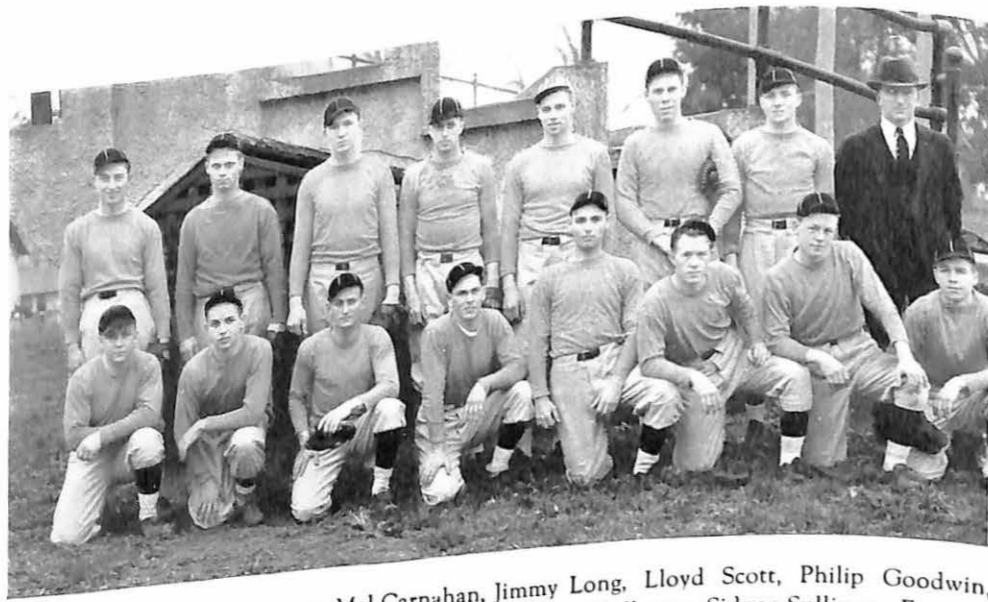
Following the meet another letterman appeared and things began to look up. Naturally, the Vikings were hit hard by the failure of several men to report and by the recently declared ineligibility of James Carr, 1933 Kansas City Interscholastic weight champion and sophomore.

Homer Leech, 1934 M. C. A. U.

hurdle champ and high point man in the first meet of the year, is one of the returning V-men, while James Long, Paul Libby, Dell Harlan, and Cranlee Jenkins complete the group.

One note of hope was sounded early this spring when the Viking mile relay quartet composed of Thomas, Ethridge, Leech and Scott, walked away with the event in the K. C. A. C. indoor meet. As this book goes to press, it is impossible to determine whether or not the Viking relay men can show their heels to the remainder of the college union, but they certainly will be in the running. Their best time to date is 3:40.5.

The squad: Leech, hurdles and field events; Libby, dashes; Long, weights; Jenkins, 220 and 440; Harlan, half mile; Bearce, field events; Thomas, sprints and quarter; Ethridge, quarter and sprints; Brown, middle distances; G. Brown, middle distances; Carter, middle distances; Place, sprints; McAdow, low hurdles; Arndt, quarter; Stanwood, middle distances; Darrell Cummings, middle distances; Stephens, middle distances; and Tapp, weights.



Left to right: Kenneth Freeman, Mel Carnahan, Jimmy Long, Lloyd Scott, Philip Goodwin, Arthur Long, Coach Henri Godfriaux. Front row: Gilbert Holloway, Sidney Sullivan, Everette Markland, Otho Pence, Nathan Roitman, Gene Sebastian, Merritt Purpus, Homer Cook.

## BASEBALL IS RETURNED HERE

For the first time since the spring of 1929 the Vikings' diamond this year resounded to the crack of the bat and the cries of baseball players.

Although most of the candidates for the nine appeared inexperienced, the outlook appeared bright for the Valley team. The squad narrowed itself down to fifteen men after the third game of the season, but those fifteen were playing good baseball.

St. Paul's college captured the season's opener in Marshall, 14-13, but only after a three-run rally in the ninth. Previously the Saints had piled up a 11-2 lead only to see it disappear in a nine-run Valley parade in the seventh.

The Vikings lost their second, too, dropping the first contest of a two-game series with the Drury Panthers at Springfield. The Panthers had it pretty much their own way, winning 14-11, but had a great deal of trouble with the Vikings in the second contest, finally going down in another scoring fest, 13-15.

The remainder of the Norsemen's schedule includes games with the alumni

team, another series with Drury, St. Paul and others.

The squad was handicapped at first by lack of pitching ability; Lloyd Scott, a right-hander, and Otho Pence, a port-sider, being the only two out for that position. However, third-baseman Roitman was made over into a hurler and did a good job of it, while Markland was called in from his centerfield position to take over the mound duties on several occasions.

The squad: Lloyd Scott, pitcher; Sidney Sullivan, right fielder; Phillip Goodwin, right fielder; Frank Robertson, first baseman; Everette Markland, centerfielder and pitcher; Gilbert Holloway, catcher and left fielder; Melvin Carnahan, catcher; Homer Cook, first baseman; Nathan "Tubby" Roitman, pitcher and third baseman; Gene Sebastian, second baseman and shortstop; Merritt Purpus, shortstop and second baseman; Arthur Long, second baseman; James Long, first baseman and catcher; Kenneth Freeman, left fielder; Otho Pence, pitcher.



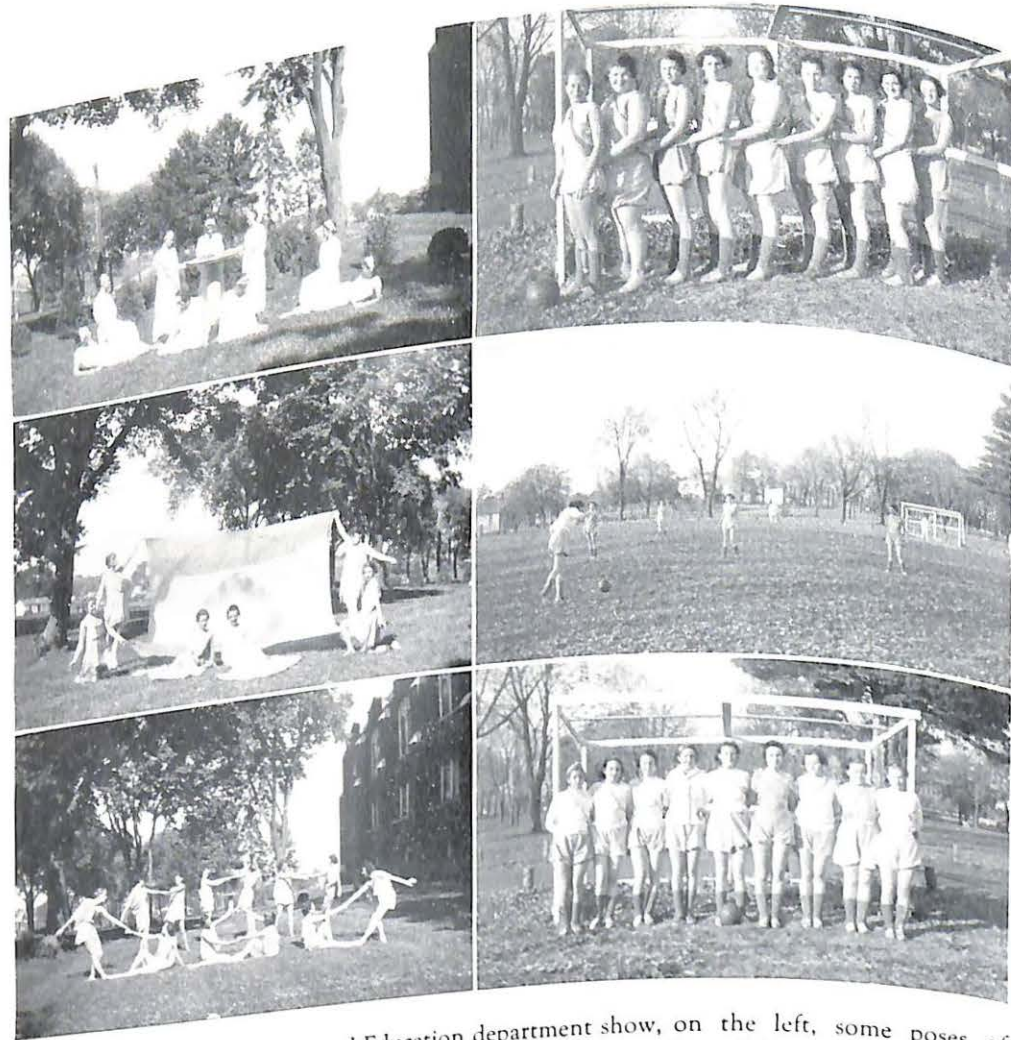
Left to right: Homer Cook, Arthur Long, Haydon Digges, Mel Carnahan, Carl Frank, Dr. Earl Pettijohn, coach.

## TENNIS A MINOR SPORT

The game of tennis was well represented at Valley this year by a large and promising squad of veterans and new members. Returning from last year were the lettermen, Carl Frank and Arthur Long, while new applicants for the squad were on hand in the upper classmen, Frank Robertson, Haydon Digges, and Willard Ethridge, and the freshmen, Homer Cook, Mel Carnahan and Howard Bearce.

From these aspirants Coach Earl Pettijohn was able to mold a strong and promising squad of six members which showed itself to good advantage in fall matches and early spring matches. As this book goes to press the team had met the Westminster net team in a tie match to open conference play and had a number of matches scheduled.

A tournament was held between the tennis players of the college.



These illustrations from the Physical Education department show, on the left, some poses of interpretative dancers. At the top is a frieze pose from "Dream of Love" by Liszt; below that a scarf dance pose; and last an interpretation of Schubert's "March Militaire". On the right, top, is a freshman soccer team; a soccer game in action; and last another freshman soccer team.

## WOMEN'S PHYSICAL ED

Miss Marjorie Robertson, as instructor in physical education for women, has brought to Missouri Valley an increased interest in the development of poise, physical fitness, and bodily grace through the medium of physical education. Besides such sports as soccer, basketball, baseball, volleyball, hockey, tennis and archery, there is training in modern tap and clog dancing and in interpretative dancing.

The department has excellent equipment for archery and the other sports. For those girls who are acrobatically in-

clined a special class in tumbling is taught. This group often give public performances. A short dance recital was given this spring, April 27, when the following girls were presented in interesting character dances: Mary Margaret Westbrook and Dorothy Robinson, doing advanced steps; Kay Browder and Gwen Gunn, in a character number; Mary Yeager and Rachel McLeod, also character; and Miss Robertson herself in a highly artistic interpretative dance.

# CAMPUS LIFE



## VIKING ANTHOLOGY

How dear to my heart  
Are the scenes of the campus  
When fond recollection recalls them to view.  
The bleachers, the fountain, the  
Lib and the Chapel,  
And other loved spots which my  
school days all knew.  
The gateway, the arch with the stone ball above it,  
The deep-shaded nooks near the tennis court too.  
The padlocked main building,  
The rec room and workshop,  
Bring sweet secret memories of love old and new.  
Hail to the soph who in triumph advances,  
Honor and laud to the chief of them all,  
High he has ridden in Spree Day achievements,  
Great will the crash be, and awful the fall!  
Under the weeping willow tree  
The college sweethearts sit  
And what they do, and what they say—  
We'd best not write of it!

Away from the campus, cool and fair,  
Calm in the crisp November air  
To New York went our president.  
(On college business he was sent.)  
One night around the radio  
We gathered, for Cap'n Henry's show.  
The Show Boat program was in full swing  
When someone said, "There's to be a wedding.  
We need a preacher. Go get one quick!"  
"Why Dr. Mack will turn the trick!"  
So Dr. Mack was quickly sought  
And to the microphone he was brought.  
"We use Maxwell a lot in our old shack,  
That's why all our students come back.  
Use other coffees if you must," he said.  
"But I'd rather you'd use Maxwell House instead."

Measles to the right of us  
Measles to the left of us  
Measles in front of us.  
We all gazed and wondered.  
Each morn with eager stare  
We searched measles everywhere  
But pulled through without impair.  
Victorious, we conquered!

Once upon a midnight dreary  
When I was sitting very weary  
Trying to study but really napping,  
Suddenly I heard a rapping, tapping, rapping  
At my chamber door.  
I thought it was my errant roommate,  
Or perhaps, some other school mate,  
So in accents sad I whispered,  
"Go, and rap no more."  
But the rapping still insisted  
Would not stop, but still persisted  
'Til I opened wide the door.  
There I saw a ghostly vis'tor  
Wrapped in cloak and hooded visor  
Standing at my door  
With the grim forboding warning  
"There are examinations coming!"  
So I 'gan to cram and study  
'Til with sweat my brow was bloody.  
Examination came and went  
And I, with study hard am spent.  
But still I see the ghostly vis'tor  
Wrapped in cloak and hooded visor  
Standing at my door,  
Stating in sepulchral voice,  
"You have FAILED, but try once more."  
Spring has sprung, Tra-la Tra-la  
"Do Not Roll On The Grass!"  
Spring has sprung, Tra-la Tra-la  
It really doesn't pass  
The approval of  
The Faculty, Amiristration, Deans, or Board of Education.  
There's vacation waiting just around the corner,  
Fare thee well, M. V. C.  
And we're feeling like a sentimental mourner,  
Fare thee well, M. V. C.  
We've enjoyed being here,  
And we'll all be back, never fear,  
All the undergraduates will come  
Back from far and near,  
Next year.  
Then we'll rally once again around the Vikings,  
Hail to thee, M. V. C.  
Here's a toast to football scores to our liking,  
Always win, M. V. C.  
You're the school that we love best of all  
As we'll prove to you next fall.  
But vacation's waiting just around the corner,  
Fare thee well, M. V. C.

# A COLLEGE STUDENT'S EUTOPIA

New York, June 1, 2180

Archeologists in the middlewest today unearthed an antique manuscript headed "A COLLEGE STUDENT'S EUTOPIA", presumed to have been written in the early part of 1935 by some collegiate intellectual.

The college campus of dear ole Alma Mater is wide and well-landscaped. The campus is lighted at infrequent intervals by soft lamps of deep orange, giving an effect of moonlight. On nights when the moon is in the full, all campus lights are turned off. The main building of the campus is a large building of classic architecture. As one enters one feels immediately a sense of freedom and intellectual curiosity. The classrooms are equipped with overstuffed chairs and indirect lighting. In the large library one finds on the stacks all possible information on every probable subject as well as on many improbable ones. By merely inserting in the correct aperture a slip of paper with the desired book indicated thereon, one can immediately procure ample material on any subject which an earnest professor can manage to invent. Here the goopers gather during their leisure moments and hold long and detailed discussions as to the amount of time spent in gooping, the varied abilities of goopers and the possibilities of cramming as opposed to consistent gooping.

The Gothic chapel lifts imposing spires of soft grey stone against the perfect blue of a spring sky. As one enters one can hear the full tones of one of the world's largest organs rolling forth in a flood of celestial harmony. The white robed choir in the loft raises paeans of praise, leaving the chapel in hushed stillness which is broken by the rich, mellow tones of the college chaplain as he reads from the Bible.

From the chapel our attention is called to the gymnasium, planned after the Greek gymnasia. Balconies around the floor provide ample space for spectators. Behind the main part of the gymnasium is a magnificent swimming pool lined with translucent blue tile which can be illuminated from below, allowing perfect vision of swimming form, and—er—well, form.

The girls' dormitories are planned in suites, each suite having a living room, study and bedroom. To every two suites is a bath, laundry room and kitchenette, fully equipped. With this at their disposal the girls often entertain the young men, such a plan meeting with the full approval of the college administration since it is the purpose of the college to equip their students with the ability to be perfectly at ease in any and all situations. Radios and telephones are included in the equipment. The boys' dorms are similar in exterior design making a pleasing ensemble.

The social life of the campus which centers around the all school dances held twice a month, finds its being in a building erected particularly for this purpose. The first floor is a large dance floor always well-polished. The second story is composed of a promenade and conservatory at the end of which is a supper room. Here every two weeks, the entire college is entertained.

The parlors of the dormitories are arranged around one large central room with smaller rooms opening off from this for individual couples or larger groups, as the privacy of the individual is at all times respected.

N. B. "Gooping". In so far as can be determined, a colloquialism of the day for continued and intense preparation of daily assignments. Consult Roitman, Vol. II.

# DO YOU REMEMBER.....

(Compiled from the *Delta* by Alma R. Hudson)

- Sept. 11-12. Registration days! What a mix-up. New five-day week plan introduced.
- Sept. 12. What a day for the Freshmen.
- Sept. 13. First day of classes—we're off again.
- Sept. 14. Y.M. and Y.W. hosts to the student body with a "date party".
- Sept. 19. Spree Day. Sophomores victors in contests.
- Sept. 25. Tea for non-resident women, given by Dean of Women, Mrs. Western.
- Sept. 26. "Big Sisters" escort "little sisters" to W.A.A. kid party.
- Sept. 29. Students and faculty get first glimpse of Vikings at an exhibition game.
- Oct. 4. Y.W.C.A. hostesses to new women students and faculty dames at a tea.
- Oct. 5. Doubleheader game proves too much.
- Oct. 10. Birkhead gives first dormitory tea of the year.
- Oct. 11. Y.W.C.A. has membership service. Candles, soft music, pledges!
- Oct. 12. Vikings hold Rockhurst Hawks to score 13-13. Class presidents elected; Buck, senior; Dye, Libby and Haas, others.
- Oct. 16. Rush week opens—all eyes to Valkyrs and Sigma Phis.
- Oct. 17. Second set-to of fall tennis season played.
- Oct. 19. Founder's Day: W. T. Baird honored at chapel service.
- Oct. 23. Valkyr sorority has formal dinner for rushees at Arrow Rock tavern.
- Oct. 24. Sigma Phi sorority entertains at a formal dinner for rushees at Hotel Ruff.
- Oct. 26. Oh! You look it up! Another heartbreaking defeat.
- Oct. 31. Faculty-student wiener roast on baseball diamond.
- Nov. 1. Dr. Mack's radio debut with Maxwell house.
- Nov. 4. Sunday vesper choir makes its first bow.
- Nov. 9. M.V.C. Viking gridsters taste first victory of the season in Tarkio game.
- Nov. 14. 6:30 a. m. Death of Dr. Isaac Newton Evrard. Missouri Valley loses a true Viking, and every student a personal friend.
- Nov. 16. Funeral services for Dr. Evrard in Stewart chapel.
- Nov. 22. D.A.C. opens play season with Ibsen's "A Doll's House".
- Nov. 24. Sigma Phi informal in Young hall lobby.
- Nov. 27. Memorial service for Dr. Evrard.
- Nov. 28. Thanksgiving vacation begins.
- Nov. 29. Turkey day game. M.C.A.U. championship title for '34 goes to Central.
- Dec. 3. Thanksgiving vacation ends. Holloway elected football captain '35.
- Dec. 6. Annual football banquet followed by dance and coronation of Harvest queen.
- Dec. 7. Valley has a birthday and celebrates with a party, forty-fifth anniversary.
- Dec. 8. Sigma Nu informal in Young hall lobby.
- Dec. 15. All school dance in Morrison gymnasium.
- Dec. 16. Vesper choir sings Dean Fichthorn's sacred cantata, "In Judea's Hills".
- Dec. 19. A Christmas party; Christmas programs, then carolling.
- Dec. 19-Jan. 3. Christmas vacation and how welcome it was.
- Jan. 5. Valkyr informal in Young hall.
- Jan. 9. Vikings for the first time in history are victorious on Fayette's basket ball court, winning with a 33-25 score.
- Jan. 11. Alpha Delta Kappa scores "grand operah" hit with "I will not consent". Students surprised by resignation of Dean C. L. Miller, beloved teacher and administrator; also resignation of Robert Burlingame.

- Jan. 12. Alpha Delta Kappa informal in Young hall.  
 Jan. 22-25. Final exam week. Black coffee, headaches, So this is college.  
 Jan. 22. Dr. Earl Pettijohn selected to be acting dean. Prof. Robert Burlingame leaves college, after resignation is accepted.  
 Jan. 29. New semester! Goody, now we get to start all over.  
 Feb. 2. Kitty Sue Thompson elected May queen.  
 Feb. 9. Harvey and Newhouse talk themselves through seven debate rounds to win the Junior college debate tournament at annual state joust here.  
 Feb. 15. "When Women Rule", by Valkyr sorority in the Petit Theatre.  
 Feb. 15-16. Valley letter men played host to high school basketball teams.  
 Feb. 26. Dr. Haley's sociologists launch a new program in organization of "Reck" hour for the "gang", well y'know, or if not, ask Sebastian.  
 March 1. Valley's own Radio City—Sigma Phi's present chapel program.  
 March 2. The New Deal for Valley women.  
 March 3. Vesper choir gives concert. Another success.  
 March 8-9. District high school debate tournament here. College boys suddenly become interested in forensics.  
 March 15. Famous Cheatum Brothers visit campus with their circus. V club puts out some pep in an assembly program.  
 March 16. All school "St. Pat's" dance in Morrison gymnasium.  
 March 28. Clarence Arndt elected president of the student body for next year. Here's to you Clarence, we're with you for a bigger and better Valley.  
 March 28-April 2. Spring vacation; measles; and spring fever. Otherwise swell.  
 April 3. Mixed chorus broadcast over W. D. A. F., Kansas City.  
 April 5. D.A.C. presents "The Importance of Being Earnest", another success for Ruth Stout, director.  
 April 9. Homer "Red" Leech chosen captain of 1935 track squad. Let's go Red!  
 April 10. University of K. C. and Valley parley with no decision. Missouri Valley returns to the diamond after six years absence.  
 April 11-13. First Spring Festival. Governor Park addresses student body.  
 April 12. M.C.A.U. track season opened. Lose first meet to Westminster with 69-74 score.  
 April 21. Vesper choir, Stewart chapel, singing Easter music.  
 April 27. Kollege City dance in the gym. Gala affair. Valley gets the "once over".  
 May 2. Junior-Senior banquet. Seniors get a feed at the expense of the Juniors.  
 May 4. Delta Kappa Formal. Whoops!  
 May 7. Senior women entertained at A.A.U.W. tea.  
 May 9. May Fete; "The Sleeping Beauty" takes place of Shakesperean play. Kitty crowned.  
 May 11. Sigma Phi sorority gives spring formal in gym.  
 May 18. Valkyr sorority formal.  
 May 21. Sigma Nu closes formal dance season.  
 May 25. Oratorio, "The Everlasting Light".  
 May 26. Baccalaureate, did you cry too?  
 May 27. Commencement, climax of four years. Seniors receive sheepskins, wondering, How?  
 May 28. Exams, exams, exams!!!  
 June 1. It's all over—And I just can't go on! Luck to you, and goodbye!

## INDEX

### THE BOOK

A College Students' Eutopia	82
Activities	47
Administration	23
Alpha Delta Kappa	64
Athletics	67
Athletic Schedule	69
Baseball	76
Basketball	73
Beta Gamma Phi	49
Calendar	83
Campus Life	79
Chi Alpha	66
Chorus	58
Classes	31
Contents	6
D. A. C.	61
Dedication	3
"Delta" Staff	51
Faculty	25
Features	7
Foreword	2
Football	70
Freshmen	42
Freshman Queen	19
Harvest Queen	18
In Gratitude	4
Juniors	36
Junior Queen	21
May Queen	17
Pep Club	70
Pi Gamma Mu	52
Pi Kappa Delta	53
Poem	16
Quartette	58
Queens	15
"Sabiduria" Staff	50
Seniors	33
Senior Queen	22
Sigma Nu	65
Sigma Phi	62
Sophomores	38
Sophomore Queen	20
Student Senate	30
Tennis	77
Track	75
Unphotographed Students	46
V-Club	60

Valkyr	63
Vesper Choir	59
Viking Anthology	80
W. A. A.	54
Women's Athletics	78
W. S. G. A.	55
Y. M. C. A.	57
Y. W. C. A.	56

### THE STUDENTS

Abney, Kate Howard	62, 38, 54
Abney, Shelton	71, 38
Allen, Pauline	28, 38, 54
Almon, Ingrid	56, 38
Arndt, Clarence	30, 64, 36, 75
Antenrieth, Billy	42
Baker, Charles	38, 65
Baker, James	51, 50, 38, 65
Barnhill, Paul	50, 64, 38
Beare Howard	70, 76, 73, 72, 60, 46, 77, 75
Becker, Howard	42, 64
Berry, Ree	62, 61, 54, 38
Bily, Arthur	57, 66, 38
Blachly, Beth	56, 33
Boatright, Nell	62, 36, 30
Boeger, Helen	33, 22, 63, 54, 55, 50
Bowlin, Elizabeth	62, 36
Breeding, Lila	42
Brooks, Earl	46, 72, 70
Browder, Katheryn	63, 42, 30
Brown, Harold	33, 70, 72, 30
Brown, George	42, 75
Brown, Jay	65, 46
Brown, May Elie	38
Buck, Ellen	42
Buck, J. Roger	46, 64, 53, 62
Buck, Mary	42
Buck, Perry	42
Burruss, Helen Jane	42, 62, 58, 20
Carr, James	46, 75, 70, 71, 60
Cardy, Lee	42, 61, 65, 70
Carnahan, Mel	46, 73, 77, 64
Carter, Laten	66, 38, 58, 57, 75
Chisman, Luther	66
Coffman, Marshall	38
Collins, Lois	38, 58
Cook, Homer	42, 77, 76
Cox, Jack	42
Crowder, Lucille	42
Cummings, Darrell	46, 75
Dexter, David	38, 64, 73, 51, 70, 60

Digges, Haydon	38, 76, 60, 64
Dinga, Marie	46
Dohrman, Hilma	38, 56
Doneghy, Martha	38, 61, 55
Duncan, Dorothy	54, 33
Duncan, Ruth	33, 50, 52
Dye, Martin	70, 38, 64
Eaker, Elizabeth	38
Eaker, William	46
Edmonds, Hamner	33, 64, 52, 30
Eisenstein, Ruth	38, 63
Emerson, George	46
Emerson, Harold	46
Erwin, Elizabeth	38, 63, 56, 54
Ethridge, Willard	38, 65, 53, 75, 57
Ewell, Charles	42
Ferguson, Ruth	36, 54, 62, 52
Ferguson, William	38, 65, 53
Francis, Cecil	64, 42
Frank, Carl	46, 52
Freeman, Kenneth	61, 38, 65, 76
Galloway, William	65, 33, 51
Glazebrook, Genevive	42
Glenn, Spencer	70, 71, 46, 64
Goodwin, Phillip	38, 65, 57, 51
Gordon, Jean	63, 36, 51
Gray, Louella	46
Grimes, June	46
Gunn, Gwen	62, 42, 70
Guthrie, Jean	38, 63, 50, 70
Guthrey, Kile	46, 74
Haas, Robert	46, 65
Haggard, Ernestine	42
Hains, Ruth	46, 63
Hamilton, Helen	51, 38, 50
Hansen, Louis	58, 38, 64
Harlan, Dell	38, 75, 76, 70, 60
Hartzell, Virginia	62, 38
Harvey, Hudnall	53, 42, 64
Hayob, Raymond	46
Helm, Rowene	38
Hill, Brownlee	42
Hillhouse, Morgan	65, 33
Hinds, Frances	42, 62
Holic, John	46, 66
Holloway, Gilbert	46, 70, 71, 73, 76, 60, 65
Howe, Charlotte	63, 36
Houston, Clay Belle	63, 68
Hudson, Alma	62, 33, 50, 49, 56, 83
Huff, Alva	75, 38
Hull, Marian	58, 62, 42, 58

Huston, Betty	62, 56, 38, 54, 58
Irvine, William	38, 65
Jackson, A. B., Jr.	51, 50, 36
Jenkins, Alfred	65, 42
Jenkins, J. C.	46, 60
Jeter, Edith	53, 33, 63
Johnston, Lewis	38, 51
Johnston, Marcia	46
Jones, John Paul	38
Jones, Virginia	42
Jones, Alma	38, 51
Jones, Harriet	36, 70, 63, 55
Kirkpatrick, Marian	36, 18, 63
Koller, Adeline	62, 58, 36, 54
Kregel, Anna May	42
Lakin, Raymond	42
LaRue, George	50, 33
Leech, Homer	46, 70, 75, 76, 74, 60
Leinbach, Ellen	36, 62
Levin, Harry	42
Libby, Paul	46, 75, 65, 60
Long, Arthur	66, 33, 77, 57
Long, James	73, 75, 76, 60, 70, 72
Lucas, Myrtle	42
MacCluney, Robert	46, 66
Malcolm, Marjorie	33, 63, 54, 30
Markland, Everett	46, 70, 64, 73
Marshall, Olivia	42
Martin, May Jane	62, 54, 36, 21
Matthews, Rachael	62, 42
McAdow, Lewis	66, 57, 64, 53, 38, 75
McClung, Louise	38, 58
McClure, Lucille	38, 62
McCorkle, Lee	42
McDowell, Virgil	46, 64
McLeod, Rachel	50, 63, 38, 54
Miller, Jane	20, 38, 63, 58
Moore, Josephine	33, 63, 52, 54
Murray, Ann	56, 38, 62, 54
Myers, Overly	64, 57, 33, 70, 51
Newhouse, John	53, 64, 42
Norton, Berniece	58, 38
Nuckles, George T.	54, 36
Nye, Fern	54, 36
Otto, Truman	42
Page, Dale	65, 42
Patterson, Richard	46, 73
Pence, Otho	46, 65, 75
Place, Robert	12
Preston, William	38, 76, 73, 70
Purpus, Merritt	42
Raines, Irvin	58, 63, 42
Reid, Maxine	63, 33
Roberts, Mary Frances	42, 65
Roberts, Tommy	46, 65, 76, 70, 71, 77, 73
Robertson, Frank	63, 38
Robinson, Dorothy	46, 73, 76, 65
Roitman, Nathan	33
Sappington, Virginia Caton	38, 55
Schutte, Elmer	62, 42
Schroeder, Lucille	46, 70, 73, 75, 76, 60
Schuster, Vera	38
Scott, Lloyd	46
Scrivner, Fyrn	38
Searfoss, Mary Letta	46
Sebastian, Gene	46, 60, 65, 76, 70
Sevedge, Maurice	38, 70, 64
Simpson, Charles	61, 65, 77
Smith, Charles	30, 42
Smith, Mariana	33
Smith, Edna	62, 42
Smith, Irene	33, 62
Sparks, Melba	58, 62, 42
Stanwood, Eugene	42, 75
Stephens, Paul	65, 42, 75
Stillwell, J. T.	70, 71, 38
Stout, Ruth	61, 33, 63
Sullivan, Sidney	64, 38, 73, 76, 60
Shaver, Harriet	46
Tapp, Morris	72, 60, 70, 65
Thomas, Eleanor	42, 78
Thomas, Howard	75, 42
Thompson, Kitty Sue	17, 36, 63, 55
Thurman, Lilyan	58, 38
Thweatt, Virginia	36, 50, 52
Tobin, Margaret	33, 58
Traughber, Martha	38, 62, 58
Turnage, Wallace	46
Vance, Mary	63, 38
Van der Maaten, Robert	64, 38, 57
Vandiver, Charlotte	42, 62
Vogelsmeier, Arthur	42
Warren, Kenneth	42
Wenzel, Nellie	42
West, Mary Anna	42
Westbrook, Mary Margaret	36, 63
Weston, Mary Elizabeth	42, 63
Whitford, Merle	42
Wickham, Faber	42, 66, 57
Wilkening, Nello W.	62, 42
Winn, Elizabeth	33, 63, 51, 50, 54, 56, 52, 53, 70
Willis, Mary Elizabeth	42
Wilson, Francis	42
Wilson, R. P. C.	64, 38, 70
Wilson, Virginia	42
Wood, Isabel	46
Woodsmall, James	36, 57, 64
Yates, George	70, 71, 33, 60
Yeager, Mary	63, 36
Yowell, Rosemary	33

## PERFECT DAY

"When you come to the end of a perfect day,  
And you sit alone with your thots,  
While the chimes ring out with a carol gay,  
For the joy that the day has brought;  
Do you think what the end of a perfect day  
Can mean to a tired heart;  
When the sun goes down with a flaming ray  
And the dear friends have to part.

Well, this is the end of a perfect day,  
Near the end of a journey too.  
But it leaves a thot that is big and strong,  
With a wish that is kind and true;  
For memory has painted this perfect day  
With colors that never fade;  
And we find, at the end of a perfect day,  
The soul of a friend we've made."

We Present  
Our Advertisers



## Missouri Valley College

By its

President, Faculty, and Trustees

expresses gratification with the evidences of loyalty and co-operation displayed by students in all activities and campus life.

It is by such devotion to worthy aims that we build an institution of fine traditions and noble achievements.

## ALPHA CAFE

*Good Things to Eat and Drink*



BACON & TONY

*South Side Square*

*Telephone 214*

---

MILK IN ABUNDANCE  
PROMOTES PERFECT  
HEALTH

USE

**AL'S MILK BREAD FOR HEALTH  
AND PROSPERITY**

MARSHALL BAKING CO.

# THE GRIDDLE

Your Patronage Pleases Us  
and it is a  
Pleasure to Please You



## GIVE US A TRIAL



### Fremont & Wallace

Marshall Sedalia

1911

1935

Headquarters  
for  
The Proper Apparel  
for  
COLLEGE MEN



MICHAELS STERNS CLOTHES  
DOBBS HATS  
WILSON BROS. FURNISHINGS

### Cooper Clo. Co.

Page Eighty-Eight

## PACKAGE CANDY

WHITMAN - LIGGETT

### RED CROSS PHARMACY

G. C. WATERS, Proprietor

### The REXALL Store

KODAKS, PRESCRIPTIONS,  
SODA WATER, AMATEUR  
FILM DEVELOPING

PHONE 250

Marshall, Missouri

## Richman's

STYLE SHOP

### Ladies' Ready-to-Wear

### The New Things First

East Side Square



*Ice Cream Sherberts  
Pure, Fresh, Home-  
made Candies*

*We Are Exclusive Agents of*

Mrs. Stover's Bungalow  
Candies

## FROZEN GOLD

*Cream of Creams*

Manufactured by

MISSOURI ICE CREAM  
COMPANY

MARSHALL, MISSOURI

## Daniels Lumber Co.

*Everything the Builder Needs*

Phone 137

R. M. PHILLIPS, Manager

## The Democrat News Printing Company

Appreciates the patronage  
it has had the last year  
from Missouri Valley Col-  
lege and its students.

This company stands  
ready at all times to serve  
the college and its students  
in whatever capacity its  
assistance may be sought.

R. N. HAINS, *President*  
G. T. DUGGINS, *Secretary*

Marshall — Missouri

WALL PAPER  
PAINTS

CURTAINS  
DRAPERIES

J. P. Johnson

LINOLEUMS  
WINDOW SHADES

GIFTS  
LAMPS

*Ride and Drive*

### The NEW FORD V-8

The Car Without a Price Class

## W. P. Thomas Motor Company

Page Eighty-Nine

MAUD'S  
The Flour That Satisfies  
Rea & Page Milling  
Co.

MARSHALL MISSOURI

EWELL'S, INC.

"Fone for Food"  
GROCERIES, MEATS, FRUITS,  
VEGETABLES  
Free Delivery

Phone 63-64 East Side Square

McKinney  
Motor Co.

Phone 213  
Marshall, Missouri

CHEVROLET  
Service Sales

Eat at  
CALL'S CAFE

Because

They serve the best meals,  
short orders, and sandwiches  
in town.

TELEPHONE 284

Page Ninety

The Hansbro  
Confectionery

We Appreciate the College  
Patronage

WE DELIVER

N. Side Square Phone 1440

Hershberger & Sons

Stewart-Warner Radios and  
Electric Refrigerators  
Hardware and Sporting Goods

East Side Square Phone 122

VAN DYKE & CO.

LOANS  
INSURANCE  
ABSTRACTS

DEPENDABLE INSURANCE  
and INVESTMENT SERVICE

Telephone 123

Colvert Bros.

Franklin County Illinois  
Red Label and Imperial Coal

TRUCK HAULING

Office Phone 89 Yard Phone 76

The Sabiduria Staff  
Appreciates the Support given by the  
Advertisers

EDDIE'S  
HAMBURGER INN  
LUNCHES, SANDWICHES,  
CHILI, and GOOD COFFEE  
—Curb Service—  
One Block West of Square on North Street  
OPEN ALL NIGHT

Wm. S. Laurie

Drug and Toilet Articles  
PHONE 4

Northwest Corner of Square

E. M. WRIGHT  
Dry Goods

East Side Square  
Marshall, Missouri

SHRYACK-WRIGHT  
Grocery Company  
WHOLESALE GROCERIES  
AND NOTIONS

Phone 23  
Marshall, Missouri

Marshall Laundry Co.  
We Cater to Folks  
Who Care - - - -

Phone 209

FRED DOANE, Manager

COOK'S PAINTS WALLPAPER  
Mark's Brightenup  
Store  
PHONE 62

Southwest Corner of Square  
GLASS WINDOW SHADES

LATIMER  
GROCERY

"Nothing Too Good to Eat"

North Side of Square  
PHONE 11

For  
Smart Ladies' Apparel

Visit

ANDERSON'S

Marshall's Smartest Shop  
for Women

Frigidaire &  
G. E. Refrigerators  
Philco Radios  
Maytag Washers & Ironers

Easy Terms

Wenzel & Jackson  
111 E. North

Write More Letters  
Attractive and Appropriate All  
White Stationery

Per Box 50c

Hatcher Drug Co.  
East Side

Page Ninety-One

## Fuller's Cash Store

Dry Goods, Ready-to-Wear and  
Millinery

**WE SELL**

Humming Bird Hose  
Gossard Corsets  
Betty Rose Coats  
Charlotte Dresses

## John T. Davis, Ph. G.

*"Your Druggist"*

MARTHA WASHINGTON CANDIES  
ELIZABETH ARDEN TOILETRIES

*Everything a First Class Drug  
Store Should Have*

Sunset Side Square

## **BOULWARE**

QUALITY CLEANERS

Telephone 302 115 E. Arrow St.  
Marshall, Missouri

## A. T. SWISHER

INSURANCE, LOANS, ABSTRACTS  
FIDELITY BOND

Phone 209

Ship Via

## **BROOKS TRUCK LINES**

MARSHALL

PHONE 423

Kansas City Depot—  
BROOKS TRUCK CO.  
1319 St. Louis Ave.

Phone Harrison 0500

*Page Ninety-Two*

St. Louis Depot—  
MOTOR FREIGHT TERMINALS, Corp.  
732 So. 7th St.

Free Pick-Up

Phone Central 0441

## The Sweet Shop

DANCING  
HOT SANDWICHES  
CHILI

Phone 140

*Merchants of Good  
Appearance*

## Marshall Cleaners

EDDIE HANSBROUGH

## *Monette*

## *Beauty Shop*

*Permanent Waving a Speciality*

PHONE 164

Make Our Bank Your Bank

# WOOD & HUSTON BANK

Member Federal Reserve System

Safety Deposit Boxes for Rent

**SINCE 1874**

For the Ladies

HIGH STYLE SHOES  
BAGS AND HOSIERY

For the Men

HIGH STYLE SHOES  
HATS AND HOSE

at

## Bihl Shoe Store

EAST SIDE OF SQUARE

*"Where Shoe Fitting Is a Fine Art"*

For

School Supplies  
Greeting Cards  
*and Gifts*

All Roads Lead to

## **FISHER'S BOOK & PTC. CO.**

North Side Square

Phone 13

*Page Ninety-Three*

SHOES

CLOTHING

FOR NEARLY 50 YEARS  
THIS STORE HAS BEEN THE  
DOWNTOWN STORE FOR  
M. V. C. STUDENTS

**Rose & Buckner**

*The Well Informed Prefer Ice  
Refrigeration Always*

MARSHALL ICE and FUEL CO.

Dealers in Temperature

Exclusive Dealers of Sahara and Mark Twain Coal  
Telephone 31



For those you love, consider the gift  
that is rich in sentiment. Your friends  
can buy anything you can give them,  
except---your photograph.



*McChesney's Studio*

# MARSHALL DRY GOODS CO.

EAST SIDE SQUARE

## LADIES' READY-TO-WEAR

Hosiery  
Corsets  
Millinery  
Lingerie

## MEN'S AND BOY'S FURNISHINGS

Piece Goods  
Linens  
Domestics  
Curtains

Quality Merchandise at Lowest Possible  
Prices

Vandiver Mortuary

*Ambulance Service*

K. P. McCrary

DON SHORT

H. M. Buck Implement  
Company

FARM MACHINERY, HARNESS,  
WIRE FENCE

MARSHALL, MISSOURI

MEMBER UNITED TYPOTHETAE OF AMERICA

## DON'T COME TO US FOR "JOB" PRINTING

We don't do it--can't do it, in fact.  
We are tuned up to something bet-  
ter. But we DO do

## COMMERCIAL PRINTING

~~~~~  
**That's Our Business**  
~~~~~

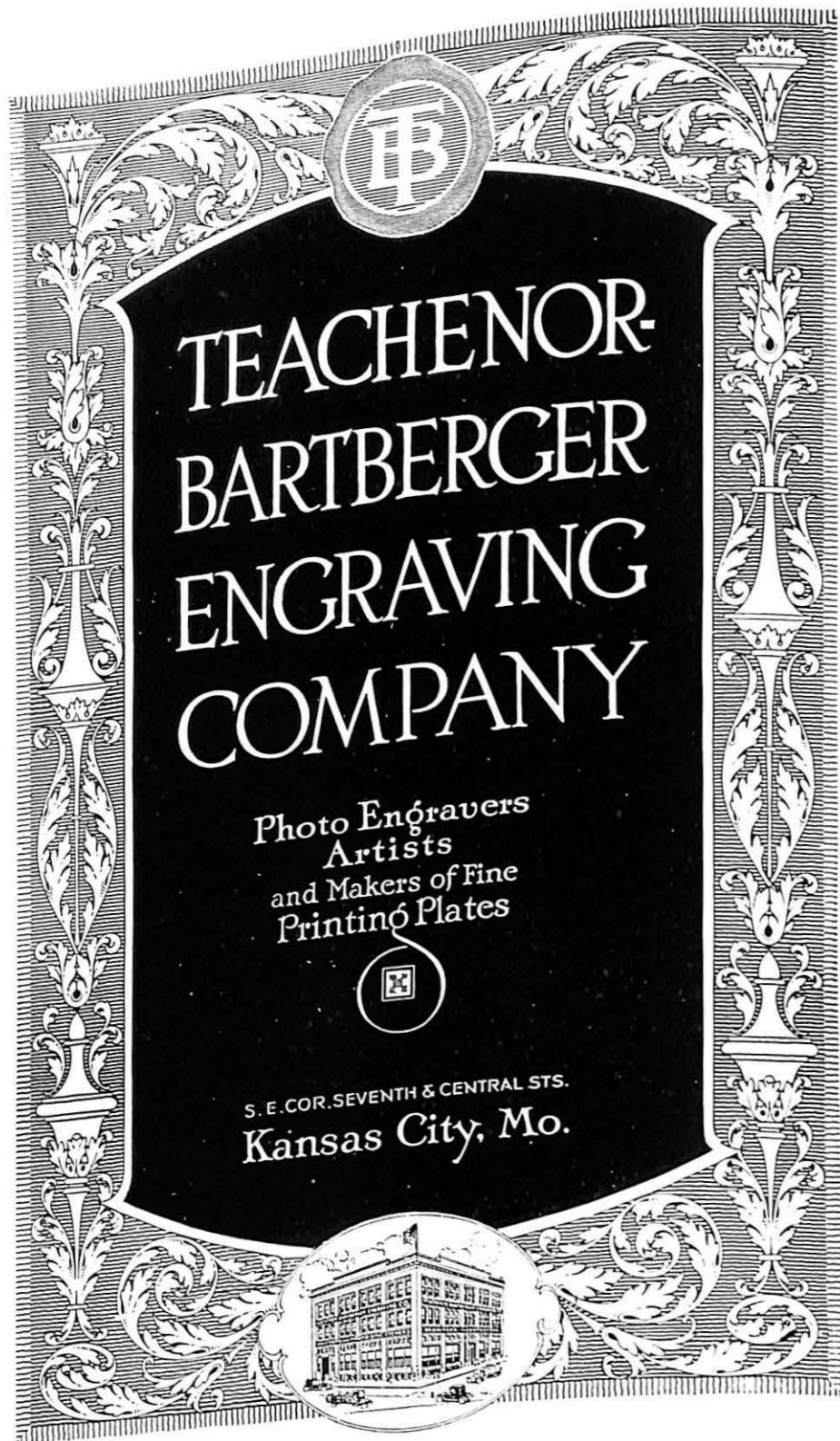
We have studied printing, just as an artist studies painting or music, a doctor studies medicine, a scientist the science he is interested in. Printing is our life work and we love it for what it can do for us and for others. We have been printing college and high school annuals for the past twelve years. Included on our lists are some of the best colleges and high schools in Missouri.

**The William Jewell Press  
Liberty, Missouri**

ESTABLISHED 1917

WE HELP YOU PREPARE COPY, SELECT CORRECT TYPE FACES, PAPERS AND COLORS OF INK

MODERN PRINTING--NOT THE MODEL VARIETY SOLD AT "PAUPER PRICES"






**TEACHENOR  
BARTBERGER  
ENGRAVING  
COMPANY**

Photo Engravers  
Artists  
and Makers of Fine  
Printing Plates

  
S. E. COR. SEVENTH & CENTRAL STS.  
Kansas City, Mo.



*Autographs*