

MISSOURI VALLEY COLLEGE



3 7010 00239643 6

*The*  
SABIDURIA



MVC  
378  
Sa 1  
1928  
C.2

1928

THE 1928  
SABIDURIA

COPYRIGHT  
1928

EDITOR - - *Joe Price Frerking*  
BUSINESS MANAGER - *Ray Harre*



THE 1928  
SABIDURIA



*Published by*  
STUDENT SENATE  
*of* MISSOURI  
VALLEY COLLEGE

MARSHALL, MISSOURI

# DEDICATION



To  
LEN D. MURRELL

A CITIZEN of Marshall who has unceasingly displayed that spirit of loyalty and sacrifice which has as its aim the development of men and women of lofty ideals and the creation of a bigger Missouri Valley—we earnestly and respectfully dedicate the  
1928 SABIDURIA



L. D. MURRELL

6/58

36916  
4.2

# FOREWORD



TO catch and hold  
for future ears  
the echo of our hur-  
rying footsteps—the  
life and laughter of  
our Alma Mater—  
this is the task of the  
1928 SABIDURIA

# CONTENTS



## ORDER OF BOOKS

Views  
Queens  
Administration  
Classes  
Athletics  
Organizations

IN MEMORIAM  
DR. ALBERT MCGINNIS

CAMPUS





*Arch*



*Campus*

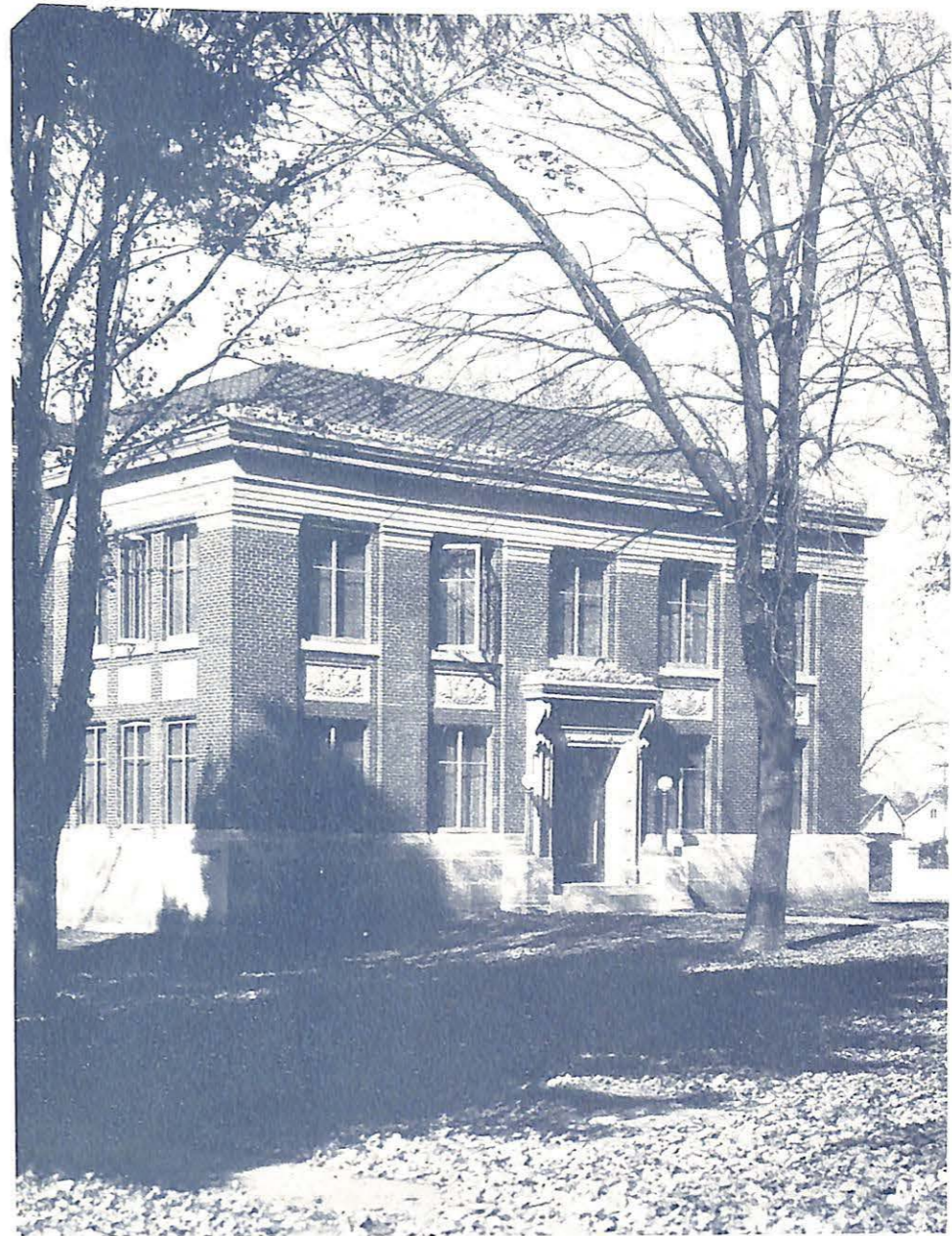


CRESSWELL  
K.C. Mo.  
#8

*Administration Building*



*Girls' Dorm*

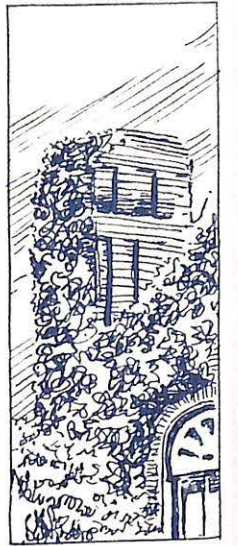


*Library*



*Stack Room*

QUEENS





*Miss Patricia Larkin*  
May Queen



*Miss Dorothy Hyland*  
Senior Queen



*Miss Emily Miles*  
Junior Queen



*Miss LoNeta Darrowe*  
Sophomore Queen



*Miss Eleanor Ault*  
Freshman Queen

## "Pat"

Patient, and pure as the lily,  
Autocrat over the good,  
True to the right, never silly,  
Ready to do what she should;  
Into whatever is prudent,  
Called by her pals "Princess Pat,"  
Innocent, free, and a student,  
Always a Larkin' at that.

Listen to her singing  
And hear the hum of winging,  
Resounding through the valley lanes of light,  
Kindling love and beauty,  
Inspiring hope and duty—  
Nature with her finest airs bedight.

Queen of the May we have crowned you  
Under the starlight.  
Evening rays, shed around you,  
Eyes of friends on the far-light,  
Nature, and worth have renowned you.

—I. N. E.

## ADMINISTRATION





GEORGE H. MACK, D. D., B. S.  
*President of Missouri Valley College*



WILLIAM HENRY BLACK, A. M., D. D., Litt. D., LL. D.  
*President Emeritus of Missouri Valley College*



SAMUEL R. BRADEN, Ph. D.  
*Dean of Missouri Valley College*



IVAH MERWIN BARRETT, A. B.  
Dean of Women  
English Literature



JOHN J. DYNES, A. M.  
Registrar  
Education, Psychology



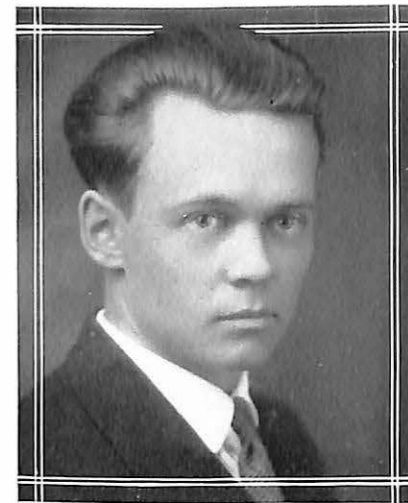
ISAAC N. EVRARD, A. B., Litt. D.  
English, Language, Literature



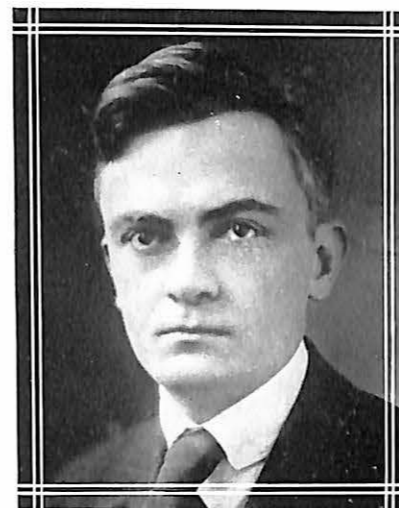
PALMER T. HOGDENSON, M. B. A.  
Sociology, Economics



MARION HAYES, B. S.  
Assistant in Chemistry and Physics



EARL PETTIJOHN, Ph. D.  
Chemistry, Physics



ROGER F. GEPHART, Ph. D., A. B., A. M.  
Head of Foreign Language Department  
French Instructor



ANNA VON TOBEL, A. M.  
Spanish



SAMUEL GREENWOOD, A. B.  
*Latin, Greek;  
Public Speaking*



BENJAMIN L. SEAWELL, B. Pd., B. S.  
*Biology*



JOHN M. PENICK, A. M.  
*History*



WILLIAM I. FERGUSON, A. M.  
*Mathematics*



CARL I. DUNCAN, A. B.  
*Executive Secretary  
Accounting*



ADA DINSMORE, M. S.  
*Home Economics*



CLAUDE L. FICHTHORN, A. B., Mus. B.  
*Associate American Guild of Organists;  
Piano, Voice, Pipe Organ, Theory*



ARTHUR T. VAWTER, Mus. B.  
*Violin, Wind Instruments*



HENRI R. GODFRIAUX, A. B.  
*Physical Education*

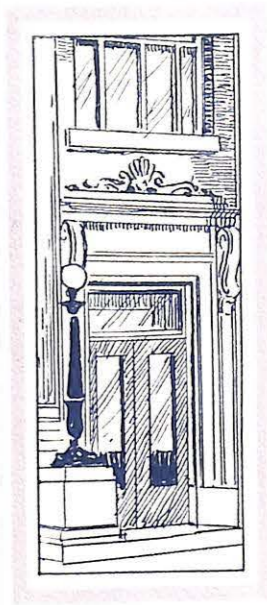


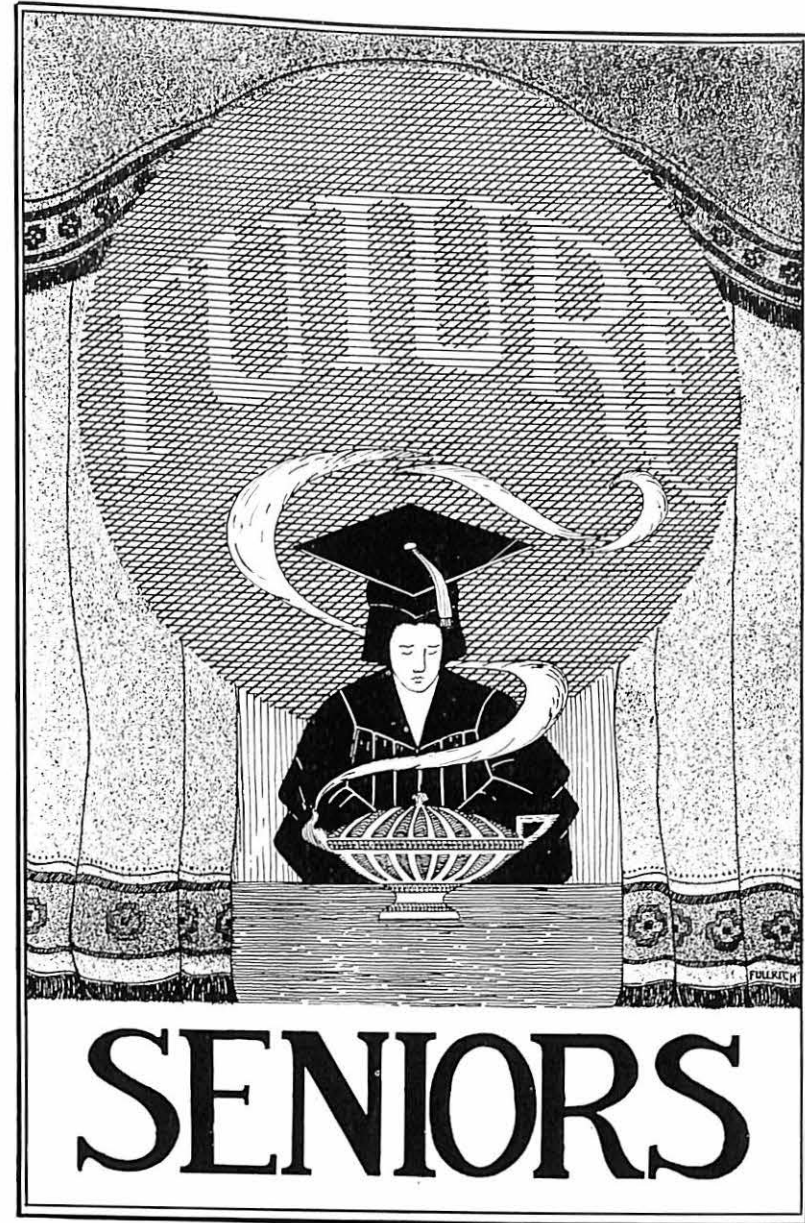
STELLA B. HICKS, M. Litt.  
*Librarian*



ROY W. NOLTE, A. B.  
*Field Secretary of Missouri Valley College*

# CLASSES





# SENIORS

## Senior Class

ON September 1, 1924, the Freshman Class of Missouri Valley College mustered eighty-four members to matriculate under Professor Evrard in English I; to study Biology under Professor Seawell; math with Professor Ferguson and Bible with Dr. Black. The Class elected as its officers: Rolland Snuffer, President; Charles Fisher, Vice-President, and Florence Coyne, Secretary-Treasurer. This Class contributed several of its members towards the activities of the school. The next year the officers were John Phipps, President; Patricia Larkin, Vice-President, and Norma Putnam, Secretary-Treasurer. The Class officers for the Junior year were Lorenzo Parker, President; Hurston Phillips, Vice-President, and Dorothy Doane, Secretary-Treasurer. But thirty-seven seniors re-entered the college portals in the fall of 1928, with the feeling that they were on the "last lap." Of these, "Pete" Morgey was elected President, C. J. Wenzel, Vice-President, and Elizabeth Pemberton, Secretary-Treasurer.



CONTE CLAY FLEMING  
A. B.  
*Marshall, Missouri*  
Dramatic Arts Club; Valkyr Club.

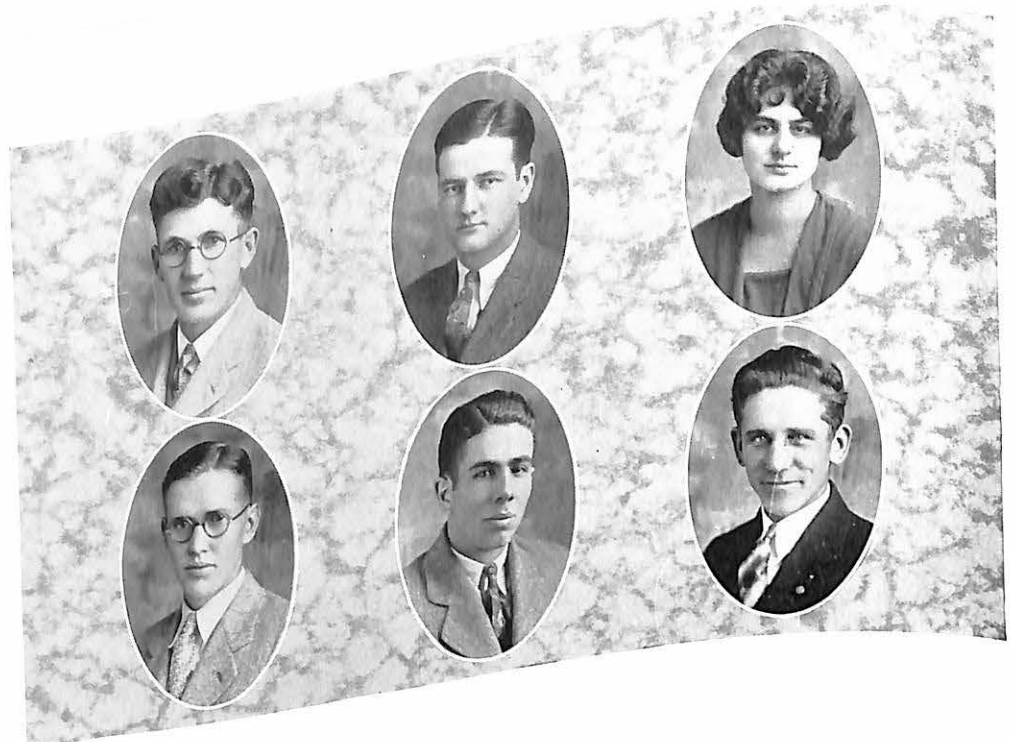
JOHN EDWIN ALLEN  
A. B.  
*Bowling Green, Missouri*  
Dramatic Arts Club; Glee Club; Orchestra.

PATRICIA H. LARKIN  
A. B., Mus. B.  
*Waverly, Missouri*  
Valkyr Club; House Council; Vice-President Sophomore Class; Y. W. C. A. Cabinet; Quartette Glee Club; Asst. Director, Glee Club; Sabiduria Staff; Executive Committee, Dramatic Arts Club; May Queen; Freshman Class Queen.

DOROTHY SCHOFIELD DOANE  
Ph. B.  
*Marshall, Missouri*  
Valkyr Club; Y. W. C. A. Cabinet; Junior Class Queen; Secretary-Treasurer, Student Body; Senior Senate Representative; President, Dramatic Arts Club; Orchestra.

WINONA MERRITT  
Ph. B.  
*Slater, Missouri*  
Y. W. C. A.; Literary Society.

GLADYS G. GOLLONG  
A. B.  
*Marshall, Missouri*  
Y. W. C. A. Cabinet; Dramatic Arts Club.



RENHARD E. DREGER  
Ph. B.  
*Alberta, Canada*  
Gospel Team; Y. M. C. A.;  
Glee Club; Forum.

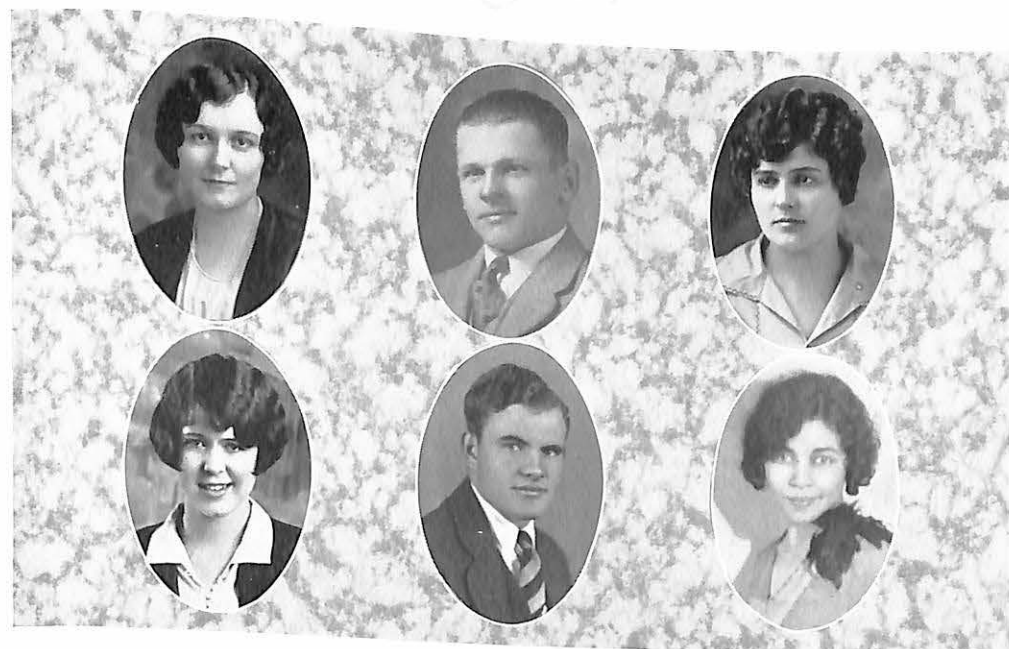
CHARLES G. FISHER  
A. B.  
*Marshall, Missouri*  
Vice-President Junior  
Class.

ELIZABETH GUTHREY  
A. B.  
*Miami, Missouri*  
Basket Ball.

JOHN HERNDON  
A. B.  
*Blue Springs, Missouri*  
Track; "V" Club.

C. J. WENZEL, JR.  
B. S.  
*Marshall, Missouri*  
Delta Staff '28.

KENNETH D. WILLOUGHBY  
B. S.  
*Farmington, Missouri*  
Y. M. C. A. Cabinet; Gos-  
pel Team.



NORMA E. PUTNAM  
A. B., Mus. B.  
*Marshall, Missouri*  
Dramatic Arts Club; Sec-  
retary-Treasurer, Unit Club;  
Vice-President, Y. W. C. A.;  
President, Y. W. C. A.; May  
Queen '27; Glee Club; Man-  
ager, Glee Club.

JAMES O. CRANE  
B. S.  
*Slater, Missouri*  
University of Missouri.

ESTELLE PALMER  
B. S.  
*Clifton Hill, Missouri*  
Kirksville Teachers Col-  
lege; Y. W. C. A.; Orchestra.

GILEEL COFFMAN  
Ph. B.  
*Marshall, Missouri*  
Y. W. C. A.; Sabiduria  
Staff; Basket Ball.

RAY HARRE  
A. B.  
*Marshall, Missouri*  
Student Senate; Business  
Manager of Sabiduria.

RUBIEFERN HUDSON  
A. B.  
*Iola, Kansas*  
Valkyr Club; Dramatic  
Arts Club; Y. W. C. A. Cab-  
inet; Literary Society; Forum  
Club; "Old Days in Dixie."



FRANCES THOMPSON  
A. B.  
Marshall, Missouri  
Y. W. C. A.

DORA LEE MORRISON  
A. B.  
Russell, Kansas  
Glee Club; Valkyr Club;  
"M" State Athletic Letter;  
Editor-in-Chief of Delta;  
"Only Me;" "If I Were King."

MARGARET STEVENSON  
B. S.  
Boise, Idaho  
Delta Staff; Glee Club;  
Quartette; Secretary of Dramatic Arts Club; Sabiduria Staff; Valkyr Club; House Council.

NAOMI HARLAN  
B. S.  
Salisbury, Missouri  
Y. W. C. A. Cabinet; Dramatic Arts Club; Valkyr Club.

LESTER ROBB  
B. S.  
Wentworth, Missouri  
Student Senate; Y. M. C. A. Cabinet; Football; Executive Committee of Dramatic Arts Club.

MARY KATHRYN JOHNSON  
A. B., Mus. B.  
Marshall, Missouri  
Kirksville Teachers College; Dramatic Arts Club; Glee Club; Quartette; Valkyr Club.



MARGARET L. ALT  
A. B.  
Norborne, Missouri  
Maryville, S. T. C.; Y. W. C. A.

ANNABEL BOOTH  
A. B.  
Marshall, Missouri

KATHERINE MAUDE STOFFER  
A. B.  
Napton, Missouri  
Y. W. C. A.

MERIAM RUTH RENNISON  
A. B., Mus. B.  
Marshall, Missouri  
Y. W. C. A.; Glee Club.

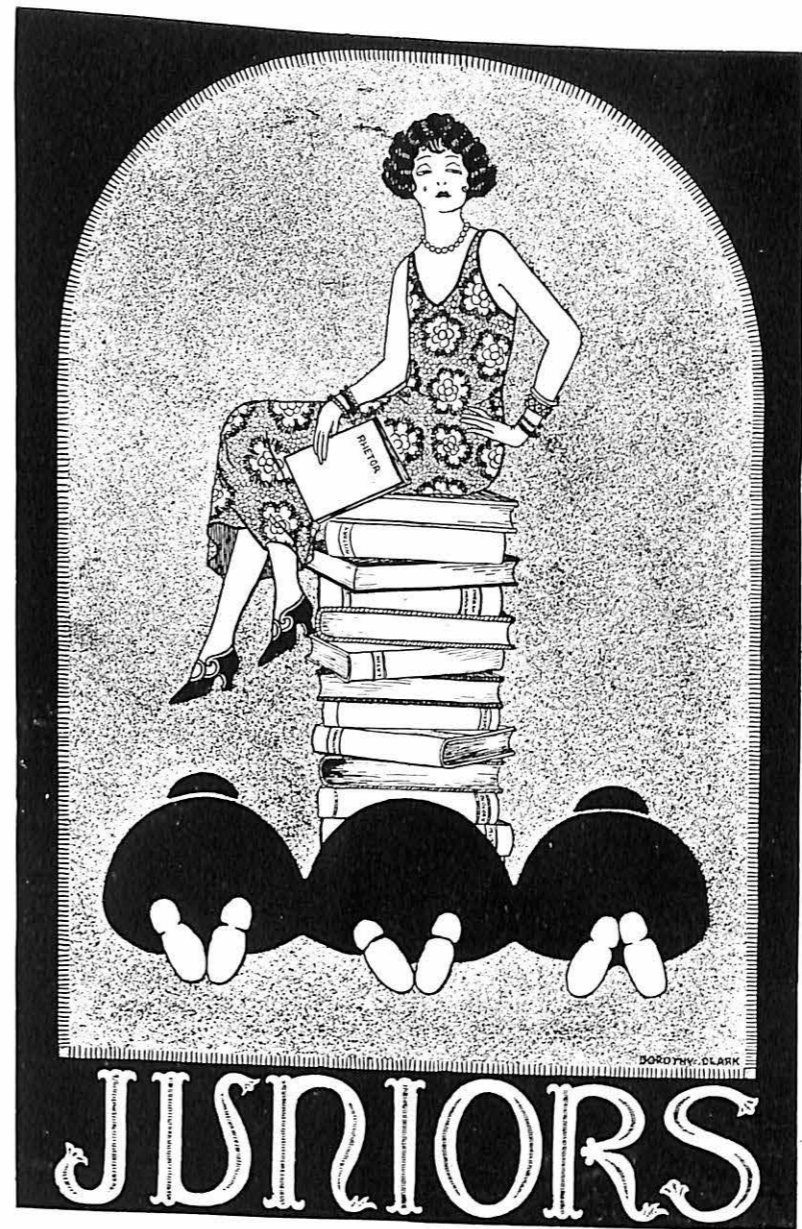
JAMES F. STAGE  
B. S.  
Aullville, Missouri  
Treasurer of Forum Club; Gospel Team; Y. M. C. A. Cabinet.

MARY E. WEBSTER  
A. B.  
Y. W. C. A.



ELIZABETH GILLETTE  
A. B.  
*Marshall, Missouri*  
Literary Society; Y. W.  
C. A.; Basket Ball; Sabiduria  
Staff.

ELIZABETH PEMBERTON  
B. S.  
*Slater, Missouri*  
Y. W. C. A. Cabinet; Liter-  
ary Society; Secretary-Treas-  
urer of Senior Class.





ETHEL CLOUGH  
*Marshall*

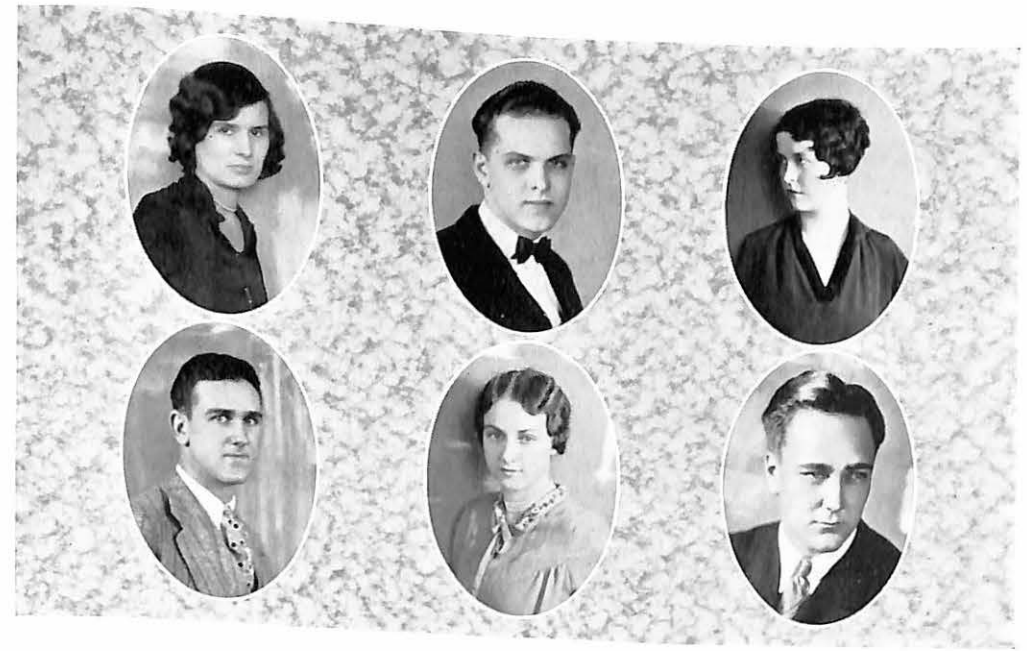
GEORGE FISHER  
*Marshall*

FRANCES LOU FLETCHER  
*Alma*

DOROTHY HAWKINS  
*Marshall*

RUTH HUYETT  
*Marshall*

CASSIE SCHANZ  
*Blue Lick*



OLIVIA WINCHELL  
*Clinton*

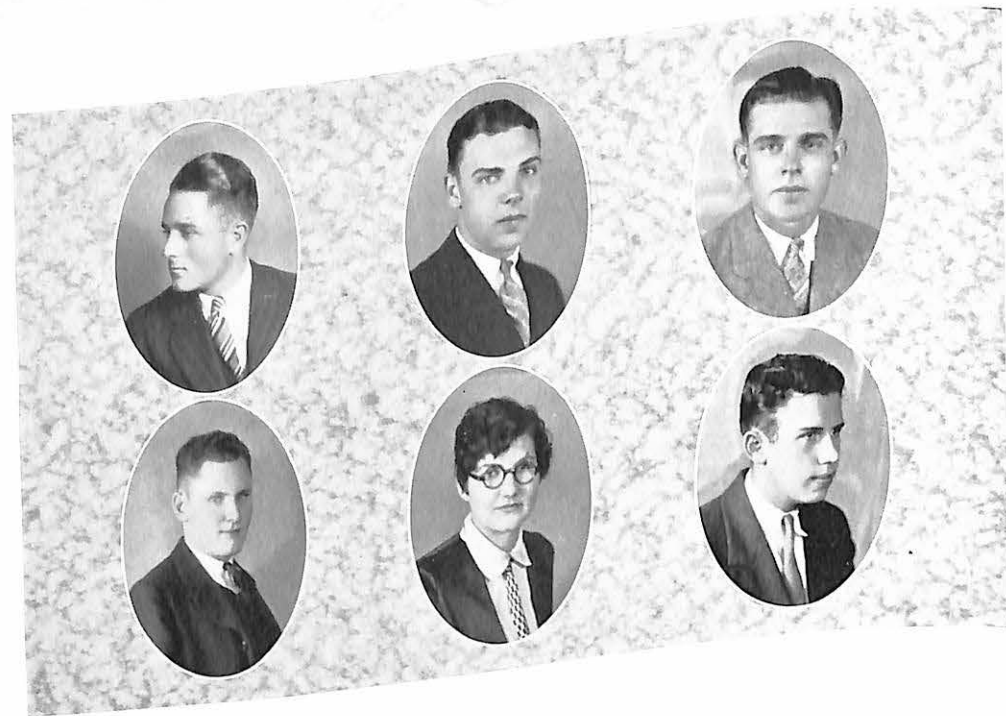
JESSE WALL  
*Marshall*

EMILY MILES  
*Marshall*

ORVILLE WRIGHT  
*Prairie Hill*

VIRGINIA MONTAGUE  
*Marshall*

RUSSELL LAMAR  
*St. Joseph*



RAYMOND CASSIDAY  
*Vandalia*

MARK HOLCOMB  
*Centerville*

KENNETH CONRAD  
*Prairie Hill*

REUBEN HUME  
*Armstrong*

ALICE JACOBY  
*Marshall*

JORDAN KELLING  
*Waverly*



RALPH THOMAS  
*Nebraska City, Nebr.*

CORINE BACON  
*Marshall*

ALLEN COFFMAN  
*Marshall*

LUCILLE LARUE  
*Marshall*

CURTIS THOMAS  
*Marshall*

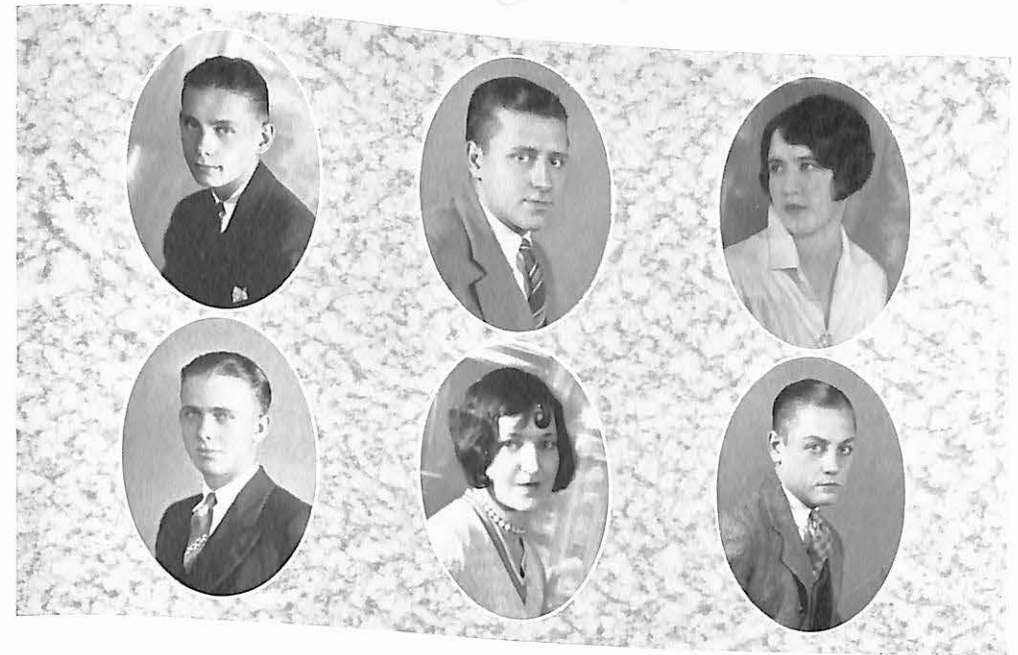
MARJORIE SNODDY  
*Miami*

## The Sophomore Class

THE Sophomore Class has been outstanding throughout the entire year. It produced Mike Haggard, Pat Patterson and Charley Rioth for the All-State Football Team, and several of its members have been leaders of the campus organizations. From this Class will come three of the officers of the student body for the coming year: George Brock, President of the Student Body; William Sterrett, Vice-President, and Marjorie Swisher, Secretary and Reader.

### CLASS OFFICERS

President . . . . .	MILESS HAGGARD
Vice-President . . . . .	GEORGE BROCK
Secretary-Treasurer . . . . .	ZELMA HAHN



ROBERT W. CAMPBELL  
*Marshall*

VIRGIL BLOSSOM  
*Brookfield*

FRANCES FINKS  
*Calhoun*

ADRIEN HESS  
*Aultville*

LAURA BUHLIG  
*Alma*

RALPH YANCEY  
*Malta Bend*



FLORENCE LARUE  
*Marshall*

WILLA JOSE  
*Marshall*

LUELLA JETT  
*Miami*

EDWIN BROWN  
*Marshall*

MARY PALMER  
*Clifton Hill*

HEINRICH KLINGE  
*Marshall*



GEORGE BROCK  
*Hickman Mills*

JESSAMINE TARVER  
*Gillette, Wyoming*

NOEL FERGUSON  
*Warsaw*

EUGENE BRASHER  
*Orrick*

GLADYS SIMMONS  
*Malta Bend*

DOUGLAS KELLING  
*Waverly*



J. W. SCOTT  
*Weston*

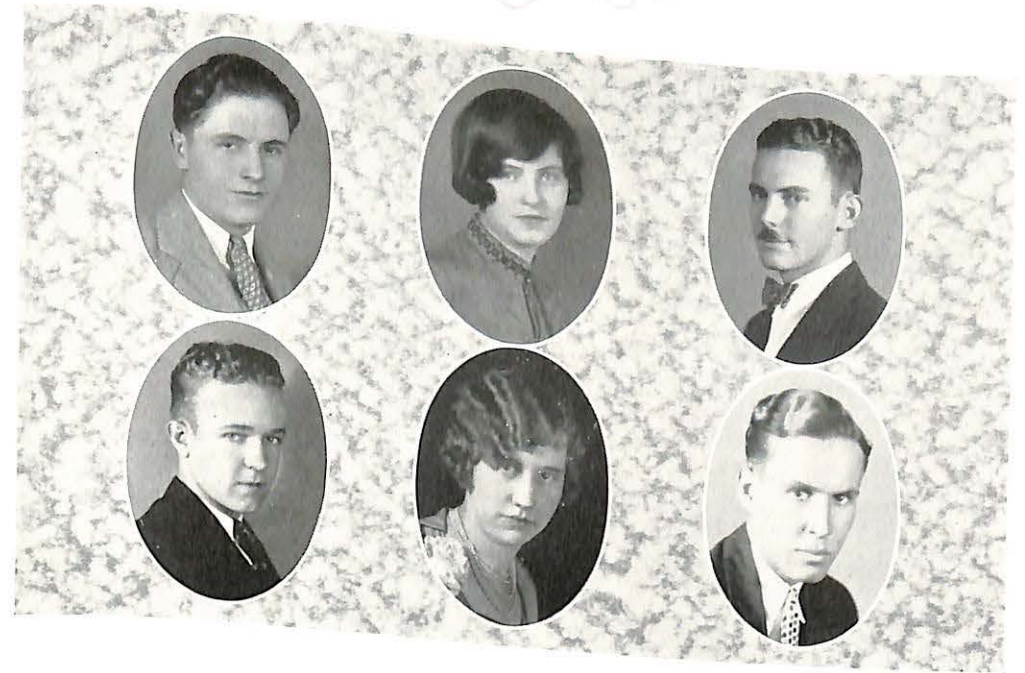
MARGARET ROBINSON  
*Kansas City*

RAYMOND YANCEY  
*Malta Bend*

CECIL PATTERSON  
*Odessa*

LONETA DARROW  
*Golden City*

WILLIAM READING  
*Curryville*



FRED BROWN  
*Slater*

HELEN BIERBAUM  
*Lecassy*

JOHN R. HAGAN  
*Vandalia*

CHARLES L. BACON  
*Marshall*

MARY LOU CROSS  
*Roanoke*

ADOLPHUS BORBERG  
*Union*



GEORGIA MAE TERRELL  
*Sweet Springs*

LYLE THWEATT  
*Marshall*

MARY ELIZABETH PERRY  
*Marshall*

ELEANOR THOMPSON  
*Marshall*

WILLIAM STERRETT  
*Slater*

HAZEL PUTNAM  
*Marshall*



MARY E. DOANE  
*Marshall*

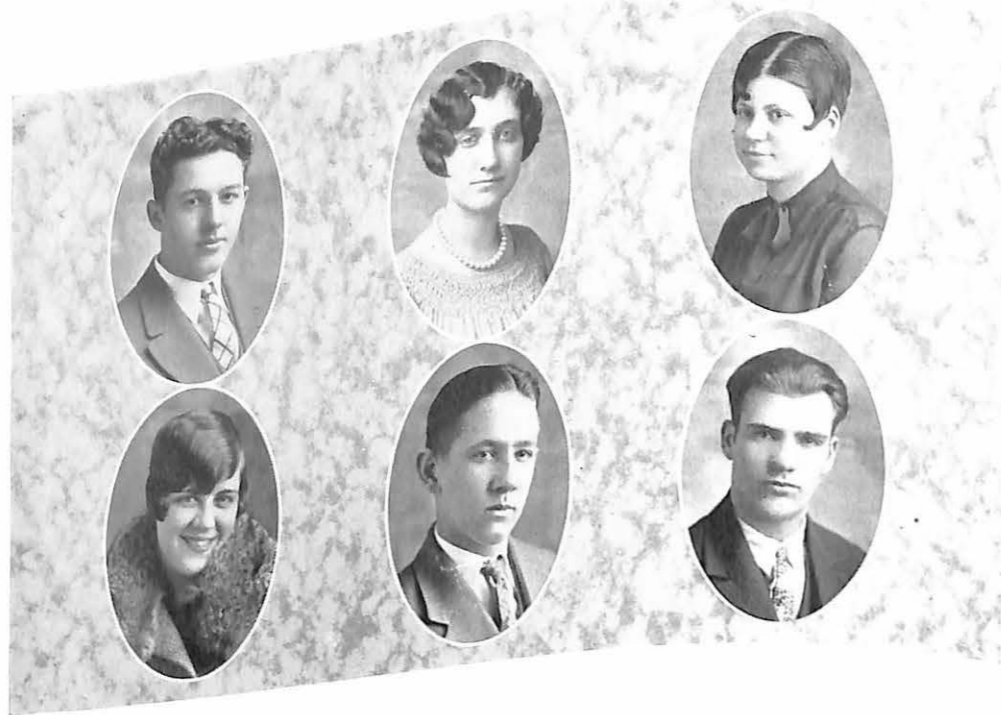
FRANCES GOLLONG  
*Marshall*

WILLIAM STOLL  
*Mt. Leonard*

MILESS E. HAGGARD  
*Sweet Springs*

WILLARD A. PAGE  
*Rochester, N. Y.*

ZELMA E. ZAHN  
*Marshall*



PRESTON AMOS  
Kansas City

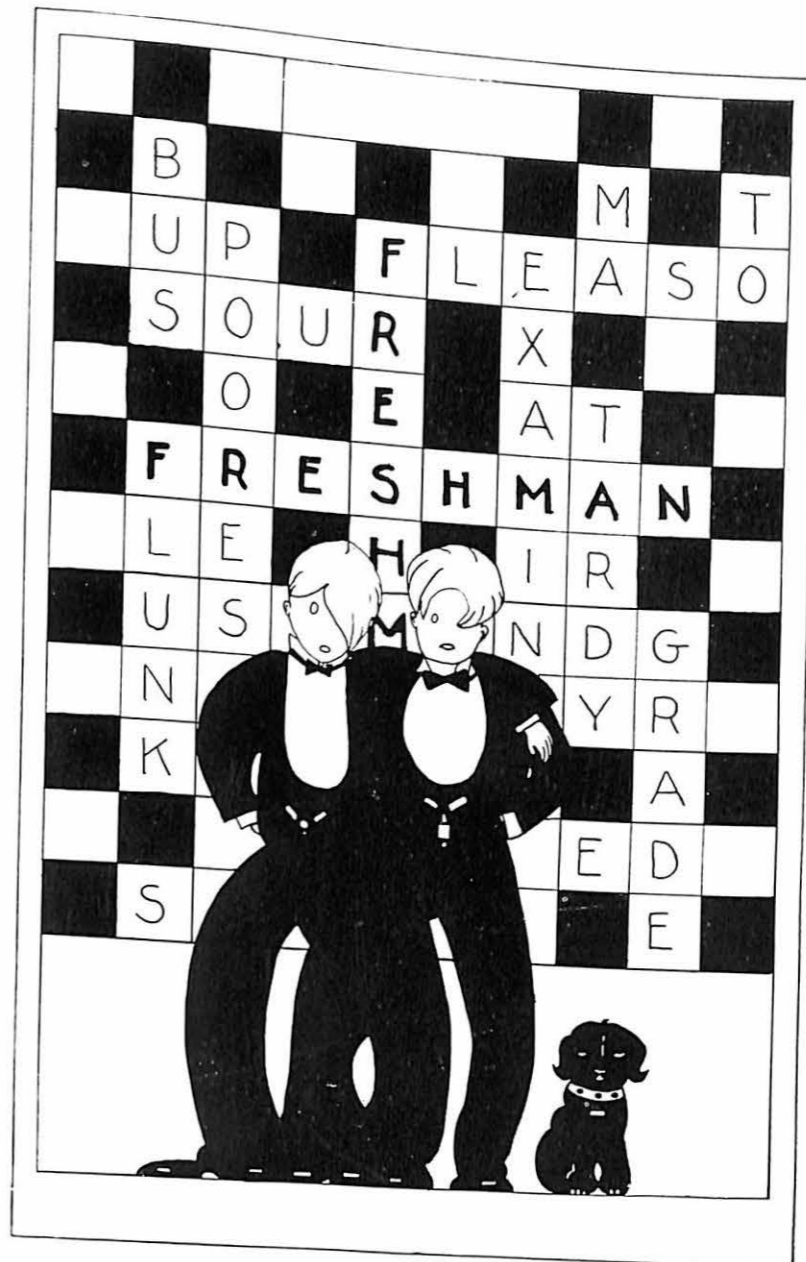
VEVA BARBER  
Orrick

KATHRYN ROBERTS  
Marshall

HELEN MAHR  
Indianapolis, Indiana

PATRICK PHELAN  
Marshall

WALTER SCHMIDT  
Alma



## Freshman Class

THIS year's Freshman Class is one of the largest that has ever entered Missouri Valley College. They are all of the type of student that we want here, and we are proud of their spirit in co-operation and entering into the organizations and activities of the school.

### CLASS OFFICERS

President . . . . .	CHARLES OLDHAM
Vice-President . . . . .	ELEANOR AULT
Secretary-Treasurer . . . . .	EUGENE MOORE

VIRGINIA PETERSON  
Marshall, Mo.

WILLIAM HARRIMAN  
Pilot Grove, Mo.

DALENE PAGE  
Marshall, Mo.



MILDRED HARTMAN  
Marshall, Mo.

MILDRED CROWDER  
Sweet Springs, Mo.

ROBERT BROWN  
Slater, Mo.



TERRILL THOMSON  
Golden City, Mo.

MARY BOWER THRELKELD  
Paris, Mo.

CLIFTON WILCOX  
Odessa, Mo.



OLIVE CREEL  
Carrollton, Mo.

JEWELL WEST  
Marshall, Mo.

KATHRYN LAWLESS  
Marshall, Mo.



DAVID GORE  
Marshall, Mo.

SYLVIA HAMILTON  
Hickman Mills, Mo.

EILEEN ROBERTSON  
Yates, Mo.





PRISCILLA MART  
*Kansas City, Mo.*  
OLLIE WHITAKER  
*Slater, Mo.*  
EUGENE MOORE  
*Marshall, Mo.*

NADEEN HOLLINGSWORTH  
*Golden City, Mo.*  
ARTHUR SAPPINGTON  
*Marshall, Mo.*  
CLARA LINBERG  
*St. Louis, Mo.*

HAROLD POOLE  
*Neosho, Mo.*  
LEONA WHITAKER  
*Slater, Mo.*  
WALLACE BLAKELY  
*Armstrong, Mo.*

MAURINE RUNKLE  
*Eldora, Iowa*  
GLENWOOD DANIEL  
*Bunceton, Mo.*  
VIRGINIA SCOTT  
*Greenfield, Mo.*

MARY ANN BRIDGES  
*Clifton City, Mo.*  
JOHN CRISP  
*Greenfield, Mo.*  
IRENE DOUGHTY  
*Marshall, Mo.*

RICHARD HARPER  
*Butler, Mo.*  
MARIE MCINTOSH  
*Sullivan, Mo.*  
RUTH CASEBOLT  
*Marshall, Mo.*

LESLIE NEER  
*Higginsville, Mo.*  
ERMA SOBOLEWSKI  
*Vandalia, Mo.*  
THEODORE MILLS  
*Neosho, Mo.*

CHARLES OLDHAM  
*Hickman Mills, Mo.*  
RAYMOND ELLIOTT  
*Bunceton, Mo.*  
PEARLETTA CARR  
*Slater, Mo.*

FRANCES MUSSELMAN  
*Gallatin, Mo.*  
ALBERT STAATS  
*Marceline, Mo.*  
ELLEN McROBERTS  
*Malta Bend, Mo.*

JOHN CARSON  
*Golden City, Mo.*  
CARL LEE SHELTON  
*Gallatin, Mo.*  
LAWRENCE McROBERTS  
*Malta Bend, Mo.*





TRUMAN HALL  
*Marshall*  
GEORGE EVANS  
*Marshall*  
ROBERT THOMPSON  
*Napton*

FRANCES PATTERSON  
*Marshall*  
ANNA CORINE BROWN  
*Marshall*  
DOROTHY WEBER  
*Marshall*

ESTHER VALENTINE  
*Marshall*  
ROBERT GIBSON  
*Marshall*  
WINFRED MILLER  
*Pleasant Hill*

BARNES PEMBERTON  
*Marshall*  
LOUISE HUTCHERSON  
*Marshall*  
ELEANOR PERRY  
*Marshall*

CLIFFE FIFE  
*Armstrong*  
ELEANOR AULT  
*Carterville*  
EDNA COX  
*Kansas City*

# ATHLETICS



## Football



HENRI R. GODFRIAUX  
*Director of Athletics*

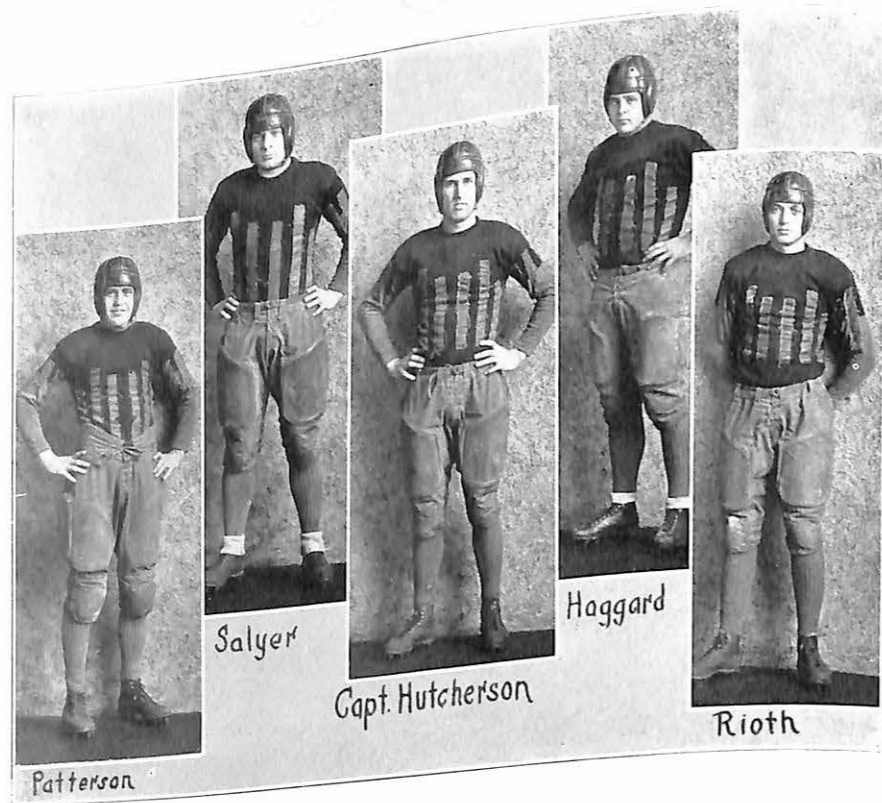
THE success of the squad of 1928 can largely be attributed to the untiring efforts of Coach Godfriaux. His ability to mold into a rhythmic combination was shown throughout the season's playing, and resulted in a championship team for Valley. His good teams and the huddle system which he has worked out with them to a pleasing degree of satisfaction, have put Missouri Valley football on our Conference map.



DR. GEORGE T. NUCKLES



Page 59



## Vikings on the "All-Conference Team"

**CAPTAIN HUTCHERSON**, a worthy successor to the great Viking leaders of the past, a man of action rather than words. A great player in coming out of the line to form interference for ball luggers. A unanimous selection for All-Conference captain and tackle.

**CAPTAIN-ELECT SALYER**. This sorrel-topped boy from Lexington was the outstanding halfback of the Conference, both defensive and offensive. Salyer has a terrific drive and could plunge through the opposition. He was at his best in the Central and Jewell games.

**PATTERSON**. End, on the Kansas City Star All-Conference team. A wing-man of unusual ability, a good punter, a dangerous ground-gainer from punt formation. He can always worm through the opposing interference and bring down the ball-runner.

**HAGGARD**. A fullback that was always good for first down. His thirty-nine-yard run against the Blue Jays was the feat of the season. As a defensive man, he always met the opponent on the line of scrimmage. On the offense, he was a terrific line-smasher.

**RIOETH**. One of the best defensive stars in the state. He could always take care of his territory and down his man for a loss. He was also a good offensive man, running interference for the backs.

Page 60



RAYMOND CASSIDAY, Tackle  
VOLNEY ASHFORD, Quarter  
WINFRED MILLER, End

## The 1927 Season

THE season opened with Wentworth Military Academy at Lexington, where, in a sea of mud, the Cadets were defeated 12 to 0.

The boys from Culver-Stockton were our visitors the next week. The "Big Blue Team" from Canton put up a game fight and the first half ended 7 to 7. Our offense began to function early in the second half and scored three touchdowns before the final whistle blew.

The game of the next week with Missouri Wesleyan was cancelled due to the death of one of the Wesleyan faculty. Just as the team was preparing to leave for Cameron word was received that the game would not be played and although the Wesleyan coach offered to forfeit the game, Coach Godfriaux refused to accept it that way and the game was cancelled.



Page 61



ROBERT VAN WINKLE, *Half*  
 PATRICK PHELAN, *Center*  
 GEORGE BROCK, *Tackle*



Central Wesleyan had showed up well against Westminster and opposed the Vikings on our field the next week. The weight and experience of the Vikings told in the second half and enabled us to run up a 33 to 6 score. The boys from Warrenton had scored in the first half on a fumble and as yet no team had scored a touchdown while the Vikings were on the defensive.

Tarkio came near putting a crimp in our championship aspirations and this was one of the hardest fought contests of the season. The "Tarks" were never able to carry the ball any distance, but were able to hold the Vikings back when they were pushed back to the shadow of their own goal posts. However, Ashford broke away to return a punt forty yards for the only score of the game late in the fourth quarter.

And then came the annual Homecoming Day battle with Jewell and a great 20 to 15 victory for Valley. The Vikings with their offense functioning perfectly, were able to



KENNETH CONRAD, *Tackle*  
 LONNIE MOTTSHEARD, *End*  
 CLIFTON WILCOX, *Quarter*



score three touchdowns on the "Big Red Team" from Liberty—a team which had an uncrossed goal line until this day. Jewell started with a rush and scored in the first two minutes of play, when one of Patterson's punts went out of bounds on his own eight-yard line. Then followed an exchange of punts, the Vikings took the ball in midfield and marched over for a counter. The Viking line ripped big holes in the Big Red line and Haggard, Salyer and Van Winkle smashed through for good gains. Both teams scored again in the second quarter, the half ending 14 to 13. Another touchdown in the fourth quarter gave Valley a lead which she held to the end. We do not recall a more sensational or harder fought game on the Valley gridiron.

The next game with Westminster was just as promising and a big crowd of rooters followed the team to Westminster to see the Blue Jays beaten 21 to 0. Westminster had played Washington U. to a 6 to 6 tie and



LESTER ROBB, End  
 VIRGIL BLOSSOM, Center  
 PRESTON AMOS, Guard



held the strong College of Emporia to a lone touchdown, so was conceded to have an edge in this tilt. The going was hard in the first half, which ended 0 to 0, but in the second half the Vikings rushed over the three touchdowns and the Blue Jays had been trounced 21 to 0. Haggard squirmed and twisted his way 39 yards through a broken field to furnish one of the thrilling plays of the game.

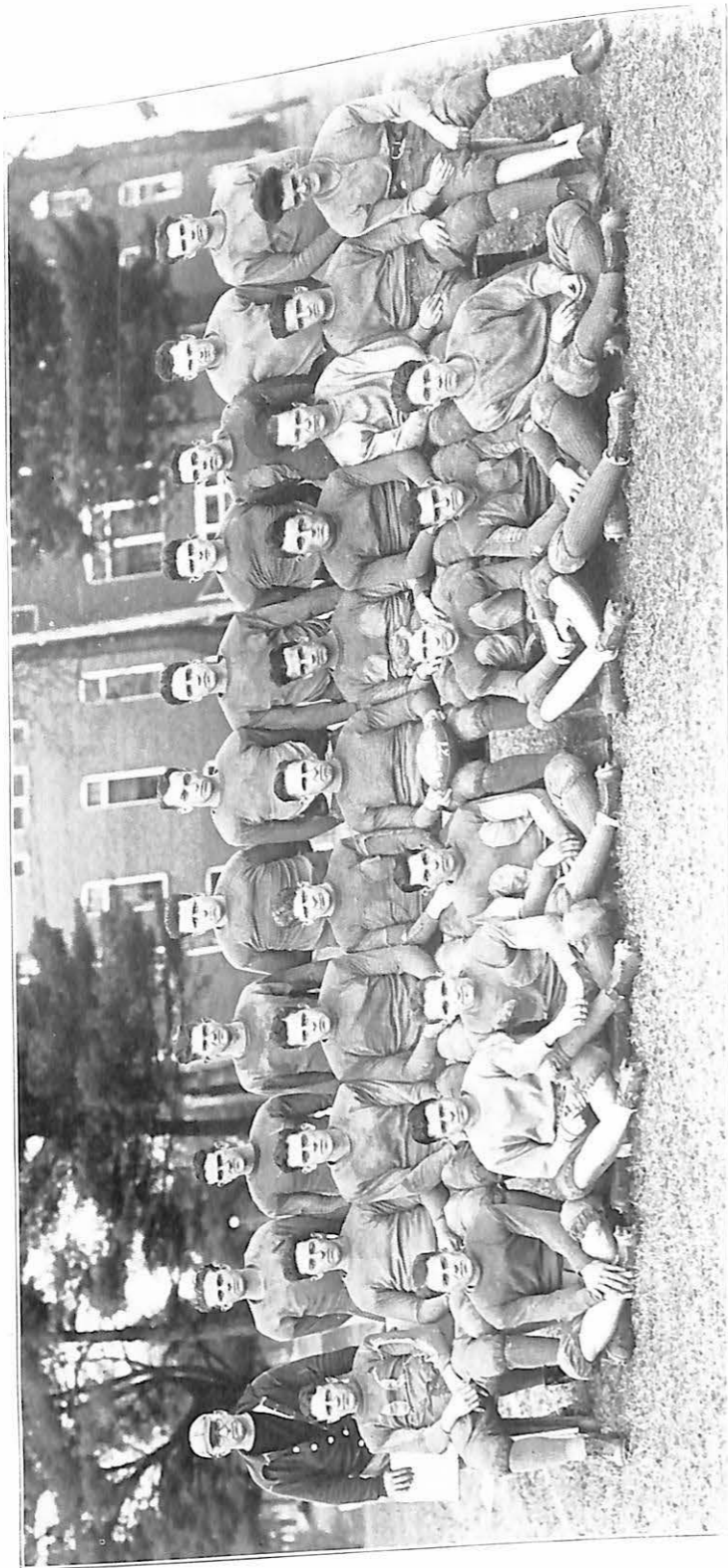
On Thanksgiving Day four thousand fans witnessed the conflict between the undefeated Central Eagles and Missouri Valley Vikings. Making 17 first downs to Central's 5 and gaining 295 yards from scrimmage to Central's 90, the Vikings easily deserved their 20 to 12 triumph. The Eagles were outplayed throughout the game and Van Winkle raced around end to score early in the game. Haggard scored on a line play in the third quarter and near the close of the game Salyer smashed his way 20 yards for the final score. Gray of



EUGENE BRASHER, Guard  
 MARK HOLCOMB, Fullback  
 ORVILLE WRIGHT, Guard



Central made a thrilling 95-yard return of a kick-off, and scored another touchdown on a 40-yard pass in the last quarter. Aside from these two plays the Viking line upset the charges of the Central backs and often threw them for losses. Every Viking starred that day, and especially effective was the line's play, both on offense and defense. The team and squad deserves the credit for our all-victorious record and the highest possible achievement—the winning of the championship.



UNDEFEATED "VIKING" TEAM OF 1927

Standing, left to right—COACH GODERIAUX, HESS, WRIGHT, FISCHER, BLOSSOM, RIOTH, BROCK, FIFE, HOLCOMB, HUME, SCHMIDT  
 Center row—PATTERSON, AMOS, CONRAD, HAGGARD, SALYER, HUTCHERSON (Captain), VANWINKLE, CASSIDY, MILLER, BRASHER, POOLE  
 Front row—ROBB, FERGUSON, KRIECKHAUS, WILCOX, STERRETT, ASHFORD, PHELAN

## Football Scores, 1927

Wentworth.....	0	Vikings.....	12
Culver-Stockton.....	7	Vikings.....	28
Central Wesleyan.....	6	Vikings.....	33
Tarkio.....	0	Vikings.....	7
William Jewell.....	15	Vikings.....	20
Westminster.....	0	Vikings.....	21
Central.....	12	Vikings.....	20
Total.....	40	Total.....	141

### INTERESTING NOTES OF THE SEASON

Vikings scored 141 points, opponents 40.

Vikings made 83 first downs, opponents 20, or an average of 11 first downs to a game for Vikings, three for opponents.

Vikings made 1,393 yards from scrimmage, opponents 335.

At no time did the opponents make more than two successive first downs.

On none of the six touchdowns scored against us did the opponents carry the ball more than 18 yards from scrimmage. Of the six conference schools played, at least four of them have much larger student bodies than Valley.

During the entire season, only three men had to leave the game because of injuries.

### LETTERMEN OF 1927

Quarterbacks: ASHFORD, WILCOX

Halfbacks: SALYER, VANWINKLE

Fullback: HAGGARD

Ends: PATTERSON, MILLER, MOTTESHEARD, ROBB

Tackles: HUTCHERSON, BROCK, CASSIDY

Guards: AMOS, RIOTH, CONRAD

Centers: PHELAN, BLOSSOM

## Championships

CHAMPIONSHIPS are desirable and inspiring, so we at Missouri Valley College naturally feel elated when the Goddess of Victory smiles beneficently on us. Our football team of 1927 was undefeated, winning every game. Our squad was necessarily small for we are not a college with a large enrollment.

Two things must be said of the men of the team. First, their devotedness; no smoking. No irregular eating or sleeping. These things were noticed by all of us. For these reasons, they were hard and physically fit, and, therefore, morally strong and morally hard to beat; and morally hard to beat means hard to beat. The second their unity. There was no crabbing during scrimmage or afterwards; each man was for the rest; each was for stopping the opponents in their tracks; each was for advancing his teammate carrying the ball. They were a rushing, smashing bunch.

Lastly, the student body and the townspeople gave no half-hearted support. The loyalty of these two groups was easily seen. The team felt it and was thrilled by it.

Given a captain like Hutcherson, in whom every man had implicit confidence; a squad keeping training rules and consequently physically fit, well coached and so mentally fit; inspired by the loyalty and faith of their fellows; confident in their own personal honesty and sacrifice, and, therefore, spiritually fit; assuredly you have an aggregation hard to beat. Such was ours in 1927, and we won.

—W. I. F.

## Basket Ball

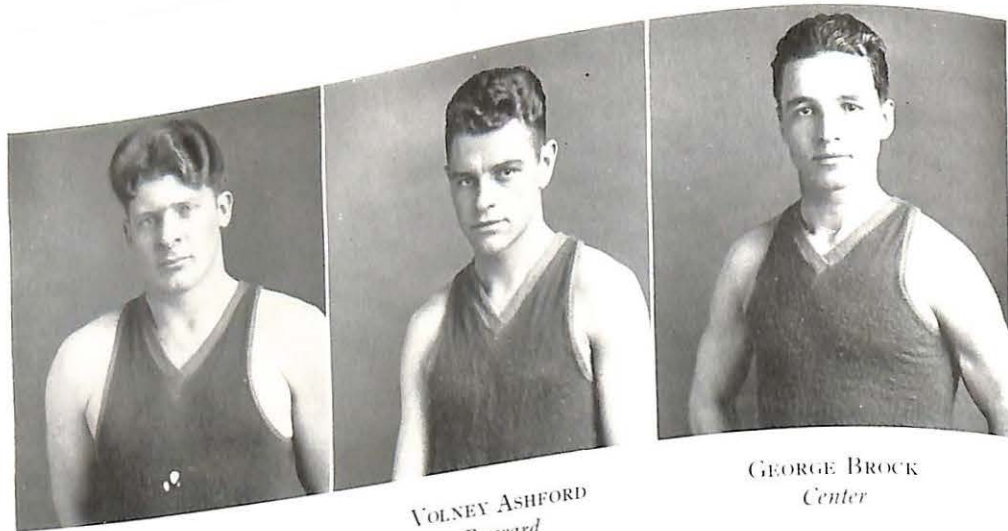


CAPTAIN LOUIS FETTE  
*Center*

MILESS HAGGARD  
*Guard*

CAPTAIN FETTE, although getting a late start, he gave a good account of himself. The loss of his services to our team of 1929 will be greatly felt.

Haggard is only a Sophomore, having two more years to show Valley what he can do for her. He was chosen as guard on the second all-conference team this year. Haggard was respected by every team on the Viking schedule, and should be a constant source of worry to forwards next season.



HORACE SALYER  
*Guard*

VOLNEY ASHFORD  
*Forward*

GEORGE BROCK  
*Center*

Salyer was a member of the squad last year. This year he proved to be fine, and his work, both offensive and defensive, was a revelation to those who saw him play. Red will be back to make the Vikings a contender for top honors next year.

Ashford came to college last fall with a fine high school record as an athlete. He has proven that all reports concerning him were true. He is a crack shot and played a good floor game in addition.

Brock, late in breaking into the Viking line-up, became a valuable man to the Vikings. He will be back next year to give an account for himself.



ADRIAN HESS  
*Forward*

FLOYD TETERS  
*Forward*

CECIL PATTERSON  
*Forward*

Hess was a scrapper, always following the ball. He was a good shot and a good floorman. He will be available for next year's squad.

Teters, a man from the '26 squad, was back in school last fall. He made his letter before the close of the first semester. He was the fastest man on the squad.

Patterson proved his worth to the Vikings again this year. His specialty was one-handed shots which he "hit" with satisfying regularity.

## Baseball

THE baseball squad of 1927 got off to a rather late start; nevertheless, this proved to be no great disadvantage to the Vikings. Coach Godfriaux was unusually fortunate in having so much good undergraduate material in which he was not disappointed as the season progressed.

The team played twelve games, winning nine and losing three. Out of four games played with Central College, Missouri Valley won three. These three games won by Missouri Valley were all won by large scores. Fette, Salyer and Haggard pitched, each winning his game. The fourth game was a defeat and the loss of the championship to Missouri Valley.

The team made a week's trip through Missouri and eastern Kansas, defeating Rockhurst, Baker, and losing to St. Benedict. A game with Haskell was cancelled on account of rain. Haggard pitched a good game against Rockhurst, winning, 6-4. Fette pitched against Baker, allowing only three hits. Missouri Valley winning, 9-0. Salyer pitched against St. Benedict, allowing only three hits but losing on account of the team's errors, 4-2.

Against Westminster, Missouri Valley broke even, losing one and winning one. The score of the first game was 5-4; the second, 10-0, in favor of Valley. Fette pitched a wonderful game for Missouri Valley in the second game.

Against Haskell, Missouri Valley won, 13-4. Missouri Valley far outclassed the Indians. Baker, at home; Missouri Valley again defeated Baker by a big score. St. Benedicts at Marshall; Missouri Valley won, 7-3.

Members of the squad were:

*Catchers:* LOCKRIDGE and BLOSSOM

*Outfielders:* BROWN, BURKE, HAGGARD, PALMER

*Infielders:* HESS, PATTERSON, DAUGHERTY, FRERKING  
and SALYER

*Pitchers:* FETTE, HAGGARD, and SALYER

## Girls' Athletics



MISS GERTRUDE SMITH  
Director Girls' Athletics

THE object of the Physical Education Department at Missouri Valley College is to promote an interest in athletics and in healthful competition, to further the welfare of the school and of the individual by maintaining the highest ideals for healthful, wholesome womanhood, for sportsmanship, good comradeship and fair play. An endeavor is made to have as many as possible participate in all sports rather than give special attention to a few who have unusual ability.

### September—

Posture Test  
Volley Ball Practice  
Fundamentals of Physical Education  
Tennis

### October—

Intramural Volley Ball Games  
Three Volley Ball Games with H. S.  
Social Dancing Parties

### November—

Intramural Basket Ball Games  
Three Basket Ball Games with H. S.

### December—

Second and Third Badge Test Work  
Physical Examinations

*January—*  
Folk Dancing

*February—*  
State Letter Work  
Folk Dancing  
Indoor Basket Ball Practice

*March—*  
Hiking Teams Organized  
Intramural Basket Ball Games  
Scout and Indian Chase

*April—*  
Basket Ball Games with High School  
Hiking  
Folk Dancing  
Tennis

*May—*  
Tennis Tournament  
Presentation of State Letters  
Presentation of College Letters

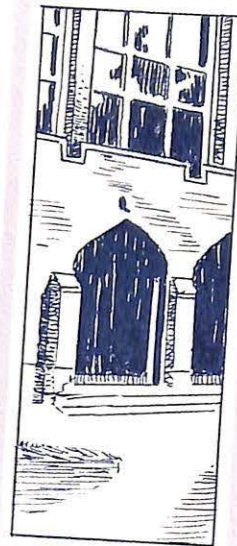
*Captains of Teams—*  
Volley Ball—ANNA CORRINE BROWN  
Basket Ball—EILEEN ROBERTSON  
Baseball—EDNA COX

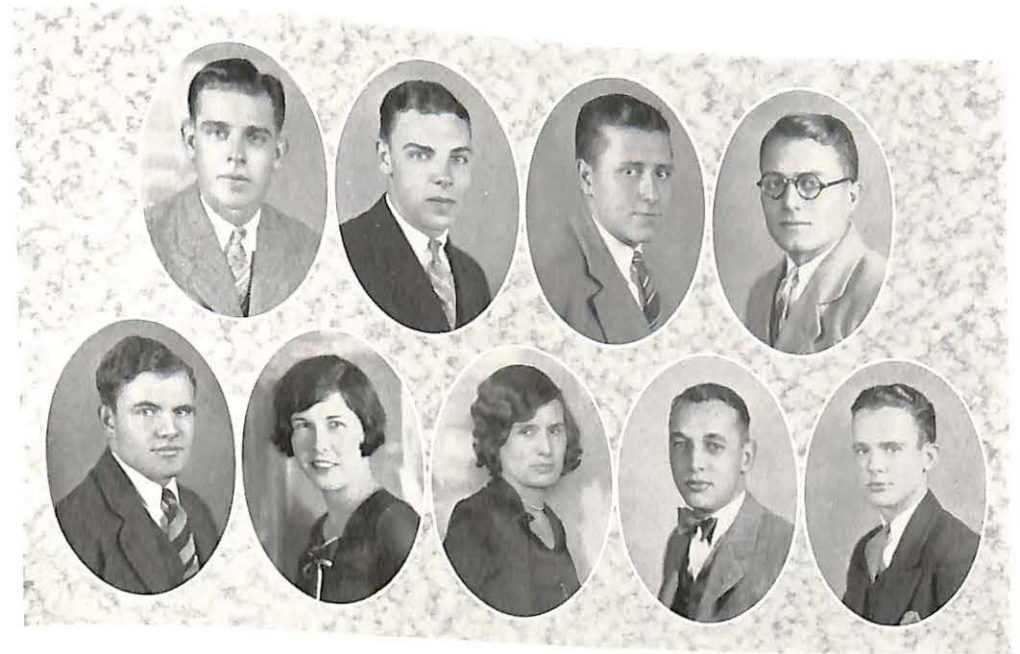


*The Girls' M Club*

Page 74

# ACTIVITIES





## Student Government and Its Purpose

### MEMBERSHIP OF STUDENT SENATE

The Student Senate shall be composed of ten members: Seniors, three; Juniors, three; Sophomores, two; Freshmen, two.

The President of the Student Senate must be chosen from the Senate membership, and also acts as President of the student body.

Purposes of the Student Senate are outlined in the preamble of the Constitution.

### THE PREAMBLE

We, the students of Missouri Valley College, in order to establish a definite system of student organization; an adequate control of student organizations, by the students, for the students; foster closer relationships between students and faculty; to endeavor to maintain the highest standard of manners and morals which is possible.

*Senior Members*—RAY HARRE, DOROTHY DOANE, and LESTER ROBB

*Junior Members*—OLIVIA WINCHELL, MARK HOLCOMB, and KENNETH CONRAD

*Sophomore Members*—EARL RIOTH and VIRGIL BLOSSOM

*Freshman Members*—SALLY MARGARET EVRARD, and DAVID GORE

## The 1928 Sabiduria Staff



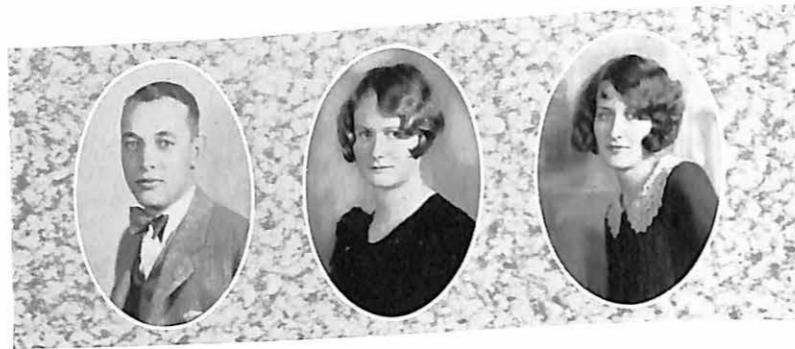
JOE PRICE FRERKING  
*Editor-in-Chief*

PATRICIA LARKIN  
MARK HOLCOMB  
RALPH YANCEY  
MARY DOANE  
MARGARET STEVENSON  
ELIZABETH GILLETTE  
CORINE BACON

*Artist*  
*Athletic Editor*  
*Advertising Manager*  
*Photographer*  
*Senior Editor*  
*Literary Editor*  
*Assistant Literary Editor*

THE production of the Sabiduria is not an individualistic enterprise, either of the staff or the editor. It is true that upon them falls the greatest task, but without the co-operation of the entire student body, all we have attempted to achieve in this volume would have been a failure.

The staff for the 1928 Sabiduria has endeavored to give you a real interest in this book. Throughout the entire book, we have attempted to present its contents in such a way that it will not only adequately mirror student life but will also breathe the essence of Missouri Valley, its spirit, its traditions, and its hopes.



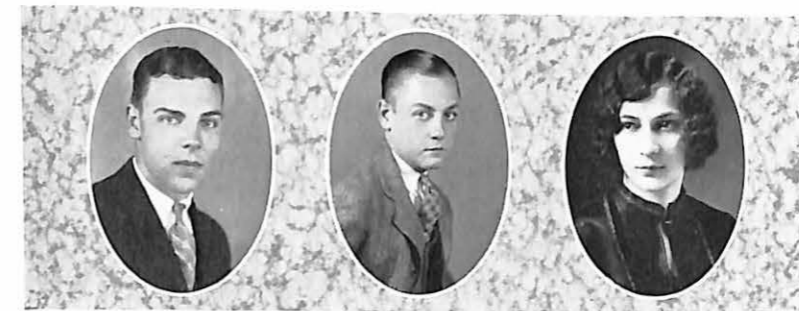
## The 1928 Sabiduria



RAY HARRE  
*Business Manager*

FOR every word said in its pages, there is a thousand left unsaid about Missouri Valley College activities and events during the past year. For every picture there are a hundred more that would bring back a pleasant personality or incident in the years ahead. The 1928 Sabiduria is another exhibit in the annual struggle of a staff against time, space, and inexperience.

The staff of the 1928 Sabiduria wishes to thank all those who, in any way, directly or indirectly, helped to make possible the Sabiduria of 1928.





The DELTA

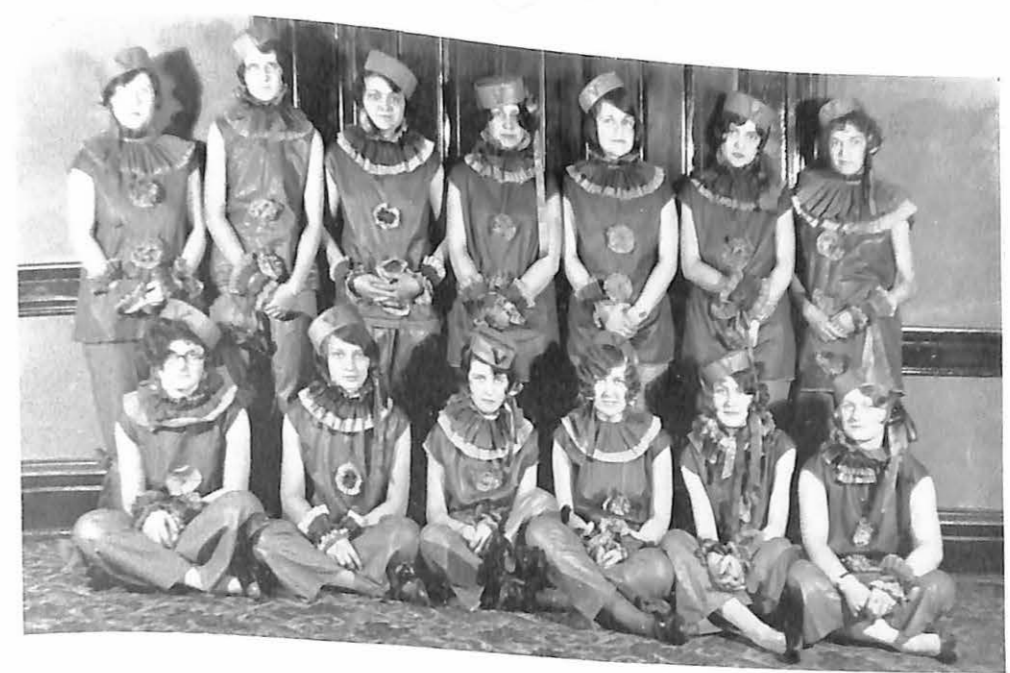
DORA LEE MORRISON  
 C. J. WENZEL  
 MARJORIE SWISHER  
 KATHLEEN HENSHAW  
 WINONA MERRITT  
 KENNETH MORROW  
 VIRGIL BLOSSOM  
 WILLARD PAGE  
 PROF. M. C. HAYS

*Editor-in-Chief*  
*Business Manager*  
*Advertising Manager*  
*Literary Editor*  
*News Editor*  
*News Editor*  
*Athletic Editor*  
*Humor Editor*  
*Faculty Advisor*

THE DELTA, the student paper of Missouri Valley College, is published the first Thursday of every month, by the Delta Staff. It is financed by student subscriptions and by the sale of advertising space to the merchants of Marshall.

The Delta is the medium through which the activities of the student body come to light. It is the purpose of the Staff to edit an interesting paper, comparable to other college papers in its interest and journalistic values. In every issue, a campus view, or a picture of a student group is found and the Staff feels that this factor has increased the appearance of the paper as well as the appreciation to the student body.

A supplement to "The Delta," called "The Yellow Fever," is published with the May issue.



The Valkyr Club

MISS DOROTHY HYLAND *President*  
 MISS EMILY MILES *Secretary-Treasurer*

IN 1923, a group of Missouri Valley girls banded themselves together under the name of Valleyites. The object of the club was to furnish pep to the football team. They were very successful, for that year our team carried off the championship. The next year, they conceived the happy idea of formally organizing and calling themselves Valkyrs, or women Vikings. The organization was limited to twenty members and pledges were made to support the club.

Since then, this club has been one of the most active on the campus. They are busiest during the football season when they put on stunts in chapel, between halves at the game, decorate goal posts and make themselves useful in general.

The members of the organization are: Frances Lu Fletcher, Emily Miles, Corine Bacon, Dorothy Hyland, Jessamine Tarver, Patricia Larkin, Margaret Stevenson, Dora Lee Morrison, Olivia Winchell, Margaret Robinson, Marjorie Swisher, Kathryn Johnson, Naomi Harlan, Zelma Zahn, Dorothy Doane, Mary Doane, Lucille LaRue, Willa Jose, Georgia Mae Terrell.



## The Orchestra

THE Missouri Valley College Orchestra, under the leadership of Prof. A. T. Vawter, achieves more success each year. The splendid quality of tone and the uniform phrasing of the string section gives evidence of the excellent work, alone in the violin department. Students in the violin department are especially urged to play in the orchestra. The benefits derived from this drill in orchestra playing are obvious. The orchestra makes numerous appearances at chapel and at student concerts during the year.

### PERSONNEL

PROF. ARTHUR T. VAWTER	First Violin and Director
MISS DOROTHY DOANE	Accompanist
MARY ELIZABETH PERRY	Violin
MARY DOANE	Violin
ELEANOR THOMPSON	Violin
ADOLPHUS BORBERG	Violin
ROBERT THOMPSON	Violin
JOHN CRISP	Violin
MISS VON TOBLE	Violin
MARQUIS MORGEY	Trumpet
ROBERT BROWN	Clarinet
HELEN BIERBAUM	Clarinet
ESTELLE PALMER	Flute
J. W. BRYANT	Bass
DAVID GORE	Drums

Page 80

The SABIDVRIA



Top row—DORA LEE MORRISON, MERIAM RENNISON, FLORENCE YOWELL, KATHRYN JOHNSON, ERMA SOBOLEWSKI, MARY PALMER, FRANCES LU FLETCHER  
 Center row—HELEN MAHR, NORMA PUTNAM, MARGARET STEVENSON, PATRICIA LARKIN, PROF. FICHTHORN, NADEEN HOLLINGSWORTH, CORINE BACON, MARY ELIZABETH PERRY, JESSAMINE TARVER  
 Bottom row—NELLE HOWELL, GLADYS SIMMONS, KATHLEEN HENSHAW, MARIE MCINTOSH, VIRGINIA SCOTT, ELEANOR AULT, CLARA LINBERG

## The Girls' Glee Club

CLAUDE L. FICHTHORN	Director
PATRICIA HELEN LARKIN	Assistant Director
NORMA PUTNAM	Business Manager
CORINE BACON	Treasurer
JESSAMINE TARVER	Accompanist
MARY PALMER	Property Manager

THE Club of 1927-28 is an organization which has attained a high degree of perfection. Each year finds its members eager to better the work of the year before. During the first semester about half the young women of the student body composed the girls' choral club. At the beginning of the second semester, the Glee Club was chosen.

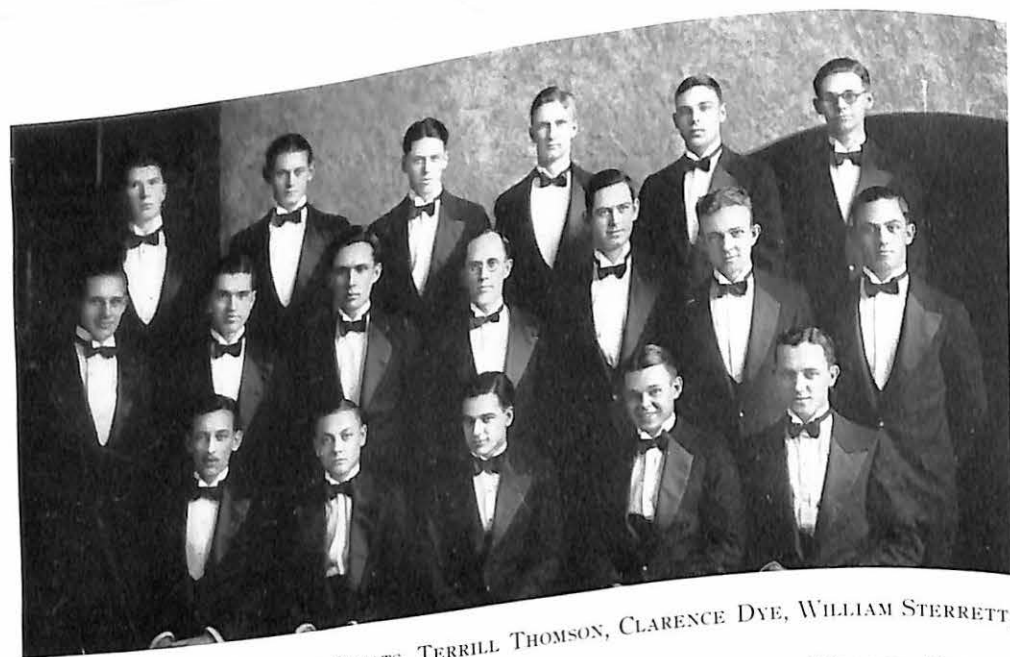
The program this year consisted of ensemble numbers, quartette numbers, vocal solos by Kathryn Johnson, violin solos by Mary Elizabeth Perry, readings by Corine Bacon, "Miss Wyoming" stunt by Jessamine Tarver and a play, "Bread, Butter and Romance."

The Club made a trip to Southern Missouri, singing in Kansas City, Butler, Golden City, Joplin, Carthage, Neosho, Greenfield and in Springfield. The Club also sang in several towns near Marshall.

The trips were very successful and made many friends for the College. On the trips the girls were chaperoned by Mrs. Ivah M. Barrett.

Page 81

The SABIDVRIA



Top row, left to right—ALBERT STAATS, TERRILL THOMSON, CLARENCE DYE, WILLIAM STERRETT, MARK HOLCOMB, GLENWOOD DANIELS  
 Second row—RALPH THOMAS, ROBERT THOMPSON, ADOLPHUS BORBERG, WILLARD COWAN, JOHN CRISP, CHARLES BACON, ROBERT GIBSON  
 Bottom row—JACK PATTERSON, RALPH YANCEY, GEORGE FISHER, NOEL FERGUSON, TRUMAN HALL

## Men's Glee Club

THE men's club of 1927-28 did its share in contributing toward the success of our school. It has been one of the peppiest organizations on the campus and its members very loyal.

The program offered by the club was unusual in its great variety. The ensemble numbers were fine, due to the very competent directorship of Mr. George Fisher. The club boasted the best quartet it has had for years. The Ham Trio, composed of Messrs. Robert Thompson, Willard Cowan, and Mark Holcomb, brought down the house everywhere with their "blue" harmony numbers. Messrs. Robert Thompson and Adolphus Borberg were responsible for a popular violin duet. The club also had two readers this year. Mr. Charles Bacon gave "The Night Run of the Overland," a dramatic reading, and Mr. Willard Cowan kept his audiences in an uproar with his comic selections.

The club was fortunate in having Mr. Cowan as a member. He has been with the Park College Glee Club as well as the Glee Club of Ann Arbor, Michigan. He was the soloist for Missouri Valley this year.

Mr. Ralph Yancey, as leading lady; Truman Hall, as her husband, and Mr. Clarence Dye, as the father-in-law, presented well a little comedy skit called "Getting Rid of Father."

The club made a very successful tour through the eastern part of the state, making New Franklin, LaPlata, Brookfield, Union, Marceline, Louisiana, Clarksville, Bowling Green, and Webster Groves. They were well received everywhere and made many friends for the college.

Charles Bacon was the business manager and Noel Ferguson, treasurer.

Page 82



THE purpose of the Dramatic Arts Club is to bring better plays before the student body and the people of Marshall. The membership of the club is limited to sixty-five.

In this, the fifth year of the club, under the direction of Professor S. L. Greenwood, Oscar Wilde's comedy, "The Importance of Being Earnest," was given as the first play of the year, in January. The leads were taken by Charles Bacon, Dalene Page, Mark Holcomb, and Sally Margaret Evrad.

Another major play, "Trelawny of the Wells," is to be given in early April.

Many minor plays were given throughout the year and new talent for the major plays was discovered in them.

The executive committee, along with the members, plan to give its last major play commencement week.

Each year the Dramatic Arts Club has two social functions. Early in October, Mr. George Fisher was the host of the club at the Marshall Country Club. A banquet will be given at which the officers for the new year will be installed.

### EXECUTIVE COMMITTEE

DOROTHY DOANE	President
MARK HOLCOMB	Vice-President
MARGARET STEVENSON	Secretary
DOROTHY HYLAND	Treasurer
PATRICIA LARKIN	Publicity
RALPH THOMAS	Plays
LESTER ROBB	Membership

Page 83

# Y. W. C. A.

## OFFICERS



MISS NORMA PUTNAM  
 MISS NAOMI HARLAN  
 MISS GLADYS GOLLONG  
 MISS OLIVIA WINCHELL  
 MISS RUTH HUYETT  
 MISS CORINE BACON  
 MISS ZELMA ZAHN  
 MISS DOROTHY DOANE  
 MISS CASSIE SCHANZ  
 MISS MARJORIE SWISHER  
 MISS JESSAMINE TARVER  
 MISS MARY DOANE

President  
 Vice-President  
 Secretary  
 Treasurer  
 Finance  
 Membership  
 Undergraduate  
 Social  
 Music  
 Missionary  
 Usher  
 Poster

THE Young Women's Christian Association is organized to promote religious and social life among the college girls. In a social way, the Association is sponsored for such features of college life as the occasional receptions given during the year, and the May-day festival, the campus plays, and other attractions. The annual banquet is held in the spring, on which occasion the newly-elected officers for the ensuing year are established. The girls hold brief devotional meetings once a week. The past year has been marked by co-operation, accomplishment and enthusiasm. At various times men and women of exceptional ability and spiritual inspiration come to renew and enliven the whole Association by their presence and Christian fellowship.



# Y. M. C. A.

## THE CABINET

RALPH THOMAS  
 WILLARD PAGE  
 ELMER P. LEWIS  
 WILLIAM STERRETT  
 JAMES STAGE  
 REUBEN HUME  
 MARK HOLCOMB

President  
 Vice-President  
 Secretary  
 Treasurer  
 Publicity  
 Usher  
 Social



THE Y. M. C. A. is largely responsible for religious development among the men students at the college. Weekly devotional exercises were held every Thursday morning in the Y. M. C. A. room.

The past year, Dr. Ralph M. Davis, pastor of the Hyde Park Presbyterian Church of Chicago, had charge of the Vocational Week services. Dr. Davis is an alumnus of Missouri Valley and, as an evidence of his popularity, he has twice in the last four years had charge of Vocational Week. The time was devoted to individual conferences and public discussions touching what is most vital and important in the life of every student.







## Why These Advertisements?

Our advertisers are in sympathy with the plan to make Missouri Valley a larger and better school. A greater Missouri Valley means a greater Marshall, and this is why the two should work together for the good of both. A larger enrollment means more business, and this in turn means more advertising in the Annual, and we are looking at it only from this standpoint now. It works both ways.

But there must be other reasons for these ads, as there is usually a reason for everything. So we asked a business man why he advertised in the Sabiduria, and this is what he gave us:

1. We are interested in Missouri Valley because it means something to Marshall.
2. We are proud of our products and want to let you know about them.
3. We remember and appreciate your patronage of the past and therefore can afford to advertise.

And now it is our opportunity to thank all those who have co-operated in the production of this, the 1928 Sabiduria.

THE STAFF.

# Missouri Valley College

MARSHALL, MO.

ACCREDITED — RESTRICTED  
*A Four-Year Cultural College*

OFFERS cultural and pre-vocational courses, preparing for teaching, law, medicine, ministry, engineering and business, music and home economics.

Student activities—debate, athletics, dramatics, glee clubs, etc. Tuition, fees and all costs reasonable.



GEORGE H. MACK  
*President*

Page 92

The SABIDVRIA

CLEANERS and TAILORS

GLASS BROS.

WEST SIDE SQUARE

PHONE 105



*"We Clean While Others  
Try"*

Newton & Company

LOANS, ABSTRACTS  
and  
INSURANCE



PHONE 138

WEST SIDE SQUARE  
MARSHALL MISSOURI

## YOUR ECONOMIC PROBLEM

1. To live.
2. To get ahead.
3. To prepare for a family.
4. To pay your way out.
5. To create a surplus or sinking fund.
6. To provide against income interruption.
7. To prepare for old age.
8. To cancel obligations to parents.

*Complete Life's Plans Through Life Insurance*

### Lockridge & Huston

FARMERS SAVINGS BANK BUILDING, ROOM 216      MARSHALL, MO.

Page 93

The SABIDVRIA

## *Candyland*

FANCY ICE CREAMS,  
SHERBETS, HOT AND  
COLD DRINKS and  
SANDWICHES

We appreciate the  
College's patronage

*"The Best Confectionery in  
the City"*

PHONE 131

## *The* **FISHER Book Store**

BOOKS and STATIONERY  
SCHOOL BOOKS—FRAM-  
ING and PICTURES  
SCHOOL SUPPLIES



*We Appreciate Your  
Patronage*

SHOES

CLOTHING

## **Lloyd & Tipping**

*"ALWAYS EARLY WITH  
THE LATEST"*

Page 94

*The SABIDVRIA*

*When You Need Anything in*

GROCERIES or  
QUEENSWARE

Give Us a Trial



## **E. R. LATIMER**

*Groceries and  
Queensware*

NORTH SIDE SQUARE PHONES 11-12

## **TONY DAVIS**

*The TAILOR*

If your clothes are  
not becoming to  
you, you'd better  
be coming to me.



*Second Floor*

EAST SIDE SQUARE  
MARSHALL MISSOURI

WE ARE HERE TO SERVE YOU

## **RED CROSS PHARMACY**

G. C. WATERS

DRUGS, CANDY, SODA WATER, KODAKS  
REXALL, WHITMAN, KODAK AGENTS



Page 95

*The SABIDVRIA*

KOLSTER RADIO

ELECTRICAL  
APPLIANCES

WIRING *and*  
REPAIRING



Star Electric Shop

PHONE 146  
MARSHALL, MISSOURI

WALL PAPER  
PAINTS

BRUSHES  
GLASS

*J. P. Johnson*

RUGS  
DRAPERIES

LINOLEUM  
WINDOW SHADES

# Marshall Lumber Company

EVERYTHING  
*to build anything*



Phone 142

Page 96

The SABIDURIA

HUGH STEPHENS  
KRAFT BUILT

### Acknowledged Leadership

HERE IS one big reason why THE HUGH STEPHENS PRESS is America's acknowledged leader in fine college annual production:

The printing and binding of a *Kraft Built* School Annual is the work of one able organization, under one roof.

Typography, Presswork, Binding and Cover Making—the responsibility of one group of experienced workmen.

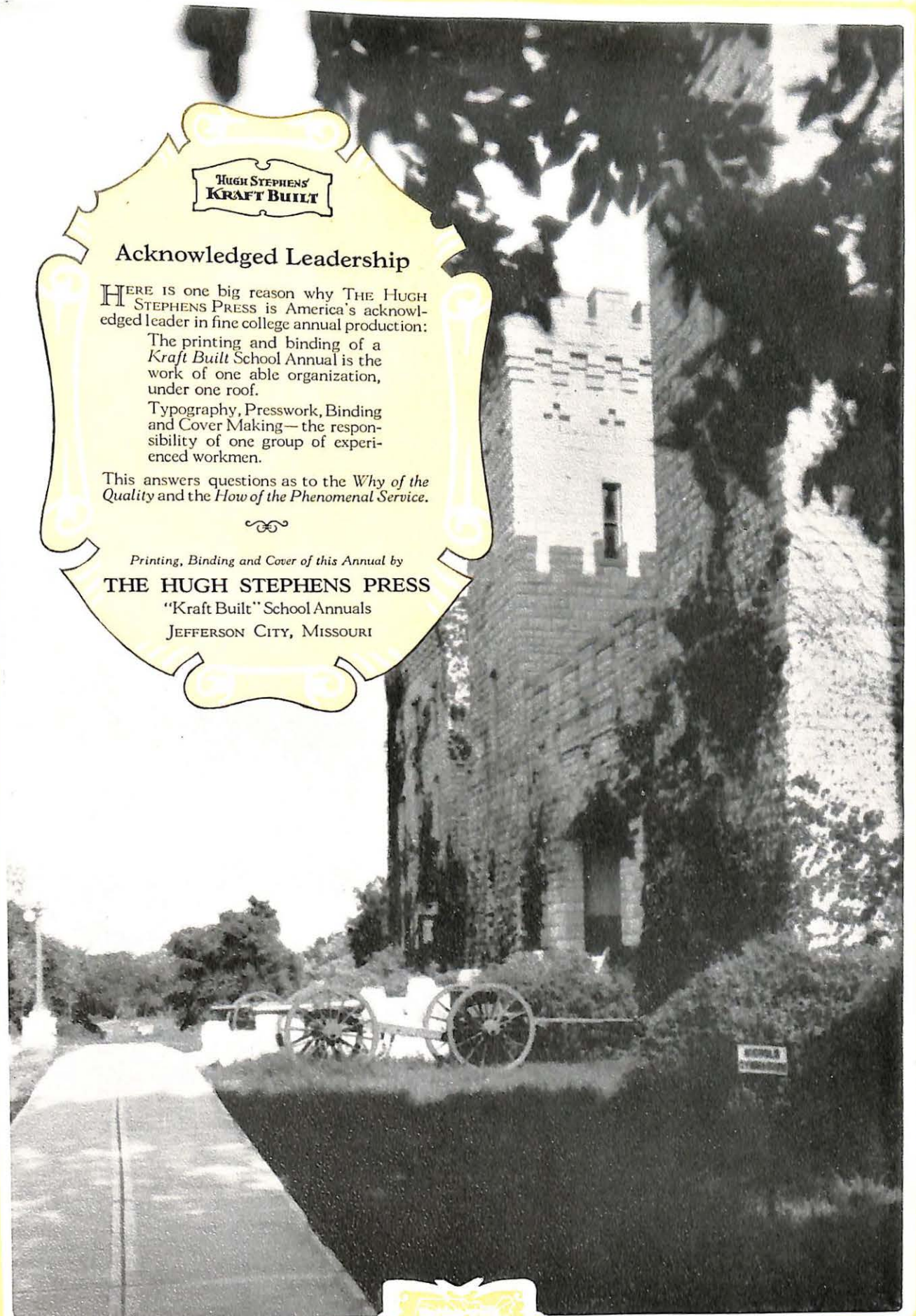
This answers questions as to the *Why of the Quality and the How of the Phenomenal Service.*

*Printing, Binding and Cover of this Annual by*

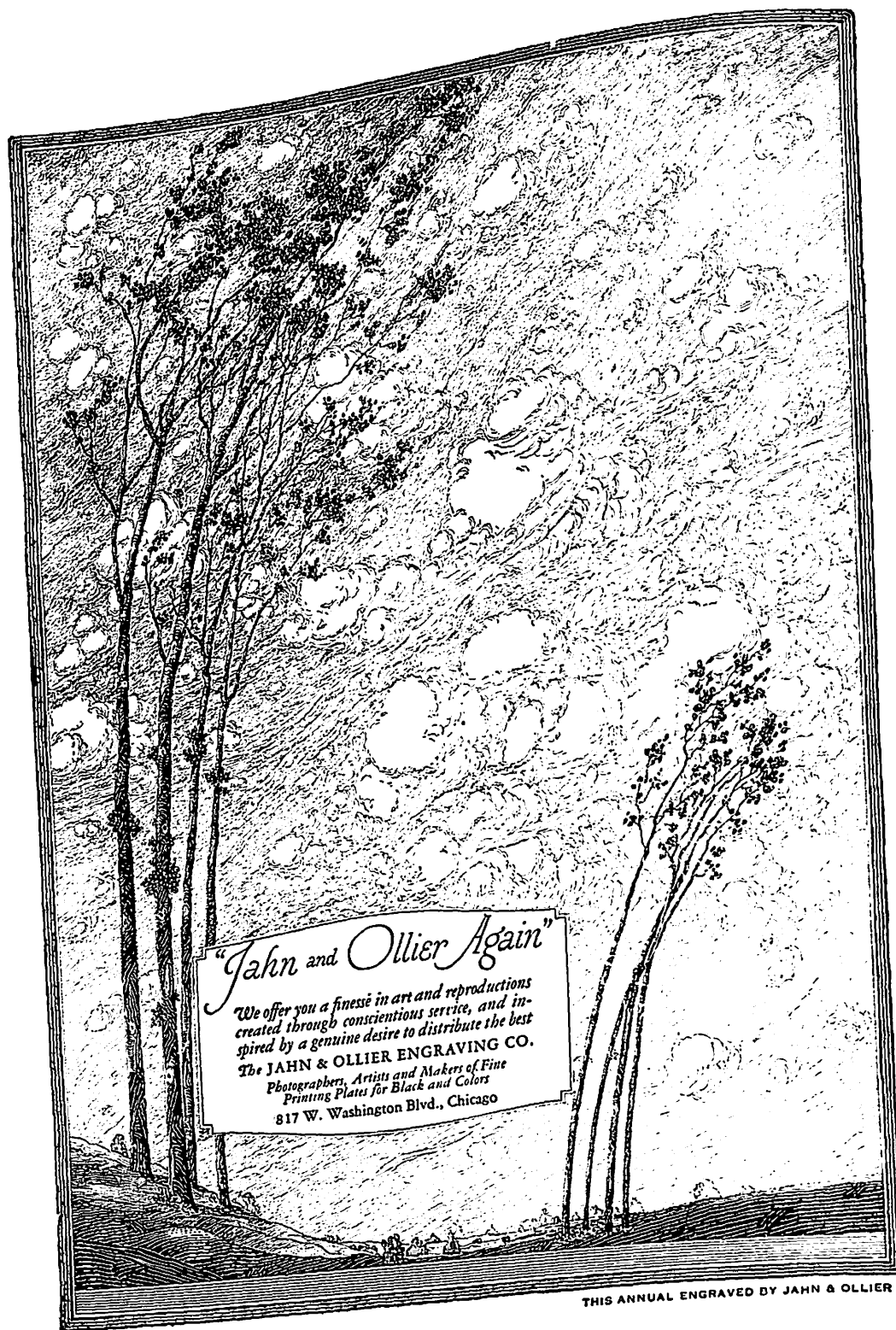
**THE HUGH STEPHENS PRESS**

"Kraft Built" School Annuals

JEFFERSON CITY, MISSOURI



Photograph Courtesy 1927 Royal Purple



Daniels Lumber Co.

Everything in the  
BUILDING  
LINE



R. M. PHILLIPS, *Manager*  
PHONE 137

Cliff B. Goodwin

WHOLESALE GROCER  
COMPANY

We Feature Quick Service  
to Retail Dealers

MARSHALL  
PHONE 5  
PHONE 56

SLATER  
PHONE 57

100% for Missouri Valley  
College

MISSOURI VALLEY STORES CO.



MARSHALL'S  
LARGE DEPARTMENT STORE

APPRECIATES YOUR  
PATRONAGE

# La Crosse Lumber Company

Since 1888

We Still Like It



PHONE 7

MARSHALL

MISSOURI

DR. A. C. PUTNAM  
*Homeopathist*

Suite 200, Farmers Savings  
Bank Building

Telephone

OFFICE 448—RES. 527

MARSHALL

MISSOURI

C. D. LYNCH

Representative  
EQUITABLE LIFE OF NEW YORK

*"Let's Underwrite Your Life's  
Objectives"*

MARSHALL BUILDING

## OFFICERS

HARRY C. FRANCISCO  
G. E. C. SHARP  
D. R. HARRISON  
T. L. YANCEY  
H. B. ROBINSON

President  
Vice-President  
Vice-President  
Cashier  
Asst. Cashier

## DIRECTORS

H. C. FRANCISCO  
G. E. C. SHARP  
C. I. DUNCAN

S. W. WILKINSON

F. H. NAYLOR  
C. B. BACON  
A. R. JAMES

# BANK OF SALINE

MARSHALL, MO.

CAPITAL AND SURPLUS, \$125,000.00

WE SOLICIT YOUR BUSINESS

Page 98

The SABIDVRIA

# Marshall Produce Company

MARSHALL, MO.

POULTRY  
EGGS  
BUTTER  
HIDES



*Top Market Prices Always*

# SEARS SIGNS

OUTDOOR  
ADVERTISING

# W. V. TIPPING

ART  
MEMORIALS

BREAK WINTER'S BACKBONE WITH COAL

*We have the best!*

AND SUMMER'S HEAT WITH ICE

*We make it*

# MARSHALL ICE, STORAGE and FUEL COMPANY

PHONE 31

Page 99

The SABIDVRIA

**Wells &  
Durrett**

GROCERIES



SOUTH SIDE SQUARE

PHONE 158

W. L. CARTER, A.B., D.D.S.

*Dentist*

X-RAY

102 Farmers Savings Bank Bldg.

B. E. SHAW

*Dentist*

Orthodontia a Specialty

PHONE 299

BANK OF MARSHALL BUILDING

SUPERIOR FOUNTAIN SERVICE  
SATISFYING LIGHT LUNCHES

*An Excellent Place to Eat-----*



*-----Always Boosting M. U. C.*

THERE IS PRESTIGE

*in*

## JACCARD PRODUCTS

Class stationery . . . Class  
Jewelry . . . We design both,  
creating these exclusive de-  
signs in our own shops and  
guaranteeing their excel-  
lence and distinction.

Correspondence invited

*Samples Submitted*



**Jaccard Jewelry Co.**

1017-19 WALNUT STREET

KANSAS CITY, MISSOURI

# Why Not Have

## A SAVINGS ACCOUNT

To which you add a certain set amount of your income every week or month? It will stand you in good stead some time in the future.

## A CHECKING ACCOUNT

So that you can pay all your bills by check—the safest and most convenient way?

## A SAFE-DEPOSIT BOX

To protect your insurance policies—your will—your securities—your jewelry and other valuables?



# BANK OF MARSHALL

MARSHALL

MISSOURI

Page 104

The SABIDURIA

W. H. Meschede  
*Attorney at Law*

BANK OF SALINE BUILDING

J. Virgil Burroughs

REAL ESTATE  
INSURANCE  
LOANS

FARMERS SAVINGS BANK BUILDING

Missouri  
Ice Cream Co.

*Wholesale  
Manufacturers*

*of*

BUTTER  
ICE CREAM  
AND ICES

MARSHALL

MISSOURI

# QUALITY MEAT MARKET

QUALITY, SERVICE  
*and* PRICE

PHONE 900

Page 105

The SABIDURIA

**VAN DYKE  
& COMPANY**

LOANS  
ABSTRACTS  
INSURANCE

MARSHALL

MISSOURI

**E. M. Wright**

*The Best in Dry  
Goods*

SILK, WOOLEN AND  
COTTON DRESS GOODS,  
GLOVES, HOSIERY,  
BAGS, CURTAIN GOODS,  
FANCY NOVELTIES



EAST SIDE SQUARE

MARSHALL

MISSOURI

**If Your Parents Attended Missouri Valley  
We Know Them**

For thirty-eight years the college students  
have found in this store the three essen-  
tials of profitable shopping—

STYLE—*Right*  
SERVICE—*Courteous*  
QUALITY—*The Highest*

**Rose & Buckner**

Page 108

The SABIDURIA

**John T. Davis**  
Ph. G.

*Everything a First  
Class Drug Store  
Should Have*



SUNSET SIDE OF SQUARE

**Colvert Bros.**

*We Handle*

RED LABEL, OLD  
BEN and PURITY  
COAL, WOOD,  
TILE, CRUSHED  
ROCK and SAND

OFFICE PHONE 89 YARD PHONE 76

**DR. GEORGE T. NUCKLES**

*Osteopathic Physician and Surgeon*

X-RAY and PHYSIO-THERAPY

OFFICE—MARSHALL BUILDING

OFFICE PHONE 351

RESIDENCE PHONE 566

Page 109

The SABIDURIA

*"Continuous Flow System"*

*Boulware*

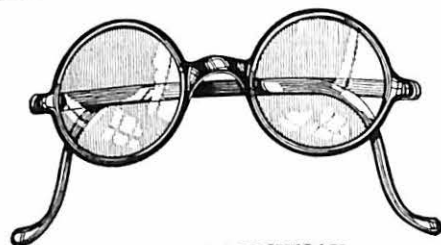
*Quality Cleaners*

PHONE 302

**ROSE SCHRECKLER**

**JEWELER**

West Side Square, MARSHALL, MO.



**W. A. VAWTER**  
*Optometrist*

West Side Square MARSHALL, MO.

**Ewell Bros.**  
GROCERIES, MEATS  
and QUEENSWARE

PHONES 63-64

COMPLIMENTS

*of*

**Homer Frerking**

*"Photographs Live Forever"*

Page 110

The SABIDURIA

**Marshall Floral  
Company**

IMANUEL WITTRUP  
*Manager*

The latest and most up-  
to-date Floral Establish-  
ment in Central Missouri

*Flowers Delivered Fresh  
Anywhere on Earth*

MARSHALL

MISSOURI

**McKay Cafe**

*A Good Place to Eat  
Open All Night*

NORTHWEST CORNER SQUARE

**Miss Emma Vawter**

*Milliner*

LOCATED ON THE BALCONY IN THE  
BELL-FULLER STORE

**Buick and Star Cars**

REAL AUTO SERVICE

**REA GARAGE**

PHONE 45

EXIDE BATTERY SERVICE

Page 111

The SABIDURIA



THE  
WESTERN THEOLOGICAL SEMINARY  
PITTSBURGH, PA.

*A Seminary for College Graduates*

A complete modern theological curriculum, with elective courses leading to degrees of S. T. B. and S. T. M.

Graduate courses of the University of Pittsburgh, leading to degrees of A. M. and Ph. D., are open to properly qualified students of the Seminary.

The City of Pittsburgh offers an unusual field for the study of the problems and work of the modern church. A Department of Religious Education was inaugurated at the beginning of the term, 1922-23. Exceptional library facilities. Seminary library of 40,000 volumes of theological literature. North side branch of Carnegie Library is within five minutes' walk of the dormitory.

Post-graduate fellowship of \$600, providing for a year of study in a European University. Two entrance prizes of \$150 each, awarded on the basis of a competitive examination to college graduates of high rank.

All the public buildings of the Seminary are new. The dormitory is equipped with the latest modern improvements, including gymnasium, social hall, and students' commons.

*101st Year begins September 18, 1928*

For information, apply to President JAMES A. KELSO

**Mark Bros.**

COOK'S PAINTS  
WALL PAPER  
and GLASS

*Estimates Free*



PHONE 62 172 S. JEFFERSON

**Cooper Clothing Co.**

HART SCHAFFNER & MARX  
and CAPPS & SONS  
CLOTHES

W. L. DOUGLAS SHOES

*The Store That Saves You Money*

PHONE 544 168 S. JEFFERSON

**Champion Shoe Shop**

H. F. MCGEE  
Proprietor

WE CALL FOR AND DELIVER WORK

**McKINNEY MOTOR COMPANY**

*Chevrolet*

*For Economical  
Transportation*

259 WEST NORTH STREET

MARSHALL, MO.



**College Crofters Corporation**

CLASS RINGS, PINS,  
MEDALS, COMMENCEMENT  
INVITATIONS, DIPLOMAS

Graphic Arts Bldg.  
Tenth and Wyandotte

KANSAS CITY MISSOURI

**GOOD THINGS TO EAT**

*That's Our Business*

PHONE 968

**College Inn**

COMPLIMENTS  
of  
**J.C. PENNEY CO.**  
*"where savings are greatest"*  
A NATION-WIDE INSTITUTION

AND THE CONSUMER PAYS

College Student: "Farm products cost more than they used to."

The Farmer: "Yes. When a farmer is supposed to know the botanical name of what he's raisin', an' the entomological name of the insect that eats it, an' the pharmaceutical name of the chemical that will kill it, somebody's got to pay."

Dreger had just surrendered his seat in a crowded car to an elderly lady, and then he made this remark:

"What I say is, a man should never let a woman stand. Some men never get up unless she's pretty, but you see, lady, it makes no difference to me."

AL'S BUTTER KRUST  
and  
LUXURY BREAD



**Marshall  
Baking Co.**

MARSHALL, MISSOURI

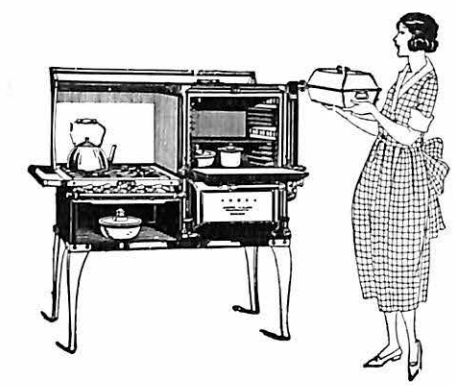
*Vanity Fair  
Shoppe*

LADIES'  
READY-TO-WEAR

*Beauty Parlor in  
Connection*

EAST ARROW STREET  
MARSHALL MISSOURI

EFFICIENCY IN THE  
KITCHEN  
Means  
ECONOMY IN THE  
HOME



COOK WITH GAS

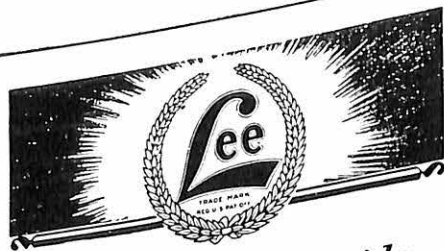
SAVE WITH ICE

**Missouri Gas and Electric Service Co.**

18—PHONE—18

GAS

ICE



**The Guide  
to High Grade Foods ~ ~**

**H**ERE is the brand that for more than a quarter of a century has stood for purity and finest quality. Whatever the food that bears this brand, whether put up in cans, cartons or bottles, it represents the highest standard of goodness.

Quality, satisfaction and protection of health are constantly assured the thousands of families who invariably insist on the Lee brand. It takes all the guess work out of buying.

**At Your Grocer's**

**Fred Fair**

*Lawyer*

Bank of Saline Building

PHONE 836

MARSHALL MISSOURI

**Brown & Reid**  
DIAMONDS, WATCHES  
and JEWELRY

Largest Stock in  
Saline County

*Established 40 Years*

NORTH SIDE SQUARE

The  
**Auditorium  
Theatre**

*Quality Entertainment  
Always*

OPERATED BY

SEARS AMUSEMENT  
CORPORATION

RAY HUGGINS  
*Resident Manager*

PAY YOUR  
SUBSCRIPTION  
TO THE  
NEW ATHLETIC  
FIELD

AUTOGRAPHS

Lined area for autographs with horizontal lines.