

MISSOURI VALLEY COLLEGE



3 7010 00239673 3



SABIDURIA

MR. M. RAFFLE COLLINS



"Honorable men, true men, men to whom sham is dishonor and truth a guiding star; men who see in the forest, the stars and immutable heavens but a sign of their own littleness in the scheme of things."

The

1961-----A typical college year combining the traditional and the new

The word "college" is magic; it creates a spectrum of thoughts and emotions. It may be better observed by the high school student looking forward with dreams of ivy and glamor, and by the "boys" looking back, as they gather in later years and sing their Alma Mater; it is seldom noticed by the college man or woman in the midst of it all. A college year will seem a recurring pattern; a pleasant maze of subtle wit, mugs, bridge and coffee, the campus on a rainy day, William Jewell rivalry, school spirit, books or slide rules; it may be set apart from others by such things as another tuition raise, outstanding victories by the football and basketball teams, and the brilliant productions of the Valley Players, especially noteworthy was "Bell, Book and Candle." This is tradition more so than ivy covered walls and shaded walks. But this college year is a separate kind of year---another kind of life in a place apart---where unimportant things can seem very important, where time just plain disappears, memories are too short, and plans usually mean little. Occasionally the student is touched by the greater realm of the national and international worlds, but mostly his discussions center around next week's party and not the Far East; last week's victory over Jewell and not the defection of Mitchell and Martin, because these were not actually a part of the student's life and so the world waits.....waits for the time and a later alteration by the student who has momentarily forgotten it. Until that time he will be lost in "college" and his temporary security, his anxieties, his loves, his hates, and his ambitions.

THE 1961 SABIDURIA
published by the students of
MISSOURI VALLEY COLLEGE
Marshall, Missouri

Sabiduria





To The Valley Viking Spirit

.....to the strength and ideals originating in the hearts of the first Vikings - the Northmen of old.

.....to the perpetuation of these ideals, and the loyalty and sincerity of purpose which constitute the true Viking character.

The Viking Spirit of Missouri Valley College is great in its entirety. But this greatness is specifically dependent upon the many small facets of college. This spirit is present in the loyalty of all Valley students and alumni, and it is demonstrated in the dedication of the administration.....

It is the supporting enthusiasm we show our sportsmen, who perhaps best typify the fighting spirit of the "Big Orange".....

It is our academic endeavor, by which we enrich our minds and deepen our identification with Valley.....

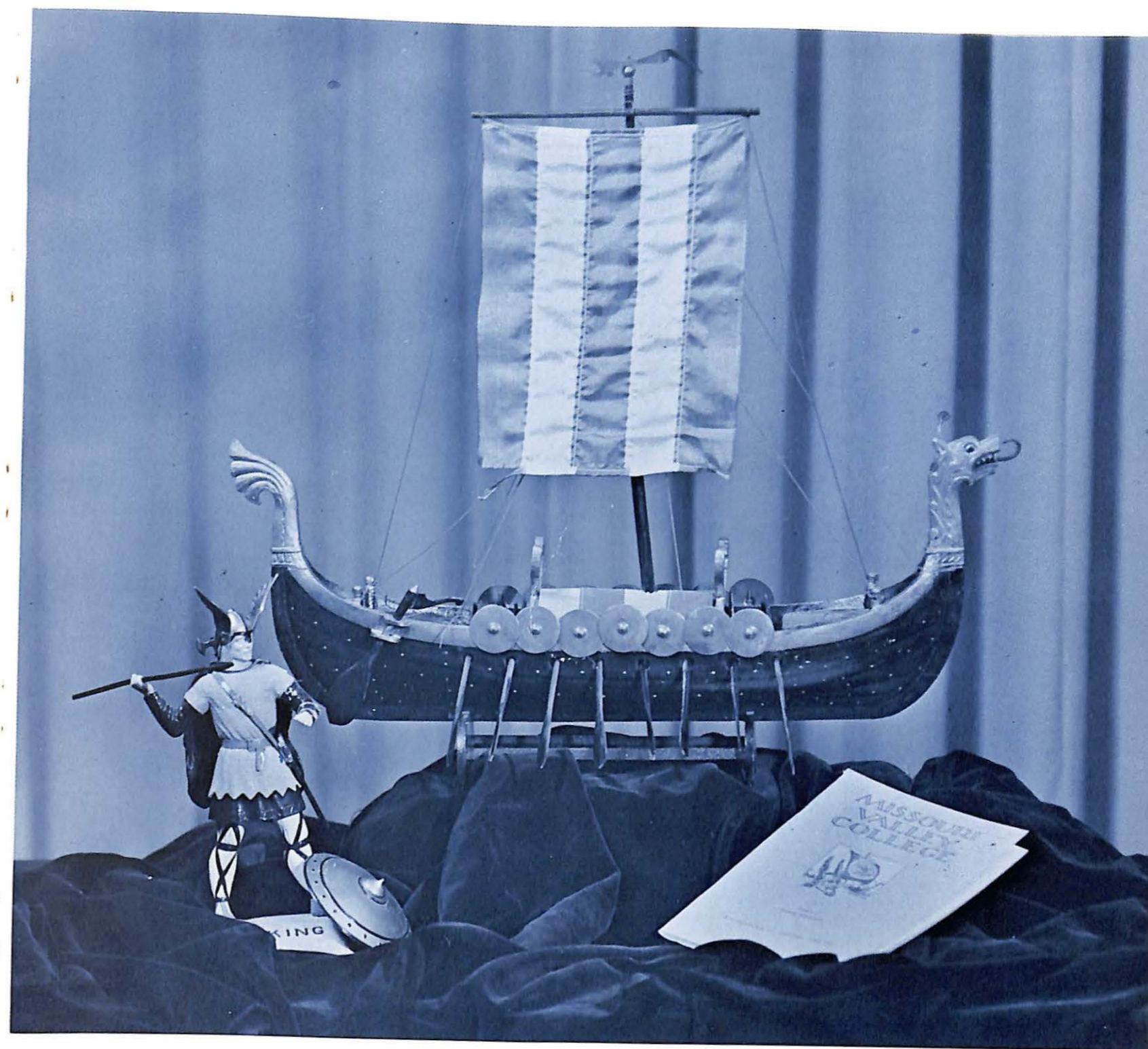
It is our endurance of purpose and courage of conviction, and the esteemed standard with which we, as Valley Vikings, meet the future.....

It is the respect and good conduct with which we represent our school, as a group or as individuals.....

These are the foundations of the traditional code of ideals which make us proud to sing, "Hail, we're from Missouri Valley!"

These are the evidences which have inspired this dedication of the 1961 Sabiduria.....

TO THE VIKING SPIRIT

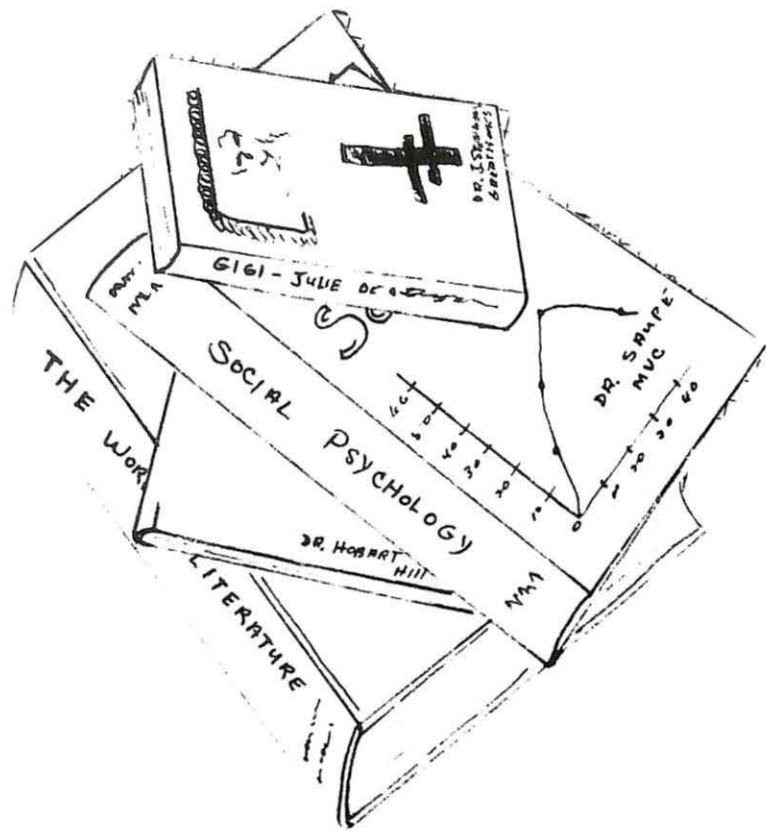


The Missouri Valley College, 1961

A college is a small world of students whose lives center about the campus; a world within a world. It is filled with countless daily occurrences, some of which we live, others we hear about, but to most, they go both unknown, and unnoticed. It is a world in which sorrow and success can follow each other in the space of an hour---from lingering doubt to anticipation of a big weekend. To the student, the most serious world problem can seem a little smaller and more remote when compared to the last night's basketball score, final exams, or the latest tuition raise. Actually, his removal is more mental than physical: it is a sort of preoccupation with studies and dates and campus activities and...just life in general, which leaves little time for thoughts of problems of national and international scope. We are aware of world events, yet somehow they are too removed, if not remote, and we continue in our active little world apart-----the college.

Missouri Valley College	1961	Page 2
Dedication	The Viking Spirit.	Page 4
Academics	faculty and classes	Page 8
Organization of the	College	Page 44
Activities of the	College	Page 108
Sports	and the athletic program	Page 120
Honoraries	ambitions and rewards.	Page 138
Royalty	kings and queens	Page 148





Academics

Man's highest goals have always included education. Until recently, the desire for an education was not so universal; the rapid pace of modern industrial and cultural development demands of the student more and more ability and better application of knowledge. They are the price of the maintenance of our country as a source of power in this unsettled world. This generation's skeptical and practical student has been entered involuntarily into a search he can never stop and never quite accomplish.

Each college is dependent on its administration for policy and direction; its true worth is based on the success of its methods and the ability of the scholars it employs. More people than are pictured on the following pages are responsible for the students' education----- from maintenance men to the president.





DR. M. EARLE COLLINS
President

History establishes traditions. An institution, like an individual, performs in a traditional manner because of the history of the past. Generations that have gone before us at Missouri Valley College have established historically sound and worth-while traditions.

It would not be our purpose to list these traditions because space does not permit. Students and faculty alike are aware of these traditions from the very time they first arrive on campus as new members of our Viking family.

College traditions tend to plot a path for the future. In a sense, a tradition is a habit grown large as it operates for a group of individuals rather than a single individual. These traditions which are records of the past tell a fascinating story. They portray the thoughts and actions of the generations that have gone before.

To break with a tradition is to break with the past. As individuals we are building new traditions at Missouri Valley although we who are now in a stream of activity do not realize that we are doing so. Generations to come will look back and see where you and I have been responsible for the establishment of Viking traditions.

Today you and I look back and rejoice in the traditions which previous generations have established for us. These become our guideposts. They supply the anchor to which we tie our Viking ship. They become the lighthouse of directing us in an uncharted future. Just as habits are important to each of us personally, so Viking traditions are important to Missouri Valley College.

VOLNEY C. ASHFORD
Vice President



The Viking Spirit to me is indicative of a winning spirit. In the classroom the Viking Spirit means excellence; on the athletic field the Viking Spirit is an example of pride in the athlete to do his best, a willingness on the part of the athlete to make necessary sacrifices to become the best athlete possible. The Viking Spirit on the athletic field is an example of sportsmanship at its best, both on the field and in the stands.

When I attend our college dramatic productions and listen to our various vocal and musical organizations perform, and listen to our debaters, I think of the part that the Viking Spirit plays on our campus in bringing out the God-given talents of our students.

When I think of the Viking Spirit, I always think of Dr. W. I. Ferguson. I think of the devoted years that he has spent here at Missouri Valley College. In his face may be seen the years of clean living, the years of working to help his fellow man. This to me is the Viking Spirit.

Administration



M. A. GAULDIN
Business Manager



RODNEY L. WELLS, M.A.
Associate Professor of History,
Registrar



GROVER C. REDFORD, JR.,
B.S., Dean of Men

MRS. J. W. McCLURE
A.B., Dean of Women



BYRON B. BANTA, M.A.,
Director of Admissions,
Associate Professor of History

WYLIE F. STEEN
Alumni Secretary and Placement
Director



Faculty



DEAN OF THE FACULTY
THOMAS E. TWEITO, Ph. D.,
Associate Professor of History



H. GLENN PENNY, M.S.
Assistant Professor of Economics
GERALD K. SAUNDERS, M.A.
Associate Professor of Economics



MARGARET MANNING McANINCH
M.A., Associate Professor of
English and Classics

GRACE YERBURY, Ph. D.
Professor of English

DOROTHY D. MORGAN, M.A.
Associate Professor of English
and History



W. HOBARD HILL, L.H.D.
Professor of Human Relations

RAYMOND BROCK, M.A.
Associate Professor of Education

A. H. BUEKER, M.A.
Supervisor of Student Teaching



CLAUDE L. FICHTHORN, Mus. D.
Professor of Music, Voice, Pipe
Organ, and Theory

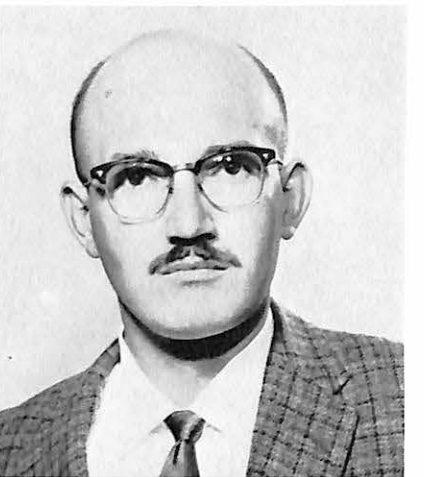
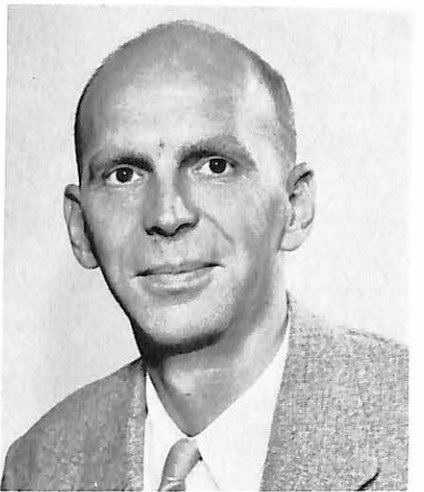


MARJORIE DANA JONES, M.M.
Instructor in Piano



WILLIAM L. FERGUSON, D. Sc.,
Professor of Mathematics

EDWIN P. FISHER, M.A.
Associate Professor of Mathematics



LAWRENCE C. THOMAS, Ph. D.,
Professor of Biology

JAMES E. THOMAS, M.S.
Professor of Physics

C. WAYNE FREEARK, M.S.
Professor of Chemistry



JOHN H. STELLWAGEN, Ph. D.
Professor of Modern Languages



JERALD A. CUNNINGHAM, M.A.
Professor of Speech and Dramatics

RUTH M. ZAHN, M.A.
Librarian



DOUGLAS J. ELWOOD, Ph. D.
Associate Professor of Religion and
Philosophy

MILDRED WINN SAUPE, Ph. D.
Professor of Psychology

HILLIS S. McKENZIE, Ph. D.
Associate Professor of Religion
Director of Chapel



*Senior Class Queen
Miss Diana Vail*



SENIOR CLASS OFFICERS

President	Eddie Leslie
Vice-President	Mel Rogers
Secretary	Joyce Renals



DORINE MAE ALEXANDER
Wichita, Kansas
Religion
Student Christian Association 3,4.

THOMAS ARNOTE
Belleville, Illinois
Humanics
Alpha Sigma Phi; Intramurals; American Humanics
Foundation.



PATRICIA BELZEY
Chicago, Illinois
Education
SNEA: Alpha Xi Delta.

TOM BELZEY
Chicago, Illinois
Economics
Tau Kappa Epsilon



THERESA BACKER
St. Louis
Education
Delta Zeta; S.N.E.A.: Newman Club.

DIANE ELIZABETH BARTHEL

Jefferson City, Missouri
Economics
Delta Board, Advertising Manager 3,4; Delta Staff,
Page Editor 4; Sabiduria Board; WSGA Council 3;
Band 1; WAA 1; Pep Club 2,3; Intramural Teams
1,2,3,4; Dean's List 4; Sabiduria Staff Typist 1; Alpha
Xi Delta, Vice President 4.



WILLIAM FREDERICK BALL

Slater, Missouri
Science
TKE 1,2,3,4; Chaplain 3; Intramural Teams 4; Dean's
List 1,2,3,4; Senior Honor Privileges 4; Basketball
1,2,3; Track 1,2; V-Club 2,3,4; Beta Gamma Phi,
Vice President 2,4.



RICHARD ARMIN BUEKER

Marshall, Missouri
Education
Interfraternity Council 4; Sigma Nu, President 4;
Vesper Choir 3,4; Choir 3,4; Norsemen 3,4; Intra-
mural Teams, Beta Beta Beta, Historian 4.

WILLIAM BLANTON

Independence, Missouri
Economics
WMVC, Basketball Manager 3,4; Intramurals.

MICHAEL LEROY BALLARD

Topeka, Kansas
Humanics
Alpha Phi Omega, Sergeant-at-Arms 3,4; Dean's List
3,4; Humanics Club 3,4.



MARY E. BULLEY

Aurora, Illinois
Education
S.S.L.C. 3; Senate Planning Committee 4; Sabiduria
Queen Attendant 4; Delta Zeta, Co-social Chairman
3; President 4; S.N.E.A. 4; A Cappella Choir 2,3;
WAA 3,4; Pep Club, Vice President 2,3; Women's
Intramurals; Dean's List 3; Union Board 4; Delta
Staff 3; W.S.G.A. 2,3,4.

DORIS CALDWELL

Slater, Missouri
Humanics
Delta Zeta; Humanics Club, Vice President 4.

JOHN ROSS CAMPBELL

Turtle Creek, Pa.
Economics
Alpha Sigma Phi, Corresponding Secretary 3,4; Vesper
Choir 3,4; A Cappella Choir 3,4; Norsemen 3,4.

JACK COBURN

St. Joseph, Mo.
Humanics
Alpha Sigma Phi, Social Chairman 3,4; Humanics 3,4;
President 4; Intramurals; St. Joseph Junior College
1,2.



TOMMY G. CURRY

Sedalia, Mo.
Economics
Student Senate 2; Academic Standards 4; Delta Staff 4;
Beta Gamma Phi 3,4; Phi Gamma Mu 3,4; Alpha Sigma
Phi 3,4; Dean's List 1,2,3,4; Sabiduria Staff 1,2; WMVC
Board; Student Christian Association 2,3,4; Young Hall
Council 3.



JOHN ALLEN HAYNER

Marshall, Missouri
Economics
TKE 1,2,3,4; Vesper Choir 1,2,3,4; A Cappella Choir
1,2,3,4; Norsemen 1,2,3,4; Town 1,2,3,4; Valley Play-
ers 1,2.

SUE HECKERT

Sedalia, Missouri
Economics
Delta Zeta; W.S.G.A. 3.



WALTER RAY HICKLIN

Kansas City, Missouri
Mathematics
Student Senate 1,2,3,4; Constitution Chairman 4;
Football 1,2,3,4; Basketball 1; Track 1,2,3,4; V-Club,
Secretary and Pres. 2,3,4; Intramural Teams 3,4;
Dean's List 3,4; SNEA 4; Who's Who 4; Young Hall
Council, Vice Pres. 4; Vice Pres. Junior Class 3;
All-American Football Team.



DEAN CRAFTON
Marshall, Mo.



RON DURNS

Kansas City, Mo.
Physical Education
Student Senate 3; WMVC Staff 4; Football 1,2,3,4;
Basketball 2; Track 3; VClub 2,3,4; Intramural Teams;
Young Hall Council 3.

VIRGINIA DUGGINS

Houston, Texas
Humanics
Delta Zeta, Vice President 4; American Humanics
Foundation.

CHARLES CONRAD HEEGN

Kansas City, Missouri
Science
Student Senate 2; Freshman Rules Comm. 2; Delta
Board 2; TKE 1,2,3,4; Vesper Choir 3; Norsemen 3;
Track 3,4; V-Club 3,4; Intramural Teams, Capt. 1,2,3,
4; Interfraternity Council 2,3; Beta Beta Beta, Presi-
dent 3,4.

JAMES M. FINNERTY

Marshall, Missouri



JEAN HICKS

Richmond, Missouri
Education
Delta Zeta; Historian 3; S.N.E.A.





JERRY MAX HILTON

Crane, Missouri
Philosophy
Student Senate, President 4; Chapel Committee 2,3;
Interfraternity Council 3; Freshman Rules Committee,
Chairman 2; Alpha Sigma Phi 1,2,3,4; Alpha Phi
Omega 1,2; Band 1,2; Norsemen 1,2,3; Who's Who 4;
Senior Honor Privileges 4; Dean's Honor List 2,3,4;
Phi Kappa Delta 3,4; Alpha Psi Omega 4; Chi Chapter
of Sigma Zeta 3,4; Student Christian Association 1,2,
3,4; Intramural Teams, Freshman Vice President 1;
Sophomore President 2.

GARY WAYNE HOVIS

Fredericktown, Mo.
Physical Education
Sigma Nu, Intramural Teams.



ART KNUEPPE

St. Louis, Mo.
Sigma Nu, Intramural Teams.



RONALD LAVIN

Chicago, Ill.



SUZANNE MARSHALL

St. Louis, Mo.
Education
Delta Zeta, Intramural Teams.



HENRY KIM

Seoul, Korea
Student Christian Association 4; Young Hall 4; Senior
Honor Privileges 4.

MARY KATHERINE LEIGHTON

Mexico, Missouri
Economics
Student Senate 4; Delta Board, Secretary 4; Delta
Staff 4; Delta Zeta 3,4; Intramural Chairman 4; Vesper
Choir 4; A Cappella Choir 4; Pep Club 1,2; Intramural
Teams; Student Christian Association 1,2; U.C.C.F.
3,4; WSGA 1,2,3,4; Standards 3; Campbell Hall 3,
President 4.



SONDRA SUE MOORE

Nevada, Mo.
Education
Delta Zeta 1,2,3,4; President 3,4; SNEA 1,2,3,4; Dean's
List; Who's Who 4; Cap and Gown 4; Senior Honor
Privileges 4; Homecoming Queen Attendant 4.

DON MOCKER

University City, Mo.
History
Student Senate 1,3; Freshman Rules Committee 2; Tau
Kappa Epsilon, Vice President 2,3,4; Special Events
Chairman 4; Student Christian Association 1; Delta,
Co-Editor 2; SNEA 4; Freshman Class President.

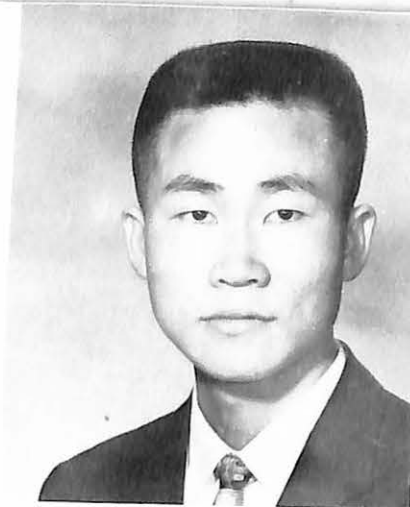
CHANG LEE

Seoul, Korea

JIMMIE LINSIN

St. Louis, Mo.

History
Delta Board, Chairman 4; Interfraternity Council,
President 4; Tau Kappa Epsilon, President 4; Intra-
mural Teams; Dean's List 3,4; Phi Gamma Nu, Presi-
dent 4; Alpha Psi Omega 4; SNEA 3,4; Who's Who 4;
Senior Honor Privileges 4.



WILLIAM PAUL LUBENSKY

Marshall, Missouri
WMVC Board 3; WMVC Staff 3; Voice of Valley 1;
Alpha Psi Omega 3,4; Valley Players 3,4.



KAREN SUE MOTT

Paris, Missouri
English
Vesper Choir 1,2,3,4; A Cappella Choir 1,2,3,4; Alpha
Psi Omega 3,4; Valley Players 2,3,4; Chi Chapter of
Sigma Zeta 3,4; WSGA 1,2,3,4; Band 1,2.

NORMAN NEHR

Chicago, Illinois



MELVIN LEE ROGERS

Fairfax, Missouri
Science
Basketball 1,2,3,4; Track 1,2,3; Student Senate 2,3,4;
Sigma Nu 3,4; Football 1,2,3; V Club 2,3,4; Dean's
List 3,4; Beta Beta Beta President 4; Senior Vice
President.

JUDY ROMPH

Jefferson City, Mo.
Humanics
S.S.L.C. 4; Delta Staff 1; Delta Zeta 2,3,4; Valley
Players 3,4; Alpha Psi Omega 4; American Humanics
Foundation 1,2,3,4; WSGA 1,2,3,4.

DONALD PLUMMER

St. Louis, Missouri
Economics
TKE



JOHN ROOS

St. Louis, Mo.
Economics
Tau Kappa Epsilon

LELAND LOYD POTTER

Mendon, Missouri
Physical Education
S.S.L.C., Vice Chairman 3,4;
Basketball 1,2,3,4; Co-Cap-
tain 4; Track 1,2,3,4; V Club
2,3,4, Secretary 4; Intramural
Teams; Beta Beta Beta 4;
Young Hall Council 3,4.



HELEN RENSCH

Minneapolis, Minn.
Physical Education
Student Christian Association 1,2,3,4;
UCCF Council 4; WAA 1,2,3,4; Pep Club
1,2,3,4; SNEA 1,2,3,4.



JOYCE RENALS

Marshall, Missouri
Education
Delta Staff 3; Delta Zeta, Sec-
retary 4; Vesper Choir 2; Hu-
manics, Chaplain 2; SNEA 4;
Student Christian Association
1,2,3, WSGA 4; Sophomore
Vice President, Senior Treas-
urer.



ROBERT D. STUART

Granite City, Illinois
Science
Sigma Nu, Intramurals, Beta
Beta Beta Manager Basketball
Team; Basketball; Laboratory
Assistant; Senior King; V
Club.

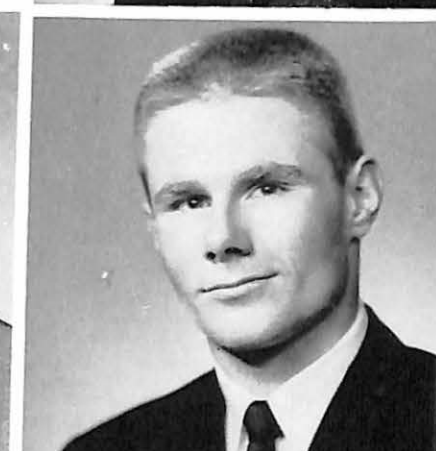


ARLIS LEE TAYLOR

Marshall, Missouri
Humanics
American Humanics Founda-
tion; Dorm Attendant.

ROBERT SCHAFER

Gothenburg, Nebraska
Humanics
Alpha Phi Omega 3,4; One-Act
Plays 3.



JOHN CHRIS SHARP

St. Louis, Mo.
Humanics
Student Senate 4; Sabiduria Board 4;
S.S.L.C. 3; Alpha Sigma Phi 1,2,3,4;
Alpha Phi Omega 3,4; UCCF 3; American
Humanics Foundation 1,2,3,4.



PAUL J. RYAN

Marshall, Missouri
Humanics
American Humanics Founda-
tion 1,2,3,4; Newman Club 1,2,
3,4; Vice President 1; WMVC
Staff 4; Alpha Phi Omega 1,2,
3,4; American Camping Assoc-
iation 1,2,3,4; Boy Scouts of
America 1,2,3,4.



DOROTHY THOMAS

Kansas City, Mo.
Economics
Delta Circulation Manager 4; WAA 1; Pep Club 1;
WSGA 4; Alpha Xi Delta, Corresponding Secretary 4.

GLORIA ANN WAGLEY

Chicago, Ill.
Economics
SSLC 4; Sabiduria Staff 4; Alpha Xi Delta, Social
Chairman 4; Order of Diana 4; Vesper Choir 2; WAA
2; Pep Club, President 4; Intramural Teams.



DIANA VAIL

St. Louis, Mo.
Mathematics
Sigma Tau Delta 4; Vesper Choir 2,3; Delta 1,2,3;
Sabiduria 2; WAA Vice President 4; Student Senate,
Vice President 4; Who's Who 4; SSLC Chairman 3;
WSGA Vice President 4; SNEA 3,4; Junior Class Sec-
retary; Alpha Xi Delta, Recording Secretary 4; Stu-
dent Christian Association 2; Canterbury Club 2,3,4.

DON WILSON
Marshall, Mo.



SALLY JANE WILSON

Crane, Mo.
Education
Sabiduria Queen 4; Freshman Class Sec-
retary, Treasurer; Student Senate 3;
Liaison Council 3; Sabiduria Staff 4;
Alpha Xi Delta 1,2,3,4, President 3,4;
Cheerleader 2; Dean's List 2,3; Sigma
Tau Delta 4; SNEA 1,2,3; Vesper Choir
2,3; Band 1,2; Pep Club, Secretary 2;
Who's Who 4; Cap and Gown 4; Senior
Honor Privileges 4; Sweetheart of Alpha
Sigma Phi 3.

BARBARA LEE VANSICKLE

Macon, Mo.
Christian Education
Chapel Committee, Secretary
1,4; Alpha Xi Delta 4; Pledge
Vice President, Student
Christian Association 1,2,3,4;
Who's Who 4; UCCF 3,4.



ROBERT WOODSMALL

Independence, Mo.
Science
Interfraternity Council,
President 3,4; Dean's List
4; Beta Beta Beta 4; Sabiduria
Board 3,4; Sigma Nu, Com-
mander 3.



JUNIOR CLASS OFFICERS

President Everett Rehkop
Vice-President Don Chambers
Secretary Pat Hays

*Junior Class Queen
Miss Jo Anne Lecates*





VIRGINIA BARNDS
Fort Worth, Texas
SONDRA BARNES
St. Louis, Missouri



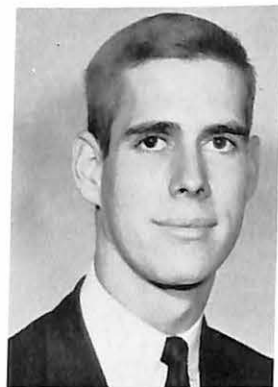
KAY LYNNE BORDEN
Kansas City, Missouri
GEORGE BURRIS
Webster Groves, Missouri



SUE FRANCIS
Marshall, Missouri
JUDY GIBSON
Independence, Missouri



GERALD HEIL
Hardin, Missouri
JAMES HELM
Kansas City, Missouri



JAMES CAMP
Marshall, Missouri
DONALD CHAMBERS
Webster Groves, Missouri



GENE HOWARD
Marshall, Missouri
KENNETH JAGODITSCH
New London, Missouri



MIKIO KAMIMURA
Marshall, Missouri
JIM KEITH
Geneva, Illinois



PATRICIA CLARK
Kansas City, Missouri
RONALD CRADDOCK
Raytown, Missouri



SHIRLEY ANN DALLWITZ
Florissant, Missouri
VALDINA FINK
Chicago, Illinois



LARRY LATHUM
Marshall, Missouri
JO ANN LECATES
Delmar, Maryland





CARL LONG
Goldfield, Nevada
PETE MacNICHOLS
St. Louis, Missouri

SCOTT McCULLOCH
Fullerton, California
BARBARA MILORADOVICH
Webster Groves, Missouri



BARBARA MAITLAND
La Plata, Missouri
STEVE MARTIN
Lee's Summit, Missouri



ROBERT MITCHAM
Addison, Illinois
JUDY MORGAN
St. Louis, Missouri



LOIS NEIDHOLDT
Brunswick, Missouri
LARRY NORTON
Kansas City, Missouri



JOHN SIKORA
Madison, Illinois
CAROLYN SLEAD
Marshall, Missouri

DONALD PEEBLES
Belleville, Illinois
FRANK PELLEGRINE
Buffalo, New York



EVERETT REHKOP
Blackburn, Missouri
BERNICE SAMSON
Marshall, Missouri



CAROLYN SANDER
Webster Groves, Missouri
RICHARD SCHERPENISSE
Bowling Green, Missouri



VAN SCOTT
Marshall, Missouri
JUDY SIEVERS
St. Louis, Missouri





DAVID STALLING
Wellington, Missouri
CHARLES STEPHENS
Raytown, Missouri



SANDY STEPHENS
Kansas City, Missouri
DANA STREET
Clinton, Missouri



SUSAN STULL
South Bend, Indiana
SHIRLEY TEGTMEYER
LaMonte, Missouri



RICHARD UHLEMANN
Highland Park, Illinois
PAUL WECHTER
Oregon, Wisconsin



KAREN WOODS
Sedalia, Missouri

*Sophomore Class Queen
Miss Linda Bryan*



SOPHOMORE CLASS OFFICERS

- President Tom Butterfield
- Vice-President Jim Orvis
- Secretary Carol Stites



SANDRA ALBIN
Webster Groves, Missouri

JOHN ALIBERTO
Marshall, Missouri

MARTHA BELL
Kansas City, Missouri



LINDA BRYAN
Rock Hill, Missouri

CORA ANN BULT
Chicago, Illinois

TOM BUTTERFIELD
Raytown, Missouri



MARCIA BYWATERS
Marshall, Missouri

SUZANNE COOKE
Kansas City, Missouri

CHARLES DURNETT
Grandview, Missouri



TED EPPLE
Clinton, Missouri

DAVID FERRIL
Liberty, Missouri

MARTHA GARBER
Jefferson City, Missouri



ED GETTINGER
Wheaton, Illinois

MARY ANN GOODE
St. Louis, Missouri

KENNETH GRAHN
Chicago, Illinois



NANCY GROSSMAN
Dewitt, Missouri

LYNN GURLEY
Kirkwood, Missouri

RAY HALEY
Houstonia, Missouri



RITVA HALINEN
Myllykoski, Finland

DONALD HANSEN
Elmwood Park, Illinois

CANDACE HARDAWAY
Grandview, Missouri



FRANCES HART
Independence, Missouri

JAMES HAYES
Peculiar, Missouri

CLAUDIA HEADEN
St. Louis, Missouri



ART HOBBS
Bowling Green, Missouri

JOHN HOOD
Speedway, Indiana

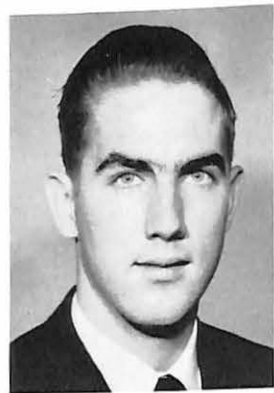
WALTER HOUSEMAN
Woodbridge, New Jersey



RANDALL KRISTOFFERSON
Vandalia, Missouri

SUSAN McLAUGHLIN
Marshall, Missouri

KAREN MILNES
Manchester, Missouri



DANIEL MOORE
Eureka, Missouri

MARY MOORE
Kansas City, Missouri

ANN NEUENSCHWANDER
Garden City, Missouri



CLEVELAND OGLE
Lamay, Missouri

GENE OKESON
Hebron, Illinois

DAVID PARKHURST
Sedalia, Missouri



DONNA PAYNE
Waverly, Missouri

SUSAN PLACE
Lee's Summit, Missouri

SHARON ROBERTS
St. Louis, Missouri



RUTH ANN ROE
Hannibal, Missouri

SUSAN SCHAEFER
St. Louis, Missouri

DONNA SMITH
Kansas City, Missouri



JUDITH SPORLEDER
St. Louis, Missouri

RICHARD SPORLEDER
Marshall, Missouri

RAYMOND STECINA
Perth Amboy, New Jersey



JOHN STENSTROM
Minneapolis, Minnesota

CAROLE STITES
Richmond Heights, Missouri

RONALD THIES
Mission, Kansas



BRAD VANHECKE
Marshall, Missouri

MARCIA VORHIS
Marshall, Missouri

DAVID WALKER
Pewaukee, Wisconsin



JANE WARREN
Carrollton, Missouri

RUSSELL WASSON
Loveland, Ohio

DAVID WELLS
Marshall, Missouri



BARBARA WENDE
Webster Groves, Missouri

WILLIAM WHITE
Marshall, Missouri

KAY WILLIAMS
Goodman, Missouri



DENSEL WOODSMALL
Independence, Missouri

GORDON ZION
Milwaukee, Wisconsin

*Freshman Class Queen
Miss Joyce Morton*



FRESHMAN CLASS OFFICERS

President Tom White
Vice-President Dick Scott
Secretary Joyce Morton



JUDITH ALEXANDER
Kansas City, Missouri



MARY KAYE ALEXANDER
Kansas City, Missouri



RONALD BERG
Kirkwood, Missouri



NANCY DELANEY
Springfield, Illinois



LINDA DUNCAN
Moberly, Missouri



LANETTE DeSCHANE
St. Louis, Missouri

DONNA BLEVINS
Carrollton, Missouri



NINA BOND
Marshall, Missouri



DORIS BORGELT
Jefferson City, Missouri



LINDA ELSEA
La Plata, Missouri



MARY E. FAUBION
Kansas City, Missouri

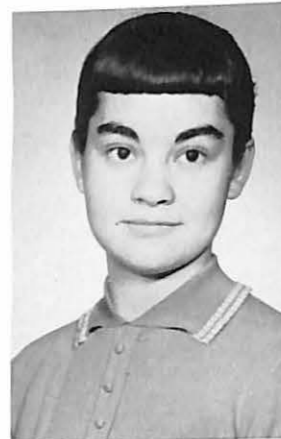


KATHLEEN FEATHERSTONE
St. Louis, Missouri

BERT BOWEN
Webster Groves, Missouri



FRANKIE BYERS
Slater, Missouri



MARGARET CASE
Parkville, Missouri



BILL COFFEE
Sullivan, Illinois



MARILYN FELDMANN
St. Louis, Missouri



CHARLES FENNER
Marshall, Missouri



WAYNE FERRIN
Marshall, Missouri





MARYLAND FINK
Chicago, Illinois



ELIZABETH GUTHREY
Miami, Missouri



WENDY HANSEN
St. Louis, Missouri



SANDRA KNAPICK
Chicago, Illinois



MARLENE KRUSE
Marshall, Missouri



VIRGINIA LOMBARDI
Chappaqua, New York

MARILYJ HARRELL
Kansas City, Missouri



JUNE ANN HUNT
Florissant, Missouri



FOREST DAVID INGRAM
Independence, Missouri



DAVID McCLENAGAN
Kansas City, Missouri



FRANK MEENACH
Cincinnati, Ohio



PHILIP MELBERG
Hamberg, New York

CAROL JENSEN
Downers Grove, Illinois



CONNIE JOHNSON
Blue Springs, Missouri



STAN JONES
Salem, Missouri



WILLA MURRAY
Marshall, Missouri



JOYCE MORTON
Marshall, Missouri



MARTHA MUTTI
Paris, Missouri



KAREN OTWELL
Belleville, Illinois



Kangaroo Court 1960



ANN PLACE
Lee's Summit, Missouri



NICK PENNINGTON
Grandview, Missouri



FRANCIS ROBERTS
Camdenton, Missouri



MARTHA SELSOR
Boonville, Missouri



"I'm a hog for ya baby"

"Don't flip your wig, Judge"

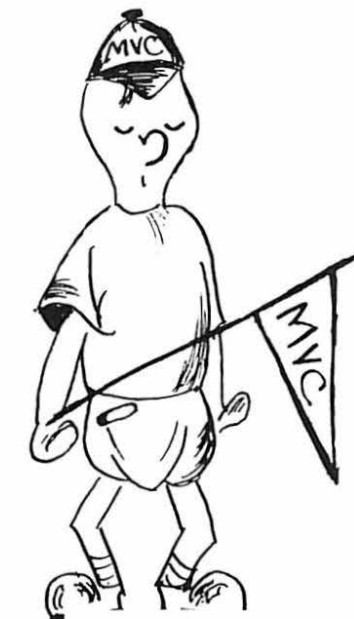
PHIL SIMS
Afton, Missouri



LEDONA SHARPE
Platte City, Missouri



JAMES DERALPH STINSON
Grandview, Missouri



Button FROSH!

"Now, go out there and sell"



JOHN THOMPSON
Stewartville, Missouri



BARBARA WESSAL
Kansas City, Missouri



THOMAS WHITE
Burbank, California



RICHARD WYATT
San Angelo, Texas



Nighty, Night!



Roll that peanut, roll





Government, in its many forms, means regulation. The college student who is old enough votes in national and local elections and follows them with a critical eye and venturesome opinion, especially in an election year. While world problems were aired, in the UN with Khrushchev pounding the table with his shoe, and the Capital resounding with Social Security Medical Plans and defense bills--college government moved steadily onward. Student government is manifested in many forms-----through Class Officers, Student Council, committees and other organized groups.

The Student Senate



Come on now, let's get serious.

The Student Senate consists of representatives selected by the students from town, Valley Forge, and the various campus dormitories and organizations. Meeting weekly, this group is responsible for the proper co-ordination of all the campus life. Functioning through its various committees and with the help of the advisor, Mrs. J. W. McClure, the Senate continuously strives toward greater achievement and more effective student government.

JERRY HILTON, President, DIANA VAIL, Vice President



It is an integral part in the organization of the campus. The student voting at election time plays a part in the success by casting his ballot intelligently and sensibly. Once chosen, the elected representatives and officers hold in their hands the power to fulfill their trust. Problems must be realized and faced and subsequent, effective action must be taken. There must always be a willingness to participate actively and to progress positively. For guiding and earnestly working for the Student Government, we salute two fine Vikings---

Mr. Jerry Max Hilton - President
Miss Diana Vail - Vice-President





Virginia Barnds, Secretary: Tom Butterfield, Senator-at-Large: Dave Walker, Treasurer.

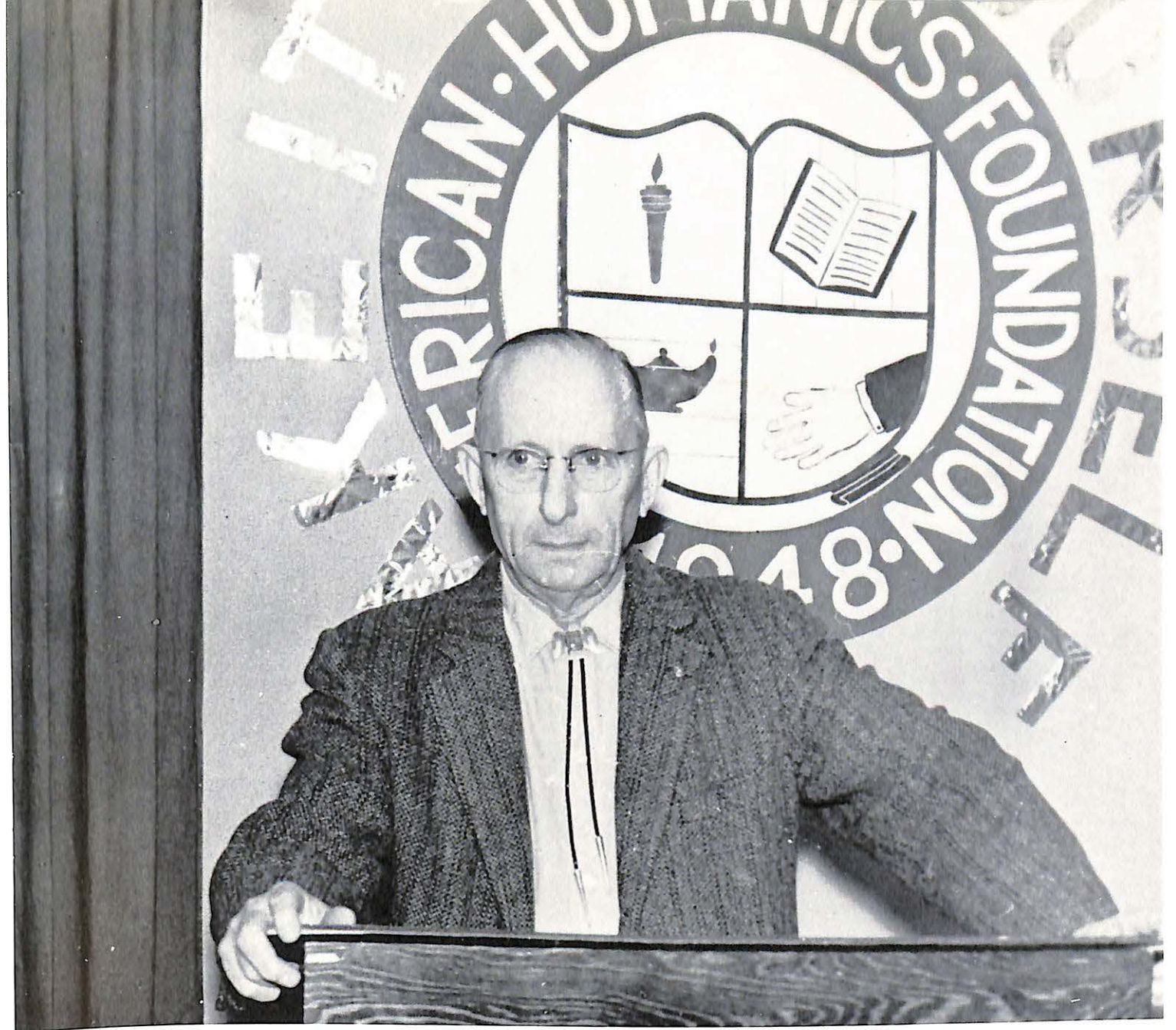


Wasn't Si Zentner great!



Jerry at work?!

THIRD ROW Left To Right, Bob Cross, Ken Grahn, Stan Jones, Mary Leighton, Mary Moore, David Wells. FIRST ROW: Dave Walker, Diana Vail, Jerry Hilton, Virginia Barnds, Tom Butterfield. SECOND ROW: Art Kneuppe, Judy Morgan, Joyce Morton, Kay Williams,



*American Humanics Foundation
Take It Upon Yourself---*

Student Association



Douglas Monahan and "Let's look at Leadership"



TOP ROW: Lee Taylor, Richard Johnson, Bob Reising, Norman Gross, Phil Melberg, Francis Roberts, Bill Coffee, Jack Alongi. FIFTH ROW: John Sharp, Bill McLaughlin, Larry Latham, Gordon Zion, Tom Arnote, Ed Harris, John Aliberto, Bob Chrisman, Lee Stieger, Ben McIntyre. FOURTH ROW: Ron Shelby, Jack Coburn, Scott McCulloch, Paul Wechter, John Hood, Larry Smith, Bob Sedlacek, Dave Woodman, Russ Wasson, Frank Meenach. THIRD

ROW: Don Leedy, Dr. Hill, Jim Mallory, Dick Blakeney, Kenny Carter, Jim Wilson, Cleve Ogle, Bob Fox, Dale Burrough. SECOND ROW: Bob Schafer, Susan Moose, Karen Otwell, Pat Hays, Marybeth Faubion, Ruth Ann Roe, Virginia Duggins, Donna Smith, Dennis Shaw. FRONT ROW: Bradley Horne, Nick Pennington, Frank Pellegrine, Don Hansen, Mike Ballard, Ed Donahue.

Seminar Speakers



Mr. Judson Jussell, Region VIII, Scout Executive

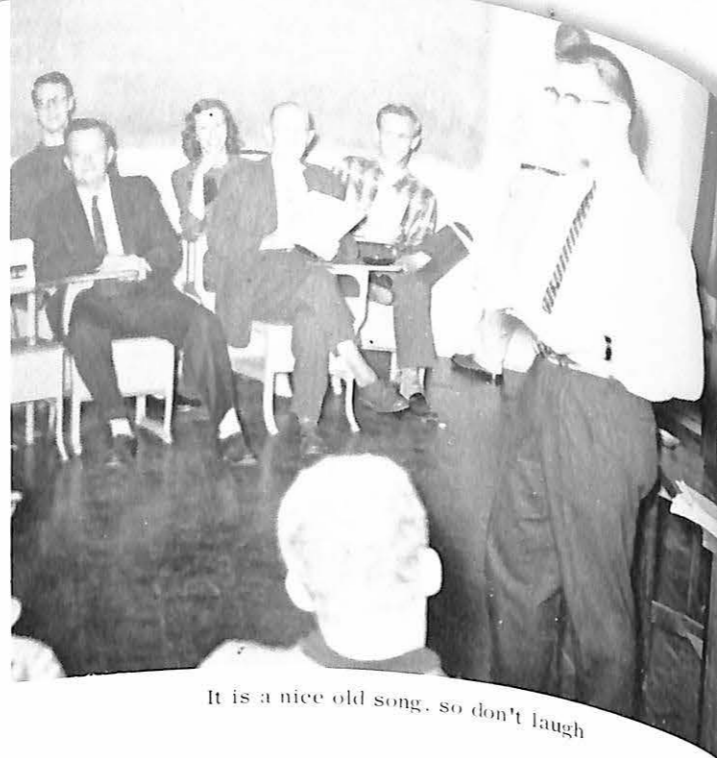


It's a great song book, Hobe



Thanks Mr. Harrington, for a fine Seminar

Humanics In Action



It is a nice old song, so don't laugh



Well, don't be so shocked--This is the minutes of our last meeting

Oh no!! Another pop test



A panel of foreign students



Watch that ear--no not my nose!!



"Doings" presentation



Margaret speaks to the Seniors

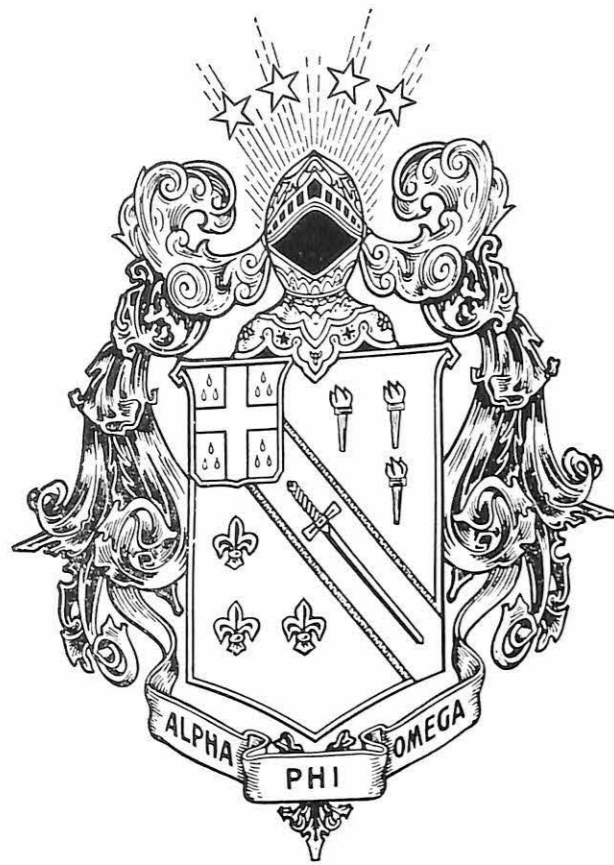
Junior Senior Banquet



Thanks for a fine inspirational challenge, Margaret

Let's get some spirit into this song.





*Epsilon Epsilon
Chapter
of
Alpha Phi Omega*

Alpha Phi Omega is a national service fraternity, composed of college men who have been previously affiliated with the Boy Scouts, and have an earnest desire to render service to others.

Being a Service Fraternity, Alpha Phi Omega crosses all lines of honorary, social, and professional fraternities, and thus members of other campus organizations may also be active in this fraternity. Through cooperation with other organizations the program of Alpha Phi Omega may be made most effective.

The program of Epsilon Epsilon Chapter here at Valley is built around a constant effort to serve the student body and faculty, the youth of our community, members of the fraternity, and the nation as participating citizens. No year is declared successful unless at least one major aspect of the overall program is devoted to serving each of the above areas. Be a Leader..Be a Friend..Be of Service...



SEATED: Left To Right, Frank Pellegrine, Dick Blakeney, Norman Neher, Bob Schafer. STANDING: Ben McIntyre, Dick Wyatt, Don Leedy, Bob Reising, Mike Ballard, Frank Alongi, Dave Woodman,

Dale Burroughs, Frank Meeneack, Richard Johnson, Bill Farmer, Bob Fox, Phil Melberg, Bill McLaughlin, Phil Kranzberg.



Wylie speaks at the banquet



Junior Leader Training



Paul tells about National Convention



Who burned it?

Student Social Life Committee

This committee composed from representatives of different organizations on campus, meets every Monday morning in order to co-ordinate, plan, and regulate the social life of the campus.



LEFT TO RIGHT: Gloria Wagley, Skip Uhleman, Pat Clark, Stewart Kendrick, Claudia Headen, and Virginia Barnds.

Women's Athletic Association

This organization provides a balanced athletic program for its members. Nucleus of activity was intramurals, which included hockey, basketball, volleyball, and baseball. The teams were composed of members of Alpha Xi Delta, Delta Zeta, and the Independent Women.



LEFT TO RIGHT: Pat Clark, Karen Otwell, Dona Sharpe, Helen Rensch, Sandy Barnes, Virginia Barnds, Barbara Maitland, Diana Vail, Lanette DeShane, Marilyn Feldman, Linda Elsea.

Interfraternity Council

This council consists of two representatives from each fraternity on campus. To encourage unity and spirit among newly elected Greek men, to co-ordinate Greek activities, and to supervise rush activities are the purposes of IFC.



LEFT TO RIGHT: Denny Woodsmall, Jim Orvis, Don Chambers, Jim Keith, Jim Linsin, Crawford Stolze, Jim Hermerding.

Panhellenic Council

The co-ordinating and governing body of the sororities on campus is the Panhellenic Council. Questions involving Greek social events scholarship, and rushing and pledging were settled by Council action.



TOP ROW: Left To Right, Shirleyann Dallwitz, Janet McCrae, Barbara Maitland.
BOTTOM ROW: Lynn Gurley, Barbara Miloradovich, Pat Hays.



DR. WILLIAM F. ORR

"There is nothing in us of any value without Christ."

Religion is an integral part of college life. Just as the college provides lectures for the mind, and dances for one's social life, it also provides a religious atmosphere and religious organizations for the spirit.

Missouri Valley College recognizes the religious groups on campus as a reflection of the increasing student awareness that there is something more to college life than books and parties. They have, therefore, endeavored to maintain this atmosphere by establishing Faith and Life Week. This is a week of chapel services, seminars, and discussion groups, set aside to draw the students' attention more acutely to the search which he himself must go through in his growth. (1960 SABIDURIA).

In co-operation with the administration the United Campus Christian Fellowship has been able to conduct a successful year of meeting the Religious needs of all students. As Paul J. Braisted put it, "If either Religion or education is to fulfill its high mission in society, they must recognize their need of one another and join forces in common endeavor."

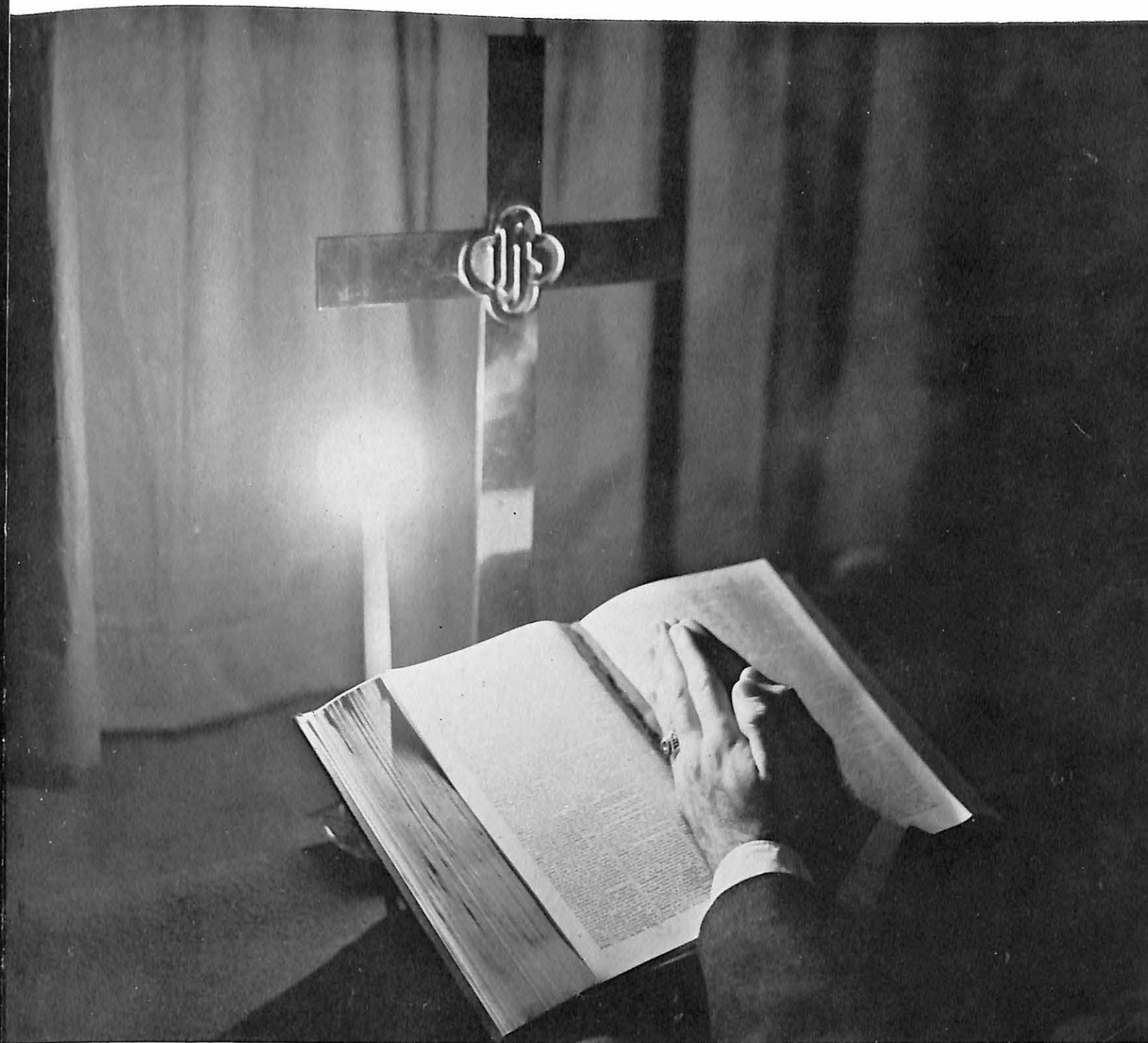
Missouri Valley College was privileged to have for its 1960 Faith and Life Week, the Distinguished Professor of Biblical Theology at Pittsburgh Seminary, the Reverend Dr. William F. Orr. He is a graduate of Southwestern College, Memphis, Tennessee, and Louisville Presbyterian Seminary, Louisville, Kentucky. He received his Ph. D. from Hartford Seminary, Hartford, Connecticut, under the English Theologian Dr. H. H. Farmer. A former Dean and a professor for twenty-one years, Dr. Orr brought to our campus an intellectual depth and religious insight.

"Christian Imperatives" was the theme of Faith and Life Week November 6-10, 1960. On Sunday evening, the United Campus Christian Fellowship held an informal reception for Dr. Orr in the lobby of MacDonald Hall.

At the Monday morning chapel service, Dr. Orr shared with us his interpretation of "The Purpose of Life." Later on that evening a question and answer period, concerning his morning message, was held in MacDonald Hall. At 10:30 that same evening, the Inter-Fraternity Council held an informative "Bull" session in the Alpha Sigma Phi House "T" Room.

Chapel on Tuesday was highlighted by Dr. Orr's talk on "Ethics and Marriage." Following the evening meal, Young Hall became the host to an informal discussion about the morning message. The Fellowship Of Christian Athletes also sponsored a "Bull" session in the lobby of Young Hall later on that evening.

To conclude our morning talks of inspiration, Dr. Orr spoke on the theme "Forgiven Sinners." To answer any further questions, not previously covered in public or private talks with Dr. Orr, the Women's Student Government Association held a discussion later on that evening in the lobby of MacDonald Hall.



Canterbury Club

The Canterbury Club is open to students who are interested in the Episcopal Church and its work.



LEFT TO RIGHT: Virginia Barnds, Diana Vail, Peggy Case. BACK ROW: Skip Uhlemann, Chuck Durnett.

United Campus Christian Fellowship

The Fellowship exists primarily for the purpose of providing students with religious guidance in order to promote thoughtful Christian discipline.



SEATED Left To Right, Martha Selsor, Mary Moore, Pat Hays, Kay Williams, Linda Elsea, Barbara Van Sickle. SECOND ROW: Standing, Lanette DeShane, Virginia Childers, Judy Sievers, Karen Otwell, Judy Sporleder, Dana Street, Mary Ann Goode. THIRD ROW: Helen Rensch, Randall Kristofferson, Dick Sherpinesse, Bob Shafer, Bill Foster, Chang Koo Lee, Phil Melberg.

Valley Players

The Valley Players is an organization composed of members of the student body, who have helped produce or direct any dramatic production at Valley. Its sponsor is Mr. Jerald Cunningham.



SEATED: Left To Right, Martha Mutti, Claudia Headen, Shirleyann Dallwitz, Kathy Featherstone, Barbara Maitland, Judy Romph. BACK ROW: Skip Uhlemann, Jim Linsin, Ron Brink, Chuck Durnett, Bill Lubensky, Jerald Cunningham.

Vesper Choir

The Vesper Choir is an association of people who have been singing together under the direction of Dr. Donald M. Fouse. It is set up as a group to sing for Chapel programs, and for the purpose of enjoying music.



RIGHT TO LEFT: Donna Blevins, Candy Hardaway, Mary Leighton, Pat Krentler, Joyce Morton, Judy Gibson, Anne Huston, Virginia Childers, Mary Ann Goode, and Virginia White. BACK ROW: Dave Farrel, Linda Spencer, Ralph Butler, Judy Sporleder, and Jim Rogers.



GEORGE BURRIS
Editor-in-Chief

D
E
L
T
A



TOM CURRY
Associate Editor



PHOTOGRAPHER-Mikio Kamimura



EDITOR-Susie Slead

The workings of a large paper were appreciated by the members of the Delta Staff, who put out each Friday a record of campus news, including past and future events and current opinions of the student body. It might have seemed as if their work was never done, for no sooner was one issue at the printer's than work was underway for the next week's paper. It was hard but enjoyable work, reporting meetings and coming events, photographing sports contests, writing features and editorials to arouse the student body, and writing and typing pages upon pages of copy to be copy-read and corrected.

Editors 1961 Sabiduria

- Carolyn Sue Slead Editor
- Susan Place Associate Editor
- Roger Slead Business Manager
- Lynn Gurley Faculty Editor
- Janice Hendricks Senior Class Editor
- Barbara Miloradovich and
Sharon Roberts Class Editors
- Marybeth Faubion Organizations Editor
- Nancy Delaney Activities Editor
- Marilyn Harrell Honoraries Editor
- Shirley Tagtmeyer Forge Editor
- Gordon Medaris Art Editor

PHOTOGRAPHERS

- Mikio Kamimura
- Joyce Renals

STAFF ASSISTANTS

- Ann Place
- Walt Hicklin
- Maryland Fink
- Leland Potter
- Ed Leslie
- Pat Krentler
- Claudia Headen

- Editor-in-Chief George Burris
- Associate Editor Tom Curry
- First Page Editor Diane Barthel
- Second Page Editor Grace Reilly
- Third Page Editor Pete MacNichols
- Sports Page Editor Stan Jones
- Page Layout Editor Wilhelmine Lowe
- Business Manager James Wilson

- Advertising Manager John Aliberto
- Circulation Manager Dot Thomas
- Photographer Mikio Kamimura
- Faculty Advisor Dr. Grace Yerbury
- Staff Assistants Sue Schaefer, Don Hunt, Karen Otwell,
Chris Espeland, Ginny Sherwood, Mary Leighton,
Chuck Mohr, Bill Ulery, Ritva Halinen, and Dick Wyatt



Debate Team

A workshop training program was held throughout the year under the direction of Dr. McKenzie. The purpose of the workshop was to stress the fundamentals of formal debating and to stage mock debates so that the members could become more proficient in their attacks.



STANDING: Left To Right, Frank Pellegrine, Dave Woodman, Bob Ewens, and Dick Wyatt. SEATED: Jim Camp, Ron Fenton, Scott McCulloch, Bill Coffee. Standing at the podium is adviser, Dr. McKenzie.

Volunteer Friends Association

This organization, in operation for the first time this year, has been established for the mutual benefit of the Valley students and the students at The Marshall State School, for Mentally Retarded Children. The Valley students offer friendship and guidance to these children.



STANDING: Right To Left, Linda Spencer, Janet McCrae, Frank Meenach, Martha Redstrom, John Redstrom, Diane Vail, Dick Blakeney, Sandy Albin, and Phil Sims. SEATED: Grace Reilly, Tom Arnote, Tom Butterfield, Suzanne Marshall, Susie Saxton,

Gordon Medaris, Jerry Max Hilton, and Judy Romph. Seated on the floor are Marybeth Faubion, Claudia Headen, Shirley Dallwitz, and Judy Sporleder.

Women's Student Government Association

The WSGA is composed of representatives of different sections of the dormitory. This group works for improvements and changes in the dorm as a self-governing unit. This working together showed its effectiveness in the Annual WSGA Dance.



FIRST ROW: Standing Left To Right, Carol Stites, Lynn Gurley, Linda Anderson, Theresa Backer, Joyce Renals, Carol Jensen. SECOND ROW: Lanette DeSchane, Marilyn Feldman, Virginia Barnds, Jane Warren, Jean Hicks.

SEATED: Left To Right, Kay Lynn Borden, Judy Morgan, Mr. Brock, Pat Clark, Marilyn Saddler. STANDING: Joyce Renals, Sandy Barnes, Sandy Stephens, Eileen Pearson, Lois Neidholt, Susan Place, Linda Bryan. SECOND ROW: Walt

Hicklin, Alden Elsea, Sandy Albin, Helen Rensch, Jean Hicks, Barbara Maitland, Virginia Childers, Jim Finnerty, Ed Leslie.



Student National Education Association

Sharing ideas and experiences is an important way of learning, especially in the teaching profession. Members of the SNEA have discovered this fact by discussing problems among the group and often finding a proven solution. This idea-sharing, along with panel discussions, speakers and films has helped SNEA improvement and fellowship.

V-Club

OBJECTIVES

To uphold, maintain, and promote clean and wholesome athletics, and to cooperate in every way with the department of athletics in all its efforts and requests to preserve the high morals of athletics of the student body of Missouri Valley College.

OFFICERS ----- 1960-1961

President Walt Hicklin
 Vice-President Eddie Leslie
 Secretary Leland Potter
 Treasurer Larry Porter
 Sergeant-at-Arms Jon Knehans
 Sponsor Volney Ashford



STANDING: John Sikora, Jim Helm, Jay Heil, Steve Martin, Walt Housman, Chuck Stevens, Stan Wojcik, Mickey McLellan, Dennis Freyling, R. C. Shipley, Larry Norton, Everett Rehkop.
 SEATED: Chuck Heegn, Bob Stuart, Mel Rogers, Ed Leslie, Walt Hicklin, Leland Potter, Ron Durns, Larry Porter.

Events

Events and activities of the V-Club can be seen throughout the year. Especially well-known to the campus is the V-Club Dance in the spring when the Mr. Viking for the year is presented to the students. Mr. Viking is an outstanding member of the Varsity Club, who has contributed to the college an achievement in sports and in scholastics. This year the candidates were Walt Hicklin, Ed Leslie, and Mel Rogers. As a money-raising project the group has the concession stand at the basketball games. A high school track meet is sponsored for all of the area high schools in the spring and the objectives of the V-Club are further displayed. Twice a year the V-Club holds an initiation for eligible athletics. Ending the school year, the men of the V-Club and their dates meet in the park for the annual V-Club Barbeque.

V-Club



STANDING: Left To Right, Dahl Tibbetts, Dave Walker, Dudley McGlynn, Stewart Kenrick. SEATED: Dwain Hall, Lee Johnson, Gary Hunt, John Ibarra.

LEE TAYLOR

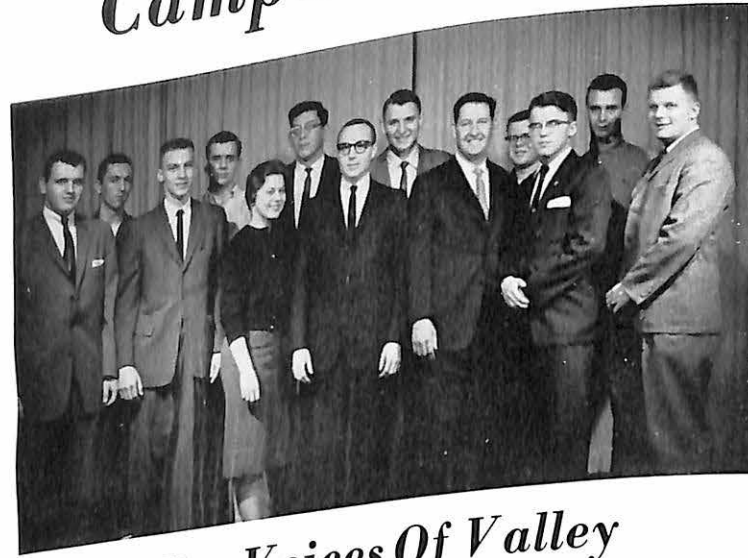


THE KEEPER OF THE KEYS

The safekeeper of our campus for the past two years works every night during the summer as well as during the school term. He is the silent person you might see at 10:30 P.M. in MacDonald Hall where he secures the building for the night, or you might also see him about midnight during the summer overlooking the campus to see that everything is alright.

He is a senior student who lives in the Valley Forge Apartments and is a transfer from the North Dakota School of Forestry at Bottineau, North Dakota.

WMVC Campus Radio



The Voices Of Valley

LEFT TO RIGHT: Cousin Steve R. Rydgig, Bill Blanton, Gene Okeson, Cal Ehrmann, Miss WMVC, Preacher Bob Ewens, Eddard BQ Stolze, Norman Neher, Klondike Jim Finnerty, Al Yeh Cooper, Daddy Ryan, Bill Cross, Phil Macauley.



OUR ILLUSTRIOUS LEADER
Mr. Jerald Cunningham

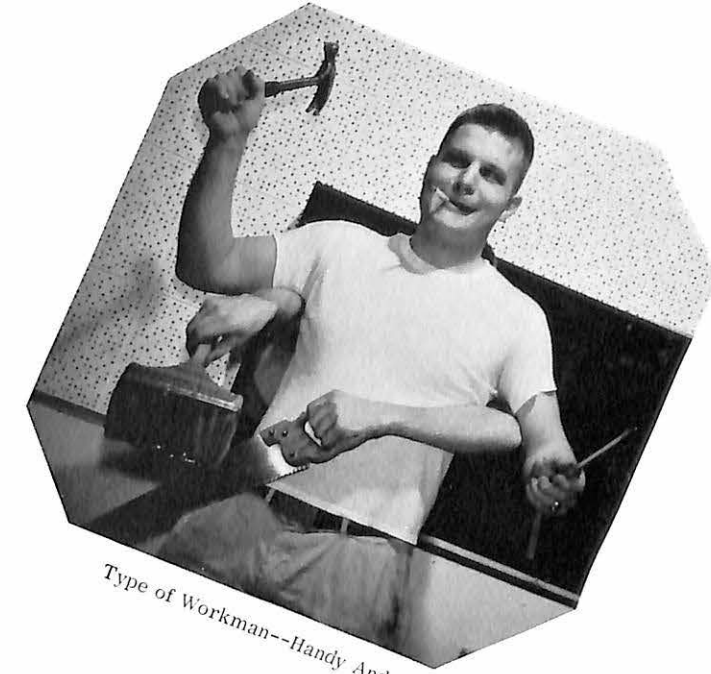


WMVC Staff

LEFT TO RIGHT: Paul Ryan, Program Director; Phil Macauley, Business Manager; Rem Schuyler, Station Manager, Engineer; Gene Okeson, Treasurer; Norman Neher, Record Librarian.



Material and MONEY



Type of Workman--Handy Andy



Reconstruction

Modernizing

Labors Nearing Completion

A Little Crowded But Still On The Air

and

Some of That Midnight Oil



Always on the go, WMVC now brings the Valley campus 60 hours weekly of music, news and Viking Views. WMVC has recently undergone extensive remodeling of the studio and revamping of the equipment, the object being complete campus coverage. WMVC is managed and operated by students in the radio workshop program. Thru WMVC, these students have the opportunity to learn radio practices and techniques.





SALLY WILSON
President



DIANE BARTHEL
Vice-President



DIANA VAIL
Recording Secretary

Alpha



MRS. McANINCH
Faculty Sponsor



BARBARA MILORADOVICH
Membership Chairman

LINDA ANDERSON
Treasurer

DOROTHY THOMAS
Corresponding Secretary

GLORIA WAGLEY



KAY LYNNE BORDEN



PAT CLARK



CAROLYN SANDER

SHIRLEYANN DALLWITZ

Xi Delta

I love the rose of Alpha Xi,
I love the pledge you gave to me,
I love your gold, your true double blue,
I love the noble things you do.



JUDY MORGAN



RITVA HALINEN



BARBARA VAN SICKLE



LYNN GURLEY



RUTH ANN ROE



MARY MOORE



KAREN MILNES



CAROL JENSEN



SANDRA KNAPICK



JANICE HENDRICKS



DORIS BORGELT

DONNA PAYNE



LINDA BRYAN



SHARON ROBERTS

DONA SHARPE



ANN PLACE

I'd love to linger here always
Until the end of life's sweet days.
First in my heart you ever shall be
For I love you, my Alpha Xi.



PEGGY CASE

MARCIA BYWATERS

SUSAN PLACE

SUZANNE COOKE

SANDRA ALBIN





Work, play and service for all active Alpha Xi Deltas.

Work

Pledges work, too!



Work! Work! In remodeling the sorority room in September.



Play



Play--on a lazy Saturday.

Service



Play and work--combined for a Homecoming float.

Service--at Christmas with the annual candle lighting ceremony.





Gamma Gamma Chapter Of Delta Zeta Sorority

A lamp of gold with four pearls and a diamond and a pink Killarney rose -- symbols of the bond of sisterhood which unites the members of the Delta Zeta Sorority.

Looking back over the events of the year we feel it has been a very enjoyable and rewarding year for Gamma Gamma Chapter. Two girls were elected to Cap and Gown and to Senior Honor Privileges and one Football Homecoming Queen, and Sandra Moore was also chosen as campus royalty. Marilyn Saddler was elected attendant to the Sabiduria Queen. Valdina Fink was selected as a candidate for May Queen and Mary Bulley and Marlene Kruse were nominated as senior and freshman class queens respectively.

At our annual CORONATION BALL, Barbara Maitland was crowned the new President of Gamma Gamma for the year 1961-62. Other officers honored were:

Marilyn Saddler	First Vice-President
Lynne Doane	Second Vice-President
Judy Romph	Recording Secretary
Valdina Fink	Corresponding Secretary
Ann Neuenschwander	Treasurer
Marcia Vorhis	Historian

As the 1960-61 year draws to a close we can look upon the activities of the chapter as a whole and its members individually with pride and pleasure.

The Delta Zeta Creed

TO THE WORLD,
I promise temperance and insight and courage,
To crusade for justice,
To seek the truth and defend it always,

TO THOSE WHOM MY LIFE MAY TOUCH
IN SLIGHT MEASURE,
May I give graciously
Of what is mine,

TO MY FRIENDS,
Understanding and appreciation,

TO THOSE CLOSER ONES,
Love that is ever steadfast,

TO MY MIND,
Growth

TO MYSELF,
Faith
That I may walk truly
In the light of the Flame.



Before Rejuvenation



Barbara gets crowned!



SUE HECKART
Treasurer

JENNIE DUGGINS
1st Vice-President

SANDRA MOORE
2nd Vice-President

JEAN HICKS
Historian

SUSIE SLEAD

MARILYN SADDLER

DORIS CALDWELL



MARY BULLEY
President

JUDY ROMPH

ANN NEUENSCHWANDER

MARY LEIGHTON



SUZANNE MARSHALL
Recording Secretary

JOYCE RENALS
Corresponding Secretary

JANET McCRAE
Panhellenic Delegate



VALDINA FINK

PAT HAYS



MRS. JOSEPHINE REED



LYNNE DOANE

BARBARA MAITLAND



LANETTE DESCHANE



MARCIA VORHIS



CLAUDIA HEADEN



NINA BOND



JUDY SIEVERS



JANE ANN WARREN



KAREN WOODS



NANCY DELANEY



MARY KAYE ALEXANDER



LINDA ELSEA



DOROTHY TWILLING



MARILYN HARRELL



What can we say??



Laugh it up, Santa!



Six of one, half dozen of the other.



Here comes the trophy case!



Prize Scholar!

Bottoms up!

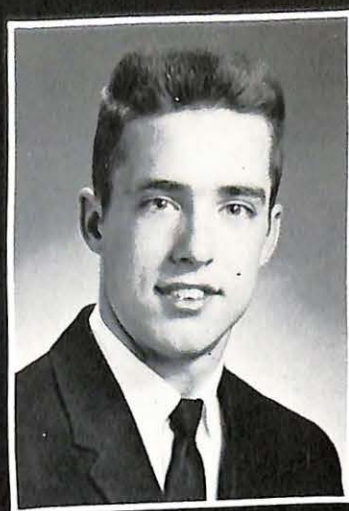




P. MacNICHOLS



D. KING



W. WEINREICH



R. SLEAD



W. McLAUGHLIN



J. SPOHNHOLTZ



E. GETTINGER



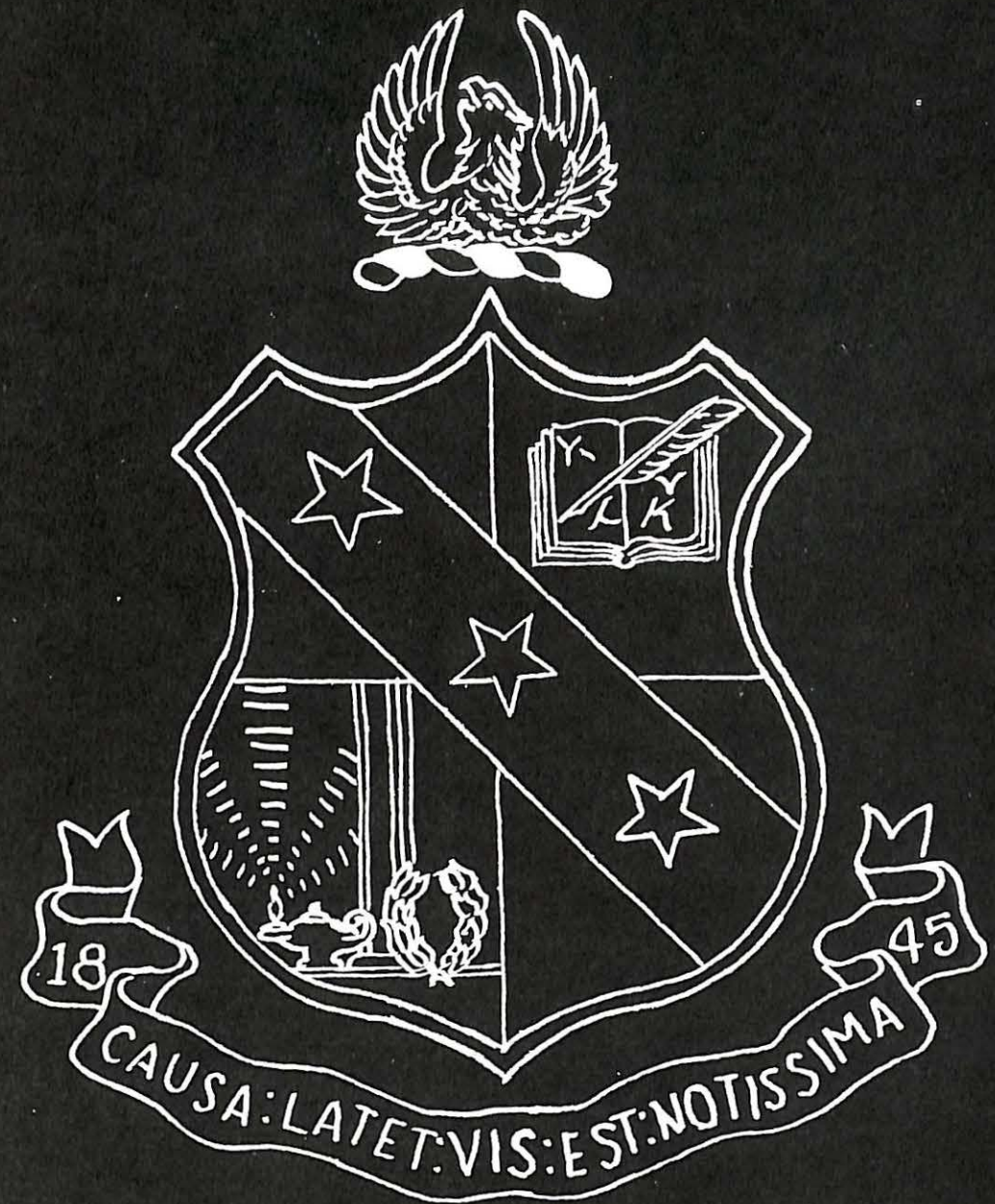
J. WILSON



J. KRAMER



E. HARRIS



AΣΦ



R. THEIS



J. ORVIS



D. BLAKENEY



D. FERRIL



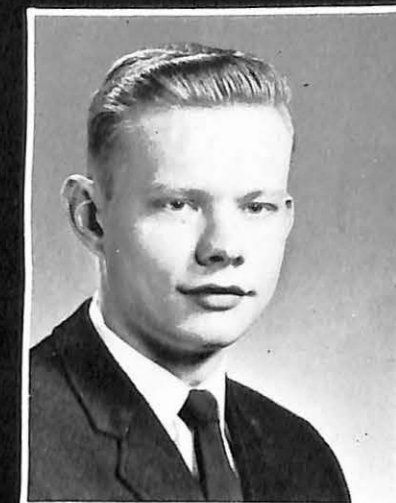
R. KRISTOFFERSON



G. MEDARIS



T. EPPLE



T. CURRY



W. GRAHN

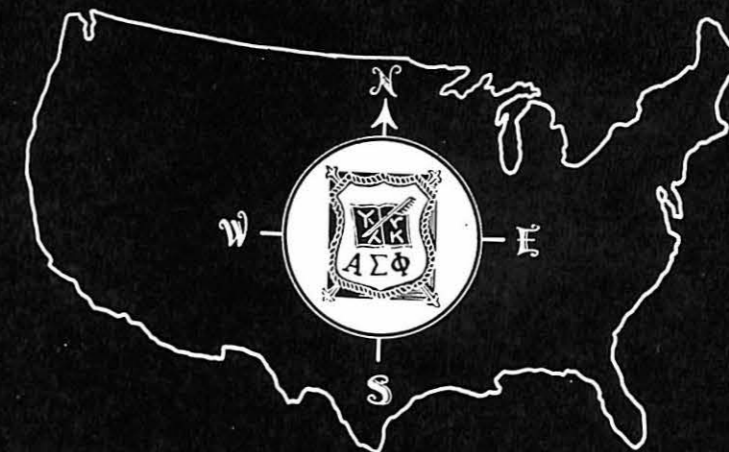
- NOT PICTURED
1. D. KELLER
 2. S. MILLER
 3. J. HUNBORG
 4. J. HAYES
 5. C. MAHER
 6. T. WRIGHT
 7. D. WYATT
 8. T. SLOAN
 9. J. LICHTENBERG
 10. R. HENRY
 11. R. BRINK
 12. R. ADAMS



L. MOELANDER



D. CHAMBERS



J. HILTON



C. MOHR



C. ESPELAND



R. HALEY



T. ARNOTE



R. BUTLER



F. BERTRAM



D. SCOTT



W. ULERY

Alpha Sig Activities



D. KRENTLER



J. SCHAEFER



J. COBURN



G. BURRIS



A. SPECHT

NOT PICTURED

1. R. MITCHUM
2. J. SHARP
3. F. HERNANDEZ
4. J. ROGERS
5. G. CLEMENS
6. J. REDSTROM
7. J. HOOD
8. H. ANTHES
9. D. KAPPELMAN
10. L. KOCH
11. S. KUHN
12. D. LEEDY



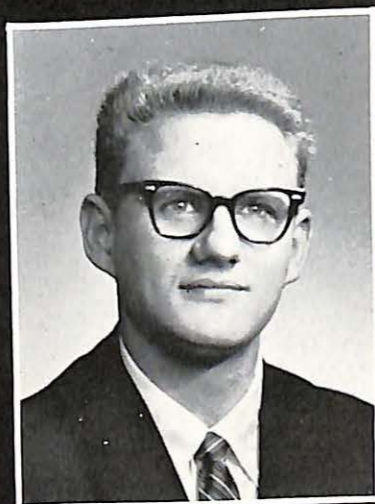
W. FOSTER



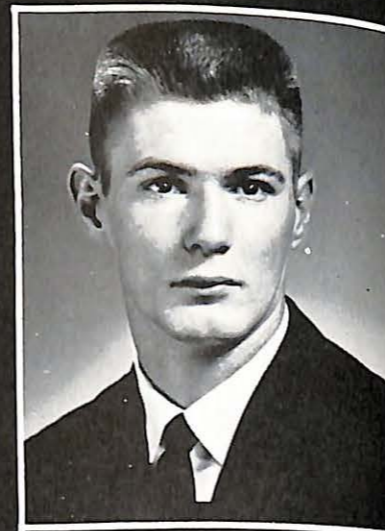
E. ALDERSON



D. SHAW



C. MITCHELL



A. HOBBS



Don't they use it to knock down castle walls?



Construction begins on the house decoration.



Dancing at the Homestead Party.



Dad's Day celebration at the Wings.



Summit Meeting at the Homestead



"For whom the bell tolls?"



Mrs. D. Duggins, Mrs. J. H. Stellwagen, Mrs. W. Weinreich II, and Mrs. G. Redford, the officers of the Alpha Sigma Phi Mothers' Club.



Alpha Omicron Chapter's recent acquisitions.



DR. J. H. STELLWAGEN, Advisor

Dedication

We, the men of Alpha Omicron of Alpha Sigma Phi Fraternity, dedicate this, our section of the Sabiduria, in the honor of Dr. J. H. Stellwagen, linguistics professor of Missouri Valley College, who serves our chapter as its advisor. "Dr. Jack," as he is affectionately known to us, has been our advisor and friend for the past eleven years, during which time he has benefited our organization through his many capacities.

Miss Sally Jane Wilson, the 1960 Alpha Sigma Phi Sweetheart of the Black and White Formal Dance, and Brother J. R. Campbell.



The Alpha Sig Traveling Pep Band.



Second place House Decoration.

Alpha Sig's first place float for the 1960 Homecoming.



Doorway to an evening of pleasure at the Annual Homestead Party.



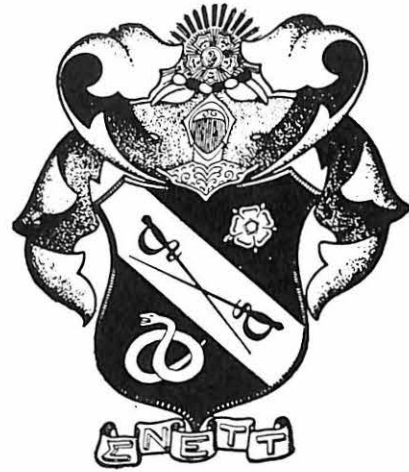
Spring Semester Pledge Class 1961.



Fall Semester Pledge Class 1960-1961.



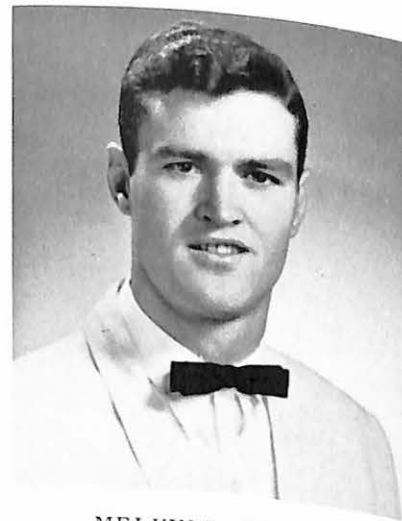
M. L. DOUGHTY
Advisor



*Beta Gamma Chapter
of
Sigma Nu Fraternity*



RICHARD A. BUEKER
Commander



MELVIN L. ROGERS
Lt. Commander

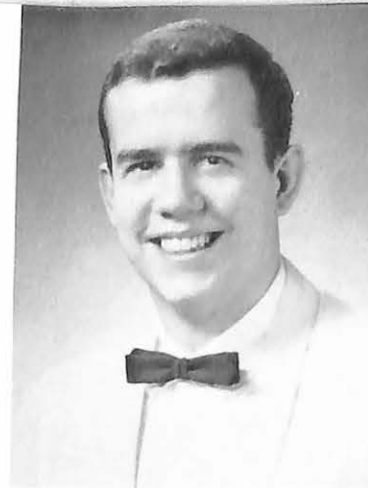


GARY W. HOVIS

ROBERT E. WOODSMALL



ART E. KNUEPPE



CALDER D. EHRMANN

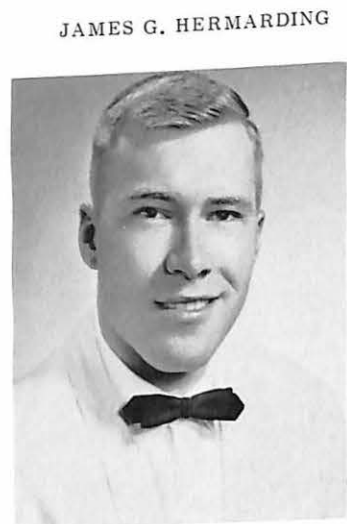


DENSEL B. WOODSMALL

To Believe In The Life Of Love, To Walk
In The Way Of Honor, To Serve In The Light
Of Truth--this is the Life, the Way, and Light
of Sigma Nu--this is the Creed of our Fra-
ternity.



JAMES HELM

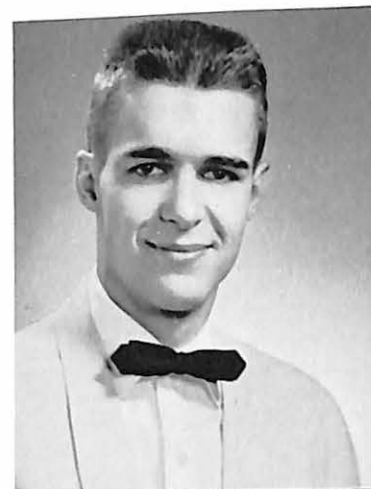


JAMES G. HERMARDING

JAMES GILCHREST



ROBERT L. HUBNER



VAN EDWARD SCOTT



DONALD BELL



DONALD G. KALTHOFF



ROBERT D. STUART



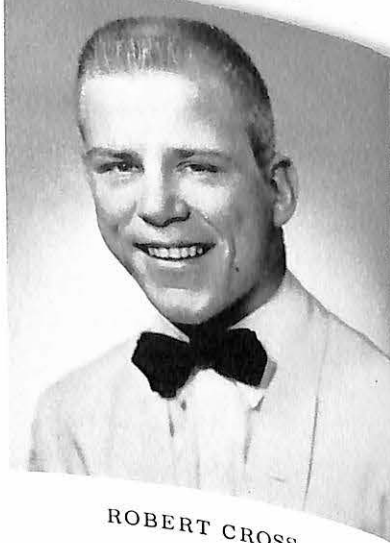
WAYNE HOWELL



THOSMAS E. HARTMAN



RAYMOND STECINA



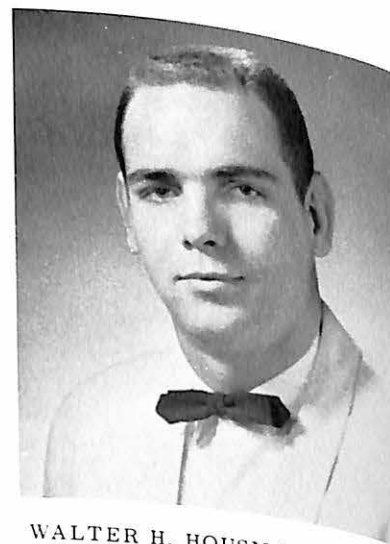
ROBERT CROSS



JAMES CAHILL



PETER CHRISTODOULOU



WALTER H. HOUSMAN, JR.

Founded in 1869 at the Virginia Military Institute, Sigma Nu was early known as "The Legion of Honor." The principles of the Knights of the Legion of Honor soon spread to other colleges and universities and eventually the Legion became known as Sigma Nu.

The purpose of Sigma Nu is to build character which is accomplished by placing an emphasis on scholarship and fellowship. Sigma Nu tries to prepare men for life after college by creating a high sense of honor and a love for fellowman. The fraternity is dedicated to the function of providing wholesome, helpful and stimulating fellowship for its members.

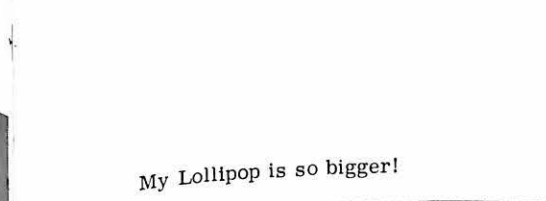
Beta Gamma Chapter of Sigma Nu was founded at Missouri Valley College in 1891. Soon after being founded, it was necessary for the chapter to go subrosa, but in 1931 the chapter again became active. Through the years, Beta Gamma Chapter has built a high reputation by preserving the principles of Sigma Nu.



Work, Mr. Freeark, Work



Hi Doris!



My Lollipop is so bigger!



Who's There!



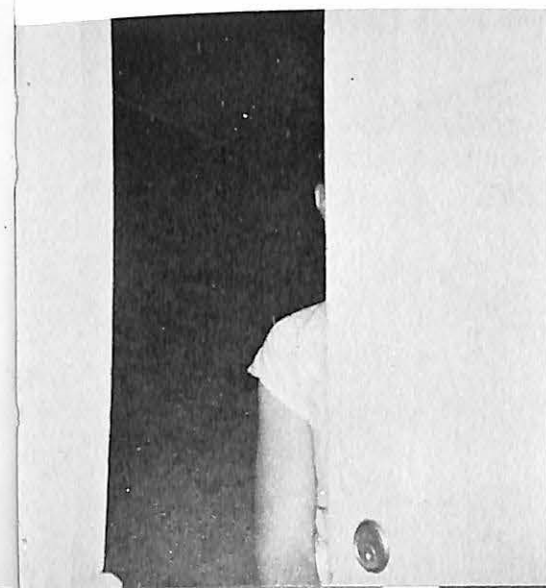
Sigma Nu's Never Die
They Just Fade Away



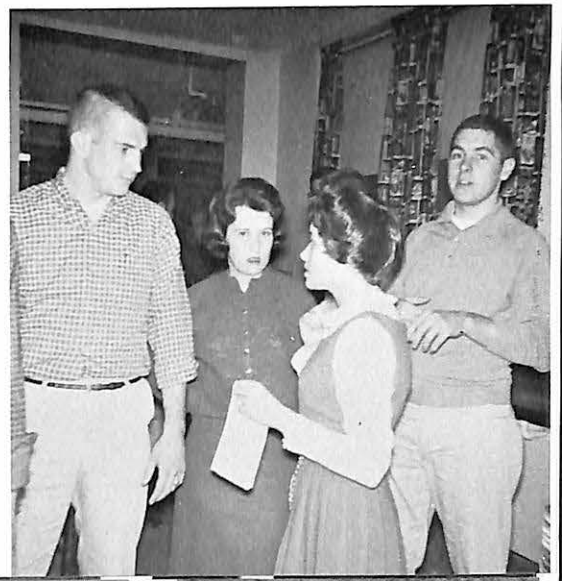
Who ME?



The Pledges at Work?



Duh!



Tau Kappa Epsilon Fraternity



SCOTT McCULLOCH
Histor



DAVE WALKER
Hypophetes



PAUL WECHTER
Grammateus



JIM LINSIN
Prytanis



DON MOCKER
Epiptytanis

LEE STIEGER
Crysophylos

JIM KEITH
Pylortes

KEN JAGODITSCH
Hegemon



Miss Linda Cohn
Joke Sweetheart 1961



BERT BOWEN



BUD CHRISMAN



JOHN ALIBERTO



GEORGE HILES



TOM DYKSTRA



BOB BERLEMANN



DAVE WELLS



GORDON ZION



JOHN GRUNIK



JOHN McMULLEN



BILL COFFEE



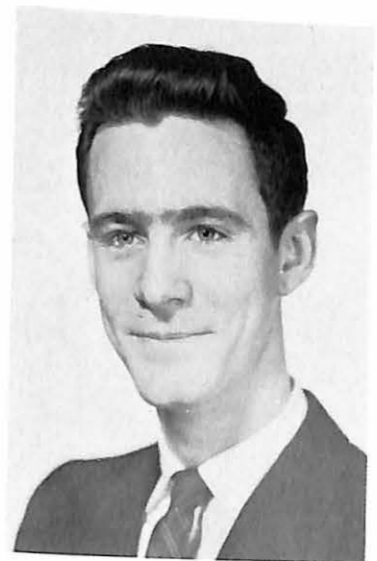
RUSS WASSON



ED STOLZE



CHUCK HEEGN



STAN JONES



PHIL SIMS



JIM SMITH



JOHN HAYNER



MIKE BARLOW



DAVE PARKHURST



DENNIS STLOUKAL



JIM MALLORY



JOHN ROOS



RON BERG



CHUCK DURNETT



SKIP UHLEMANN



DON PLUMMER

Valley's youngest fraternity, Tau Kappa Epsilon, completed another successful year with its contributions to leadership, scholarship, and brotherhood. Teke, still the largest international fraternity, has demonstrated tremendous strides on campus since its institution here in 1953. Growth is seen not only in membership, but also in personal character, tradition, integration with the college community.

Certainly one aspect responsible for the success of Delta Upsilon Chapter this year has been the development of the Order of Diana under the capable leadership of Mrs. Glenn Penny, wife of our Associate Chapter Adviser. Along with the growth of the chapter has been the growth of our Board of Control. Mr. Price Bywaters has again served as its president, and Mr. William Elder has been elected to a position on the board.

Valley Tekes were pleased to hear that they had again received the Homecoming trophy for best house decoration. At Christmas, the chapter honored the faculty at a gala holiday dance. Other novel activities which sported the social calendar were "Autumn Leaves," "Winterlude," "Teknik," "Roman Toga Party," the Ozark Weekend, and the traditional Red Carnation Ball. Last year's chapter Sweetheart, Miss Carolyn Barr, was chosen November Sweetheart for the Court of the International Sweetheart.

Tau Kappa Epsilon was again well represented in campus-wide activities. The men of Delta Upsilon shouldered responsibilities in student government, class positions, and organizations, besides the maintenance of the chapter.

Frater Jim Linsin represented the fraternity objectives to the finest degree as he was cited a recipient of the coveted Who's Who recognition.

Although several fraters leave the "low rambling ranch house" this year, a precedent has been established that will for many years to come guide the men of Tau Kappa Epsilon.



Asbestos Sidewalks?



The Rambling Ranchhouse



Pledge Recreation



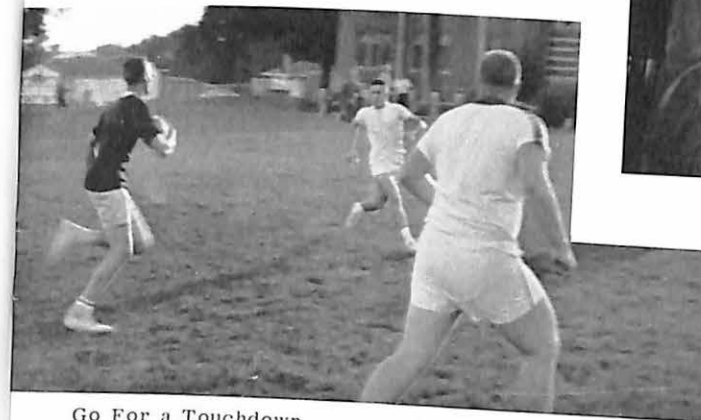
Pity the Poor Nail



First Place House Decoration



Thanks!



Go For a Touchdown

Salvage From the River



Hello Dr. Collins
Fifth Flat?



They Won't Steal
It This Time

Simms to be Easy



Independent Men Of Young Hall



Young Hall Officers And Housemother

LEFT TO RIGHT: Ed Leslie, President; Everett Rehkop, Treasurer; Mrs. Napton, Housemother; Walt Hicklin, Vice President.

Foreign Students

STANDING: Left To Right, Henry Kim, Mikio Kamimura, Sue Takahashi, Ritva Halinen, Frank Toth, Chang Koo Lee.



Independent Men Of Young Hall



SEATED: Left To Right, James Edmundson, Tom White, Ron Durns, Lloyd Swift, Henry Kim.

STANDING: Lee Joanson, Frank Meenach, John Clement, Bill Williams.



STANDING: Left To Right, John Stenstrom, Tom Lappin, Dick Scott, Len Simmer, John Mallenski, Butch Clark, Bob Mitchum. SEATED: Phil Kransberg,

John Sikora, Dudley McGlynn, John Ibarra, Steve Martin, Sam Georgeff.



SEATED: Left To Right, Larry Porter, Don Peebles, George Craddock, Mike Murphy, Tau Smither.
 STANDING: Wendell Shildmyer, Jay Heil, Terry Sinsky, Donald Duncan, Bill Savage.

STANDING: Left To Right, Bert Fenton, Mikio Kamimura, Ray Daly, Dave Woodman, Tom Butterfield, Jack Gordon, Nick Pennington, DeRalf Stinson, Alfred Lichtenberg.
 SEATED: Francis Roberts, Robert Channes, Gary Mirts, Bob Sedlacek, Gerald Rutledge.



STANDING: Left To Right, Dean Zetmeir, Gary Gardner, Harold Whittlessey.
 SEATED: Gar Benson, Bill Sutherland, Jerry Miller, Joe Kennedy.

STANDING: Left To Right, Delford Thompson, R. Norton, Marvin Eisenhauer, Stewart Kenrick, Dale Carson, Clyde Shipley, Leland Potter, Everett Rehkop, Walt Hicklin, Ed Leslie.
 SEATED: Denny Freyling, Larry





2 A
Diana and Dale Burrough



6 A
Gaylen, Floyd, Grant, and Edna Wynn



Tom, Pat, and Tommy Belzey



3 D
Lee, Jo Ann, and Helen Taylor



3 C
Bill, Mike, and Carol Lubensky



7 D
Marylon, George, and Ronnie Portor



3 A
Dave and Pat Krentler



Allan and Janet Richie



2 B
Jim and Ann Camp

2 D
Linda and Ron Walters



1 D
Marilon, Bonnie, and Larry Smith



Verna Sue and Gene Francis



5 A
Don, Ann, and Mike Wilson

5 C
Gene, Mary Francis, and Danny Howard



NOT PICTURED

- 6 D Bill and Mary Cross
- 7 A John and Nancy Aliberto
- 7 B Mel and Jane Nordentoft
- 5 B Bruce, Leslie, Bruce Jr. and Randy Peebles



LEFT TO RIGHT: Mike Ballard, Frank Pellegrine, Bob Schafer, Dick Sherpenisse, Donald Hansen.



Activities

There are still only twenty-four hours in every day, but some find that eating, sleeping, studying, matriculating, socializing, and miscellaneous incidentals do not quite fill it. Most activities take the form of committees, planning for dances, Homecomings, Plays, and other campus activities. Some people actually need activities as a relief from routine class schedules. The planning and doing with others is perhaps more rewarding than the actual work. The prime purpose of the college may be the education of its students, but often more time is devoted to activities than scholastic pursuits. But as is often said that as much as men need vocation, they need diversion. A routine life, without occasional deviation from the "daily grind," would reduce man to a dull creature, nearly a machine.



MARILYN



SADDLER



PAT CLARK



SANDRA MOORE



JERRY HILTON

DIANA VAIL



Alpha Sigma Phi's First Place Prize Winning Float

Football Homecoming 1960

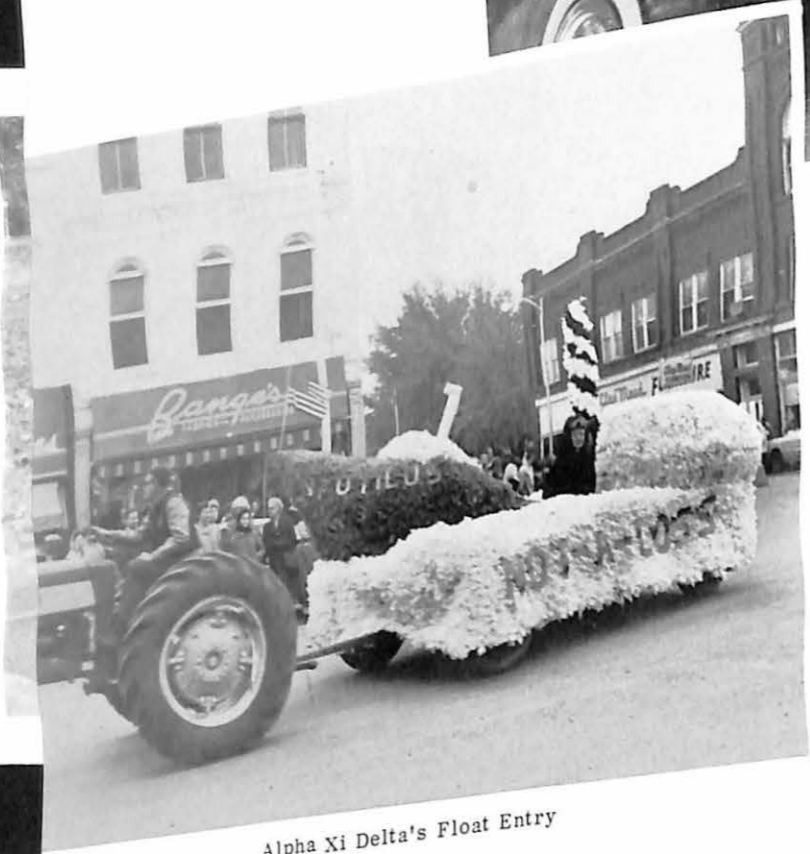
Gray mist and chilliness provided the atmosphere as students worked until the early dawn hours of Homecoming Day to put finishing touches on their floats and house decorations for the day. The parade viewed by many town residents and parents of students' twisted its way through the streets of Marshall and back to the football field. The Homecoming Game against Graceland helped to raise the dampened spirits with a victory by the Vikings of 26 to 6. During the morning hours and early afternoon, open House was held in the small recreation room of MacDonald Hall for parents and Alumnae of the college. This event, initiated this year was sponsored by the members of the Panhellenic Council. In the evening an Alumni Banquet was prepared in the Dining hall. "The Bewitching Ball" held that evening was a huge success. The couples attending the dance, danced to the music of Larry Phillips and his Band. During intermission ceremonies Miss Marilyn Saddler was crowned 1960 Homecoming Queen by the 1959 Homecoming Queen Mrs. Locke Dame Davoli.



Cheerleaders and Clowns



Presentation To The Town



Alpha Xi Delta's Float Entry



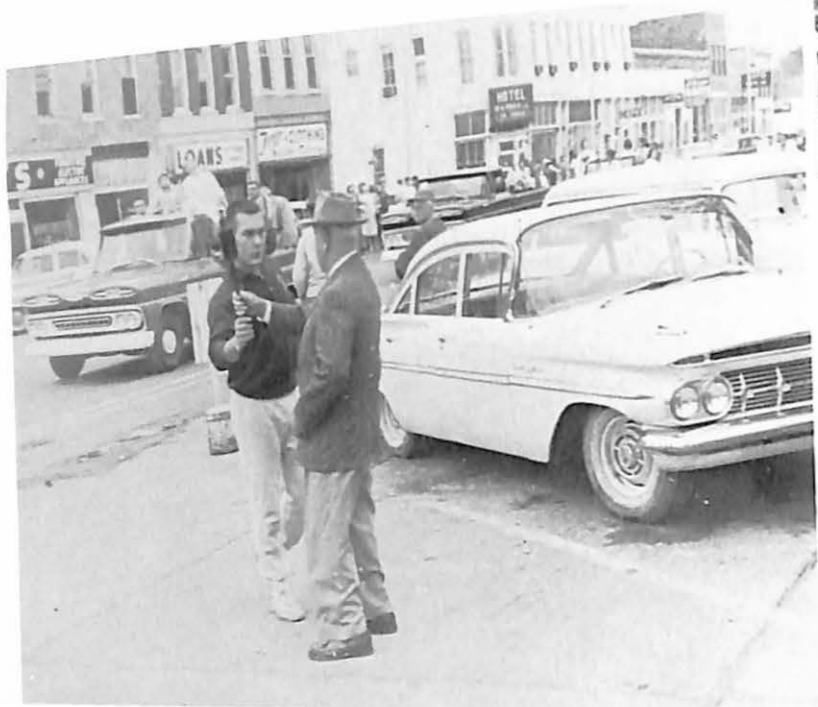
Sigma Nu's Float Entry



Leading The Parade



Valley Cheerleaders



Pop Ferguson Carries the Torch



Valley's TKE'S

Pep Club



STANDING: Left To Right, Carol Jensen, Barbara Miloradovich, Gloria Wagley, June Hunt, Helen Rensch, Dona Sharpe, Karen Otwell, Mary Kay Alexander. KNEELING: Sue Cooke, Lynn Gurley, Pat Clark.

Valley Viking



Pep Band



LEFT TO RIGHT: Frank Meenack, Jerry Max Hilton, Dave Krentler, Dave Farrell, Ike Mitchell, Don Chambers.

Valley Cheerleaders



CANDY HARDAWAY



SUE COOKE



SHARON ROBERTS



PAT CLARK



LINDA BRYAN

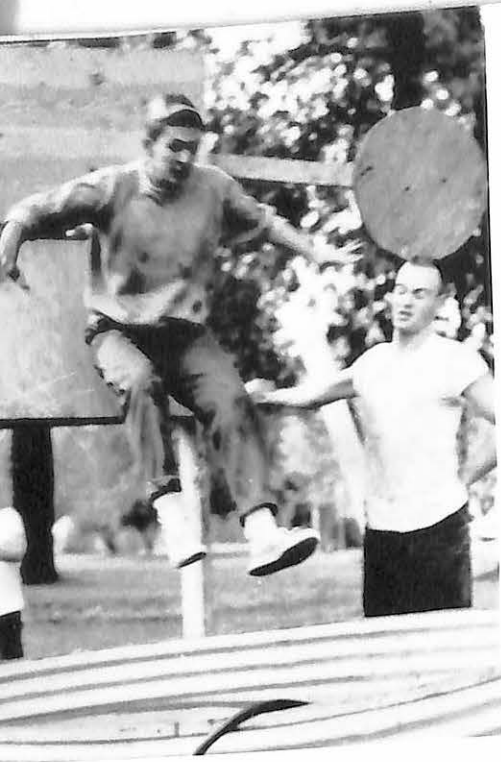


LYNN GURLEY



BETTY CARSON

BARBARA CARSON



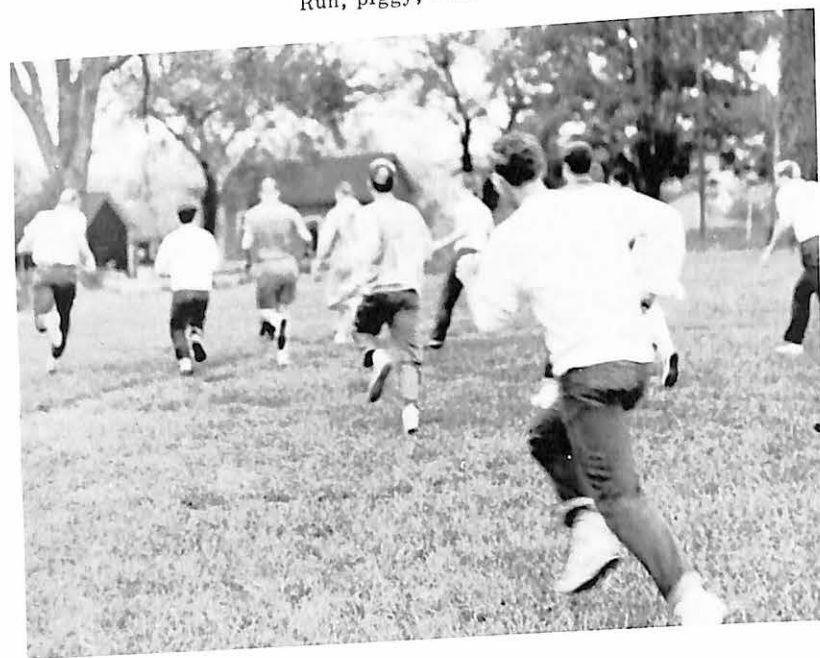
Dunk 'em!

**S
P
R
E
E

D
A
Y**



Whoever heard of a greased pig!



Run, piggy, run!

Proud Captors



Caught!



Basketball Dance

Basketball Sweetheart Linda Bryan
 Attendant Lynn Gurley
 Attendant Marilyn Feldman



Sabiduria Dance

Sabiduria Queen Sally Wilson
 Attendant Mary Bulley
 Attendant Sandra Moore



"Auntie Mame"

by Jerome Lawrence and Robert E. Lee

Directed by Claudia Headen



CAST

Norah Muldoon	Virginia Duggins
Patrick Dennis	Robert Fox
Ito	Jim Orvis
Girls	Barbara Van Sickle
	Diana Vail
Ralph Devine	Richard Anderson
Vera Charles	Virginia Barnds
Mame Dennis	Karen Mott
Bishop Eleftharosees	Donald Chambers
Boy	Pete Mac Nichols
M. Lindsay Woolsey	Scott McCulloch
Mr. Babcock	Richard Johnson
Beauregard Jackson	
Pickett Burnside	Phil Mac Cauley
Mr. Loomis	Robert Mitchum
Shopper	Mary Moore

Valley Players

present



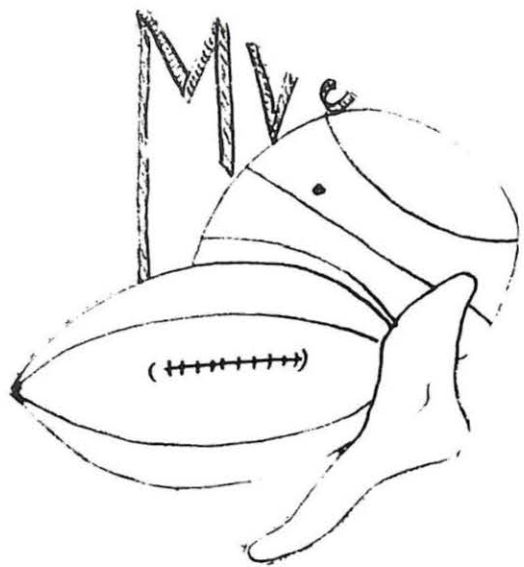
"Bell, Book and Candle"

by John van Druten

THE CAST

Gillian Holroyd	Shirleyann Dallwitz
Shepherd Henderson	Jim Linsin
Miss Holroyd	Karen Mott
Nicky Holroyd	Gordon Zion
Sidney Redlitch	Eugene Winkler
Pyewacket	Kitty-Cat





Sports

There is a deep human drive in men to match their fellow in contest. Each participant has his reasons for playing the game. Not ability alone, nor the exhilarating feeling of triumph nor roaring acclaim; but something intangible drives the athlete into competition. The courage and dedication that foster wholehearted, if sometimes futile, effort and sustain him through punishing practices are basic qualities, but the athlete has added gifts of deep desire and pure love of sport. Stadiums and fieldhouses everywhere resound to the spark of college athletics the do-or-die spirit, the upset, the bitter defeat; all vividly demonstrate the typically American ideals of fair play and sportsmanship.





MISSOURI VALLEY COLLEGE VIKINGS
1960-61

FIRST ROW: Left To Right, Student Coach, Allen Ritchie; Chuck Stephens, Jay Heil, John Sikora, Jim Meek, Ron Durns, Don Kalthoff and Ray Ricono, Co-Captains: Terry Wright, Walt Hicklin, Mickey McLellan, Larry Porter, Dennis Freyling, Coach Ashford, Johnny Ashford. SECOND ROW: Delford Thompson, Larry Worms, Carl Long, Gene Cope, Gary DeLouis, Jim Helm, Steve Martin, Harry Bradley, Stan Wojik, Walt Housman, Rich Sherman, Larry Norton, Dahl Tibbetts, Tom Butterfield, Marv Eisenhauer, Waid Smith.

Manager Ed Leslie. THIRD ROW: Bill Sutherland, Jim York, Frank Loeffler, Fred Fugazzi, Bili Chambers, Dick Scott, Denny Klingbell, Danny Garrett, G. C. Jones, Wayne Howell, Richard Yokley, Dick Rammey, Joe Avena, Steve Rydgig. FOURTH ROW: Dwaine Hall, Bob Cross, Jim Hargrave, Ron Adams, Tom Marshall, Gary Hunt, Tom Wright, John Ibarra, Bob Kline, Ray Stecina, Ronnie Porter, Porter Baldwin, Harold Whittlesey, Bill Savage.

Coach Volney Ashford, Co-captains Ray Ricono and Don Kalthoffm and Student Coach Alan Ritchie.



1960 FOOTBALL RESULTS

Team Played	MVC.	OPP.
Northwestern Okla. State	27	14
Hillsdale College	13	42
Southwest Missouri State	29	0
William Penn College	40	14
Concordia Teachers College	35	21
William Jewell College	14	14
Graceland College	26	6
Tarkio College	37	0
Culver-Stockton	40	0



A highly successful season on the Valley gridiron for the past year may again be attributed to the outstanding ability, willingness to work for perfection, and a keen desire to win. Although the winning record was marred by a loss to a sizeable and more experienced squad from Hillsdale College, the Vikings showed great determination in striving to maintain the reputation which has held our school in high esteem for many years.

The single loss was far overshadowed by brilliant performances throughout the season. The M.C.A.U. championship rested again on the outcome of the traditional battle between the Cardinals of Wm. Jewell and our own "Vikings." The game ended in a 14-14 deadlock, which forced the two teams to share the conference crown.

Although a great deal of the glory in victory is given to the athletes on the field, we cannot overlook the many tasks performed by Coach Ashford and his very capable student assistant, Allan Ritchie.

With the loss of only six seniors, and with the surprisingly excellent performances of several young athletes, the Valley campus can look forward to possible recognition in national ratings in the future.



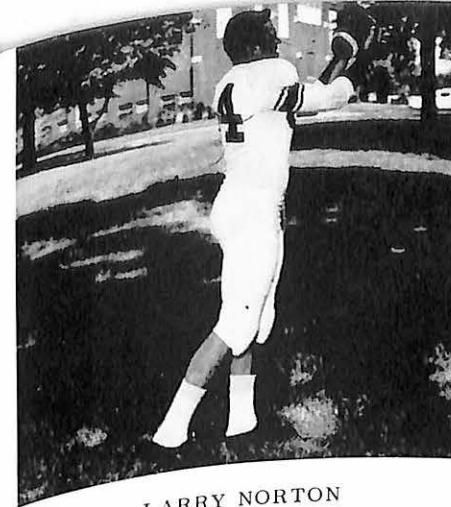
WALT HOUSMAN



WAITE SMITH



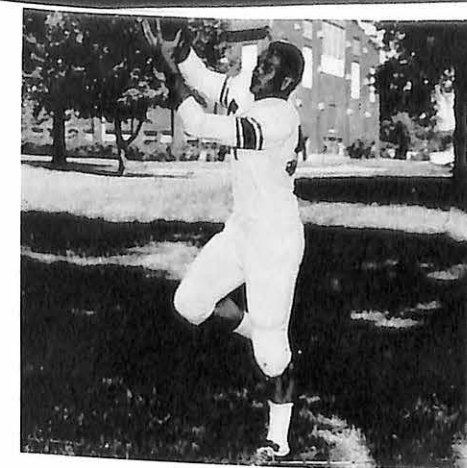
LARRY PORTER



LARRY NORTON



RON DURNS



DON KALTHOFF



WALT HICKLIN



RAY RICONO



MICKEY McLELLAN



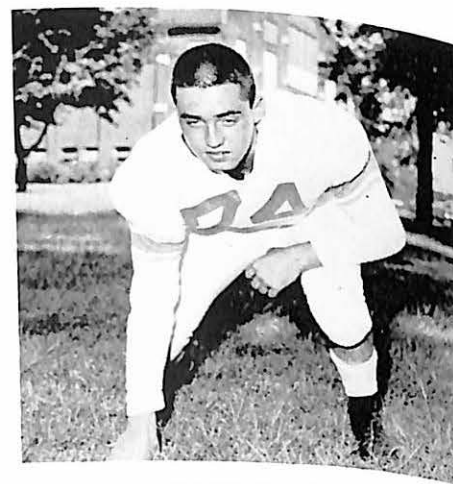
HARRY BRADLEY



JOHN SIKORA



LARRY WORMS



DAHL TIBBETS



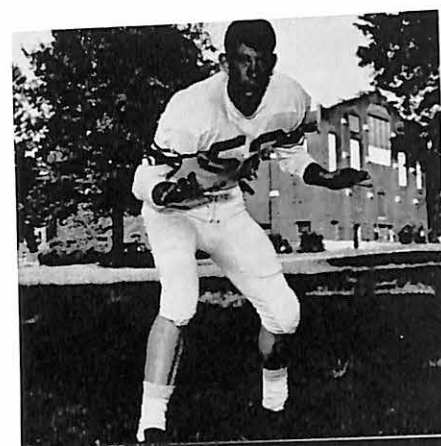
RICH SHERMAN



CHUCK STEPHENS



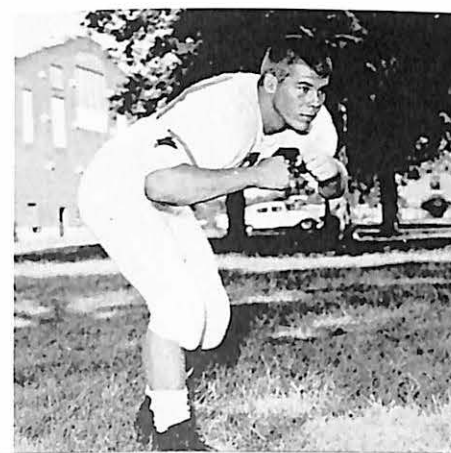
TERRY WRIGHT



TOM BUTTERFIELD



JIM MEEK



STEVE MARTIN



GARY DeLOUIS



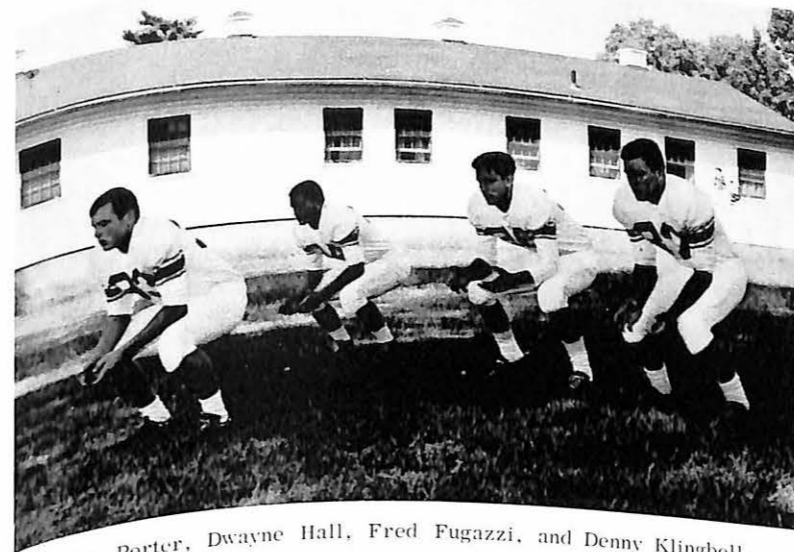
JIM HELM



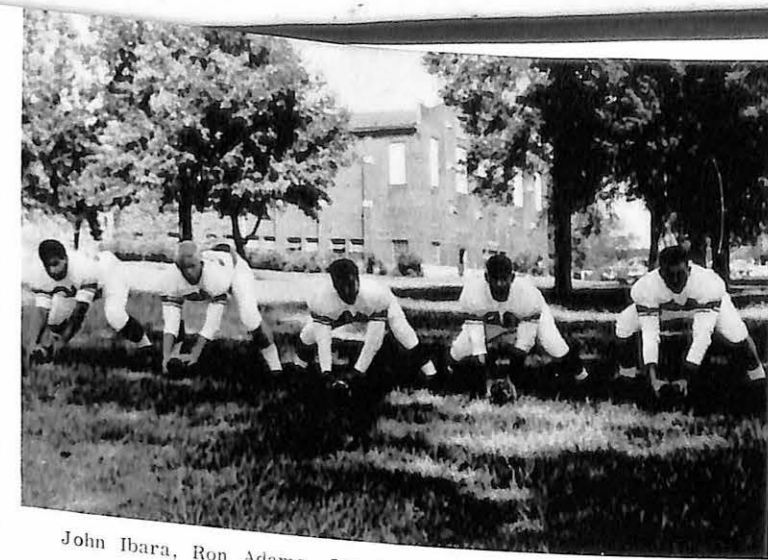
JAY HIEL



DENNIS FREYLING



Ron Porter, Dwayne Hall, Fred Fugazzi, and Denny Klingbell.



John Ibara, Ron Adams, Joe Avena, Jim York, and Dick Scott.



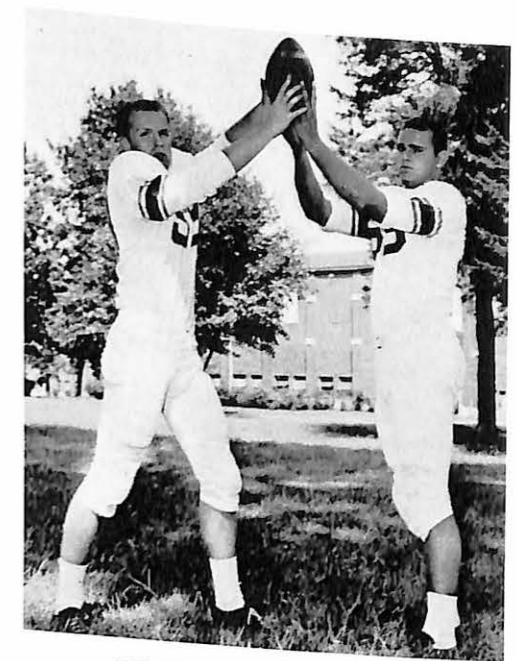
GENE COPE



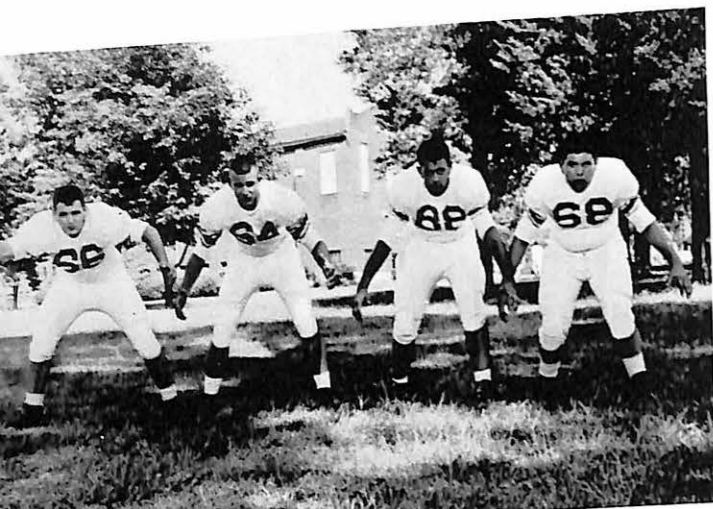
FRANK LOEFFLER



Bill Savage and Harold Whittlesey



Bill Chambers, and Dan Garrett



LEFT TO RIGHT: Steve Rydgig, Terry Sinsky, G.C. Jones, and Gary Kline.



LEFT TO RIGHT: Carl Long, Marv Eisenhauser, Ray Stecina, and Bob Cross.



Bill Sutherland, Bob Hargrove, and Tom Wright.



Richard Yokley, and Tom Marshall.

Valley to N.A.I.A.

The 1960-61 season for the basketball team proved highly successful and surprising to some of the close followers of Missouri Valley College. Although surprising to some people, it wasn't a surprise to the players. The season was one for which they had been waiting and working hard for in order to achieve the highest recognition possible. Although the "round-ballers" were forced to submit to second place in the M.C.A.U. conference they showed they were the true champions by defeating the first place Cardinals of William Jewell College in two of three games in the N.A.I.A. play-offs. With Valley winning the play-offs they were the team which was to represent the state of Missouri at the N.A.I.A. tournament in Kansas City. Upon their arrival in Kansas City they were greeted and treated as kings for the full time which they were there.

The Vikings defeated Maryland State Tuesday, March 14, 1961, the fifteenth seeded team in the tournament. Wednesday evening March 15, the Vikings faced the number 2 seeded team and lost, with their subsequent bow-out of the N.A.I.A. tournament. With the true Viking spirit the players showed their determination to win for Valley through the entire game and won the admiration of the large majority of the people filling the Kansas City Municipal Auditorium.

The team is fortunate not to lose more than one of their top five in the coming year, Leland Potter - a four year letterman from Mendon, Missouri. Leland, co-captain, led the Vikings both on and off the floor. He was truly an inspiration and sparkplug on many occasions. His leadership and playing ability will be sorely missed next year.

Returning are Dale Carson, John Kingsbury, Jon Knehans, and Evert Rehkop of the starting team and are ably backed up by Lloyd Swift, Sam Georgeff, Jim Edmundson, and Donnie Duncan. Kingsbury led the team in scoring this year and gained Honorable mention on the Little All-American team. As front court men were still have the important and efficient rebound men in the form of Jon Knehans and Evert Rehkop. Next year will be the last for Knehans and Rehkop and promises to be their best. Last but not least, we mention our returning co-captain, Dale Carson, who showed fine leadership and ability to keep complete control of the team and whom we are hoping will show our Vikings the road to the N.A.I.A. in the coming basketball season.



MISSOURI VALLEY BASKETBALL TEAM

STANDING: Left To Right, Coach Grover Redford, John Thompson, R. C. Shipley, Mel Rogers, Don Malter, Everett Rehkop, Jon Knehans, Leland Potter, Jim Edmundson, Larry Scheer, Bonham

Bibb, KNEELING: Manager, Bill Blanton, Dale Carson, Sam Georgeff, Spud Swift, Joe Avena, Don Duncan, John Kingsbury, Manager Bob Stewart.

Coach Grover Redford, Co-Captains, Leland Potter and Dale Carson.

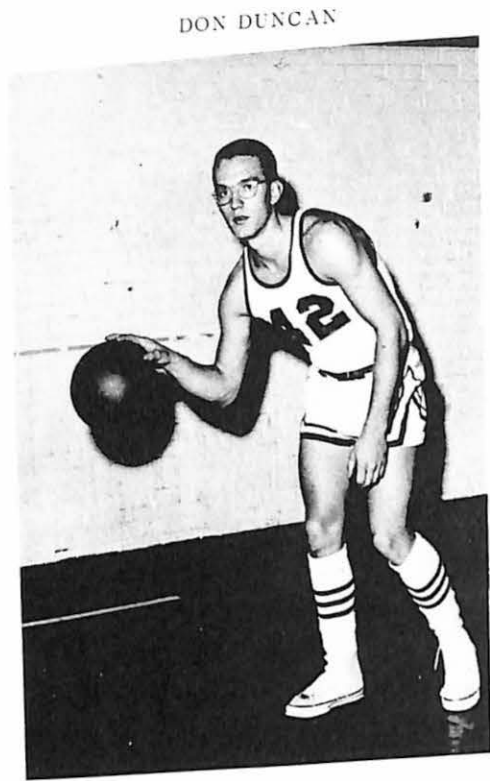


1960-'61 BASKETBALL RESULTS

Team Played	MVC.	OPP.
Baker University	78	66
National College	83	73
Southwest Mo. State	55	70
Kansas City Univ.	95	71
Kirkville State	65	85
Central College	77	60
Millikin University	70	86
Friends University	87	67
National College	85	72
Westminster College	82	72
Central College	99	78
Culver-Stockton College	77	64
Tarkio College	75	72
Graceland College	83	72
William Jewell	56	77
Culver-Stockton College	58	72
Drury College	66	55
Graceland College	86	78
Tarkio College	101	71
Drury College	57	66
William Jewell	89	93
Westminster College	98	82



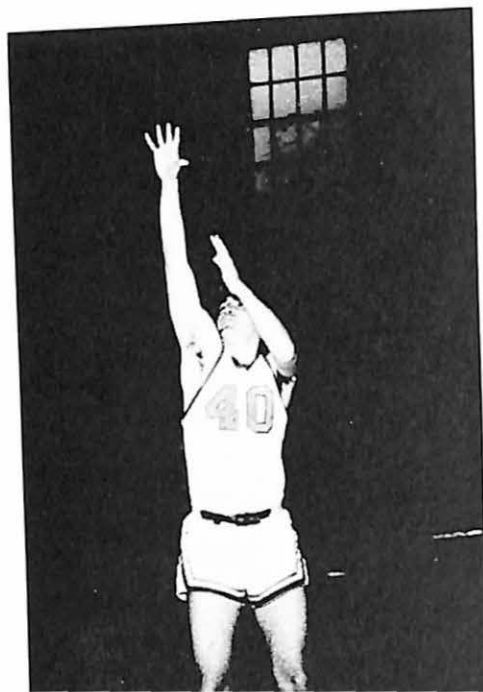
SAM GEORGEOFF



DON DUNCAN



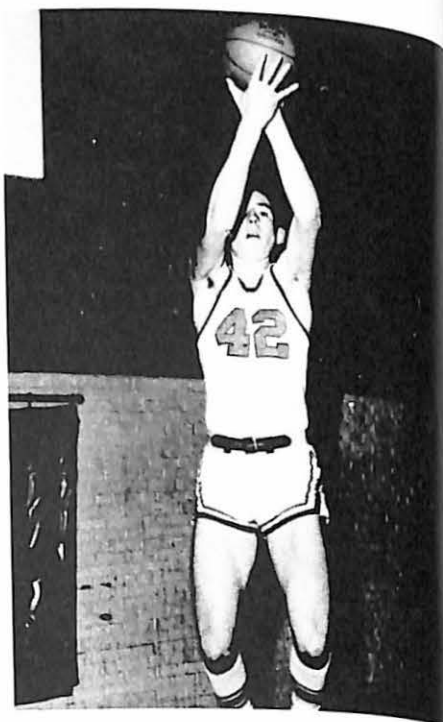
RON CRADDOCK



JOE AVENA



MEL ROGERS



JIM EDMUNDSON



EVERETT REHKOP



JON KNEHANS

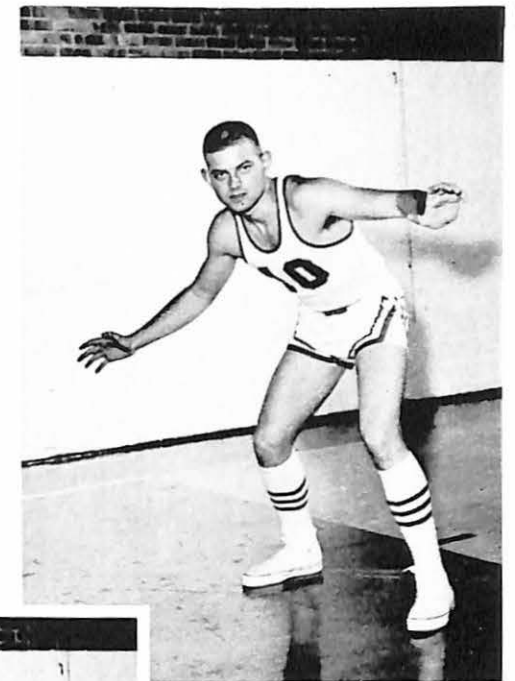


JOHN KINGSBURY

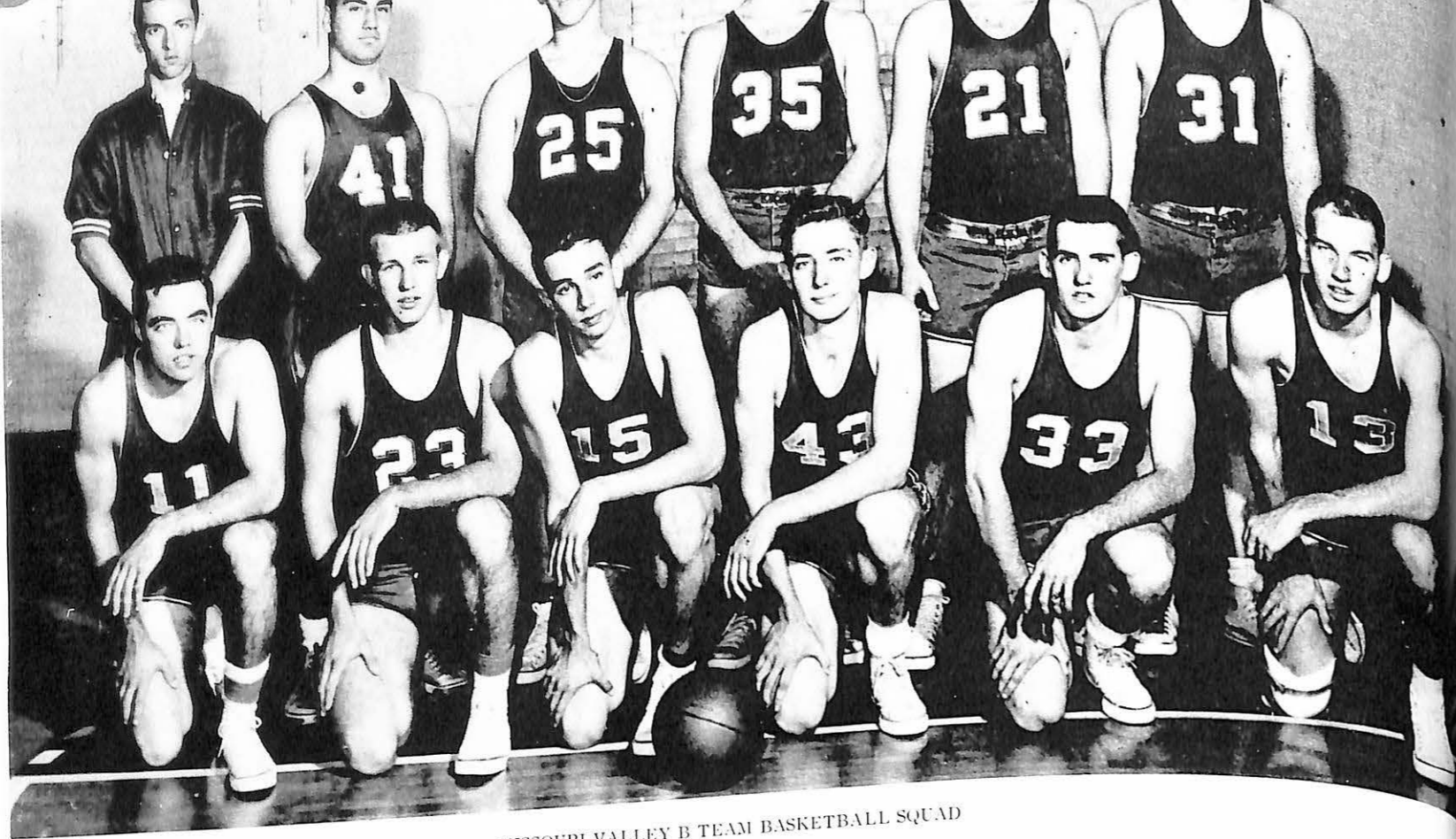
Valley's Starting 5



LELAND POTTER



DALE CARSON



MISSOURI VALLEY B TEAM BASKETBALL SQUAD

STANDING: Left To Right. Bill Blanton, Joe Avena, Gary DeLouis, John Thompson, Gary Mirts, Boaham Bibb, KNEELING: Larry

Norton, Terry Sinskey, Jim Morby, Jim Edmunson, Don Malter, Spud Swift.



LARRY SCHEER



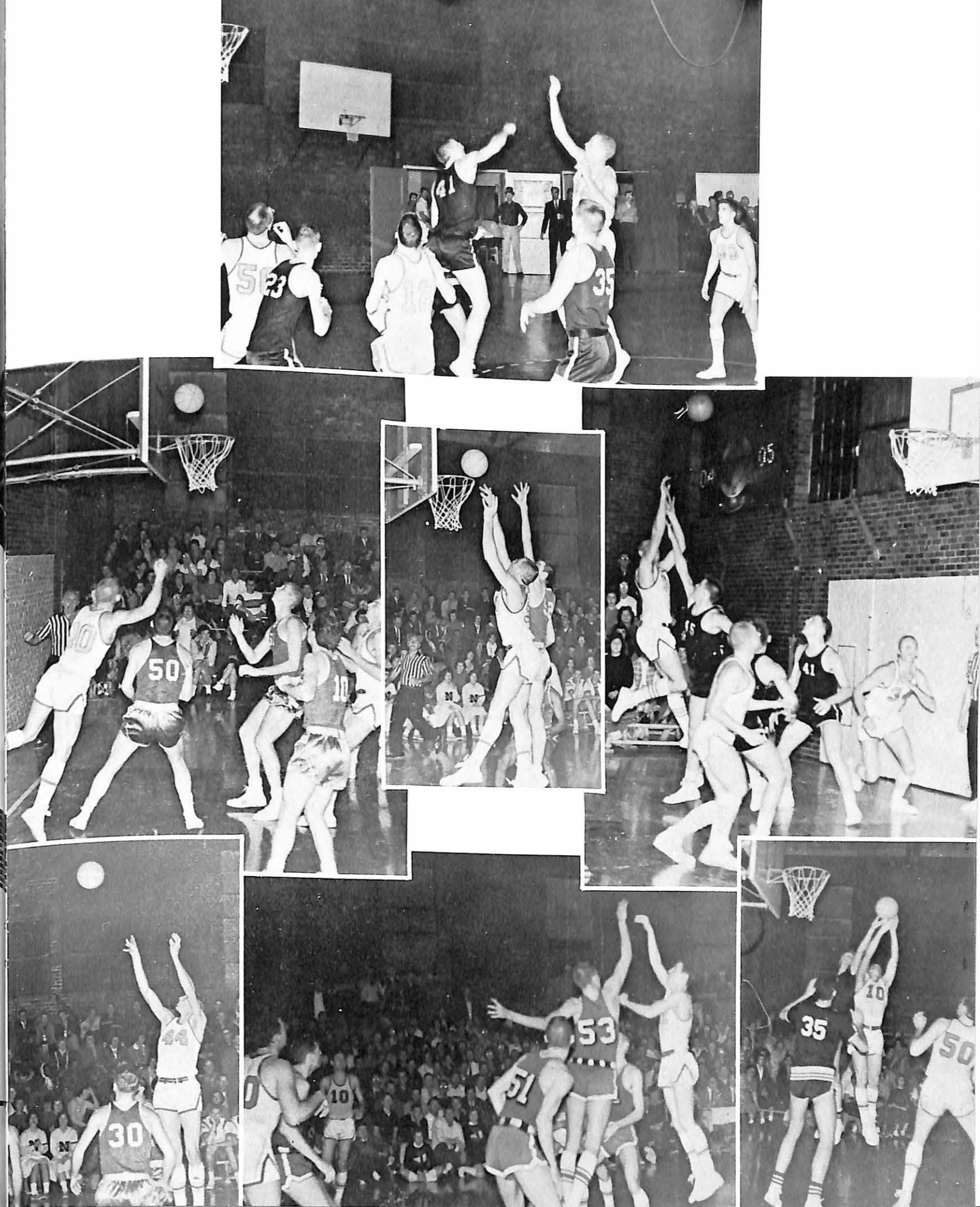
DON MALTER



R. C. SHIPLEY



LARRY NORTON



Tennis Team



BACK ROW: Left To Right, Waid Smith, Bill Weinreich, David Walker, David Wells. FRONT ROW: Don Chambers, Arlan Specht, Tom Arnote, Ron Theis, and George Burris.

Cross Country Track Team

KNEELING: Left To Right, Lee Johnson, Jim Lichtenberg, Don Leedy. STANDING: Denny Shaw, Tom Sloane.



Track Team



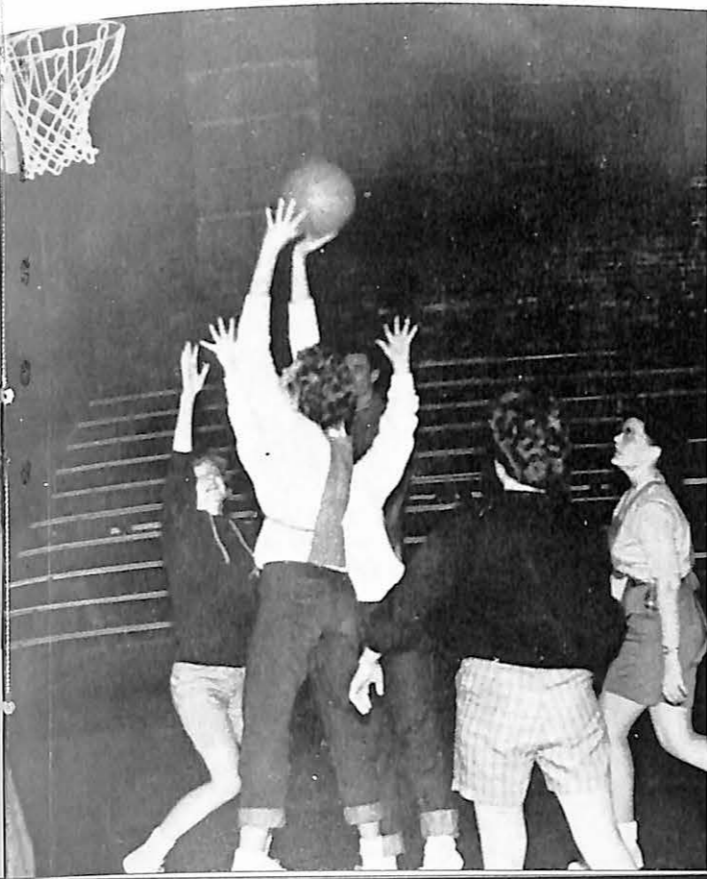
KNEELING: Left to Right, Larry Ball, Wayne Ferrin, Lee Johnson, Stewart Kendrick, Marv Eisenhauser. STANDING: Glenn Fenner, Don Leedy, Dudley McGlynn, Chuck Heegn, Walt Hicklin, Paul Rearick, Delford Thompson.





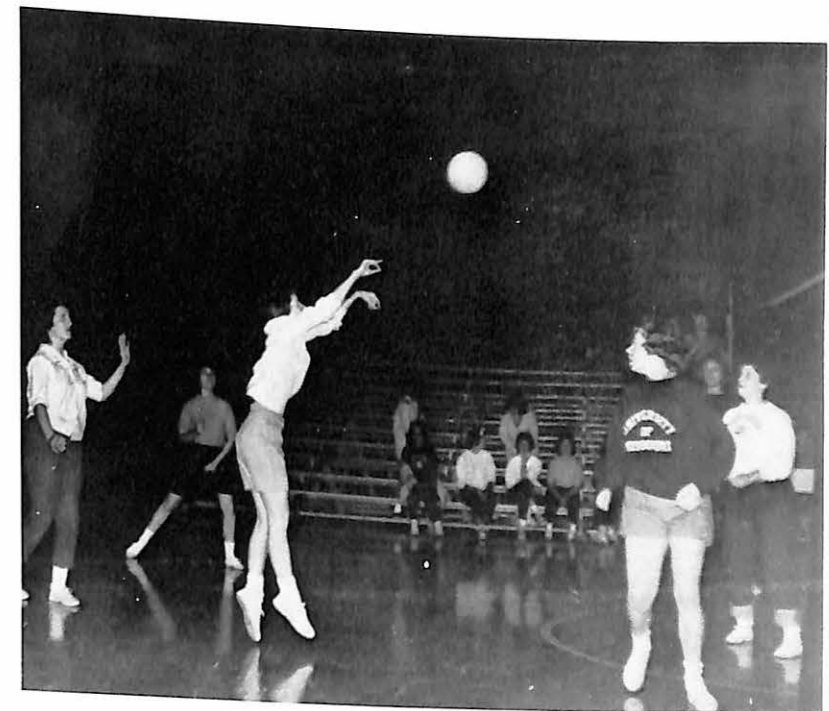
Watch the "SHINS."

Who's Goin' To Be Munched?



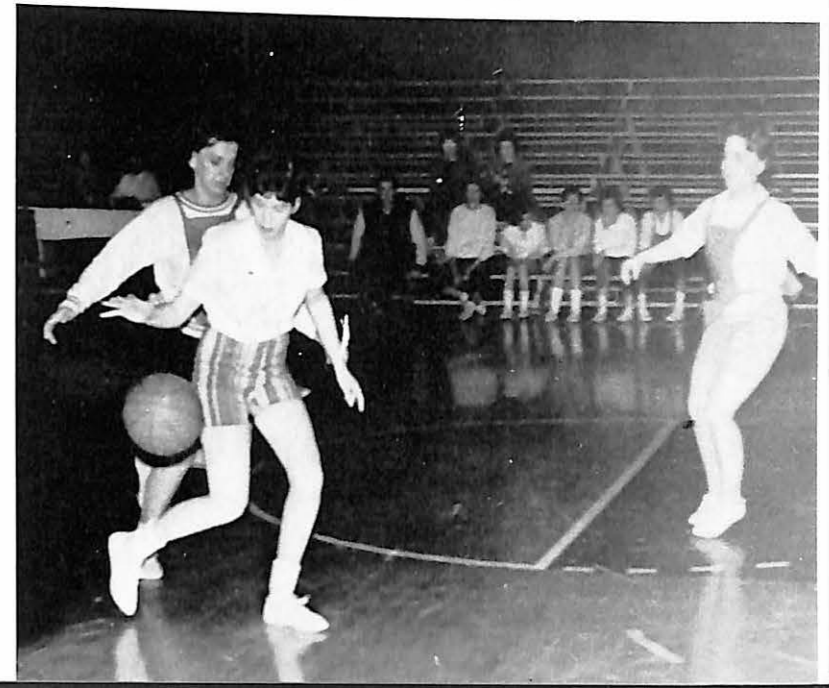
Women's Athletics

Women in the sports world were little known, until the 1900's women had no place in the athletic world. From the first hesitant ventures into gymnastics and the adoption of bloomer apparel, the idea of women in sports has gradually been accepted. Here at Valley Women spend considerable time in WAA competition, such as volleyball, hockey, basketball and baseball.



Who "DUNNIT?"

Kathy to the rescue!





Honor and Recognition Societies

THERE are campus organizations whose ultimate purpose is to extend a "golden pat on the back," to recognize leadership, scholarship, or success in a particular field. They bring together students of like levels and level of achievement, from those familiar only through membership rosters to those who gather often in close fellowship. These honoraries should not be an end in themselves, but a stimulus to greater achievements. Some are passively earned; others, actively sought. All stress the roles of honor and inspiration.



Sabiduria Selects

People make a world---people and more people. They are the story of civilization and its components. Those who were not even a factor this year may eventually control destiny and others of great promise may never develop further. In this section an effort by the SABIDURIA Board was made, not to show the biggest leaders, but those who contributed, those who questioned, those who answered, the queens, the workers, the athletes. Eight men and women were chosen from the graduating class with careful consideration. Just as they are recognized now, they will be noticed as businessmen, coaches, housewives, teachers, and politicians. Their contributions may not shape world policy in quite the way President Kennedy and Premier Khrushchev have or in the campus manner "Pop" Ferguson has, yet theirs will be important contributions to society. The most memorable personality may not even be pictured here; then again, he may.

There is depth to Anne Huston that is rarely found in a college student. Secretary of Sigma Tau Delta, Alpha Psi Omega, Valley Players, and her participation in plays and music events shows her efficiency and ability. Her efficiency is equaled only by her depth. For all these things and more Valley will remember her.

ANNE HUSTON



John Sharp is a distinctive composite of organization, interest and intellect. His ability and positive leadership has introduced him to a full schedule: Parade Marshal, Humanics, Alpha Sigma Phi, Alpha Psi Omega. His capacity has increased with his efforts and his success is impressive.

JOHN SHARP



MARY LEIGHTON

Mary has that special spark. That "say hi" type person, she is best known as a Delta Zeta and Business Office Assistant. A firm Valley fan, whose cheering for the team does not hush her mature opinions and responsibilities.



GORDON MEDARIS

Gordon will be remembered with Alpha Sigma Phi and Valley Players. Active in many activities on campus and as the able president of Alpha Sigma Phi, Gordon, is dedicated, expressive, and always laughing.



BARBARA VAN SICKLE

Barbara does a million little jobs and a lot of big ones and has fun with them all. As Asst. Dorm Mother, President of SCA and her selection to Senior Honor Privileges, she has given evidence of her ability and efficiency.



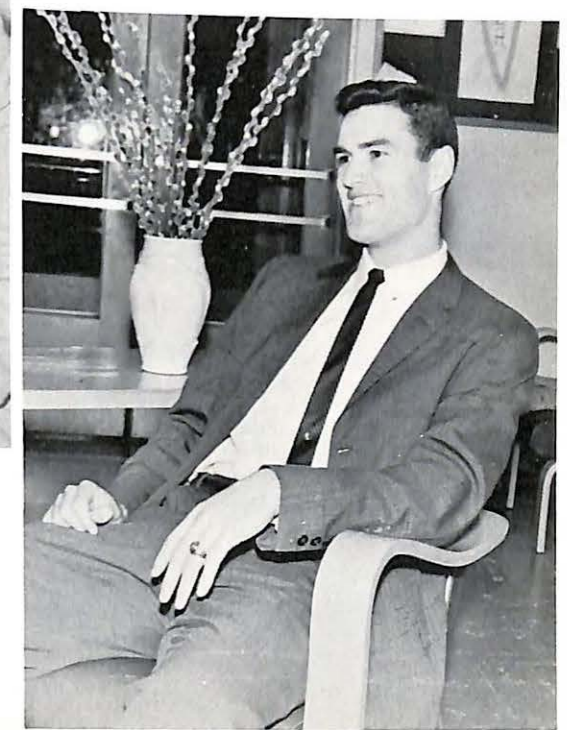
JANET McCRAE

Janet is an individual. She has a force and determination which has been of great service to Student Senate, WSGA, Panhellenic, Delta Zeta, Fine Arts Festival, and various committees. Janet's ideas and interest will not be forgotten by the people at Valley.



MEL ROGERS

Mel has been recognized as a man's man, Sigma Nu called him Lieutenant Commander, and the campus called him capable in such things as basketball, track, football, and V-Club. A quiet manner belies his many contributions.



BOB SCHAFER

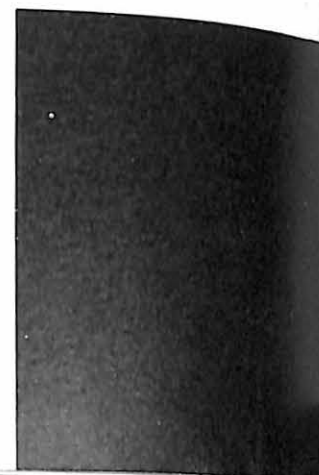
Dedicated and highly interested, Bob meets his challenges effectively, quietly and without fanfare. His work in Humanics, Alpha Phi Omega, and as President of Sigma Tau Delta indicate an organized man.

Who's Who Among Students in American Universities and Colleges

Each year 8 seniors are elected to this national honorary position. They are chosen on the basis of the Student's excellence and sincerity in scholarship; his leadership and participation in extra-curricular and academic activities; his citizenship and service to the school; and his promise of future usefulness to business and society.



LEFT TO RIGHT: Jerry Max Hilton, Jim Linsin, Sally Wilson, Diana Vail, Ed Leslie, Walter Ray Hicklin, Sandra Moore, Barb Van Sickle.



Outstanding Senior Man and Woman of 1960



MR. JACK KURTZ



MISS CORADEAN CZESCHIN

Senior Honor Privileges



EDDIE LESLIE



TOM CURRY



JERRY HILTON



JAMES LINSIN



HENRY KIM

SOME NOT PICTURED

Cap and Gown

It is a Senior Women's Honor Society which was founded on the campus of Missouri Valley College during the spring of 1957. It was founded with the idea and the hope that the society might eventually become a chapter of Mortar Board, which is a national honor society for women. Selection for membership, is made by active members on qualities of leadership, service, and scholarship as found in outstanding undergraduate women of Missouri Valley College.



Members this year are: Sandra Moore, Sally Wilson, Marilyn Cole. Not Pictured: Janet McCrae.

Pi Gamma Mu

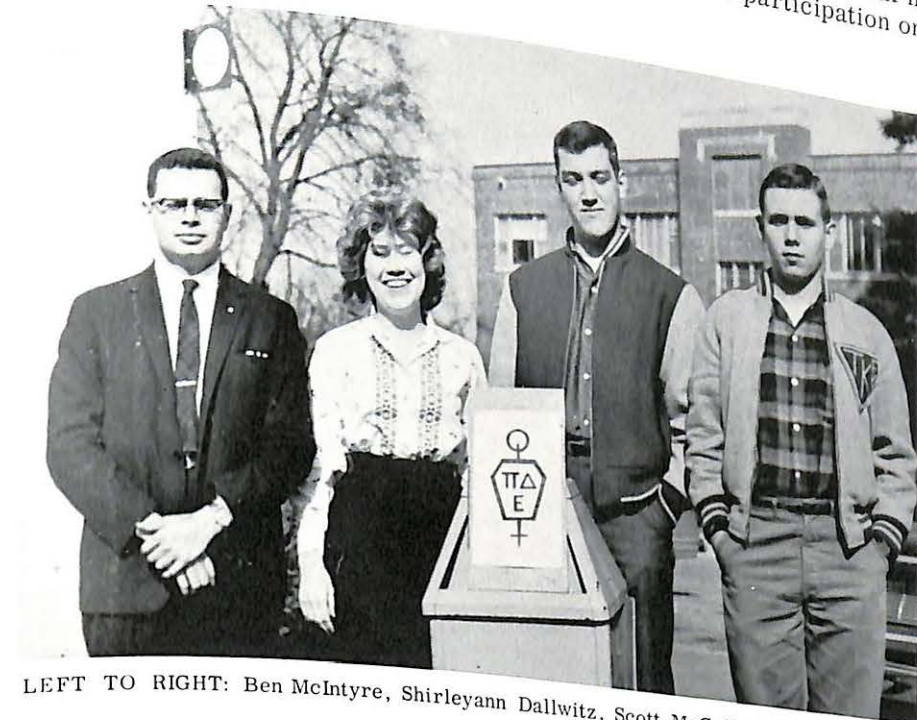
This is a national honor society in the social sciences. Juniors and Seniors with 20 hours credit in social sciences with grades of A or B are considered for election. Occasional open meetings take the form of roundtable discussions of vital social problems.



LEFT TO RIGHT: Jim Linsin, Dean Tweito, Tom Curry.

Pi Delta Epsilon

This honorary was founded in 1909 at Syracuse, N.Y. It is the oldest national honorary collegiate Journalism fraternity in the nation. Membership is gained through active participation on the college paper or yearbook and election by its initiated members.



LEFT TO RIGHT: Ben McIntyre, Shirleyann Dallwitz, Scott McCulloch, John McMullen.

Pi Kappa Delta

The National Debate Fraternity. Membership requires that the individuals must participate in inter-collegiate debates or extemporaneous speeches.

Pi Kappa Delta, National Debate Fraternity, was recently re-organized on the Valley Campus. During the Honor Convocations, held in the early part of March, the following people were received as new members into the fraternity:

James Camp
William Coffee
Robert C. Ewens
Bert Ronald Fenton
David Woodman
Richard L. Wyatt

Other members include:

Scott McCullough
Frank Pellegrine
Jerry Max Hilton

The fraternity sponsor is Dr. Hillus McKinzie.

Beta Beta Beta

This is a national honor society in Biology, designed to stimulate scholarship and to promote research in that field. It is restricted to high ranking majors in the Department of Biology.



SEATED: Left To Right, Art Knepe, Bob Stuart, Val Fink, Dr. Thomas, Willie Lowe, Chuck Heegn, Mickey McLellan. STANDING: John Sikora, Ray Streina, Bob Woodsmall, Leland Potter, Dick Bueker, Mel Rogers, Dahl Tibbetts, Dennis Freyling.

Sigma Tau Delta

The purpose of this fraternity is to promote the mastery of written expression encouraging worth-while reading, and fostering a spirit of fellowship among men and women specializing in English. Membership is limited to those upperclassmen specializing in English, with a minimum of "B" average in this work.



SEATED: Left To Right, Linda Anderson, Virginia Barnds, Diana Vail, Connie Kelley. SECOND ROW: Bob Schafer, Mrs. McAnich, Dean Tweito, Dr. Yerbury, Jerry Hilton.

Beta Gamma Phi

Election to this general scholastic honor society is the highest academic recognition open to Juniors and Seniors. Election is by the faculty from those Seniors throughout their college career. In addition, three Juniors attaining an honor point average of at least 3.3 semester Juniors enrolled at the time of selection.



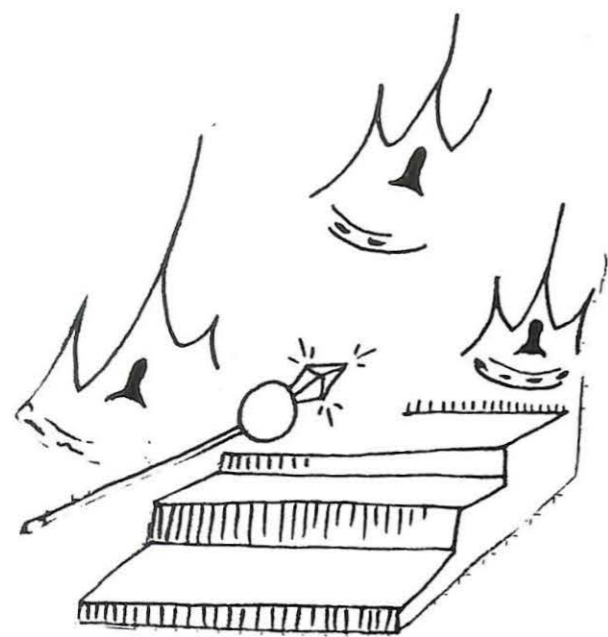
SEATED: Left To Right, Connie Kelley, Barbara Maitland, Pat Clark. STANDING: Tom Curry, Jerry Max Hilton, Don Chambers, Dr. M. A. Collins.

Alpha Psi Omega

This honorary dramatic fraternity was founded in 1925 to recognize and reward all phases of student participation in college play production. Membership is gained through participation in dramatic activities. Points are awarded for different activities and a total of fifty points is required for membership.



LEFT TO RIGHT: Jim Linsin, Skip Uhlemann, Claudia Headen, Shirleyann Dallwitz, Judy Romph, Mr. Cunningham, Chuck Durnett.



Royalty

There is the certain charm to the word "queen." It denotes something rather special and rather romantic with grace and power. In our modern world they are certainly more figureheads than actual rulers, but such a symbol nonetheless is highly regarded. Many people feel that college is one competition after another, and often a queen contest is the one in question. Maybe it is the students' way of giving a significant title to a winner in one of the hectic campaigns in which the campus groups so avidly enter. In addition to the many all-campus elections, various groups and fraternities honor men and women with the title of Sweetheart, Class Queen or King, and Mr. Viking.



Attendants

Miss

Sandra

Moore



Miss

Mary

Bulley



Sabiduria

Queen



Miss

Sally

Wilson



Attendants

Miss

Sandra

Moore



Miss

Pat

Clark



Homecoming

Queen



Miss

Marilyn

Saddler



Attendants

Miss

*Marilyn
Feldman*



Miss

*Lynn
Gurley*



Basketball

Sweetheart



Miss

*Linda
Bryan*



Attendants

Miss

Valdina

Fink



Miss

Kay Lynne

Borden



May

Queen

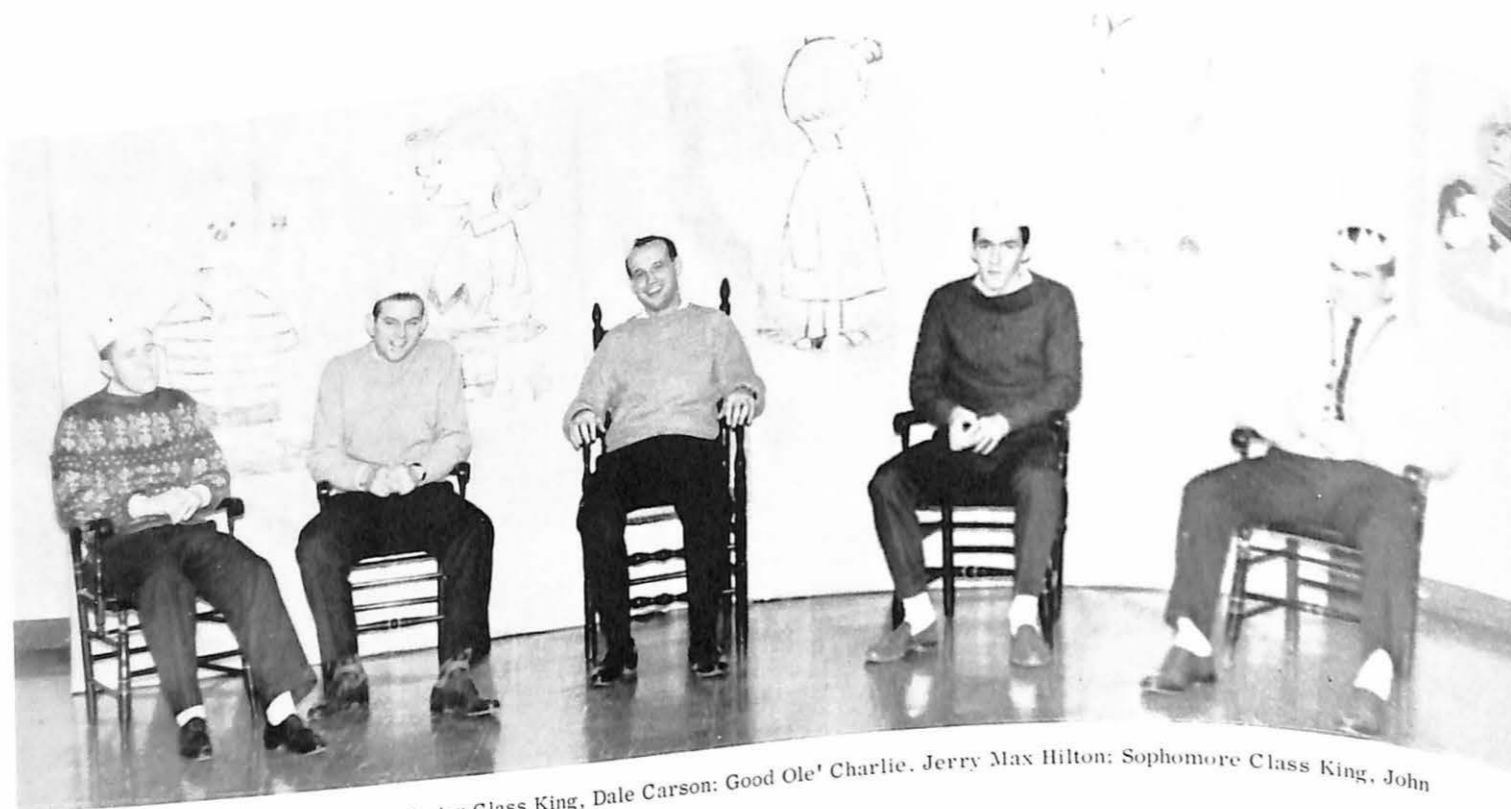


Miss

Judy

Morgan





Senior Class King, Bob Stuart; Junior Class King, Dale Carson; Good Ole' Charlie, Jerry Max Hilton; Sophomore Class King, John Kingsbury; Freshman Class King, Dwain Hall.

Good Ole' Charlie Brown

- Good Ole' Charlie Brown Jerry Max Hilton
- Senior Class King Bob Stuart
- Junior Class King Dale Carson
- Sophomore Class King John Kingsbury
- Freshman Class King Dwain Hall



Mr.
Viking



Walt
Hicklin



G
S
J
S
I

