

MISSOURI VALLEY COLLEGE



3 7010 00239665 9



AWC
378
S. 41
1950
C.

SABIDURIA

MISSOURI · VALLEY · COLLEGE

1950

Here is your
✓ 1950
SABIDURIA



Murrell Library
Missouri Valley College
Marshall, Missouri

Published by the Students of
✓ MISSOURI VALLEY COLLEGE
Marshall, Missouri

66 975

V



6/58

36943
C.2

WILLIAM I. FERGUSON, D. Sc.

In the name of the entire student body of Missouri Valley College, the Class of 1950 proudly dedicates this issue of the Sabiduria to Mr. Viking, the creator of the great Viking Spirit.

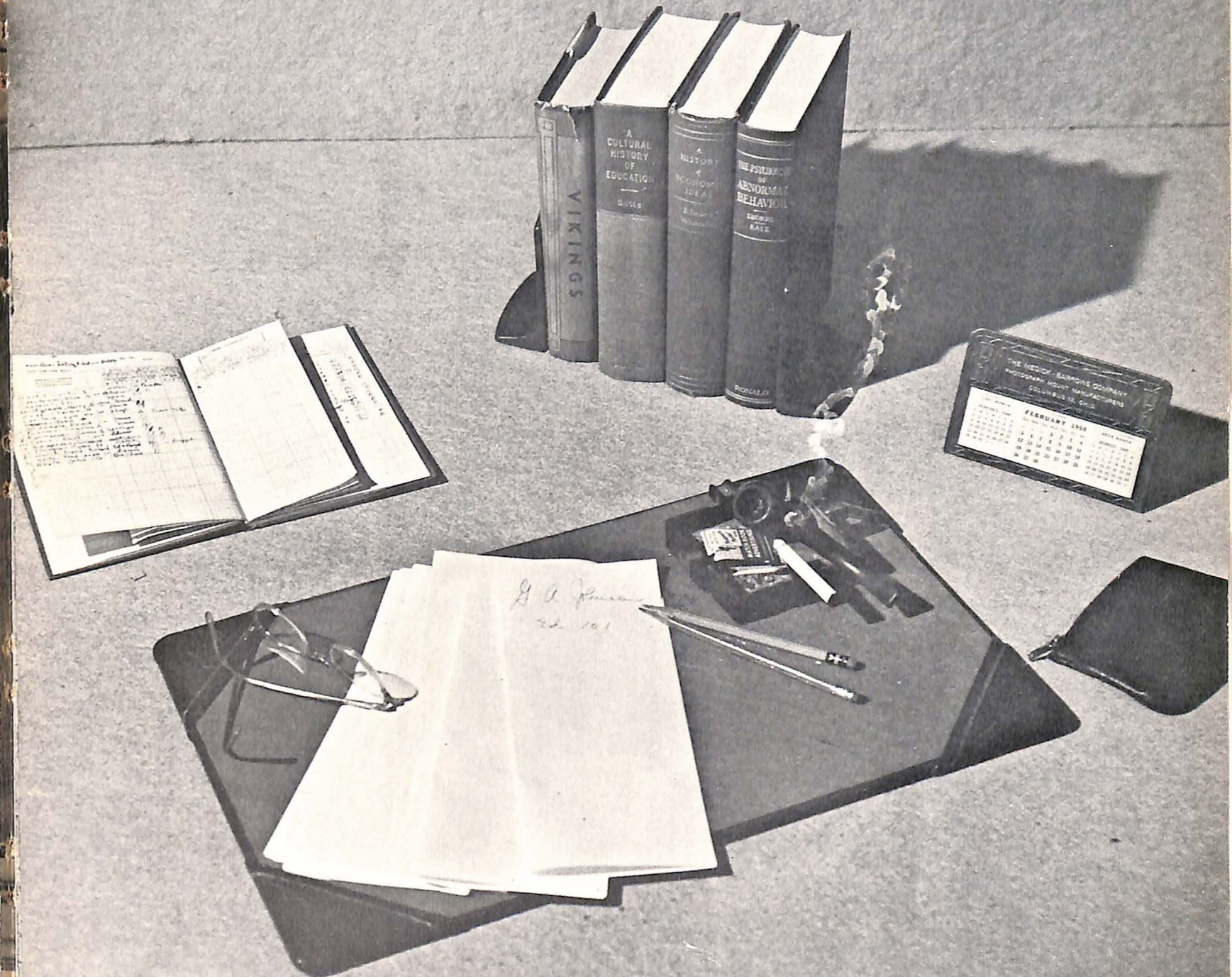
As he has dedicated his life to the perpetuation of that spirit, so we dedicate this volume to his inspirational leadership on the athletic field as well as in the field of learning.

~~66-975~~



Seated left to right: Rose, Leonard, Mitchell, C. Gordon, Bartle, Smith, Marshall, Johnson, Jackson, McFarland.
 2nd row left to right: J. L. Gordon, Jones, W. C. Gordon, Bartle, Smith, Marshall, Johnson, Jackson, McFarland.
 3rd row left to right: Jensen, Casabolt, Gregg, Rusl, Hurt, Carter, Schaeperkotter, McKlung, Hungerford, Parsons, Olson.

Board of Trustees





H. ROE BARTLE, J. D.

New programs of study, an expansive building program, a well-trained, well-paid faculty, are but a few of the advancements made by Missouri Valley College since Dr. Bartle assumed the position of president of the school in 1948.

His personal enthusiasm, ambition and actual work bodes well for the future of Valley. No man is a greater Viking; no man proclaims the days ahead with greater spirit.



Greetings

I am truly grateful for the opportunity to greet the students and friends of Missouri Valley College. Ours is a cooperative endeavor in which we seek to develop well-rounded people-- individuals who are able to carry their own load and make worthwhile contributions to a democratic society. The broad educational aim of training for living as well as ways of making a living are the goals towards which Missouri Valley College shall ever strive.

This publication is an excellent example of the cooperative endeavor that should characterize all our efforts.

E. Dewey Smith



J. FREDERICK DOERING,
Ph. D.
Dean of Faculty



STANLEY I. HAYDEN,
M. A.
Registrar and Director of
Admissions



E. L. PARSONS, Ph. B.
Treasurer and Business
Manager



BYRON B. BANTA, M. A.
Director of Student
Activities



LENA DAVISON, M. A.
Assistant Director of Student
Activities

VOLNEY ASHFORD, M. A.
Director of Athletics and
Professor of Physical
Education



EVALYN MARIE COOK,
R. N.
Nurse, Health Center



MAMIE DUFFORD
Instructor in Piano and
Theory



JULIA EATON, Ph. D.
Assistant Professor of Speech
and Drama



ELIZABETH CAMPUZANO,
M. A.
Associate Professor of
Spanish



PAUL M. DAUTEN, M. A.
Professor of Economics



RAY T. DUFFORD, Ph. D.
Professor of Physics



JEAN H. FAUROT, Ph. D.
Professor of Philosophy

C. L. FICHTHORN, Mus. D.
Dean of School of Music and
Professor of Organ



EDWIN P. FISHER, M. A.
Assistant Professor of
Business Mathematics

LOUIS HANSEN, M. M.
Associate Professor
Instrumental
Chapel and Choral Music



HOBART HILL, M. R. E.
Professor of Human
Relations

GRATTON KEMP, Ed. D.
Professor of Speech and
Drama
Director of
Personality Clinic



JOHN LAMKIN, M. S.
Associate Professor of
Chemistry

ESTHER LIFFRING, J. D.
Associate Professor Business
Administration



ROBERT LIGHTFOOT, M. S.
Librarian

ROBERT S. LINNELL,
M. B. A.
Assistant Professor of
Business Administration



MARGARET McANINCH,
M. A.
Associate Professor of
English and Classics

FRANCES MOOSE, M. A.
Assistant Librarian



NADINE W. OVERALL,
Ph. D.
Professor of English

HENRY PEPPER, Ph. D.
Assistant Professor of
History



DOW G. PINKSTON, B. D.
Administrative Assistant

NANCY LU PIPPIN,
B. S. Ed.
Instructor in Physical
Education



EVELYN POWELL, M. M. E.
Assistant Professor in
Voice and Theory

ASA RUYLE, JR. Ed. D.
Associate Professor of
Education and Psychology



MILDRED W. SAUPE, Ph. D.
Professor of Education

REMINGTON SCHUYLER
Associate Professor of Art
Resident Artist



J. DALE SKELTON, M. A.
Assistant Professor of
Physical Education and
Engineering

GORDON H. SMITH, M. A.
Assistant Professor of
Journalism and Director of
Public Relations



JAMES C. SPALDING, B. D.
Professor of Religion

CHARLES R. SPINDLER,
M. S.
Associate Professor of
Economics



J. H. STELLWAGEN, Ph. D.
Professor of Modern
Languages

WYLIE F. STEEN, B. D.
Alumni Secretary



BRUCE STEWART, M. A.
Assistant Professor of
Biology and Geology

EASTON STUHR, M. S.
Instructor in English



LAWRENCE THOMAS,
Ph. D.
Professor of Biology

RODNEY WELLS, M. A.
Assistant Professor in
Social Science



A. C. ZUMBRUNNEN, D. D.
Professor of Sociology

MRS. CLEO CAMPBELL
Director of Campbell Hall



MRS. FRANCES VAN
NATTA, B. S.
Director of Young Hall



RAYMOND HAYOB, A. B.
Assistant Treasurer and Business Manager



Gloria Bullington, Lynelle Hawkins, Mytilla Bishop
Registrar and Dean of the Faculty Secretaries



Dorothy White, Norma Venditti, Virginia Tabor, Luetta Pearson
Staff Secretaries

Cafeteria Staff



Left to right: Mrs. Minnie Short, Mrs. Kathryn Howery, Mrs. Quisenberry, Mr. Quisenberry, Miss Nola Barrow, Mrs. Leona Davis, Miss Ruby Borgman.

Maintenance Crew



Left to right: B. F. Mounts, J. A. Gilliam, E. F. Patton, George Howery, E. A. Millard, Ollie Banty, Alf Harper.



Seated left to right: Lois F. Hough, Mary Carrothers.
 Standing left to right: Frederick A. Skinner, George H. Killoren Jr., Owen E. Thompson, Herbert
 L. McKinney, Ernest Luehrman.

"Who's Who"

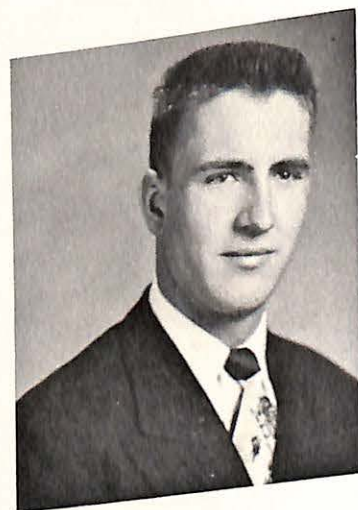
This year seven students represent Valley in the annual edition of "Who's Who in American Universities and Colleges." They were elected to this honor on the basis of character, scholarship, leadership, and possibility of future success.



Senior Queen



ROBERT M. ABENSTEIN
Chicago, Illinois
Major: History
Sigma Nu, 1, 2, 3, 4
Pi Gamma Mu, 4
Dean's List Honor Roll, 3
Delta, 4
Transferred from University of Illinois



CORNELIUS R. ANDERSON
Freeman, Missouri
Major: Physical Education
Biology
V-Club, 2, 3, 4
Football, 3, 4
Track, 2, 3
Track, 2, 3
Co. Capt., 4
Basketball, 2, 3
Co. Capt., 4



KARL ANDERSON
Oak Park, Illinois
Major: Chemistry & Math
Transferred: University of Illinois, 3



WILLIAM R. ALLEN
Brookfield, Missouri
Major: Business Ad. & Economics
Minor: Speech
Student Senator, 2, 3
Football, 2
V-Club, 2
President Commerce Club, 4
Co-Editor Sabiduria, 4



NEIL ANDERSON
Knobnoster, Missouri
Major: Business Administration
Alpha Sigma Phi, 2, 3, 4



JOE ANGAROLA
Chicago, Illinois
Major: Education, History, English
Baseball, 1, 2
Football, 1, 2
V-Club, 3, 4
Alpha Sigma Phi, 3, 4
Sigma Tau Delta, 4



EARL H. BAKER
Marshall, Missouri
Major: Physical Education
V-Club, 1, 2, 3, 4
All-Conference, 4



LOIS ATCHLEY
Marshall, Missouri
Major: Elementary Education
Alpha Xi Delta, 2, 4
Band, 1, 3, 4
Student Senate, 4
Davidsbundler, Homecoming Queen, 1949
Transferred, University of Missouri, 3



RAY JACK BAILEY, JR.
Sedalia, Missouri
Major: Business Administration
Alpha Sigma Phi, 3, 4
Track, 3, 4
Attended Park College, 1, 2



CALVIN H. BALTHIS
Marshall, Missouri
Major: Speech
Minor: Economics
Vesper Choir, 2
Band, 2, 3



JAMES R. BELT, JR.
 Kansas City, Missouri
 Major: Philosophy
 D. A. C. 3, 4
 Alpha Phi Omega, 3, 4
 Alpha Psi Omega, 4
 Chi Alpha, 3, 4
 Student Christian Association, 4
 Vesper Choir, 4
 Chapel Choir, 4
 Glee Club, 4
 Transferred: Kansas City Junior
 College, 3



MERLE BERLIN
 Marshall, Missouri
 Major: History
 Alpha Sigma Phi, 4
 Student Senate, 4



ALLEN BRADFORD BESS
 Sedalia, Missouri
 Major: Business Administration
 Alpha Phi Omega, 1, 2, 3, 4
 Chi Alpha, 2, 3, 4
 Commerce Club, 4
 Band, 1, 2, 3, 4



BELKNAP RAYMOND, JR.
 Nevada, Missouri
 Major: Public School Music
 Band, 3, 4
 Orchestra, 3, 4



JOHN L. BLACKBURN
 Malta Bend, Missouri
 Major: B. S. in Education
 Alpha Sigma Phi, 3, 4
 Alpha Phi Omega, 4
 Vice-Pres. Student Senate, 4



EDWIN R. BORGMAN
 Slater, Missouri
 Major: Education, Music
 Davidsbundler, 1, 2,
 Vice-Pres. 3, Pres. 4
 Vesper Choir, 1, 2, 3
 Chapel Choir, 1, 4
 A capella Choir, 3
 Member Student Chapter of
 American Guild of Organists, 4



THOMAS J. CANNON, JR.
 Sedalia, Missouri
 Major: Economics & Education
 Chi Alpha Omega, 1, 2
 Alpha Sigma Phi, 2, 3, 4
 Student Committee for Federal
 World Government, 1, 2
 President, 1, 2
 Band, 2, 3
 Orchestra, 2



ELAINE ALLYN BRAY
 Highland Park, Illinois
 Major: Divisional Social Science
 Alpha Xi Delta, 1, 2, 3
 Treas., 4
 Y. W. C. A., 1, 2, 3
 W. A. A. 1, 2, 3
 Pi Gamma Mu, 4
 Student Ass't, 4
 Vesper Choir, 1
 Pep Club, 1, 2, 3
 Girls' Glee Club, 4



ELLA DEAN BRERETON
 Smithton, Missouri
 Major: Education, History &
 Math.
 Y. W. C. A., 1, 3
 A capella Choir, 1, 3, 4
 Vesper Choir, 1, 3
 Chapel Choir, 3, 4
 Band, 1
 Orchestra, 1
 Girls' Glee Club, 4
 Pi Gamma Mu, 4
 Honor Roll, 1, 2, 3, 4



STANLEY AXEL CARLFELDT
 Chicago, Illinois
 Major: Business Administration
 Sigma Nu, 3, 4
 Intramurals
 Transferred from Loyola
 University, 3



RICHARD CARLSON
Chicago, Illinois
Major: Biology
Beta Beta Beta, 4
Sigma Nu, 4
Science Club



ARTHUR JOHN DAVIDSEN
Chicago, Illinois
Major: Education, History
Sigma Nu, 3, 4
Transferred: Loyola University, 3



**RICHARD VINCENT
De KRUYFF**
Kansas City, Missouri
Major: Education, Speech
Alpha Sigma Phi, 3, 4
D. A. C., 2, 3, 4
Alpha Psi Omega, Pres., 4
Student Union Committee, 3
Student Senate Social
Committee, Pres., 3
Delta Staff, 3
Sabaduria Staff, 3
"House of Vivid", 4



IRL L. CHANDLER
Lamoni, Iowa
Major: Human Relations
Alpha Phi Omega, 1, 2, 3, 4
Glee Club, 4
Transferred from Kansas U., 4



HAROLD DeWEESE
Brunswick, Missouri
Major: Business Administration



JOHN GORDON DINGLEY
Mt. Leonard, Missouri
Major: Public School Music
Davidsbundler, 1, 2, 3, 4
Sigma Tau Delta, 4
Vesper Choir, 1, 2, 3, 4
A capella Choir, 1, 2, 3, 4
Band, 4



ANITA JEAN DROMEY
North Chicago, Illinois
Major: Business Administration
D. A. C., 1, 2, 3
Vesper Choir, 3
Transferred: Lincoln Jr. College,
3



JANE DONOGHUE
Louisville, Kentucky
Major: Economics
Alpha Xi Delta, 1, 2, 3, Pres., 4
W. A. A., 1, Pres., 2
Pan-Hellenic, 3
Commerce Club, 4
Y. W. C. A., 1, 2



RALPH P. DORREL
Waterford, California
Major: Physical Education
V-Club, 2, 3, Sec. & Treas., 4
Track, 2, 3, Co. Capt., 4
Basketball, 2, 3, Co. Capt., 4



DONALD EKENDAHL
Chicago, Illinois
Major: B. S. In Business Ad.
Commerce Club, 3, 4
Transferred from Morgan Park
Jr. College, 3



TOM ERWIN
 Kansas City, Missouri
 Major: Psychology A
 Sigma Nu, 1, 2, Chaplain, 3,
 Treas., 4
 Alpha Phi Omega, 1, Sec. 2
 Band, 1
 A capella, 1, 3, 4
 Vesper Choir, 1, 3, 4
 Student Ass't, 3, 4
 D. A. C., 1



LAWRENCE H. FIELDS
 Independence, Missouri
 Major: Education, Speech
 D. A. C., 2, 3, Pres., 4
 Alpha Phi Omega, 2, 3, 4
 Alpha Psi Omega, 4
 V-Club, 1, 2, 3, 4
 Football, 2, 3, 4
 Track, 1, 2, 3, Co. Capt., 3, 4



WILLIAM ROBERT GERHARD
 Marshall, Missouri
 Major: Business Administration
 Alpha Sigma Phi, 3, Treas., 4
 Delta Sports Editor, 2
 Commerce Club, 4
 Science Club, 1, 2



WILLIAM J. FAIRBANKS
 Oak Park, Illinois
 Major: Business Administration
 Commerce Club, 4
 Sigma Nu, 2, 3, Treas., 4
 Transferred: Northwestern U., 2



CHARLES FREDRICK GIERSE
 Farmington, Missouri
 Major: Business Administration
 Sigma Nu, 1, 2, 3, 4
 Transferred: Northwestern U., 4



FRANCIS GIGER
 Slater, Missouri
 Major: Physical Education
 Basketball, 1, 2, 4
 V-Club, 1, 2, 3, 4
 Transferred from Westminster, 1



JAMES Mac NABB HAMILTON
 Lowell, Massachusetts
 Major: Chemistry
 Alpha Delta Kappa, 1
 Delta, 4
 Sabaduria, 4



GLEN W. GONDER
 Carrollton, Missouri
 Major: English
 Sigma Tau Delta, 4
 A capella Choir, 1, 2, 3



BERT M. HALL
 Kansas City, Missouri
 Major: Physical Education
 V-Club, 1, 2, 3, 4
 Football, 1, 2, 3, 4
 Basketball, 2



PATRICIA ANN HARVEY
 Kansas City, Missouri
 Major: Education, Music
 Alpha Xi Delta, 3
 Marshall, 4
 W. S. G. A. Pres. 4
 W. A. A., 3
 Chapel Choir, 4
 Y. W. C. A., 3
 Delta Staff, 3
 Student Senate Committee, 3, 4



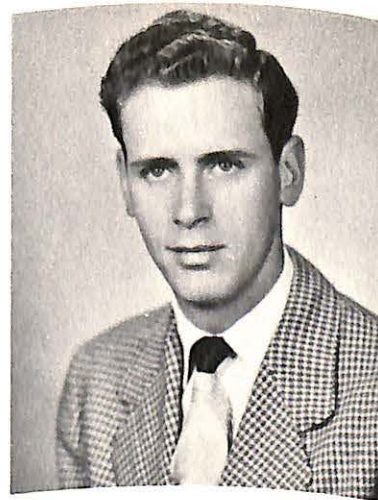
HARRY HAYES
 Marshall, Missouri
 Major: Physical Education
 Football, 1, 2, 3, 4
 Baseball, 1, 2



HENRY H. HOFFMAN
 Houstonia, Missouri
 Major: Biology
 Vesper Choir, 2, 3, 4
 A capella Choir, 2, 3, 4
 Chapel Choir, 3, 4
 Hoffhite Quartet, 2, 3, 4
 Davidsbundler, 2, 3, 4
 Beta Beta Beta, 3, 4
 Student Senate Social
 Committee, 3
 Transferred from William Jewell,
 2



WILLIAM A. HOFFMAN, JR.
 Houstonia, Missouri
 Major: Chemistry
 Vesper Choir, 1, 2, 3, 4
 A capella Choir, 1, 2, 3, 4
 Hoffhite Quartet, 2, 3, 4
 Beta Beta Beta, 4



EUGENE HEINZLER
 Marshall, Missouri
 Major: History



**JOSEPH RICHARD HOLWELL
 JR.**
 Los Angeles, California
 Major: Physical Education
 V-Club, 2, 3, 4
 Football, 2, 3, 4



ERSKINE T. HOPE
 Dexter, Missouri
 Major: Business Administration
 Football & Baseball, 1, 2
 Transferred from Lambuth
 College, 3



LEROY M. JOHNSON
 Egbert, Wyoming
 Major: Human Relations
 Alpha Phi Omega, 4
 Student Christian Association, 4
 Transferred from U. of Wyoming,
 4



RUBEN A. HUNKER
 Roanoke, Missouri
 Sigma Nu, 2, 3, 4
 A capella, 2
 Major: Education, History



JOHN HUNT
 Kansas City, Missouri
 Major: Physical Education
 V-Club, 2, 3, 4
 Track, 1, 2
 Football, 1, 2, 3, 4
 President Black Hall, 3



THOMAS D. JONES
 Kansas City, Missouri
 Major: Psychology
 Sigma Nu, 1, 2, 3, 4



DALVIN BERG JULIAN
Chicago, Illinois
Major: Business Administration
Sigma Nu, 3, 4
Commerce Club, 4



WILLIAM KAMM
Kansas City, Missouri
Major: Business Administration
Commerce Club, 4
Alpha Phi Omega, 2, 3
Transferred: U. of Kansas City, 2



WILLIAM MEACHAM KEAN
Evanston, Illinois
Major: Economics
D. A. C., 1
Sigma Nu, 1, 2, 3, 4
Commerce Club, 3, 4



LILY JUNG
St Louis, Missouri
Major: English
Minor: History
Y. W. C. A., 1, 2, 3, Treas., 3
Delta Zeta, 2, 3, 4
Corr. Sec., 4
Pan-Hellenic, 4, President, 4
Junior Queen, 3
WSGA Vice-Pres., 4
Pi Gamma Mu, 4
Sigma Tau Delta, 4



GEORGE F. KENT
Chillicothe, Missouri
Major: Business Administration
Alpha Sigma Phi, 4
Student Senate Secretary, 4
Commerce Club, 4



GEORGE H. KILLOREN, JR.
Chicago, Illinois
Major: Education, History
Football, 1, 2
Delta Editor, 4
Pres. Mo. College Newspaper
Association, 4
Sabiduria Staff, 3
Sigma Nu, 3, 4
House President-Birkhead, 3
Who's Who in American Colleges,
4
D. A. C., 4



WILLIAM E. LINGENFELDER
Deerfield, Illinois
Major: Physical Education
Football, 1, 2, 3, Capt., 4
V-Club, 1, 2, 3, 4



EUGENE C. KOELLER
Chicago, Illinois
Major: Chemistry
A. P. O., 1, 2, 3, 4, Pres., 4
Science Club, 1, 2, 3
Chi Alpha, 1, 2



DEAN S. LESLIE
Kansas City, Missouri
Major: Music
A capella Choir, 3, 4
Male Glee Club, 4
Vesper Choir, 3, 4
Transferred from Kansas City, Jr.
College, 3



MARTIN JOHN LOEWYKS
Webster Groves, Missouri
Major: Chemistry



WILLIAM TYLER LLEWELLYN
LaGrange, Illinois
Major: Business Administration
Alpha Sigma Phi, 3, 4
Glee Club, 1, 2, 3, 4
Intermural Athletic Committee, 4
Choir, 3, 4
Basketball, 1, 2, 3,
Marketing Club, 4



ERNEST W. LUEHRMAN
Lexington, Missouri
Major: Philosophy
Chi Alpha Omega, 1, Pres. 4
Ministerial Group, 2, Chairman, 3
Student Christian Association, 4
Gospel Team, 2
Moderator, 3, 4
Vesper Choir, 1, 2, 3, 4
Chapel Choir, 2, 3, 4
Men's Glee Club, 4
Track, 1, 2, 3, 4
Class President, 4
Who' Who 4



RICHARD LUEBERT
Bogard, Missouri
Major: English



RUSSELL A. LONG
Lees Summit, Missouri
Major: Math
Football, 1, 2, 3
Track, 2
V-Club, 1, 2, 3
Student, Senate, 2
Alpha Delta Kappa, 1, 2



PHILIP J. McAULEY
Long Island, New York
Major: Economics
Sigma Nu, 3, 4
Student Senate, 4
Student Ass't History Dept., 4



HAROLD LEE McFADDEN
Lexington, Missouri
B. S. in Business Administration
Commerce Club, 4



PAUL MENDENHALL
Overland Park, Kansas
Major: Business Administration



HERBERT E. MCKINNEY
Brookfield, Missouri
Major: Sociology, Psychology
V-Club, 1, 2, 3, 4, Pres., 2, 3,
Sgt. Arms, 4
Sigma Nu, 3, 4, Chaplain, 4
Football, 1, 2, 3, 4
Vice-Pres. Sophomore Class
Vice-Pres. Senior Class
Who's Who, 4
Co-Editor Sabiduria, 4
Little All American, 4



JOHN MASTERS
River Forest, Illinois
Major: Business Administration
Sigma Nu, 3, 4



ANDREE MEYNIEL
Paris, France
Major: History
Lycee of Vichy, Oriental School
of Paris, U. of Paris



CHARLES MILLER
Trenton, Missouri
Major: Business Administration



BETTY JO MONTAG
Beaver, Pennsylvania
Major: Biology, Education
Y. W. C. A., 1, 2, 3, Pres. 2
Beta Beta Beta, 3, Sec., 4
W. A. A., 3, 4
Gospel Team, 1, 2, 3, 4, Pres., 2
Student Christian Association
Transferred: Westminster
College, Salt Lake City, Utah



JAMES LAWRENCE
MURRAY
Harrison, New York
Major: Education, History



LEROY FARELL MITCHELL
Oakland, California
Major: Science & Phys. Ed.
V-Club, 2, 3, 4
Football, 1, 2
Basketball, 1, 2, 3, 4
Baseball, 1, 2, 3
Beta Beta Beta, 3, 4
Sigma Nu, 3, 4



KENNETH A. MEYERS
Kansas City, Missouri
Alpha Psi Omega, 4
D. A. C., 2, 3, 4
Alpha Sigma Phi.-HES- 2, HM-3,
HP-4
Member of "House of Vivid", 3, 4
Cheerleader, 2, 3
Delta Business Manager, 2, 3



MARVIN VICTOR NEWTON
Tina, Missouri
Major: Business Administration
Science Club, 2, Pres., 3, 4
Business Club, 2, 3, 4
Honor Roll 1 2, 3, 4



KENNETH D. OLIVER, JR.
Kirkwood, Missouri
Major: Music
Davidsbundler, 4
Student Chapter A. G. O., 4
(Sec.-Treasurer)
M. E. N. C., 4
A capella, 1
Vesper Choir, 1, 2, 3



DEAN NICHOLS
Marshall, Missouri
Major: Math
Alpha Phi Omega, 3, 4



JOHN NOLTE
Clinton, Missouri
Major: Psychology
A. P. O. 1, 2, 3, 4
Delta, 1
D. A. C., 1, 2
Men's Glee Club 4



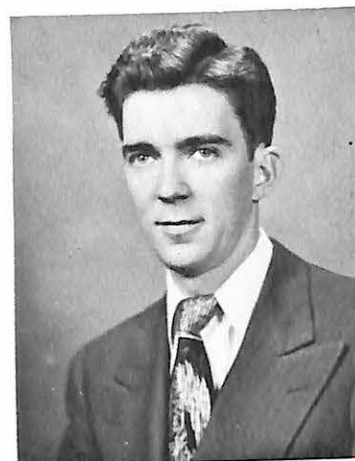
GERALD ORSCHELN
Moberly, Missouri
Major: Economics
Football, 4
Sec. & Treas. of Senior Class
Transferred: Northwestern U., 4



MARY LUCILLE PEDEN
Kansas City, Missouri
Major: B. A. in Psychology
Delta Zeta, 1, Pres., 2, 3, Rush
Capt., 4
Y. W. C. A., 1, 2, 3
Chi Alpha Omega, 1, 2, 3
D. A. C., 1, 4
Honor Scholarship, 1, 3
Student Union Committee, 2
Student Senate, 3



ROBERT C. REEP
Camden, Arkansas
Major: Music
American Guild of Organists, 1, 2,
3, 4
Davidsbundler, 2, 3, 4
Student Social Committee, 3, 4



WILLIAM R. REID
Fulton, Kentucky
Major: Psychology
Alpha Phi Omega, 1, 2, 3, 4
Student Union Committee, 1, 2, 3



ROY A. PRESTON
Carrollton, Missouri
Major: Physical Education
V-Club, 1, 2, 3, 4
Student Senate, 1
Football, 1, 2, 3, 4



JUNE RENYOLDS
Marshall, Missouri
Major: Art
Transferred: Kansas City Art
Institute, 3



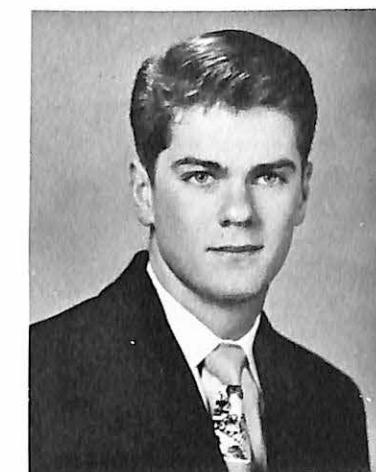
CHARLES LEE ROBBINS
Hickman Mills, Missouri
Major: Education, Math,
Physical Education
Football, 2, 3, 4
Track, 2, 3, 4
V-Club, 2, 3, 4
Student Senate, 4
Intermural Senior Manager, 4
Dean's Honor List, 1
Silliman Scholarship, 2, 3, 4
Student Ass't, 3
Beta Beta Beta, 4



BARBARA JEAN
SCHAEPERKOETTER
Corder, Missouri
Major: Education, Music
A capella Choir, 1, 2, 3, 4
Vesper Choir, 1, 2, 3, 4
Band, 1, 2, 3, 4
Orchestra, 1, 2
Y. W. C. A., 1, 2
W. A. A., 1, 2, 3
W. S. G. A. Treas., 2, Pres., 3



CLYDE KENNETH SARGENT
Marshall, Missouri
Major: Business Administration



JOE SAUPE
Marshall Missouri
Major: Mathematics
V-Club, 2, 3
Sigma Nu, 2, 3
Student Senate, 3
Tennis, 1, 2, 3
Basketball, 1, 2
Class President, 1, 3
Sigma Nu Officer, 3
Student Senate Treasurer, 3
Honor Roll



J. LAWRENCE SEMAR
Park Ridge, Illinois
Major: Physical Education
Football, 1, 2,
Athletic Trainer, 3, 4



MARTHA ANN SERKOWSKI
North Chicago, Illinois
Major: Math
W. A. A., 2
W. S. G. A., 1
Beta Beta Beta, 2, 3, 4
Delta Zeta, 2, 3, Pres., 4
Y. W. C. A., 2



JOHN SIMMONS
Marshall, Missouri
Major: Business Administration



DICKEY DALTON SIMPSON
Eolia, Missouri
Major: History
Sigma Nu, 3, 4



EARL A. SHAW
Meade, Kansas
Major: Education
Alpha Phi Omega, 4
Student Christian Association, 4
Men's Glee Club, 4
A capella Choir, 4
Transferred: Kansas State U., 4



DALE ARWYN SKELTON
Marshall, Missouri
Major: Business Administration
Basketball, 4
V-Club, 4
Transferred: U. of Missouri, 4



FREDRICK A. SKINNER
Chicago, Illinois
Major: Science, Education
V-Club, 1, 2, 3, Pres., 4
Beta Beta Beta, 3, 4
Sigma Nu, 3, Lt. Commander, 4
Football, 1, 2, 3, Co-Capt., 4
Pres. of Sophomore Class
Freshman Senator
Who's Who, 4
Member "House of Vivid", 2, 3, 4



ERNEST DANIAL SPAULDING
Kansas City, Kansas
Major: Business Administration
Alpha Sigma Phi, 4
Transferred: Kansas City Jr.
College, 4



FRANK HAYNES SLEEPER
LaGrange, Illinois
Major: Business Administration
Alpha Sigma Phi, 3, 4
Pres. of New Dorm, 4
Student Senate Social
Committee, 4
Transferred: U. of Arkansas, 3



ALEX SMITH
Marshall, Missouri
Major: Business Administration



WILLIAM D. SPEISE
Kansas City, Missouri
Major: Education, Biology,
Physical Education
V-Club, 2, 3, Vive-Pres., 4
Beta Beta Beta, 2, 3, Treas., 4
Football, 2, 3, 4
Track, 2, 3
Baseball, 2
Transferred: Kansas City Jr.
College, 2



ALBERT J. STAUCH
Chicago, Illinois
Major: Physical Education
Transferred: U. of Illinois, 3



JAMES H. STONER
Marshall, Missouri
Major: Mathematics
Transferred from Central, 3



CHARLES SWISHER
Marshall, Missouri
Major: Business Administration



JOHN STEWART
Chicago, Illinois
Major: Education, Social Science
Football, 2, 3, 4
V-Club, 2, 3, 4
Dorm Pres. 4
Sigma Nu, 2, Lt Commander, 3, 4
Transferred: Wright Jr. College,
2



NICK L. TARAL
Washington, Illinois
Major: Human Relations
Alpha Phi Omega, 2, 3, 4
Vesper Choir, 4
Band, 4
Acapella Choir, 4
Chapel Choir, 4
Student Christian Association,
Vice Pres., 4
Transferred: U. of Illinois, 4



HAROLD G. THAYER
Marshall, Missouri
Major: Biology & Education
Alpha Sigma Phi, 3, Pres., 4
Beta Beta Beta, 2, Pres. 3, 4



JAMES R. THOMAS
Marshall, Missouri
Major: Biology
Beta Beta Beta, 2, 3, 4
Vesper Choir, 2, 3, 4
Band, 1, 2, 3, 4



DONALD B. THOMAS
Cheshire, Ohio
Major: Education, Speech
A capella, 2, 3
Vesper Choir, 2
D. A. C. Vice-Pres., 2, Pres., 3,
Vice-Pres., 4
Alpha Phi Omega, 4
Willoughby Prize, 3
Transferred from Rio Grande
College, 2



JAMES E. THOMAS
Marshall Missouri
Major: Mathematics



EARL R. TUERS, JR.
Franklin, Nebraska
Major: Human Relations
Alpha Phi Omega, 4
Student Christian Association, 4
Men's Glee Club, 4
Transferred: Nebraska Wesleyan
U., 4



WILLIAM CHARLES WARD
Chicago, Illinois
Major: Business Administration
Delta Staff, 3
Commerce Club, 4
Sigma Nu, 1, 2, 3, 4
University of Illinois, 3



FLORENCE E. WHITNEY
St. Louis, Missouri
Major: English
A capella Choir, 1, 2, 3, 4
Vesper Choir, 1, 2, 3, 4
Y. W. C. A., 1, 2
Chi Alpha Omega, 1, 2



RALPH E. WIENKE
Danville, Illinois
Major: Business Administration
Alpha Phi Omega, 1, Pres., 2, 3
D. A. C., 1
Sigma Tau Delta, 3
Delta, 1, 3
Sabaduri, 1
Alpha Sigma Phi, 3, 4
Book Store Manager, 3, 4



FRED POPE WHITE
Kirkwood, Missouri
Major: Human Relations
Student Christian Association, 4
Alpha Phi Omega, 4
International Relations Club, 4
Delta Sports Editor
Transferred from Drury, 4



WILLIAM F. WOCKENFUß
Union, New Jersey
Major: English
Band, 1, 2, 3, 4
D. A. C., 1, 2, 3, 4
Vesper Choir, 1, 2
Delta Staff, 1
Alpha Psi Omega, 4
Sigma Tau Delta, 4



HOMER YEATER
Albany, Missouri
Major: Business Administration

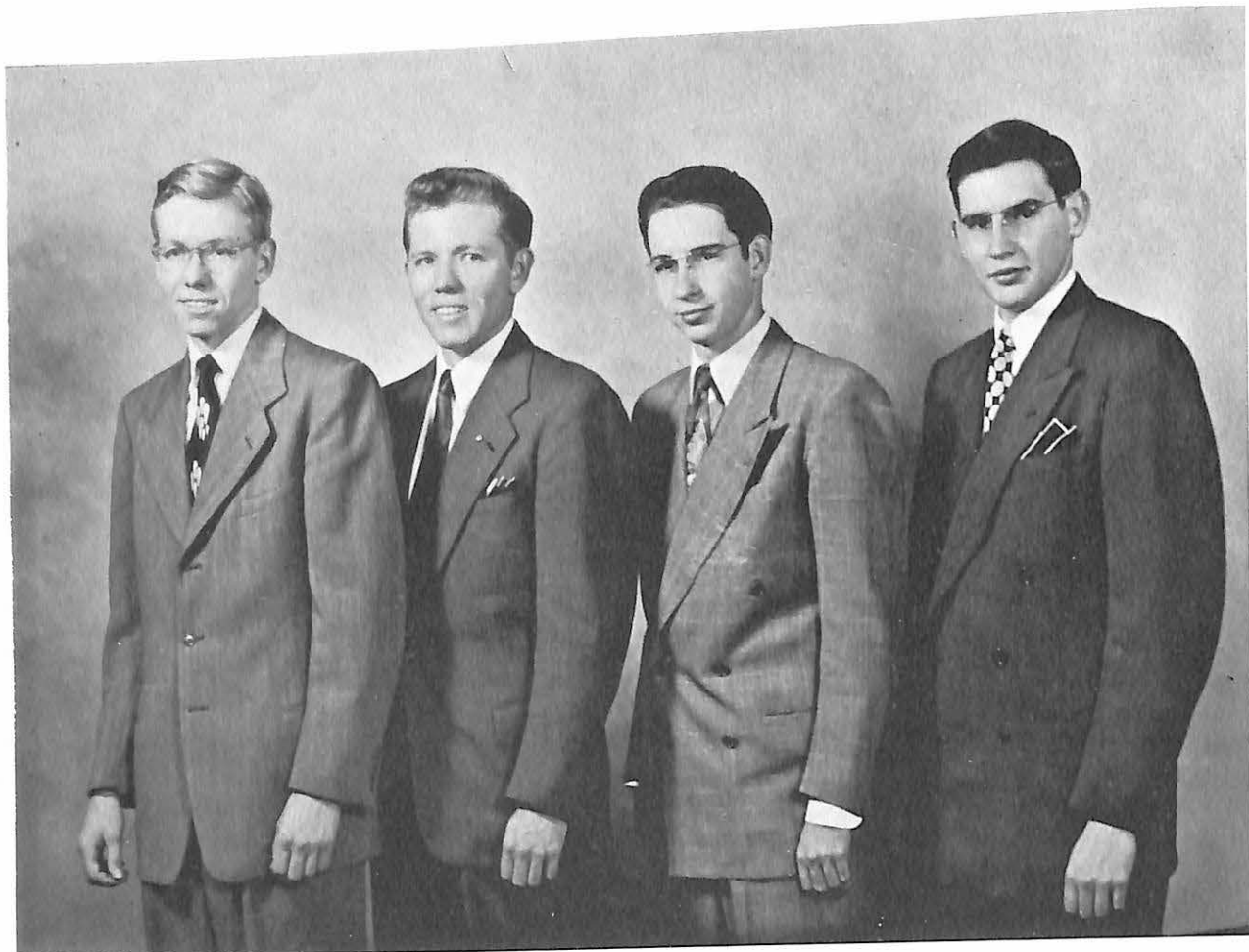


ROBERT LLOYD ZAHN
Marshall, Missouri
Major, Chemistry
Alpha Sigma Phi, 2, 3, 4



KWAI LUM YOUNG
Honolulu, Hawaii
Major: Biology
Alpha Sigma Phi, 3, Vice-Pres., 4
Beta Beta Beta, 4
Student Senate, 4
Transferred: U. of Hawaii, 3

Hoffhite Quartet



First Tenor -- Bill Hoffman (Sr.)
Second Tenor -- Henry Hoffman (Sr.)
Baritone -- Lee Wilhite (Jr.)
Second Base -- Alan Wilhite (Jr.)

This quartet was organized on the spur of the moment one night in the Fall of 1947. It has functioned as an independent quartet since that time, although most of the concerts given have been at the college or in the college's interests. It accompanies the Men's Glee Club and the A capella Choir on concert tours giving short "breather" concerts. The quartet has appeared in the chapel services several times during the past year, and has been active in singing for alumni gatherings of the college.

Most of the numbers used are of the old-fashioned type: hymns, spirituals, old humor with a bit of barbershop now and then. Their two favorite songs are: "Brudder Brown" and "Baby Sitters' Lament."



Junior Queen



ABENSTEIN, RICHARD
Chicago, Ill.



AMOS, JAMES H.
Chicago, Ill.



ARONSON, JANE
Hibbing, Minn.



ARONSON, JULIA
Hibbing, Minn.



ASHINHURST, JUNIOR
Marshall, Mo.



AUSTIN, CURTIS
Lanesboro, Minn.



BALLEW, ROBERT
Marshall, Mo.



BEISSEHERZ, RICHARD
Wellington, Mo.



BESS, ELEANORE
Sedalia, Mo.



BINGMAN, RICHARD
Golden City, Mo.



BREDBERG, AUDRAE
Lake Geneva, Wis.



BROOKS, MAC
Marshall, Mo.



BROWN, DONALD
Holden, Mo.



CARROTHERS, MARY
Oak Park, Ill.



COLE, MARTHA ELLEN
Kansas City, Mo.

COMPTON, ROBERT
Cameron, Mo.



FERGUSON, CHARLES
Chicago, Ill.



FIDLER, DELMAR
Marshall, Mo.



FLETCHER, WALKER
Marshall, Mo.



FRENCH, ARTHUR
Casper, Wyo.





GANN, DELMAR
Marshall, Mo.



GERHARDT, DORIS
Kansas City, Mo.



HAINS, LENORA ANN
Marshall, Mo.



HALL, RICHARD H.
Oak Park, Ill.



HERBON, JAMES EARL
Evanston, Ill.



HOUGH, LOIS FRANCES
St. Louis, Mo.



HUFF, CHARLES
Burlington, Kansas



HUNKER, JUNE JONES
Marshall, Mo.



IZARD, LESLIE
Kansas City, Kansas



KAISER, FRANK
Fulton, Mo.



KERR, LELAND
De Soto, Mo.



KILP, ROSALIE
Miami, Mo.



KRUEGER, EARNEST
St. Louis, Mo.



LAMAR, MARTHA
Weston, Mo.



LARCHEID, LYLE
Milwaukee, Wisc.



LEWIS, JOHN ROBERT
Kansas City, Mo.



LIGGETT, FRANK
Kansas City, Mo.



LINN, LOUIS G.
Kansas City, Mo.



LOCKRIDGE, CHRISTINE
Hardin, Mo.



LUETHGE, GEORGE
St. Louis, Mo.



McKENZIE, BRUCE
St. Paul, Minn.



MAGUIRE, ROBERT
Chicago, Ill.



MOORE, JOHN
Macon, Mo.



NELSON, HOMER
Boody, Ill.



PEARSON, CHARLES
Garfield, Kansas



PHILLIPS, HOMER R.
Parsons, Kansas



PHILLIPS, VERLYN
Parsons, Kansas



PRONGER, EARLE
Blue Island, Ill.



RASMUSSEN, JAMES
Cherokee, Iowa



ROCKHOLD, SHIRLEY
Hardin, Mo.



ROSE, WILLIAM
Wilmette, Ill.



ROSCHER, DOROTHEA
Marshall, Missouri



SCAVUZZO, LUKE
Harrisonville, Mo.



SCHEELE, RICK
Elgin, Ill.



SHIELDS, ROBERT
Omaha, Nebr.



SLAUGHTER, RICHARD
Evanston, Ill.



SMITH, NORMA JO
Marshall, Mo.



SOXMAN, KENNETH
Kansas City, Mo.



SPRIGG, JOHN MARVIN
Marshall, Mo.



STADE, CHARLES
Bellwood, Ill.



STANLEY, CARL
Evanston, Ill.



TABOR, BERT CARR
Minneapolis, Minn.



TEEGARDEN, CLIFFORD
Lawson, Mo.



THOMPSON, OWEN EDWARD
Webster Groves, Mo.



VAUGHN, CATHERINE
Marshall, Mo.



WHEELER, SHIRLEY
Chicago, Ill.



WHITTAKER, PATRICIA
Barnett, Mo.



WHYTE, JOHN
Joliet, Ill.



WHITWORTH, JAMES PORTER
Marshall, Mo.



WILHITE, ALAN
Belton, Mo.



WILHITE, LEE ANDERSON
Belton, Mo.



WIDMEIER, ROBERT WENDELL
Marshall, Mo.



WYCKOFF, ELMER
Marshall, Mo.



YOUNG, GWEN
Kansas City, Mo.



YOUNGER, PERRY
Marshall, Mo.



ZAVREL, MILLIE
Lincolnwood, Ill.

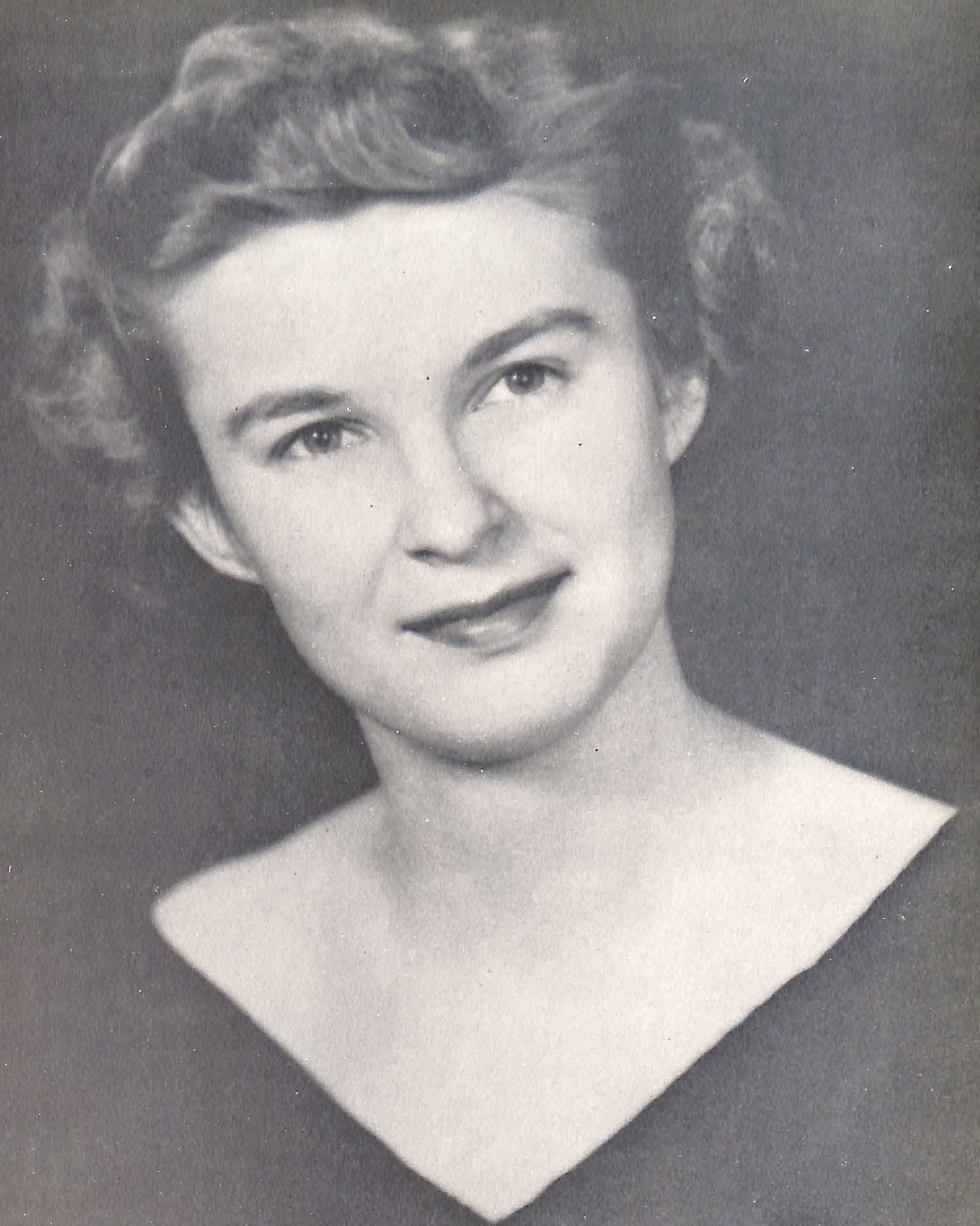


BELLE CAMPBELL HUFF, Litt. D.

So she won't think she's been forgotten by the students of Missouri Valley College, we, the students of the College would like to devote a full page of this year's Sabiduria to Belle Campbell Huff. One of the most likable and conscientious members of the faculty at Missouri Valley, Dr. Huff's recent illness was a blow to many of the students planning work under her this year, but all reports point to a banner year again next year with Dr. Huff and the knot-hole at work again.

Dr. Huff's first year as a faculty member at Missouri Valley was in 1906, and since then she has put in twenty-five years of teaching at Valley. She has also done extensive study and teaching abroad. The world is her doormat.

No matter what has gone before, we, who have sat in her classes, re proud to have been numbered among the members of the "ignoranti".



Sophomore Queen



ARNALL, FOREST
Kansas City, Mo.

BIRCH, WILLIAM
Slater, Mo.

ARNOLD, SALLY
Chestnut Hill, Mass.

RAY BLEAZARD
Marshall, Mo.



AUSTIN, WILLIAM
Independence, Mo.

BRANHAM, DON
Neosho, Mo.

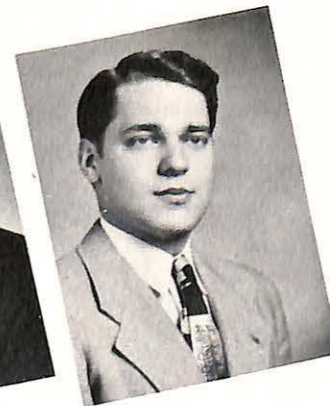
AXTATER, JUNE
Chicago, Illinois

BRINK, LOUISE
Marshall, Mo.



BEDELL, ROSCOE
Kansas City, Mo.

BRISLEY, JOANNE
Marshall, Mo.



BRUMBLE, JACK
Marshall, Mo.

COLA, ANGELA
Melrose Park, Ill.

BURT, BEVERLY
La Grange, Ill.

COWEN, DOUGLAS
Marshall, Mo.

CARSTENSON, BLUE
Kansas City, Mo.

DYER, JOHN
Marshall, Mo.

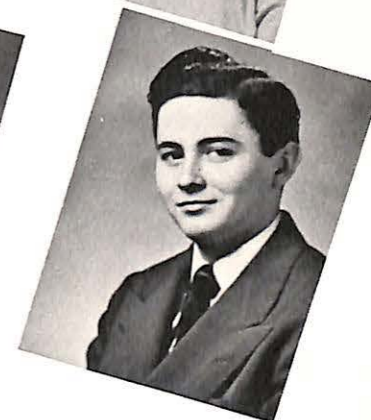
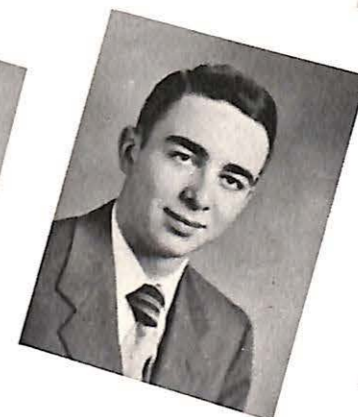
CARTER, MEREDITH
Marshall, Mo.

DYSART, VIRGINIA
Marshall, Mo.

CHOCKLEY, ROBERT
Rockford, Ill.

EARP, JAMES
Kansas City, Mo.

COFFELT, TED
Houstonia, Mo.





FAULKNER, NANCY
Alexandria, Va.

GUNTHER, WILLARD
Chicago, Ill.



FALVEY, RANDY
Chicago, Ill.

HEDDENS, KIMBER
Kansas City, Mo.



FEE, JOHN
Evanston, Ill.

HERNDON, JOHN
Blue Springs, Mo.



FERGUSON, DAN
Amarillo, Texas

HICKMAN, JEANETTE
Malta Bend, Mo.

FITZPATRICK, JAMES
Carrollton, Mo.

HISLE, ROBERT
Miami, Mo.

FOWLER, JOE
Harrisonville, Mo.



HORMAN, IRMA
Marshall, Mo.

KELLY, RICHARD
Highland Park, Ill.

HUSKEY, ELVIN
Marshall, Mo.

KILP, GERALD
Miami, Mo.

ILES, HERBERT
Lexington, Mo.

KRAUSE, JEAN
Blackburn, Mo.

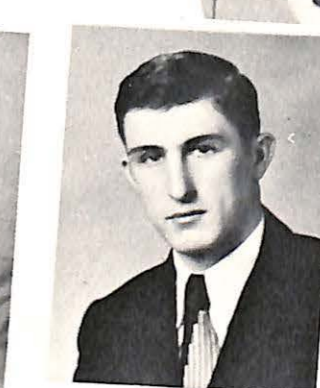
INGALLS, JOHN
Rockford, Ill.

KRUMSIEK, ROBERT
Marshall, Mo.

JENSEN, BARBARA
St. Louis, Mo.

LACY, WINIFRED
Chicago, Ill.

KAISER, WILLIAM
Harrison, N. Y.





LAY, BARBARA
Knob Noster, Mo.

NELSON, DEAN
Red Oak, Iowa

LILE, MARY BETH
Marshall, Mo.

NICHOLS, ROBERT
Kansas City, Mo.



LINZER, ROSALYN
Chicago, Ill.

ODOM, BRUCE
Oak Park, Ill.

LOVERCAMP, FRED
Sweet Springs, Mo.

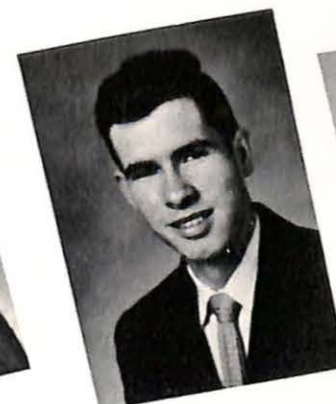
PERRYMAN, LEONARD
Marshall, Mo.

McEuen, RICHARD
Hannibal, Mo.

REID, BARBARA
Marshall, Mo.



MUEHLENBROCK, CAROL
St. Louis, Mo.



RITTERBUSCH, FERN
Marshall, Mo.

SIGMAN, VAN
Marshall, Mo.

ROSCHER, RODDY
Marshall, Mo.

SMITH, RAY
Brookfield, Mo.

SANNEMAN, CHARLES
E. St. Louis, Mo.

STEELE, ROBERT
Kansas City, Mo.

SCHMID, ANITA
Skokie, Ill.

TIPTON, FRANK
Neosho, Mo.

SCHUPP, FRITZ
Blackwater, Mo.

VERS, HELEN
Marshall, Mo.

SCHWEIGERDT, FRED
Chicago, Ill.





WELCH, DICK
Highland Park, Ill.

WRIGHT, TIM
Chicago, Ill.

WHEELER, ARNOLD
Emporia, Kansas

YANCEY, WALLIS
Marshall, Mo.

WILEY, HENRY
Sedalia, Mo.

YOUNG, BETTY
Marshall, Mo.

WILSON, JACK
Marshall, Mo.



Freshman Queen



AMIDEI, ROGER
Highland Park, Ill.



BAILEY, HALLIE
Orrick, Mo.



BARTLETT, RAYMOND
Crestwood, N. Y.



BECKEMEYER, HARLAN
Napoleon, Missouri



BEHNKE, DALE
Linn Creek, Mo.



BENNETTE, DONALD
Higginsville, Mo.



BRAND, JOHN
Western Springs, Ill.



BRENNAN, SHIRLEY
Kansas City, Mo.



BYBEE, BUDDY
Marshall, Mo.



CAGG, RUTH
Rolla, Mo.



CARROLL, ALAN
Excelsior Springs, Mo.



CARROLL, KENNETH
Excelsior Springs, Mo.



CARVER, JOHN
Western Springs, Ill.



CORODI, HOMER
Kansas City, Mo.



COXETER, WILLIAM
West Haven, Conn.



CLEMENTS, BETTY
Marshall, Mo.



DARNELL, ELENORA
El Dorado Springs, Mo.



DAUTENHAHN, DAVID
Cuba, Mo.



DAVIES, NORMA
Rye, N. Y.



DOWNS, JOYCE
Hot Springs, Ark.



DUPY, CHARLOTTE
Chillicothe, Mo.



DYSART, MARILYN
Independence, Mo.



EDWARDS, JOHN
Marshall, Mo.



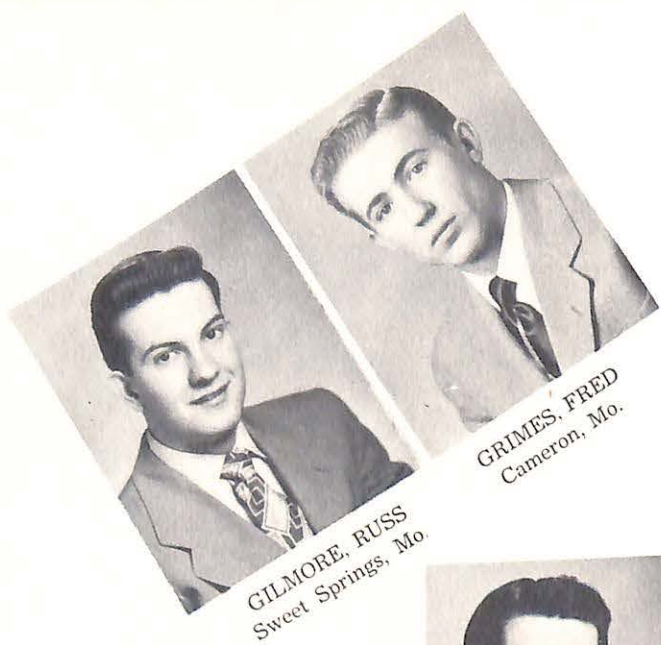
ERWIN, DONALD
Urish, Mo.



FISHER, ROBERT
Marshall, Mo.



GARRIGUES, JAMES
Great Bend, Kansas



GILMORE, RUSS
Sweet Springs, Mo.



GRIMES, FRED
Cameron, Mo.



HAINS, LAMAR
Marshall, Mo.



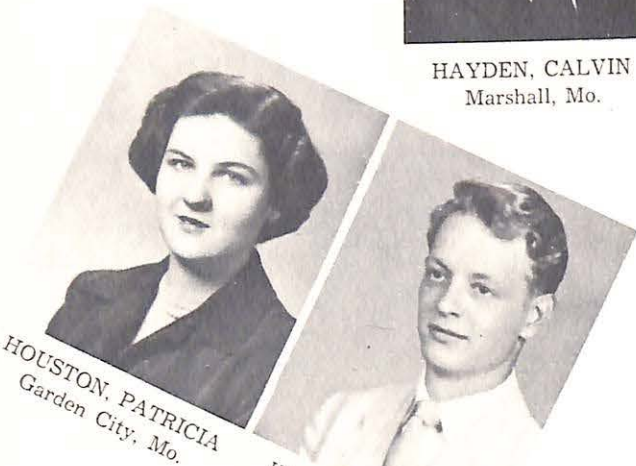
HANNA, FRED
Holden, Mo.



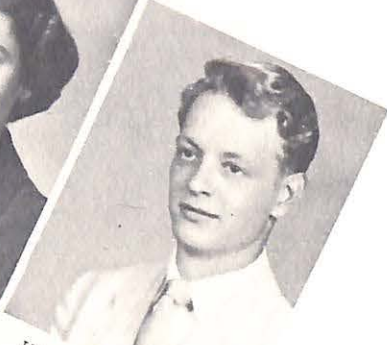
HAYDEN, CALVIN
Marshall, Mo.



HITT, ROBERT
Corder, Mo.



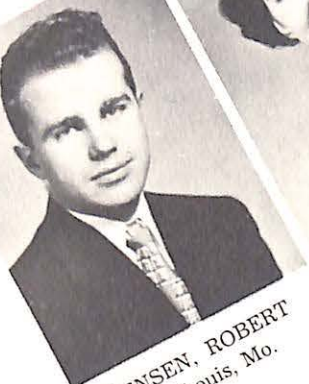
HOUSTON, PATRICIA
Garden City, Mo.



HOWELL, RALPH
Marshall, Mo.



JOHNSON, PATRICIA
Higginsville, Mo.



JENSEN, ROBERT
St. Louis, Mo.



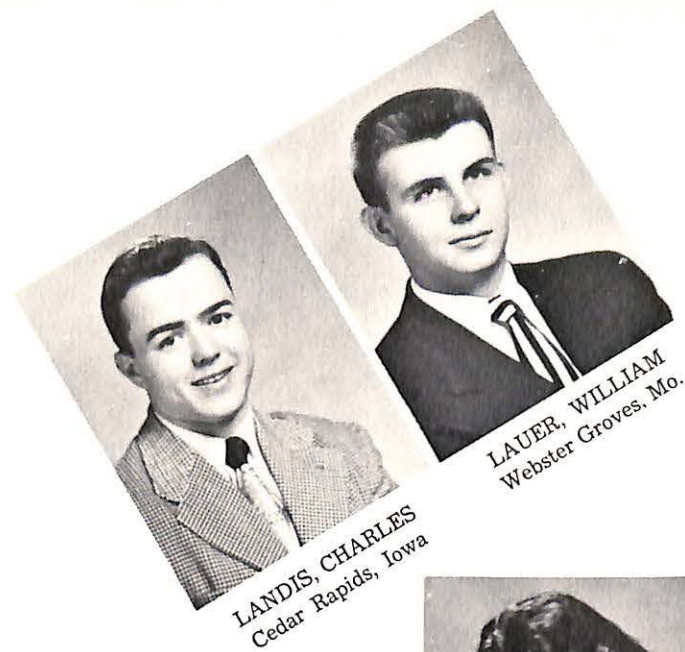
JOHNSON, WARREN
Chicago, Ill.



KRAUSE, JOHN
Brookfield, Mo.



LIDLAW, JOHN
Marshall, Mo.



LANDIS, CHARLES
Cedar Rapids, Iowa



LAUER, WILLIAM
Webster Groves, Mo.



MARKLAND, JAMES
Holden, Mo.



MATHENY, RUTH
Marshall, Mo.



MATHES, BETTY
Kansas City, Mo.



McQUIDDY, ROBERT
Marshall, Mo.



MELLIS, BILL
St. Louis, Mo.



MOORE, WARD
Macon, Mo.



MORGAN, FERN
Marshall, Mo.



PERRY, LEWIS
La Plata, Mo.



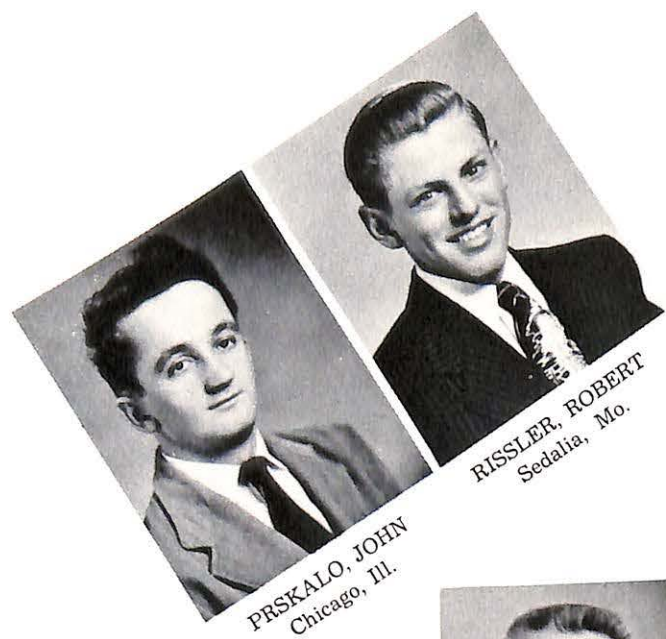
PETERSON, NORMA
Kansas City, Mo.



PHILLIPS, JEANNIE
Marshall, Mo.

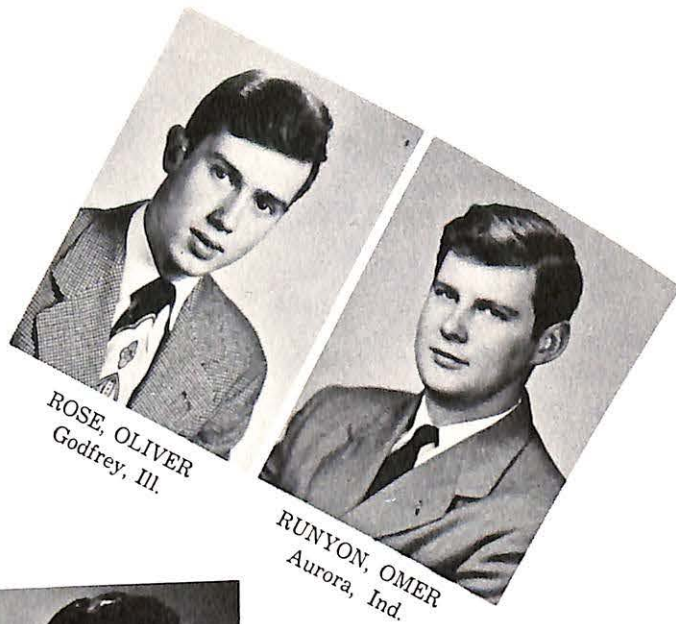


PLESSINGER, CECIL
Cheyenne Wells, Colo.



PRSKALO, JOHN
Chicago, Ill.

RISSLER, ROBERT
Sedalia, Mo.



ROSE, OLIVER
Godfrey, Ill.

RUNYON, OMER
Aurora, Ind.



SAATHOFF, RICHARD
Marshall, Mo.

SCHAEPERKOETTER,
CHARLES
Corder, Mo.



SCHUETTE, DONALD
Blackburn, Mo.

SHUMATE, MARY ANN
Orrick, Mo.



SIDER, BARBARA
Chicago, Ill.

SIEGEL, JOEL
Highland Park, Ill.



SIMMONS, CLYDE
Kansas City, Mo.



SIMMS, ROBERT
Sugar Creek, Mo.



SKAGGS, CAROL
Kansas City, Mo.



SMITH, LELAND
Collins, Mo.

SMITH, LYNNIE
Collins, Mo.



SMITH, RICHARD
Middletown, R. I.

STANLEY, BILL
Evanston, Ill.



STONE, DAVID
Independence, Mo.

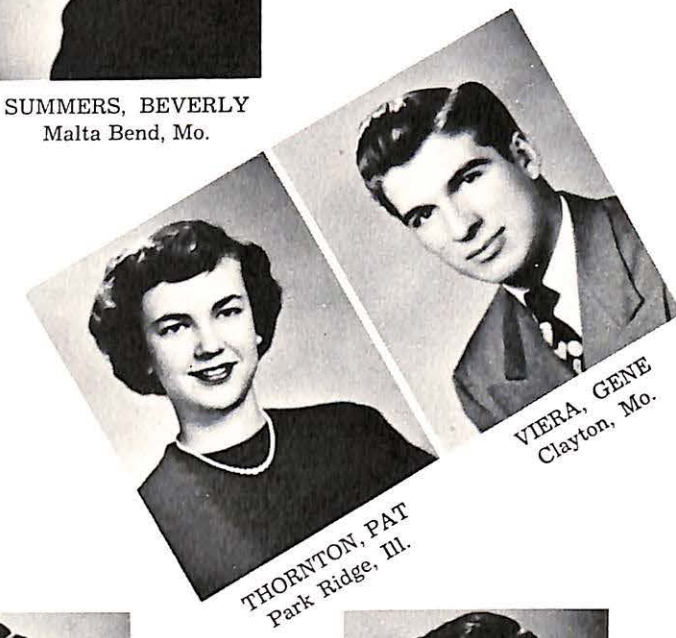


SUMMERS, BEVERLY
Malta Bend, Mo.



SUTTON, MARGARET
Marshall, Mo.

SWEGLES, JEAN
Sedalia, Mo.



THORNTON, PAT
Park Ridge, Ill.

VIERA, GENE
Clayton, Mo.



VOGEL, KATHRYN
Marshall, Mo.



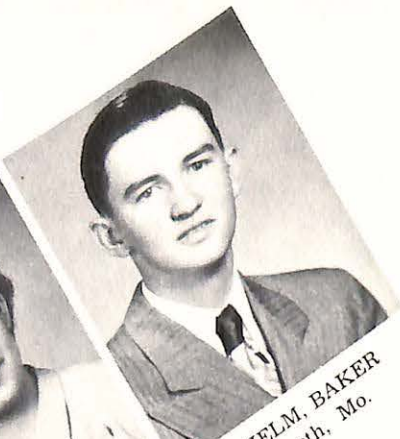
WADDELL, KENNETH
Grandfield, Ill.



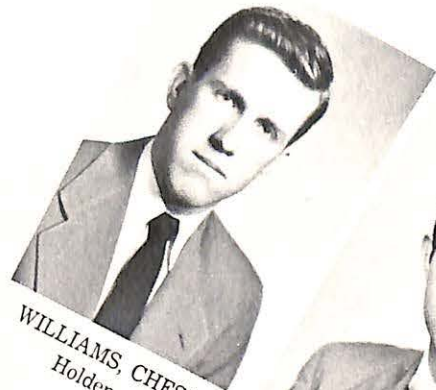
WALL, ROGER
E. St. Louis, Ill.



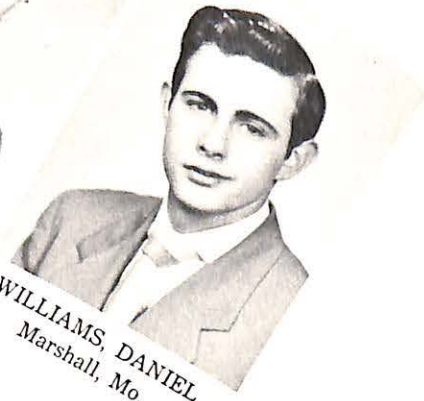
WEAVER, BARBARA
Independence, Mo.



WILHELM, BAKER
Bosworth, Mo.



WILLIAMS, CHESTER
Holden, Mo.



WILLIAMS, DANIEL
Marshall, Mo.



WILLIAMS, GERALDINE
Kansas City, Mo.



WISHARD, ROLLIE
Marshall, Mo.



WYRICK, ANN
Marshall, Mo.



Beta Beta Beta



Seated left to right: Hough, Lamar, Montag, Dr. Thomas, Serkowski, Kilp, Lockridge, Thayer.
Standing left to right: Young, Robbins, Thomas, Speise, Skinner, H. Hoffman, B. Hoffman Mitchell.

The Gamma Xi chapter of Beta Beta Beta, a national honorary biological fraternity, was granted a charter at Missouri Valley in 1929. Tri-Beta is a society for students with a major or minor in the biological science. Its purpose is to emphasize stimulation of sound scholarship, dissemination of scientific knowledge, and promotion of biological research.

The national fraternity publishes "Bois" a magazine devoted to biological papers of interest and research. Our members this year did work with choline and plant nutrients.

Members of chapters all over the world contribute to this magazine.

Membership is limited to those persons who expect to major or minor in the field of biology and who are making a B average in biology courses in which they are enrolled.

Regular meetings are held twice monthly, one of which is held in conjunction with the Science Club. These meetings are designed to cultivate intellectual interest in the natural sciences and to promote a better appreciation of the value of biological study.

OFFICERS

President	Harold Thayer
Vice-President	Leroy Mitchell
Secretary	Betty Jo Montag
Treasurer	Bill Speise
Historian	Fred Skinner
Advisor	Dr. Lawrence Thomas



Seated left to right: Johnson, Lile, Carrothers, Hough, Harvey, Donaghue, Atchley, Brennan.
Standing left to right: Jensen, Hawkins, Arnold, Thornton, Skaggs, Axtater, Bray, Lucas, Muehlenbrock, Ritterbusch, Phillips, Dysart.

Alpha Xi Delta

The Beta Omicron chapter of Alpha Xi Delta was installed on the Missouri Valley campus in the Fall of 1945. Since that time each year has brought an increase in activities of the group as a whole and of its individual members.

Social activities for the group began in early fall with Rush Week. A tea, an informal "Sweet Shoppe" party, and a formal banquet at Arrow Rock made the week filled with fun and cherished memories. Pledging ceremony soon followed and then thoughts turned to plans for homecoming. The Alpha Xi float won second prize, and the entrance to the football field, decorated by the pledges, also took second prize for campus decorations.

Active Alpha Xi's, together with pledges and alumnae members, brought Christmas cheer to the Saline County Home by presenting a short program of Christmas festivity and serving refreshments. A Christmas party and dinner was given for the group before Christmas vacation by Mrs. R. C. Haynes, with pledge mothers and daughters exchanging gifts.

The four months of the second semester were almost constantly filled with activity. Alpha Xi's helped in the March of Dimes campaign by soliciting the district

surrounding the college. Help was also given in the planning and decorating for the Greek letter dance in April. In mid-March the men of the faculty were entertained with a "coffee" given in the chapter room in Young Hall. Then of course there were parties and dinners for the group given by the alums and patronesses, and a dessert-bridge by Mrs. McAninch, our faculty sponsor.

A date party in the form of a barbeque and hay ride was given by the group in early spring. And as the old saying goes, "a good time was had by all." Other important highlights were the mixed parties between Alpha Xi and other Greek organizations on the campus and the traditional senior farewell breakfast before the close of the year.

As individuals Alpha Xi's are active in many campus activities. Many hold offices in organizations and five have been selected by the student body to be class queens and the harvest queen. In addition to these varied activities the chapter rates above average in scholastic standing.

This year, now past, has been an extremely successful one for Alpha Xi Delta, and all indications point to bright and successful future.

OFFICERS

President	Jane Donaghue
Vice-President	Betty Lucas
Recording Secretary	June Axtater
Corresponding Secretary	Carol Muehlenbrock
Treasurer	Elane Bray

Sigma Tau Delta



Jung, Angarola, Dingley, Bingman, Gerhardt, Gonder, Dr. Overall
Seated: Wockenfuss

Sigma Tau Delta, professional college English fraternity, was founded December 12, 1922, as the English Club of Dakota Wesleyan University, Mitchell, South Dakota. This fraternity was nationalized in May, 1924.

It seeks to promote the mastery of written expression, encourage worthwhile reading, and foster a spirit of fellowship among men and women professionally engaged in the study or teaching of the English language and of English literature. It endeavors to

stimulate among its members a desire to express life in terms of truth and beauty and to make firsthand contacts with our chief literary masterpieces. Active membership is limited to upperclassmen elected by the unanimous vote of the chapter on the basis of character, high scholarship, and demonstrated ability in creative writing.

The Nu Epsilon Chapter of Missouri Valley College was installed on March 12, 1950. Its charter members are:

Nadine W. Overall, Faculty Sponsor
Joseph Vincent Angarola
John Gordon Dingley
Doris Jean Gerhard
Glen William Gonder
Lily Jung
Ralph E. Wienke
William Fred Wockenfuss



1st row seated left to right: Downs, Vers, Cola, Matthes.
2nd row seated left to right: Peden, Rockhold, Wheeler, Serkowski, Mrs. Campuzano, Dupy, Williams.
3rd row left to right: Darnell, Weaver, Swegles, Davies, Houston, Gerhardt, Shumate, Dysart, Bess, Cagg, Jung, Burt.

Delta Zeta

Gamma Gamma Chapter of Delta Zeta was founded at Valley in 1945. It was, until that time, a local group known as Sigma Phi.

Delta Zeta has had an outstanding and successful year in 1949 and 1950. A Mardi Gras and the Annual Rose Banquet which is held at the Old Missouri Homestead made Rush Week something special. One of the largest pledge classes in chapter history was the happy result.

Late fall saw D. Z.'s working on a Student Directory; this was the most outstanding project of the year, while minor events filled out the calendar.

Regular activities and many informal parties gave Gamma Gama a happy and prosperous year. Christmas was celebrated with a

party in the chapter-room by the lights of the Christmas tree. Date parties and the Delta Zeta-Alph Sigma Phi picnic helped to fill out the spring semester. Later in the spring, the Alumni Association entertained the actives with a spaghetti dinner. The traditional Senior Breakfast was held in honor of these graduating seniors: Lily Jung, Mary Peden, and Martha Serkowski. This year one delegate will be sent to the convention to be held at Machinas Island, Michigan.

The success of the year is due, to a great extent, to the kindness and generosity of Mrs. Tadeo Campuzano, faculty advisor; Mrs. Willard Morton, Alumnae advisor; the Kansas City and Marshall Alumnae groups and the wonderful patrons and patronesses in Marshall.

OFFICERS

President Martha Serkowski
Vice-President Shirley Wheeler
Recording Secretary Doris Gerhardt
Treasurer Shirley Rockhold
Faculty Advisor Mrs. Tadeo Campuzano

Daidsbundler



Seated: Mrs. Dufford, Miss Powell.
Standing left to right: Dunlap, Bess, Hoffman, Drennan, Dingly, Oliver, Reep, Borgman.

The Daidsbundler Society is an organization for students in the field of music. Its purpose is to recognize outstanding achievement in music and to promote musical interest on the campus of Missouri Valley College.

Membership is limited to those persons having had three semesters of college work, and a B average in two semester hours of

applied music, as well as ranking in the upper thirty-five percent of the class in other subjects.

Each year two or more musical events are sponsored by the organization for the entire student body, faculty, and the public. During the second semester the group assisted in bringing the St. Olaf Choir in concert.

OFFICERS

President	Lewis Dunlap
Vice-President	Robert Reep
Secretary-Treasurer	Mrs. Betty Swisher
Corresponding Secretary	Eleanor Bess
Sponsors	Miss Evelyn Powell
	Mrs. R. T. Dufford



Seated left to right: Blackburn, Gerhard, Smith, Thayer, Dr. Ruyle, Meyers, Young, Cannon.
2nd row left to right: McGuire, DeKruyff, Bailey, Sleeper, Simmons, Fisher, Kent, Spaulding.
3rd row left to right: Weinke, Wheeler, Shields, Odom, Llewellyn, Izard, Ferguson, Rigdon, Berlin.

Alpha Sigma Phi

Alpha Omicron, the local chapter of Alpha Sigma Phi, was chartered in 1945 through the efforts of Dr. Charles Gerkhe, who was head of the chemistry department at Valley for several years and is now Province Chief for the state of Missouri.

During the last school year the Alpha Sigs have had several private dances, banquets, and other activities for its members, pledges, and their guests. In addition to its private affairs, Alpha Omicron supported the events on the all-school social calendar. That the Alpha Sigs are both enthusiastic and competent is evidenced by the fact that they are often called upon by the Social Committee to assist in its affairs.

The Alpha Sigs are active and many of them hold positions of leadership on the cam-

pus. John Blackburn was president of the student senate, and Frank Kent, Dub Erickson, Merle Berlin, and Kwai Lum Young were student senators during the year.

The chapter is proud of its advisor, Dr. Asa Ruyle, Jr., an Alpha Sig who is a professor of education at Valley, and a veteran pilot who saw service with the Air Force during World War II.

The chapter firmly believes in the general expansion program at Valley and looks forward to the day when it will have its own chapter house. Meanwhile, the members can look with pride upon the chapter's record of achievement and can expect many more happy hours on the campus of Missouri Valley College.

OFFICERS

President	Harold Thayer
Vice-President	Kwai Lum Young
Recorder	Bob Zahn
Treasurer	Bill Gerhard
Corresponding Secretary	Ray Smith

Chi Alpha



Seated left to right: Krueger, Sanneman, Belt, Luehrman, Dunlap.
Standing left to right: Landis, McEuen, Mr. Spaulding, Bess, Beckemeyer, Coxeter, Kaiser.

Near the end of the spring semester last year, the official name of Chi Alpha was chosen, along with the acceptance of a new Constitution. The organization has taken the place of the Chi Alpha Omega and unorganized Ministerial groups on this campus.

The primary purpose of this organization is to promote Christian fellowship among the students and to be of service to the churches of the community. A regular meeting is held every Wednesday evening at which members or visiting leaders take

charge of the discussions. We are trying to foresee and discuss some of the problems that we will meet in our work in the field of religion.

One member moved to Missouri University at Columbia in January; one new member has been accepted, and two others are to be received as active members soon.

We are always willing to do our best to assist in chapel services, worship services in any of the churches in town, or add an influence for Christ in any way we can.

Faculty Advisor James C. Spalding
President Ernest Luehrman
Vice-President James Belt, Jr.
Secretary-Treasurer Robert Sannemen



Front row, left to right: Simpson, McKinney, Skinner, Mr. Lamkin, C. Stanley, Fairbanks, Mitchell, Speise.
Second, row, left to right: W. Stanley, Windsor, Carlson, Fee, Ferguson, McGrath, Ward, Slaughter, Kean, Herbon, Davidson.
Third row, left to right: E. McAuley, Edwards, Thompson, Lewis, Carter, Smith, Carfeldt, Killoren, Julian, P. McAuley, Brooks, Erwin.

Sigma Nu

Sigma Nu, a national social fraternity, has been active on this campus since 1891. Beta Gamma of Sigma Nu was the twenty-ninth chapter to join the national organization and ably sponsored and blessed with good leadership, it has always lived up to the purpose of Sigma Nu - - honor, intellectual achievement and social development.

During the past year, Sigma Nu has been very active on the campus. A high scholastic average has been maintained and the fraternity has been well represented in all college extra-curricular activities. The editor and assistant editor of the student newspaper, The Delta, have been Sigma Nu's. Men of Beta Gamma have also been well represented in athletics, student government and scouting.

The fraternity, under the able leadership of Commander Carl Stanley, has been able to increase its membership to forty men. We have been fortunate to have been sponsored by Mr. Lamkin of the chemistry department and "Pop" Ferguson still lends his steady influence to Beta Gamma, his fraternity.

This year's social activities have been many and varied and in the future the fraternity plans for an Apache dance, a banquet and informal get-togethers.

Men of Beta Gamma have reason to be proud of their fraternity and though many are graduating this year, we are confident that the members will live up to the high standards that have come to be expected from Sigma Nu.

Commander Carl Stanley
Lt. Commander Fred Skinner
Treasurer William Fairbanks
Recorder Joe Saupe
Reporter Jim Herbon
Chaplain Herb McKinney
Marshall Dickey Simpson

Alpha Psi Omega



1st row left to right: Thomas, Bredberg, Meyers, DeKruyff, Scheele, Miss Eaton.
2nd row left to right: Fields, Odom, Boschen, Belt.

Alpha Psi Omega is the national honorary dramatic fraternity. Our cast, Theta Sigma, was organized this year. The fraternity is open to those students who have done meritorious work in the field of dramatics. Our meetings, in addition to being social, are

Faculty Advisor	Dr. Eaton
Cast Director	Richard DeKruyff
Cast Stage Manager	Richard Steele
Cast Business Manager	Nancy Faulkner
Cast Corresponding Secretary	William Wockenfuss

educative. Those members who excel in one or more phases of dramatics give lectures or demonstration of theatre technique. Alpha Psi Omega also works in cooperation with D. A. C. in presenting the plays on campus.



First row left to right: Smith, Rose Taral, Tabor, Holtgrewe, O'Dell, Straile.
Second row left to right: Prof. Hill, Wiley, L. Smith, Linn, Johnson, Turner, Blackburn, Kaiser, Ferguson, Ligget.
Third row left to right: Shaw, French, Stade, Rose, Teagarden, Prof. Banta, Bess, Dr. Kemp, Dr. Ruyle, Carstensen, W. Smith.
Fourth row left to right: Landis, Stone, Pearson, Whyte, Chandler, Younger, Wheeler, Rila, Westbrook.
Fifth row left to right: J. Shaw, Tuers, Huff, Larcheid, Lewis, Bartlett, Lovercamp, McKenzie, Falvey, Eacn.
Sixth row left to right: White, Groh, Wall, Koeller, Frohnen, Wienke, Olmon, Schaeperkoetter, Wilhte.

Alpha Phi Omega

Organized in the fall of 1946, Epsilon Epsilon chapter of Alpha Phi Omega received its charter in May, 1947. Since that time, it has expanded tremendously both in membership and in service projects rendered to Missouri Valley.

This is primarily a service organization; requisites for membership are previous affiliation with the Boy Scout movement, and the desire to render service to one's campus, community, and nation.

Epsilon Epsilon is one of over two-hundred chapters boasting a membership of over 25,000 actives and alumni.

Activities of Epsilon Epsilon have been many and varied and include: lowering and raising the campus flag each day, operating football concessions, ushering at stadium, assistance at receptions and during registration, sponsoring candle-light dances in the student union, sponsoring Ugly Man-Sag Queen contests, conducting drives for CARE and the Red Cross, blood donor service, community Christmas decorations, programs

at the Blosser Home for Crippled Children, furnishing scout masters for the Marshall troops, clearing of tennis courts, and labeling of all the trees on the campus.

Besides these service activities, an annual banquet and several fellowship dances, hay-rides, and other activities are held each year.

Epsilon Epsilon looks forward to continued growth in membership and expansion of its service program under the increased incentive provided by the newly-formed American Humanics Program.

Senior Faculty Advisor	Mr. W. H. Hill
President	Eugene C. Koeller
First Vice-President	Perry Younger
Second Vice-President	Earl Shaw
Treasurer	Bill Rose
Secretary	Burt Tabor
Corresponding Secretary	Leroy Johnson
Sgt. at Arms	Bruce McKenzie
Historian	Blue Carstenson
Alumni Secretary	Ralph Winkie

V-Club



Seated left to right: Dorrel, Skinner, Speise, McKinney, Coach Ashford.
 Second row left to right: Howell, Lingenfelder, Robbins, Mitchell, Hunt, Nelson, Saupe.
 Third row left to right: Mr. Lamkin, Anderson, Hendrix, Morrison, Rogers, Soxman.

The V-Club is composed of men who have participated and lettered in inter-collegiate athletic activities at Missouri Valley.

The purpose of the organization is to maintain and promote clean and wholesome athletics at Valley and to further the interests of the Vikings and its teams on all occasions.

The active V-Club members work in close harmony with the V-Club alumni. The annual reunion is one of the highlights of the year for both organizations. Many of the

stars of yesteryear can be seen gathered together in a group rehashing blocks, tackles, shots, etc.

As an active organization on the campus, the V-Club has sponsored an invitational high school basketball tournament, an invitational high school track meet, and an all-school dance in April. In addition, this year the club purchased an Eastman projector and film reviewer for the use of the athletic department.

OFFICERS

President	Fred Skinner
Vice-President	Bill Speise
Secretary-treasurer	Ralph Dorrel

Women's Student Government Association



Seated left to right: Jung, Muehlenbrock, Lacy, Zavrel, Carrothers, Harvey.
 Standing left to right: Lockridge, Axtater, Downs, Cola, Lamar.

The purpose of the W. S. G. A. is to govern the women students within the dormitory. This year has been a successful one under the leadership of Miss Davison, Dean of Women. A new constitution has been written for this year and has proved to be a workable and helpful guide in all decisions. Weekly meetings are held for judiciary purposes and a monthly Sunday morning breakfast is held each month.

The activities of the group began in the fall semester with a formal tea on October second, given for the Dean of Women and attended by the dormitory women and faculty members. The next project was that of decorating Young Hall for the homecoming festivities. Our decorations of a huge mammy washing and hanging up football players won second place among the dormitories.

As a prelude to the Christmas vacation the W. S. G. A. sponsored a Christmas party for the women students. There was a program

filled with variety and individual gifts for all from "Santa" were distributed.

The annual Skirt Hop was sponsored this year for the first time without outside financial help from the student senate. The Southeast Gymnasium was the scene of this traditional affair on February 11. The elective honors went to Tim Wright, King of Hearts, J. O. Markland, Frank Tipton, Charles Ferguson, and Dick Carlson as heartbeats.

A final formal tea was held in April for the installation of 1950-51 officers for all women's organizations on campus.

With the help of the council, Miss Davison, and Mrs. Van Natta the year ended with a good outlook for the future of the women's Student Government Association.

OFFICERS

President	Pat Harvey
Vice-President	Lily Jung
Secretary	Mary Carrothers
Treasurer	Carol Muehlenbrock

Gospel Team



Left to right: Stroud, Montag, Sanneman, Mr. Spaulding, Luehrman, McEuen, Kaiser, Lamar, Dr. Faurot.

Under the leadership of Bob Sanneman the Gospel Teams have had a very successful year. Three teams functioned and held services for many of the small churches around the Marshall area. An arrangement was made whereby the teams went regularly to Smith Chapel and Shiloh, and Bluelick was included in the regular itinerary. Bill Kaiser, Betty Jo Montag, and Pete Leuhrman

captained the teams.

This experience in leading worship and preaching has been valuable to the students, and the churches have appreciated having regular services. The funds of the organization go for some worthy cause at the end of each year, and the year is terminated with a picnic for all members and those who have helped with music and transportation.

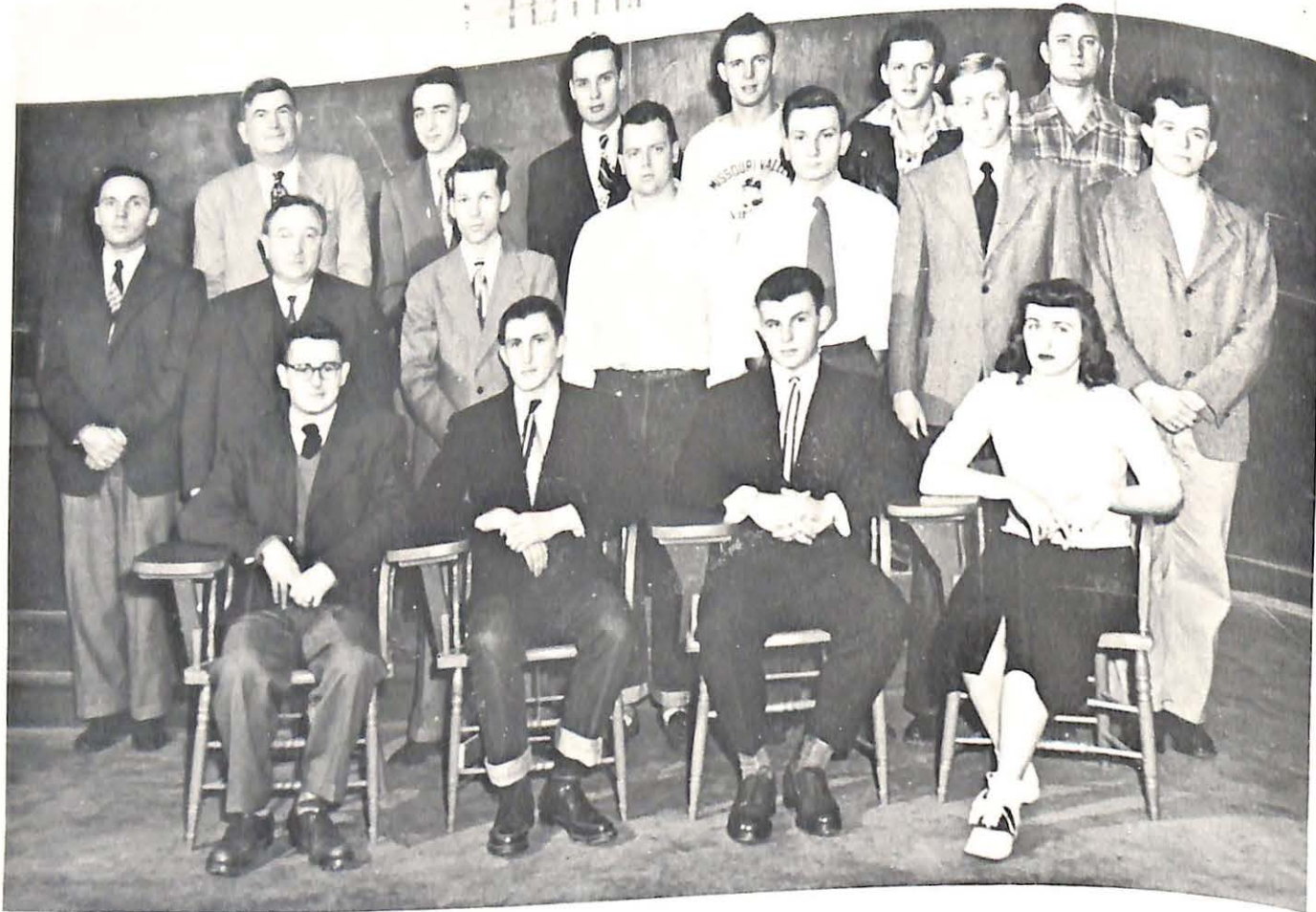


Seated left to right: Miss Eaton, Darnell, Linzer, Cola, Fields, Odom, Meyers, DeKruyff, Bredberg, Williams.
Standing left to right: Weaver, Herndon, Swegles, Cagg, Dysart, Stone, Falvey, Belt, Cole, Scheele, Downs, Thomas.

Dramatic Arts Club

This has been a year of growth for D. A. C. We have grown in membership, activities, and facilities. In addition to the two major productions presented in Stewart Chapel, D. A. C. has undertaken a series of broadcasts at station KMMO. For the first time we have our own theatre for rehearsals, and a workshop for design and construction of scenery. Our new director, Dr. Julia Eaton, came to us from Anderson College, Anderson, Indiana, where she was head of the speech department for seven years.

"Laura", a mystery-melodrama, by Vera Casperly was the first major production of the year, and with a grand performance by this cast as criteria, we begin work on the spring production, "Charley's Aunt", a popular comedy by Brandon Thomas.



Seated left to right: Schupp, J. Kilp, Lauer, R. Kilp.
 Second row left to right: Dr. Dufford, Newton, Fidler, Smith, Hoffman, Coxeter.
 Third row left to right: Mr. Lamkin, Dr. Thomas, Dyer, Wadell, Bingman, Dautenhahn, Thomas.

Throughout the year the science club has had many interesting and informative programs. Programs by local talent included a talk by Mr. Lamkin on working as an industrial chemist, an explanation of X-Ray by Dr. Dufford, an explanation on public address systems with respect to sound by Tom Doolley, and a program presented by Dr. Saupé on psychology.

Several outside speakers presented programs on varied subjects; Dr. Rudolph Bennett from Missouri University and the Missouri Conservation Commission, Mr. H. D.

Beeson from the Aluminum Company of America, and the Fiberglass Corporation all presented outstanding programs.

The Science Club was responsible for bringing two outstanding assemblies to the campus. The Bell Telephone assembly, "Here's Waving at You", presented by Mr. Richard Waggoner, was on the topic of transmission of sound waves. The DuPont assembly, presented by Mr. V. S. Peterson, "Progress in Better Living", explained the importance and progress of modern industrial chemistry.

OFFICERS

- President Fritz Schupp
- Vice-President Jerry Kilp
- Secretary-Treasurer Bill Lauer
- Program Chairman Delmer Fidler



Front row left to right: Bredberg, Roscher, N. J. Smith, Summers, Drennan, Thomas, Morgan, Bess, Linnie Smith, McDougal, Phillips, Wockenfuss, Mr. Hansen.
 Second row left to right: Atchley, Leland Smith, Laidlaw, Wall, Nolte, Eaton, Johnson, Dysart, Taral, Vers.
 Third row left to right: Saathoff, Lewis, McQuiddy, Erickson, Eckles, Clark, Matheny, Dingley, Belknap, McGuire, Cowen, Bleazard.

Band

The college band has had a busy year. During the football season it furnished music for several assemblies and pep rallies, and provided varied half-time entertainment for the home football games. On several occasions the band was host to visiting high school bands. Trips were made to Kansas City and Fayette. Other activities included leading the homecoming parade, participating in Armistice Day activities, and providing music for the dedication ceremony of Ferguson Hall and Casebolt Health Center.

During the remainder of the year the band has worked on concert music, and has provided training facilities for student conductors. A successful winter concert was presented, the proceeds of which were donated to the March of Dimes campaign.

Student Senate



Front row left to right: Robbins, Carrothers, Luschen, McAuley, Berlin.
 Second row left to right: Blackburn, Kent, Young.
 Third row: Thompson.

Social Life Committee



Left to right: Banta, Harvey, Reep, Hough, McKernan, Gerhardt, Sleeper, Falvey, Blackburn.

Vesper Choir



Front row left to right: Mr. Hansen, Whitney, Brereton, Martin, Jones, Darnell, Dupy, Williams, Stroud, Haines, Kilp, Swisher, Jane Aronson.
 Second row left to right: Liffing, Matheny, Vers, Hickman, Steen, Schaeperkoetter, Young, Julia Aronson, Dromey, Bess, Schuyler.
 Third row left to right: Chandler, Rissler, Shaw, Erwin, Llewellyn, Bingman, Oliver, Edmonds, Erickson, McQuiddy, Dingley.
 Fourth row left to right: McGuire, Wheeler, Belt, Carstenson, Lee Wilhite, Alan Wilhite, Harlan Hoffman, William Hoffman, Luehrman, Taral, Behnke.

The Vesper Choir has offered unrestricted opportunity to the students and townspeople to participate in singing much fine choral music, with the emphasis on sacred works. The Thanksgiving chapel service was high-lighted by the program of music presented by this choir. The major performance by the choir was the annual presentation of the major portion of Handel's oratorio, "The Messiah".

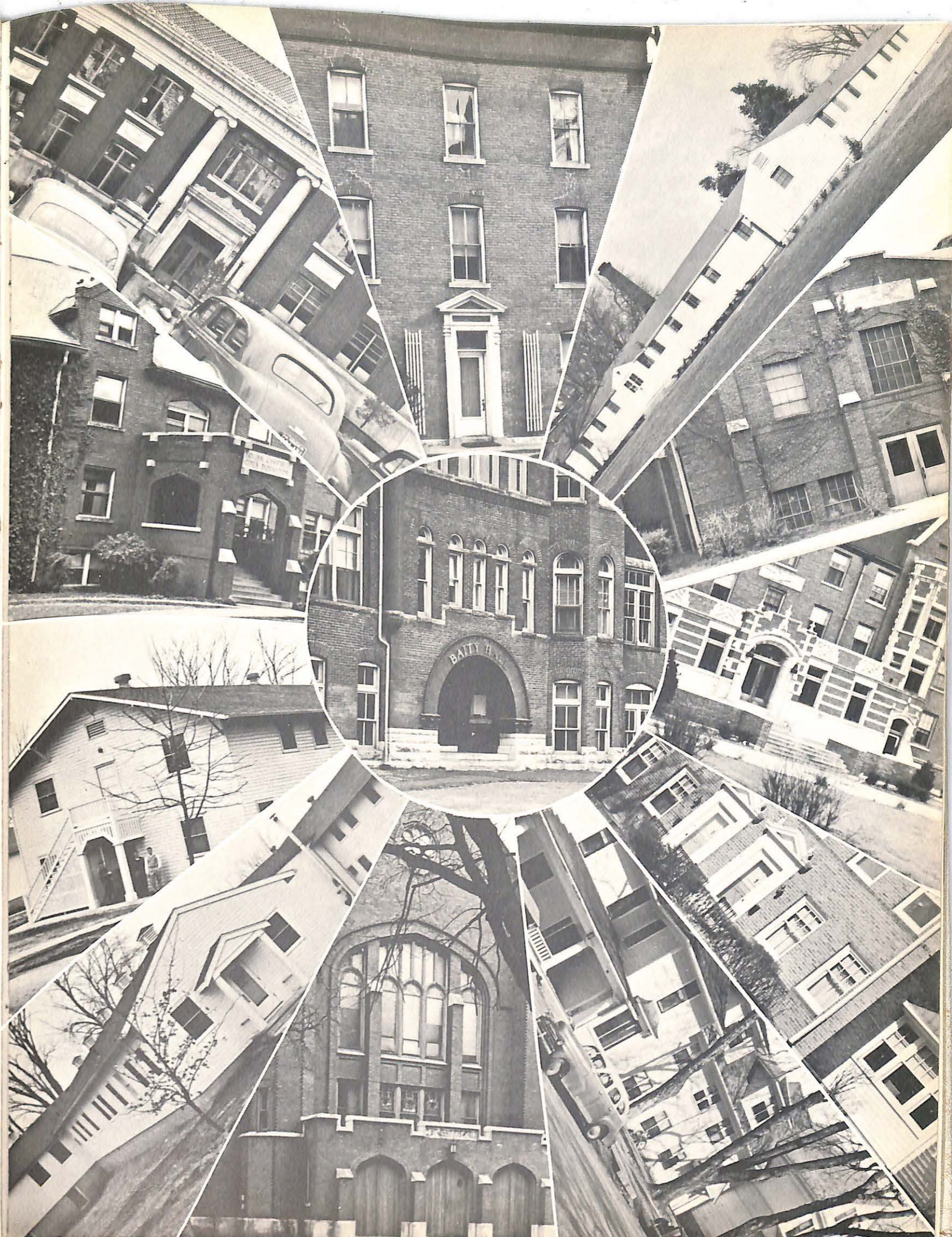
Delta Staff

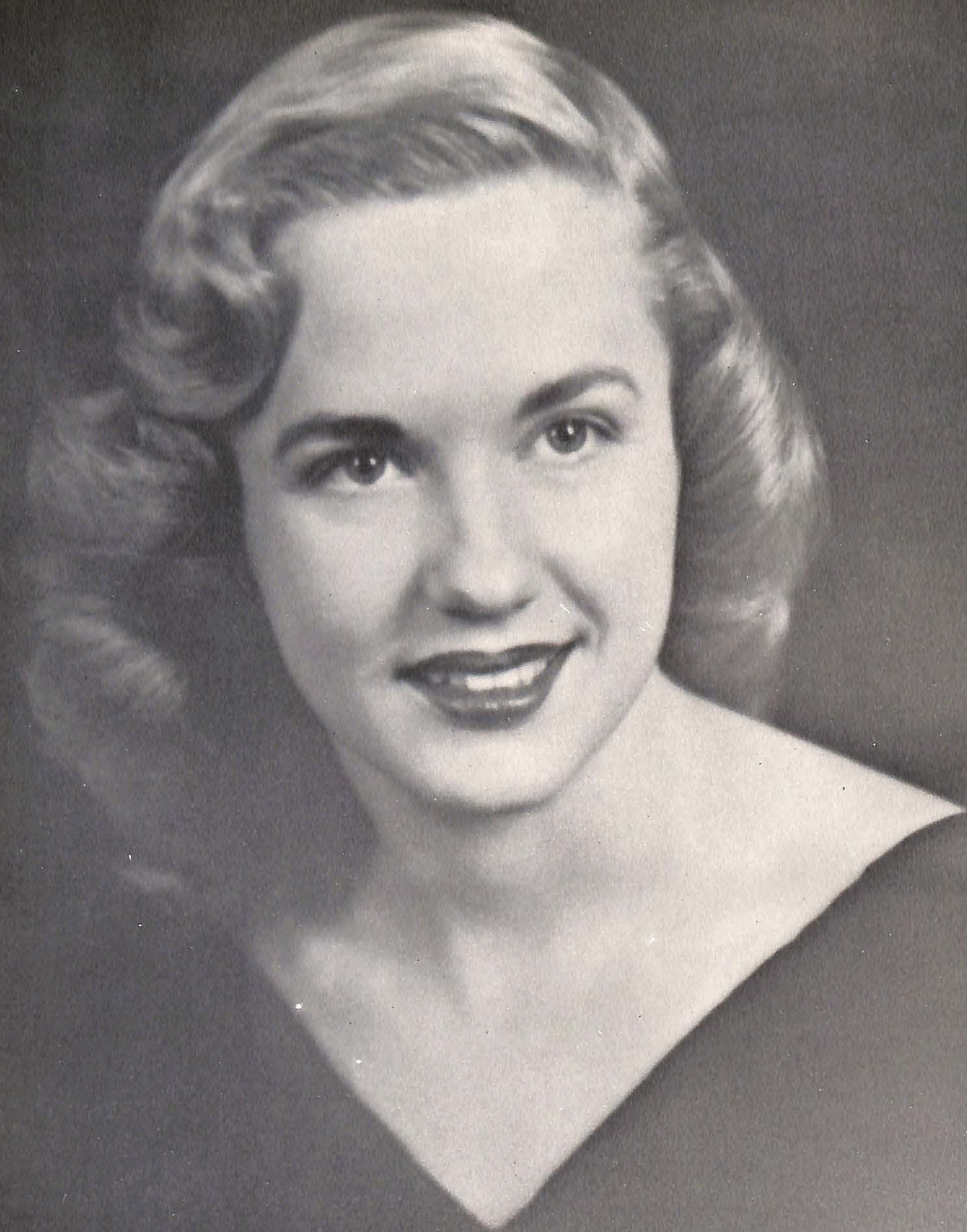


Standing left to right: Hamilton, Carstenson, Huff, Thompson, Falvey, McKenzie, Tabor.
Seated: Killoren, Ed., Herbon, Heddens, Bus. Mgr., Bredburg.

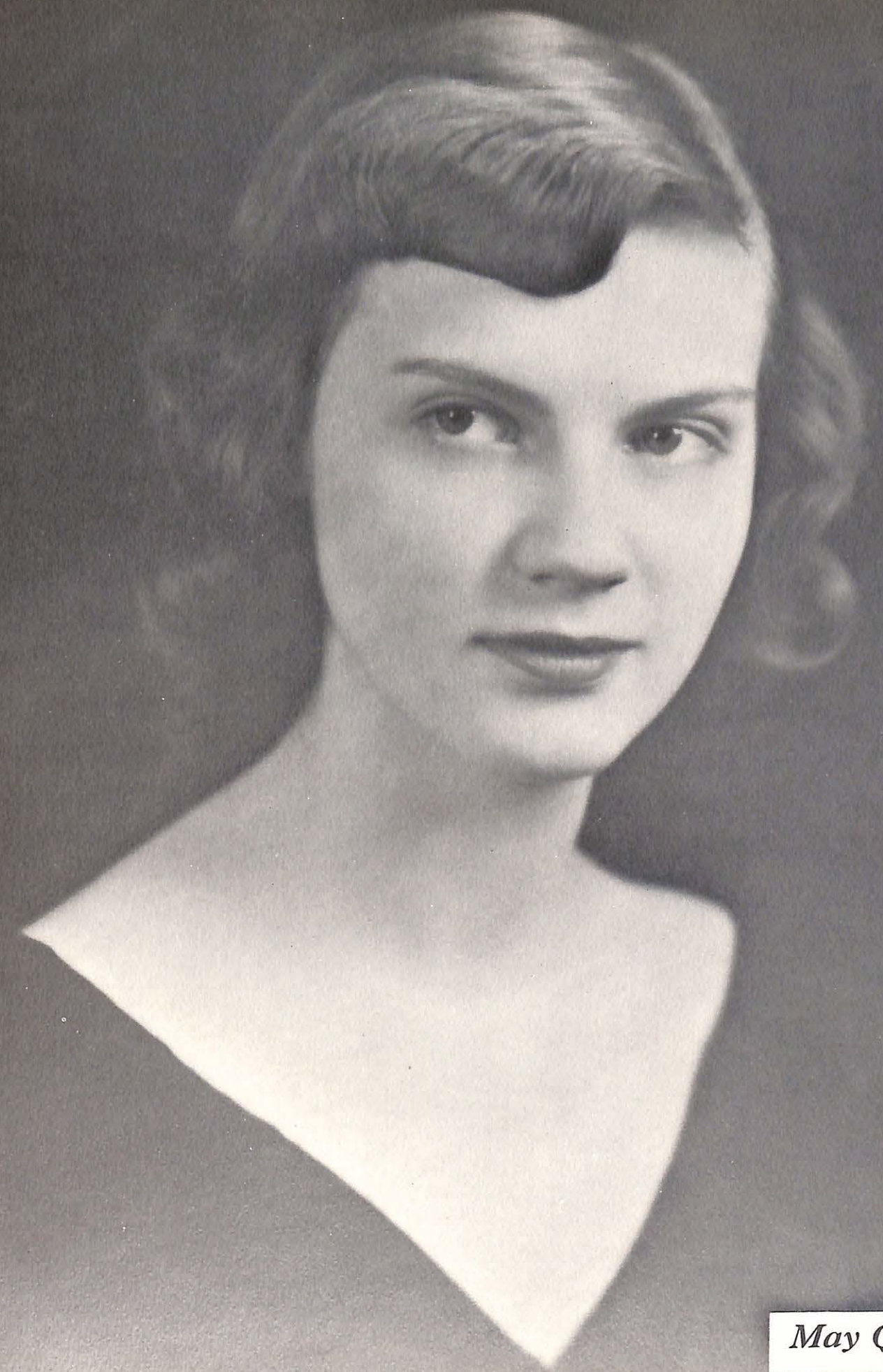


Herbon takes over.





Harvest Queen



May Queen



Skelton gawks, Hayob talks -- Bartle beams, Ashford gleams



Annual Quarterback "kick-in" dinner



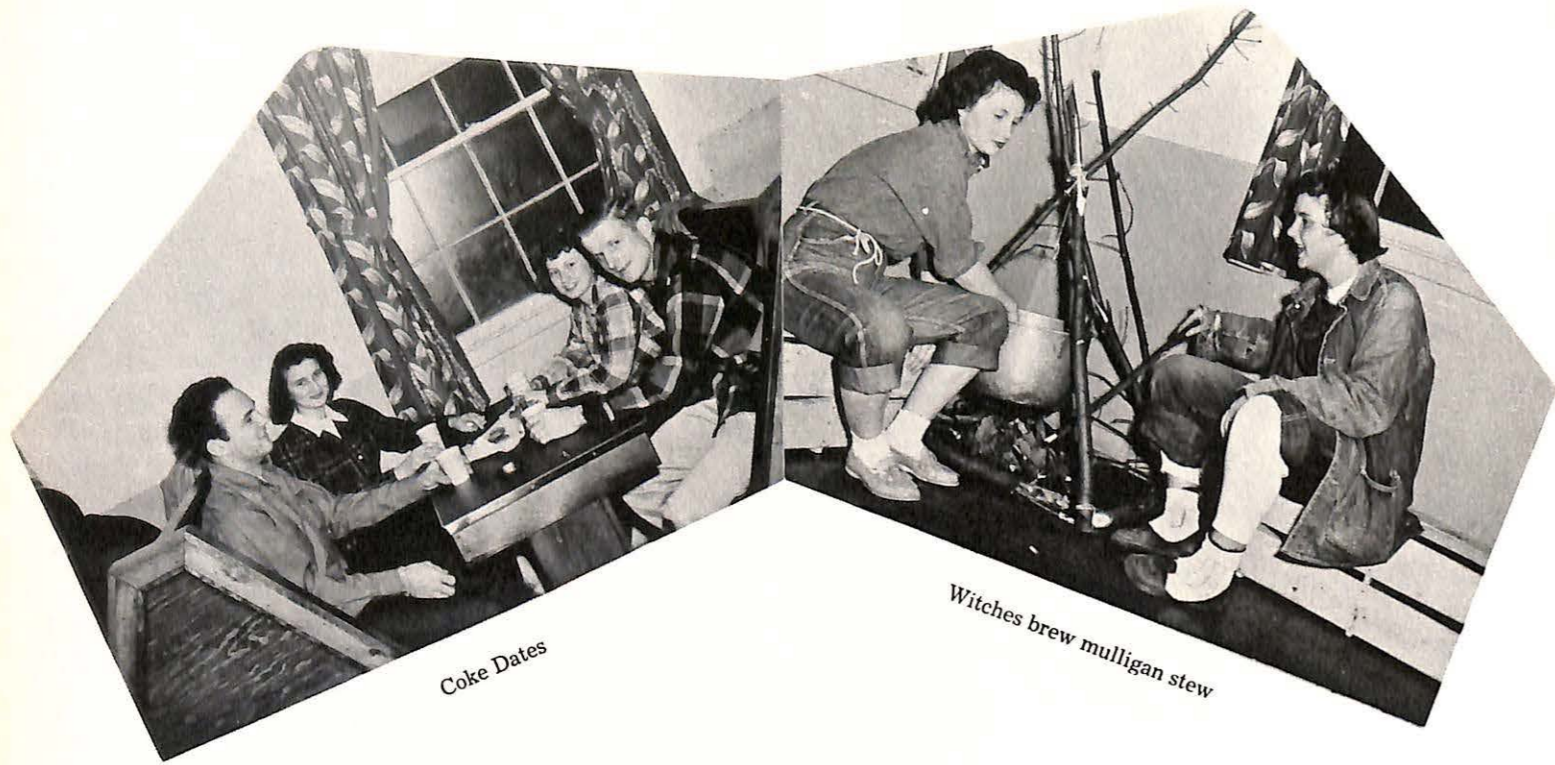
President's reception



That personal touch



"come in anytime"



Coke Dates

Witches brew mulligan stew



Receiving station

Big chief illustrator



Why Study?

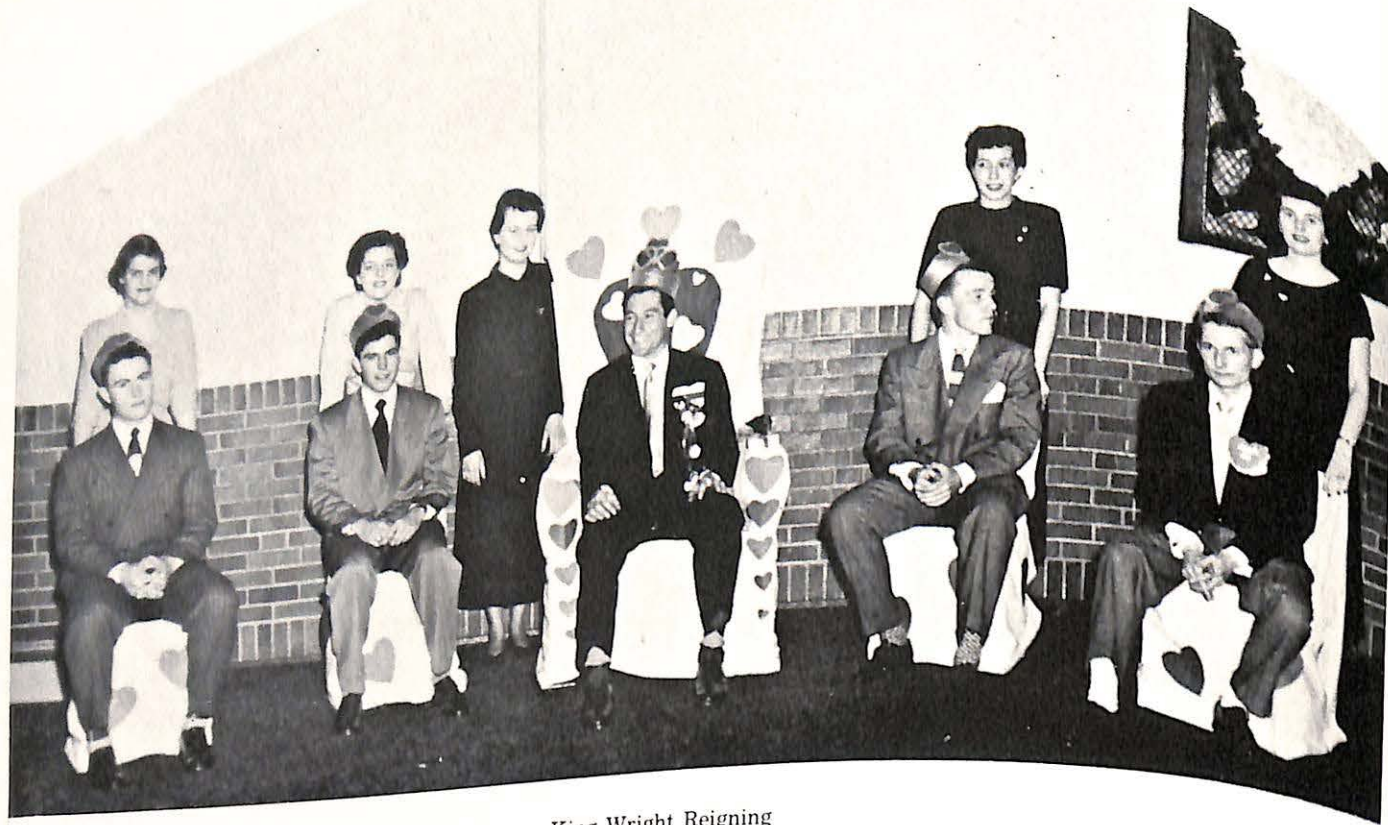


Intermission



Young Hall Christmas party

Skirt Hop



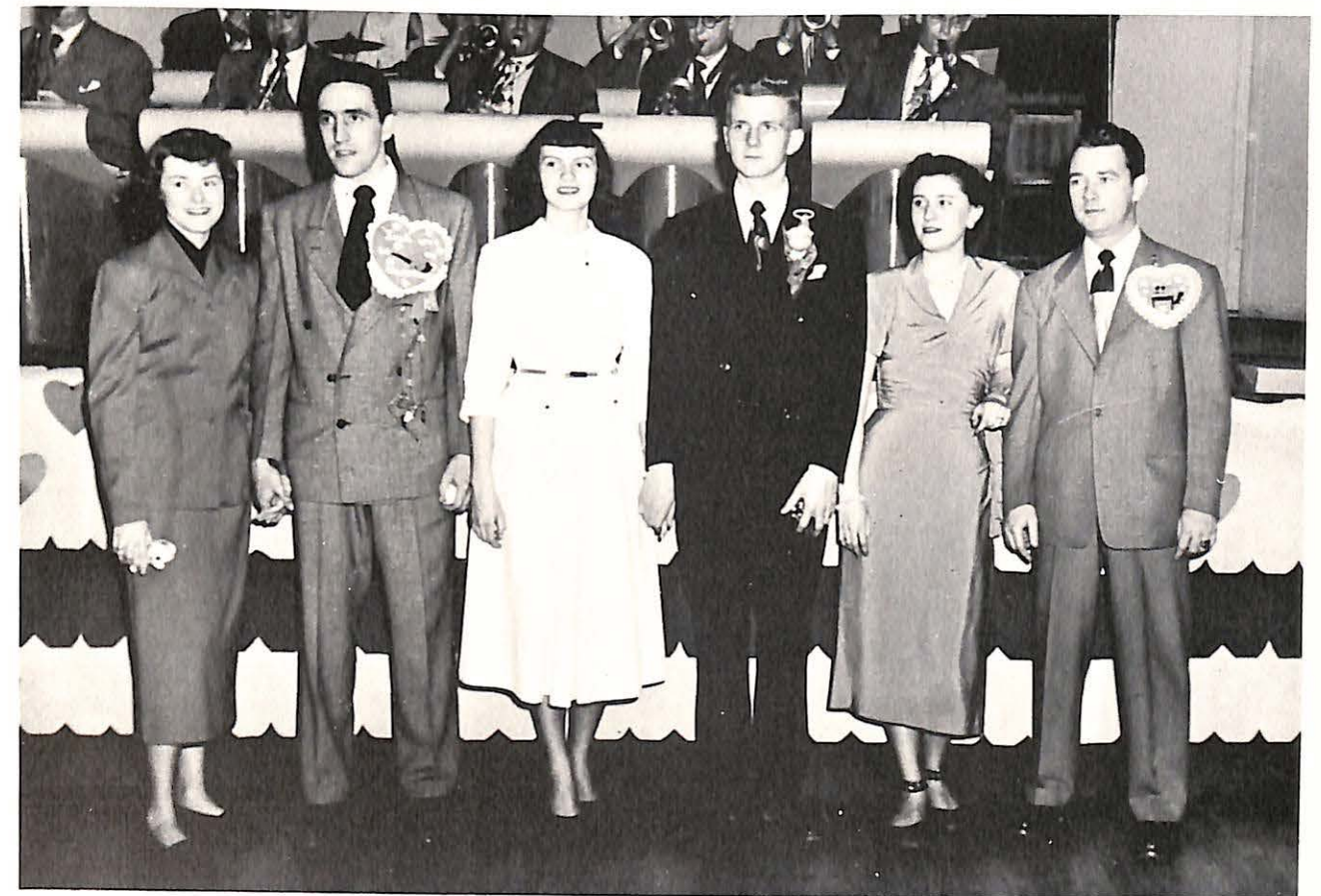
King Wright Reigning
Heartbeats Markland, Tipton, Carlson, Ferguson and court.



Watch this one!



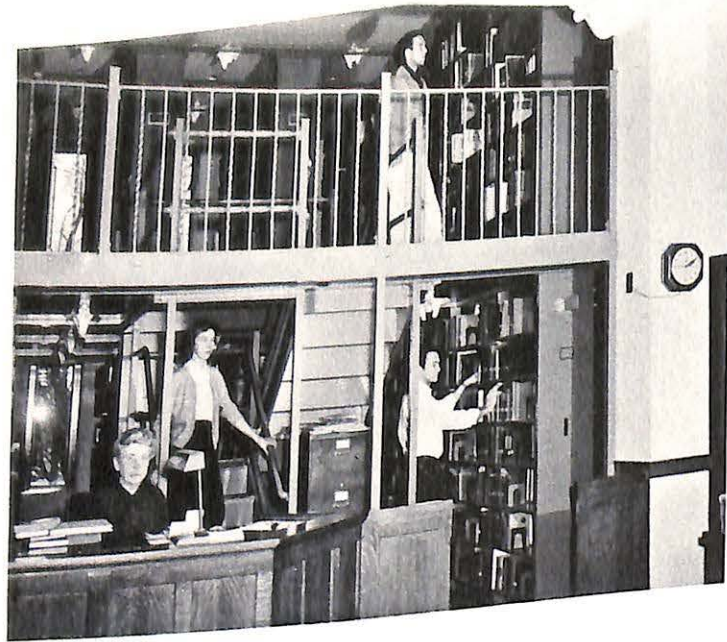
Real gone



Winning corsages - winning smiles

Murrell Library
Missouri Valley College
Marshall, Missouri

66 975



New Stacks

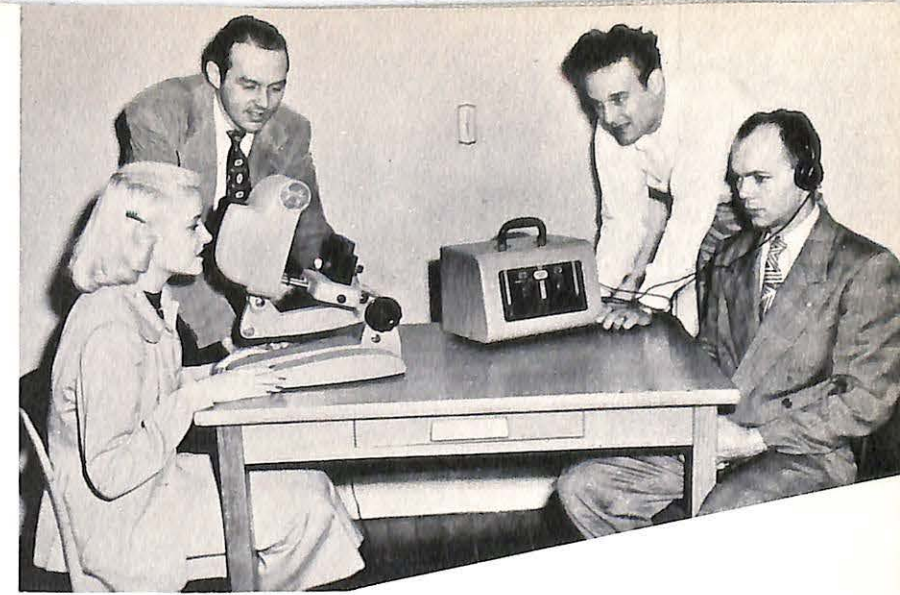


Current and choice



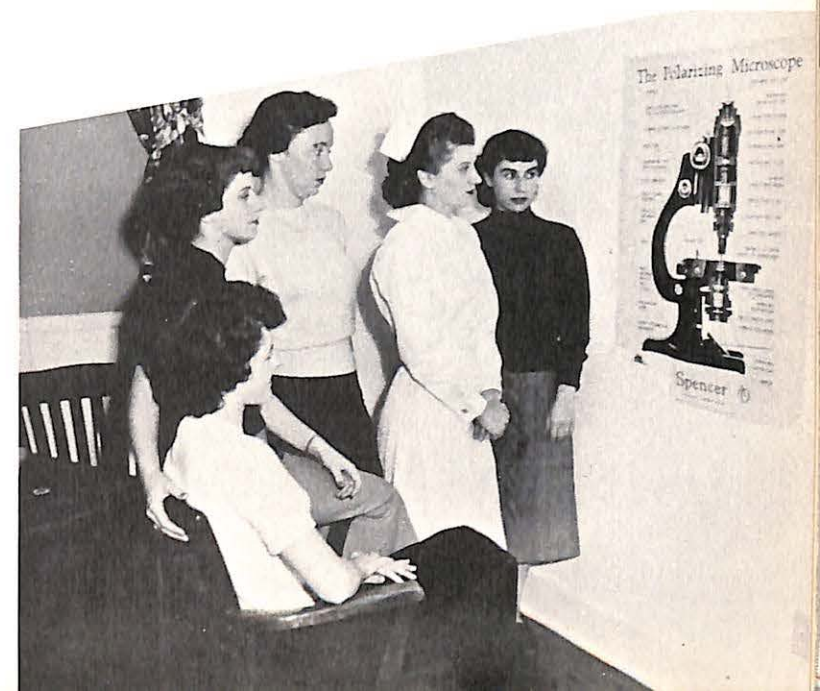
Remington Schuyler and students

Remedial reading and audiometer

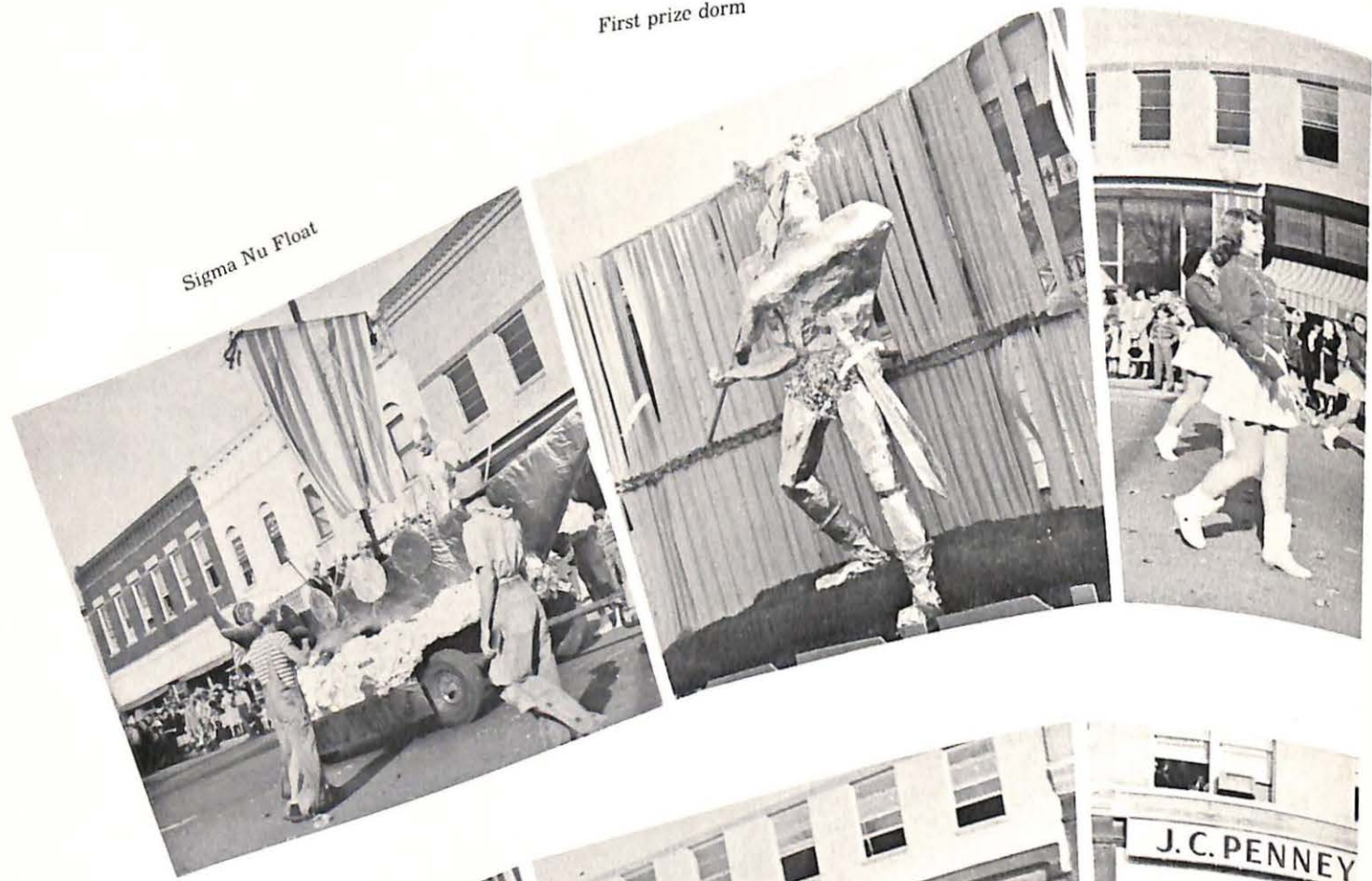


Chem lab

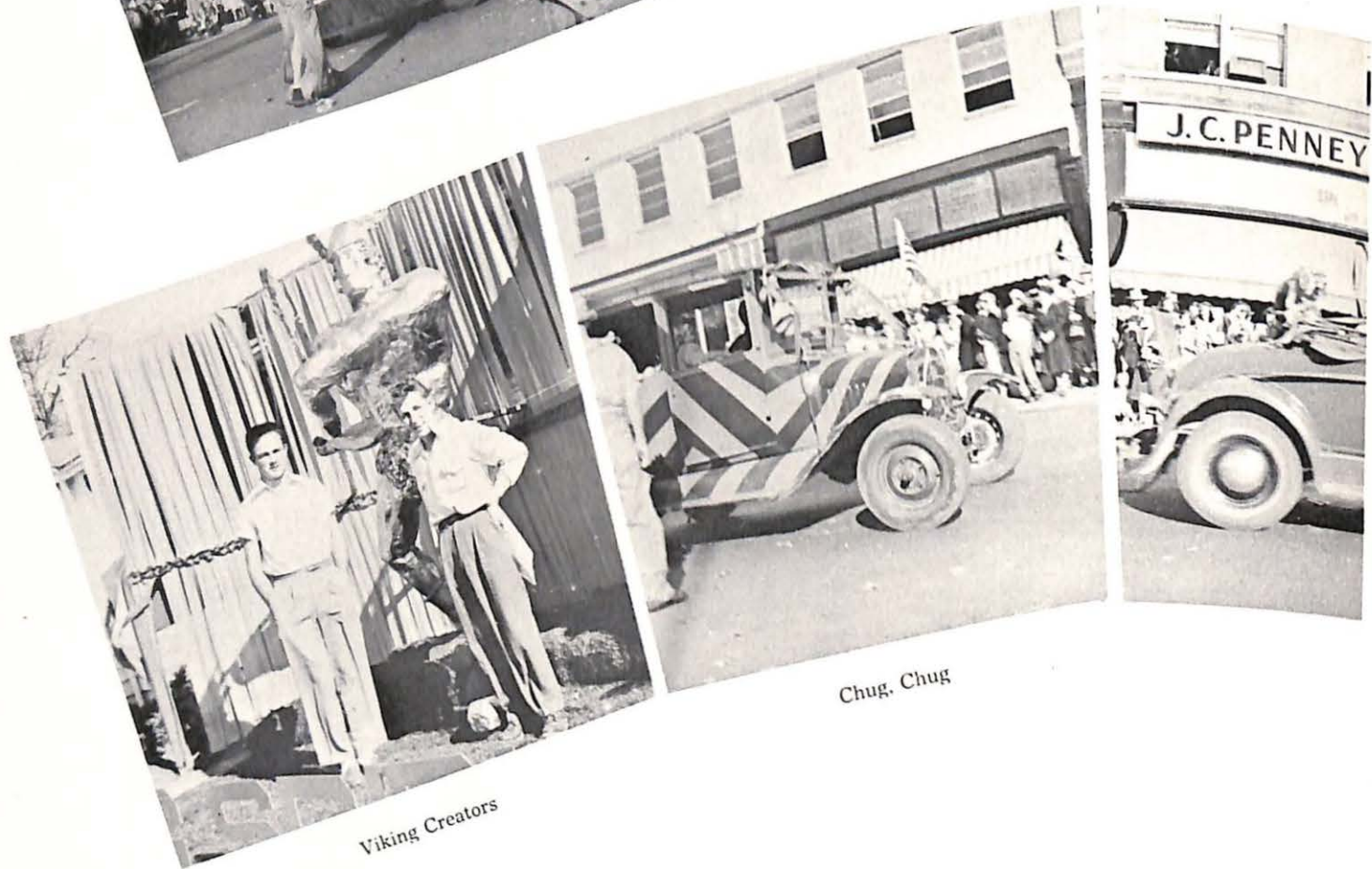
Health Center



First prize dorm



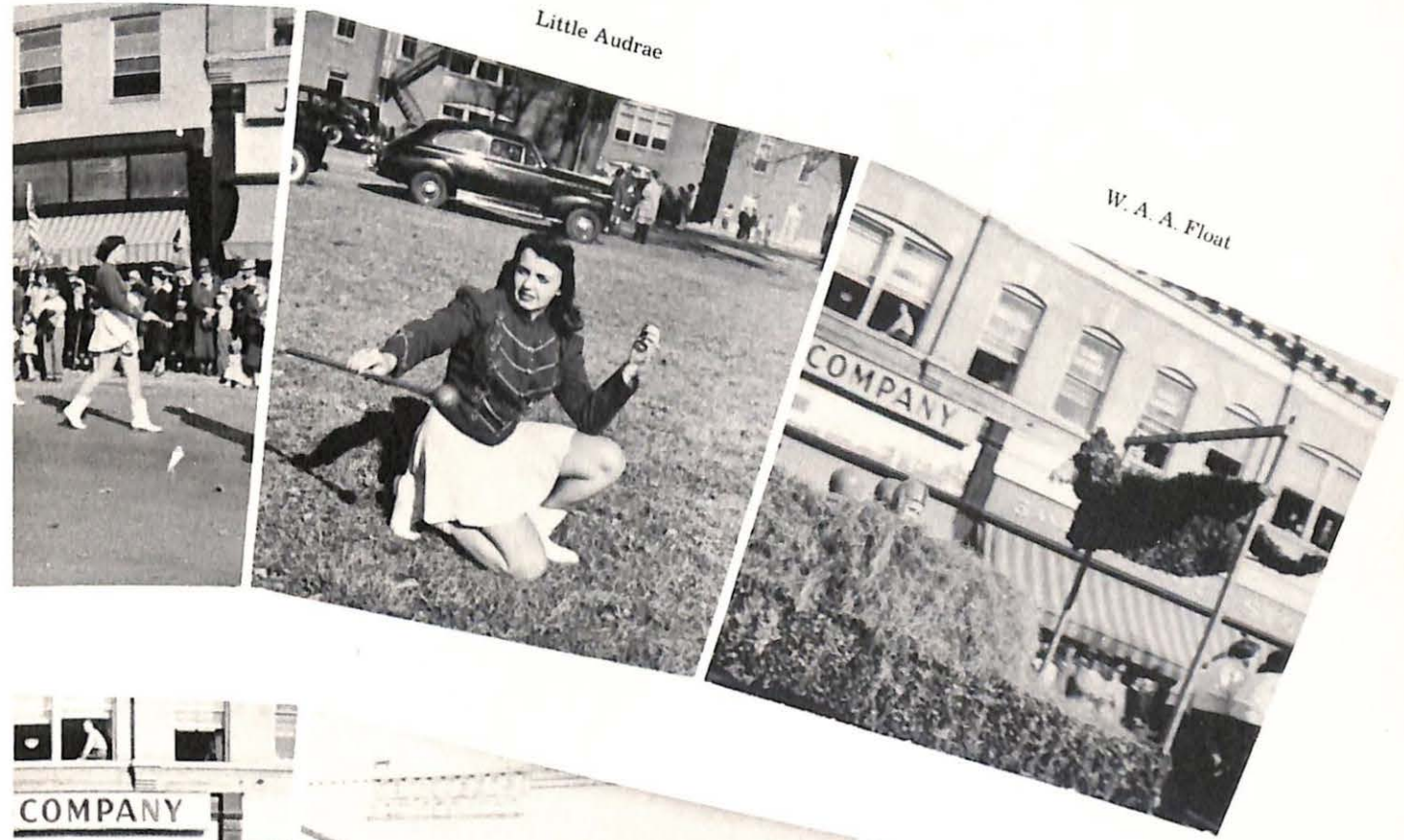
Sigma Nu Float



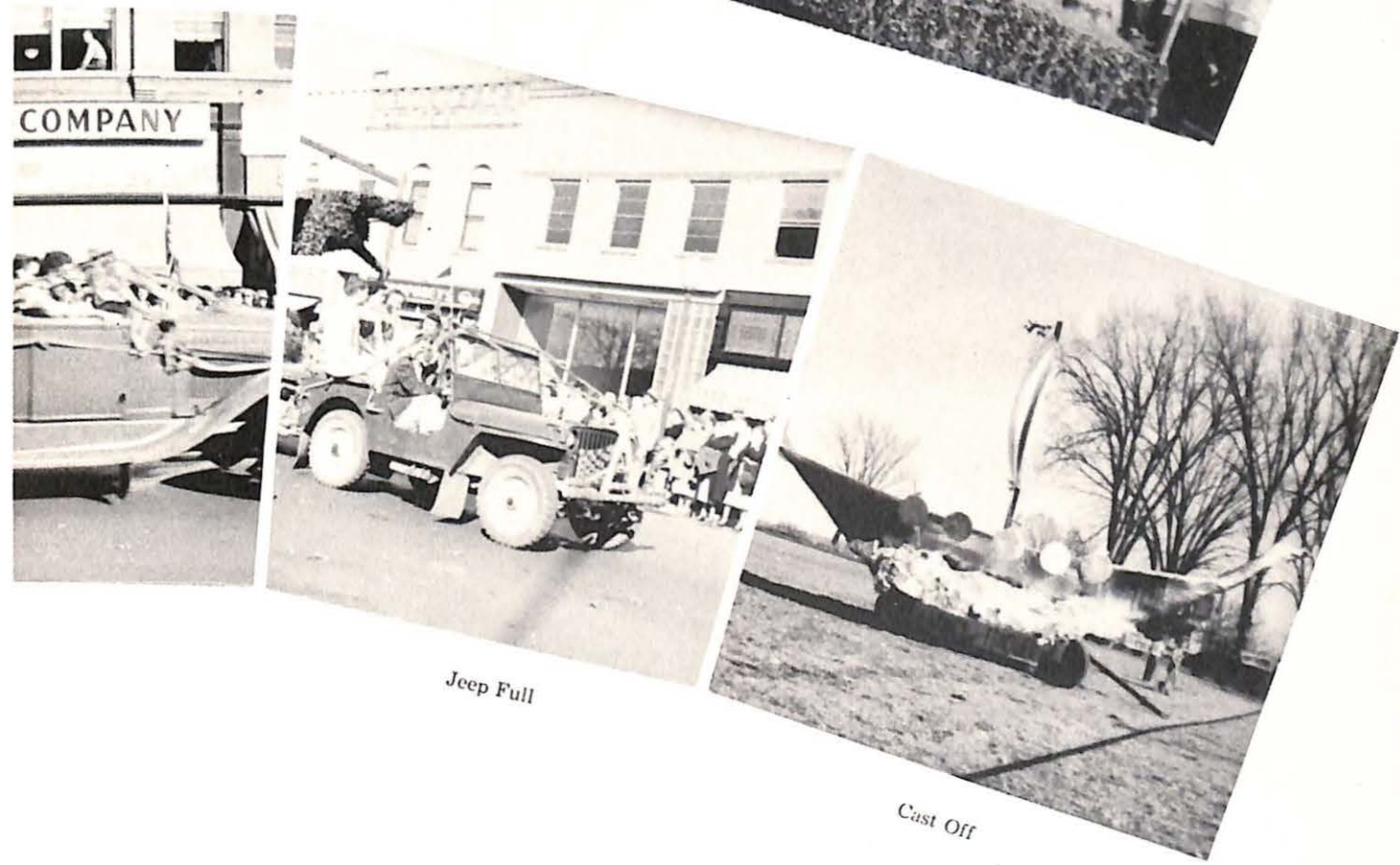
Chug, Chug

Viking Creators

Little Audrae



W. A. A. Float



Jeep Full

Cast Off



Dedication



Acceptance



"Now, down at Drury,"



Congratulations!



Mixed Emotions

"All join hands"



We're from Chicago





Davidsbundler float



Winning Columns - Alpha Sigma Phi



V-Club Float



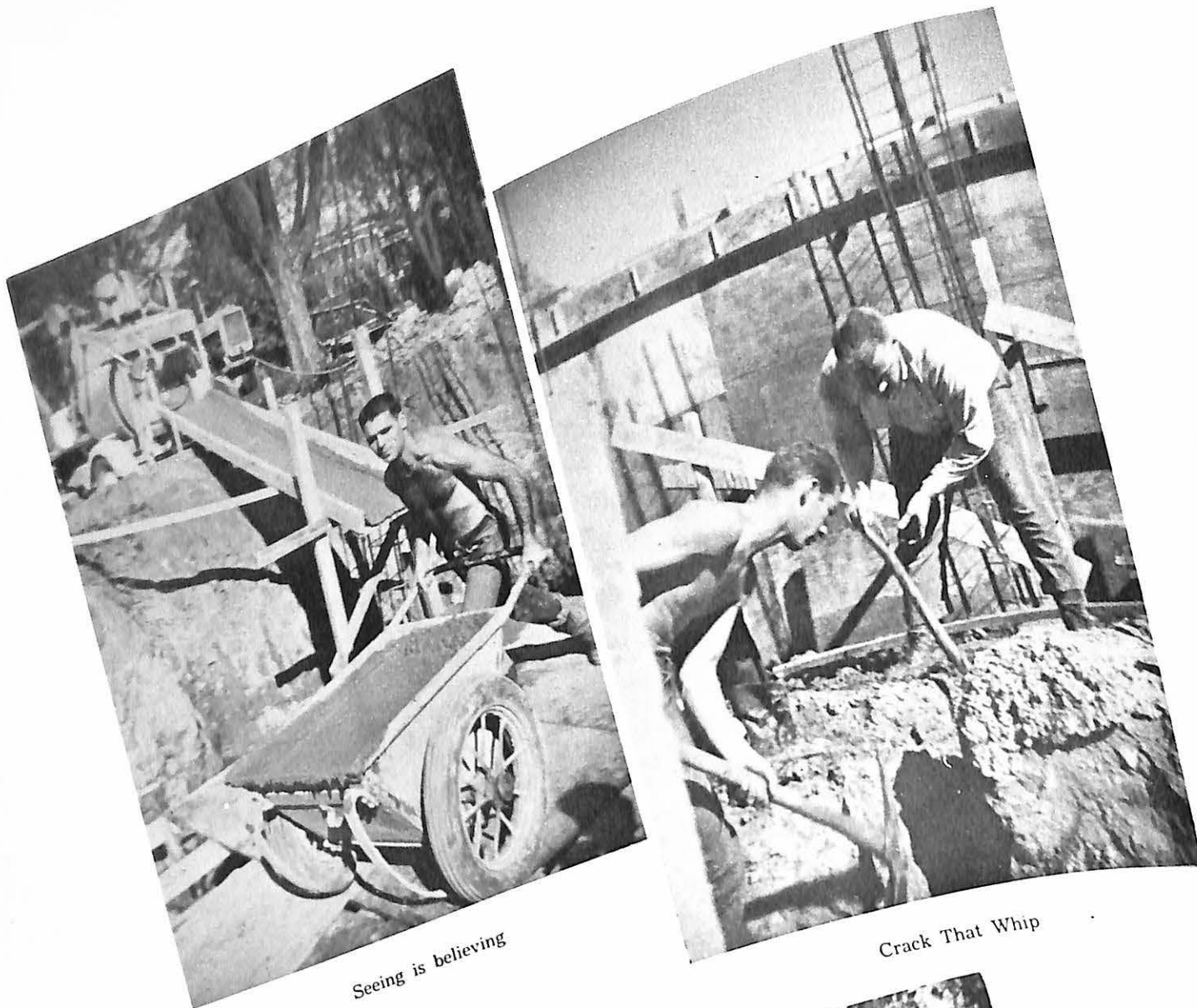
Leisure Time



Roughnecks



Winning Float - A. P. O.



Seeing is believing

Crack That Whip



Maid's Day Off



VALLEY
FORGE

Unit One, Apartment B



Left to right: Bob Ballew and daughter Robbie, Tom Cannon, Shorty Preston, Bonnie Preston, Mrs. Erskin Hope and son Teddy, Mrs. Bob Ballew.



Tom and Nan Cannon



Shorty and Bonnie Preston

Unit Two, Apartment D



Left to right: Luke Scavuzzo, Mary Alice Fields, Larry Fields and son, Jim, Cissie Scavuzzo, Toni Ann Giger, Mickey Giger, Francis Giger.
Absent: Mr. and Mrs. Krueger.



Winter Scene

Unit Three, Apartment D



Left to right: Barbara Reid and Wm. Tracy Allen, Bill Reid, Linda Fowler, Mrs. Fowler, Joe Fowler, Betty Allen and Dingbat, Bill Allen.



Aw, c'mon Pop!



Winter at Valley Forge.

Unit Four, Apartment A



Left to right: Mrs. Marvin Newton, Marvin Newton, Robert Krumsiek, Mrs. Robert Krumsiek, Mrs. Evelyn Anderson, Lefty Anderson, Mrs. Thompson.
On floor: Martha Sue Thompson, Viki Newton, Scotty Thompson and son Nelson.



Play Time



Don't throw it Nelson!

Unit Five, Apartment D



Left to right: Mrs. Myra Jane Wycoff, Mrs. Warton, Jim Warton, Mrs. John Anderson, Jim Amos,
Bud Wycoff, Mrs. Ellie Amos.
Dogs: Pinkey and George



Ling playing with his friends.

Unit Six, Apartment D



Left to right: Bill Lingenfelder and daughter Carol Jo, Mrs. Don Thomas, Don Thomas and
daughter Barbara, Rick Scheele, Mrs. Rick Scheele and son Pat, Mrs. Pat McDade, Leo
McDade, Mrs. Barbara Lingenfelder and son Billy, Jr.



Monday Morning Blues

Unit Seven, Apartment D



Mrs. Bert Hall and daughter Jackie, Mrs. Cliff Teagarden, Mrs. James Earp, Bert Hall, James Earp, Cliff Teagarden.

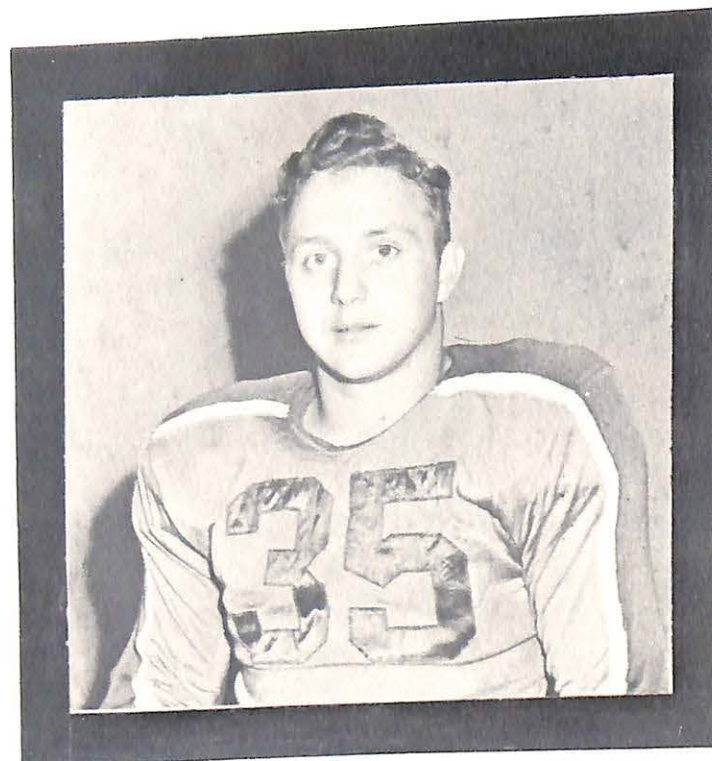


South



North





RALPH LEE JETT

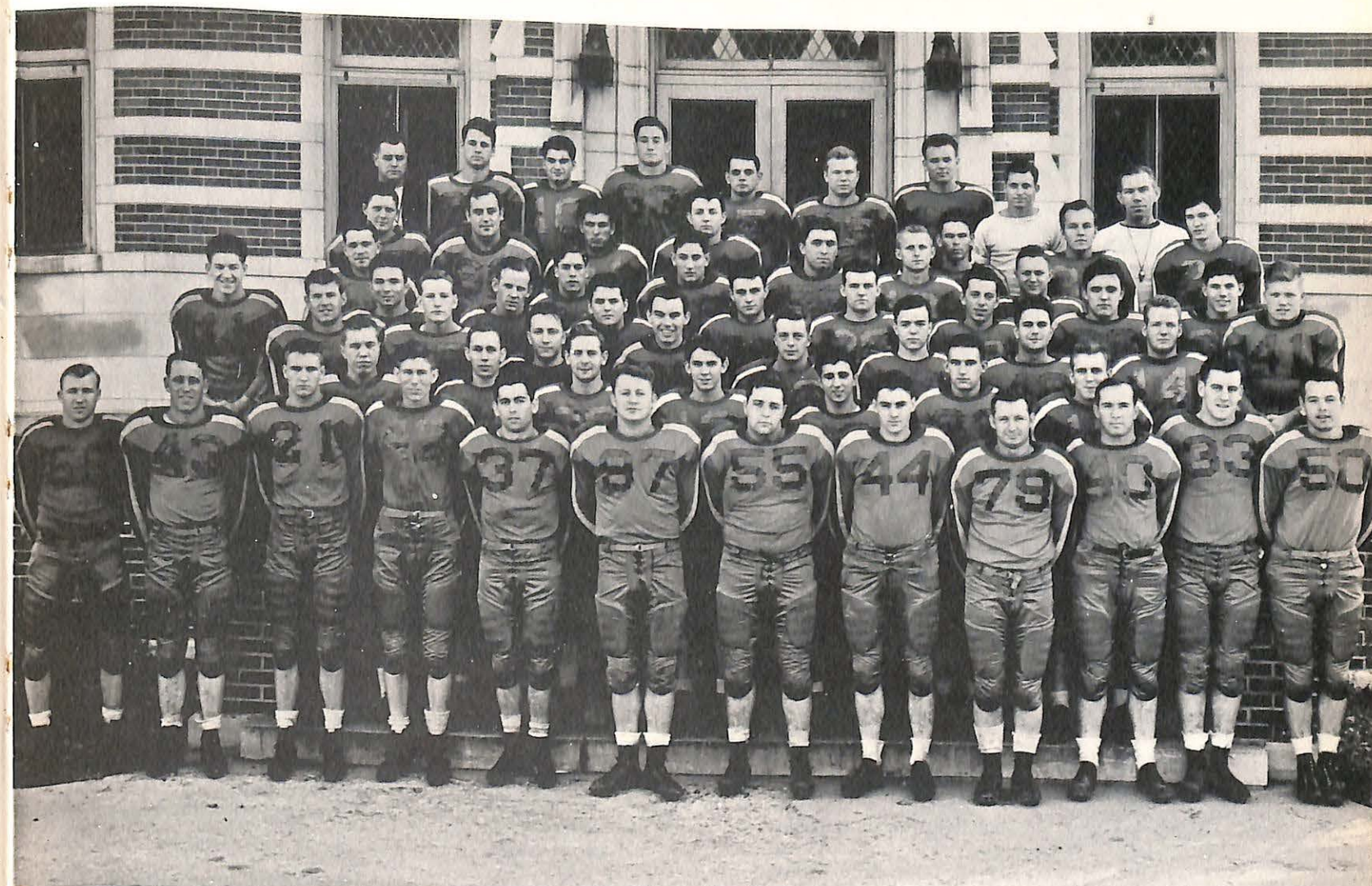
What is the ultimate in young manhood? Scholarship, courage, politeness, ambition--this listing is hardly complete but how many young men can measure high on these standards?

In one semester "Jett" made the Dean's List; lettered in football as a guard and center; was known to all his buddies as a "right guy" who always had a smile frozen on his face; did manual labor to help put himself through school.

He played high school football for Carl Stollard, a former Valley athlete. Early last fall Stollard said, "I don't know whether or not Ralph is ready to play college football. But this I do know: Valley is getting a student and gentleman that will do nothing to discredit the school or his family." How prophetic his words were.

A young Viking who measured up in every category has passed on. His contribution, though brief, to the great Viking tradition will not be forgotten.

We therefore humbly dedicate the sports section of this, the 1950 Sabiduria, to Ralph Jett, a great Viking.



First row left to right: Preston, Baker, Fields, Robbins, McKinney, Skinner, Lingenfelder, Howell, Speise, Stewart, Hunt.
 Second row left to right: Hendrix, K. Carrol, Arnall, Simmons, Scavuzzo, Morrison, Mallory.
 Third row left to right: Bedell, Orscheln, Phillips, Young, Skelton, Moore, Landis, Brooks, Branham, Spriggs.
 Fourth row left to right: Cliffe, Berlin, Hayden, Markland, Ballew, Davis, Steele, Happy.
 Fifth row left to right: Luschen, A. Carrol, Hanna, Schweigerdt, D. Nelson, Jett.
 Sixth row left to right: H. Nelson, Gann, Viera, Elmer, Soxman, Fowler, Payton.
 Seventh row left to right: Coach Ashford, Webb, Pezzano, Wright, Simms, Wensel, Carrodi, Semar, Coach Skelton.



COACH ASHFORD

SEASON RESULTS: WON 8 LOST 3

Missouri Valley	28	Bethany	6
Missouri Valley	27	Kirkville	7
Missouri Valley	20	Ottawa U.	6
Missouri Valley	7	Evansville	17
Missouri Valley	20	Central	6
Missouri Valley	15	Warrensburg	0
Missouri Valley	65	Culver-Stockton	6
Missouri Valley	62	William-Jewell	0
Missouri Valley	6	Arkansas State	7
Missouri Valley	62	College of Emporia	0
Oleander Bowl			
Missouri Valley	13	McMurry College	19



Starting lineup of the Vikings:
 Backfield: Wright, Preston, Lingenfelder, Stewart.
 Line: Orscheln, Skinner, Baker, Nelson, Holwell, McKinney, Hunt.

The Missouri Valley Vikings took the MCAU Championship for the sixth year during the 1949 season of play. Again they proved to their loyal fans that they were one of the strongest small college teams in the nation. Their record is indicative of the fine record that has been maintained in the past.

The mighty Vikings traveled to Galveston to compete in the Oleander Bowl. This was the fifth bowl in three years for the Marshall men, which is a record in itself. In these five contests, their record has been two wins, two losses, and one tie. McMurry College of Abeline, Texas downed Valley 19-13 this year after the Vikings had beaten the Indians two successive years by identical scores of 20-13.

A total of ten games we played this year and one bowl game. This season opened on September 16 against the Bethany Swedes. The game was played on Gregg-Mitchell Field and the MVC team came out on the long end of a 28-6 score.

After a successful start, the team traveled to Kirksville to meet the teachers on their home field. The strength of the team was beginning to show as they chalked up their second win of the 1949 season on September 23 - 27-7.

Blues Stadium was the site of the next contest for Valley. They faced the Ottawa Braves and the men from Kansas were on the war-path that night. It was a rough, tough battle and the Vikings didn't pull away until late in the game. It was almost the same kind of a battle that occurred the year before on the same field. In the third quarter the superior power of Coach Ashford's men came into being and the Braves wilted under the attack. September 29 was the date of the contest and Valley put another mark in the win column by a 20-6 score. It might be well to note that at the half the score was tied 6-6.

Then came Evansville!!! Yes, Evansville came,

and with them they brought trouble for the Viking team. No one seems to know just what the reason was for the defeat in this game, but all agreed that they had seen a great team go down to defeat as well as a great team the victor. The Vikes went down to the score of 17-7.

The next week, on October 14, the Vikings traveled to Fayette to play the Eagles of Central. The whole town and college moved down to Fayette that night to see the men of Central bow to the drive and hustle of the team. Central had little chance of winning and knew it about five minutes after the beginning whistle. The Vikings had little trouble in trouncing Central under the lights 20-6.

Warrensburg was the next victim on the Valley schedule. They put up a good battle, but the outstanding power of the Marshall team proved to be too much for the Mules and Valley pulled away to win by a 15-0 score. At times it seemed that there was more action in the stands than on the field, but John Law came to the rescue and serenity was restored in short order.

The Wildcats from Culver-Stockton came to Marshall with high hopes, but they left with all of the wild taken out of the cats. After they heard the final whistle the Wildcats were on the short end of the 65-6 score. The Viking strength again lived up to all expectations as they walked away with the game. This was the first chance for the reserves to do their stuff, but it was by no means their last appearance of the year. Everyone but the water boy suited up for the game.

Homecoming game was an afternoon contest played under a bright and cloudless sky. The Vikings went on the rampage again on the Armistice Day game by trouncing "Billy" Jewell by the score of 62-0. Again the reserves went through their paces and by all indications, Valley will have a team to be justly proud of in the years to come.



Lefty on an end around.



"Big John" on the move.

On November 18 we ran into Arkansas State -- a day that will long be remembered in the team's mind. They traveled to Jonesboro and met the up and down team of Arkansas State. We lost by a 7-6 score but there are many who feel that the score was no indication that the better team came out on the winning end of the game. The ability of the respective teams could not be measured by this slim one point margin and it is the general opinion that the Vikings could take Arkansas State six days out of the week and we hit them on the seventh day. There are none who could not be proud of the team that night and their performance was creditable to any team.

Rounding out the regular schedule for the Vikings was the game with College of Emporia at Marshall on November 24, an afternoon Thanksgiving Day game. After the Emporia squad had a taste of the starting line-up, the reserves took over and finished the job to the tune of 62-0. Again the reserves did an admirable job as the score indicated.

Altogether, the not to be denied Vikings amassed a total of 325 points against opponents while they yielded a total of 74 points which included the Oleander Bowl. That averages out to 55.556 points per game for the Vikings which is good playing in any man's league, while their opponents had an average of 6.727 points per game.



A job well done.



Easy Jim adds another.



"Buckshot" lives up to his name.



Ling and Govie doctoring up.



Backfield: Lingenfelder, Preston, Wright.
 Linemen: Skinner, Baker, McKinney, Hunt.

Past M. C. A. U. All-Conference records of the above men.

- Lingenfelder: First team for three years, second team for one year.
- Preston: First team for two years.
- Wright: First team for one year, second team for one year.
- Skinner: First team for three years, second team for one year.
- Baker: First team for one year.
- McKinney: First team for two years, second team for two years.
- Hunt: First team for one year.

In the football seasons of 1941, '42, '46, '47, '48 and '49 there were a possible sixty-six first place team positions available to the conference teams. Of these the Missouri Valley Vikings captured forty-one for a first place percentage of 62%. This is a terrific

percentage for any college to accrue. This might be a result of the fact that the Vikings have won the conference championship in five of these six years. Domination of league play has to show up in All-Conference selections to balance out.

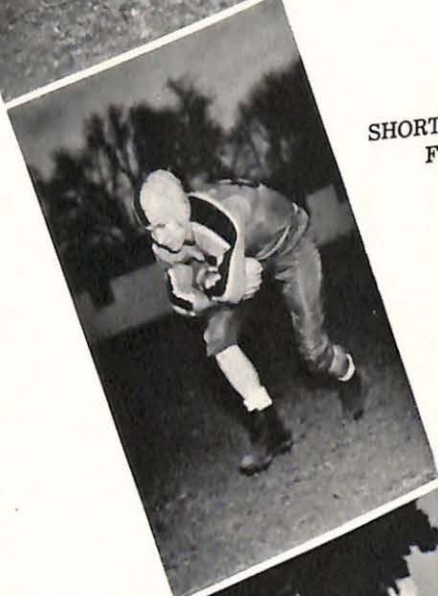


HERBERT E. McKINNEY
 1949 First Team Little All-American Tackle.
 Four year football letterman of Missouri Valley College.

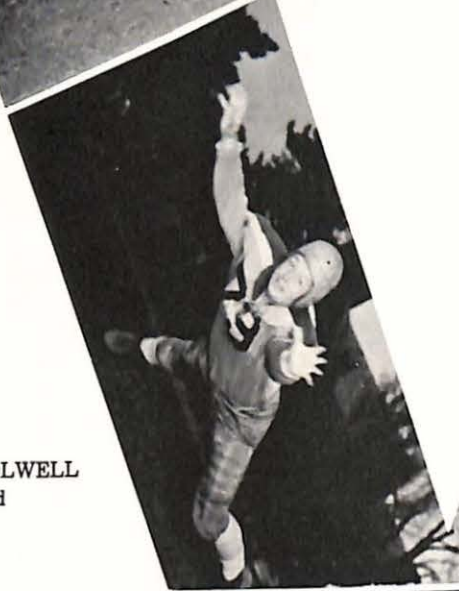
The record of the Missouri Valley Vikings for placing men on the Little All-American "11" in the past four years has been very impressive. In 1946 the Vikings placed Ted Chitwood on the second team at an end position. In 1947 Valley's banner year in this department they placed Jim Nelson on the first team at the guard position. Two other Vikings, Alva Baker, backfield, and J. D. Copple, tackle, received honorable mention on the Little All-American team. In 1948 Jim Nelson repeated again on the first team at guard. This year Missouri Valley is represented by Herbert McKinney on the first team in the tackle slot. Another honor gained by the Vikings in 1947 was Hugh Dunn's winning of the Williamson Trophy as the Most Valuable Player on Small College Teams. All this national recognition is indicative of the caliber of the Viking teams of the past four years.



HERB McKINNEY
Tackle



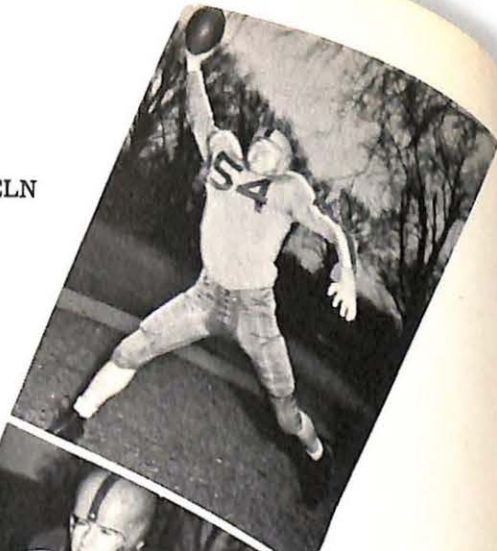
SHORTY PRESTON
Fullback



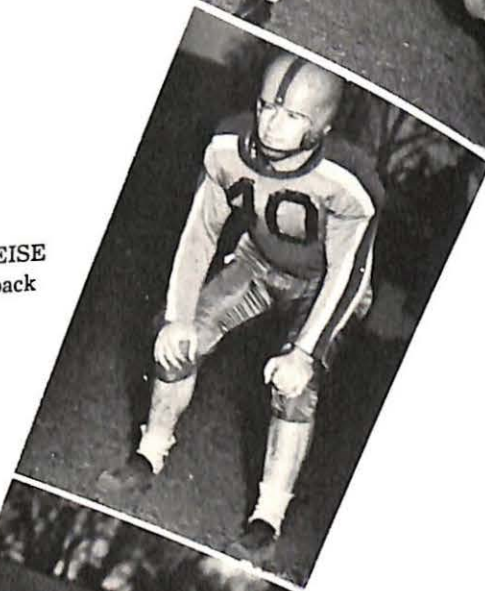
SPEEDY HOLWELL
Guard



FRED SKINNER
Co-Capt. - Tackle



JERRY ORSCHELN
End



BIFF SPEISE
Quarterback



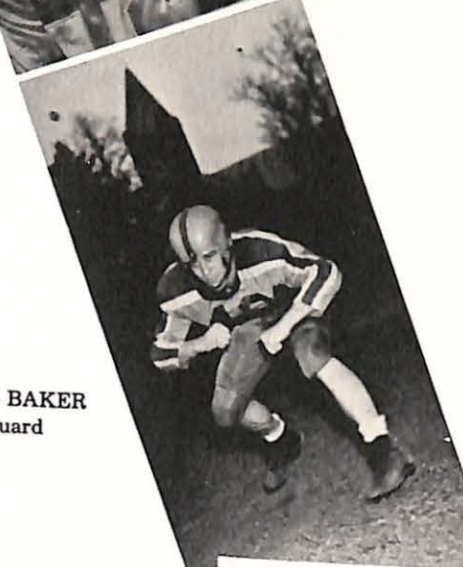
CHUCK ROBBINS
Tackle



JOHN STEWART
Quarterback



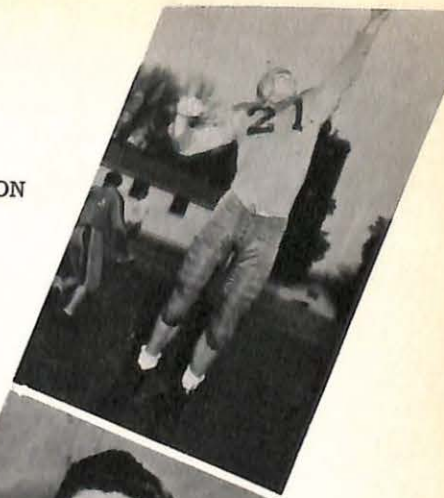
LARRY FIELDS
End



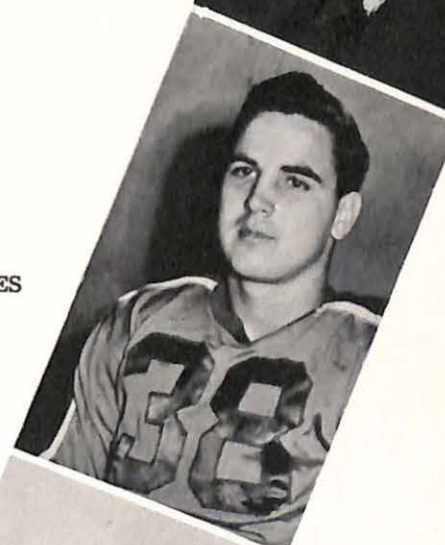
EARL BAKER
Guard



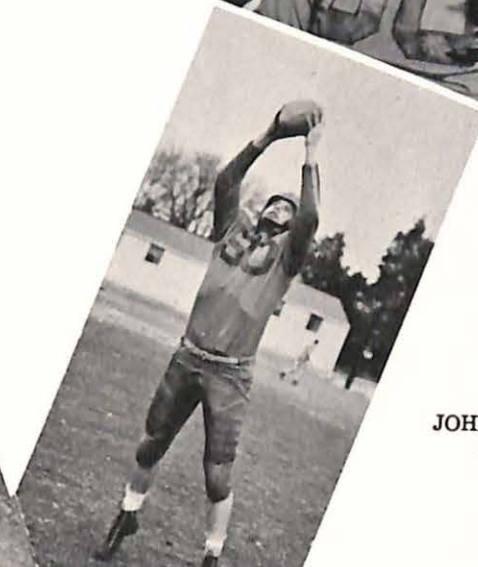
BILL LINGENFELDER
Co-Capt. - Halfback



LEFTY ANDERSON
End



HARRY HAYES
Quarterback



JOHN HUNT
End



Tim Wright and
Homer Nelson
1950
Co-Capts.



"Pop" Ferguson and Darby Alison
Members of Valley's first football team.



Getting ready for
The Oleander Bowl
even tho'



First row left to right: Mitchell, Giger, Anderson, Rogers, Hendrix, Dorrel.
Second row left to right: Beissenherz, Gilmore, Fowler, Siegel, Skelton, Hanna, Brown.
Third row left to right: Saupe, Grimes, Coach Skelton, Nelson, Markland.



COACH SKELTON

This year the Viking basketballers were directed by Coach Dale Skelton, new addition to the coaching staff at Missouri Valley. Coach Skelton brought a very impressive past record to the campus, which included a state championship team while at Chanute, Kansas, and while at Kemper Military Academy he took top state honors once, second, three times, and third, three times.

Under Coach Skelton's direction the Vikings compiled a 16 won, 11 lost record. Defending champions of the M. C. A. U. in basketball from the previous year the Vikings this year ended up in a three way tie for third place in the conference along with Westminster and Drury.



Starting Lineup: Dorrell, Hendrix, Rogers, Anderson, Mitchell.

This year the basketball squad went on a 1700 mile trip during Christmas vacation, and played games in Oklahoma, Texas, and caught two South Missouri teams on the way back. This was the longest extended trip of a Valley basketball team to date.

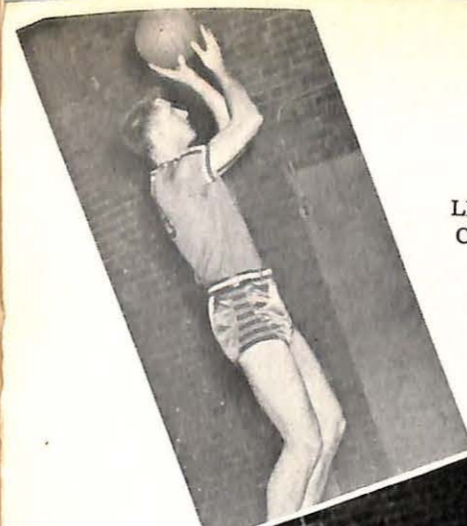
The season was highlighted by the tying of the school scoring record by "Joint" Hendrix who dunked 34 points through the hoop in one game. This tied Joint with Lefty Anderson, who had established the record only last year. During the season Hendrix also broke the school scoring record held by Bill Kliene, when he poured 423 points into the nets, breaking Kliene's record by thirty points. Co-Capt. Lefty Anderson added another feather to the Skeltonmen's cap when he won the distinction of being the high point man of the league games.

This was a strange season as two of the regular starters, Dorrell and Rogers, were graduated in February, and the team had to be reshaped in mid-season. The record the team achieved this year doesn't indicate the potentialities they possessed as they had more off nights than any one team should merit.



Two ways to make a lefthanded layup;

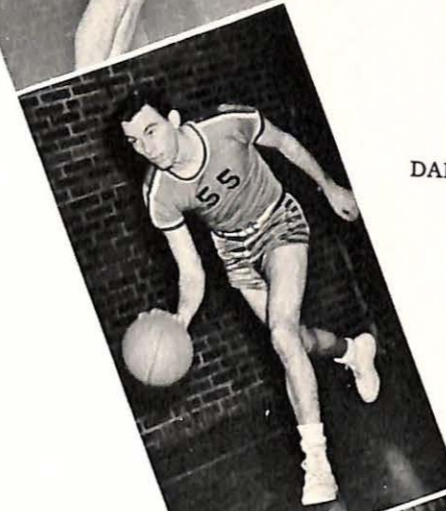
A la Dorrell and a la Hendrix.



LEFTY ANDERSON
Co-Capt. - Forward



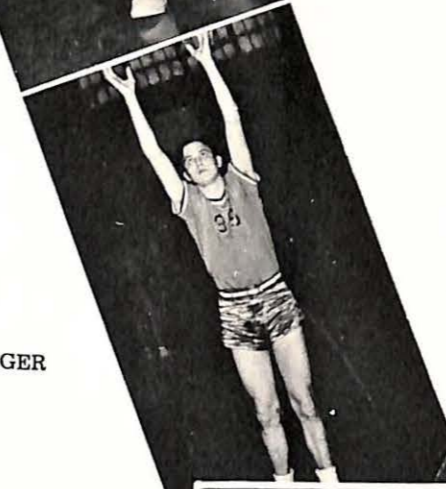
RALPH DORRELL
Co-Capt. - Guard



DALE SKELTON
Guard



JOE SAUPE
Forward



FRANCIS GIGER
Center



SQUIRREL ROGERS
Center



LE ROY MITCHELL
Guard

Season Results: Won 16 Lost 11

	Vikings	Opponents
	55	51
	38	47
Powell Sports Shop	55	58
Baker University	61	49
Rockhurst	35	49
K Lunch	55	40
Oklahoma City University	59	50
McMurry College	56	69
Abilene Christian	65	58
Springfield State	63	52
Warrensburg	64	49
Powell Sports Shop	83	56
College of Emporia	48	44
Tarkio	59	79
Westminster	54	57
Culver-Stockton	58	70
Drury	58	56
Central	53	69
Warrensburg	51	56
Westminster	55	52
William-Jewell	46	50
Ottawa	63	42
Powell Sports Shop (overtime)	62	51
William-Jewell	54	73
Culver-Stockton	72	49
Central	69	50
Tarkio	71	55
College of Emporia		
Drury		



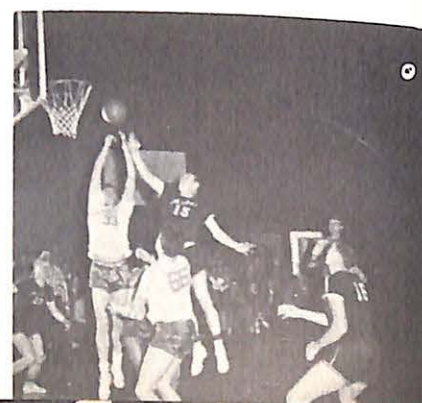
Back Row: Signore, Simmons, Lee, Nelson, Anderson, Elmer, Bartlett, Ballew, Coach Ashford
Kneeling: Wilhelm, Rose, Carroll, K., Herndon, Simms, Carroll, A., Moore, Arnall.



Joint goes high to hit



Tip it in



Taming the Mules



Valley's Co-Capt's for 1950. Larry Fields, left, and Lefty Anderson, right





Arnall up and over

Seeking their fourth straight M. C. A. U. track championship the thin-clad boys started the track season off with a dual indoor meet against Central on March 17 at Fayette. Then followed eight dual meets and the conference meet held on their home track. Some of the Vikings also journeyed to Lawrence, Kansas for the K. U. Relays, and Lefty Anderson competed in the Decathlon.

With Fields defending his title in the low and high hurdles, Anderson in the discus and broad jump, Nelson in the shot, and the 880 yard relay team with only Anderson and Fields back from last year's quartet, the Vikings had their work cut out for them this year in holding their own.

Some of the new additions to this year's squad who showed well this season were "Buckshot" Carroll in the dashes and low hurdles, Oliver Rose in the dashes, and Howard Lee in the middle



The discus gets a ride



Kick it Chick, kick it



Viking point getters



Get Set.



Hitting the home stretch.



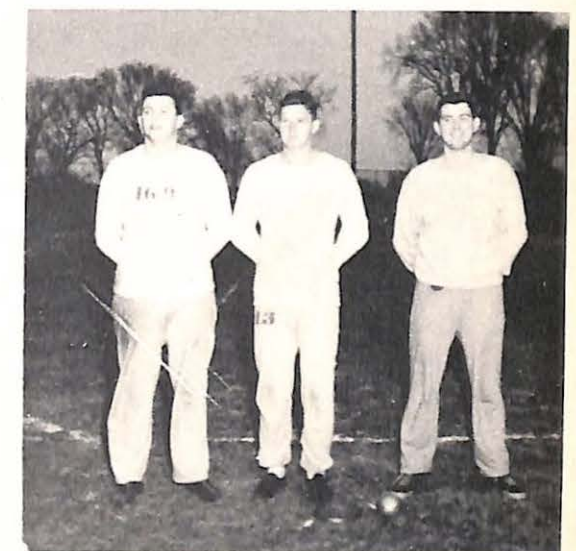
It looks so easy.



Young athletes.



Can I do it?



Valley's beef.



Saupe, Pearson, Coach Skelton, Elliott, Soxman

With three of the four man team veterans of last years' Viking tennis squad, and one of these eighth seeded in last years' conference play the Valley netmen had one of the best seasons in Viking tennis history.

The returning men were Paul Elliot, Joe Saupe, and Ken Soxman. Charlie Pearson rounded out the quartet. The tennis team played their matches identically with the golf team.

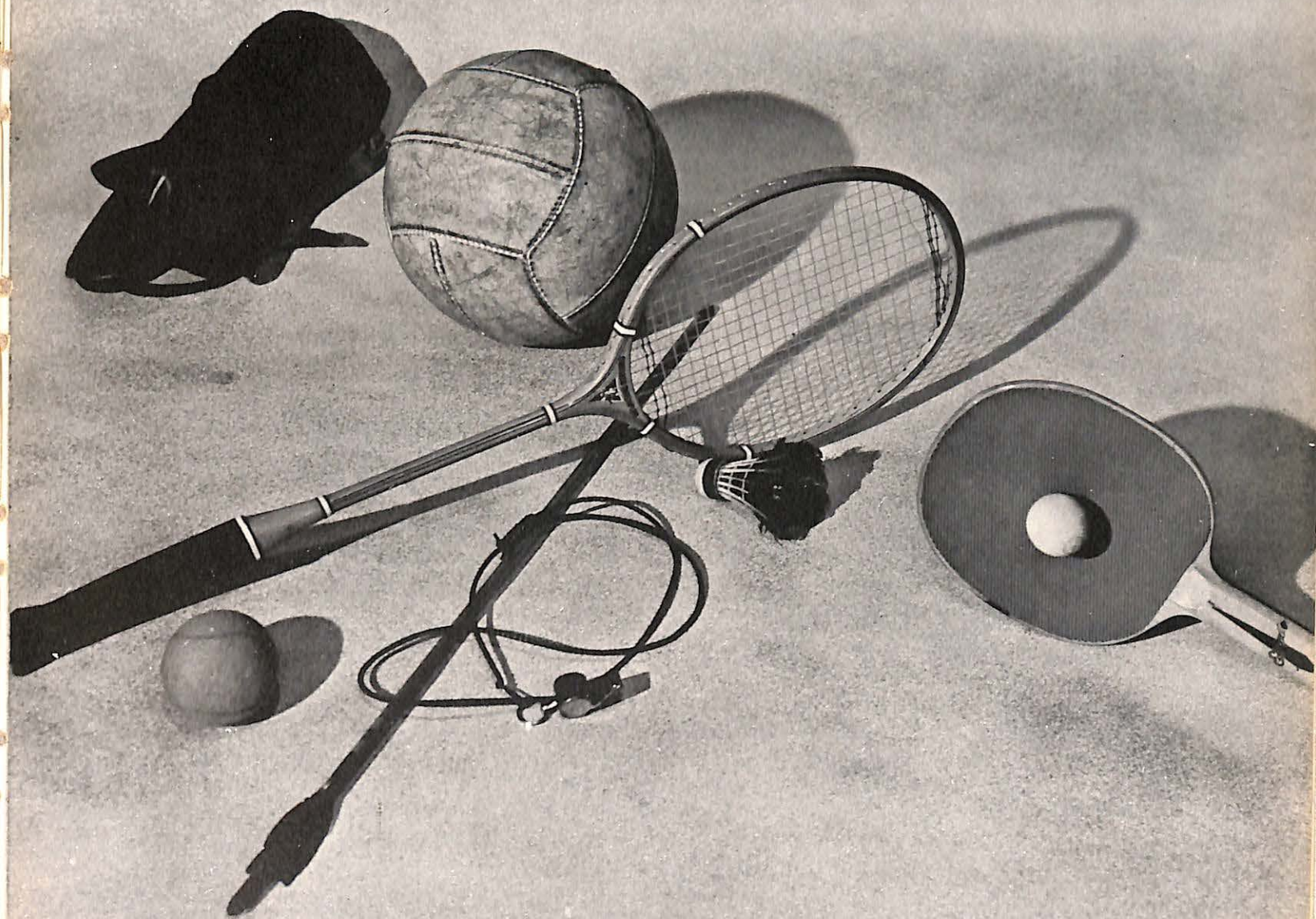


Hamilton, Fee, Nelson, Coach Skelton, Larson, Kelly

Under the guidance of Coach Skelton the golf team went through their paces out at Indian Foothills golf course. The men opened the season at Ottawa with a dual meet and in addition to Ottawa, the team traveled to William-Jewell, Warrensburg, and Westminster.

With only Larry Larson returning from last year's team, the remaining places on the team were filled by men new to conference play and rules.

All in all the team competed in seven dual meets, and the conference meet which was held on the home Indian Foothills course.



Women's Athletic Association



Seated left to right: Carrothers, Miss Pippin, Hough, Lamar, Phillips, Stroud, Muehlenbrock.
 Standing left to right: Jensen, Houston, Lacy, Summers, Clements, Matheny, Davies, Wyrick,
 Montag, Shumate, Darnell, Dupy, Morgan.

The Women's Athletic Association is composed of women students from Young Hall and town who are interested in sports, as well as in promoting social events around the campus. The faculty sponsor for the group is Miss Nancy Lu Pippin, head of the women's athletic department at Valley, and the president of the group is Martha Lamar.

In the sports department intramural basketball, volleyball, field hockey, and tennis games were scheduled and run off under the supervision of the intramural chairman for each sport. Points are given to the girls for their participation on the various games

and for serving on committees. At the end of the year the girl with the highest point total is awarded a trophy. A prize is also awarded to the girl contributing the most to women's athletics.

An old-fashioned box lunch and square dance was sponsored by the group in Morrison gymnasium in the latter part of February. Other activities during the year have been a picnic for the W. A. A. members and their dates in the park in early spring, as well as swimming parties before the close of school.

OFFICERS

- | | |
|---------------------|----------------------|
| President | Martha Lamar |
| Vice-President | Lois Hough |
| Secretary-Treasurer | Jeannie Phillips |
| Sponsor | Miss Nancy Lu Pippin |

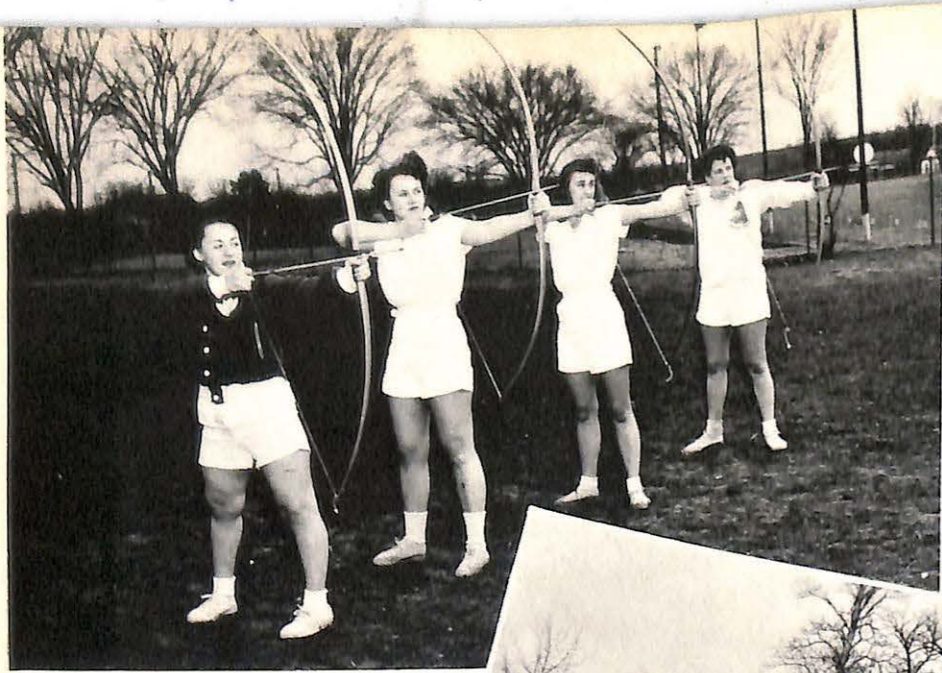


Now Girls.

We've Progressed!



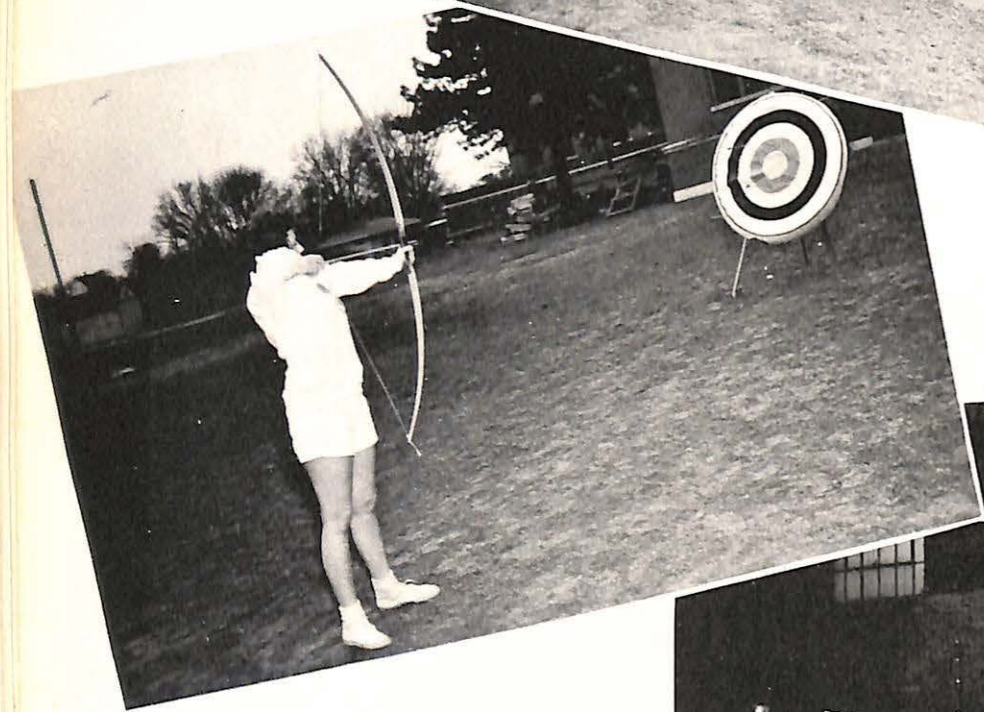
Jump ball.



Ready, Aim, Fire!



A love match?



Bullseye.



Hit that birdie.

Varsity Basketball Team



Kneeling left to right: Carrothers, Young, Bredberg, Wyrick.
 Standing left to right: Miss Pippin, Kilp, Arnold, Matheny, Summers, Houston, Hickman, Muehlenbrock.

Intramural Volleyball Winners.

Standing left to right:
 Arnold, Boeschen, Zavrel, Aronson.
 Kneeling left to right:
 Jensen, Thornton, Stroud, Muehlenbrock.





All eyes on the ball.



Stri-ke two!



Watch that form.



Get that rebound!



Miss Pippin and assistant.



Let's have a bully.

Cheerleader Squad



Kneeling left to right: Kilp, Davies, Lacy, Arnold.
 Standing left to right: Roscher, Stade, Ogdon, Carstenson.



Sabiduria Staff



Standing left to right: Gordon Smith, faculty advisor; Scotty Hamilton, Sports co-editor; Harold Gilkey staff photographer, Herb McKinney, co-editor; Jim Herbon, sports co-editor.
 Seated left to right: Bill Allen, co-editor; Lois Hough, women's sports editor; Audrae Bredberg, stenographer.

With this edition of the Sabiduria we have attempted to do the following things: produce a yearbook drastically different from those of the past, yet representative of the Viking spirit here at Valley; edit a yearbook that could be forwarded to the publisher for printing and then returned to the student before the termination of the school year; make this yearbook one you can be justifiably proud of. To do this we have had to sacrifice intramurals and not give complete coverage of spring sports and other spring activities.

We feel in our own minds that we have produced a book that will measure up to your expectations. We are indebted to an unselfish staff that has contributed endless hours of labor and research in order to provide you with this Sabiduria. We sincerely hope that in years to come this yearbook will provide for you an unending remembrance and treasure of your days at Valley.

*Herb McKinney
 Bill Allen*

Index
Administration, Faculty and Staff

A		M	
Ashford, Volney	11, 82, 94, 121, 131	McAninch, Mrs. Margaret	13
B		McClure, Ivy	Not Pictured
Bacon, Mrs. Mae	Not Pictured	Moose, Mrs. Frances	13
Banta, B. B.	10, 81, 88, 95	Mounts, Ben F.	17
Banty, Ollie	17	O	
Barrow, Miss Nola	17	Overall, Nadine W.	13
Bartle, H. Roe	4, 6, 94, 95, 104	P	
Bishop, Myrtilla	16	Parsons, E. L.	4, 9, 95
Borgman, Miss Ruby	17	Patton, E. F.	17
Bueker, A. H.	Not Pictured	Pearson, Luetta	16
Bullington, Gloria	16	Pepper, Henry	13
C		Pinkston, Dow G.	13
Campbell, Mrs. Cleo	15	Pippin, Miss Nancy Lu	13, 138, 140, 141, 142, 143
Campuzano, Mrs. Elizabeth	11, 75	Powell, Evelyn	13, 76
Cook, Mrs. Raymond	11, 101	Q	
D		Quisenberry, E. S.	17
Dauten, Paul M.	11	Quisenberry, Mrs. E. S.	17
Davis, Mrs. Leona	17	R	
Davison, Miss Lena	10	Ruyle, Asa Jr.	14, 77, 81, 95, 101
Doering, J. F.	9, 95	S	
Dufford, Mrs. Mamie	11, 76	Saupe, Mildred W.	14
Dufford, Ray	11, 86	Schuyler, Remington	14, 96, 100
E		Short, Mrs. Minnie	17
Eaton, Miss Julia	11, 74, 80, 85	Skelton, James D.	14, 94, 119, 127, 134, 135
Evrard, Mrs. I. N.	Not Pictured	Smith, Gordon	14, 145
F		Smith, G. Dewey	4, 8, 94, 95
Faurot, Jean H.	11	Spalding, James C.	14, 78, 84
Ferguson, William I.	2, 104, 126	Spindler, Charles R.	14
Fichthorn, C. L.	12	Steen, Wylie F.	15
Fisher, E. P.	12	Stellwagen, J. H.	14
G		Stewart, Bruce	15
GILLIAM, J. A.	17	Stuhr, Easton	15
H		T	
Hansen, Louis	12, 87, 89	Tabor, Mrs. Virginia	16
Harper, Alf	17	Thomas, Lawrence	15, 72, 86
Hawkins, Lynelle	16, 107	V	
Hayden, Stanley I.	9, 95	Van Natta, Mrs. Frances	15
Hayob, Raymond	16, 94	Venditti, Mrs. Norma	16
Hill, Hobart	12, 81	W	
Howery, Mrs. Kathryn	17	Wells, Rodney	15
Hughes, Mrs. Dorothy	Not Pictured	White, Dorothy	16
Huff, Bell Campbell		Z	
K		Zumbrunnen, A. C.	15
Kemp, Gratton	12, 81		
L			
Lamkin, John	12, 79, 82, 86		
Liffing, Mrs. Esther	12, 89		
Lightfoot, Robert	12		
Linnell, Robert S.	13		

Fowler, Joe	58, 112, 119, 127	Julian, Dalven	30, 79
French, Art	47, 81, 96	Jung, Lily	30, 74, 75, 83
Frohnen, Dick	81	Kaiser, Frank	48
Gann, Delmar	48, 119	Kaiser, William	59, 78, 81, 84
Garrigues, James	65	Kamm, Bill	30
Gerhard, Bill	26, 77	Kean, Bill	30, 79
Gerhardt, Doris	48, 74, 75, 88	Kelly, Dick	59, 135
Gierse, Charles	26	Kent, Frank	31, 77, 88
Giger, Francis	27, 111, 127, 129	Kenyon, Hugh	No Picture
Gilmore, Russ	66, 127	Kern, George	No Picture
Gonder, Glen	27, 74	Kersten, Jerry	No Picture
Graham, Donald	No Picture	Kerr, Lee	49
Grimes, Fred	66, 127	Killoren, George	18, 30, 79, 90
Groh, Ken	81	Kilp, Gerald	59, 86
Gunther, Willard	58	Kilp, Rosalie	49, 72, 86, 89, 140, 141, 142, 143, 144
Hains, Lamar	66	King, Bill	No Picture
Hains, Lenora	48, 89	Koeller, Gene	31, 81
Hall, Bert	27, 116	Krause, Jean	59
Hall, Dick	48, 87	Krause, John	66, 107
Hamilton, James	27, 90, 135, 145	Krueger, Earnest	49, 78
Hanna, Fred	66, 119, 127	Krumsiek, Bob	59, 113
Happy, Jim	119, 121	Lacy, Winnie	59, 83, 97, 138, 140, 143, 144
Hargrove, Lewey	No Picture	Laemmle, Carl	No Picture
Harvey, Pat	27, 73, 83, 88	Laidlaw, John	66, 87
Hayden, Calvin	66, 119	Lamar, Martha	49, 72, 83, 84, 133
Hayes, Harry	28, 125	Landis, Chuck	67, 78, 81, 119
Heddens, Kim	58, 90	Larcheid, Lyle	49, 81, 97
Hedrick, Tom	No Picture	Larson, Larry	135
Heinzler, Eugene	28	Larson, Nafe	No Picture
Hendrix, Robert	82, 105, 127, 128, 130	Lassa, Emil	No Picture
Hendrix, William	97, 119	Lauer, Bill	67, 86
Herbon, Jim	48, 79, 95, 98, 99, 145	Lauth, John	No Picture
Herndon, John	58, 85, 131	Lay, Barbara	60, 98
Hickman, Jeanette	55, 58, 89, 141	Lee, Howard	131, 133
Hisle, Bob	58	Leslie, Dean	31
Hitt, Bob	66	Lewis, John	49, 79, 81, 87
Hodits, Stephen	No Picture	Liggett, Frank	49, 81
Hoffman, Henry	28, 44, 72, 76, 89	Lingenfelder, Bill	31, 82, 114, 115, 119, 120, 121, 122, 125
Hoffman, William	28, 44, 72, 86, 89	Lile, Mary	60, 73, 105
Holtgrewe, Harry	81, 96	Linn, Louis	49, 81
Holtgrewe, Marian	No Picture	Linzer, Rosalyn	60, 85, 140, 143
Holwell, Joseph	28, 82, 119, 120, 124	Llewellyn, William	32, 77, 89
Hope, Erskine	29	Lockridge, Chris	49, 72, 83
Horman, Irma	59	Lodewyks, Martin	31
Hough, Lois	18, 48, 72, 73, 88, 95, 97, 98, 138, 145	Long, Russell	32
Houston, Pat	66, 75, 138, 141	Lovercamp, Fred	60, 81
Howell, Ralph	66	Lucas, Betty	73
Huber, Charles	No Picture	Luebbert, Dick	32
Huff, Charles	48, 81, 90	Luehrman, Pete	18, 32, 78, 84, 89
Hunker, June	48	Luethge, George	49
Hunker, Rube	29	Luschen, Bob	88, 119
Hunt, John	29, 82, 119, 120, 122, 125	Maguire, Bob	89
Huskey, Elvin	59	Mallory, Bill	119
Iles, Herb	59	Maloney, John	No Picture
Ingalls, John	59	Markland, James	67, 98, 119, 127
Izard, Les	48, 77	Martin, Hilery	No Picture
Jensen, Barbara	59, 73, 107, 138, 141	Martin, Marjorie	89, 96
Jensen, Bob	66	Masters, John	33
Jet, Ralph	118, 119	Matheny, Ruth	67, 87, 89, 138, 141
Johanboeke, Gary	No Picture	Matthes, Betty	67, 75, 99, 101
Johnson, Art	No Picture	Mayer, Albert	No Picture
Johnson, Bruce	No Picture	McAuley, Ed	79, 97, 99
Johnson, Warren	66	McAuley, Phil	32, 79, 88, 108
Johnson, Leroy	29, 81	McEuen, Dick	60, 78, 84
Johnson, Pat	66, 73, 87	McDade, Leo	115
Jones, Claire	89	McDougal, Jean	87
Jones, Dick	107	McFadden, Harold	33
Jones, Tom	29	McGrath, Sam	79, 108

McGuire, Bob	50, 77, 87
McKearnan, Neil	50, 81, 90
McKenzie, Bruce	18, 33, 79, 82, 105, 119, 120, 122, 123, 124, 145
McKinney, Herb	67, 87, 89
McQuiddy, Bob	67
Mellis, Bill	33
Mendenhall, Paul	No Picture
Meyniel, Andrae	34
Miller, Carl	No Picture
Miller, Charles	34, 72, 79, 82, 127, 128, 129, 130
Mitchell, Leroy	34, 72, 84, 138
Montag, Betty Jo	No Picture
Moore, Bob	50, 119
Moore, John	67, 131
Moore, Ward	67, 87, 138
Morgan, Fern	82, 119, 121
Morrison, Gene	60, 73, 83, 138, 140, 141, 143
Muehlenbrock, Carol	34
Murray, Jim	34, 77, 80, 85
Meyers, Ken	No Picture
Napton, Bill	50, 119, 120, 121, 126, 131, 132, 133
Nelson, Homer	60, 82, 96, 119, 127, 135
Nelson, Dean	35, 86, 101, 113
Newton, Marvin	60
Nichols, Dean	35, 87
Nichols, Robert	No Picture
Nolte, John	82, 96
Norman, Milton	60, 77, 80, 85
O'Dell, Farris	144
Odom, Bruce	No Picture
Ogdon, Al	35, 76, 89
Olinger, Charlotte	81, 96, 100, 102
Oliver, Ken	35, 119, 120, 124
Olmon, Parks	No Picture
Orscheln, Jerry	119
Page, George	50, 81, 134
Payton, Charles	36, 75
Pearson, Charles	67
Peden, Mary	60
Perry, Louis	67, 101
Perryman, Leonard	119
Peterson, Norma	63, 67, 73, 87, 102, 138
Pezzano, Frank	50
Phillips, Jeannie	50, 119
Phillips, Homer	No Picture
Phillips, Verlin	105
Pitou, John	67
Prescott, Don	36, 110, 119, 120, 122, 124
Plessinger, Cecil	50, 105
Preston, Roy	68, 108
Pronger, Earle	No Picture
Prskalo, John	No Picture
Pugh, Jack	No Picture
Purpus, Mike	50
Rasmussen, Jim	No Picture
Rassier, Ted	36, 76, 88
Reep, Bob	60, 112
Reid, Barbara	36, 112
Reid, Bill	36, 97, 100
Reynolds, June	No Picture
Rhoades, Roland	77
Rigdon, Harold	No Picture
Riker, Dick	81
Rila, James	68, 89
Rissler, Bob	61, 73, 100
Ritterbusch, Fern	No Picture
Roberts, Bill	No Picture
Robertson, Lucille	No Picture

Robbins, Chuck	37, 72, 82, 88, 95, 119, 124
Robbins, True	No Picture
Rockhold, Shirley	50, 75
Rogers, Fred	82, 127, 128, 129
Roscher, Dortha	51, 87
Roscher, Franklin	61, 144
Rose, Oliver	68, 81, 131
Rose, William	57, 81
Rubino, Joe	No Picture
Runyan, Omer	68
Saathoff, Dick	68, 87
Sanneman, Bob	61, 78, 84
Sargent, Ken	37
Saunders, Dick	No Picture
Saupe, Joe	37, 82, 127, 129, 134
Scavuzzo, Luke	51, 80, 85, 115
Scheib, Vic	No Picture
Schmid, Anita	61, 98
Schmidt, Bob	No Picture
Scholle, Louis	No Picture
Schuette, Don	No Picture
Schupp, Fritz	61, 86
Schuster, Morris	No Picture
Schweigerdt, Fred	61, 98, 119
Selfridge, John	No Picture
Semar, Jay	37, 97, 105, 119
Serkowski, Martha	38, 72, 75
Sharp, Dick	No Picture
Shaw, Earl	38, 89
Shaw, Mike	81
Shaw, John	81
Shields, Bob	51, 77
Shumate, Mary	68, 75, 96, 138
Sider, Barbara	68, 101, 105
Siegel, Joel	68, 127
Sigman, Van	97, 131, 132
Signore, Joseph	68, 77, 107, 119, 132
Simmons, Clyde	38
Simmons, John	68, 119, 131
Simms, Bob	38, 79
Simpson, Dickie	68, 73
Skaggs, Carol	38, 119, 127, 129
Skelton, Dale	121, 122, 124
Skinner, Fred	18, 39, 72, 79, 82, 119, 120
Slaughter, Dick	51, 79
Sleeper, Frank	39, 77, 88, 107
Smith, Almeda	No Picture
Smith, Alex	39
Smith, Bill	77, 86
Smith, Leland	69, 81, 87
Smith, Lynnne	69, 81, 87
Smith, Norma	51, 87
Smith, Ray	61
Smith, Dick	69
Smith, William F.	79, 81
Smith, William J.	No picture
Soxman, Kenny	51, 82, 119, 134
Spaulding, Earnest	39, 77
Speise, Bill	39, 72, 79, 119, 124
Sprigg, Marvin	51, 119
Stade, Charles	51, 81, 97, 144
Stanley, Carl	52, 79
Stanley, William	69, 79
Stauch, Albert	40
Steele, Bob	61, 119
Steers, Barbara	No picture
Stew-rt, John	40, 99, 119, 120, 121, 125

Stoner, Jim	40
Stone David	69, 81, 85
Straile, Bill	81
Stroud, Sally	84, 89, 138, 141
Stuver, Marilyn	No picture
Summers, Beverly	69, 87, 138, 141
Sutton, Margaret	69
Swegles, Jean	69, 75, 85
Swisher, Charles	40, 89
Tabor, Bert	52, 81, 90
Taral, Nick	40, 81, 87, 89
Teegarden, Cliff	52, 81, 116
Thayer, Harold	41, 72, 77
Thomas, Don	41, 80, 85, 115
Thomas, James E.	41
Thomas, James R.	41, 72, 86, 87
Thompson, Lyle	100, 107
Thompson, Owen	18, 52, 88, 99, 105, 113
Thompson, Thomas	79
Thornton, Pat	69, 73, 141
Tipton, Frank	61, 98
Tuers, Earl	41, 81
Turner, Jerry	81
Vanselow, Dick	No picture
Vaughn, Catherine	52
Vers, Helen	61, 75, 87, 89, 142
Viera, Gene	69, 119
Voellner, Harry	No picture
Vogel, Catherine	69
Waddell, Ken	69, 86
Wall, Roger	69, 81, 87, 105
Ward, Bill	42, 79
Weaver, Barbara	70, 75, 85
Webb, Bruce	119
Welch, Dick	62
Wensel, Milton	119
Westbrook, William	81

Wheeler, Arnold	62, 77, 81, 89, 101
Wheeler, Shirley	52, 75
White, Fred	42, 81, 105
Whitlock, Dick	No picture
Whittaker, Pat	52
Whyte, John	52, 81
Wienke, Ralph	42, 77, 81
Wiley, Hewitt	62, 81
Wilhelm, Baker	70, 131
Wilhite, Alan	44, 52, 89
Wilhite, Lee	44, 53, 81, 89
Williams, Chester	70, 108
Williams, Dan	70
Williams, Geraldine	75, 85, 89
Wilson, Jack	62
Windmeier, Wendell	53
Windsor, Eddie	79
Wishard, Rollie	70
Wockenfuss, Bill	42, 74, 87
Woodsmall, James	No picture
Worton, James	114
Wright, Tim	62, 98, 119, 120, 121, 122, 126, 133
Wyckoff, Elmer	53, 114
Wyrick, Norva	70, 96, 138, 141
Yancey, Wallis	62
Yates, Carl	No picture
Yeater, H. G.	42
Young, Alfred	119
Young, Betty	62, 89
Young, Gwen	53, 141, 142
Young, Lum	42, 72, 77, 88
Young, William	No picture
Younger, Perry	53, 81
Zahn, Bob	42
Zavrel, Mildred	45, 53, 83, 98, 141
Zumwalt, Bill	No picture

